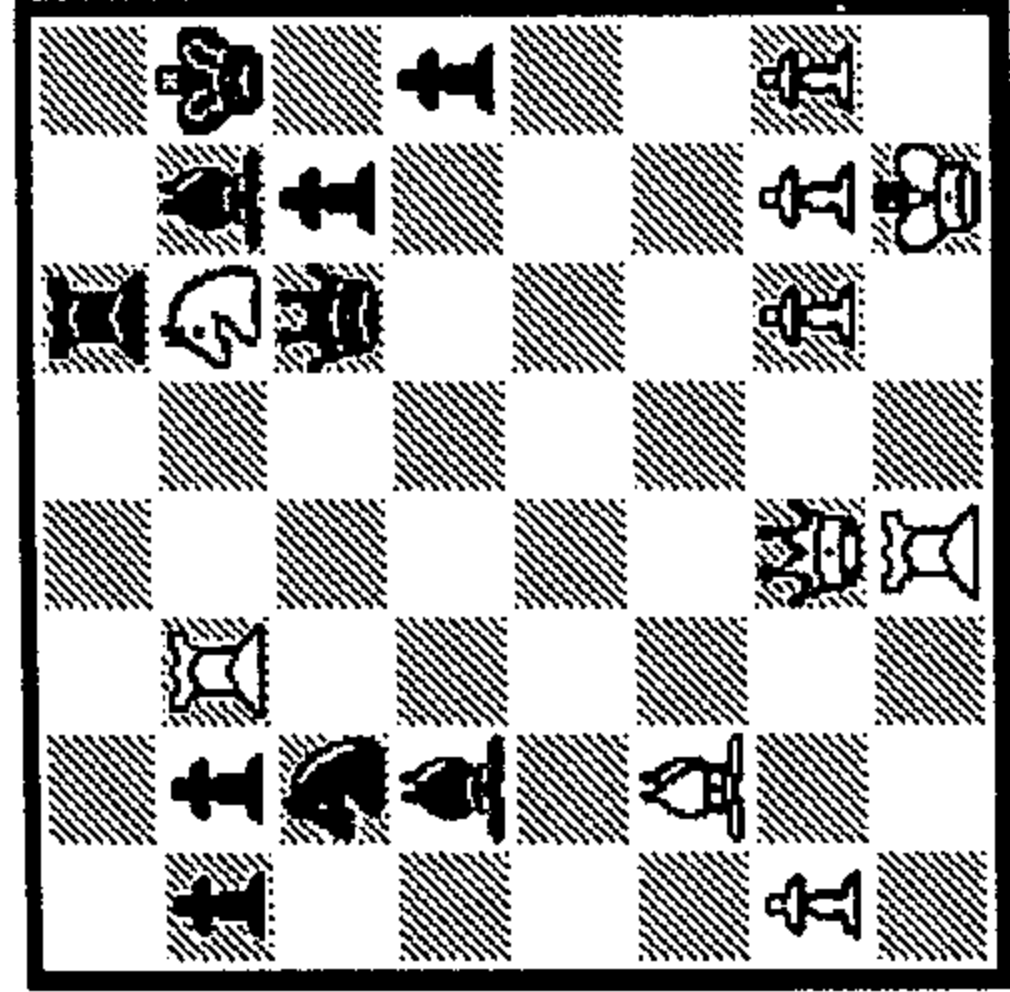


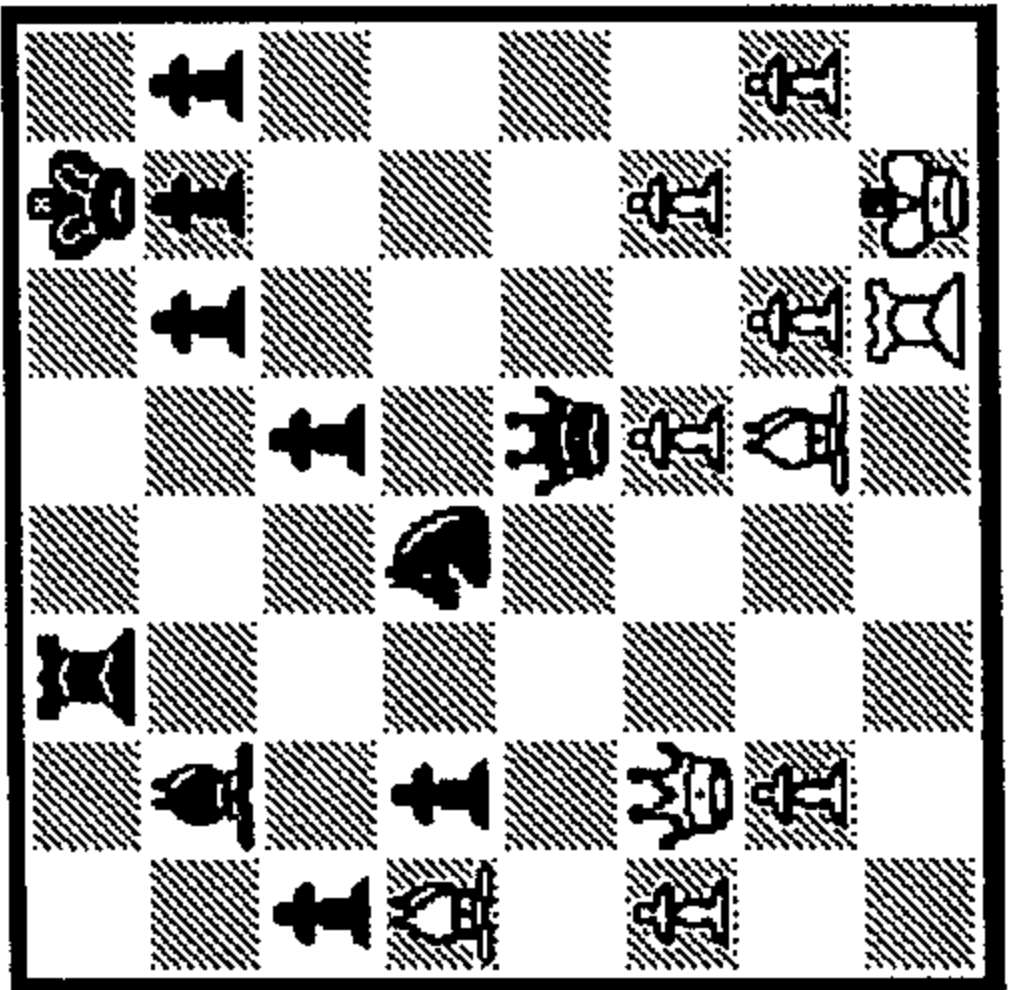
DISCOVERY

The discovery is one of the most powerful types of move possible in a game of chess. The term "discovery" simply means that a piece is moved from a rank, file, or diagonal while uncovering an attack by friendly forces behind it on the line, thereby giving both pieces a chance to simultaneously threaten the opponent. Discoveries come in three varieties. The most powerful is the **DOUBLE CHECK**, in which the moving piece gives check and uncovers a check on the enemy King by another piece. It is easy to analyze the response to double check: The attacked King must move. Interposition or capture of a checking piece are not possible. **DISCOVERED CHECK** means that the enemy King is attacked only by the piece unleashed along the line (file, rank, or diagonal), while the moving or discovering piece is free to make threats of its own. **DISCOVERED ATTACK** occurs in the same manner as the others, except that the enemy King is not directly involved. Discovered attacks of any kind are extremely dangerous and even the threat of a discovered check or double check often brings a chess game to a sudden end. Watch for all three types of discovery in this chapter.



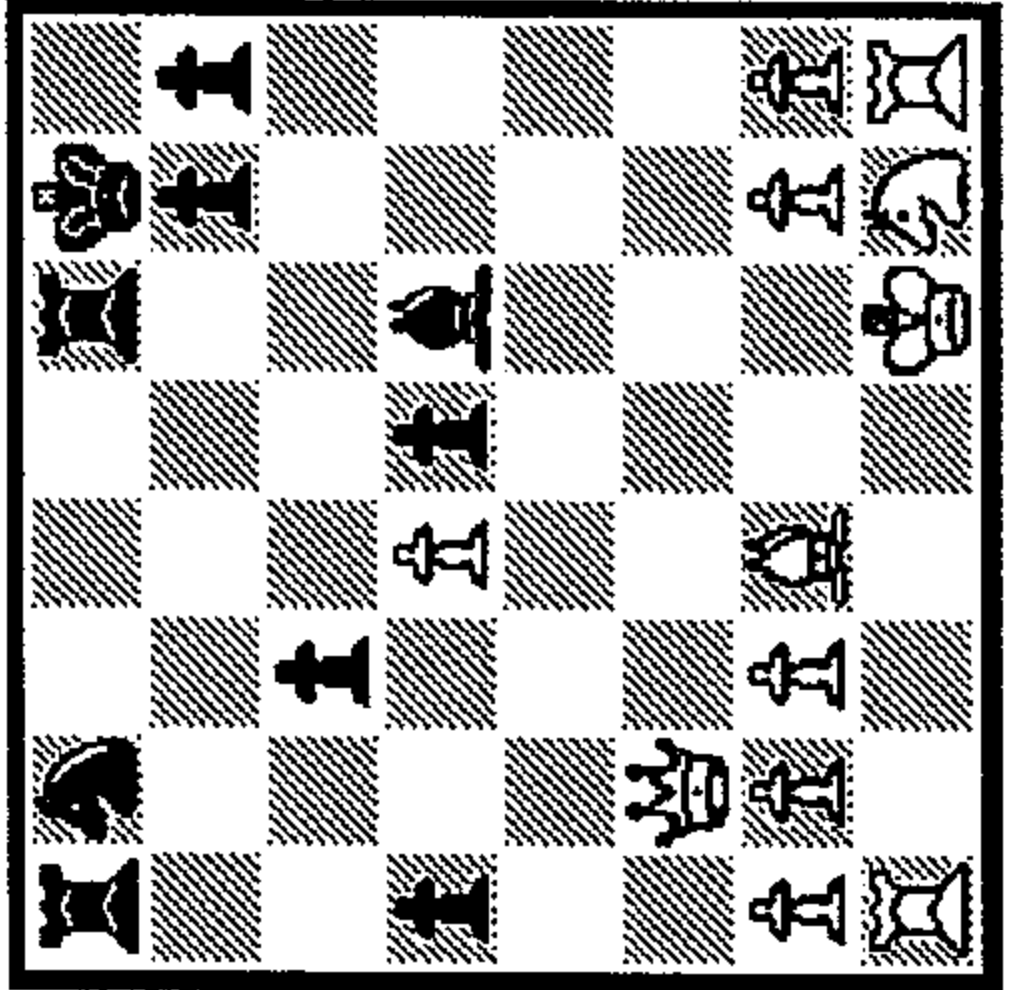
01 1...?

1_
 2_
 3_



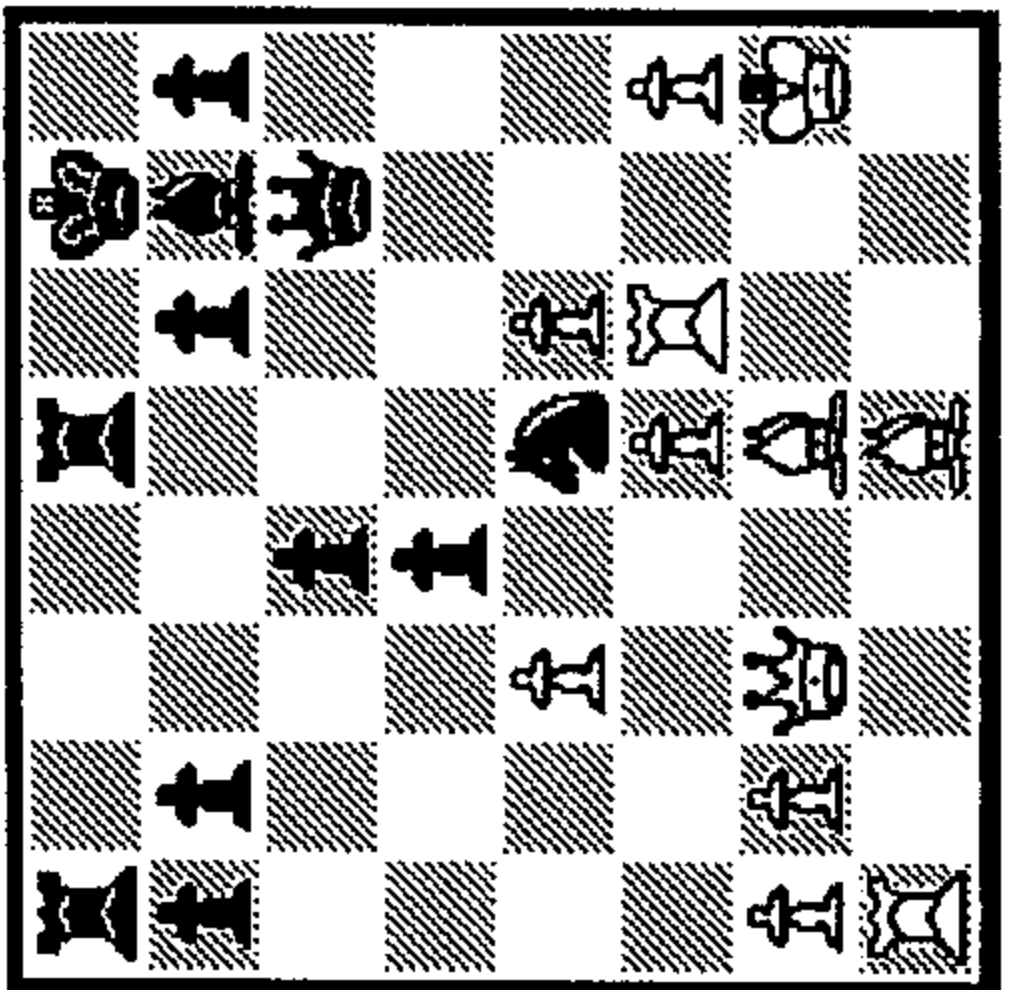
02 1...?

1_
 2_
 3_



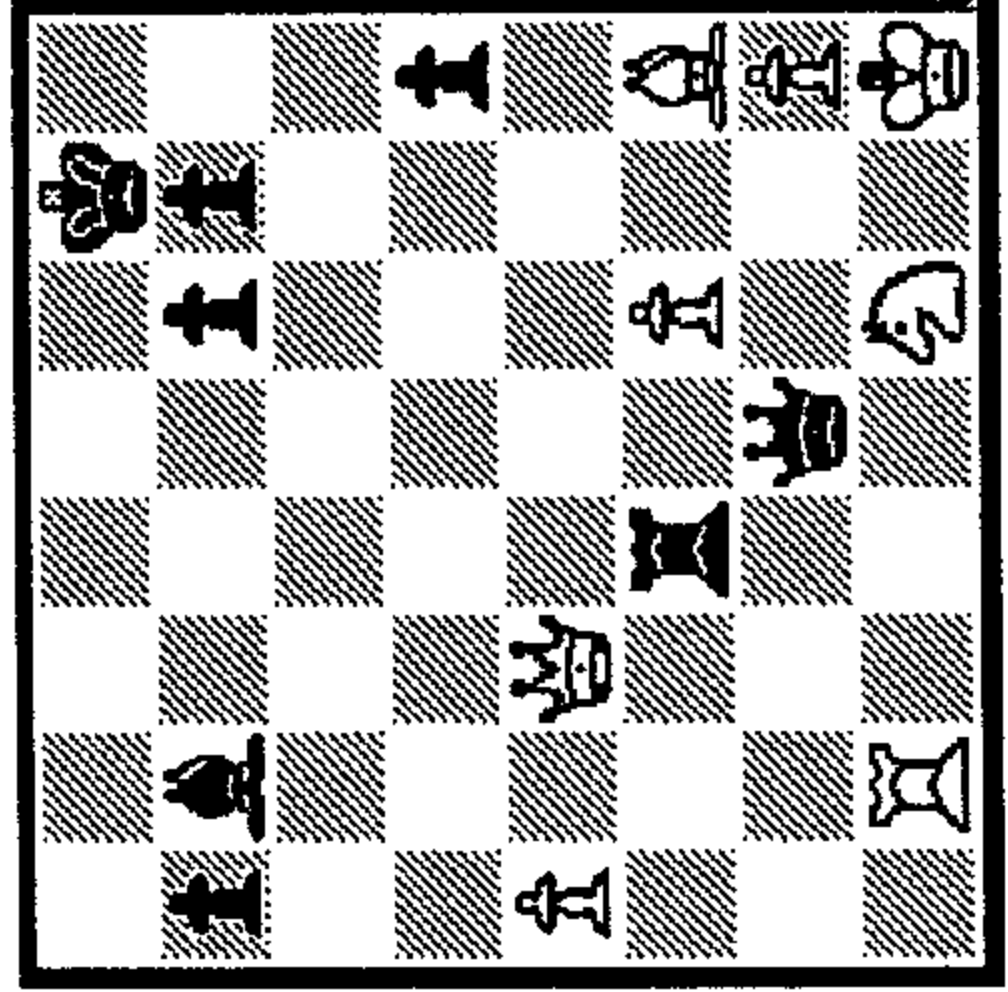
07 1...?

1_
 2_
 3_



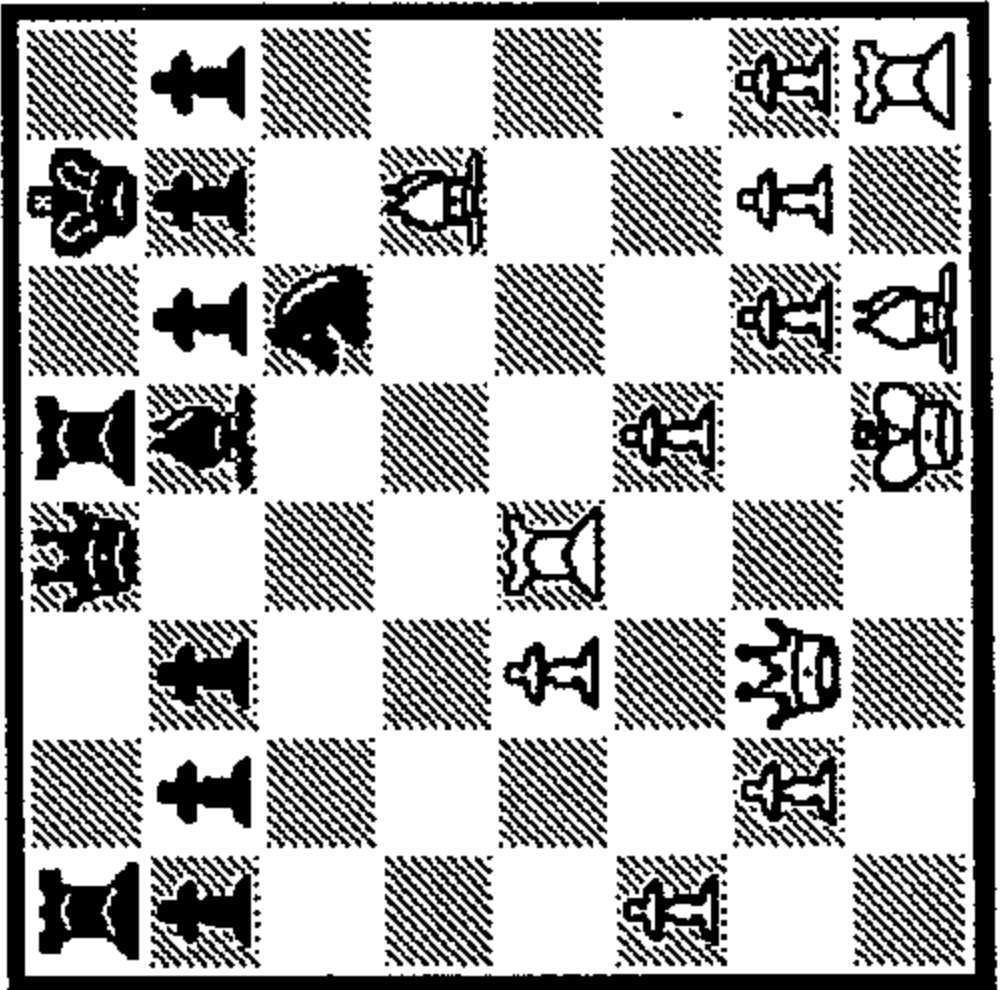
08 1...?

1_
 2_
 3_



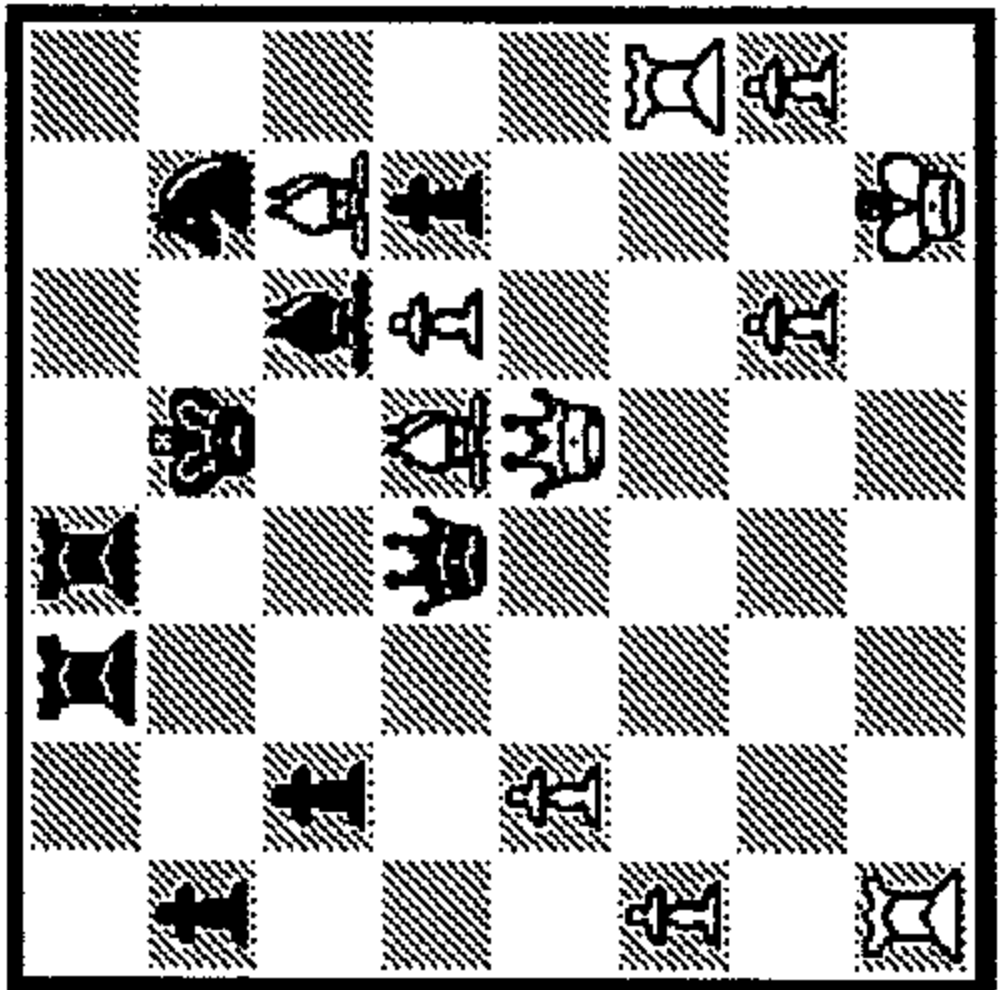
03 1...?

1_
 2_
 3_



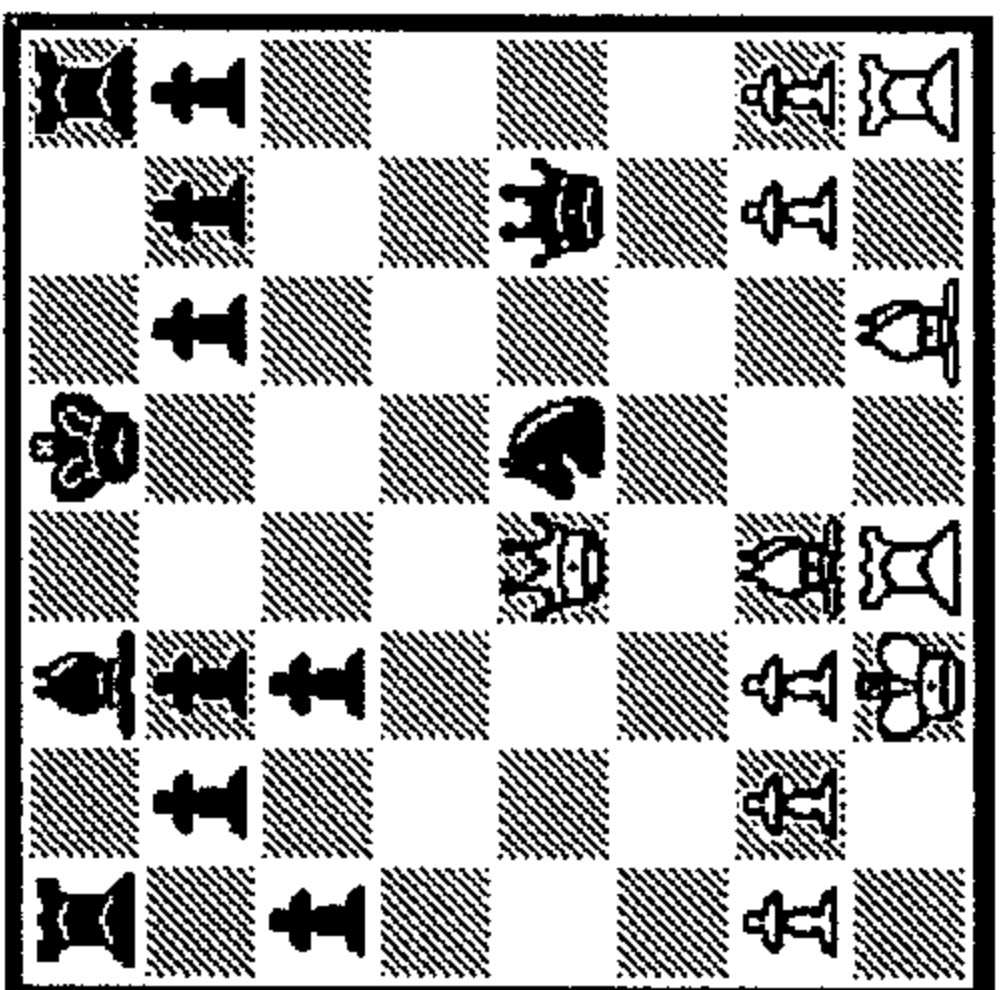
04 1...?

1_
 2_
 3_



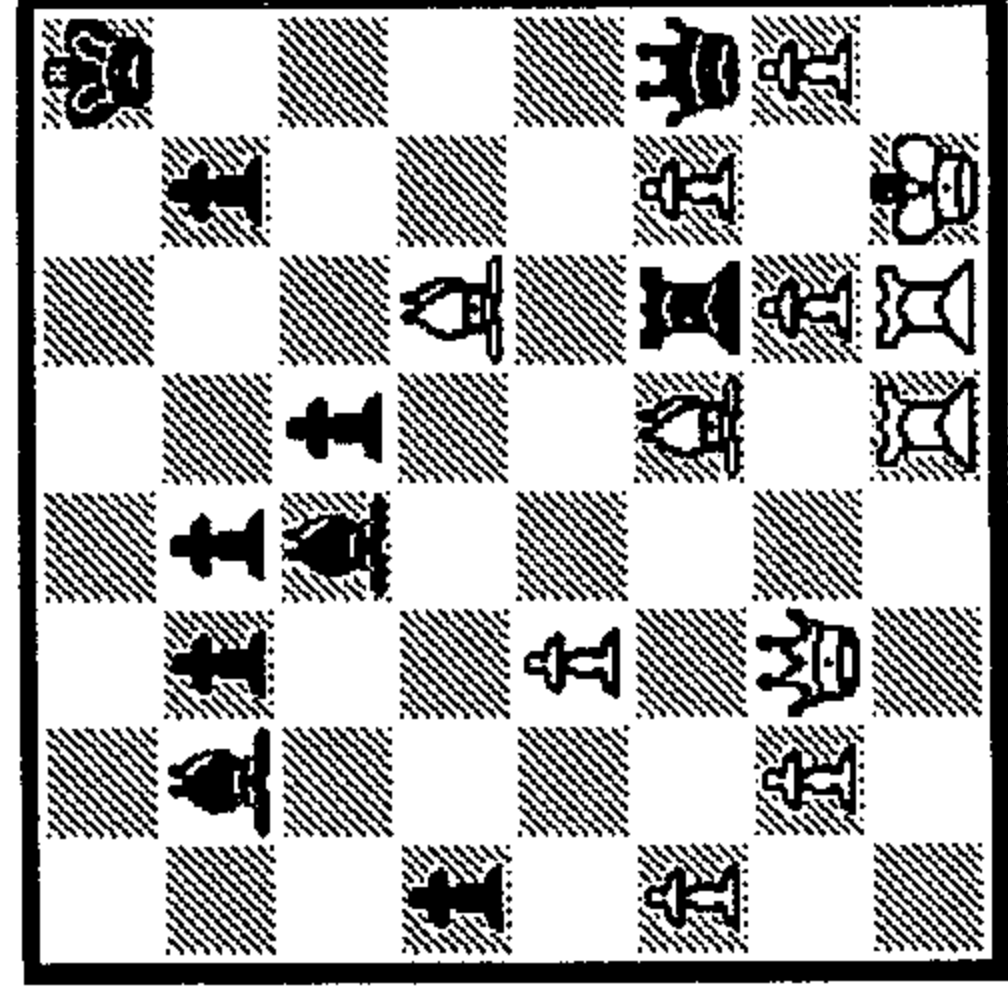
09 1...?

1_
 2_
 3_



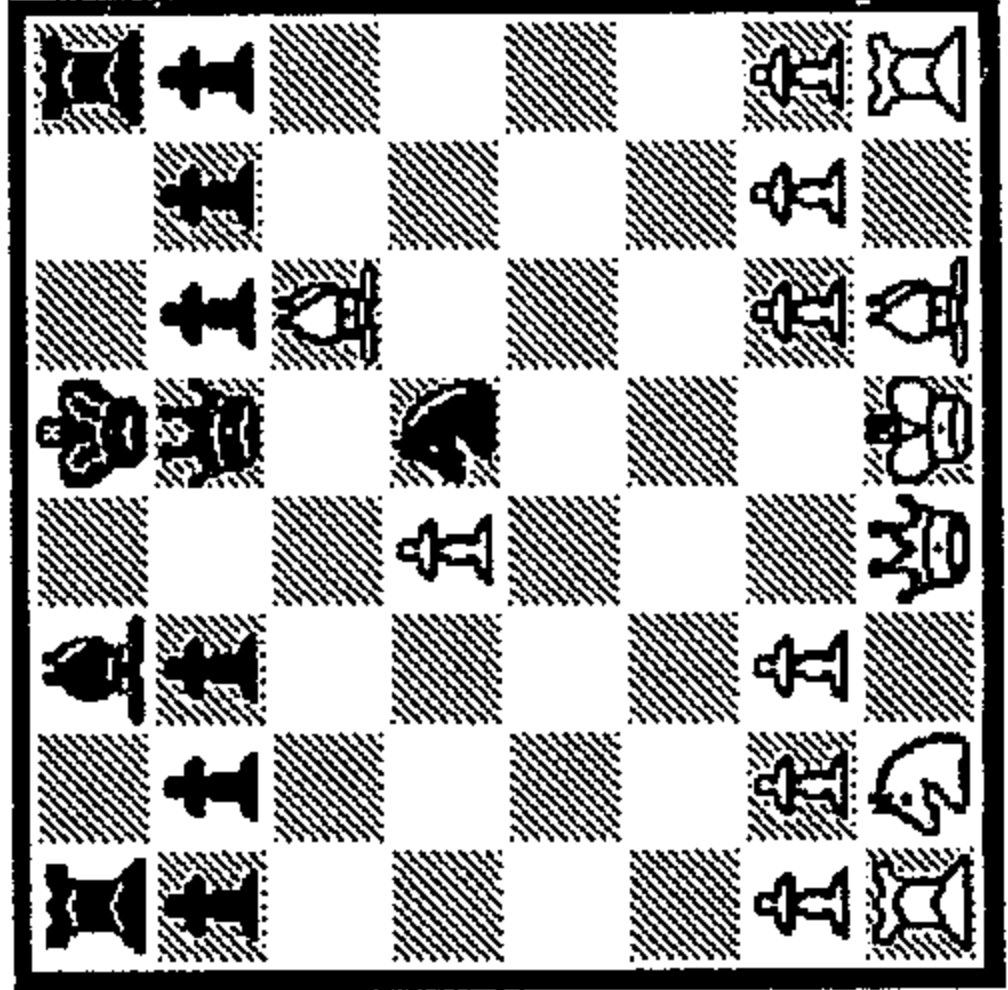
10 1...?

1_
 2_
 3_



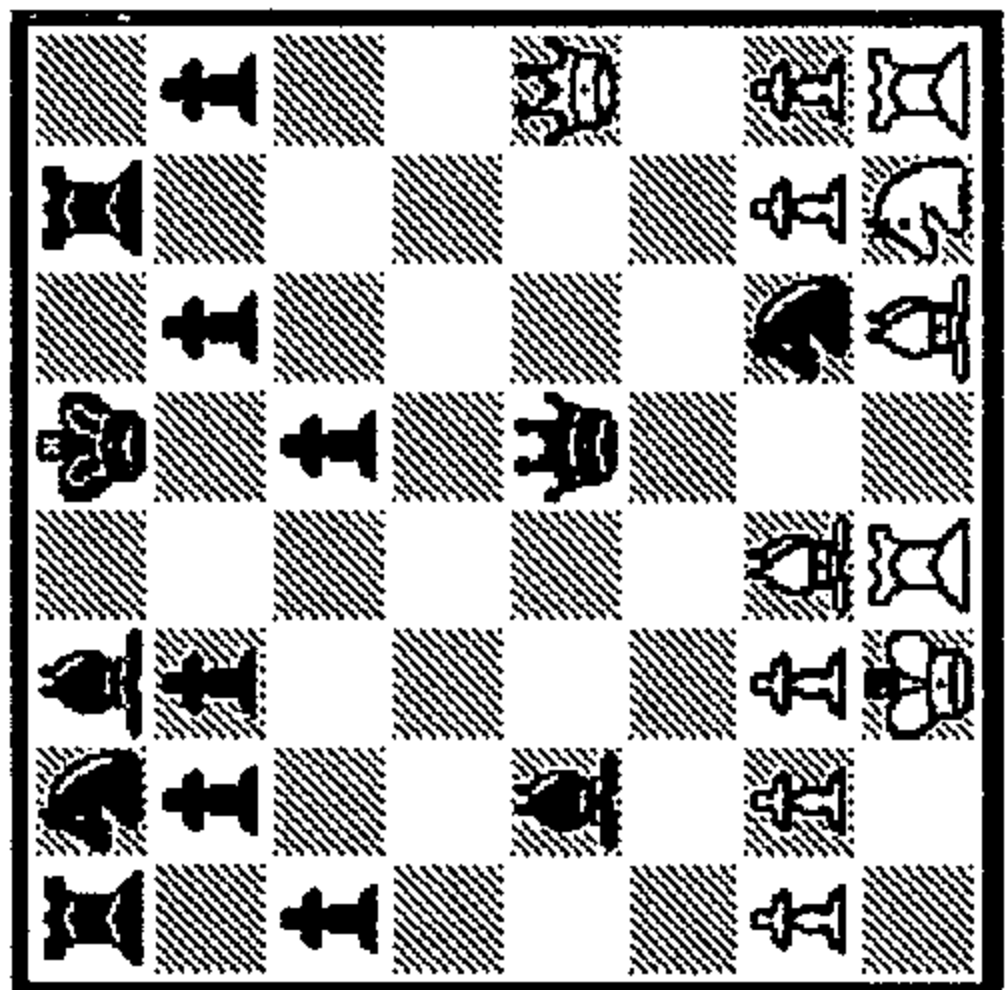
05 1...?

1_
 2_
 3_



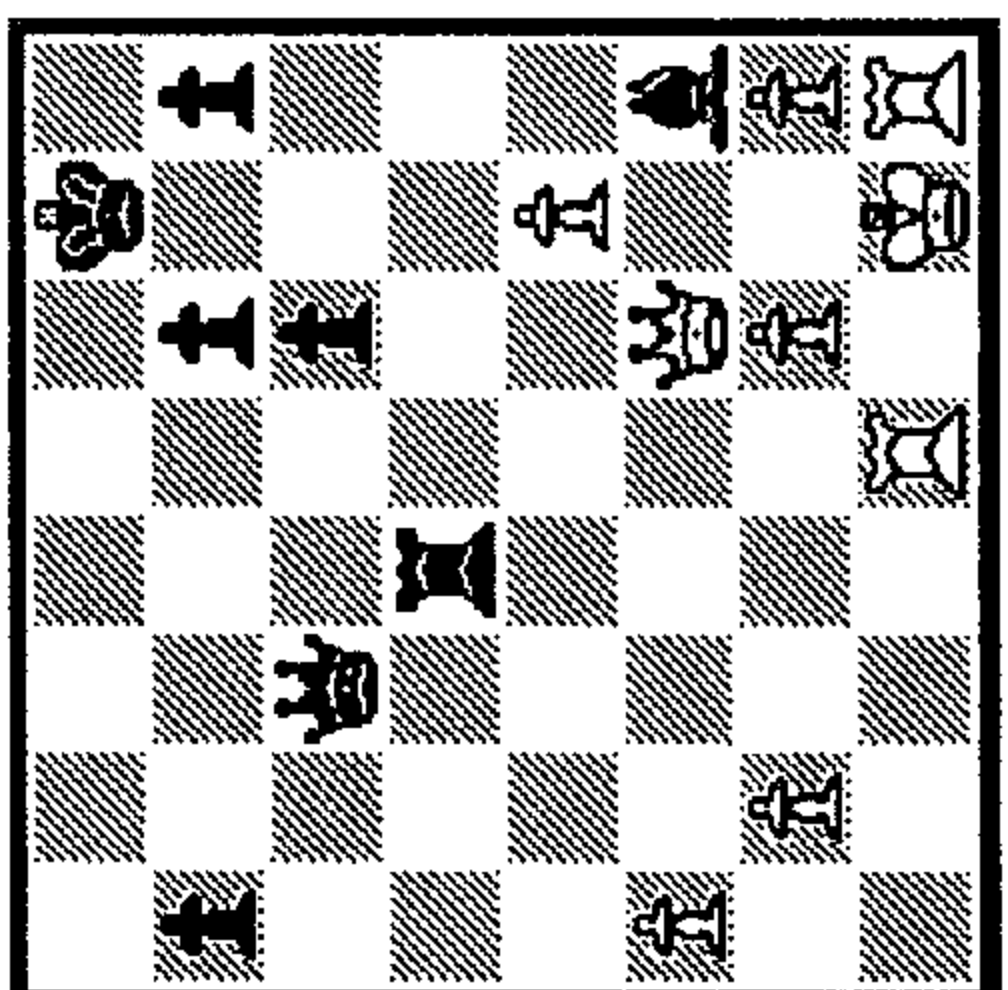
06 1...?

1_
 2_
 3_



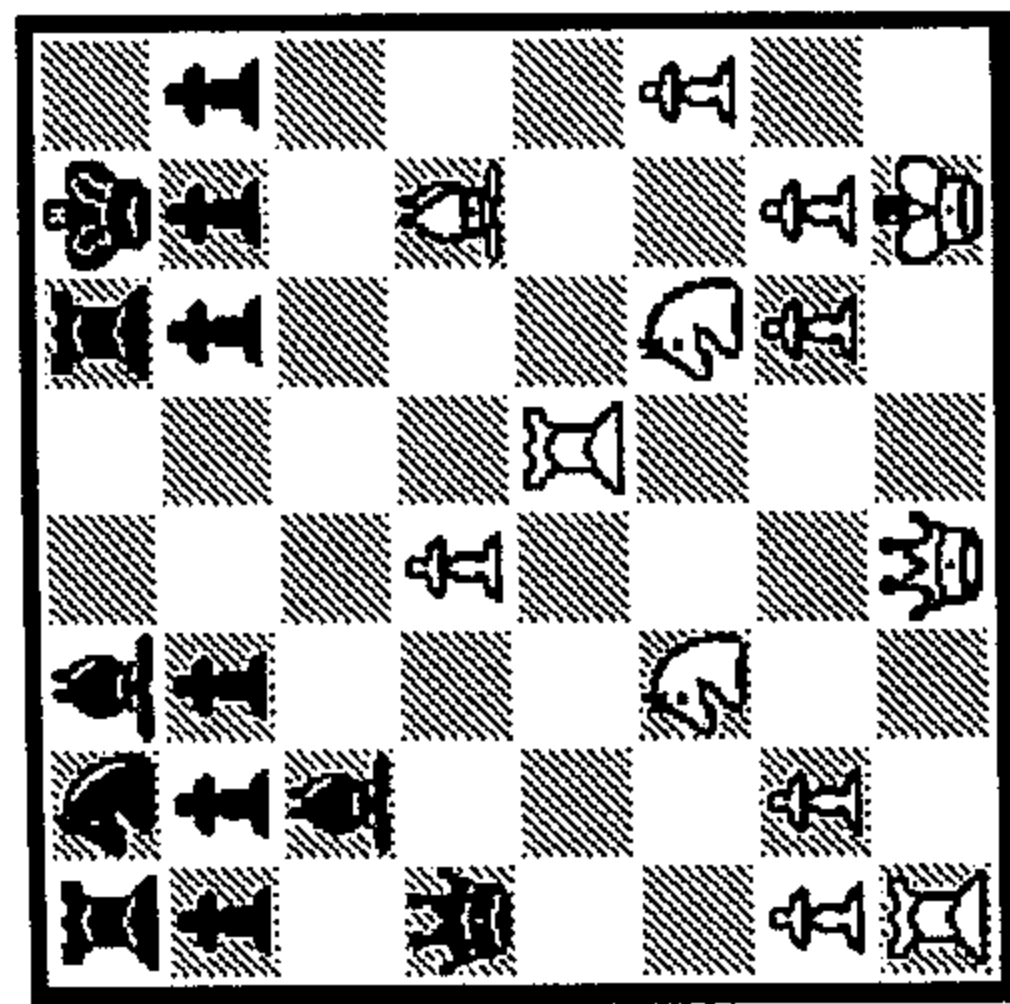
11 1...?

1_
 2_
 3_



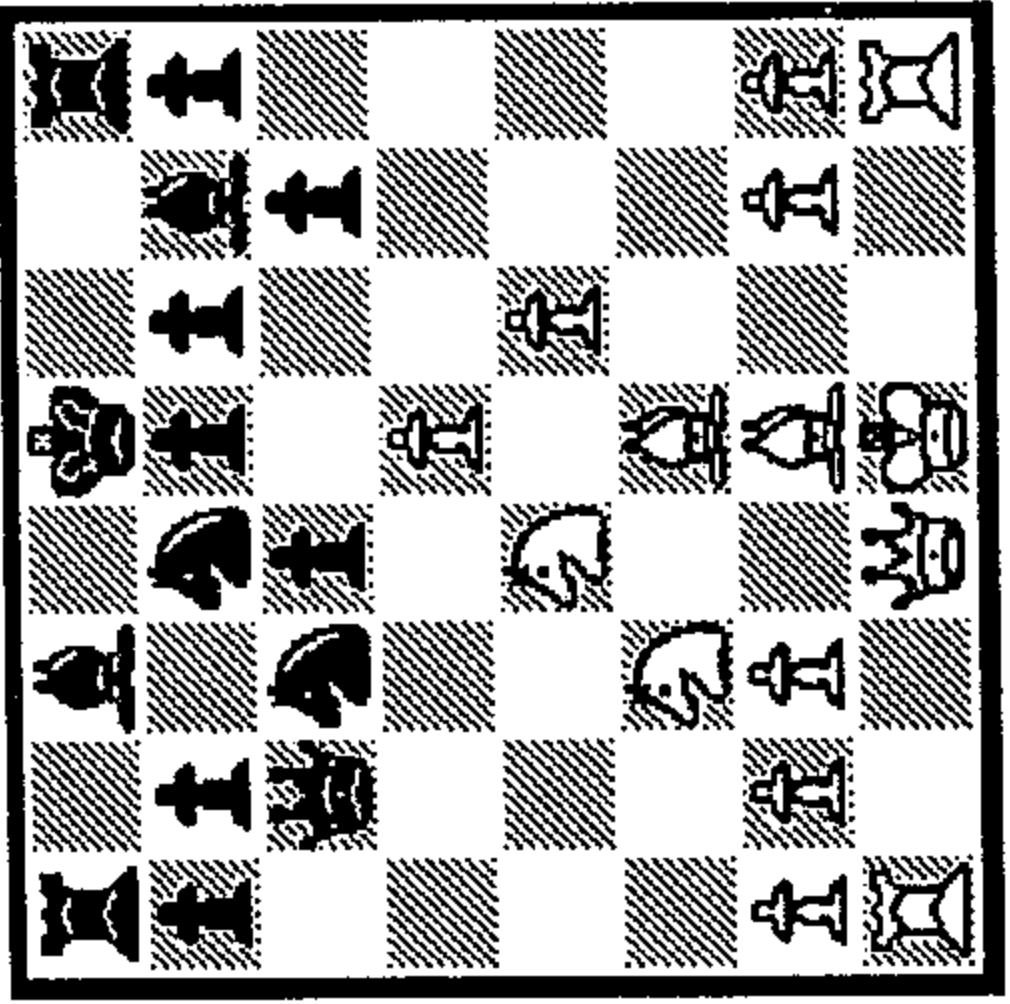
12 1...?

1_
 2_
 3_



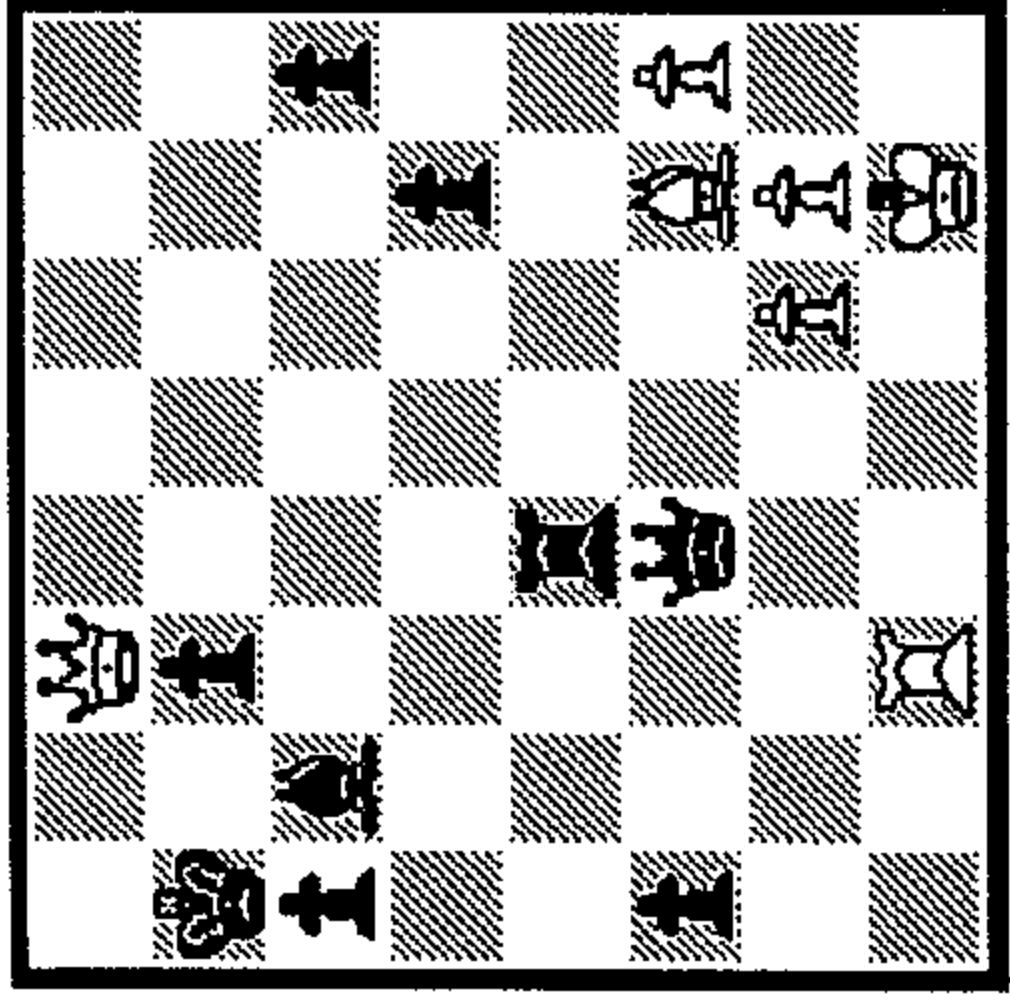
25 1..?

1-
2-
3-



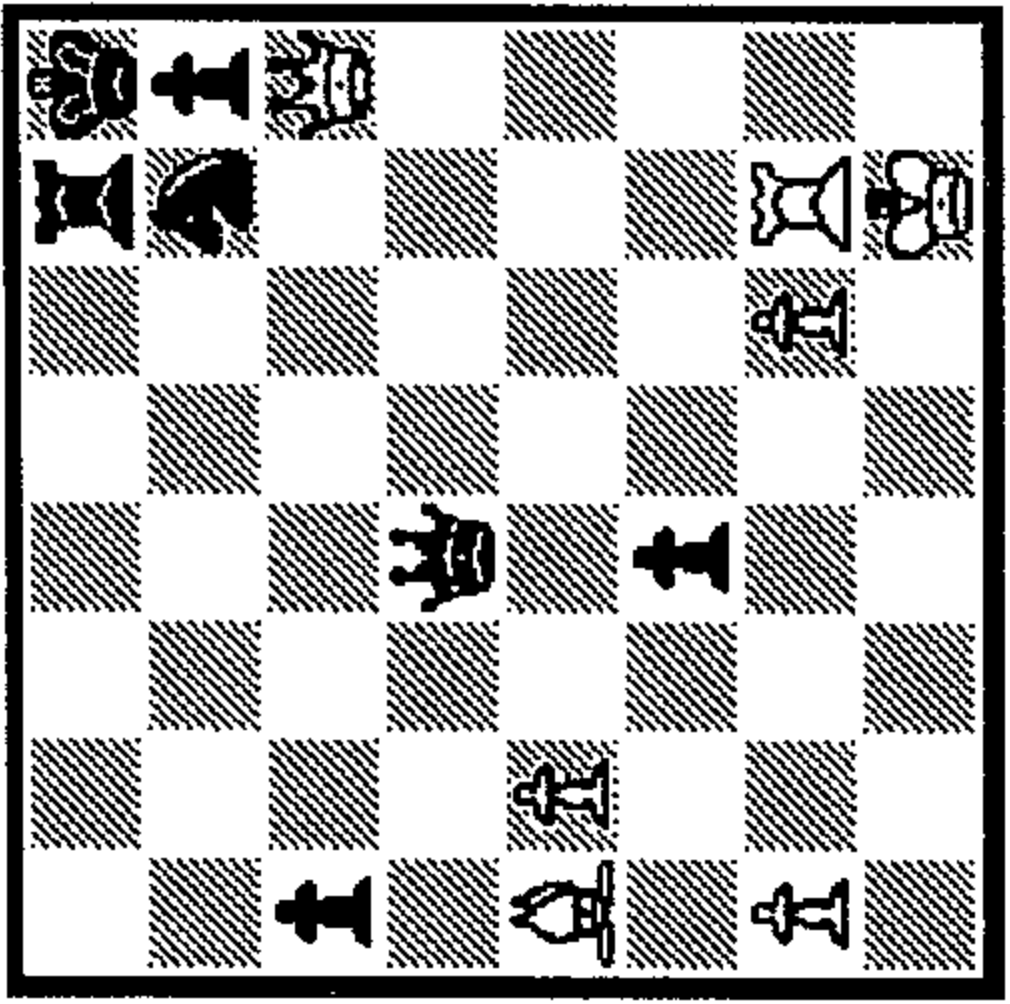
26 1..?

1-
2-
3-



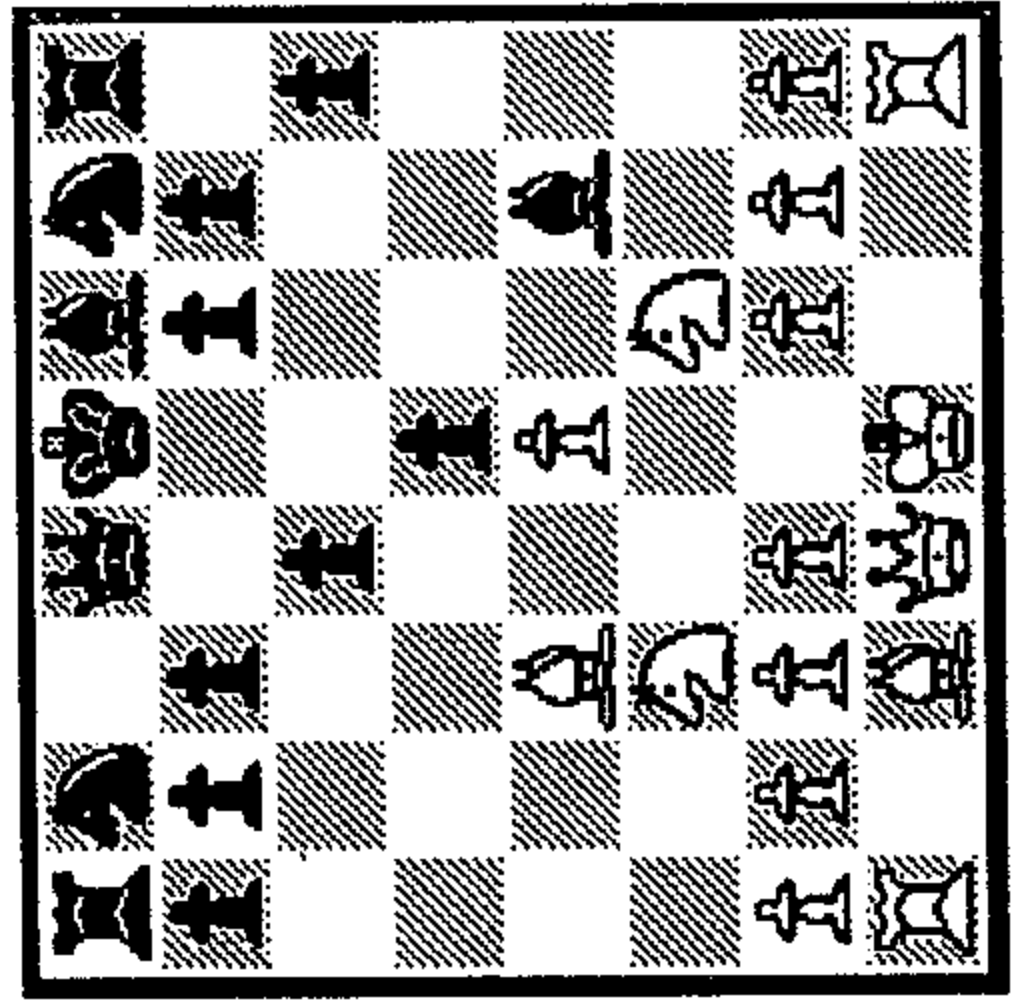
31 1..?

1-
2-
3-



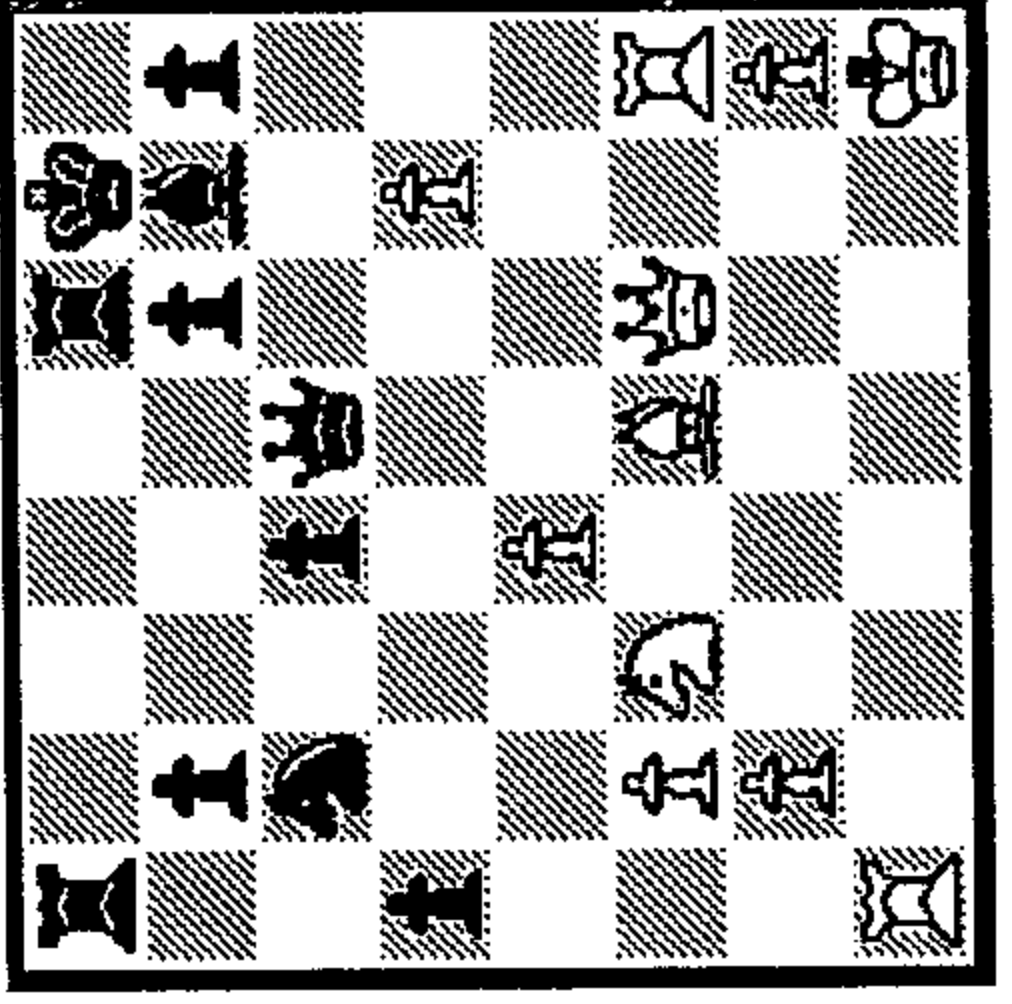
32 1..?

1-
2-
3-



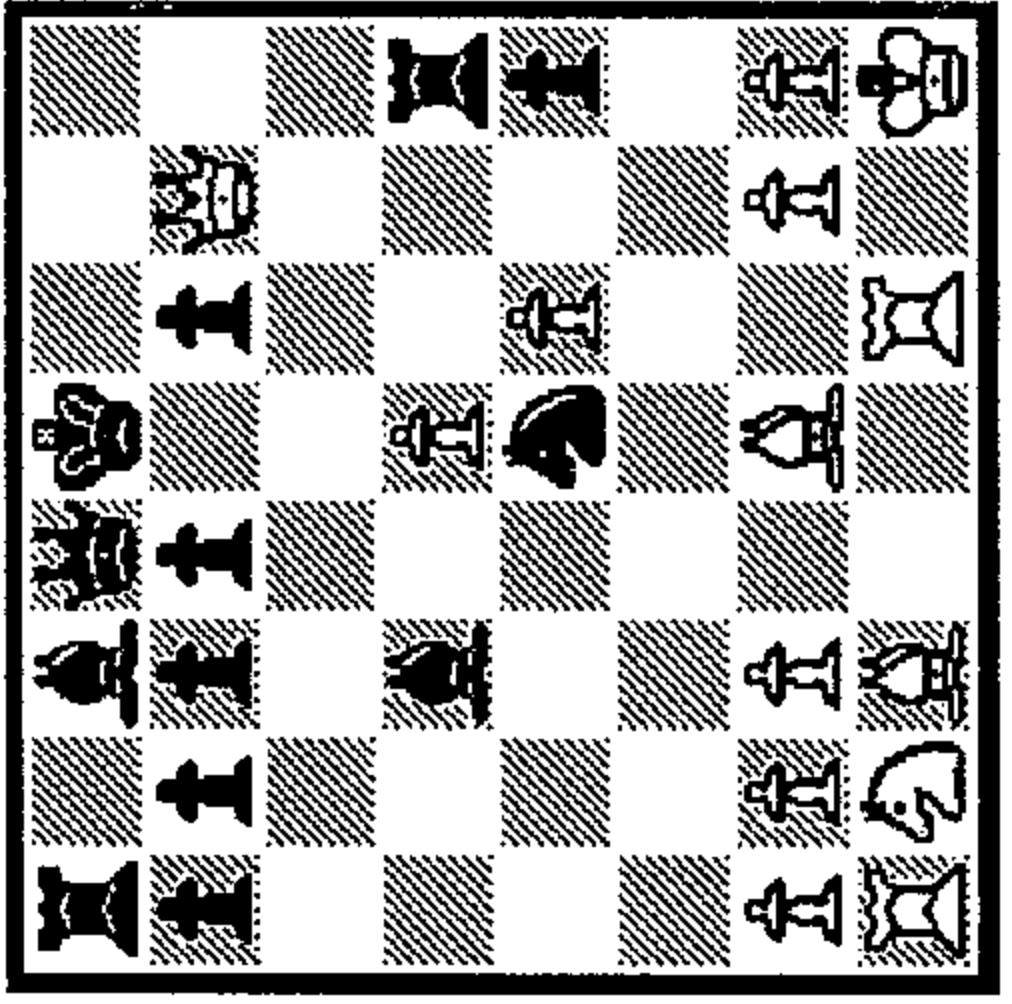
27 1..?

1-
2-
3-



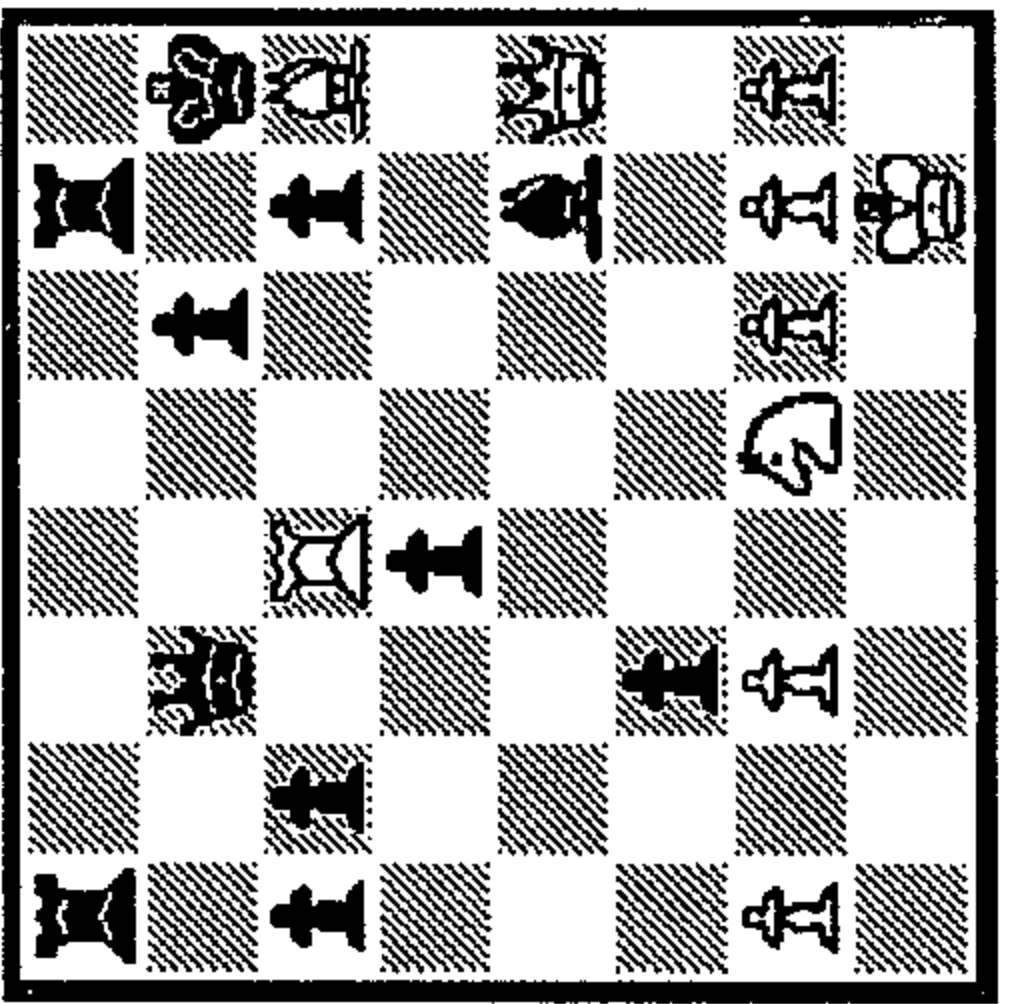
28 1..?

1-
2-
3-



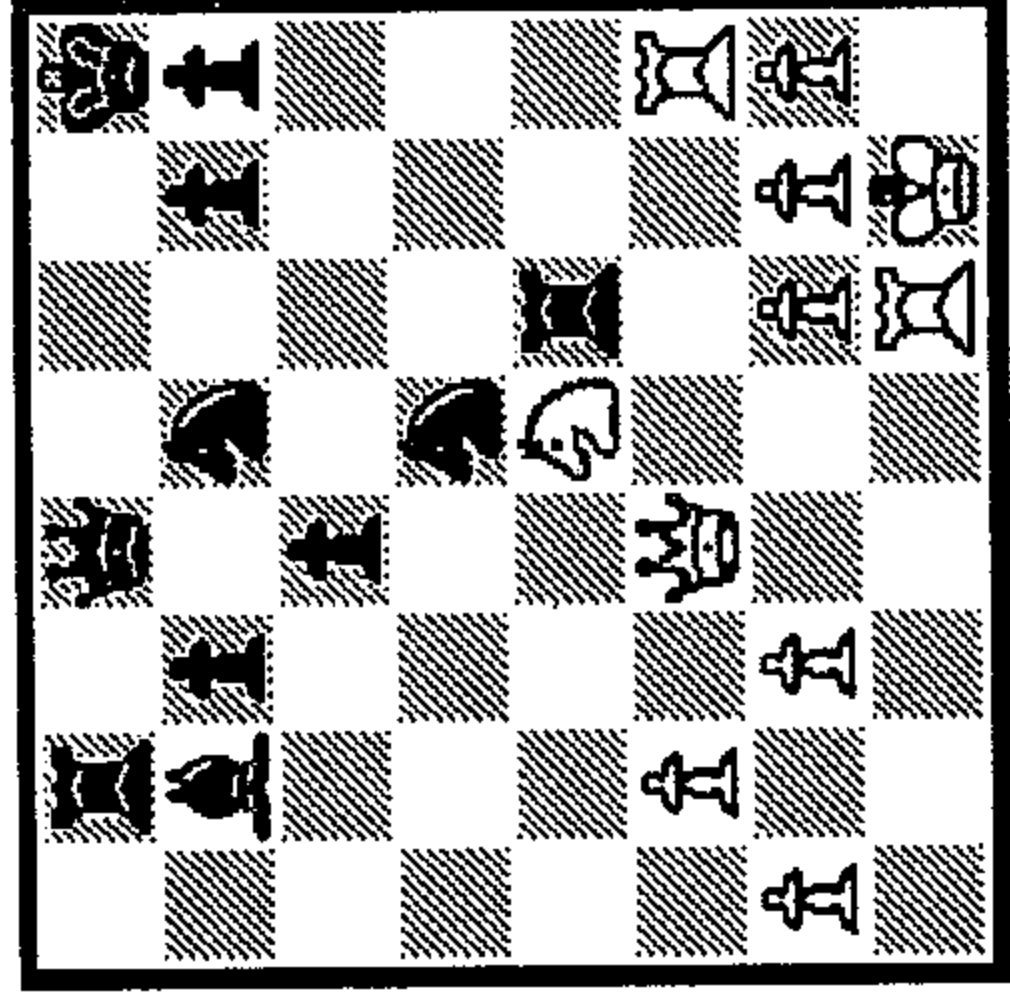
33 1..?

1-
2-
3-



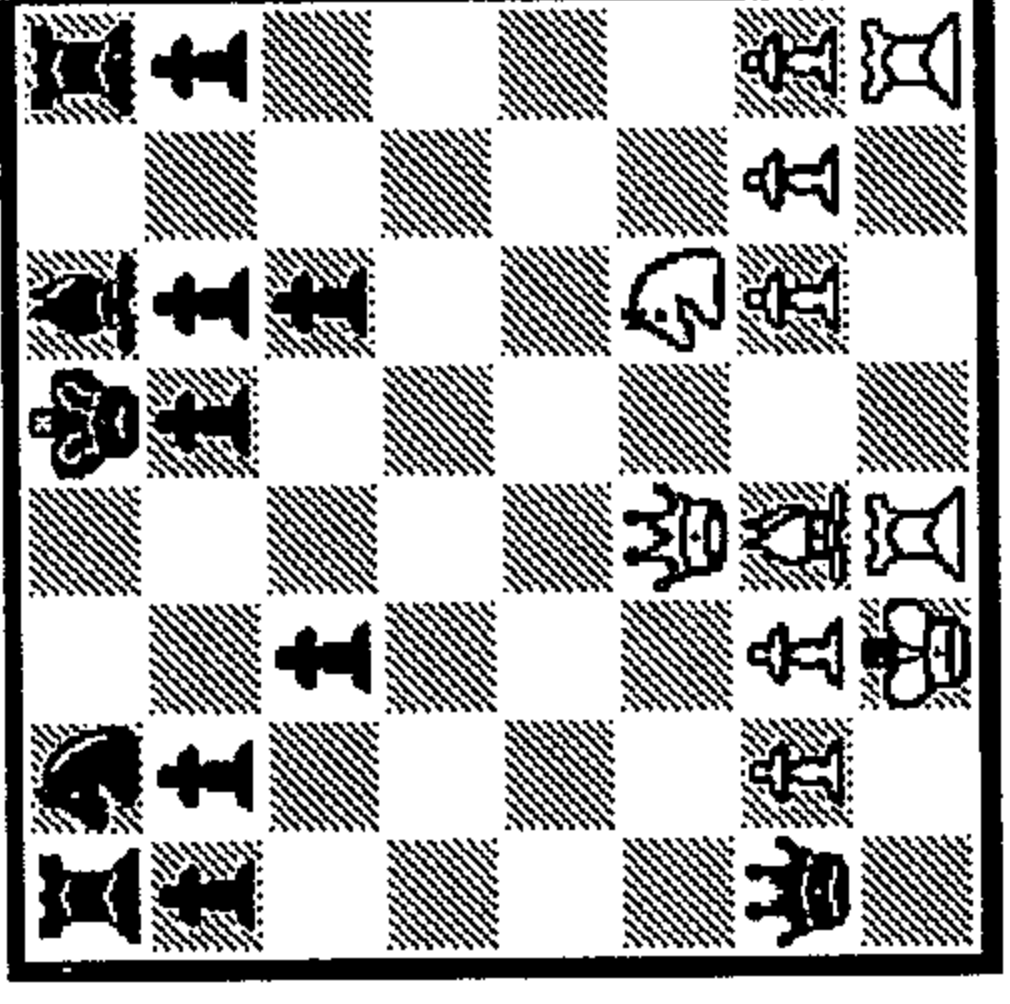
34 1..?

1-
2-
3-



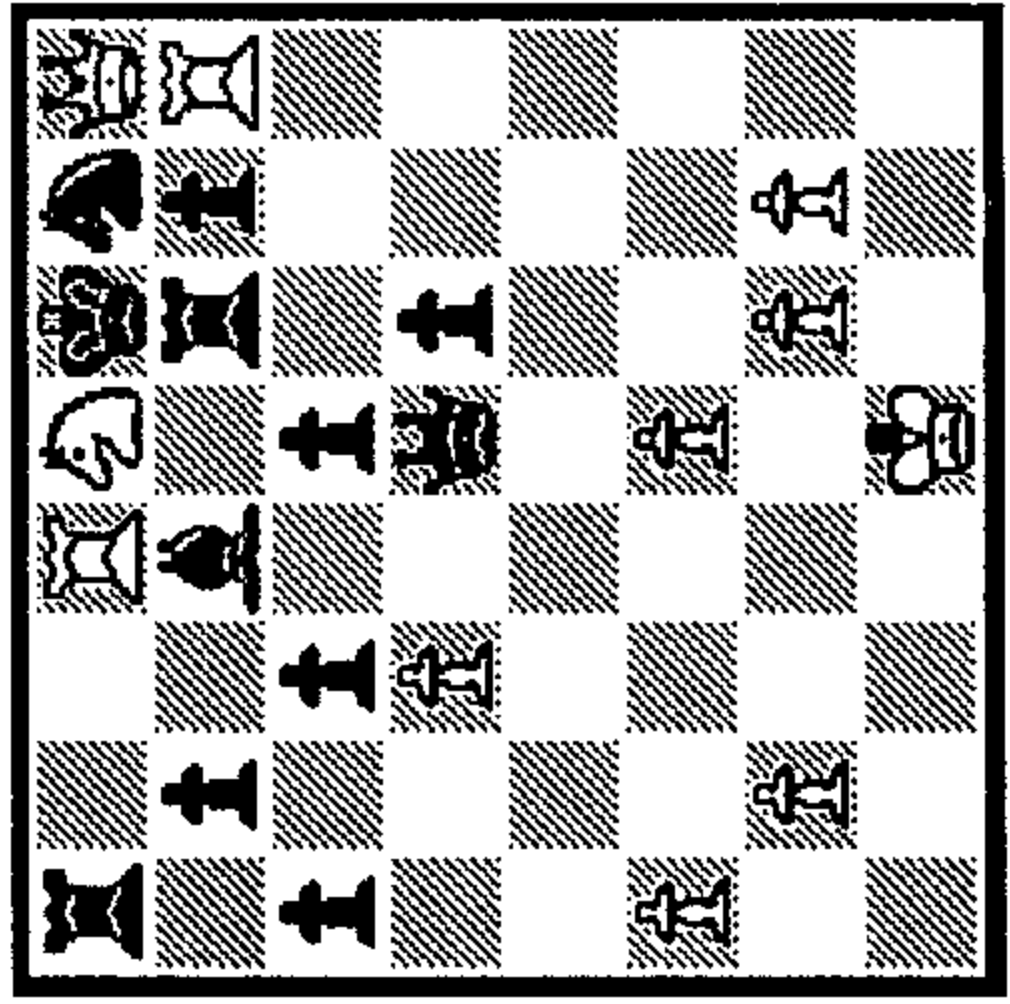
29 1..?

1-
2-
3-



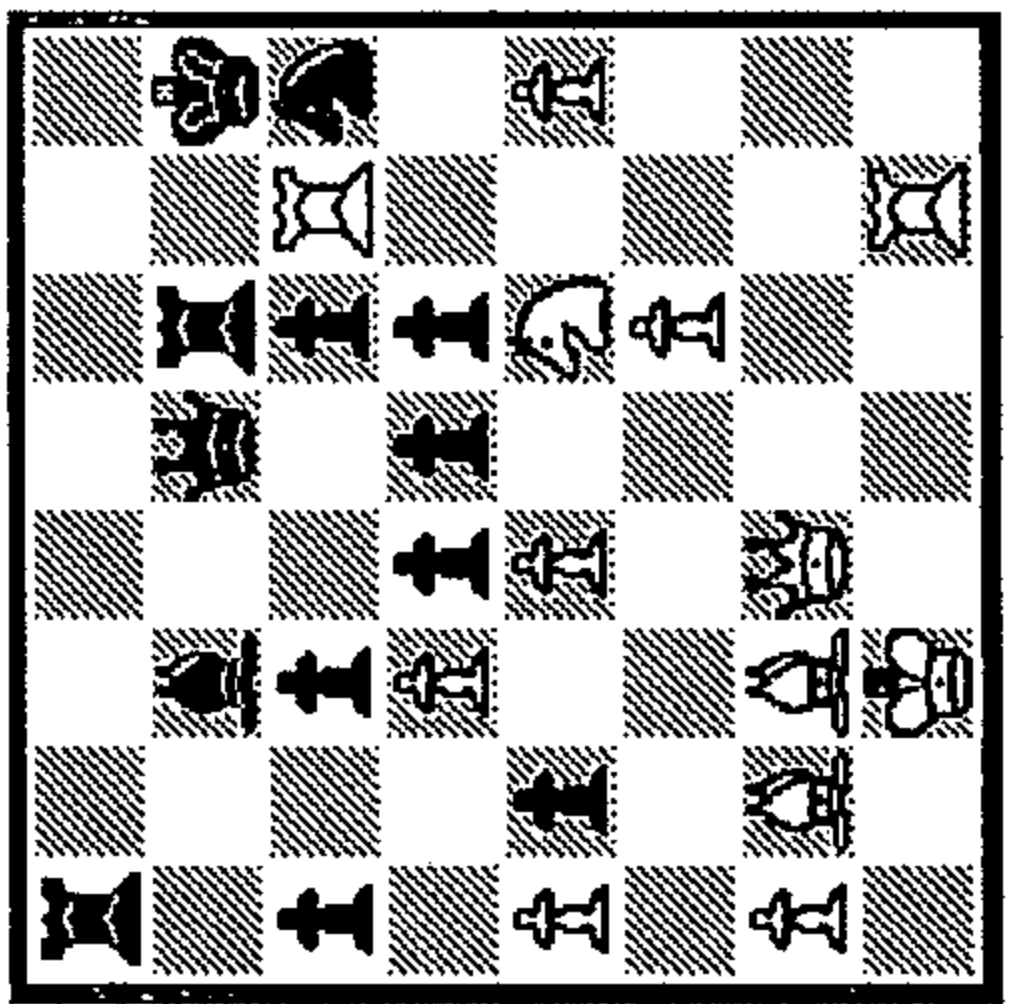
30 1..?

1-
2-
3-



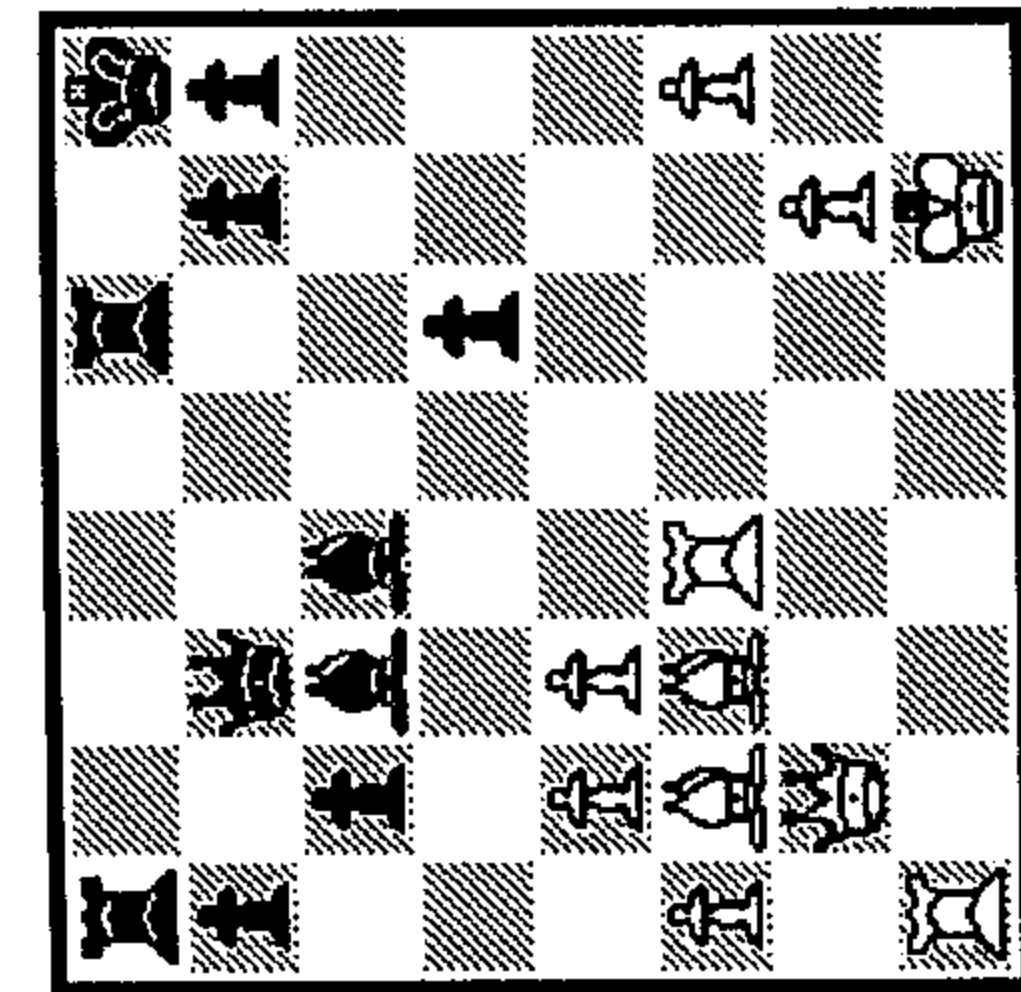
35 1..?

1-
2-
3-



36 1..?

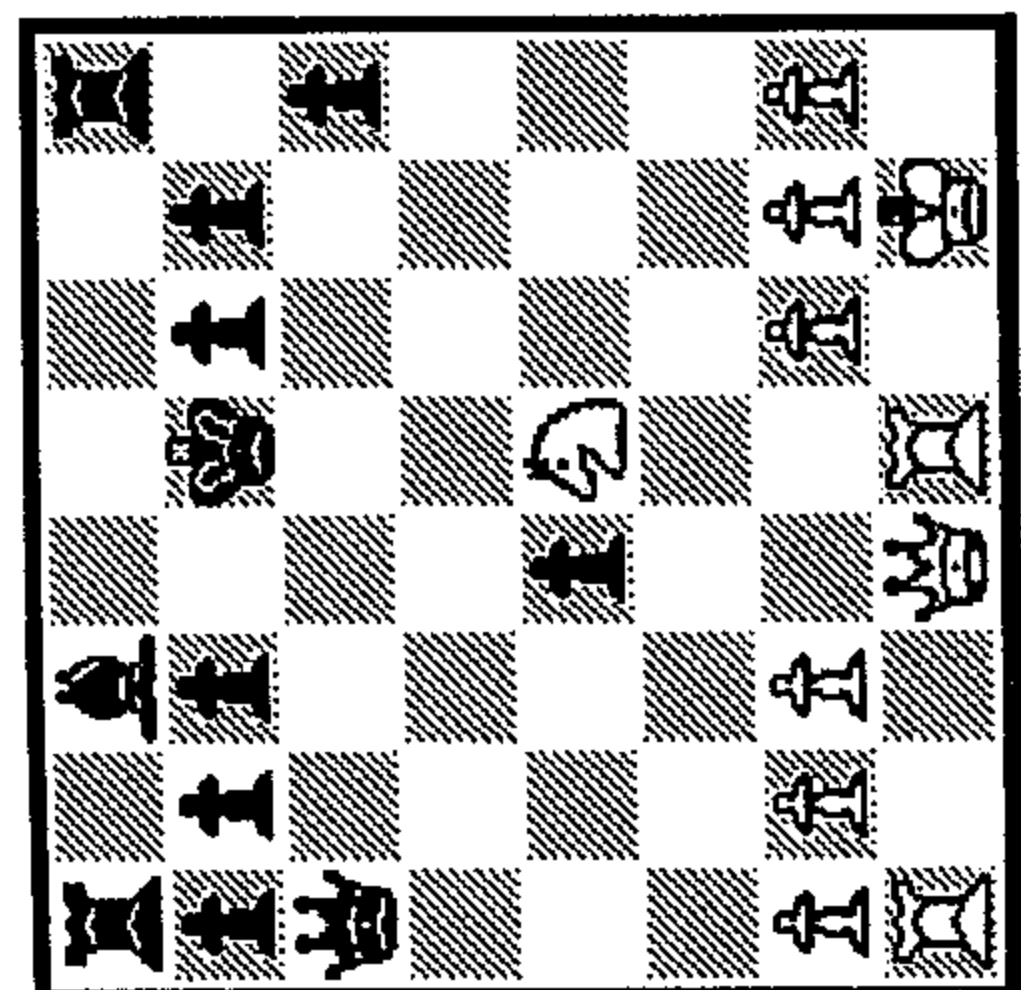
1-
2-
3-



37

1.?

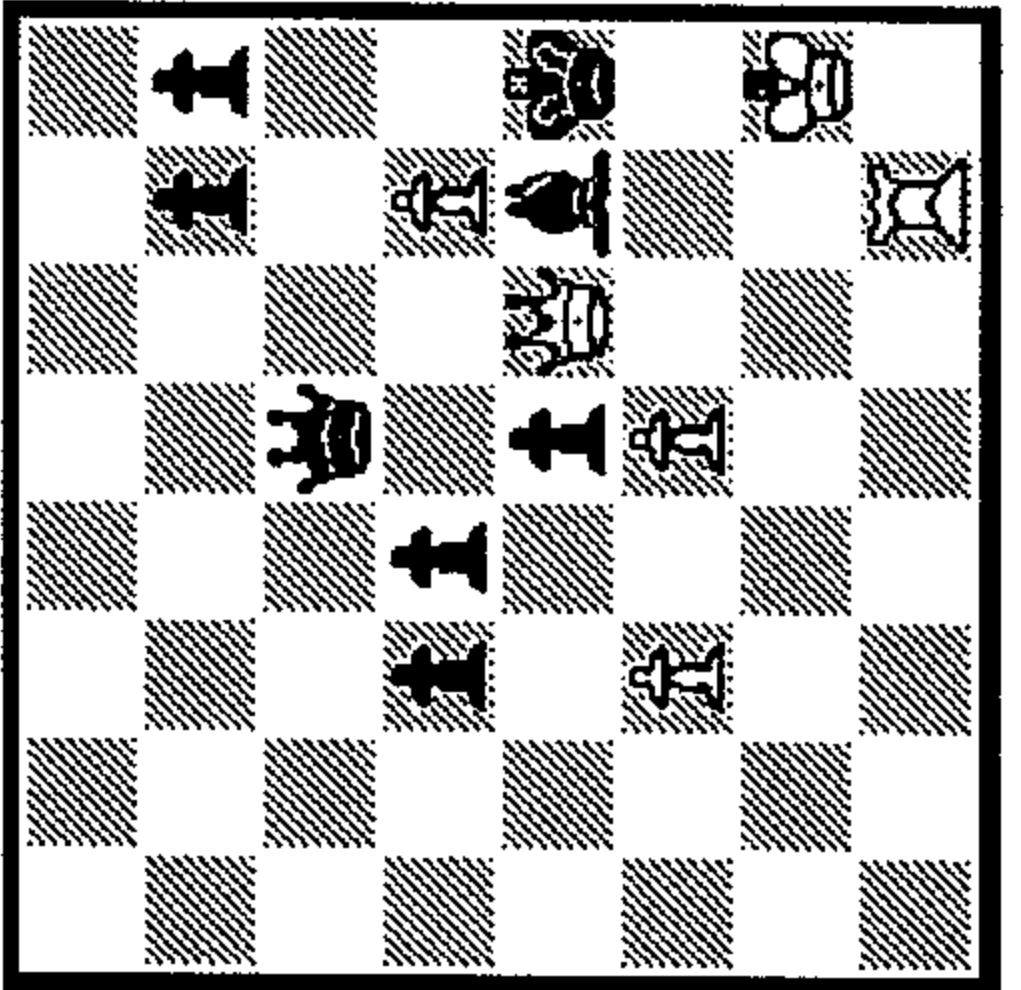
1. _
2. _
3. _



38

1.?

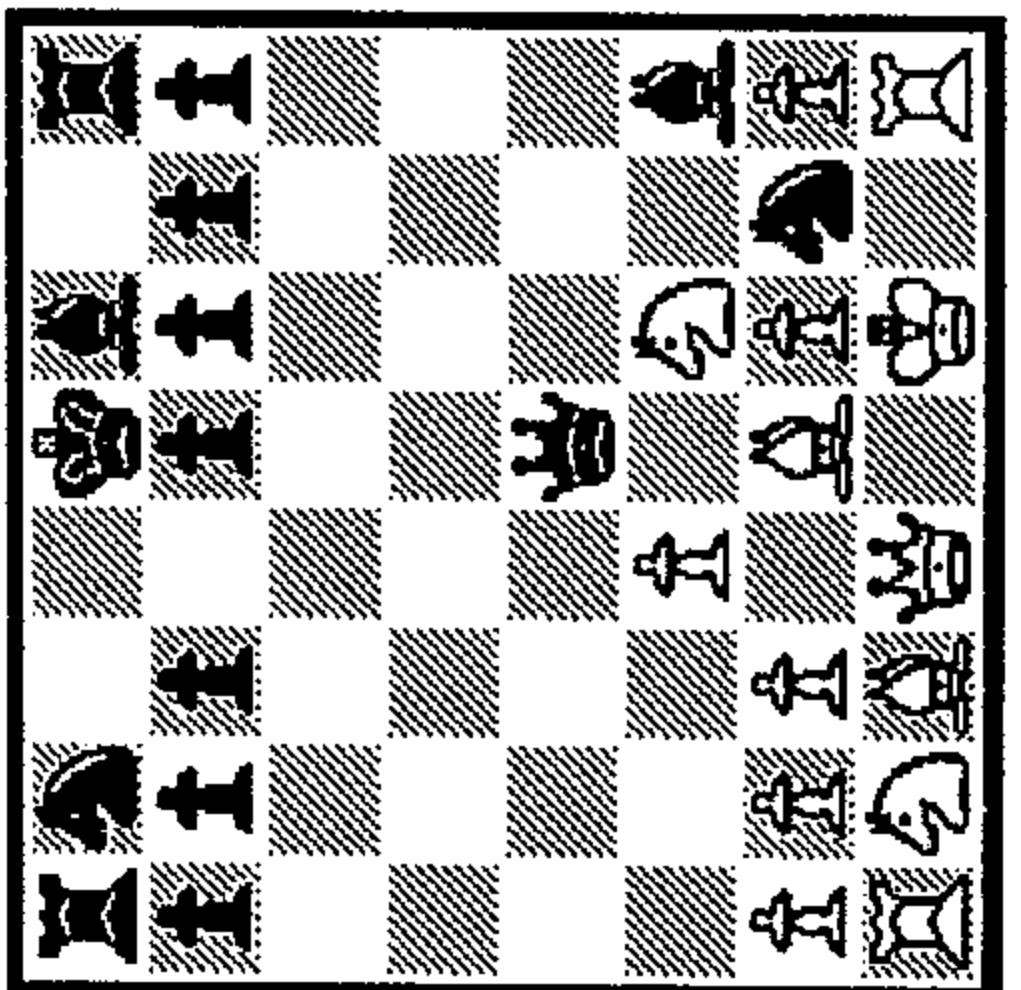
1. _
2. _
3. _



43

1.?

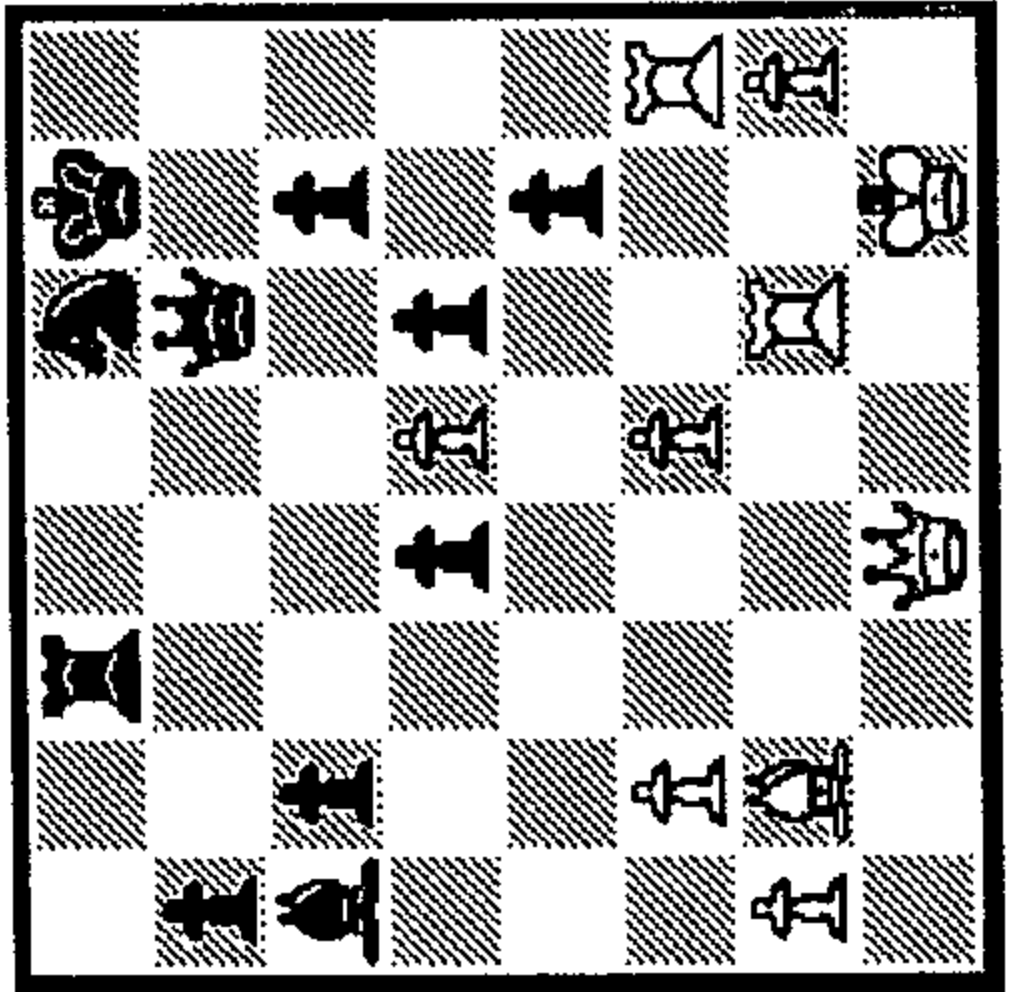
1. _
2. _
3. _



44

1...?

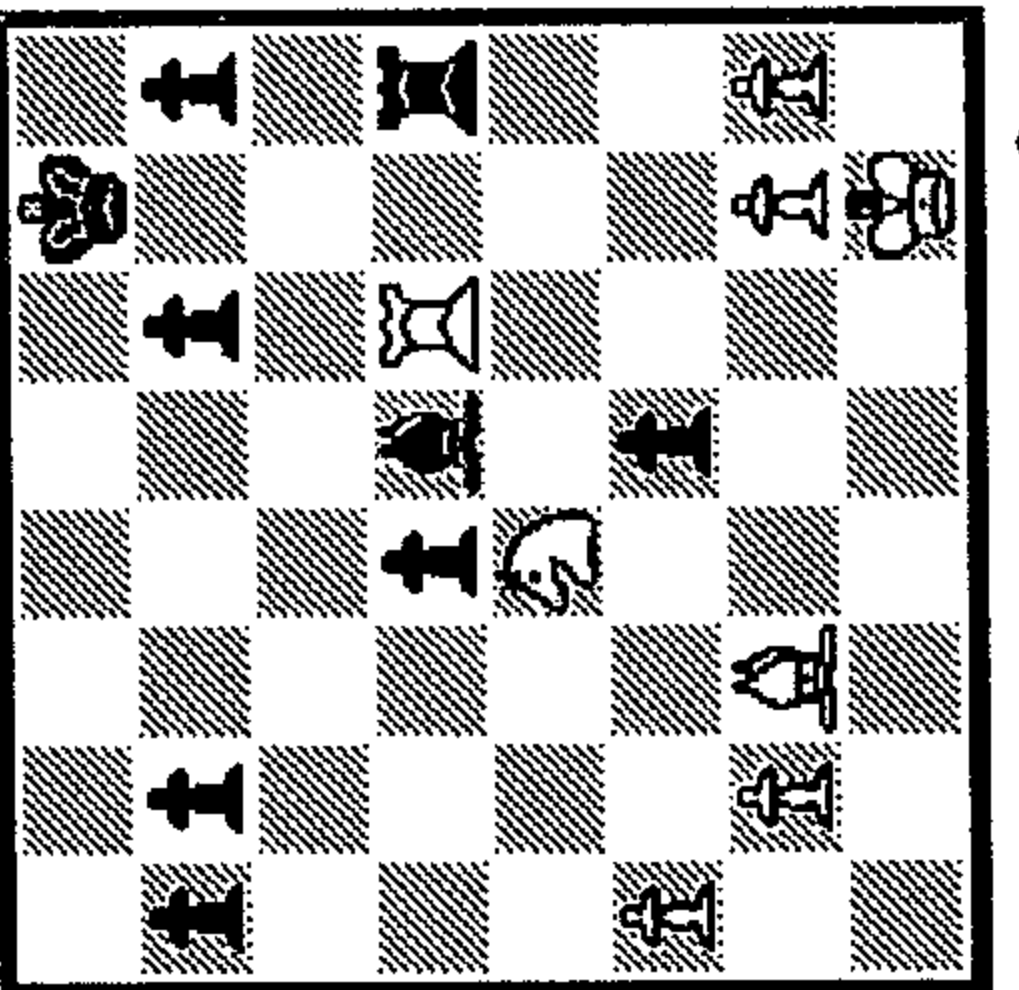
1. _
2. _
3. _



39

1.?

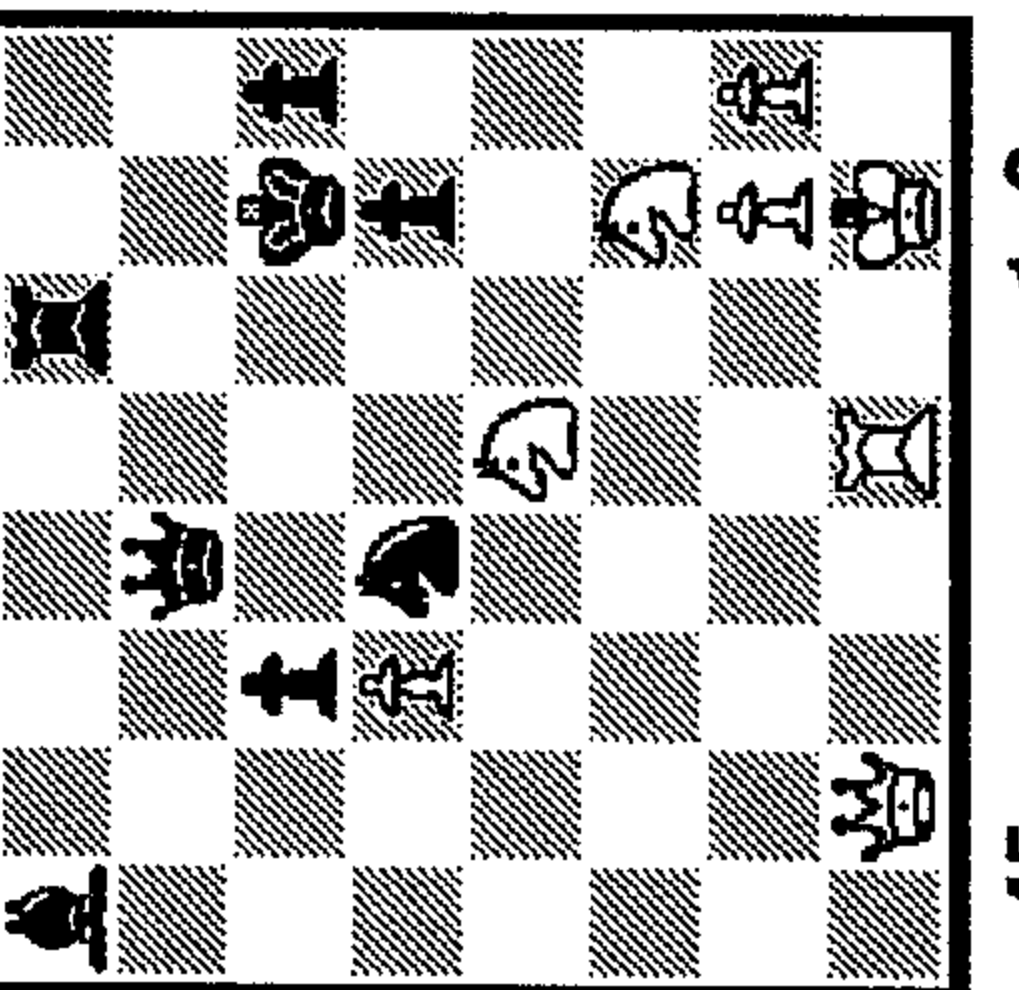
1. _
2. _
3. _



40

1...?

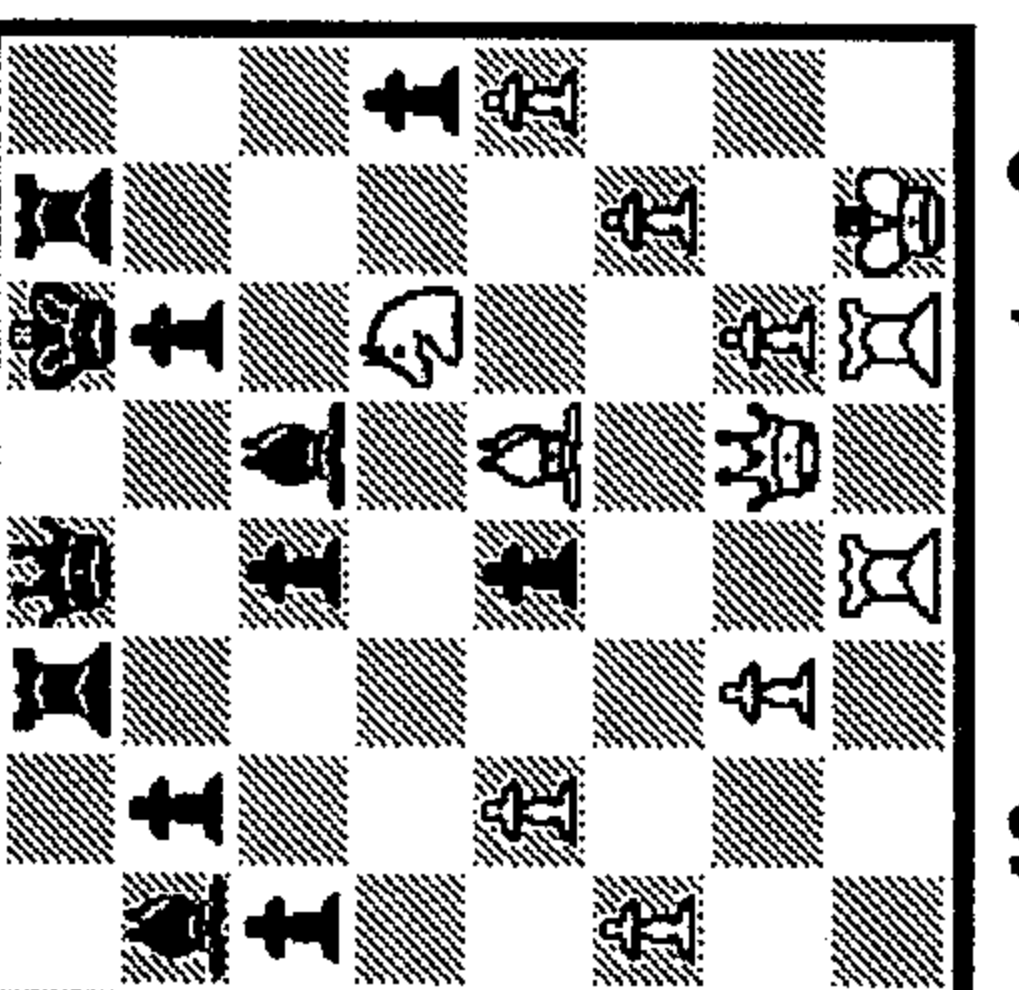
1. _
2. _
3. _



45

1.?

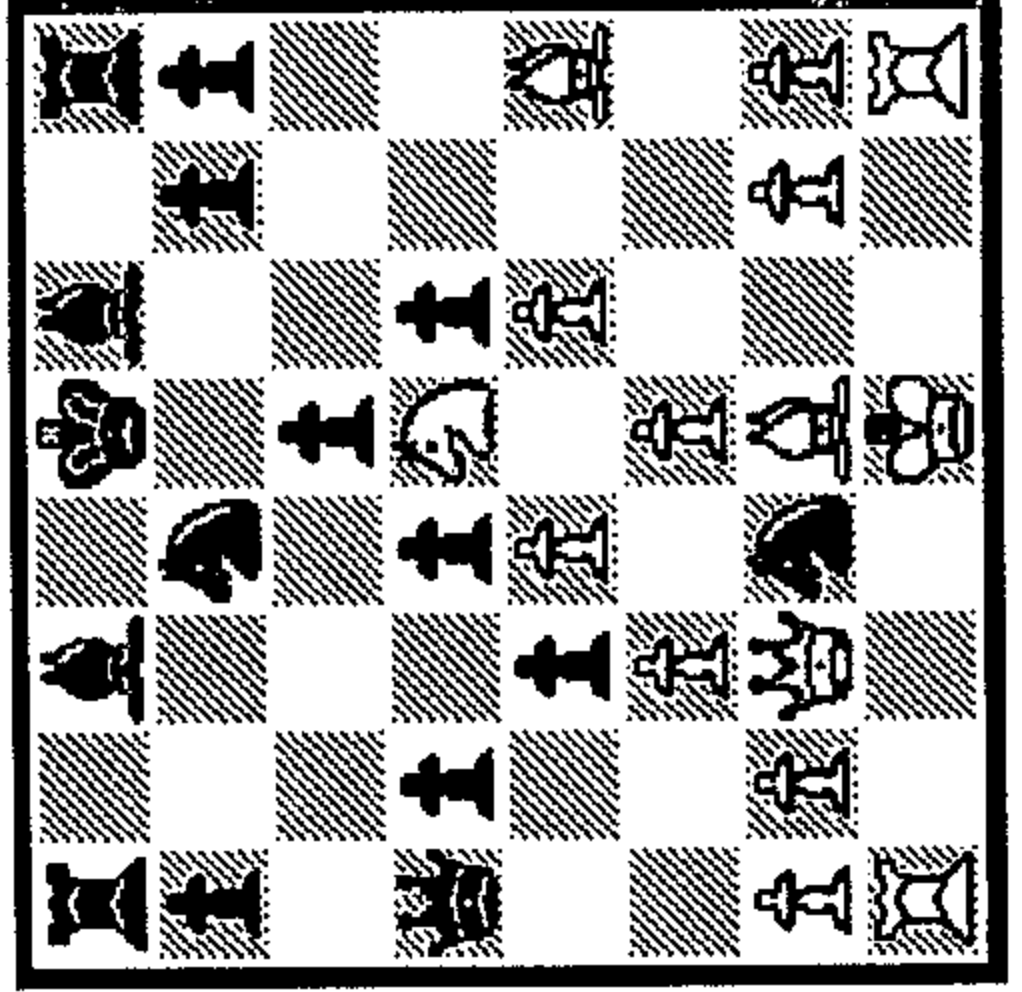
1. _
2. _
3. _



46

1...?

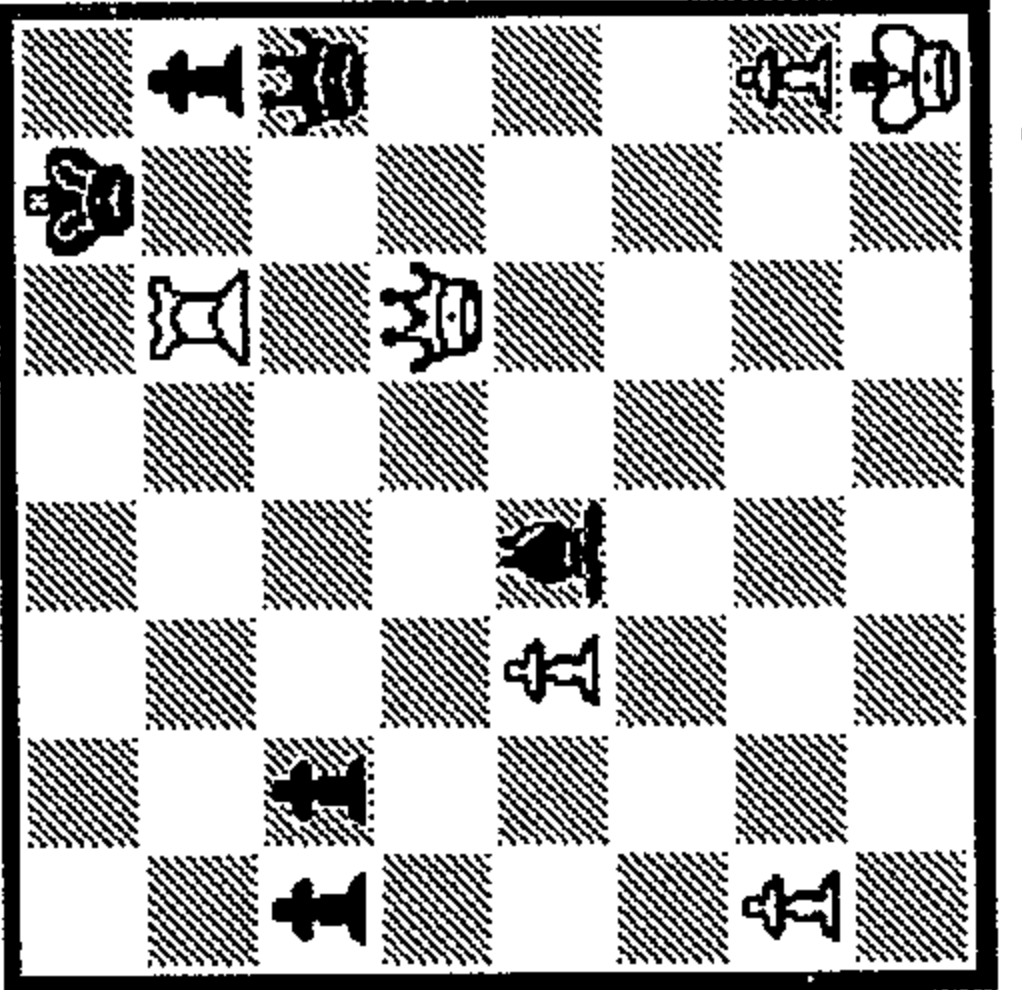
1. _
2. _
3. _



41

1.?

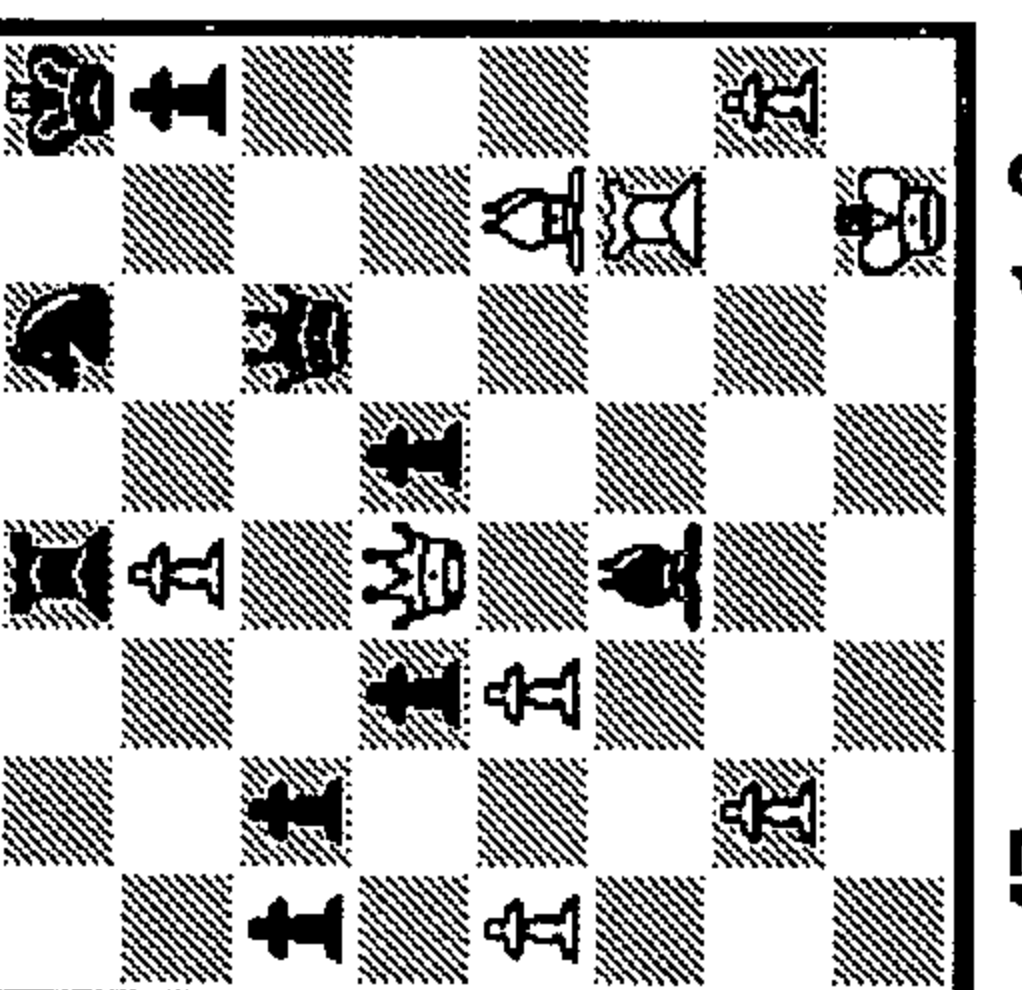
1. _
2. _
3. _



42

1.?

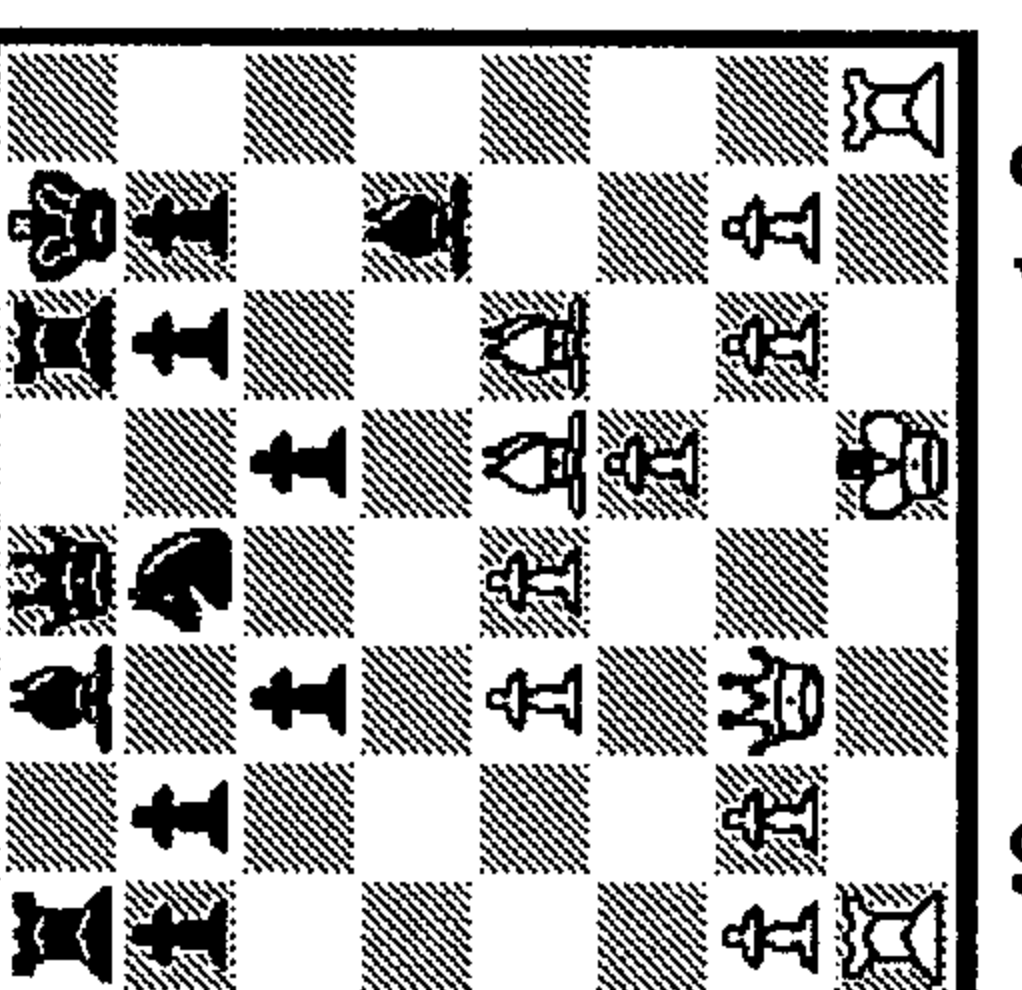
1. _
2. _
3. _



47

1.?

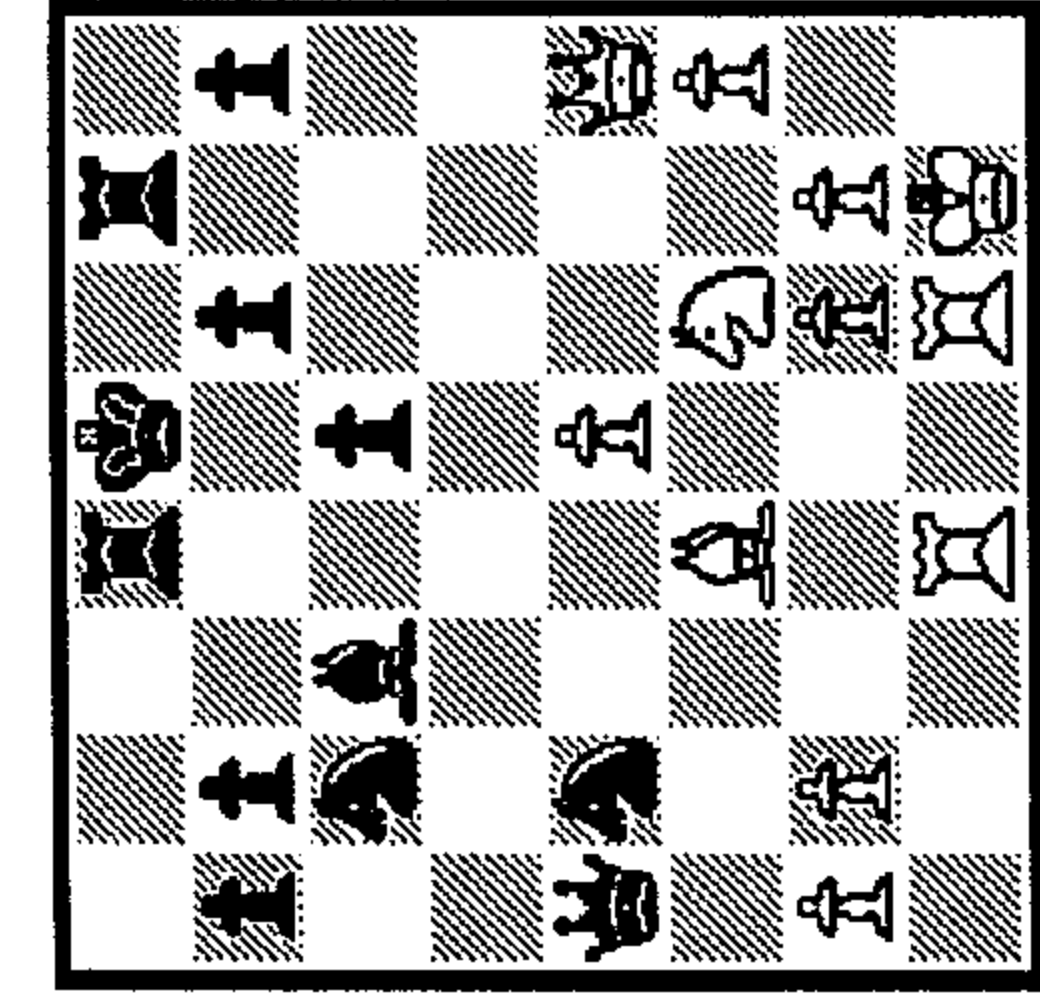
1. _
2. _
3. _



48

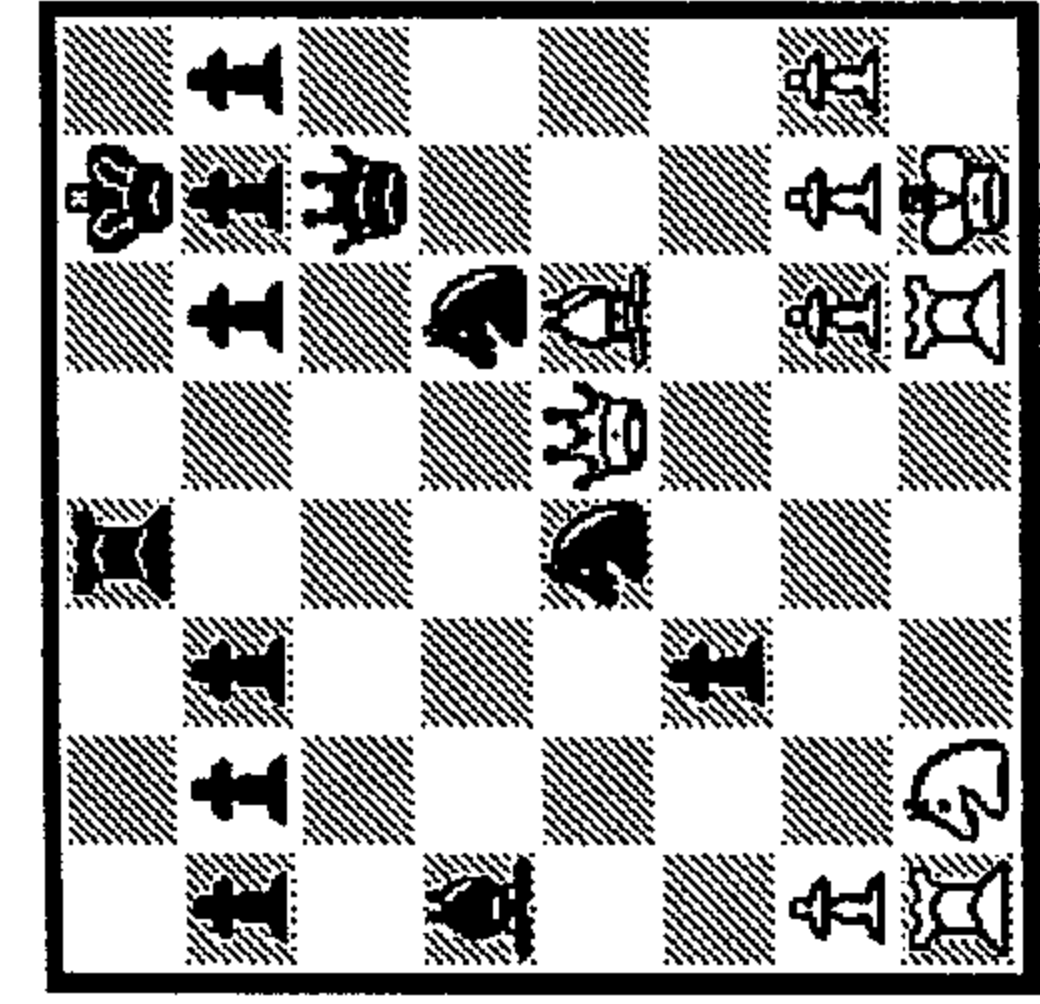
1.?

1. _
2. _
3. _



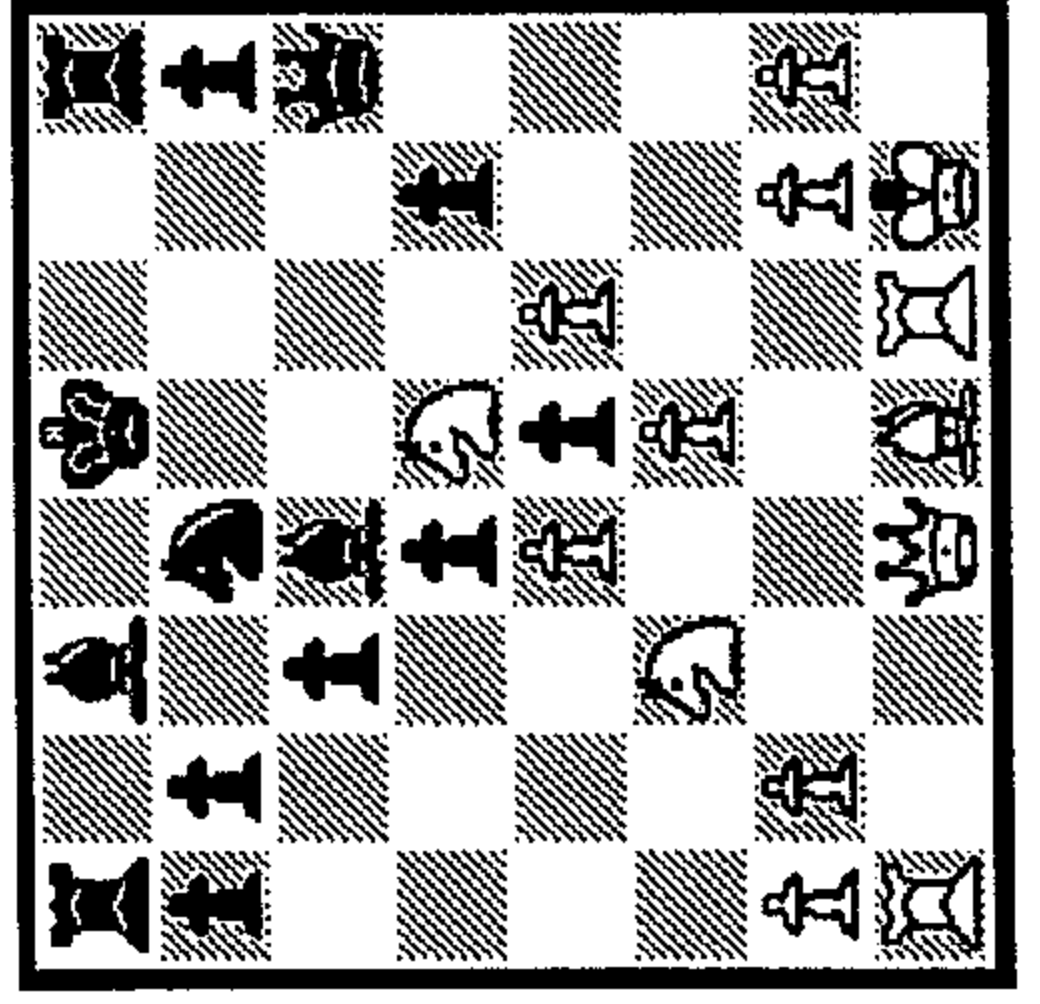
49 1...?

- 1_
- 2_
- 3_



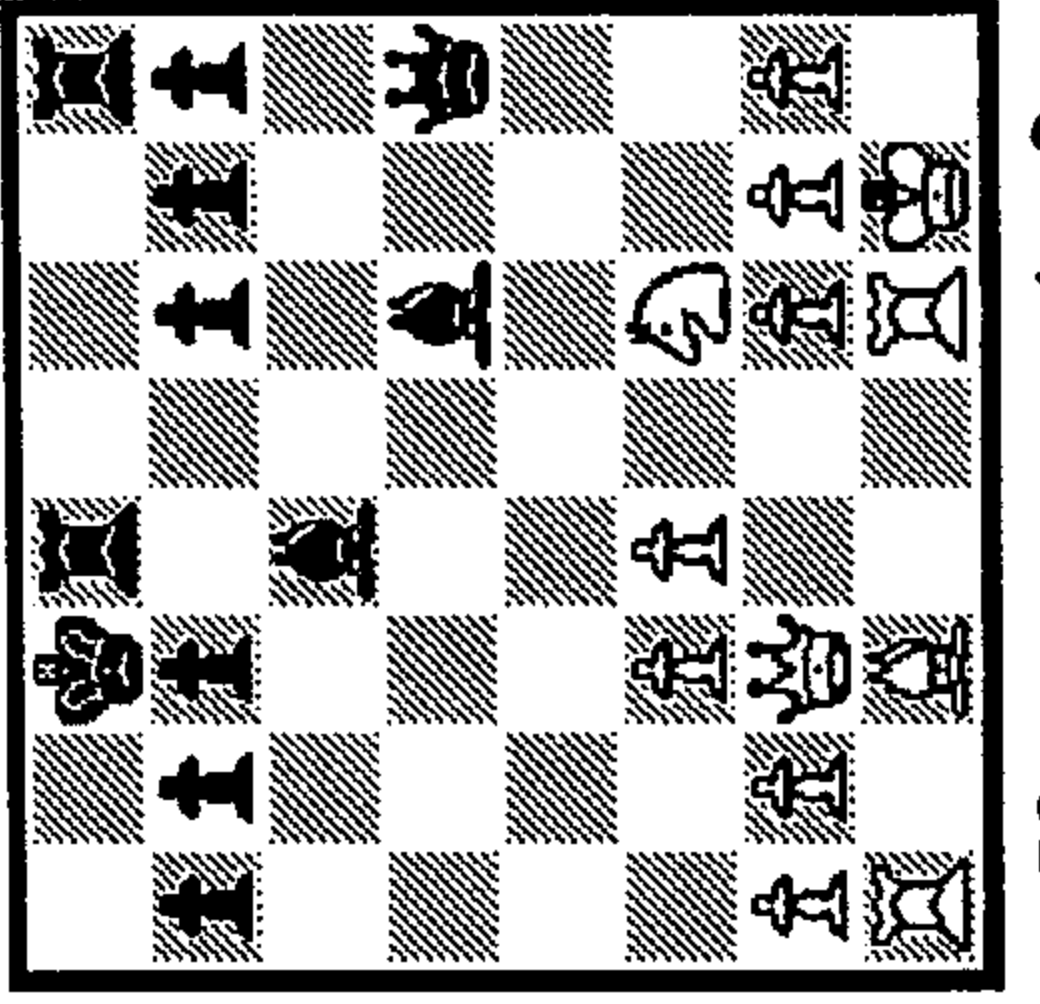
50 1...?

- 1_
- 2_
- 3_



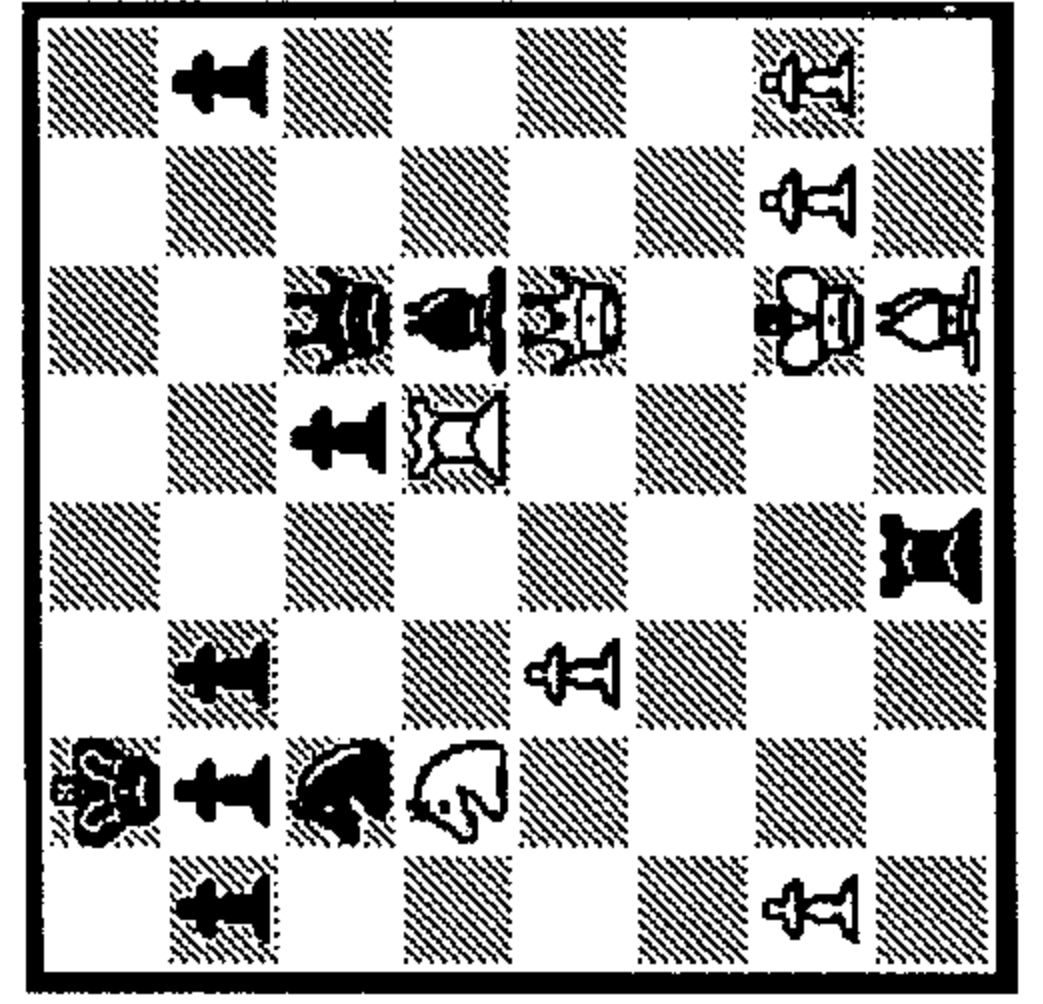
55 1..?

- 1_
- 2_
- 3_



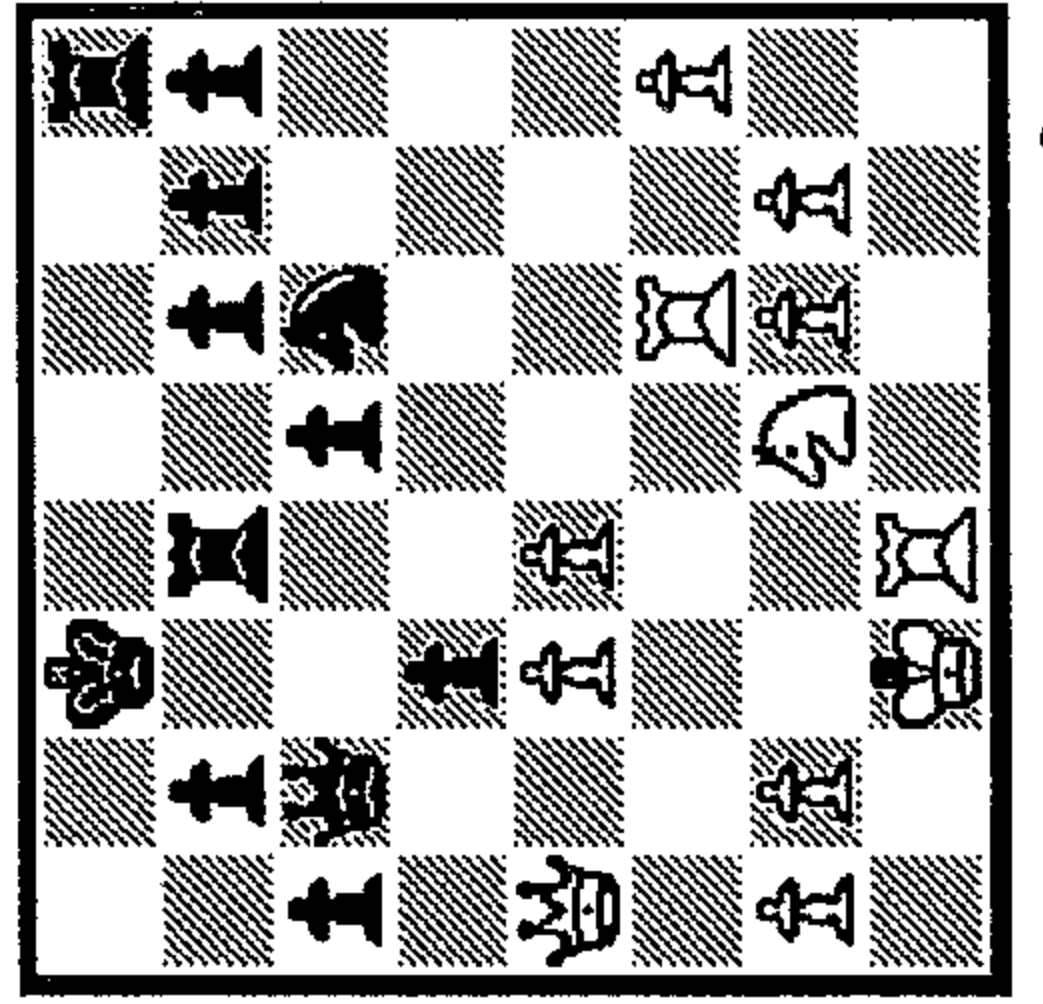
56 1...?

- 1_
- 2_
- 3_



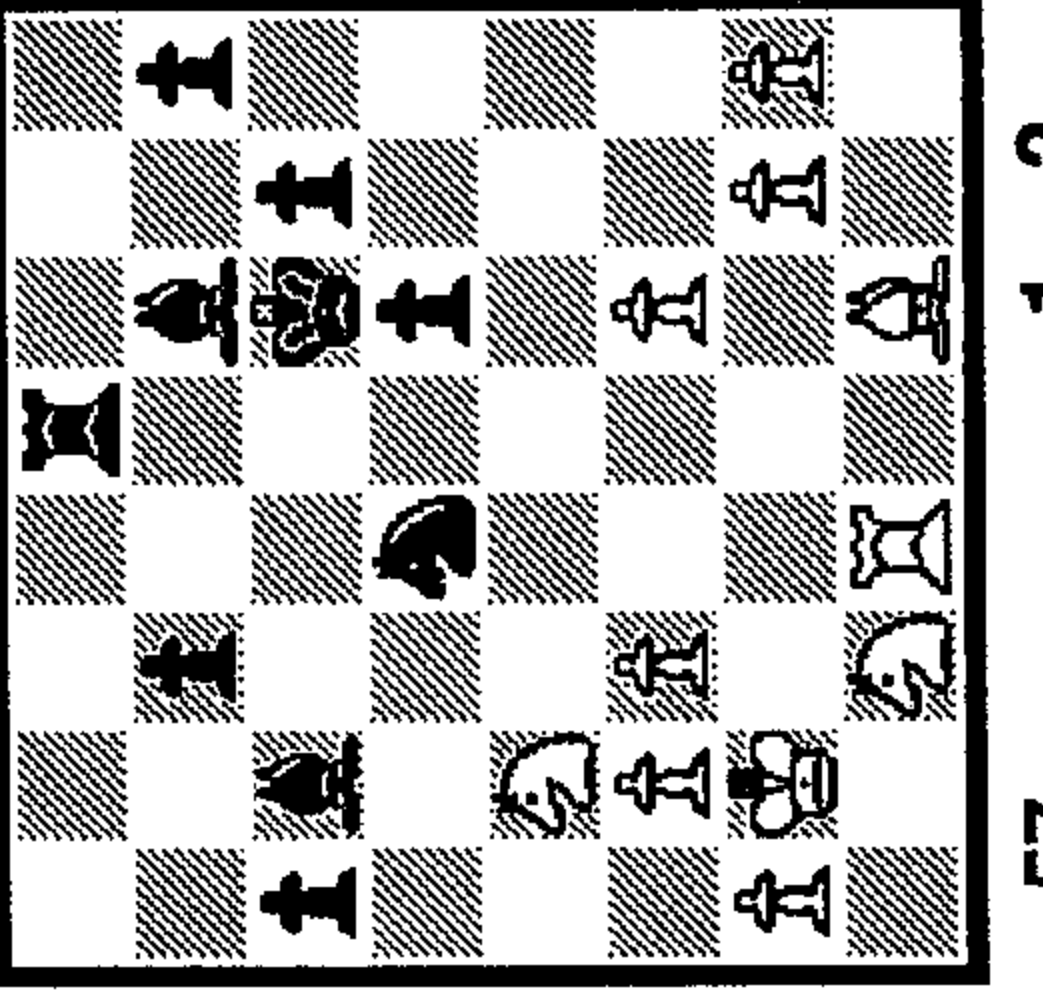
51 1...?

- 1_
- 2_
- 3_



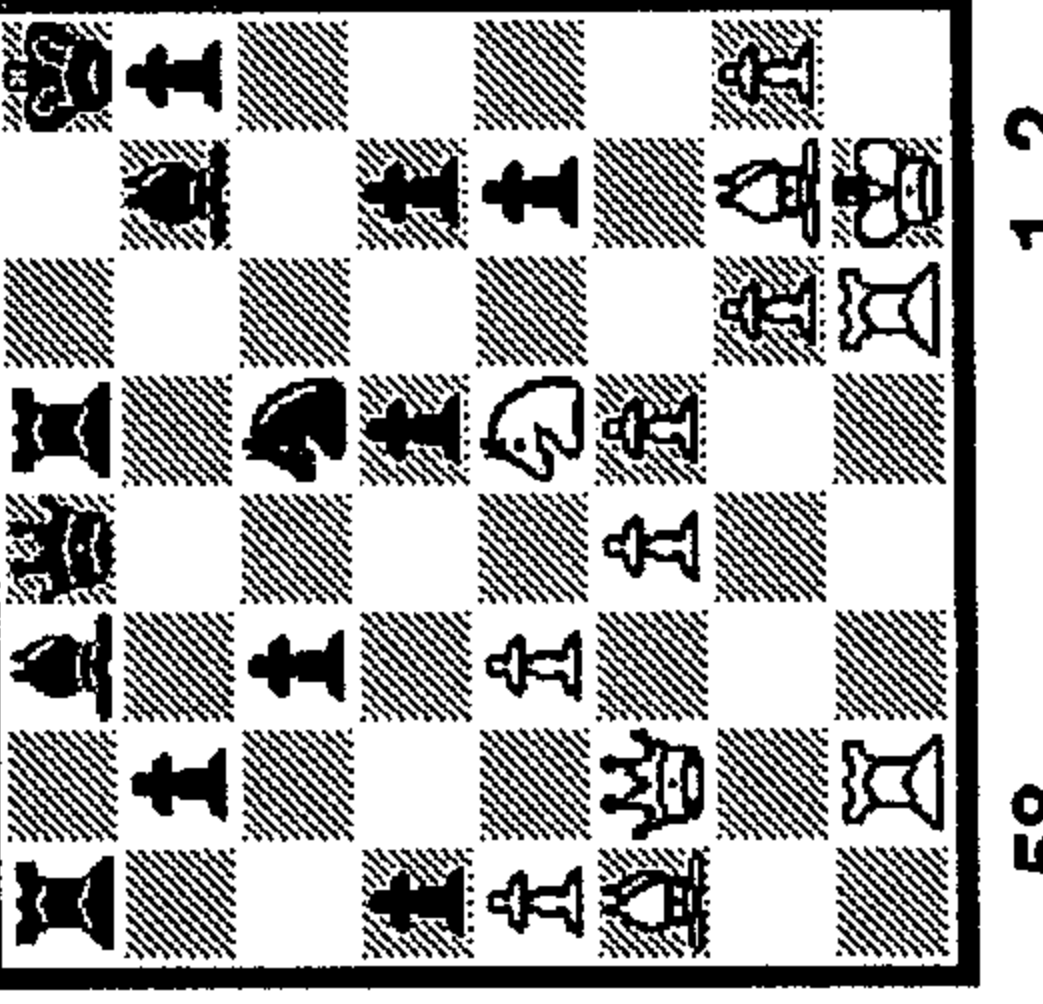
52 1..?

- 1_
- 2_
- 3_



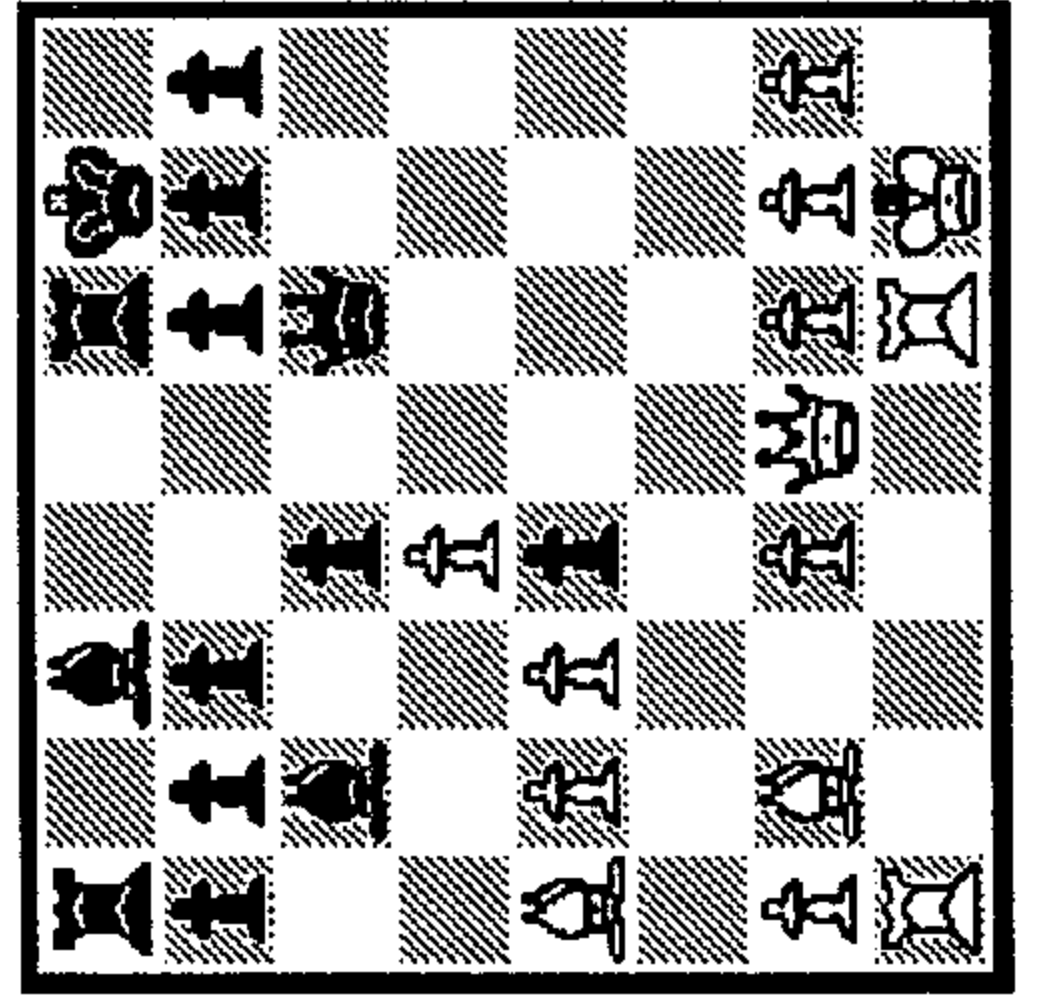
57 1...?

- 1_
- 2_
- 3_



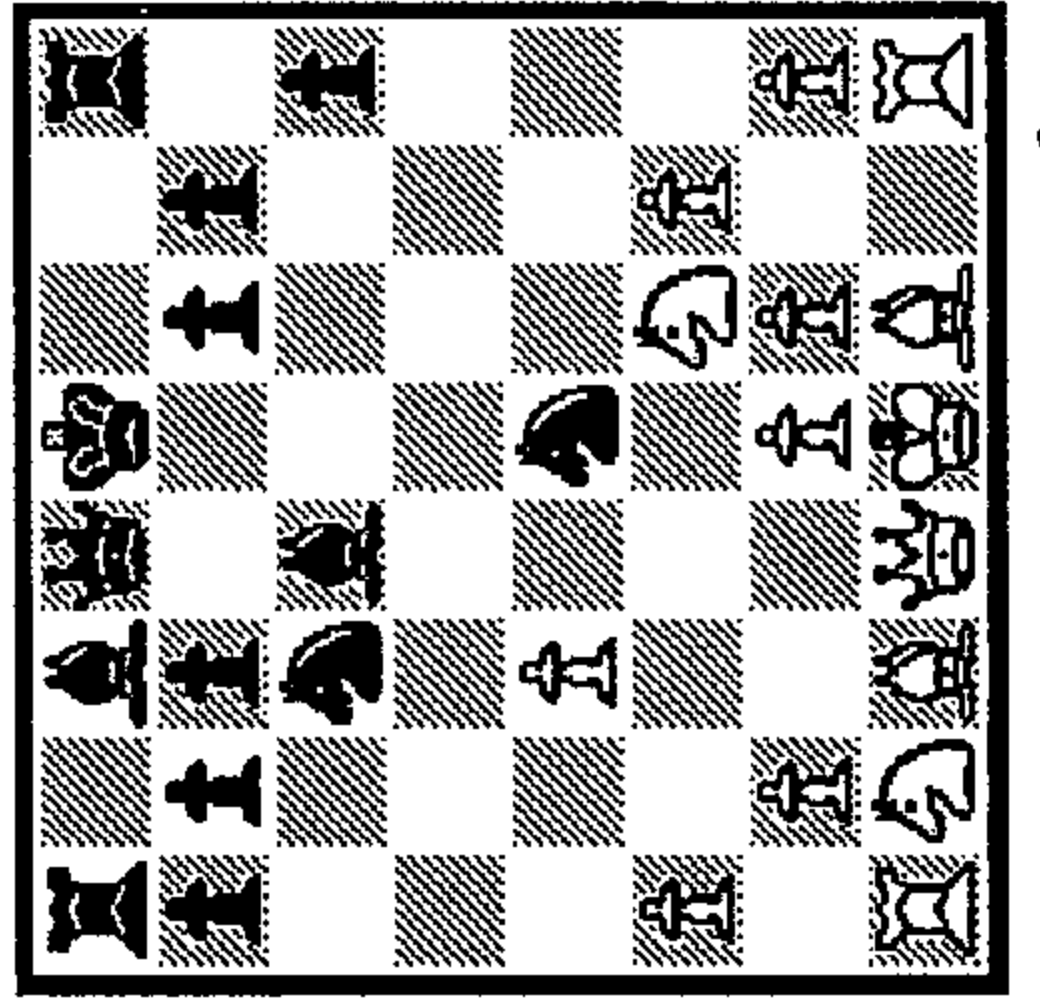
58 1..?

- 1_
- 2_
- 3_



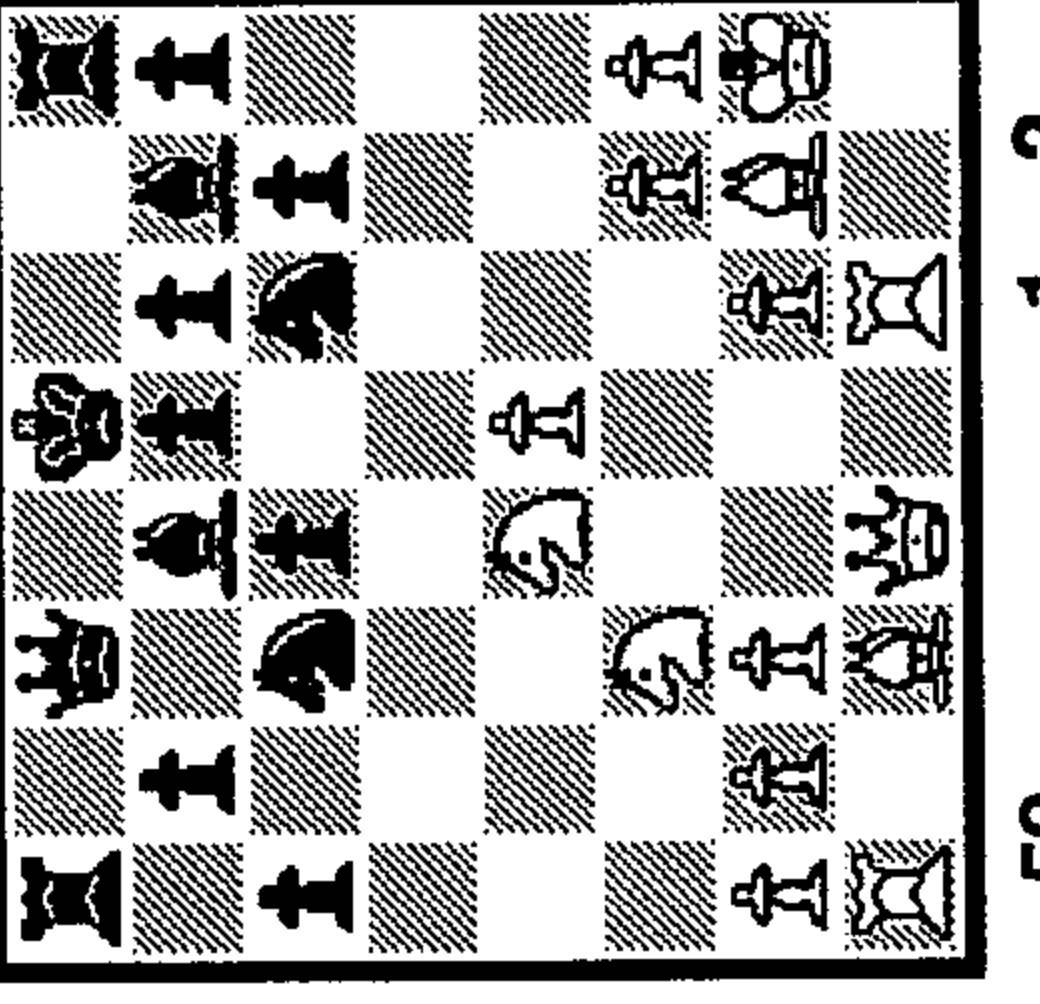
53 1...?

- 1_
- 2_
- 3_



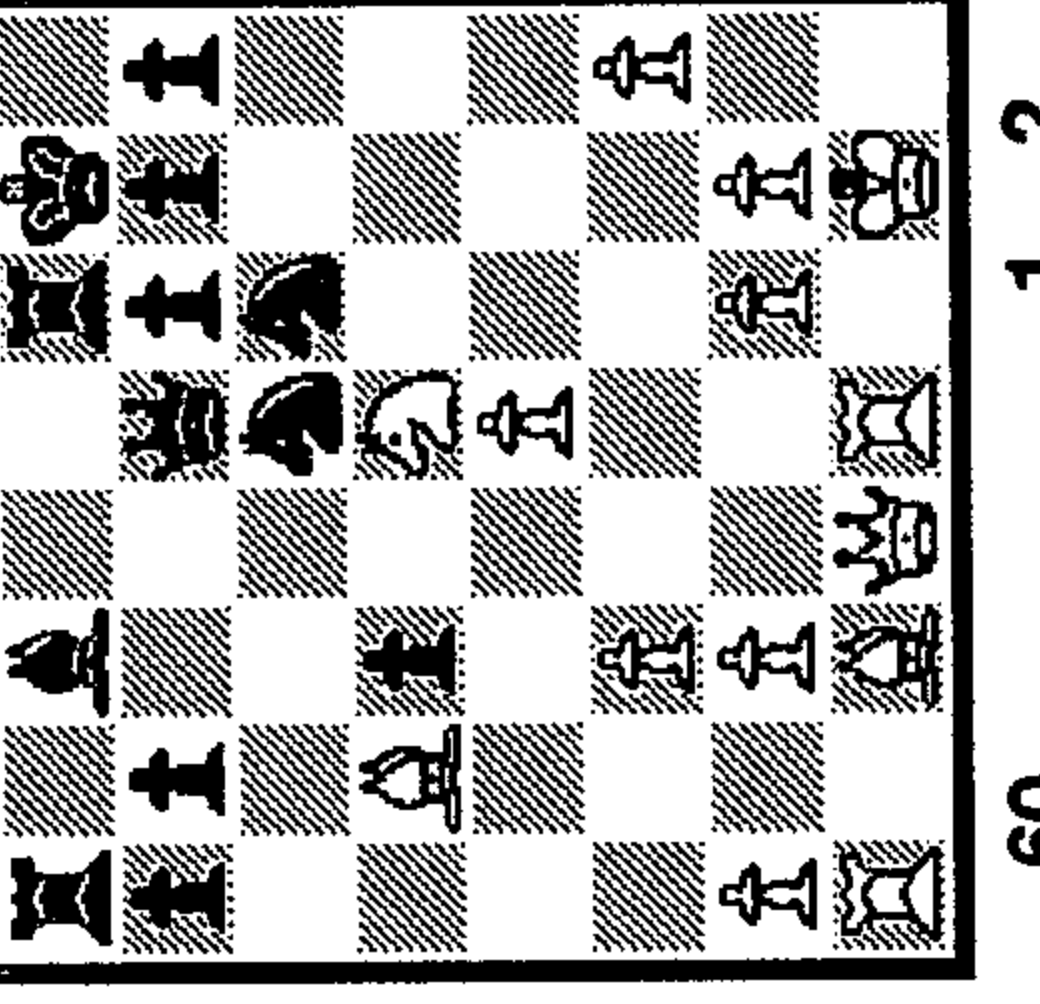
54 1...?

- 1_
- 2_
- 3_



59 1...?

- 1_
- 2_
- 3_



60 1...?

- 1_
- 2_
- 3_