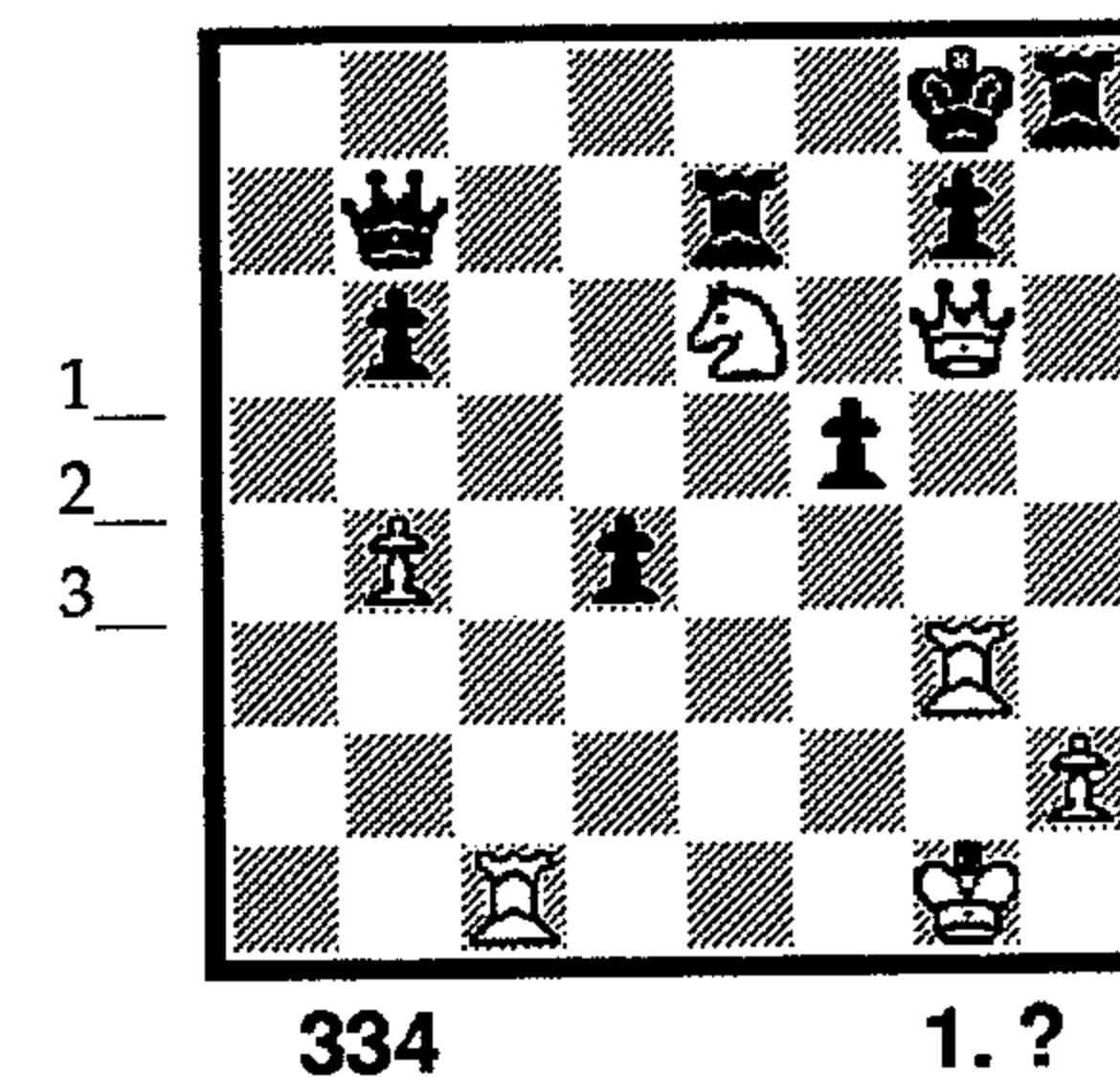
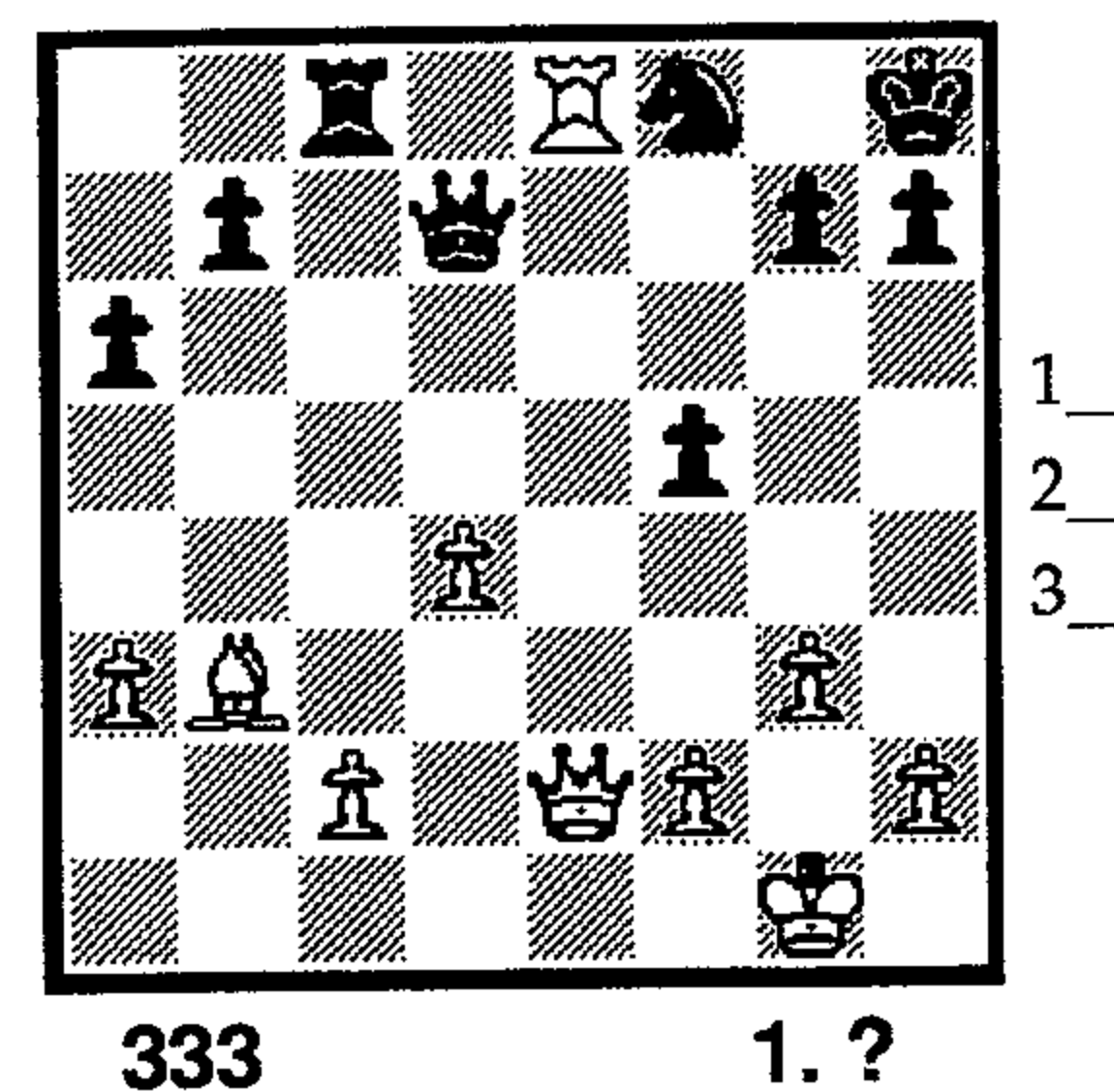
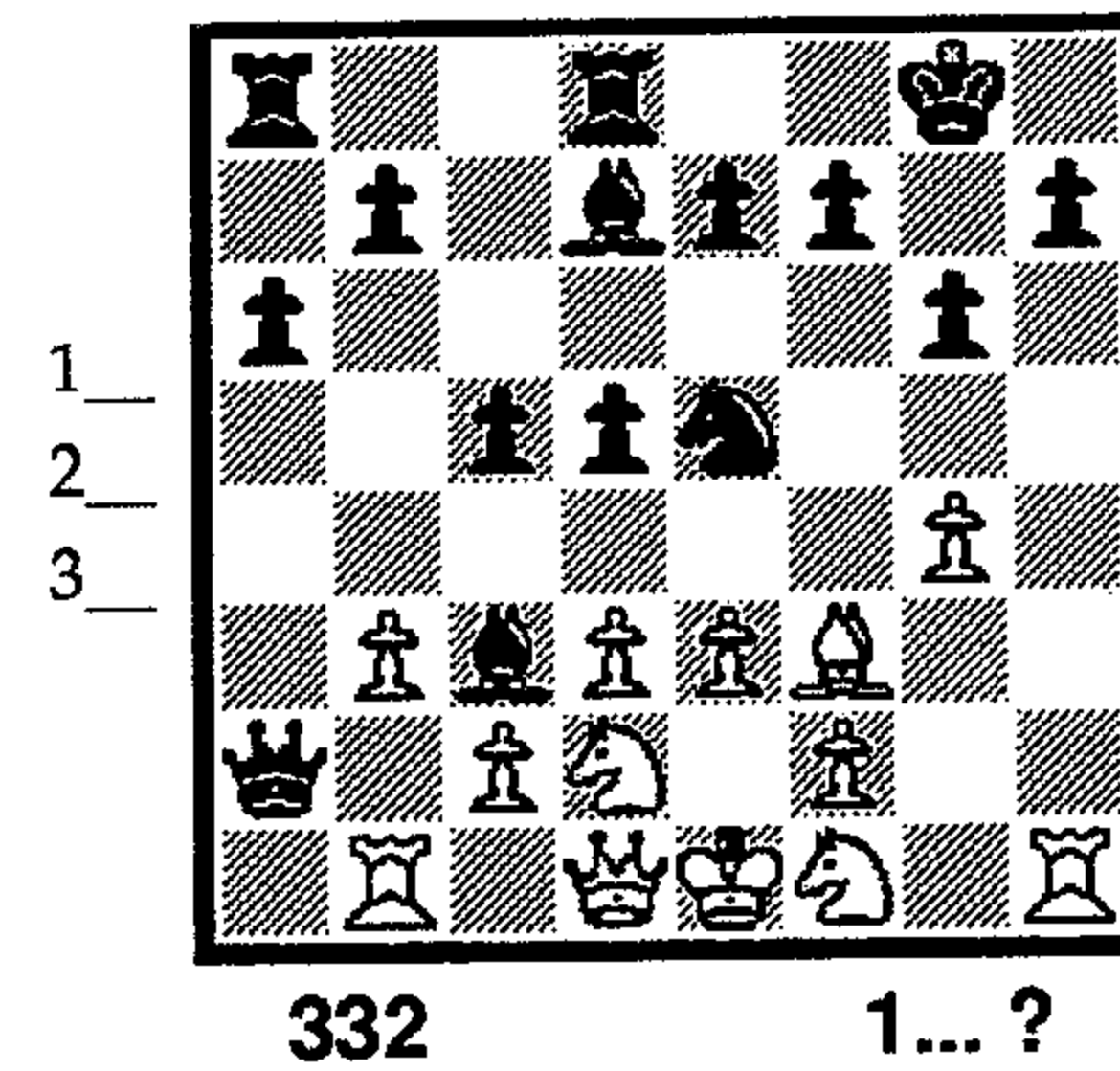
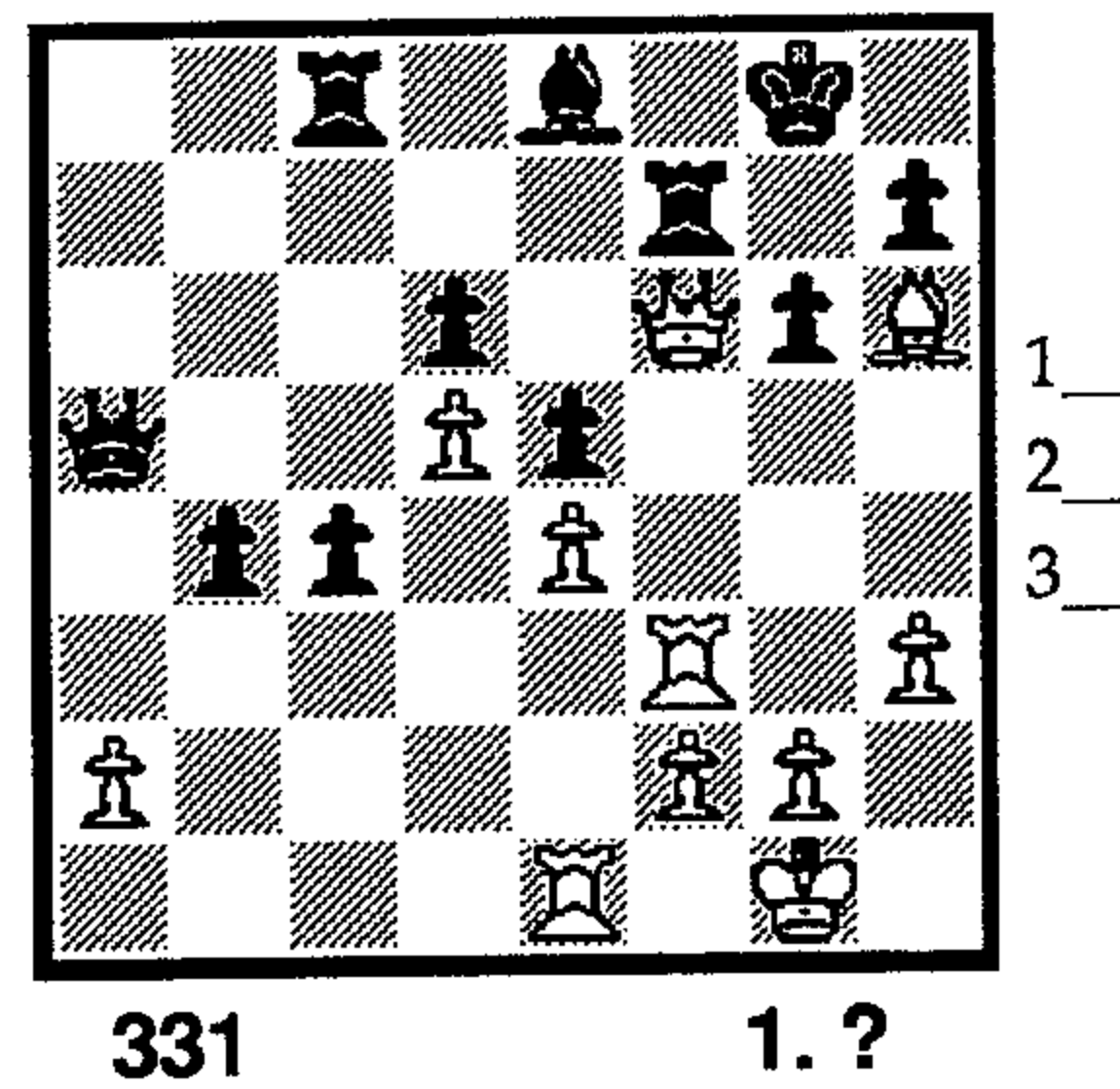
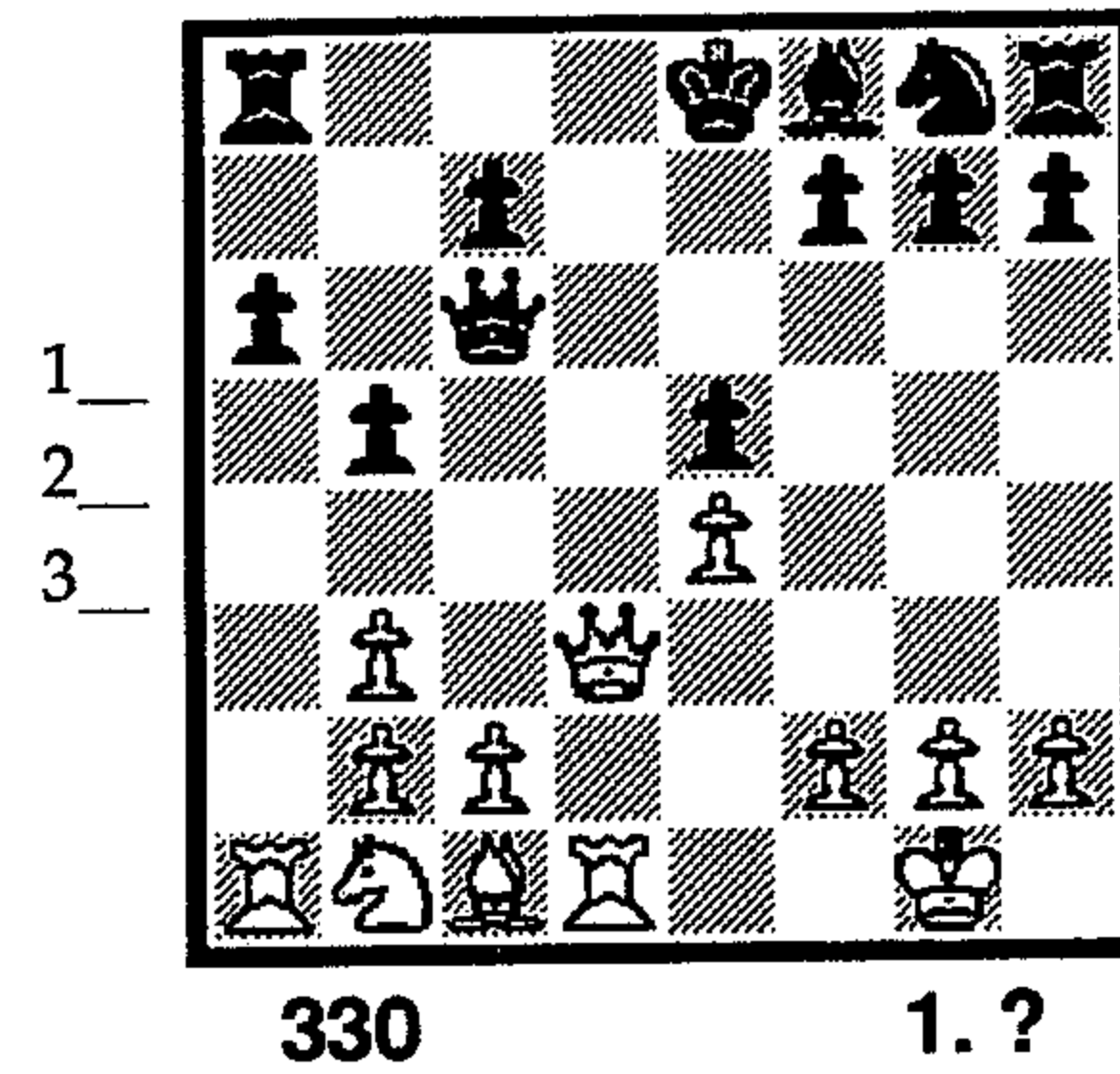
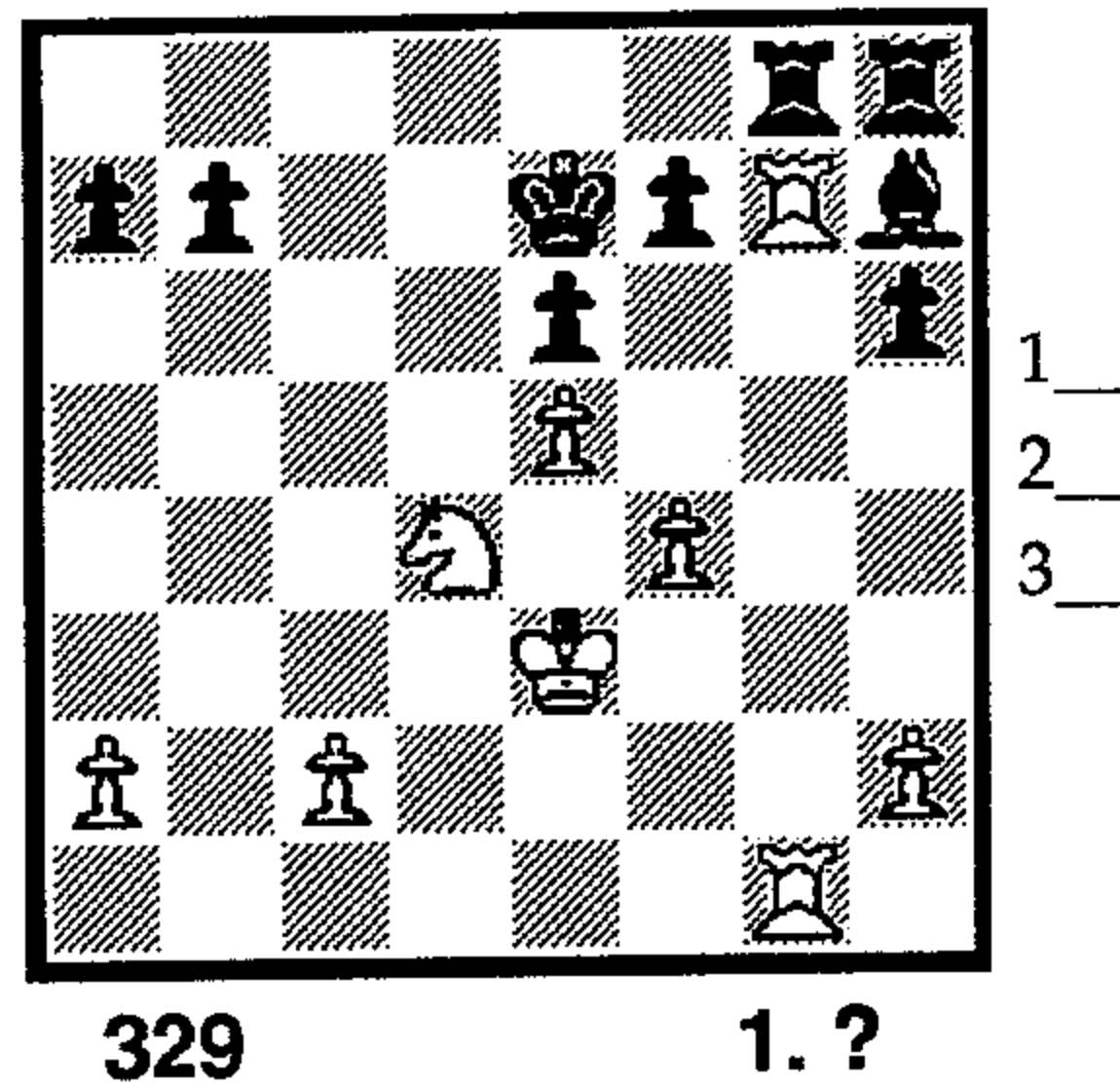
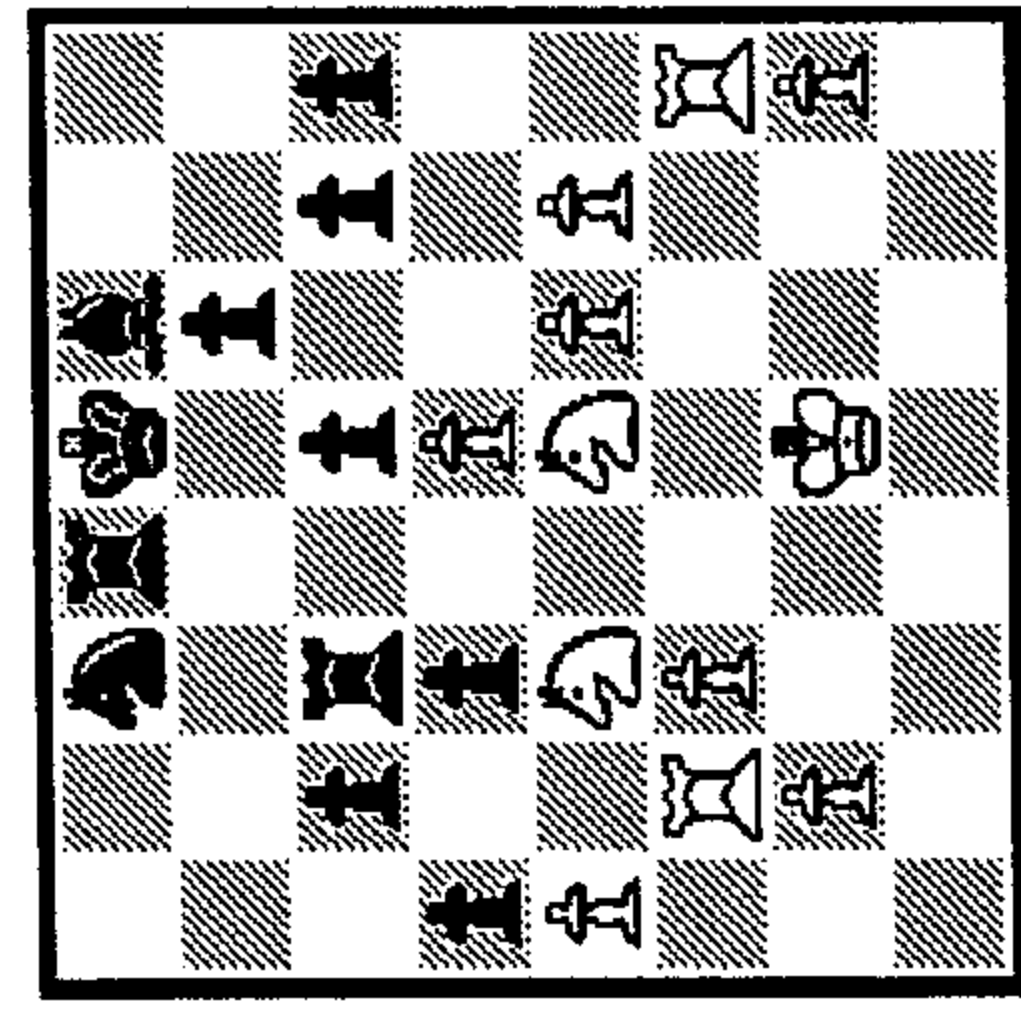


DIVERSION

Diversion is a motif in which we divert an enemy piece from an important post. Once the piece is diverted we can then exploit the new setting to attack other vital elements of the opponent's position. Often the diverted piece is charged with protecting another. Its diversion leaves the other piece underdefended and hence vulnerable. This type of operation is also called removing the guard and occurs with great frequency in chess. Close examination of these examples will pay great dividends.

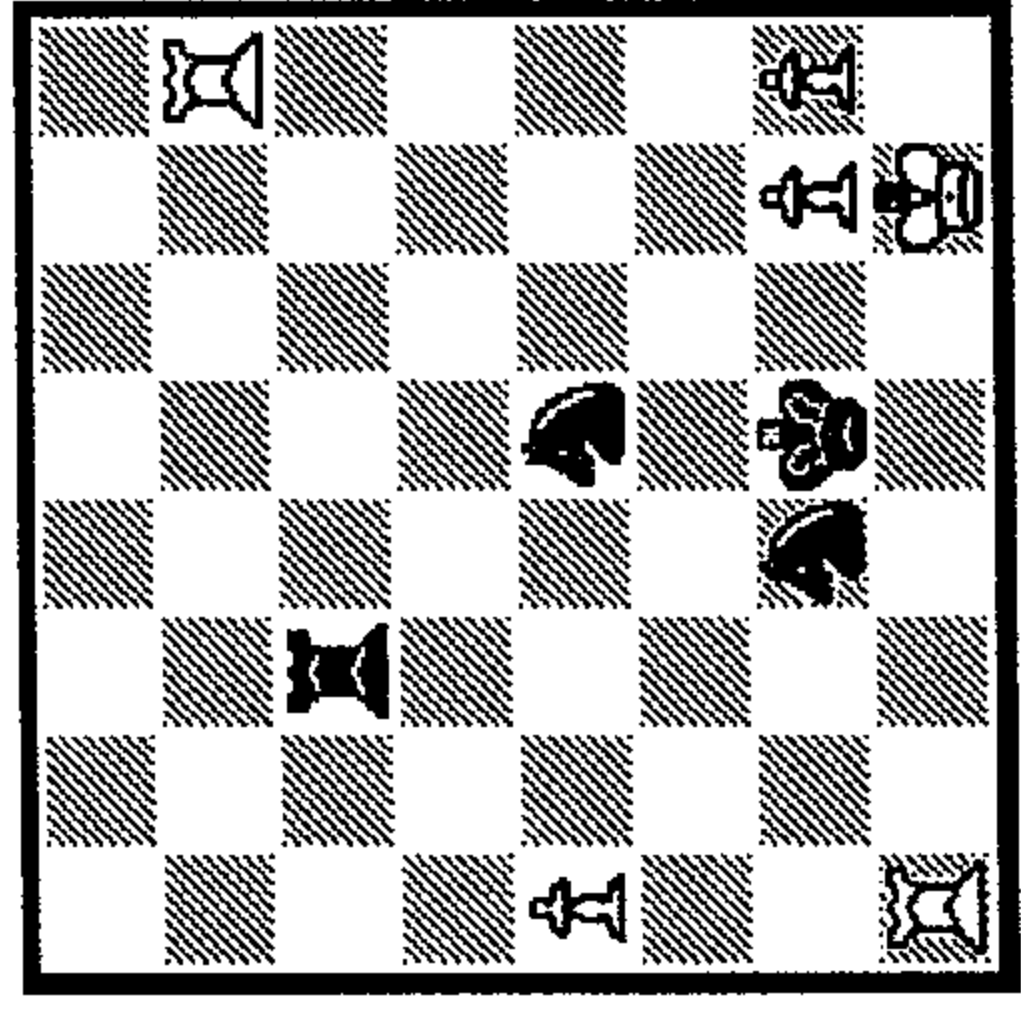




335

1.?

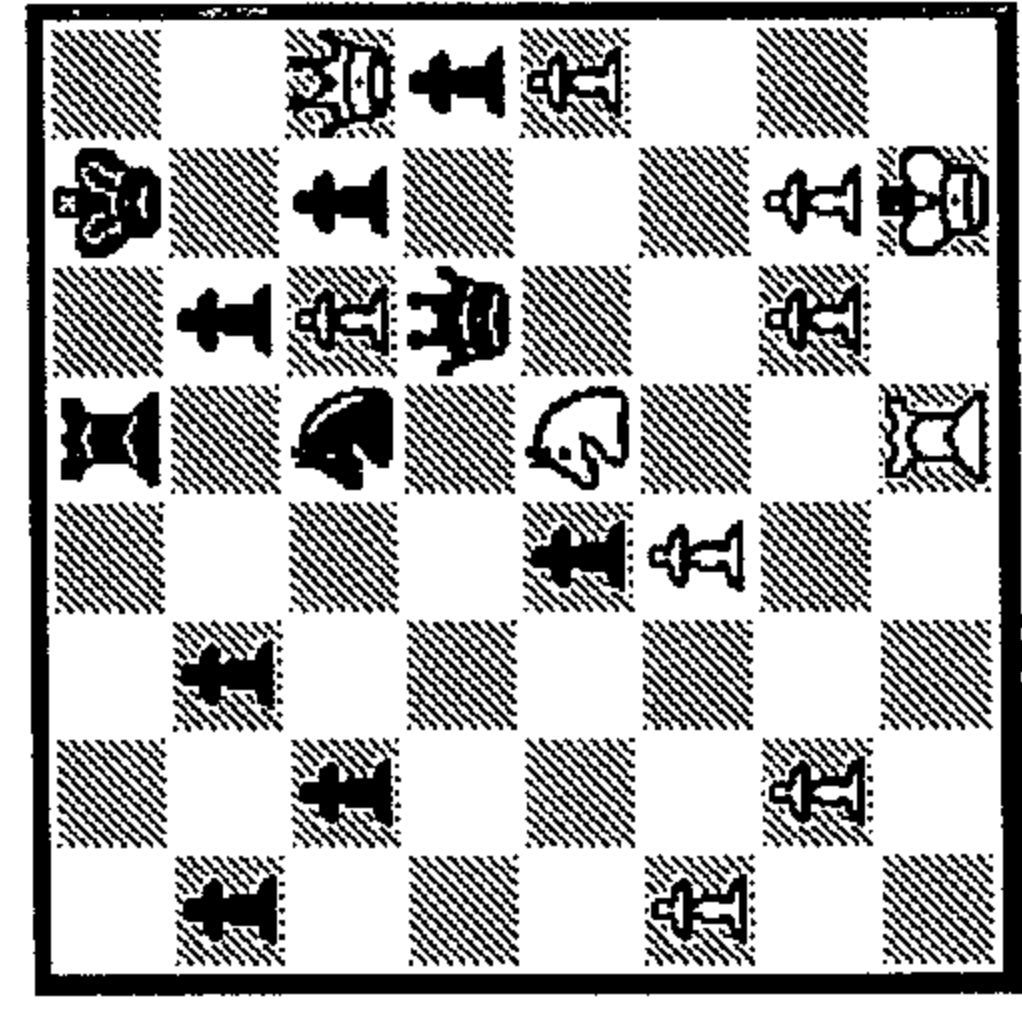
1_ 2_ 3_



336

1...?

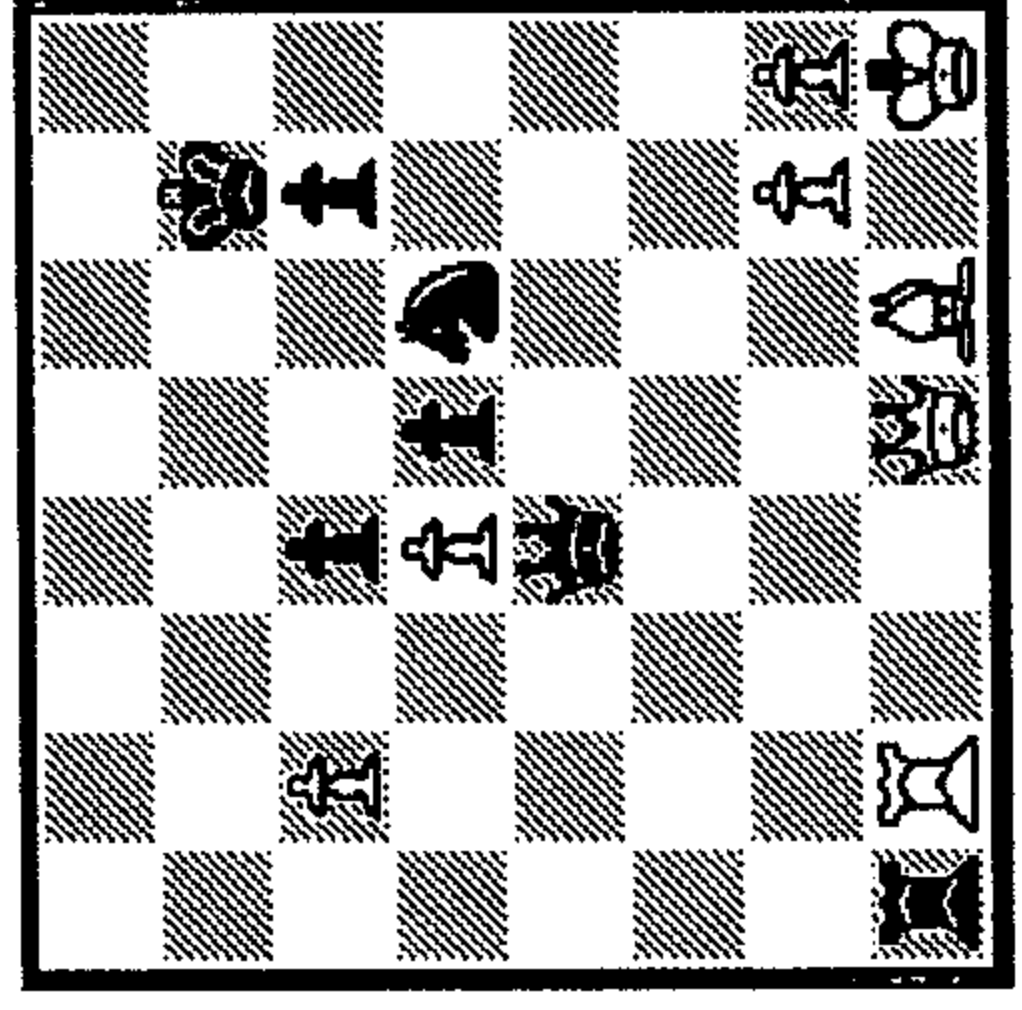
1_ 2_ 3_



337

1.?

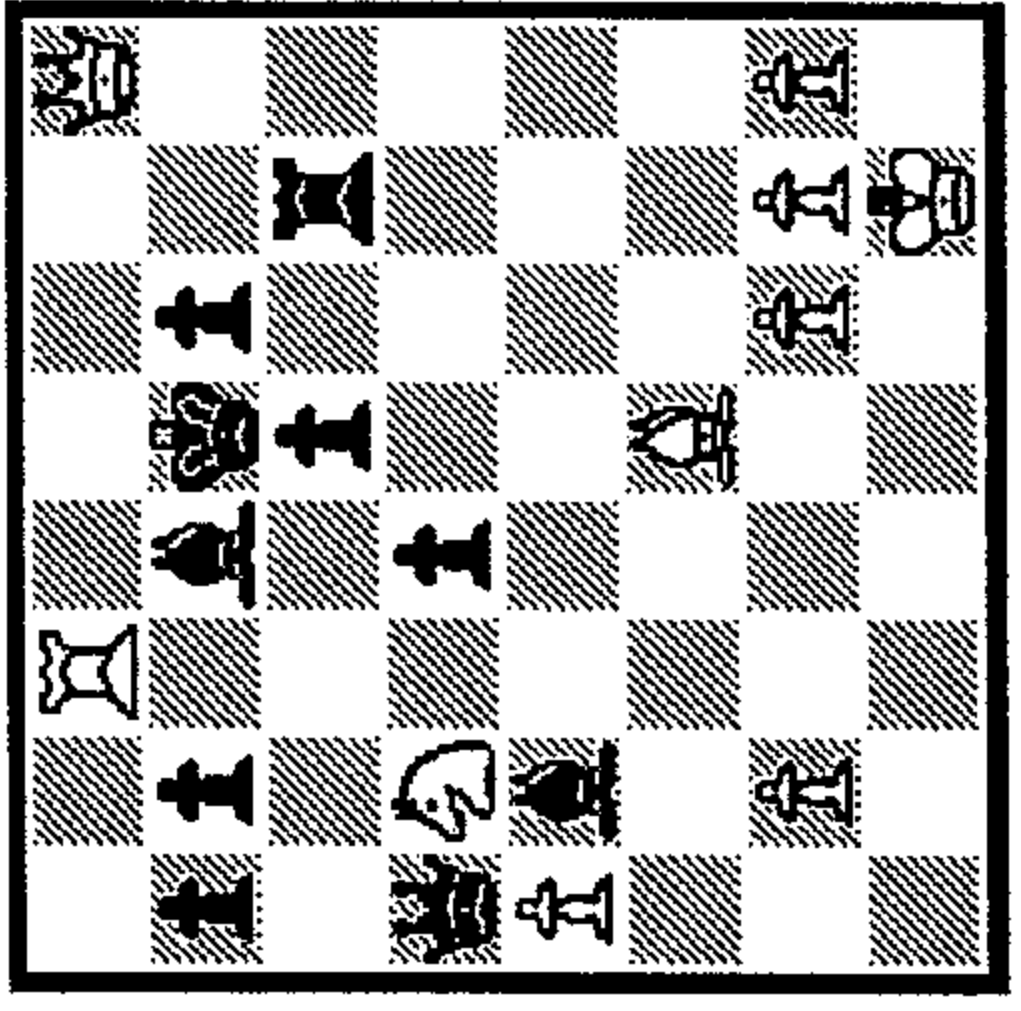
1_ 2_ 3_



338

1...?

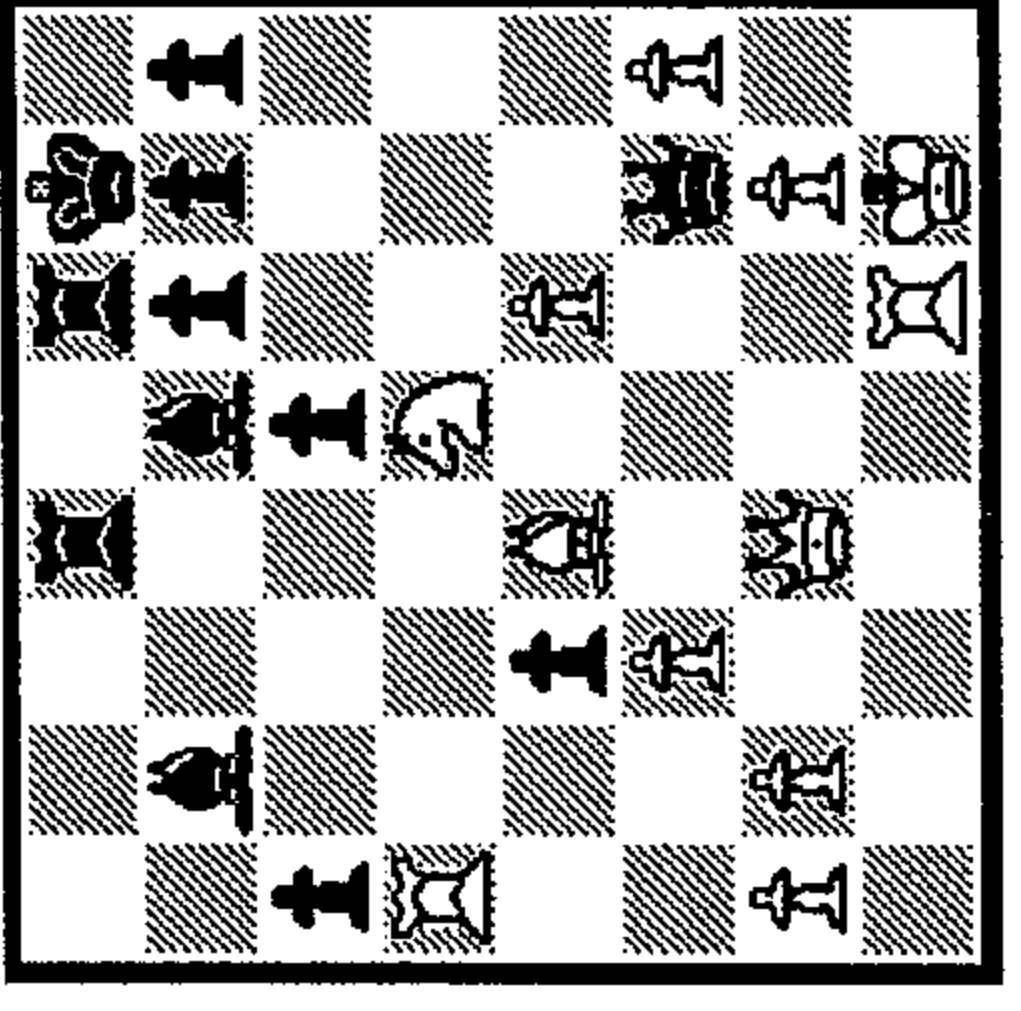
1_ 2_ 3_



341

1.?

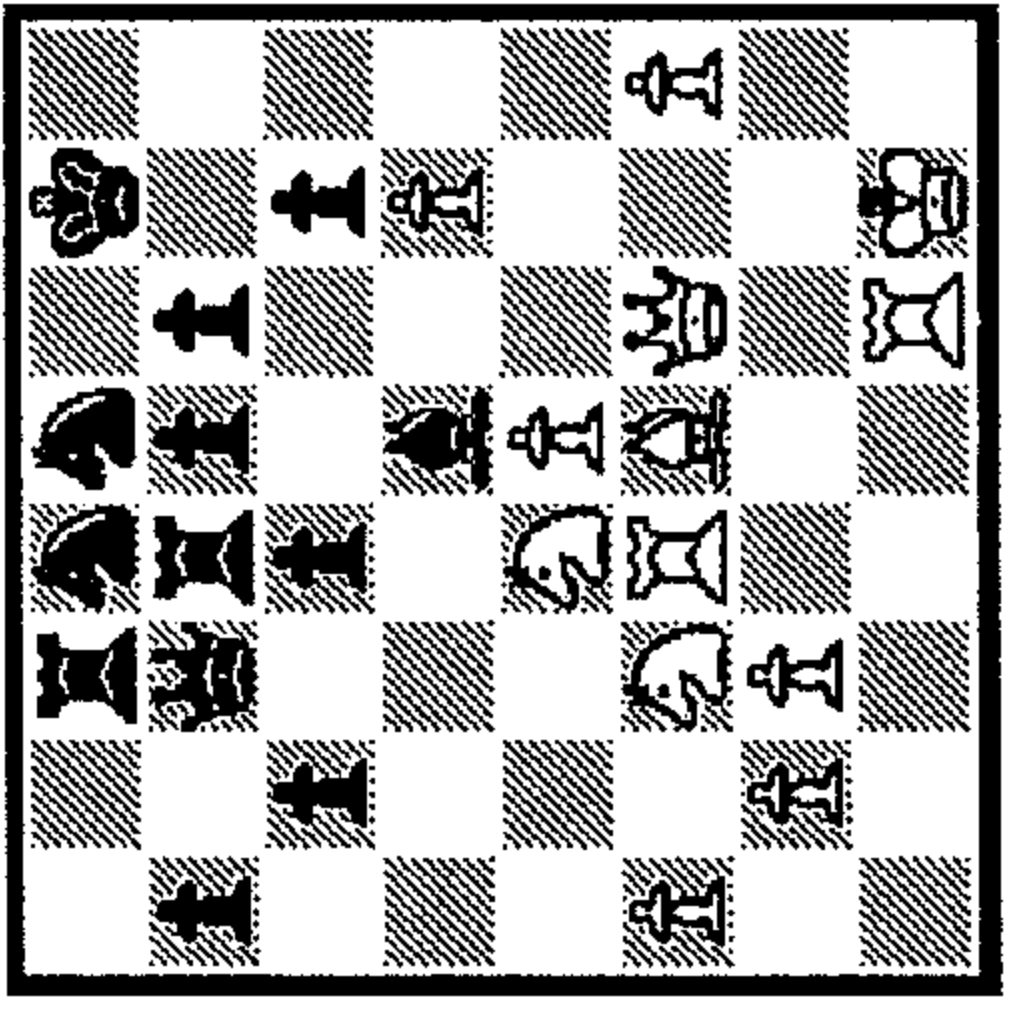
1_ 2_ 3_



342

1...?

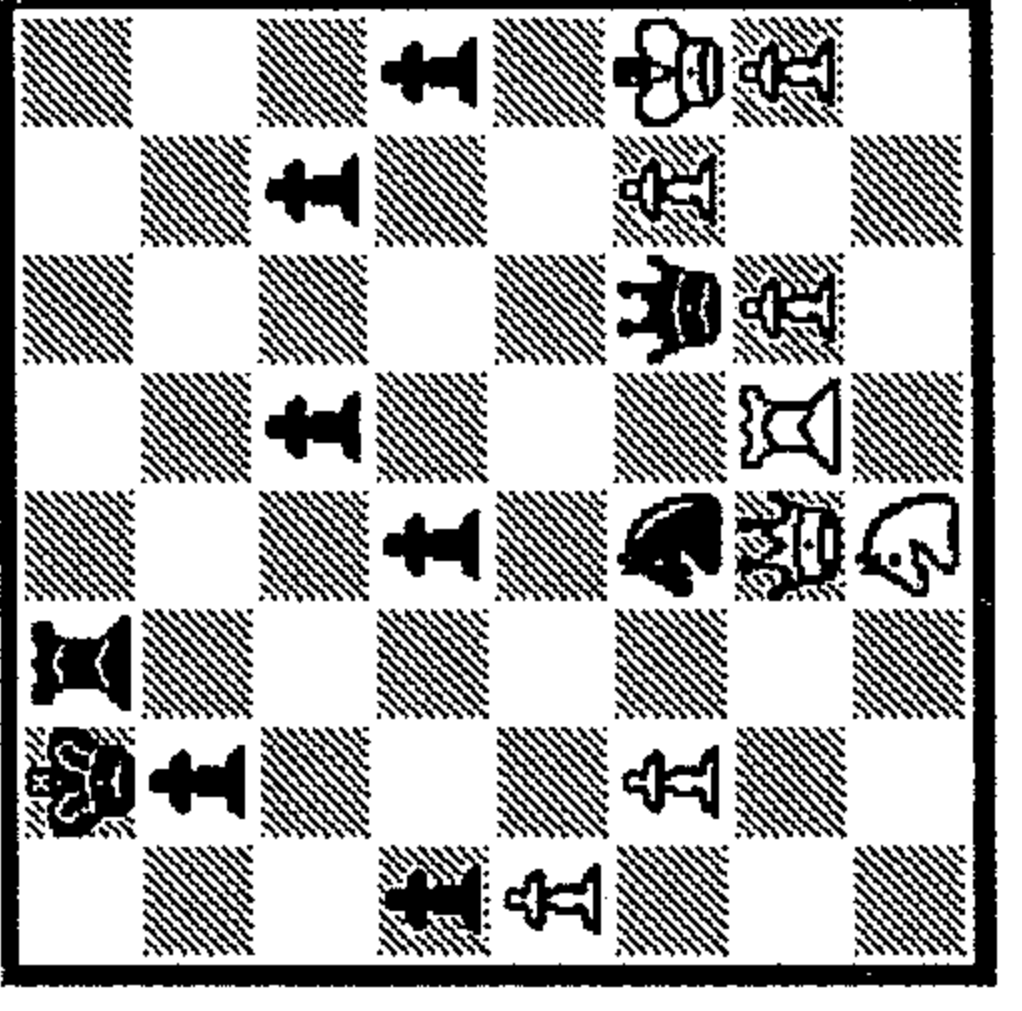
1_ 2_ 3_



343

1.?

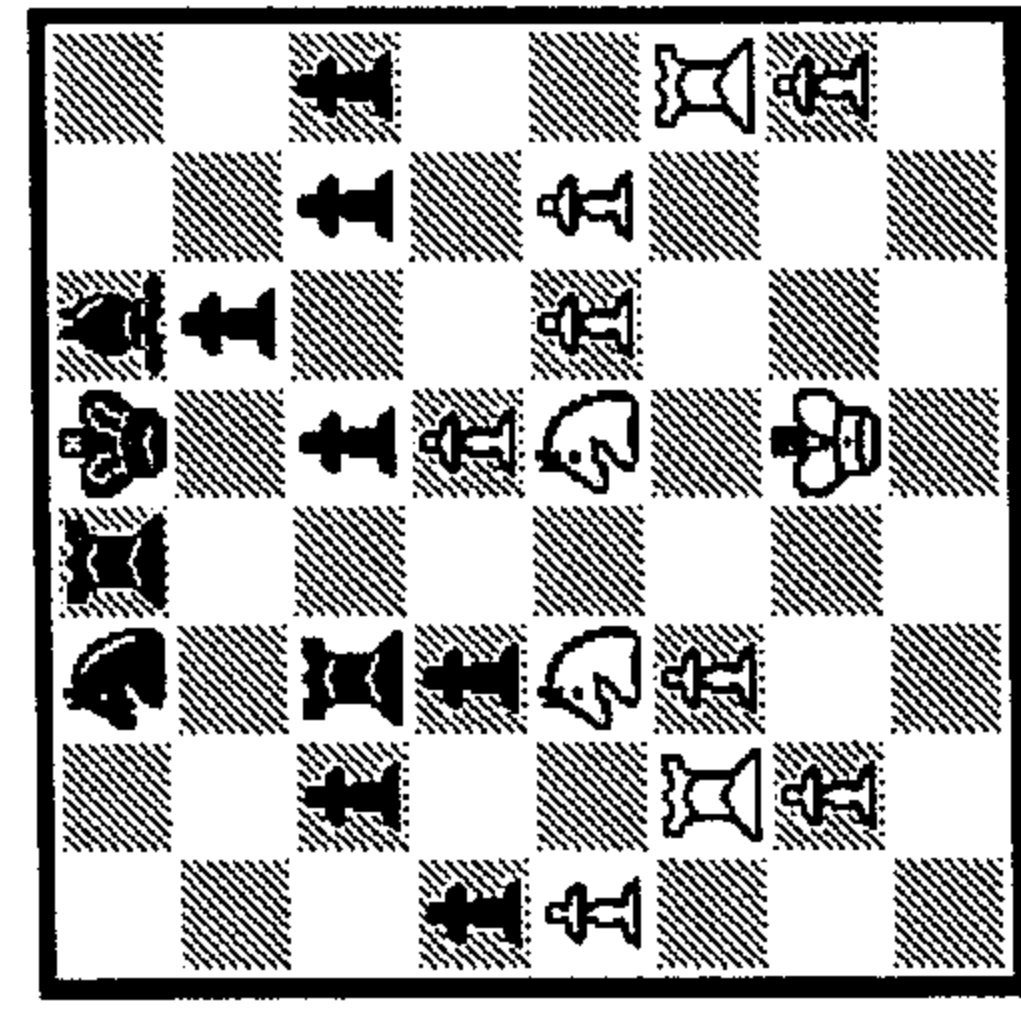
1_ 2_ 3_



344

1...?

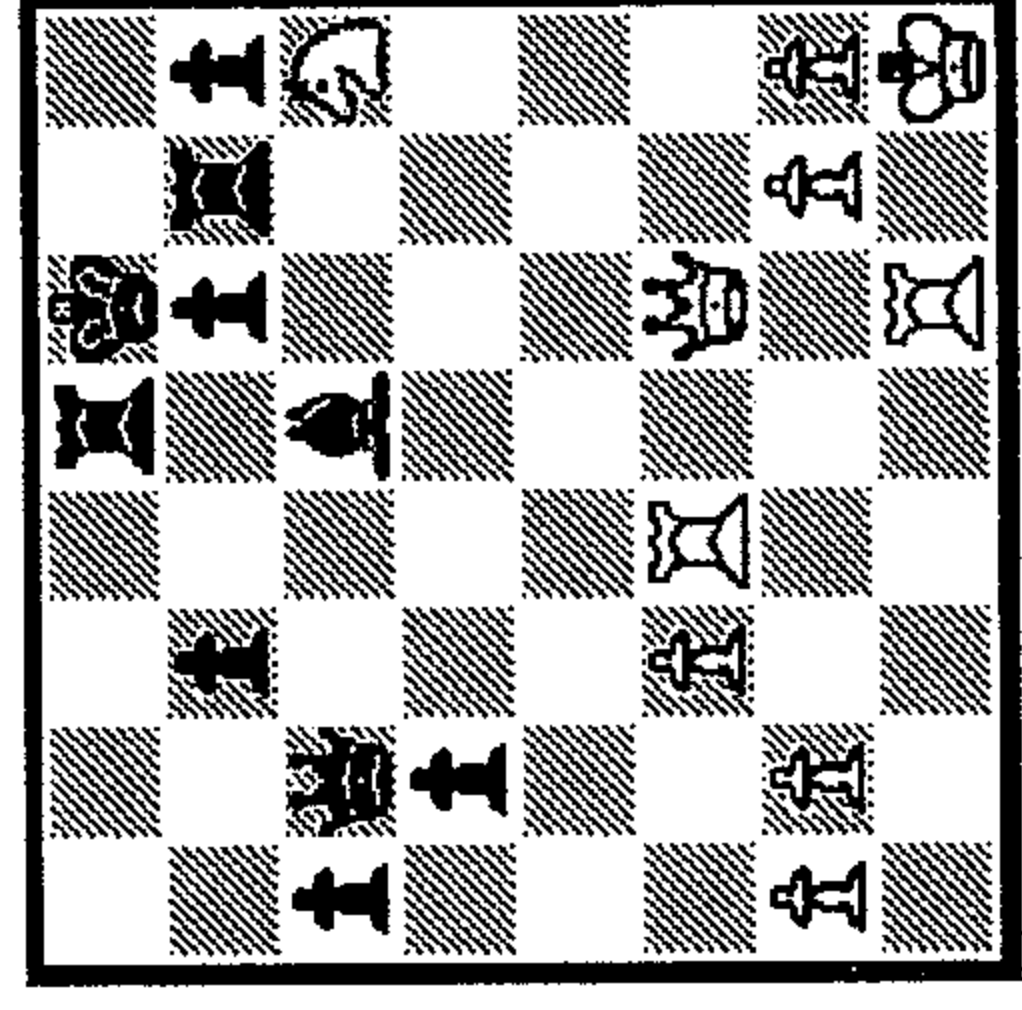
1_ 2_ 3_



339

1...?

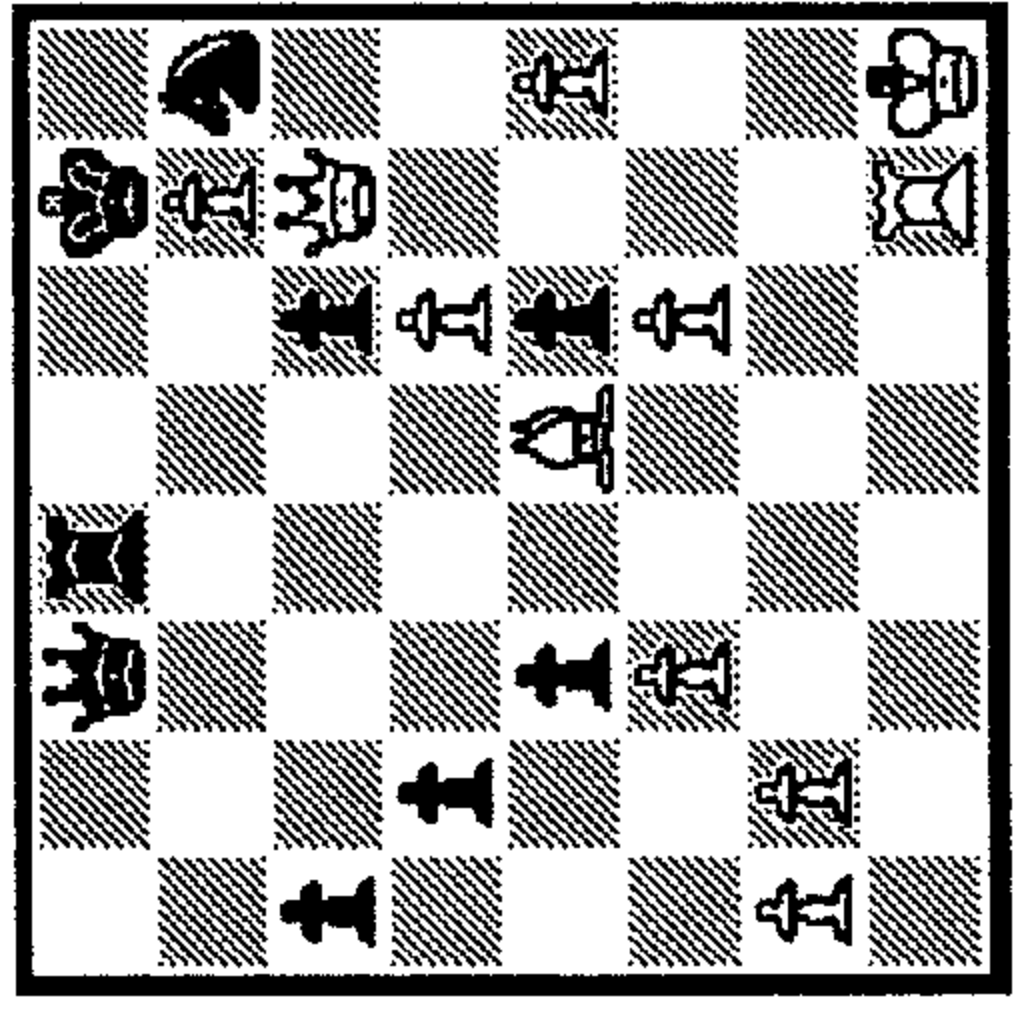
1_ 2_ 3_



340

1.?

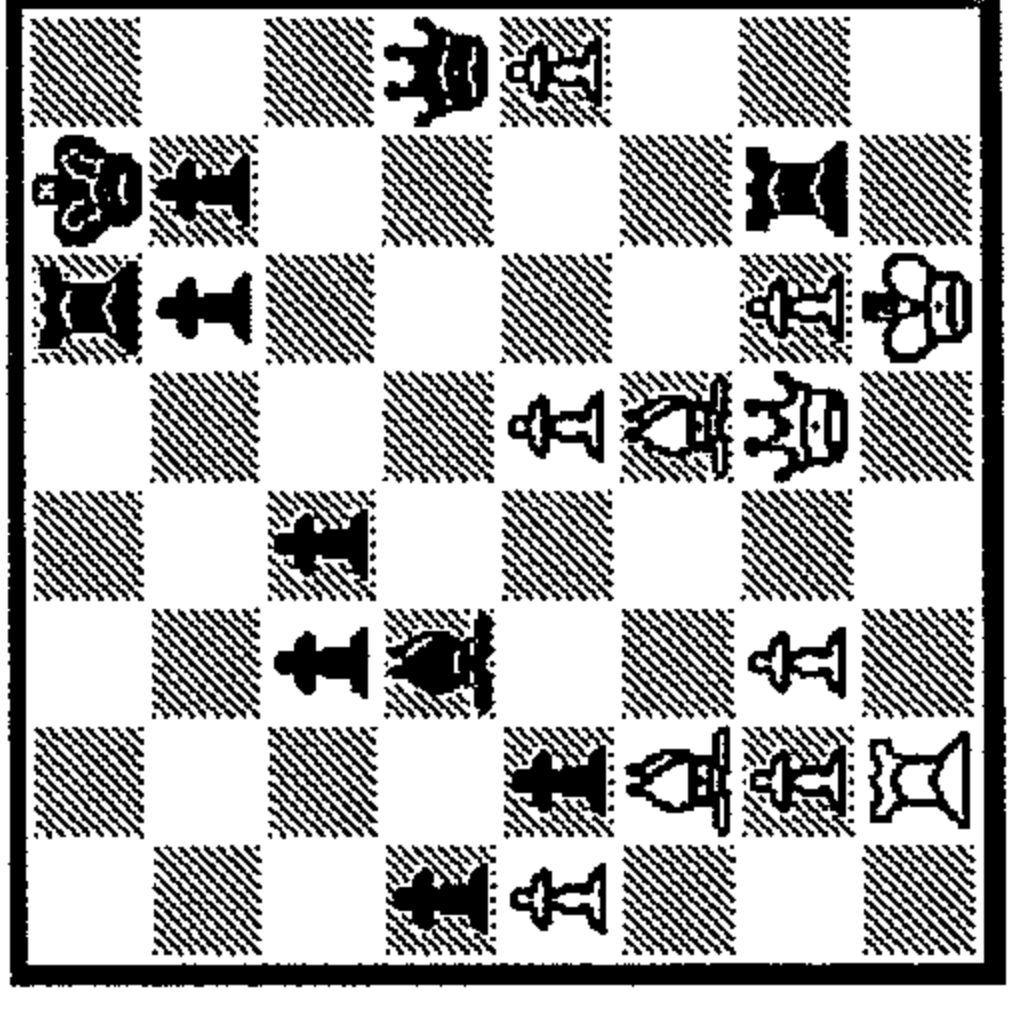
1_ 2_ 3_



345

1.?

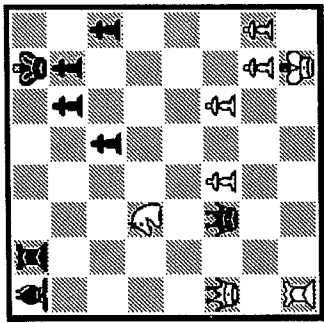
1_ 2_ 3_



346

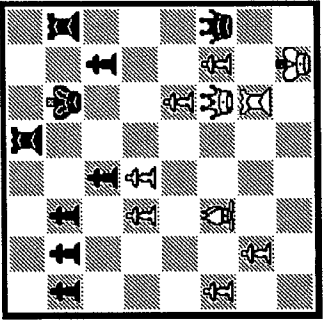
1...?

1_ 2_ 3_



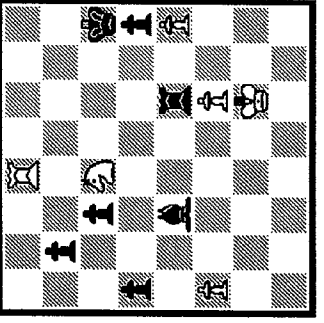
359 1...?

- 1_
- 2_
- 3_



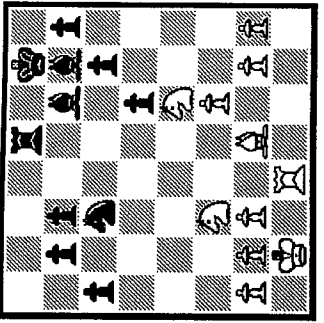
360 1...?

- 1_
- 2_
- 3_



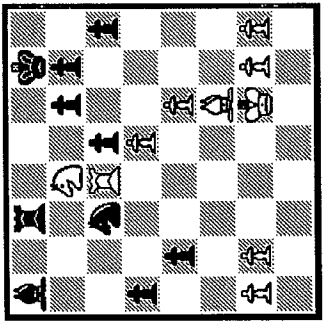
365 1.?

- 1_
- 2_
- 3_



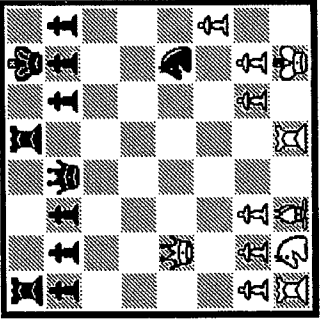
366 1...?

- 1_
- 2_
- 3_



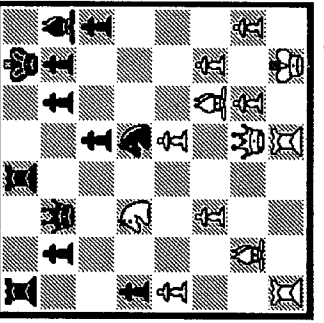
361 1.?

- 1_
- 2_
- 3_



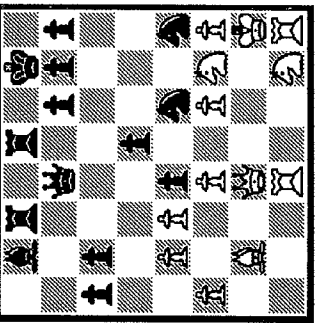
362 1...?

- 1_
- 2_
- 3_



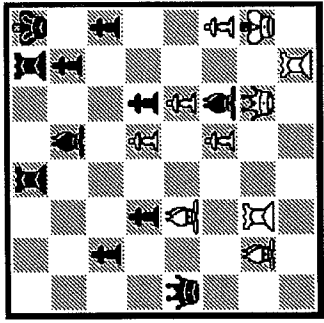
367 1...?

- 1_
- 2_
- 3_



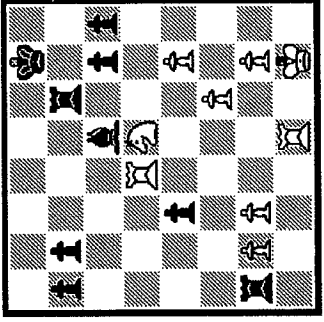
368 1...?

- 1_
- 2_
- 3_



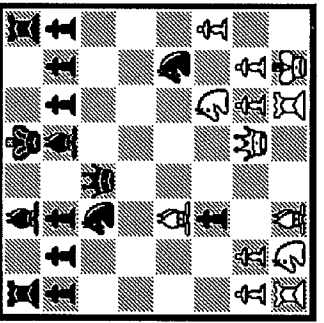
363 1...?

- 1_
- 2_
- 3_



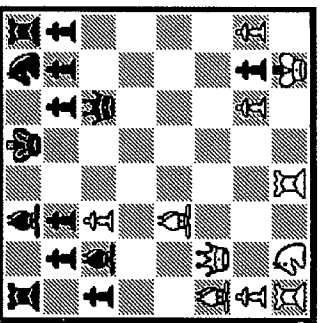
364 1.?

- 1_
- 2_
- 3_



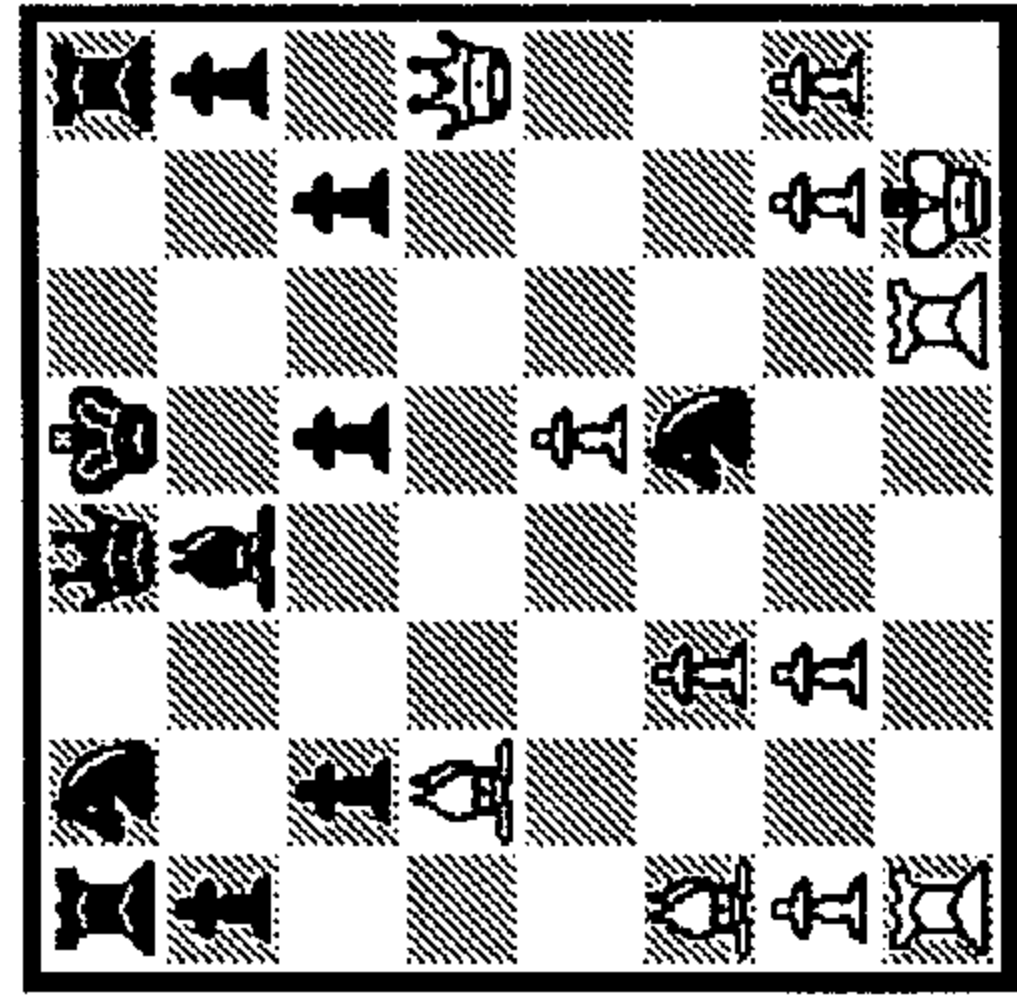
369 1...?

- 1_
- 2_
- 3_



370 1.?

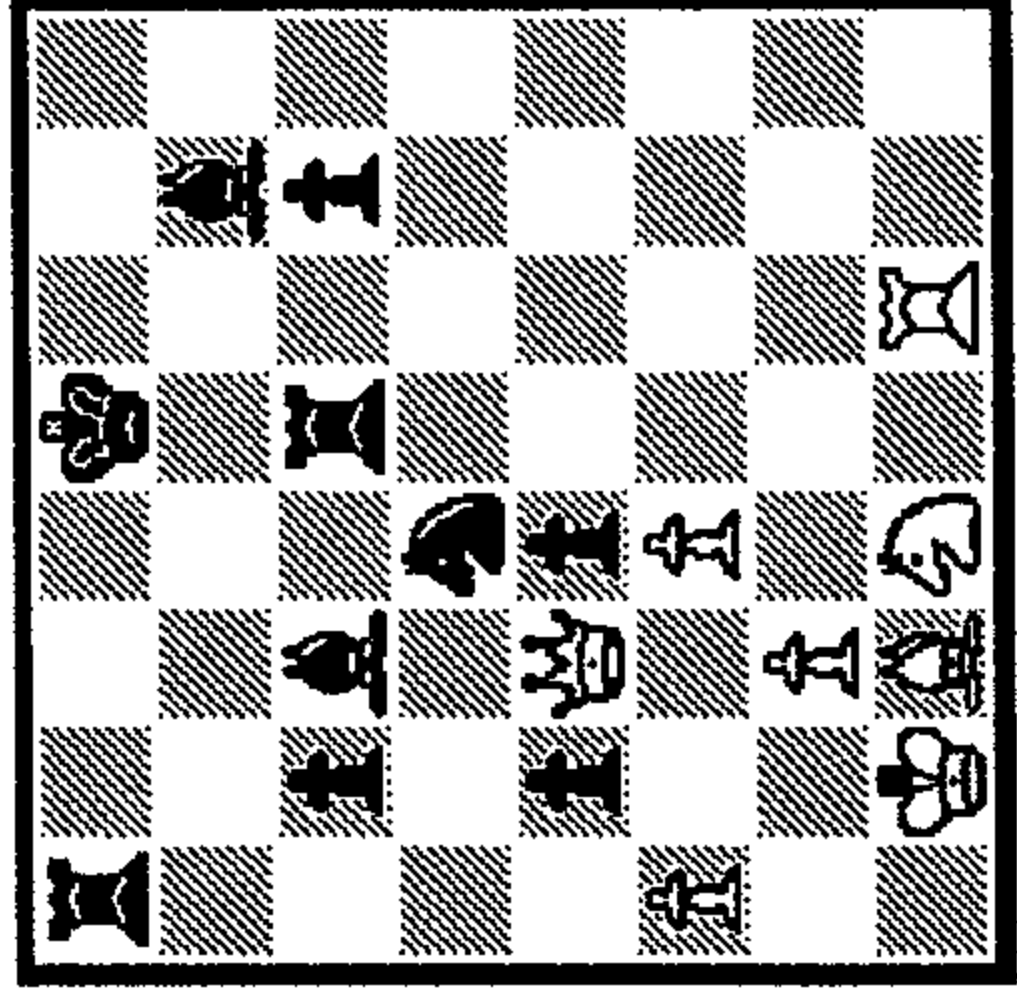
- 1_
- 2_
- 3_



371

1.?

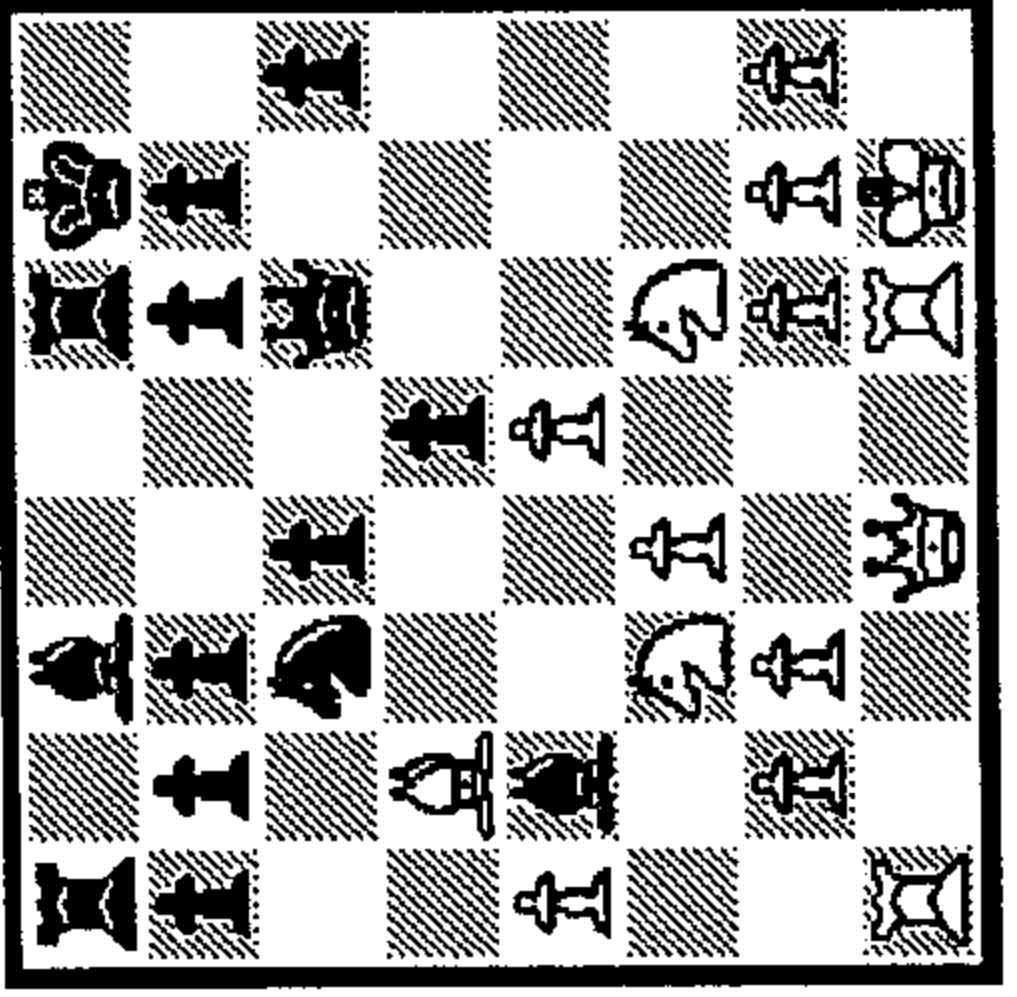
1_ 2_ 3_



372

1.?

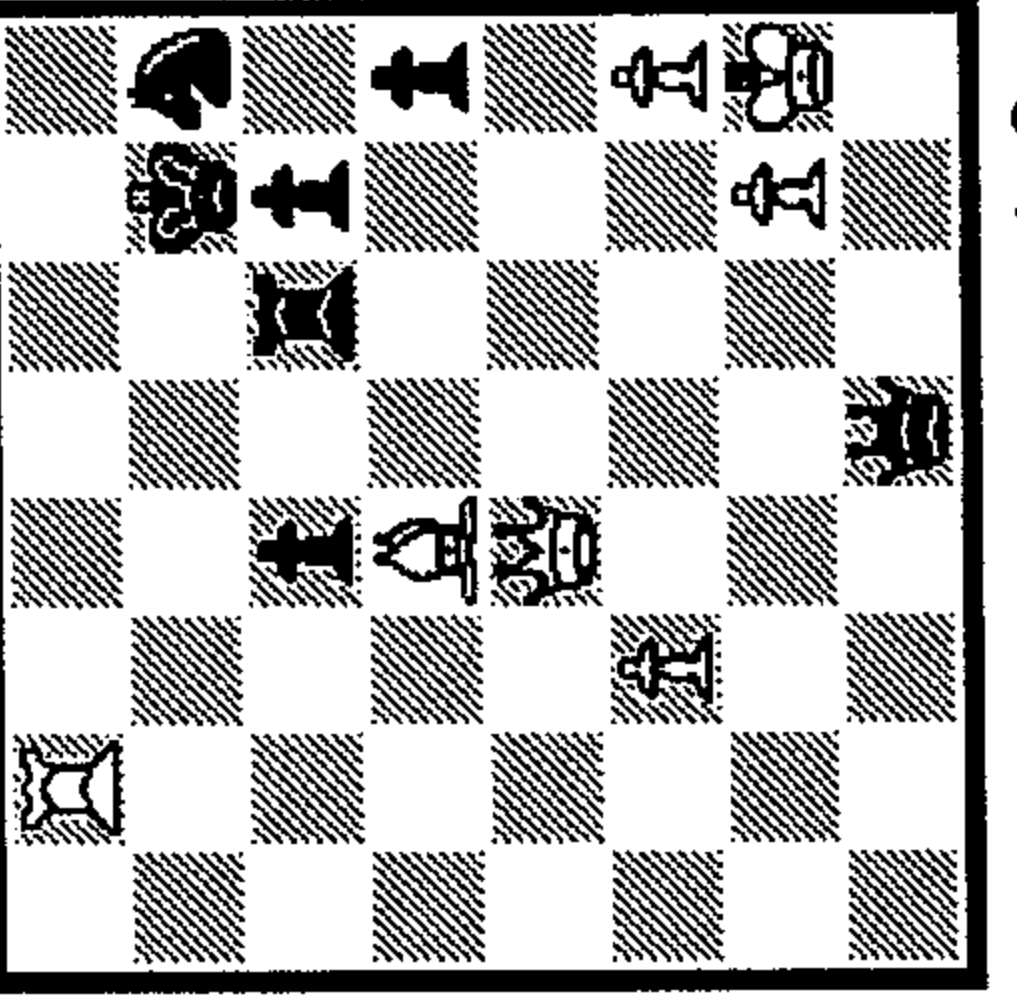
1_ 2_ 3_



377

1.?

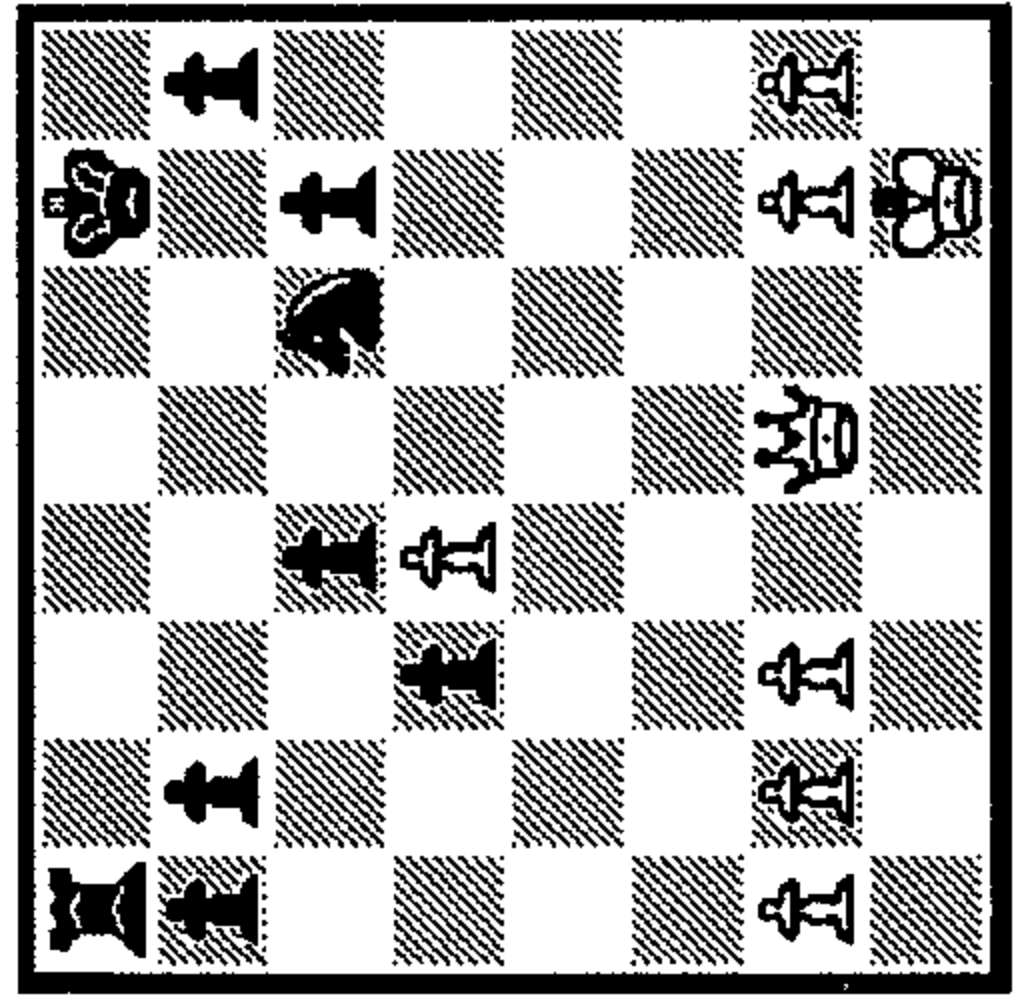
1_ 2_ 3_



378

1.?

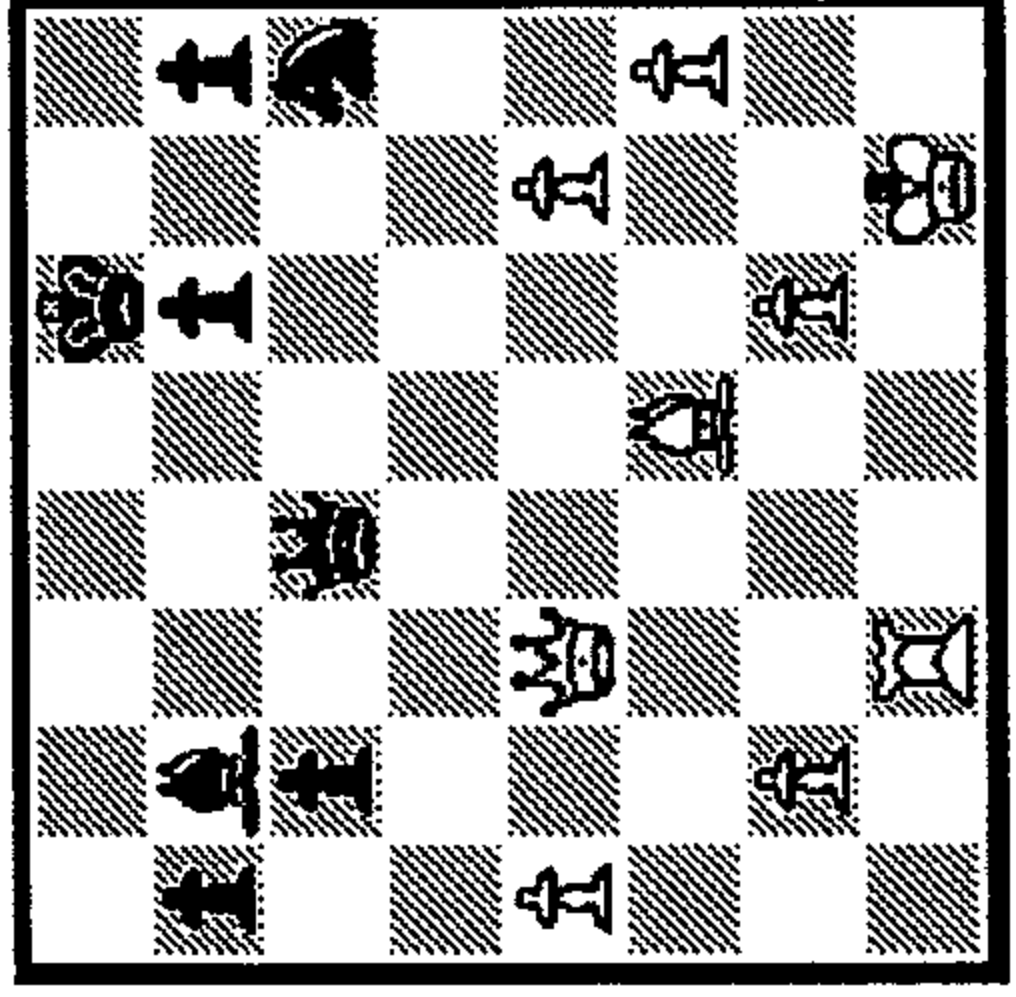
1_ 2_ 3_



373

1.?

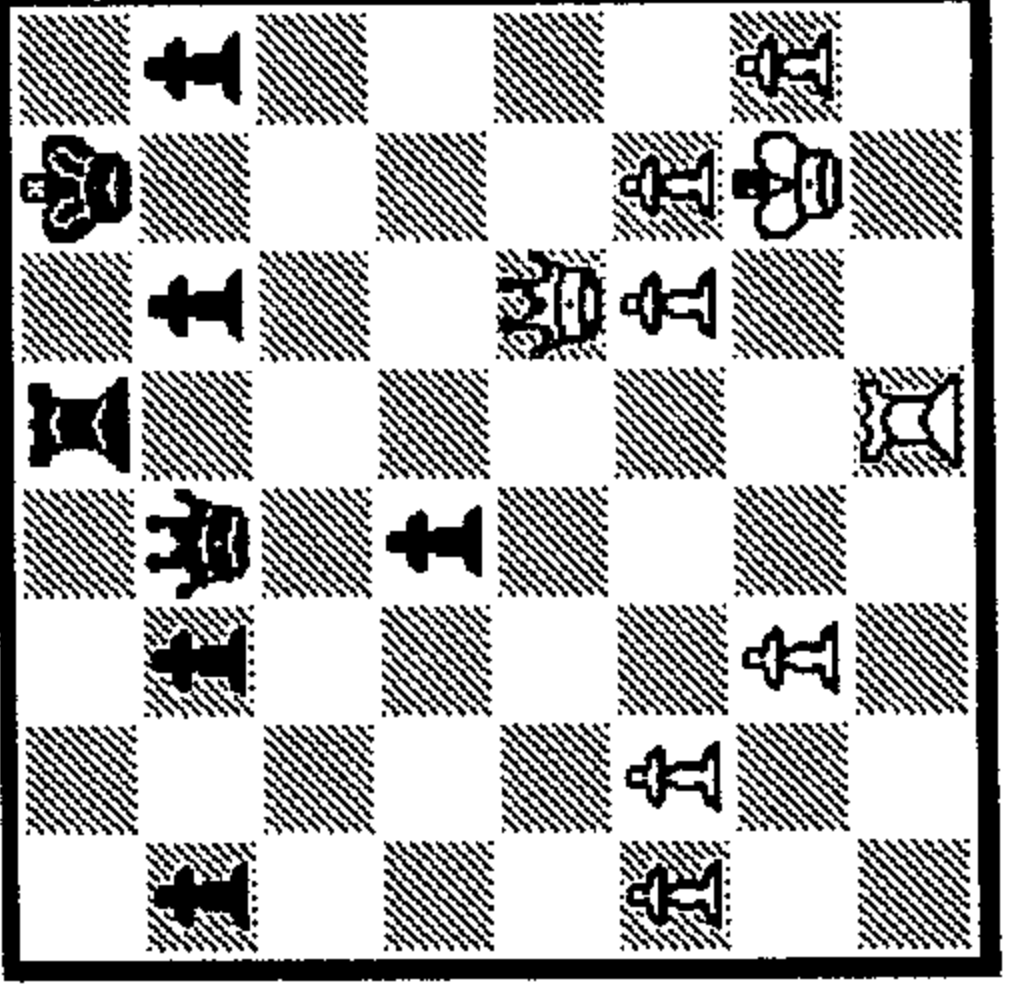
1_ 2_ 3_



374

1.?

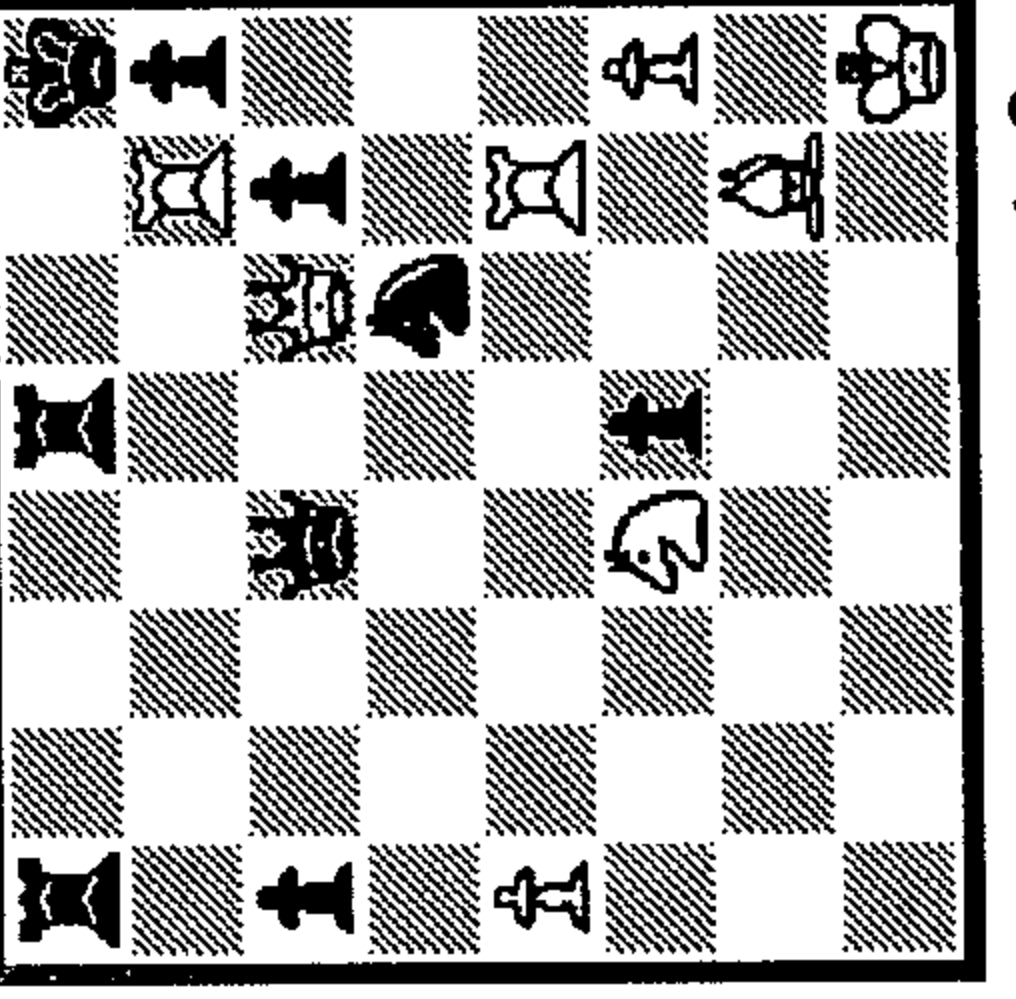
1_ 2_ 3_



379

1.?

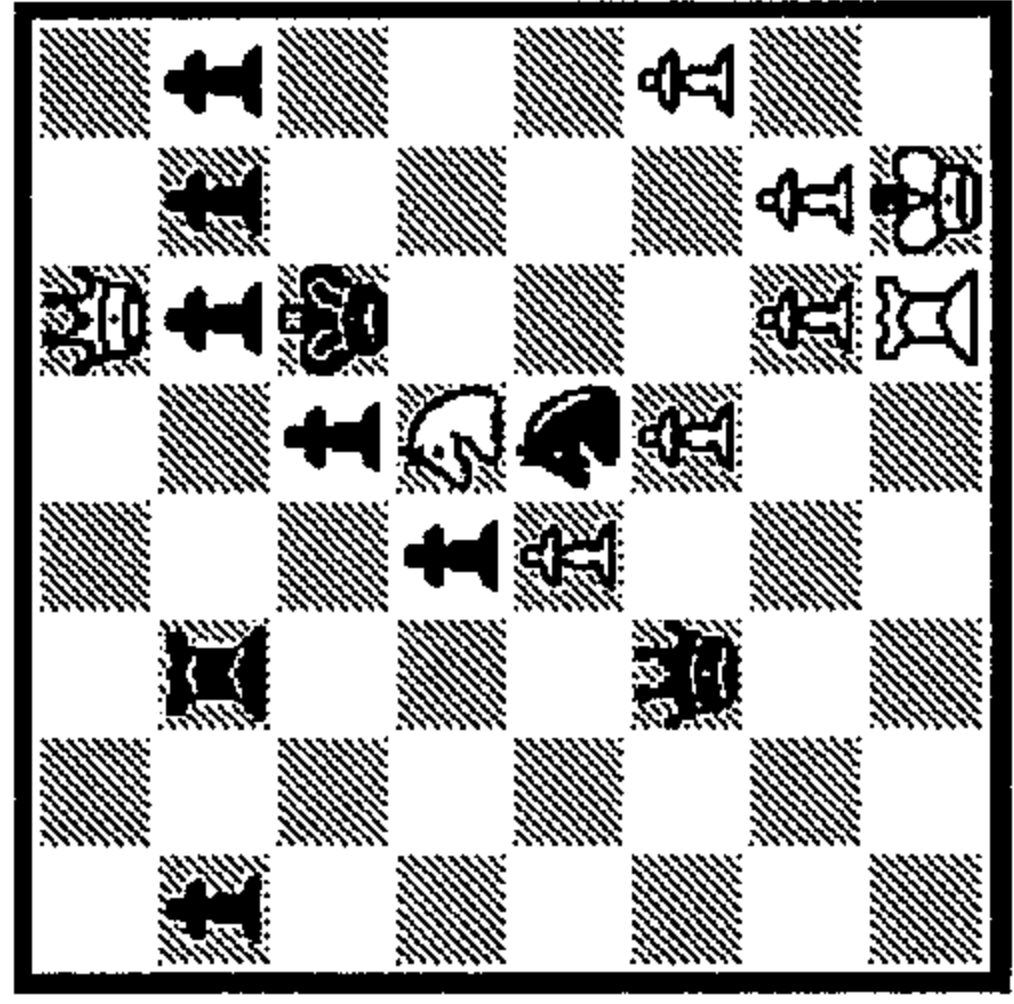
1_ 2_ 3_



380

1.?

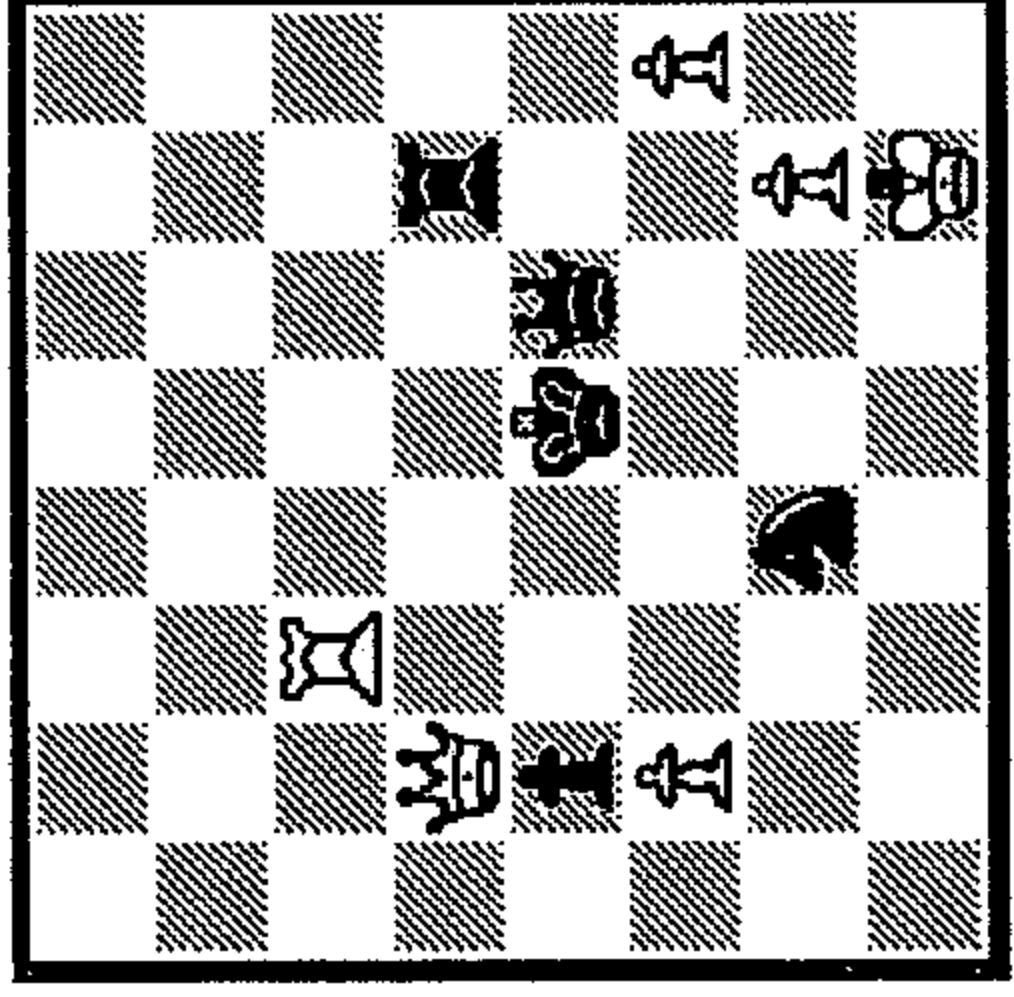
1_ 2_ 3_



375

1.?

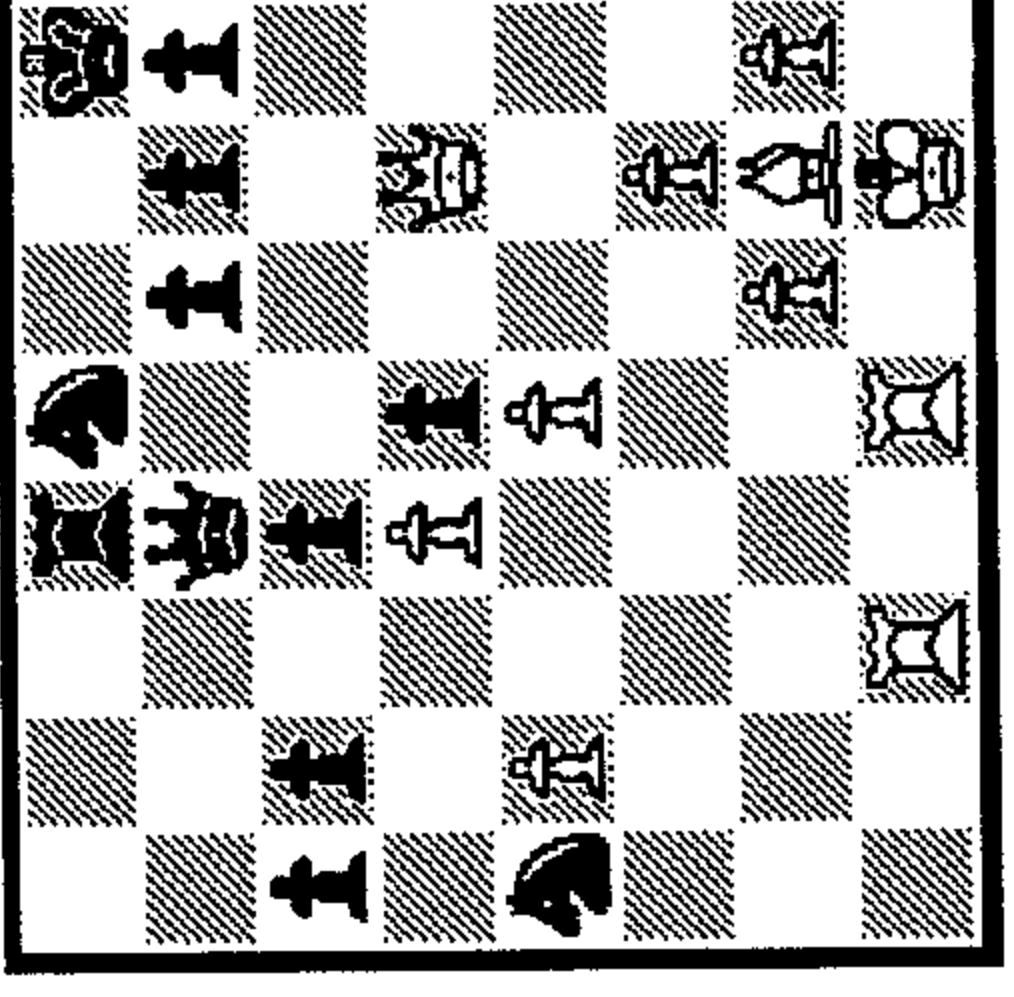
1_ 2_ 3_



376

1.?

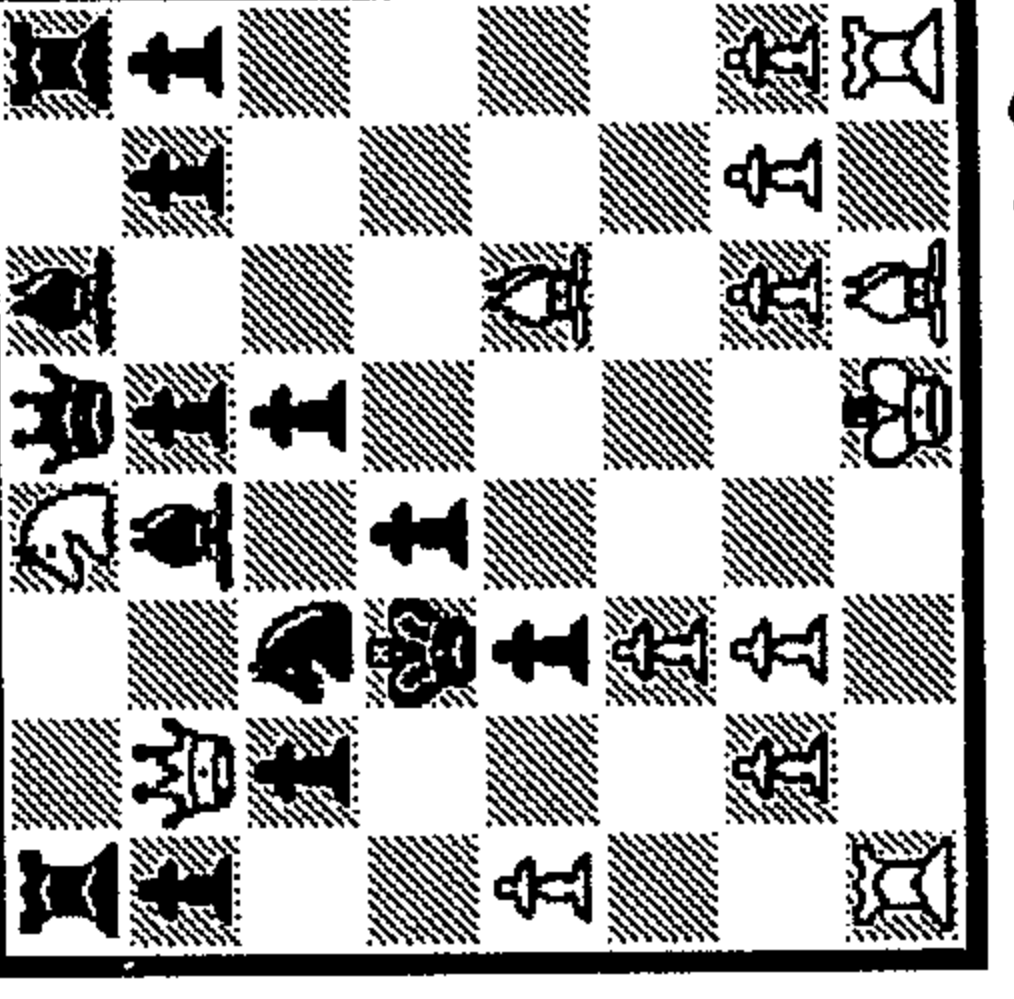
1_ 2_ 3_



381

1.?

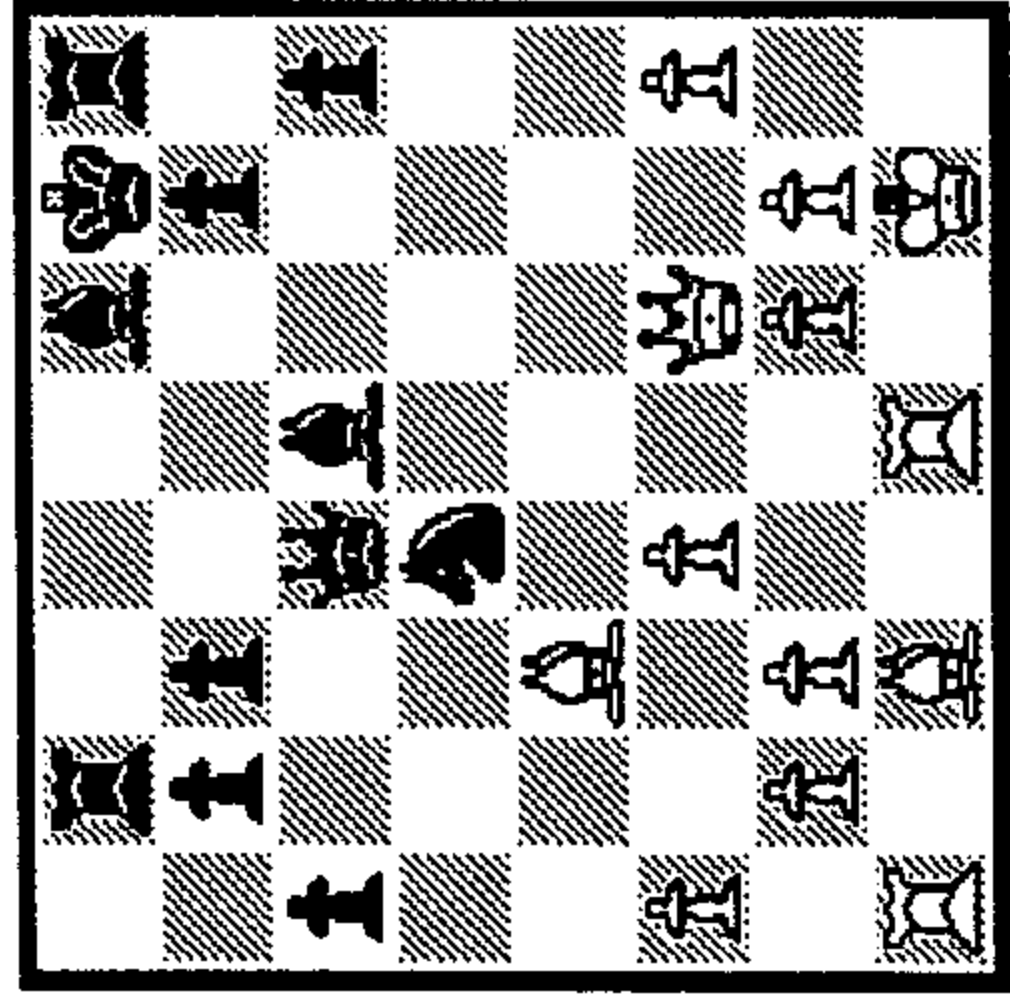
1_ 2_ 3_



382

1.?

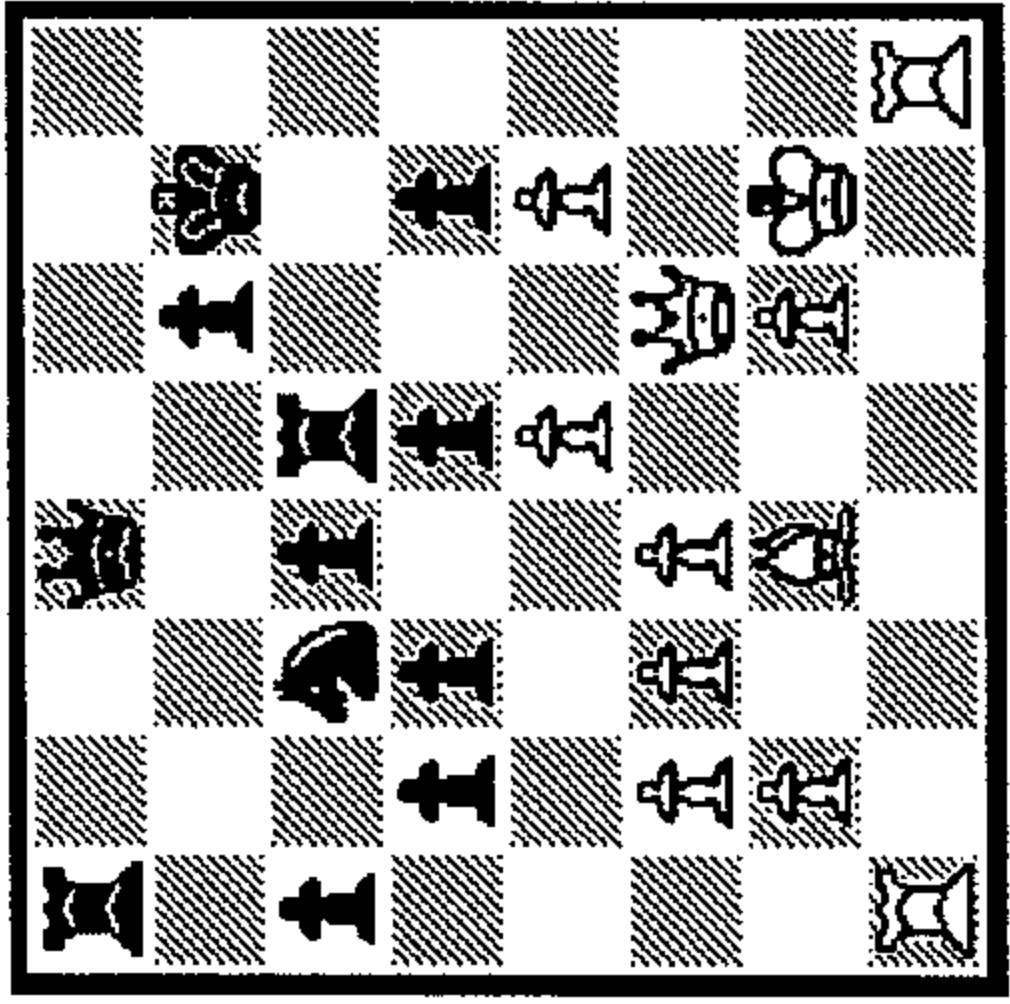
1_ 2_ 3_



383

1.?

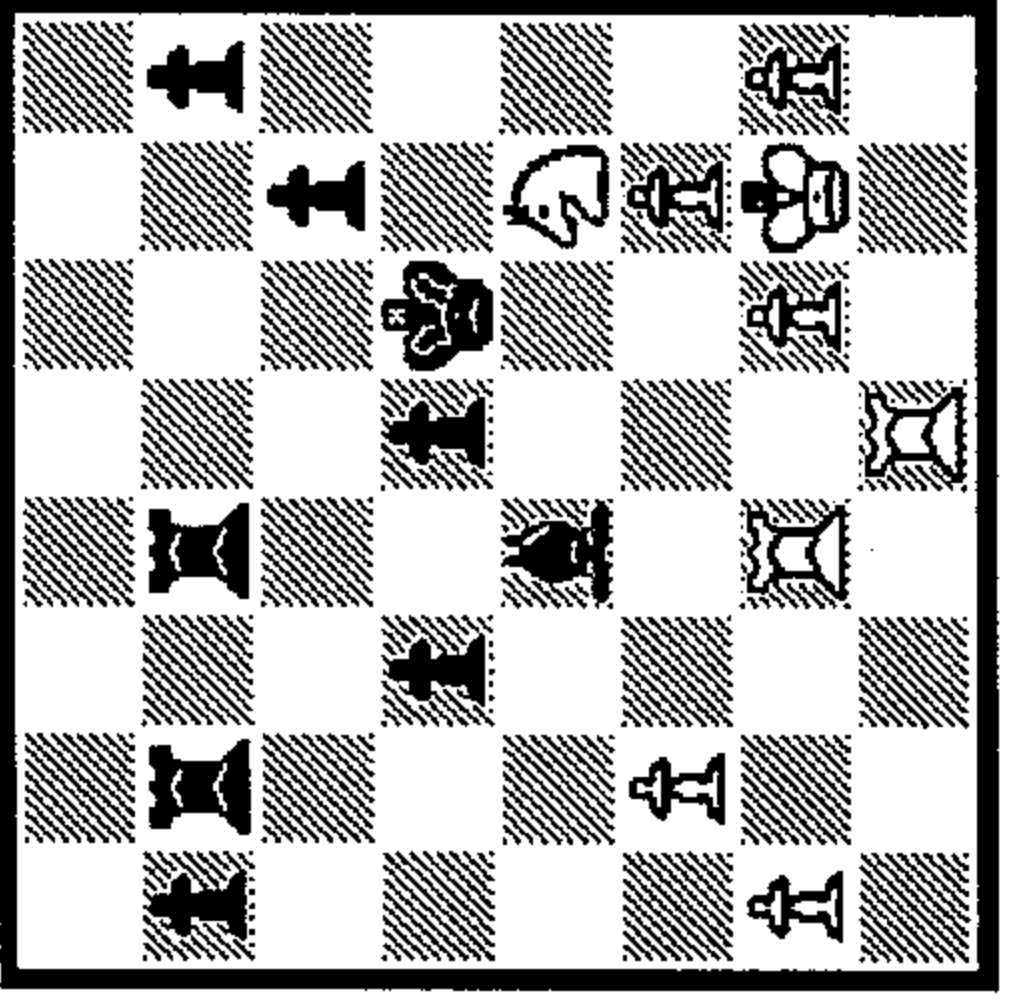
- 1_
- 2_
- 3_



384

1.?

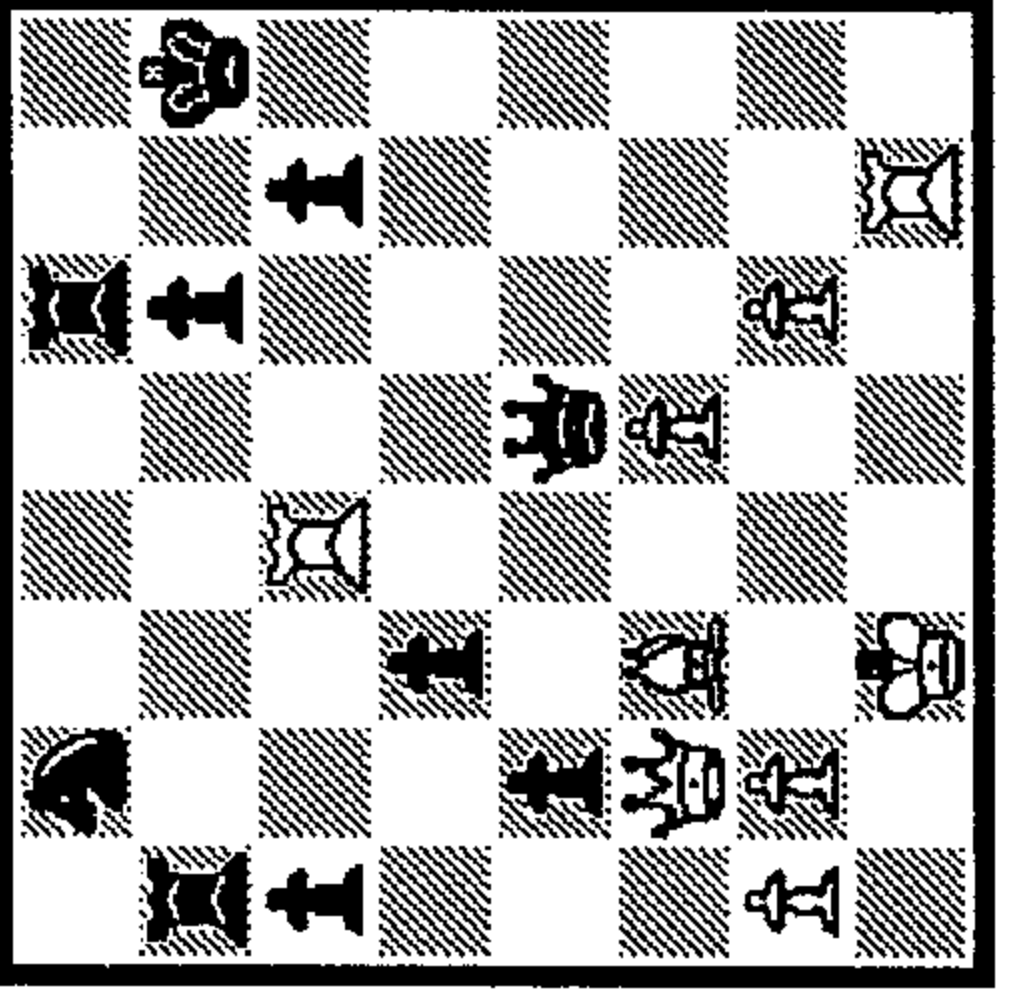
- 1_
- 2_
- 3_



389

1.?

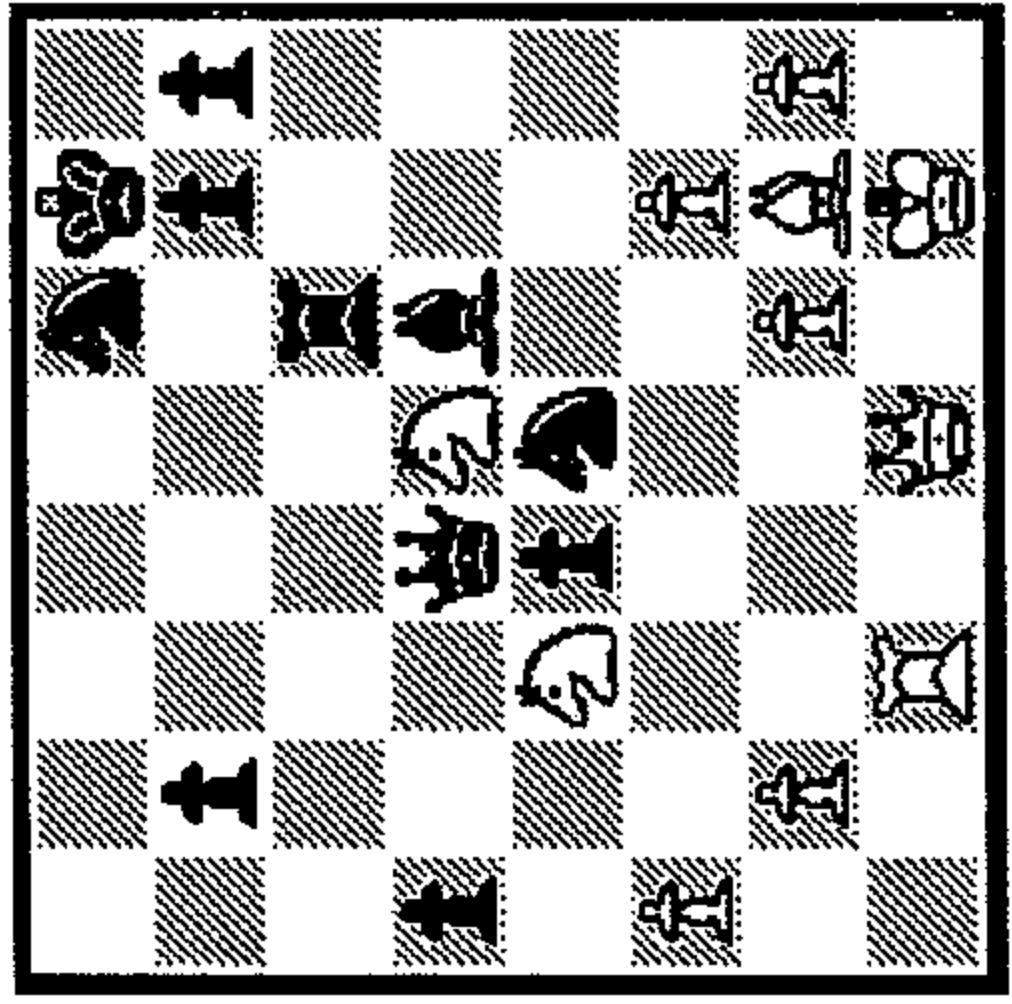
- 1_
- 2_
- 3_



390

1.?

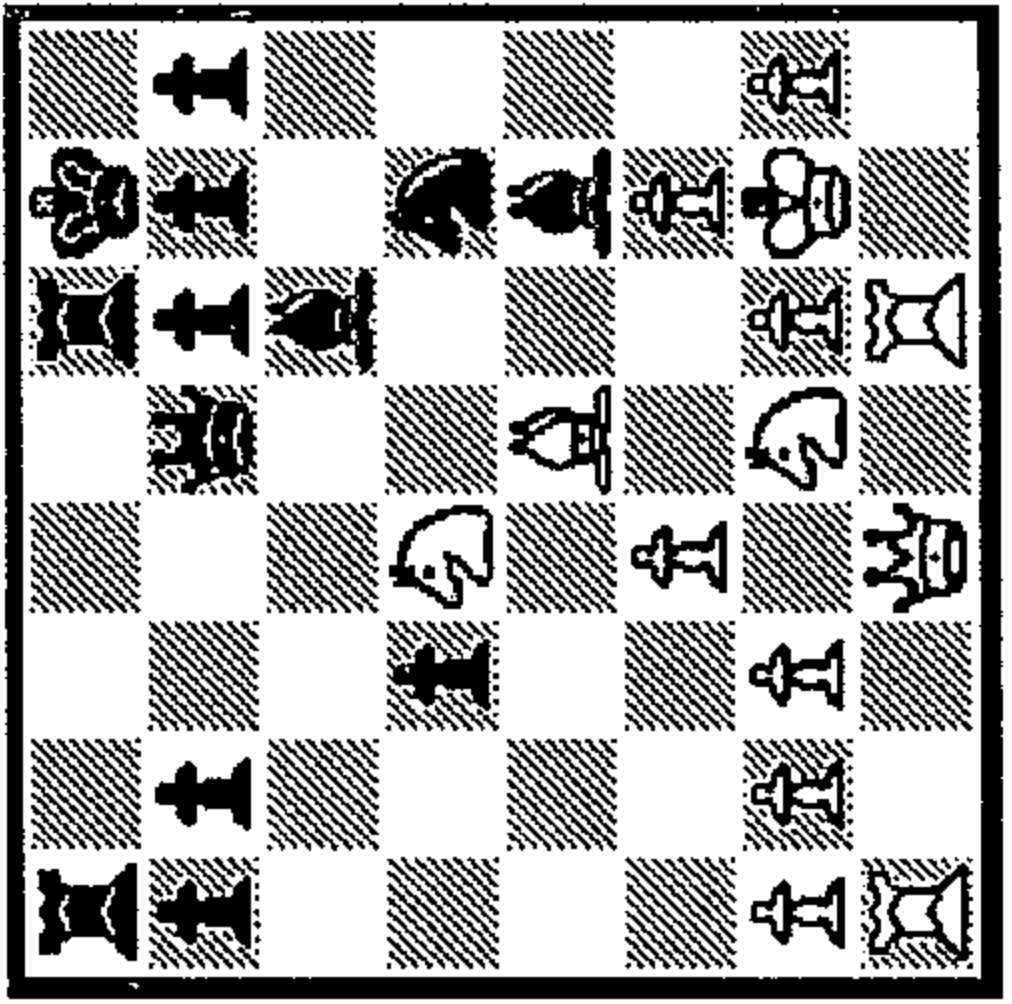
- 1_
- 2_
- 3_



385

1.?

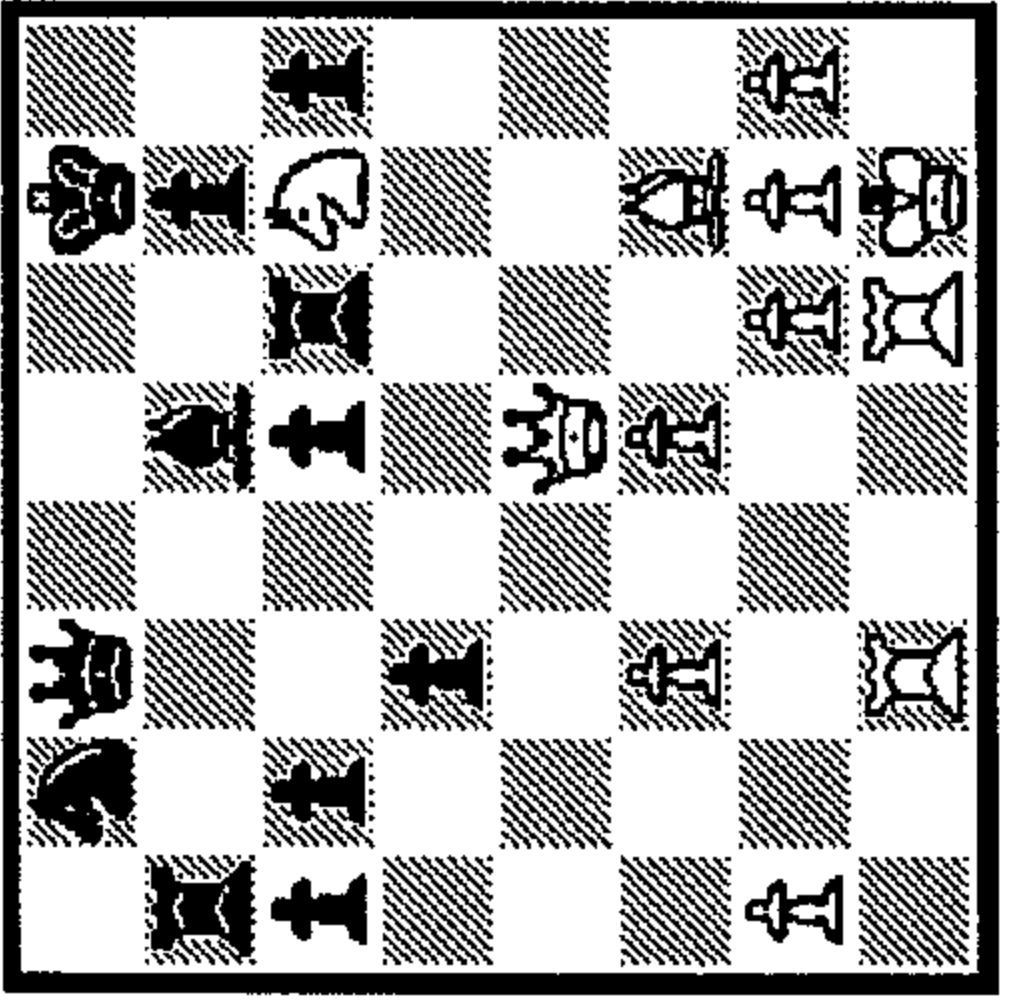
- 1_
- 2_
- 3_



386

1...?

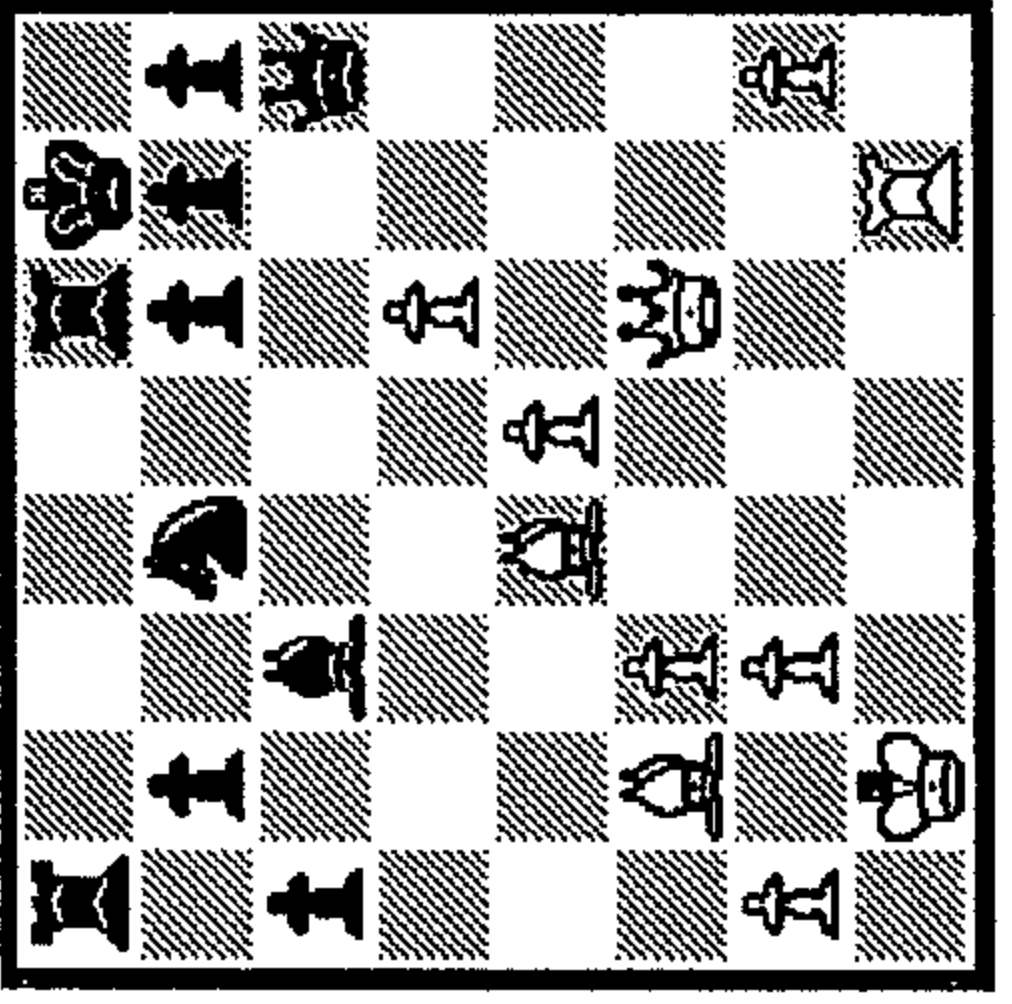
- 1_
- 2_
- 3_



391

1.?

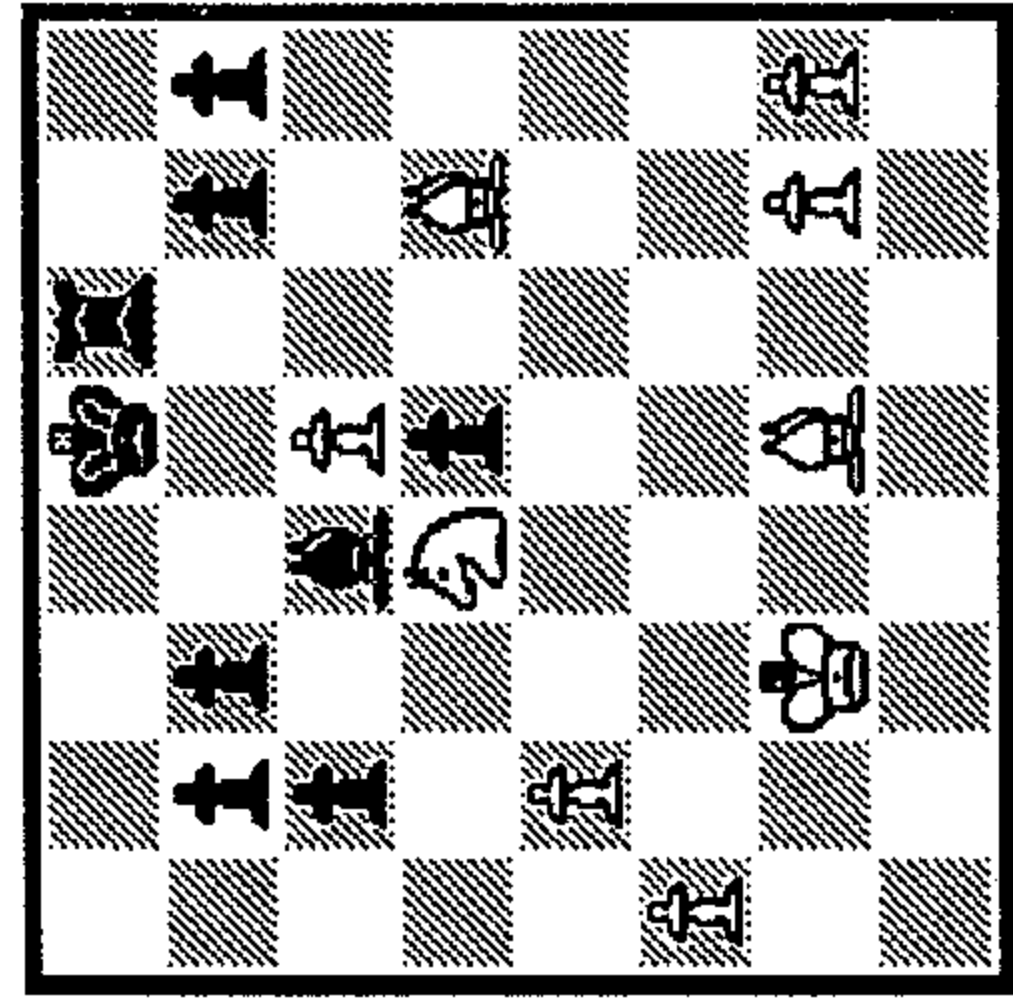
- 1_
- 2_
- 3_



392

1.?

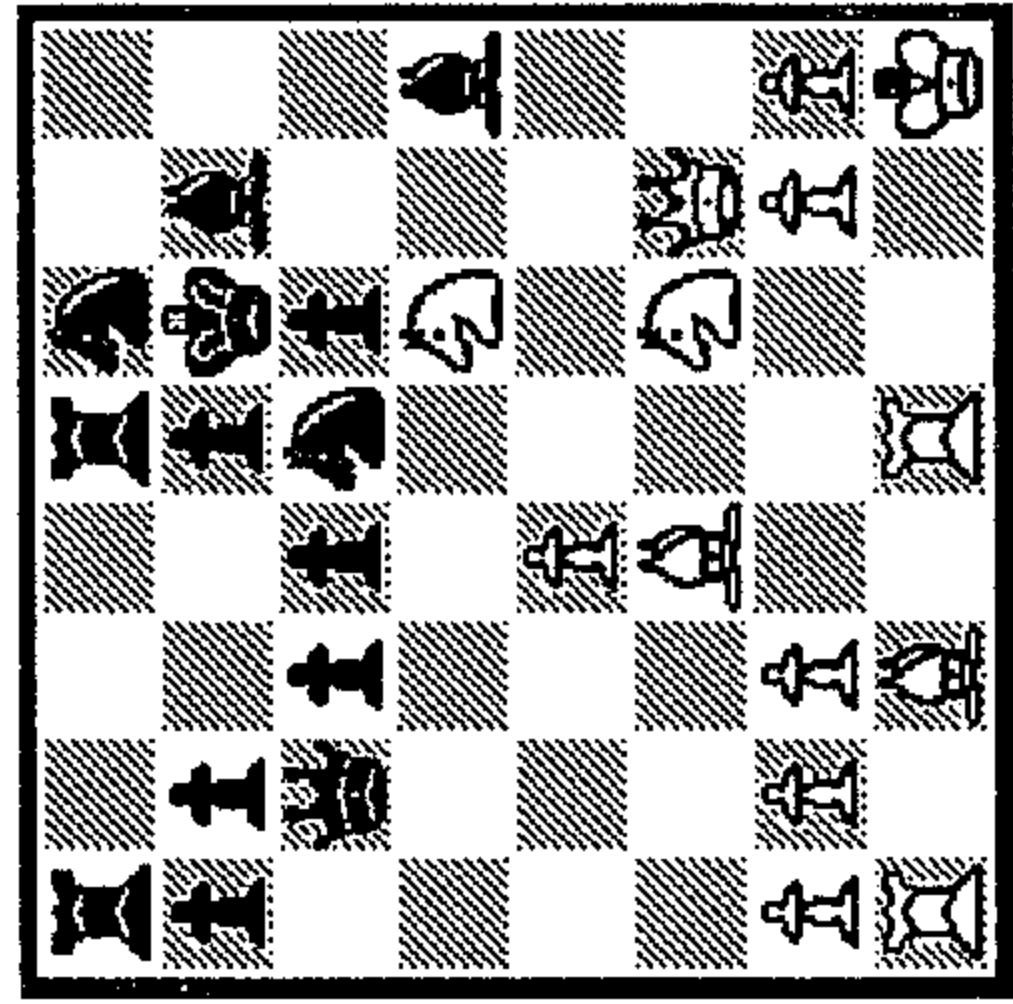
- 1_
- 2_
- 3_



387

1.?

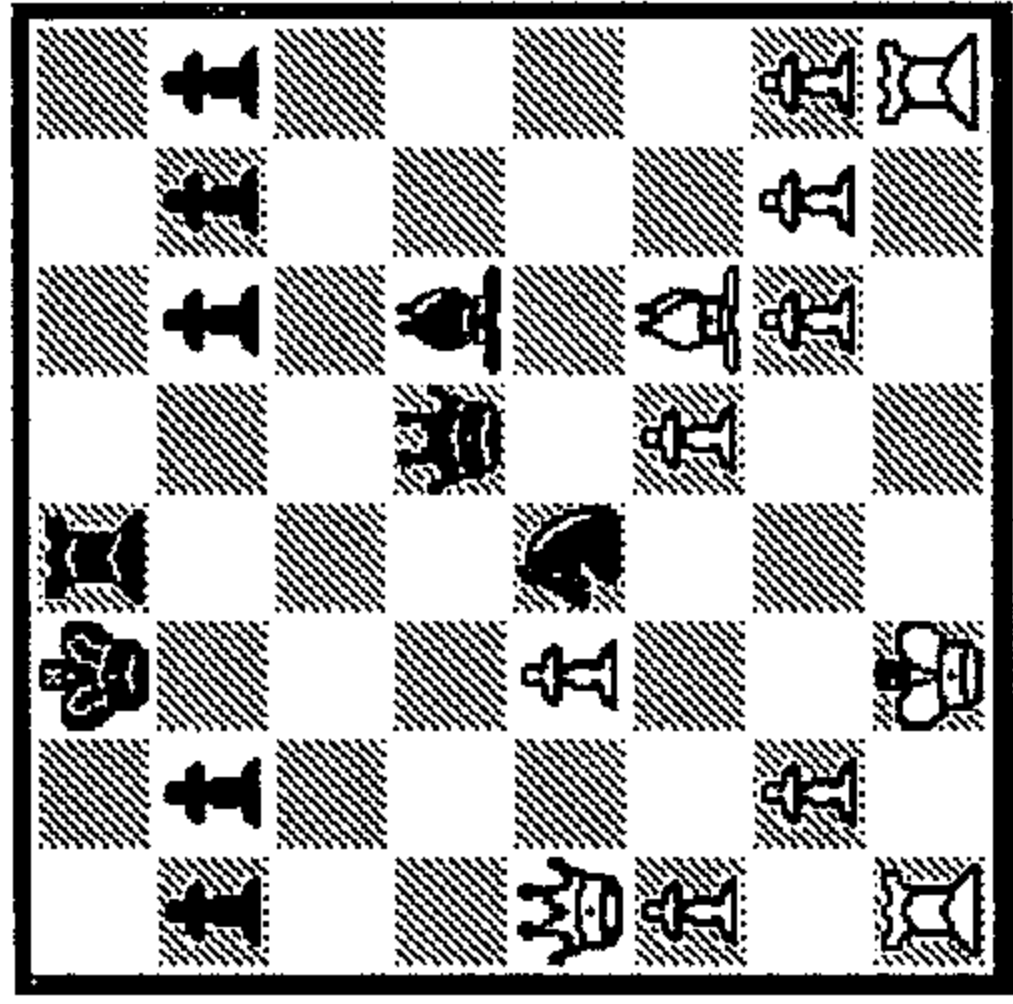
- 1_
- 2_
- 3_



388

1.?

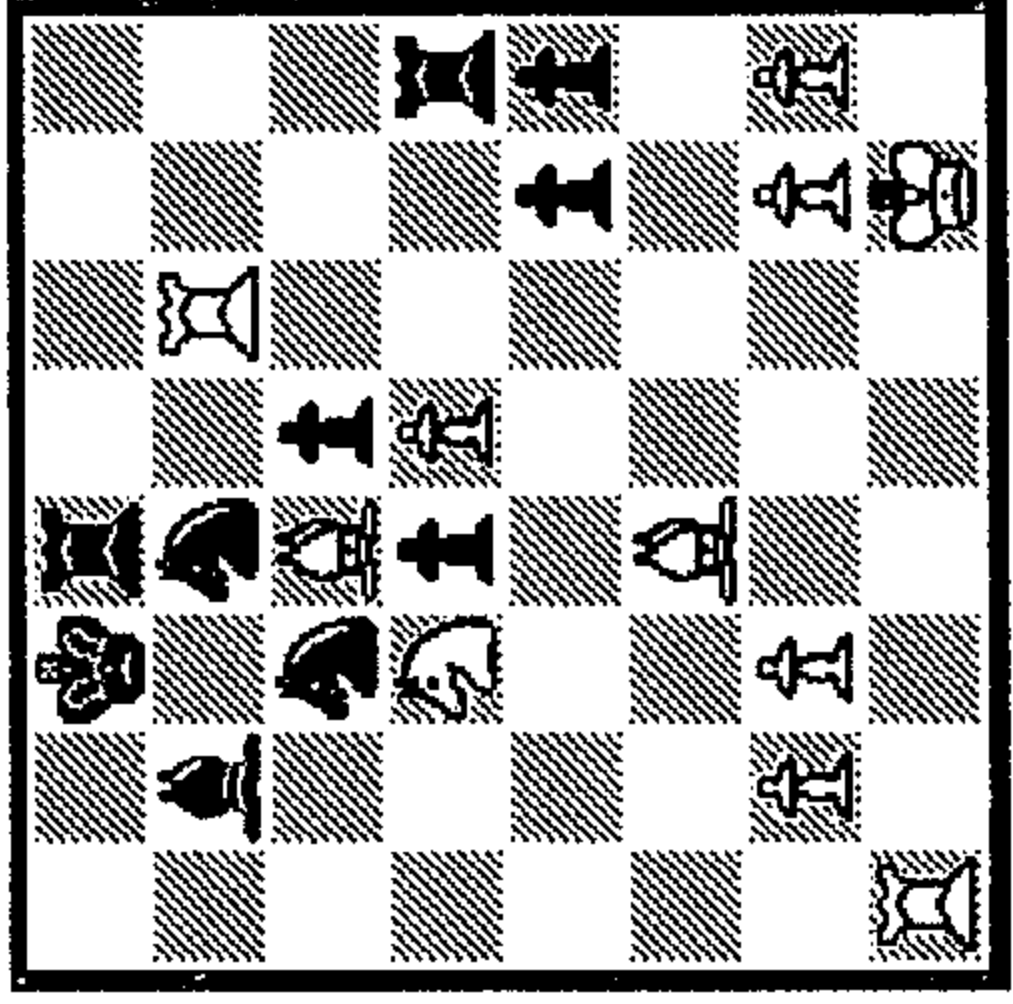
- 1_
- 2_
- 3_



393

1...?

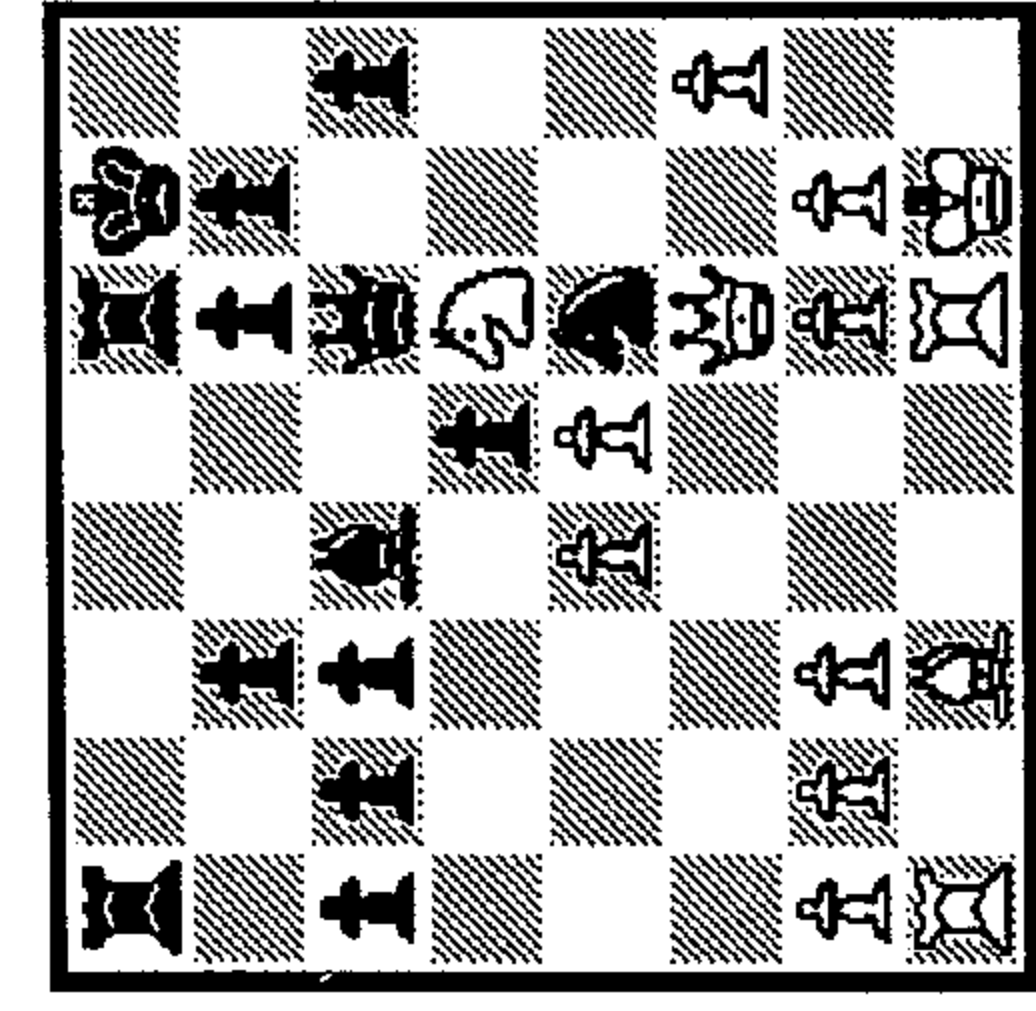
- 1_
- 2_
- 3_



394

1.?

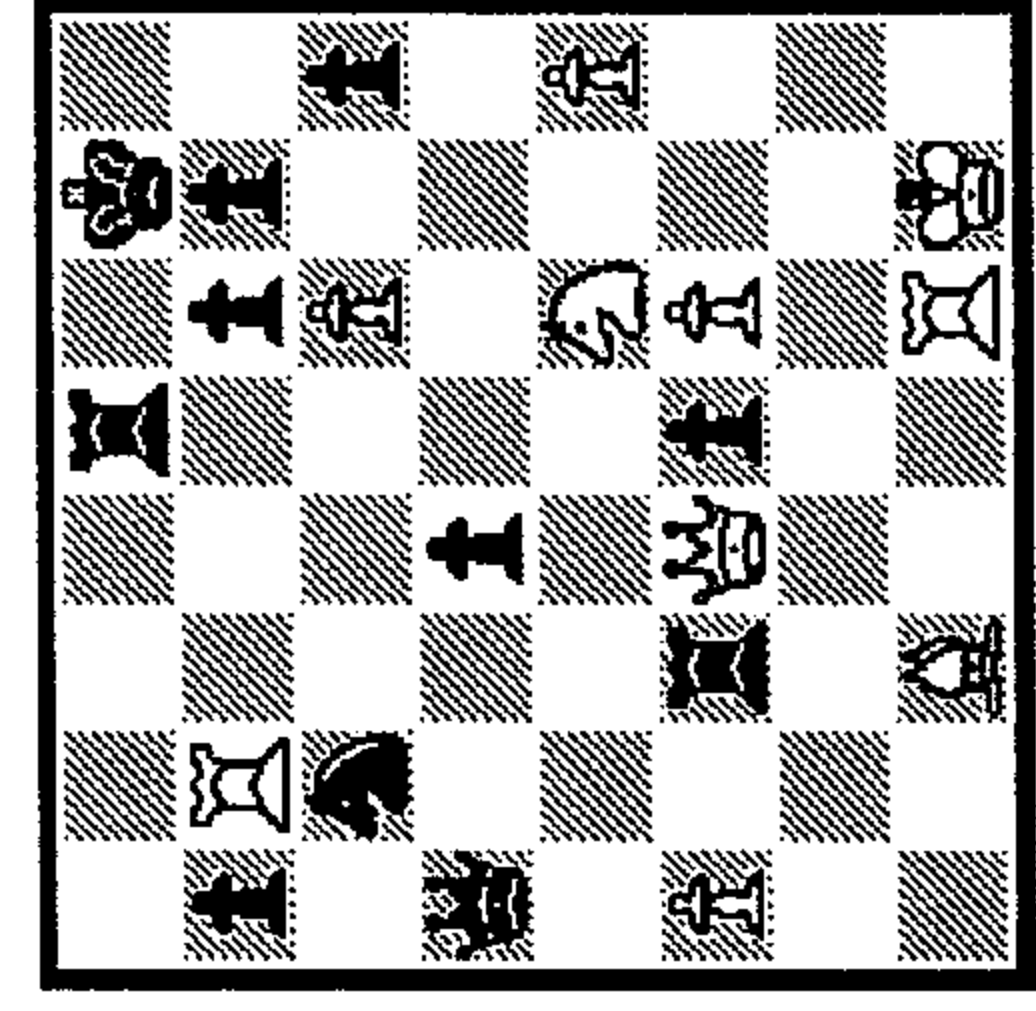
- 1_
- 2_
- 3_



395

1.?

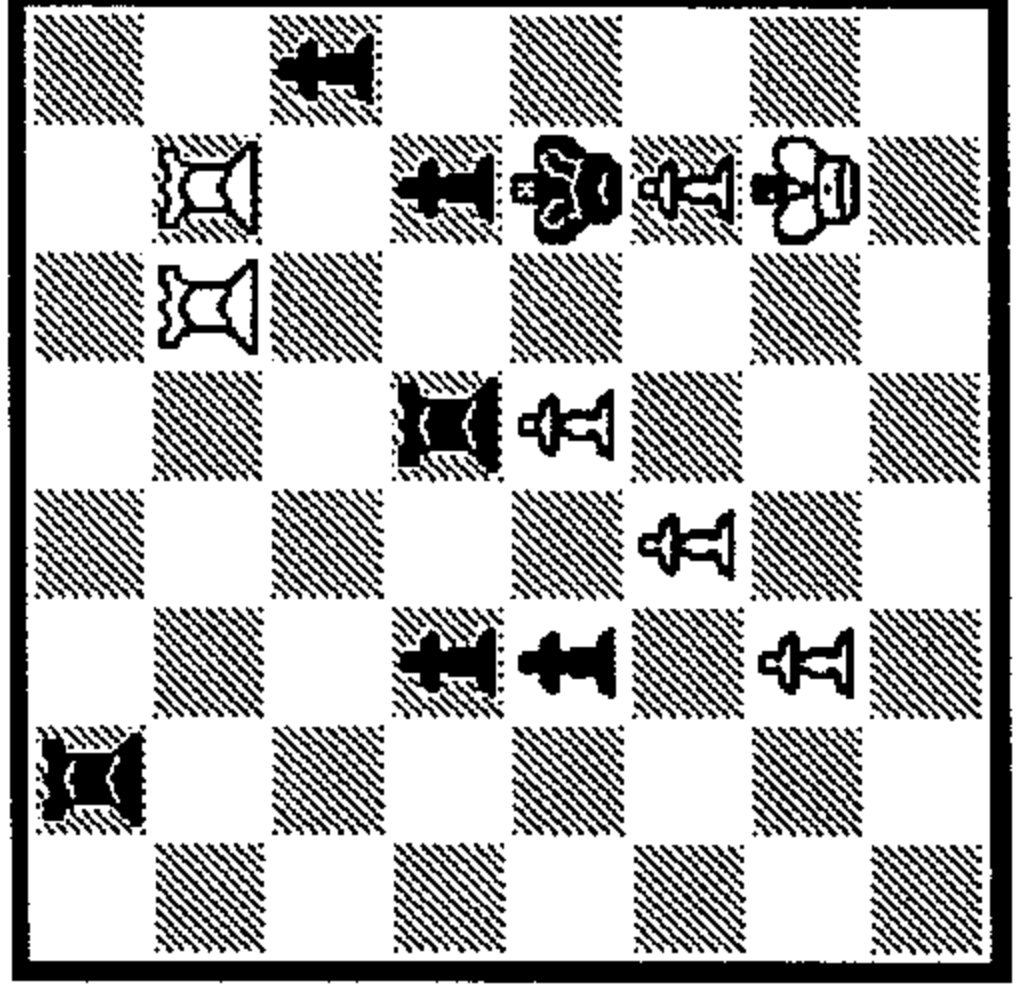
1-
2-
3-



396

1.?

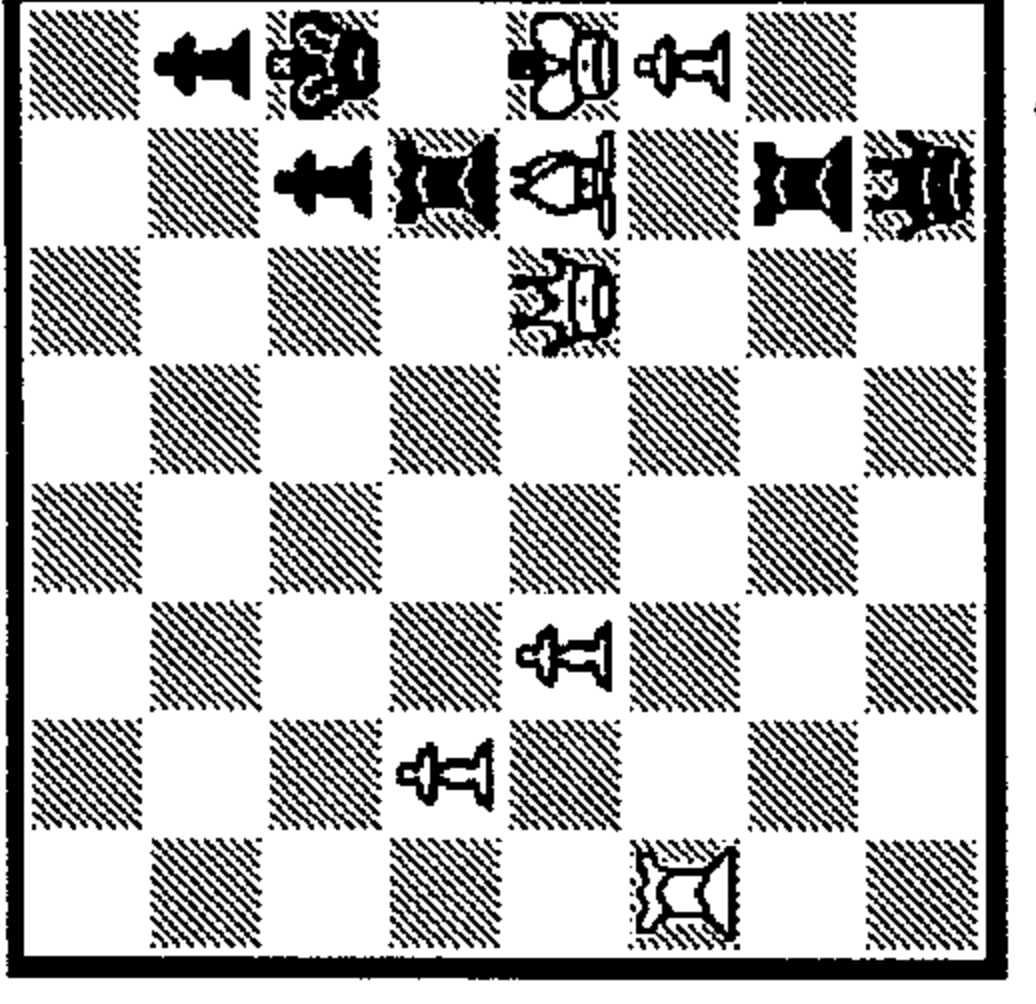
1-
2-
3-



401

1.?

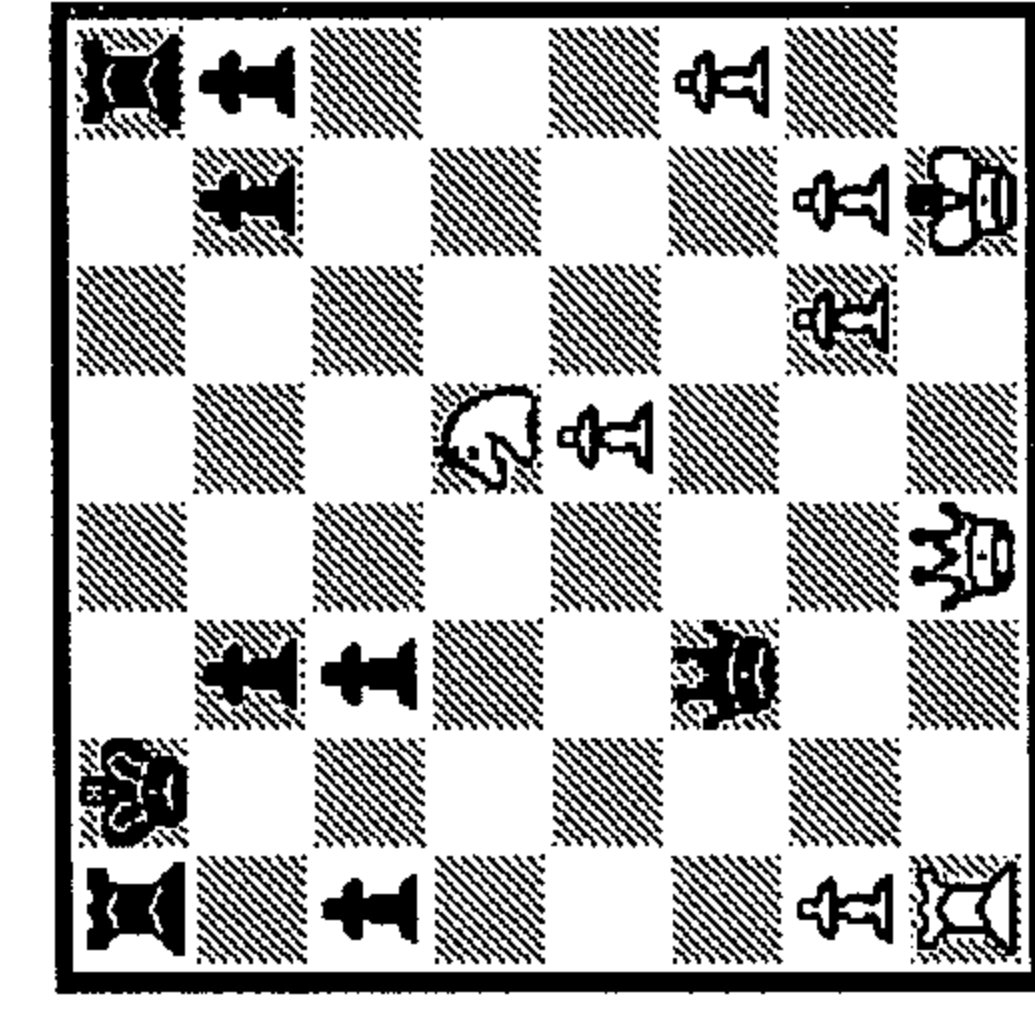
1-
2-
3-



402

1...?

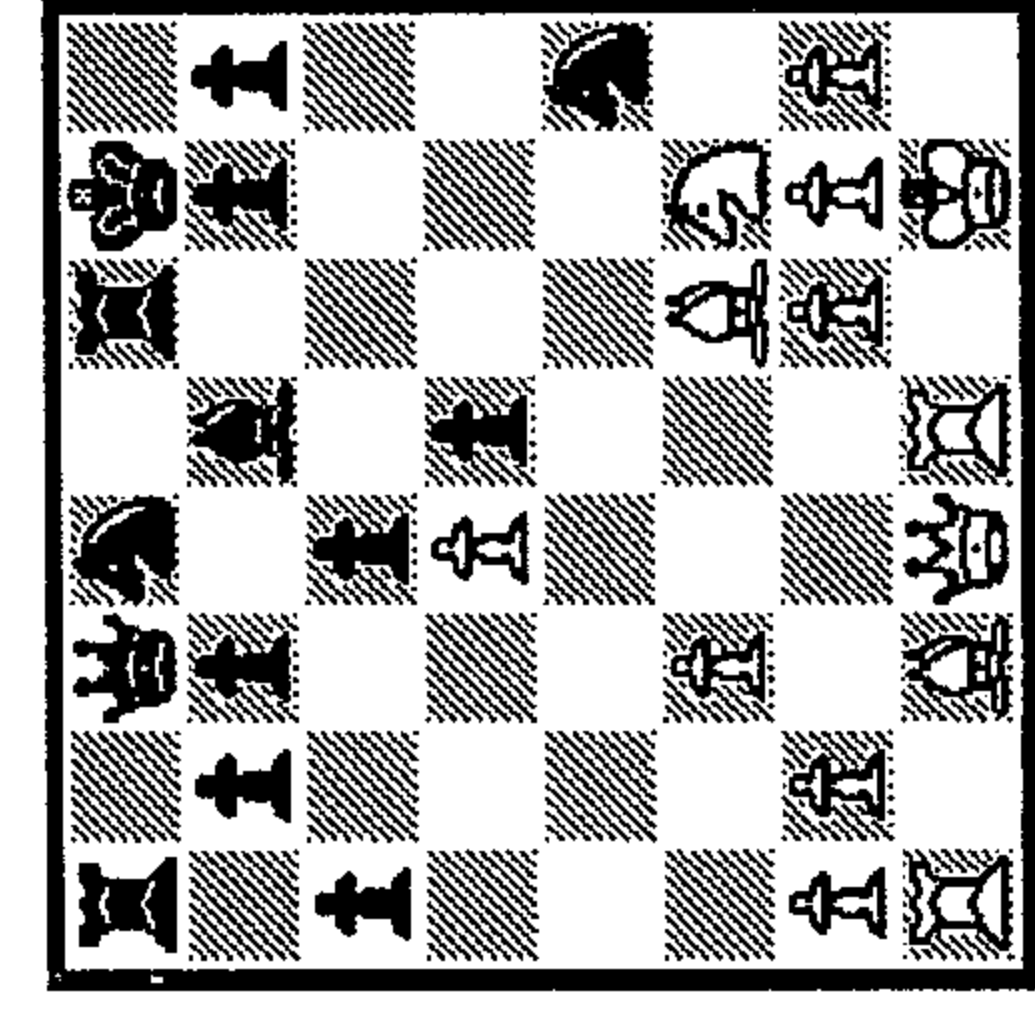
1-
2-
3-



397

1.?

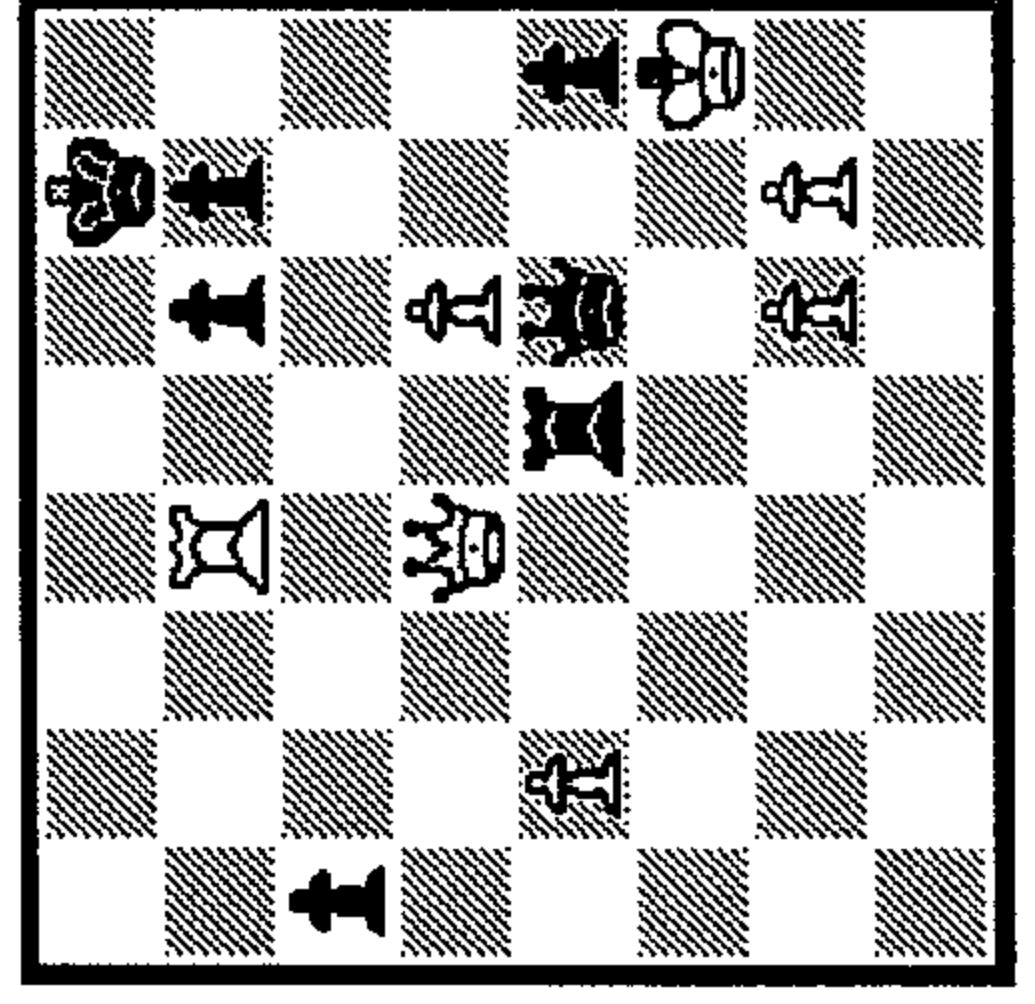
1-
2-
3-



398

1...?

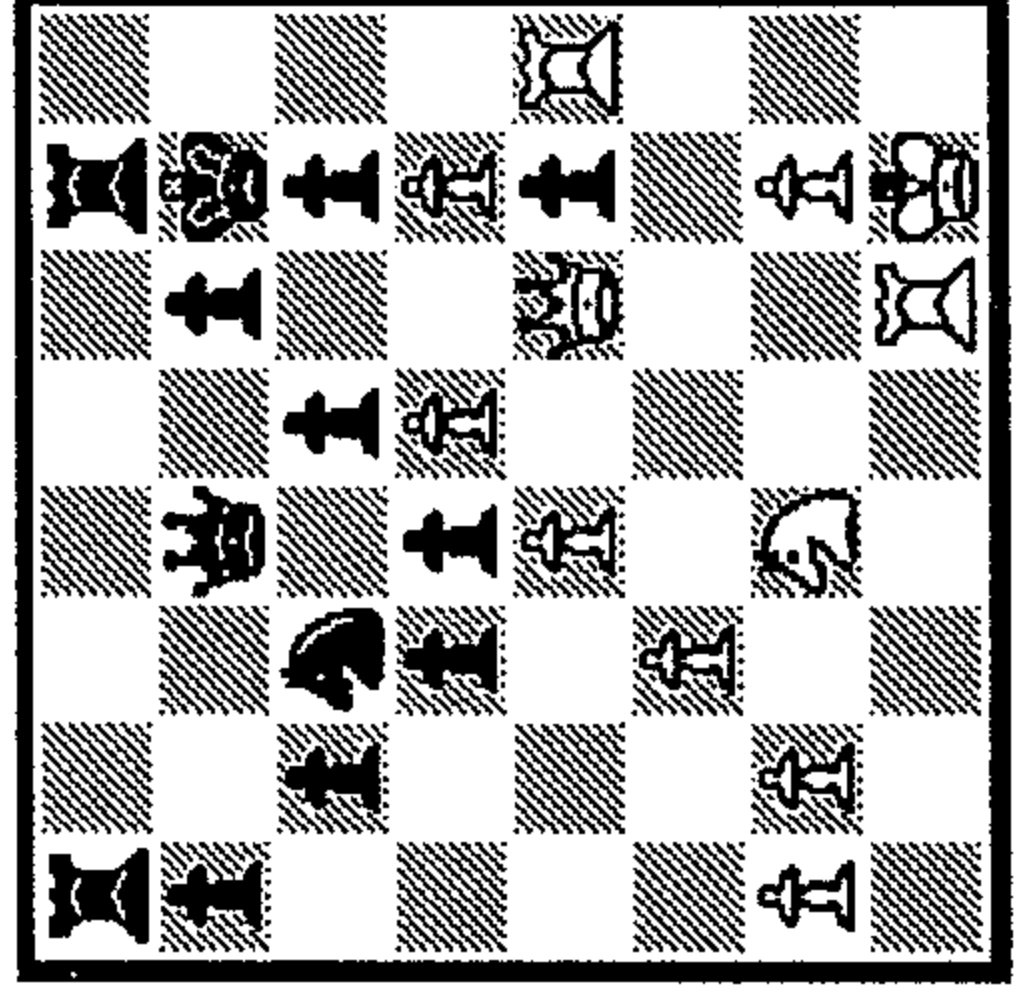
1-
2-
3-



403

1...?

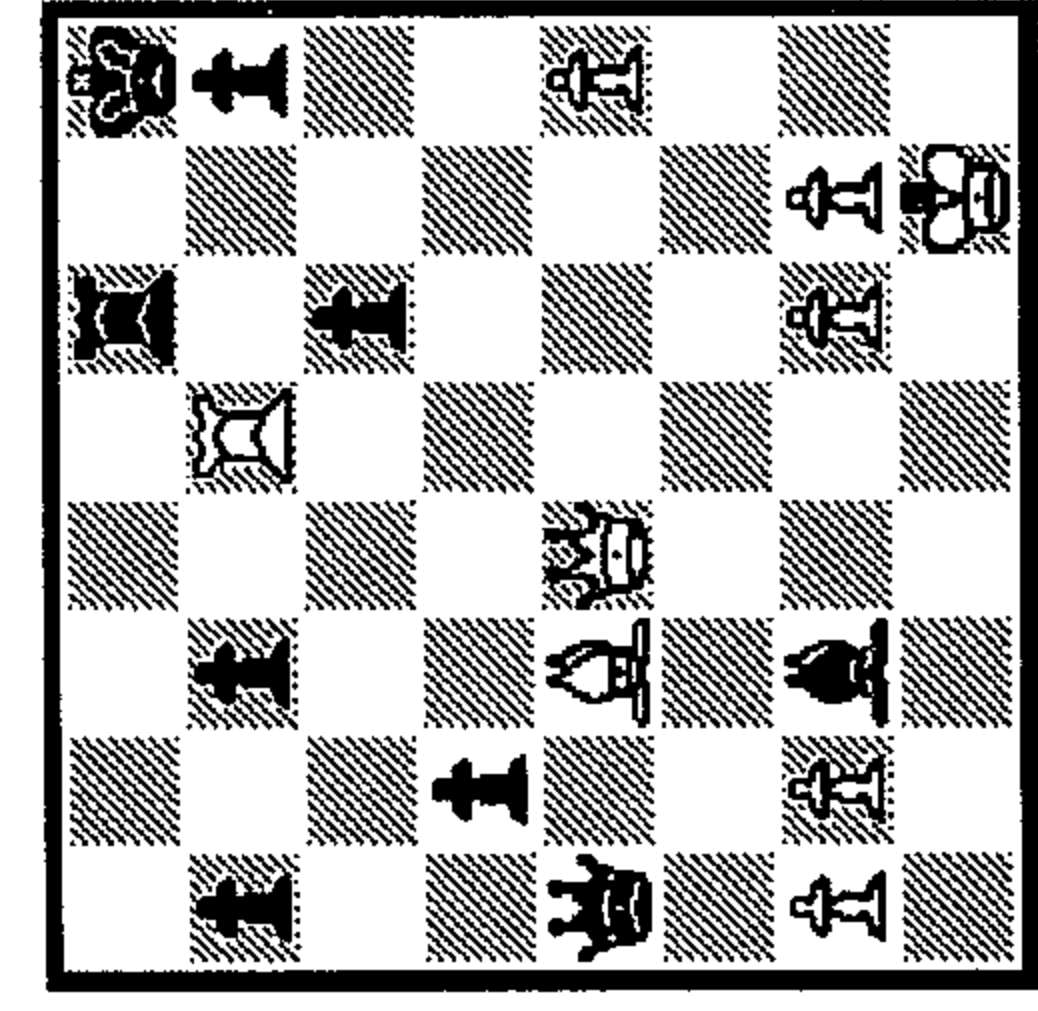
1-
2-
3-



404

1.?

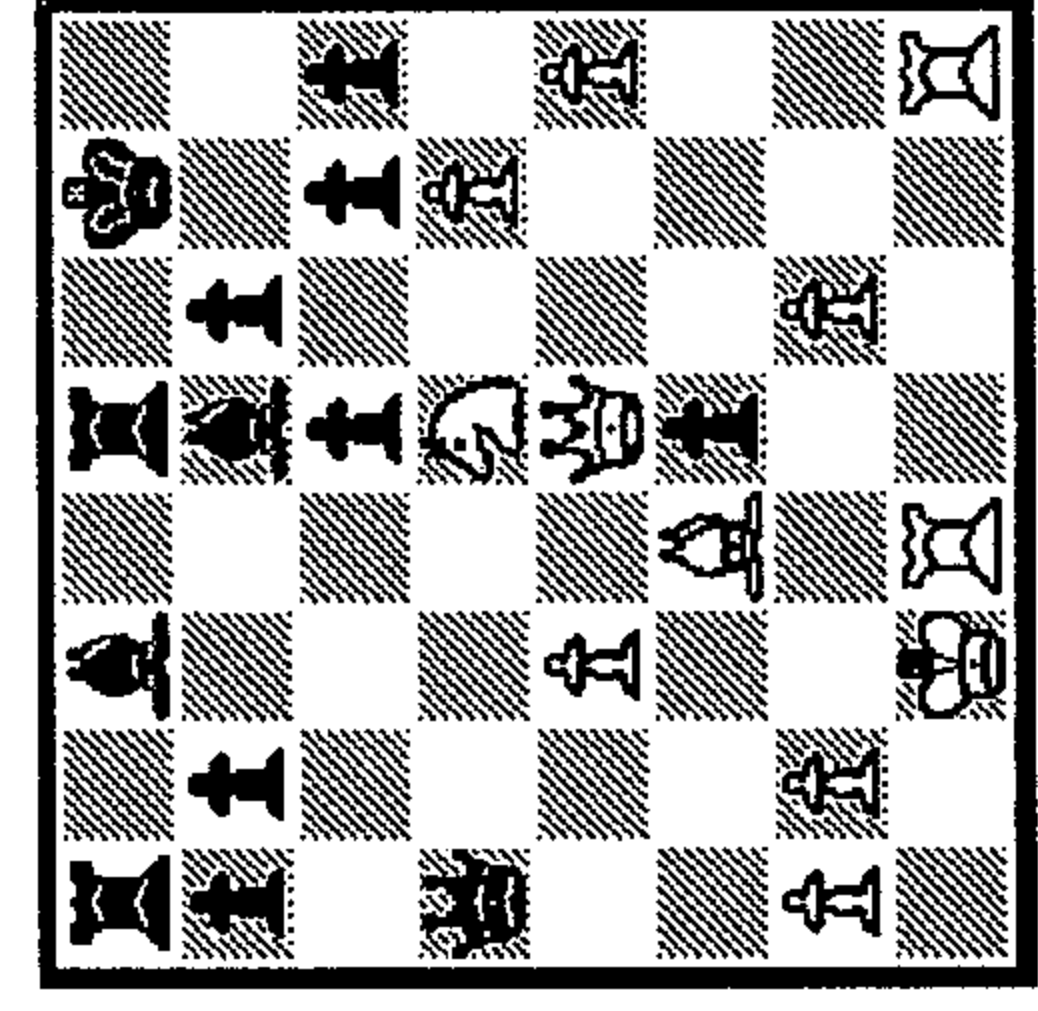
1-
2-
3-



399

1.?

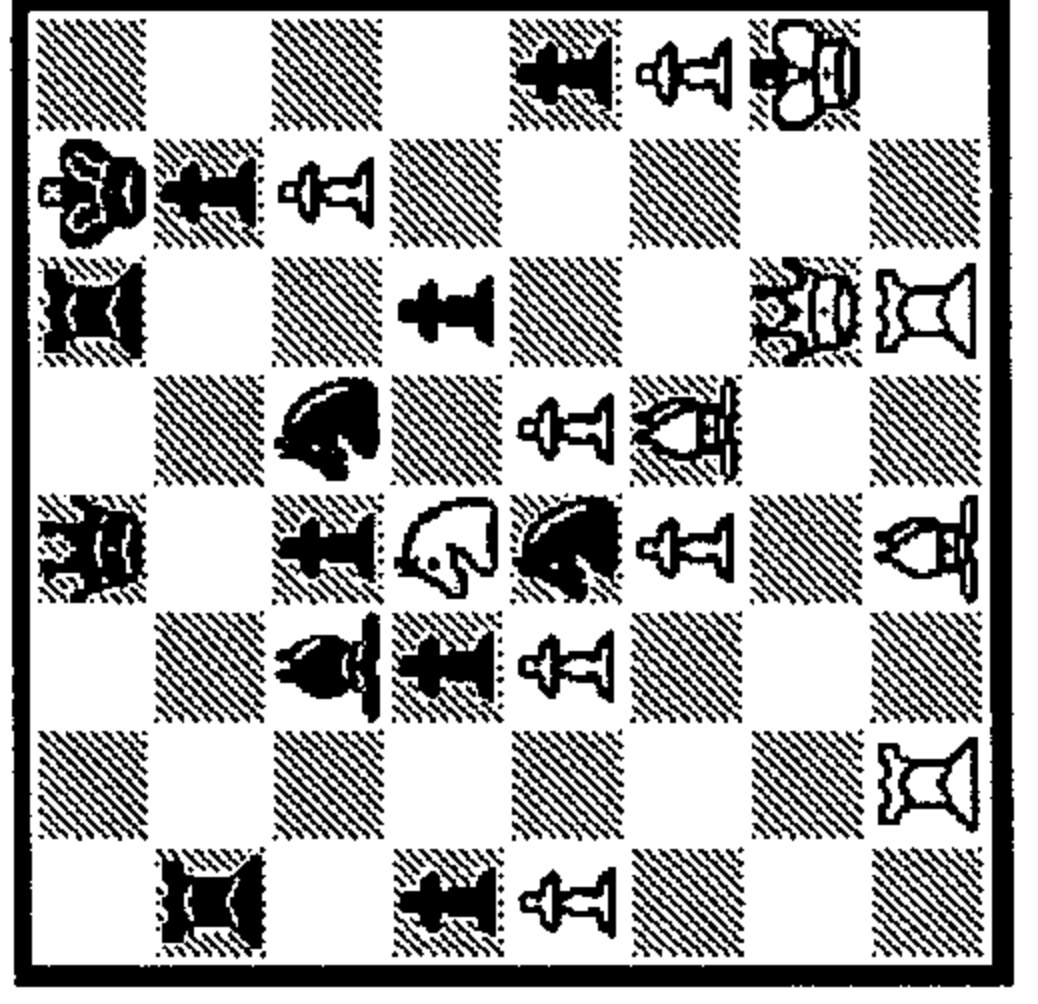
1-
2-
3-



400

1.?

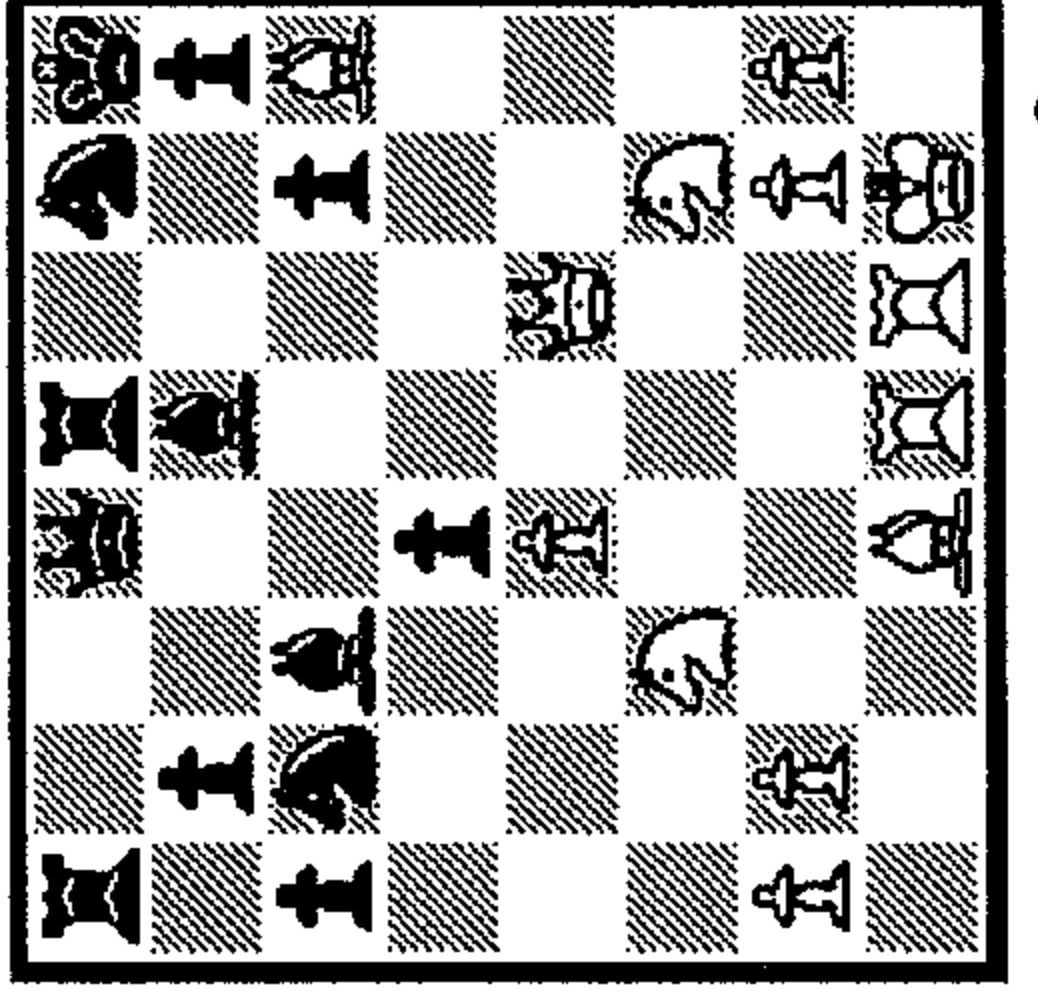
1-
2-
3-



405

1.?

1-
2-
3-



406

1.?

1-
2-
3-