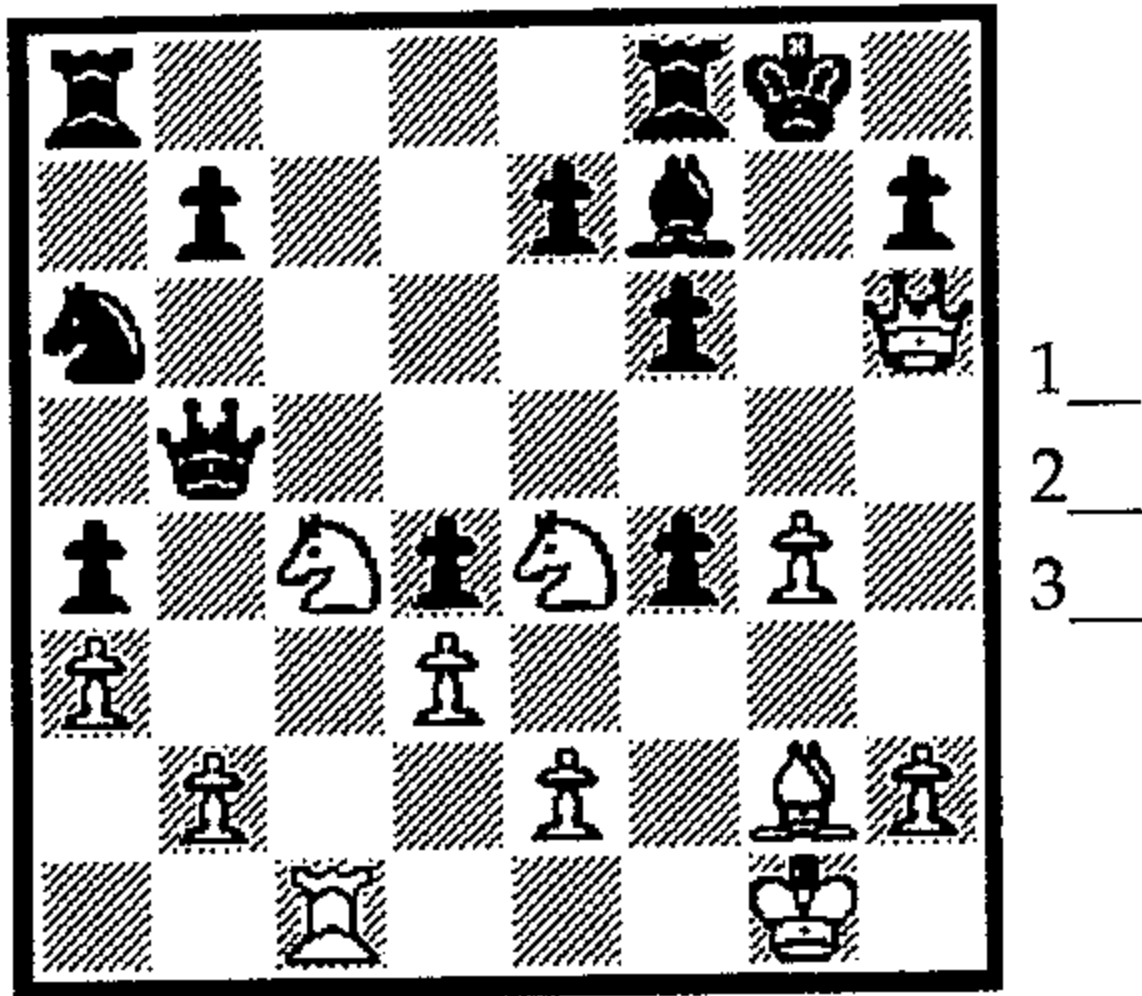
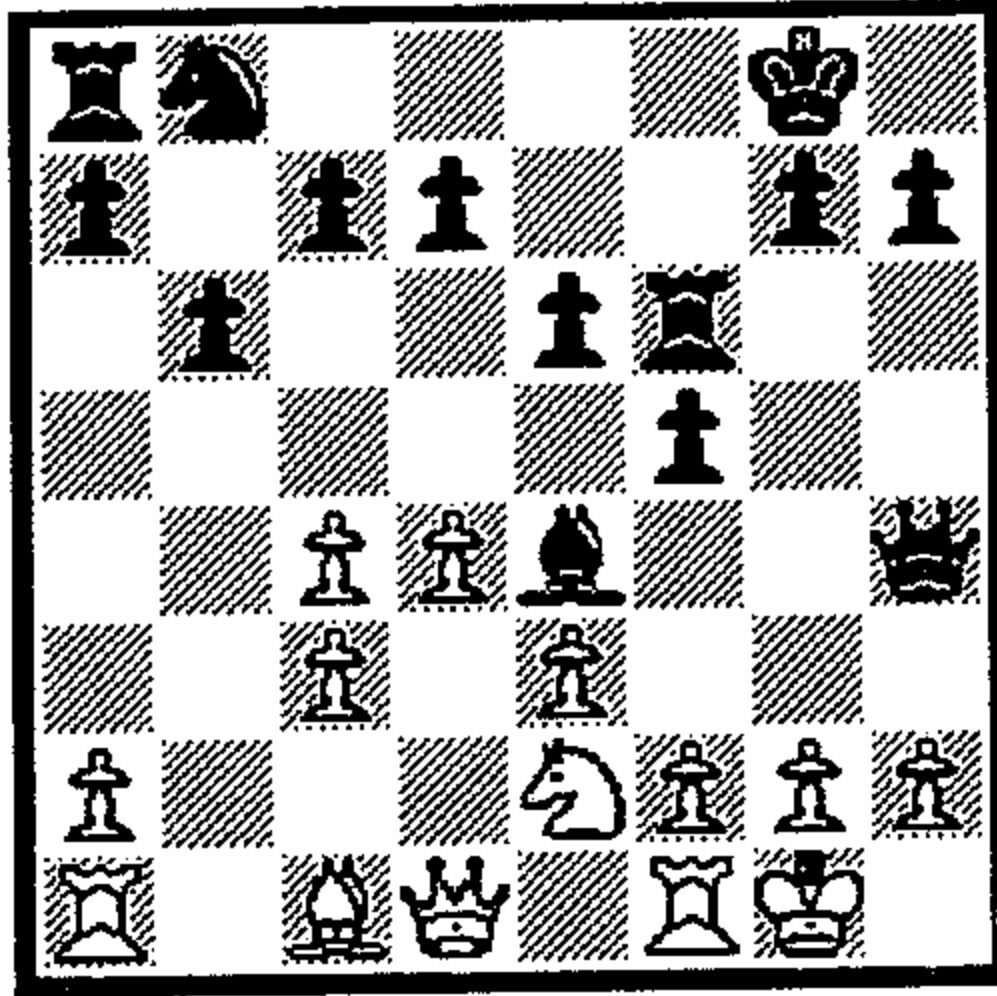


# BACK RANK

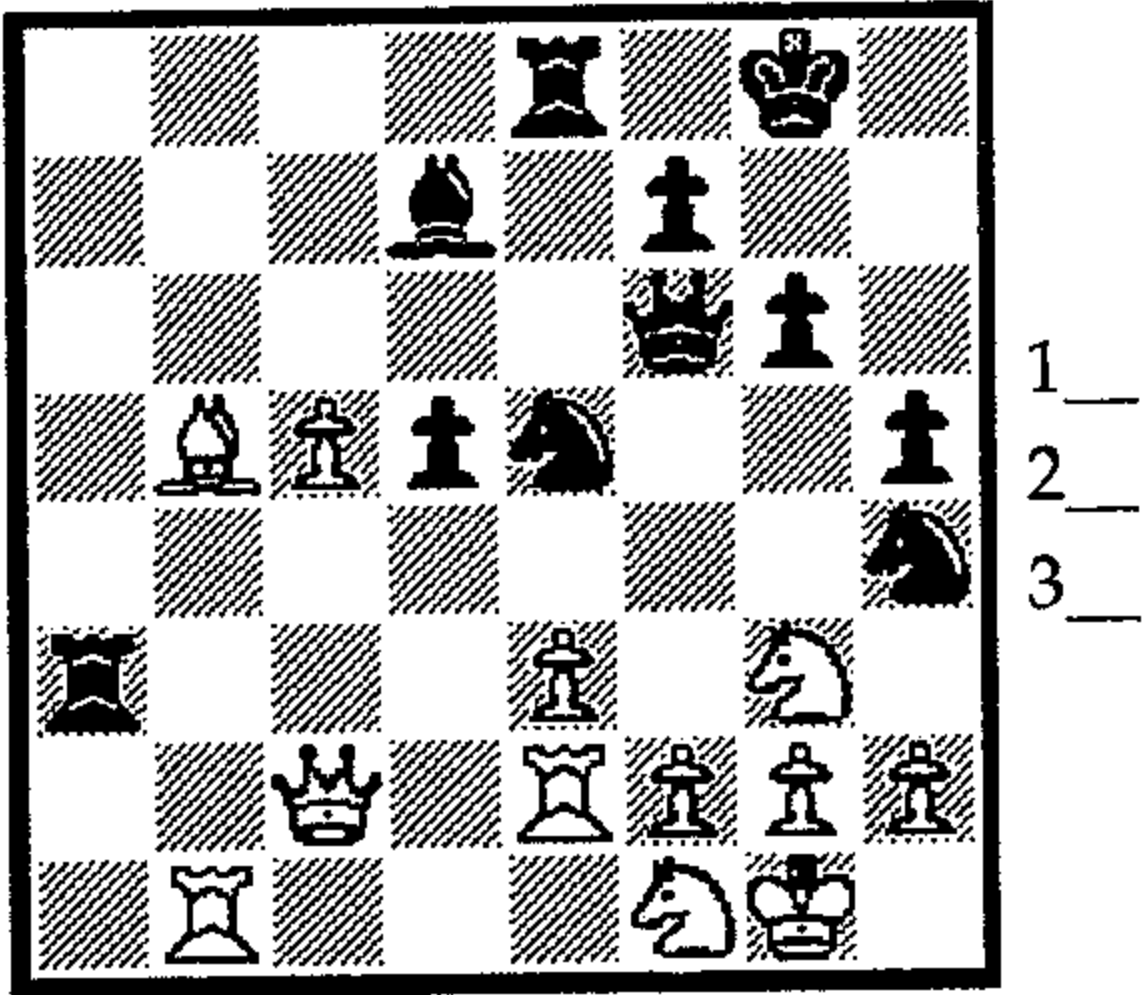
Combinations based on the vulnerable back rank are made possible by the targeted King being hemmed in by his own pawns and/or pieces. The simplest examples of this type of combination occur when the back rank is left without a Queen or Rook to help defend against invading heavy pieces. As some of these examples will show, even an apparently well-guarded back rank can often be exploited by the resourceful attacker.



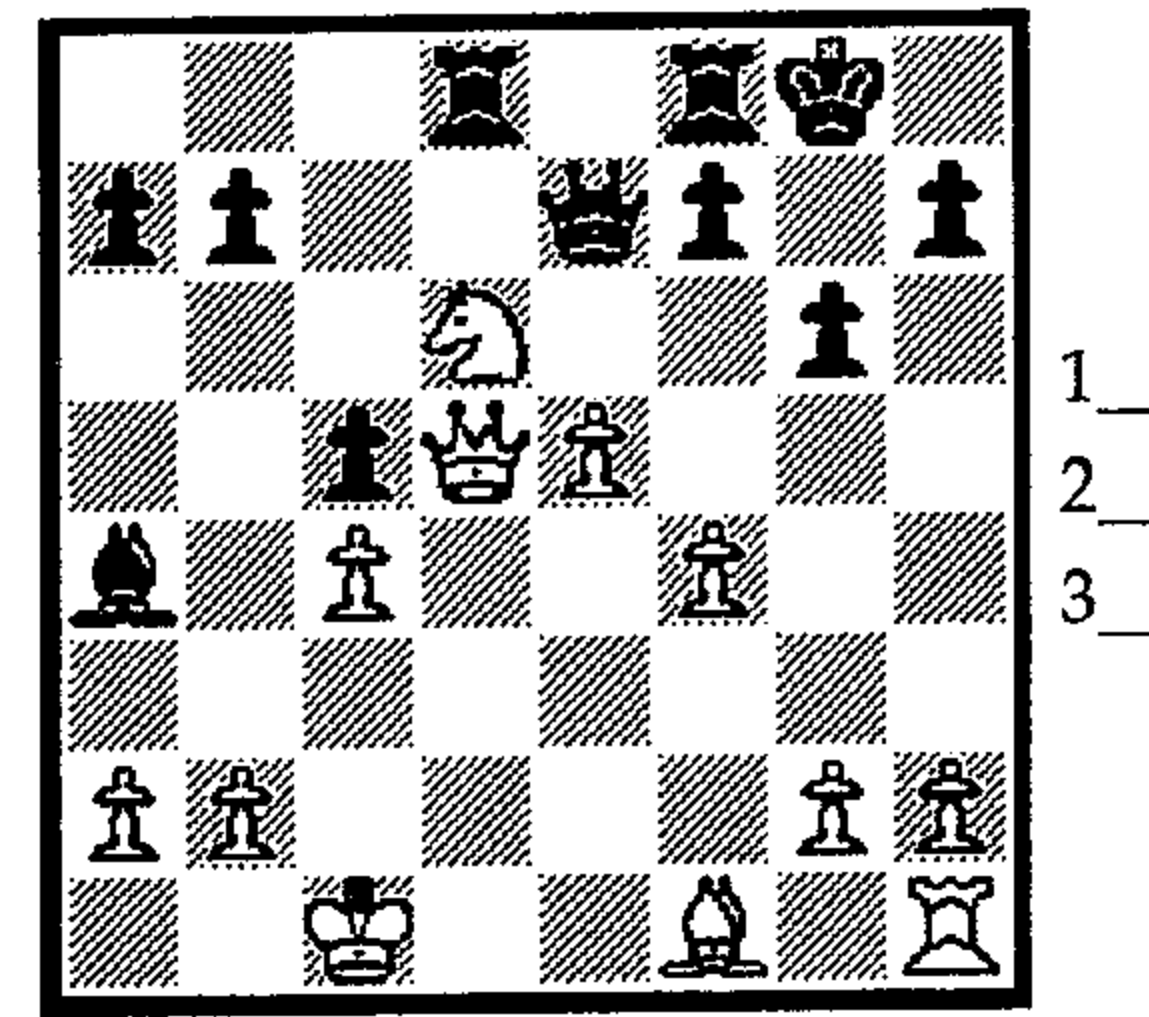
407 1. ?



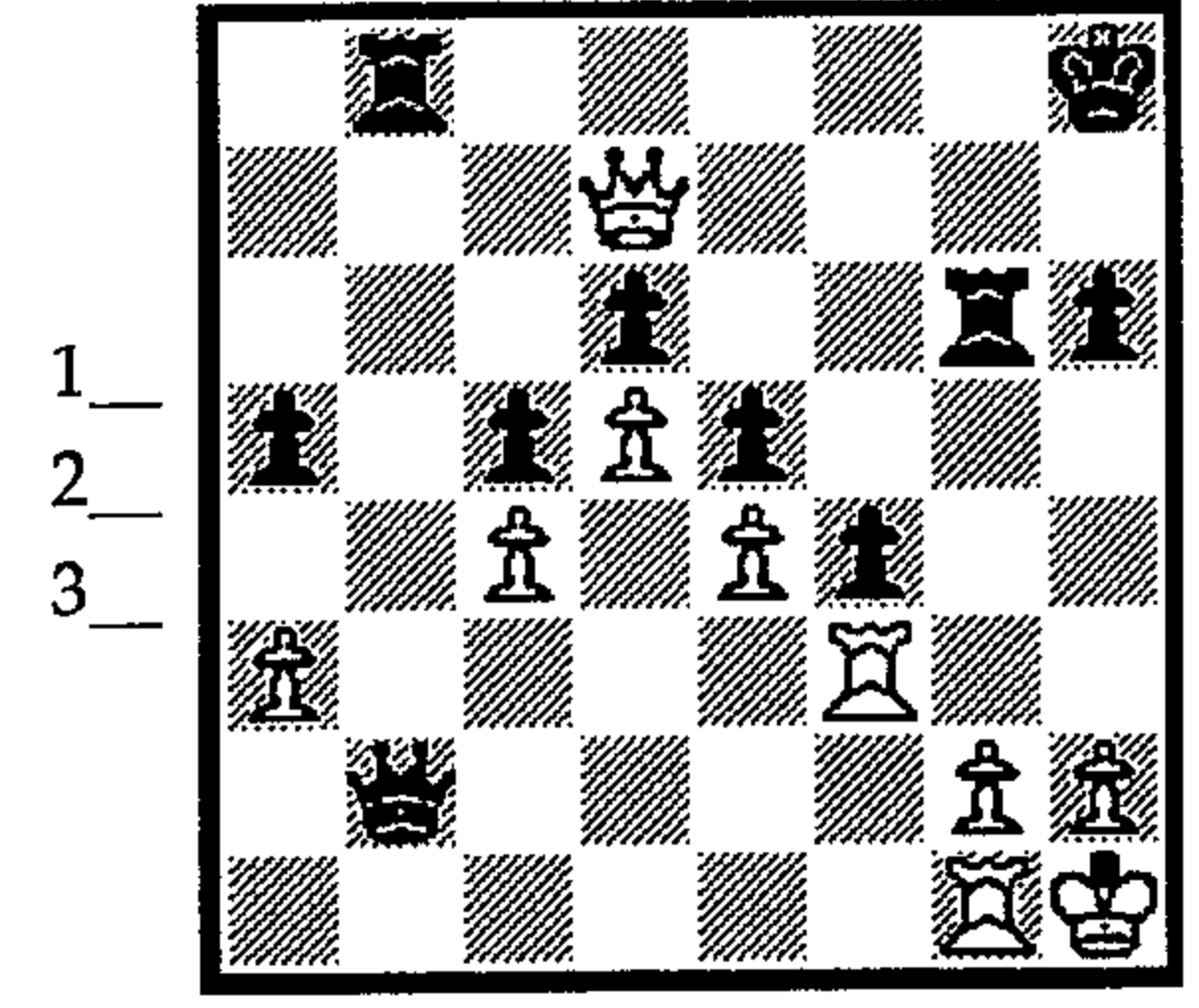
408 1... ?



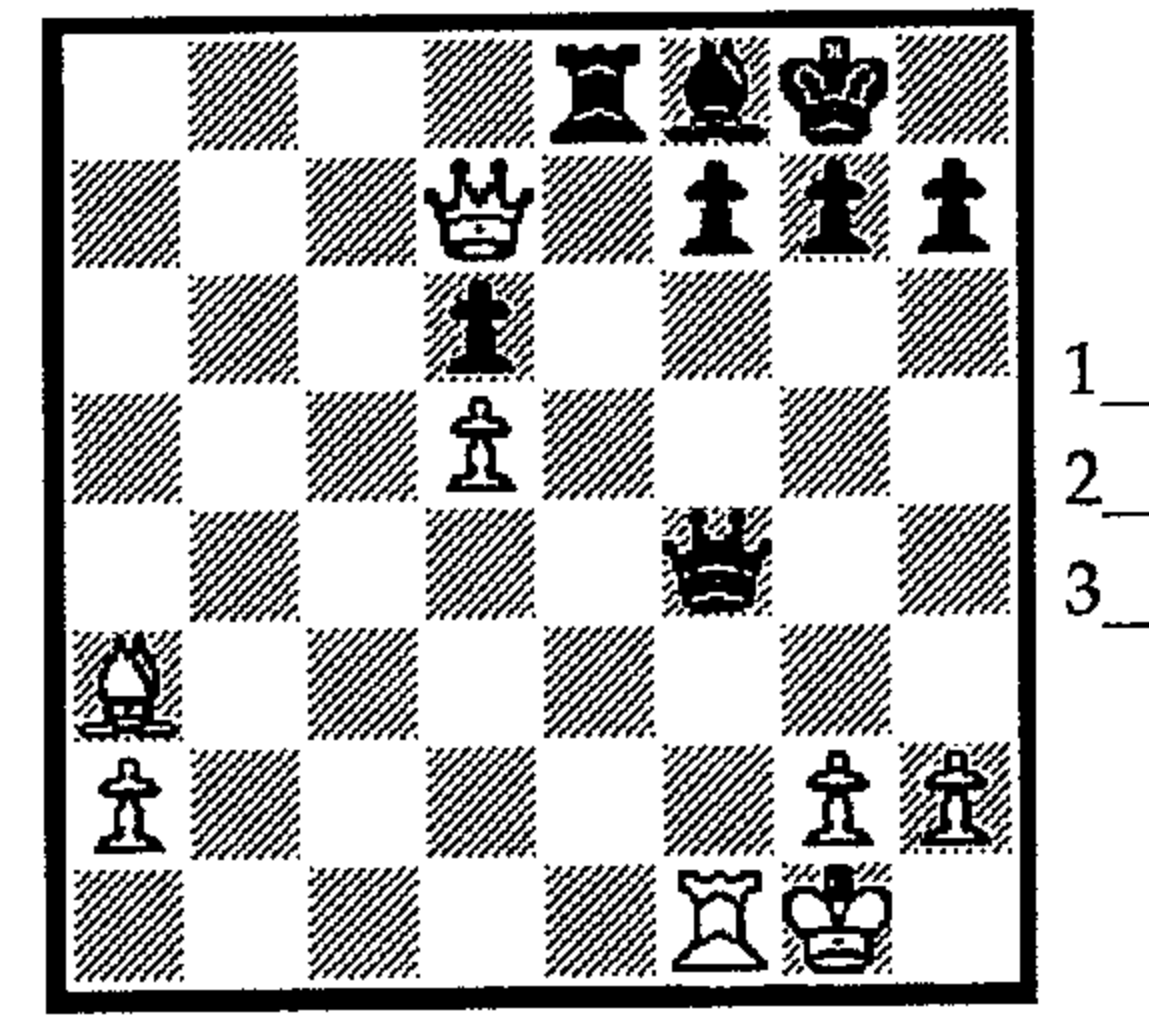
409 1... ?



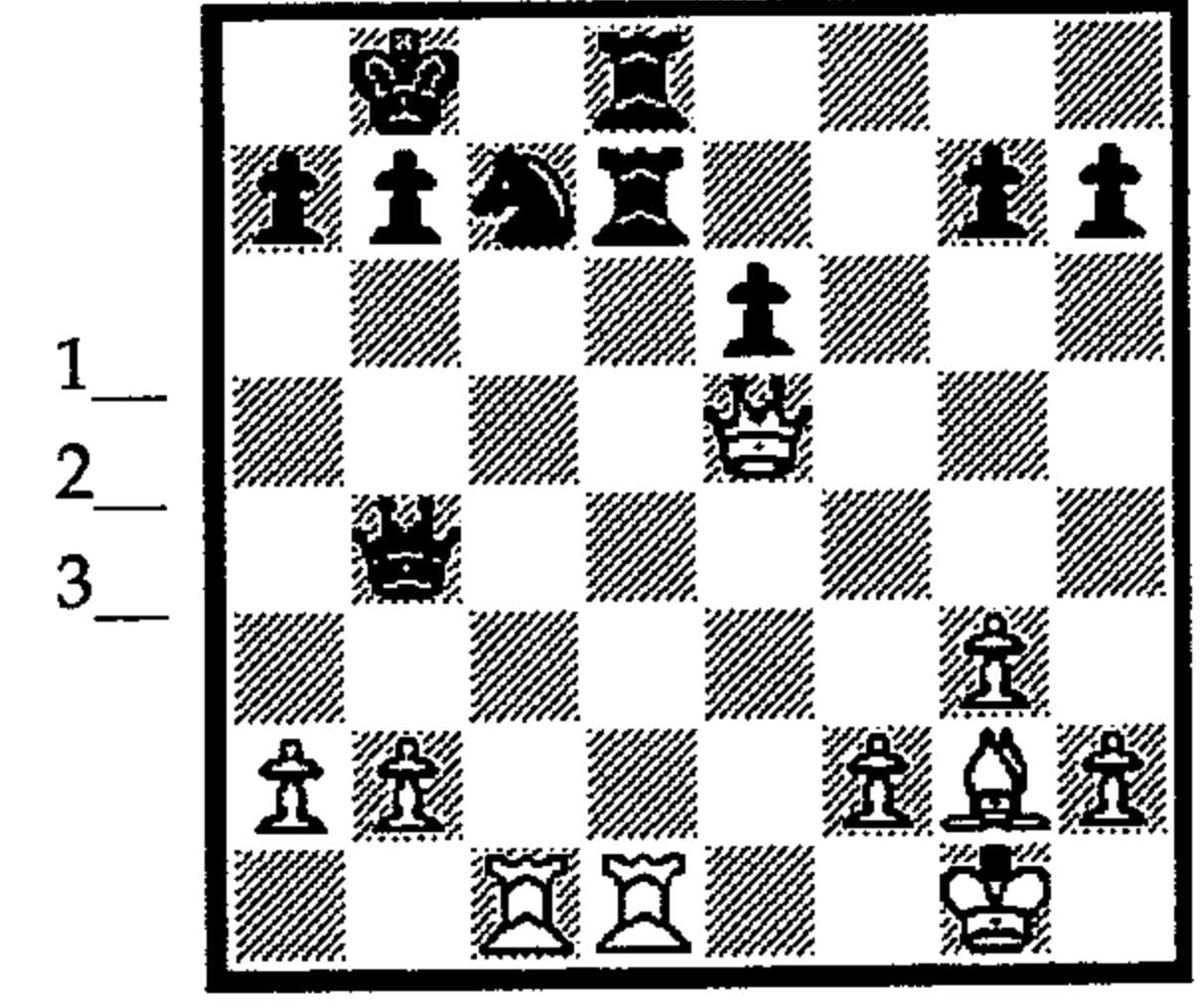
410 1... ?



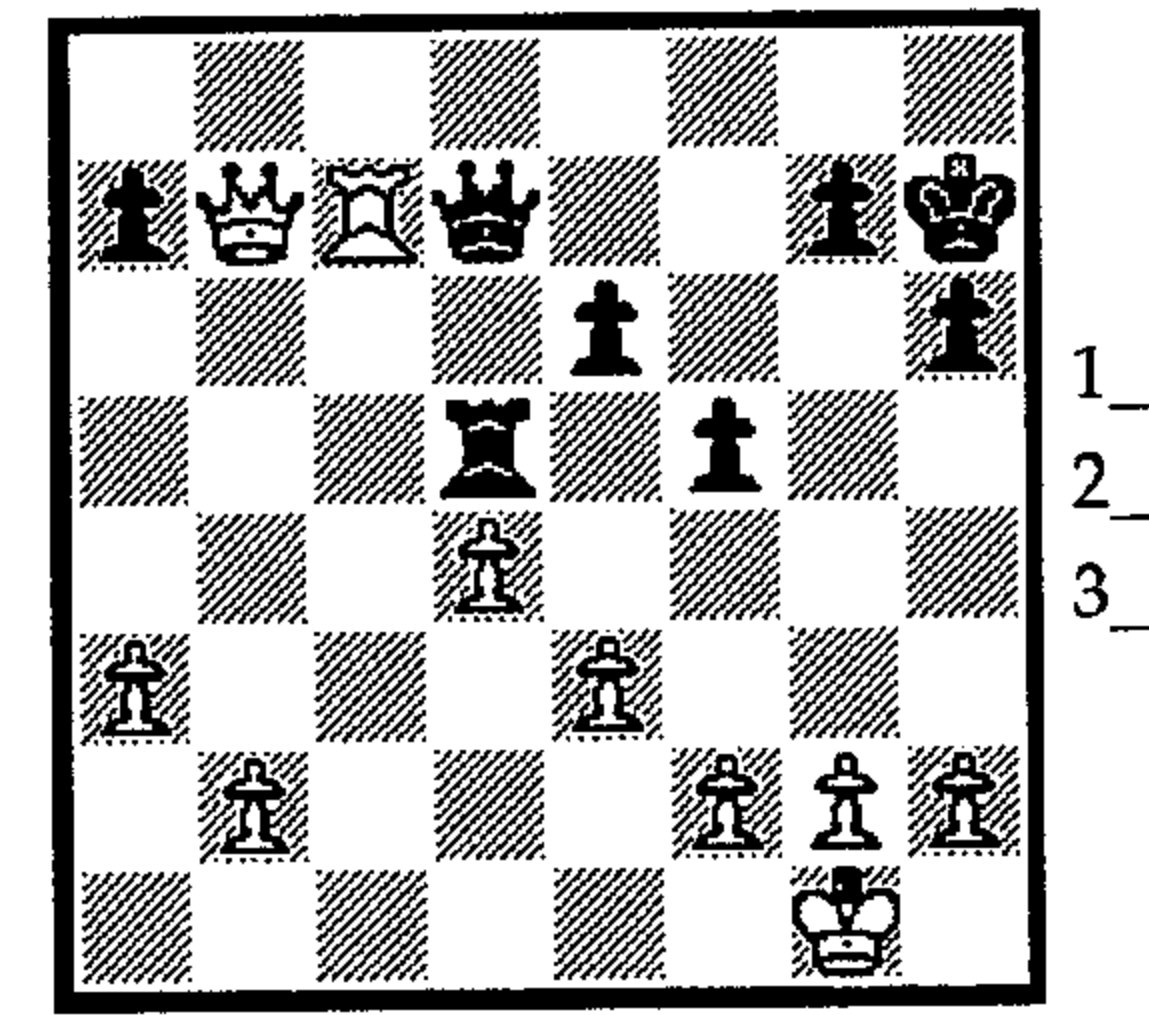
411 1... ?



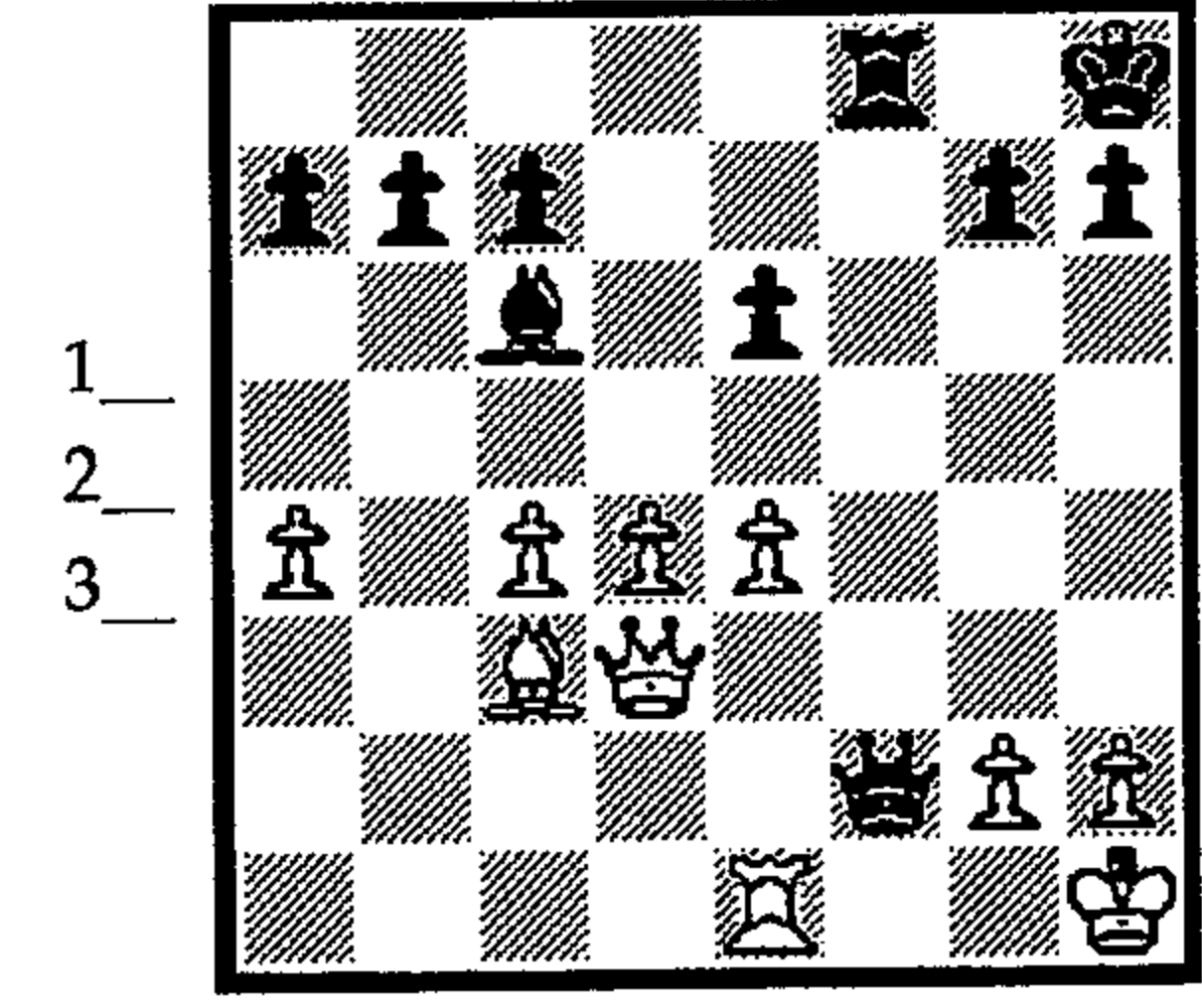
412 1... ?



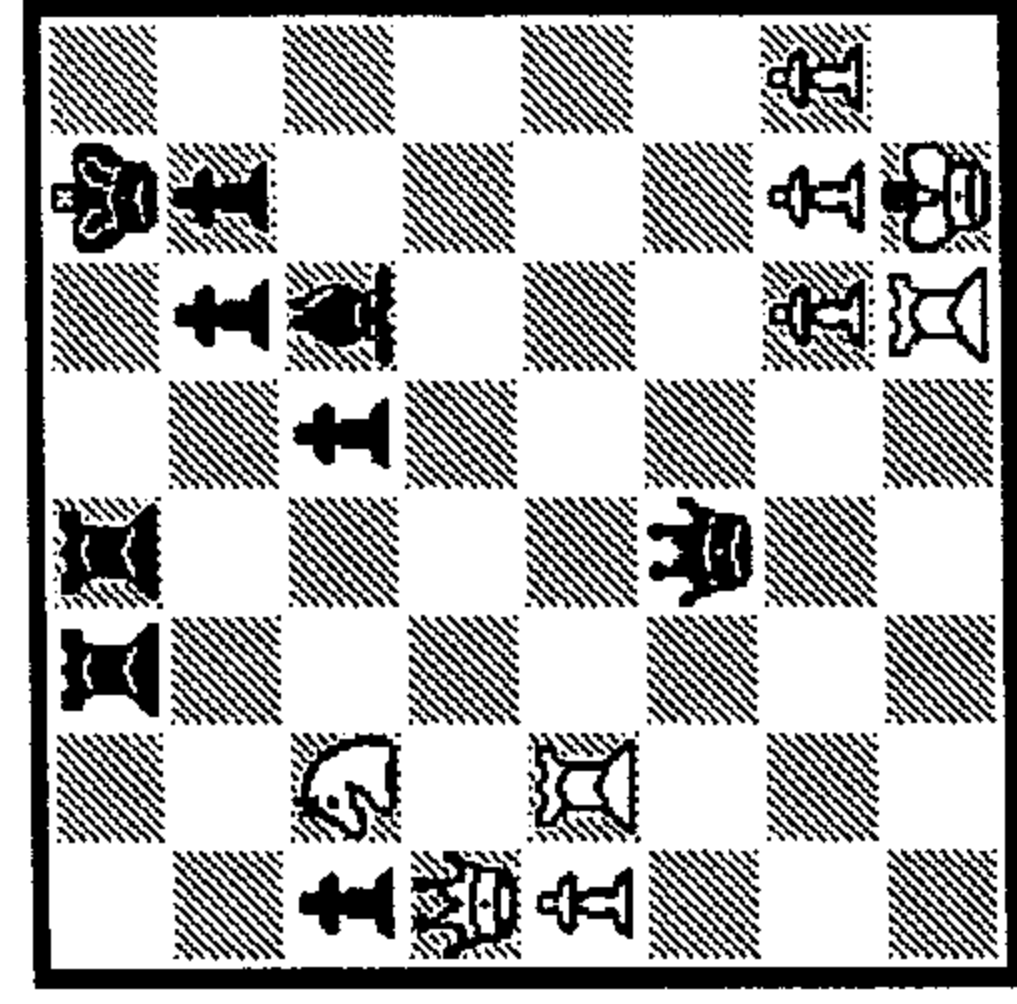
413 1. ?



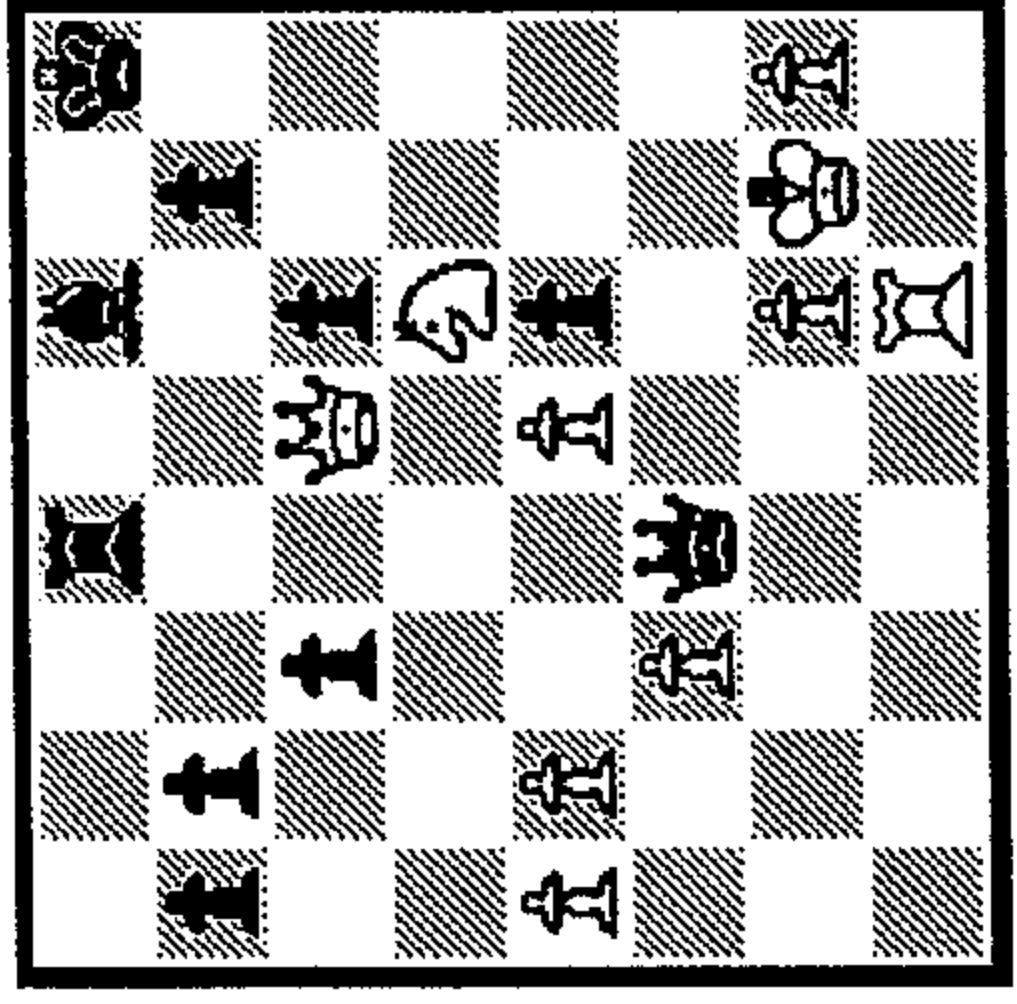
414 1... ?



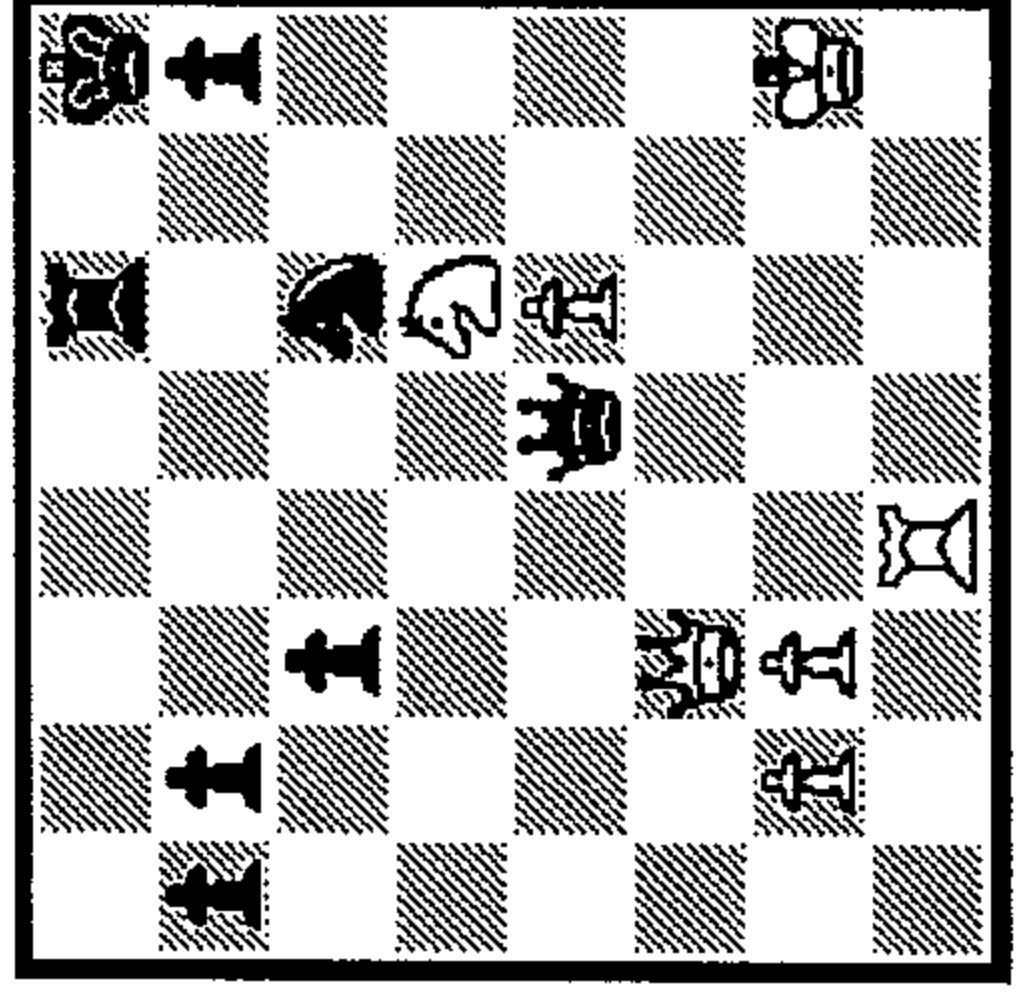
415 1... ?



416 1...?

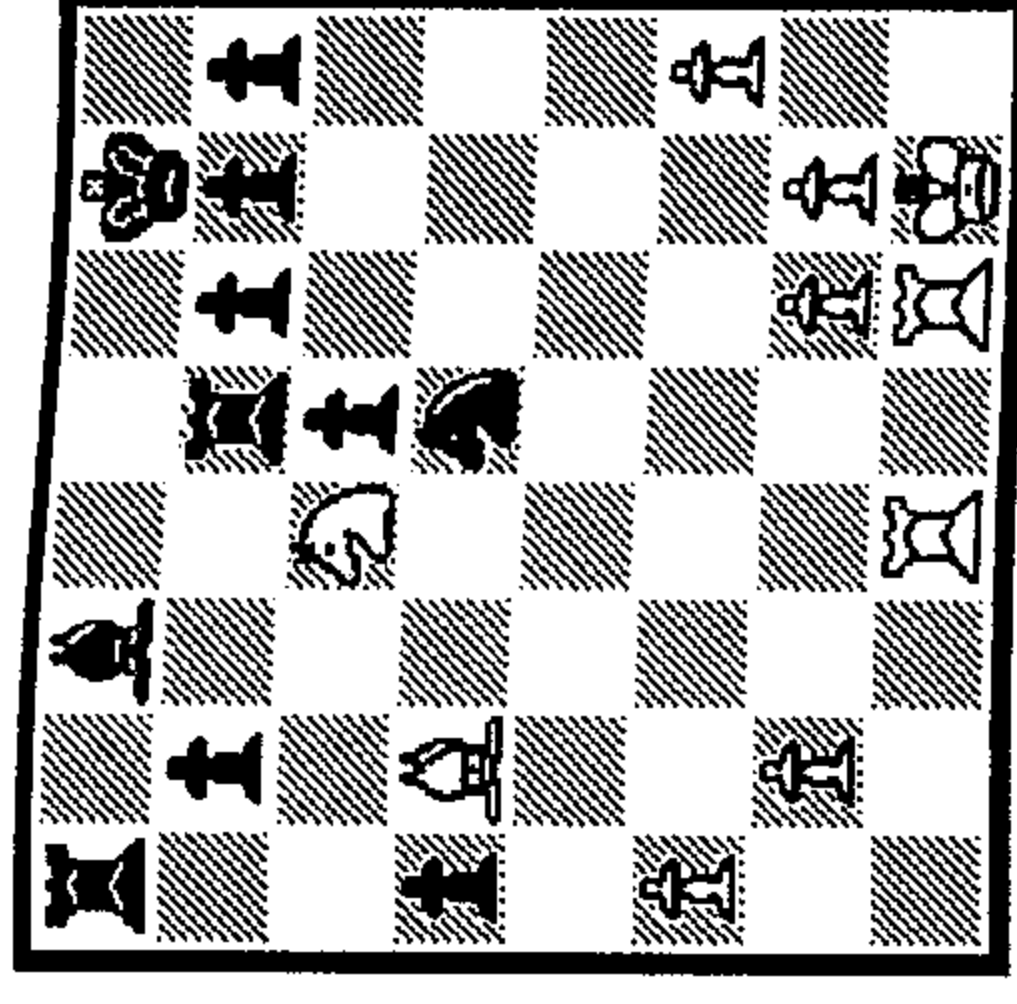


417 1...?



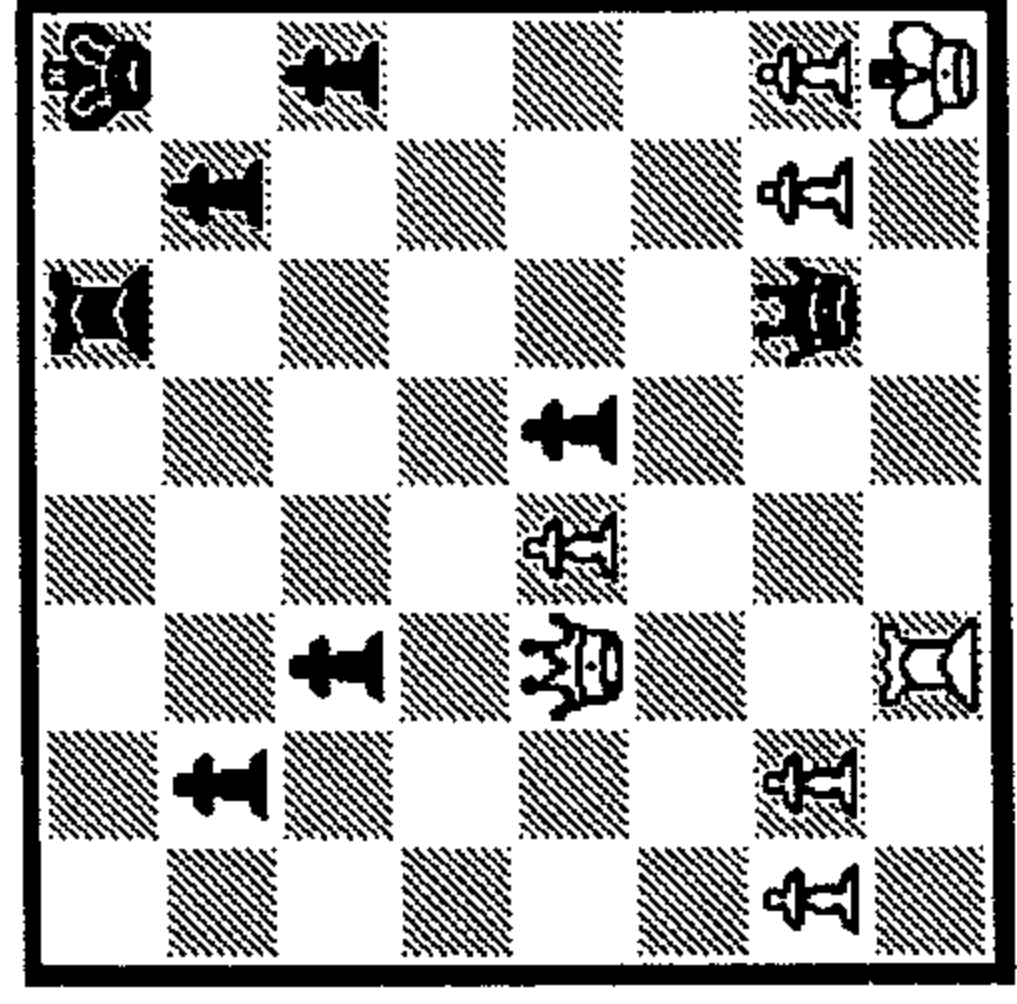
422 1.?

1\_   
 2\_   
 3\_

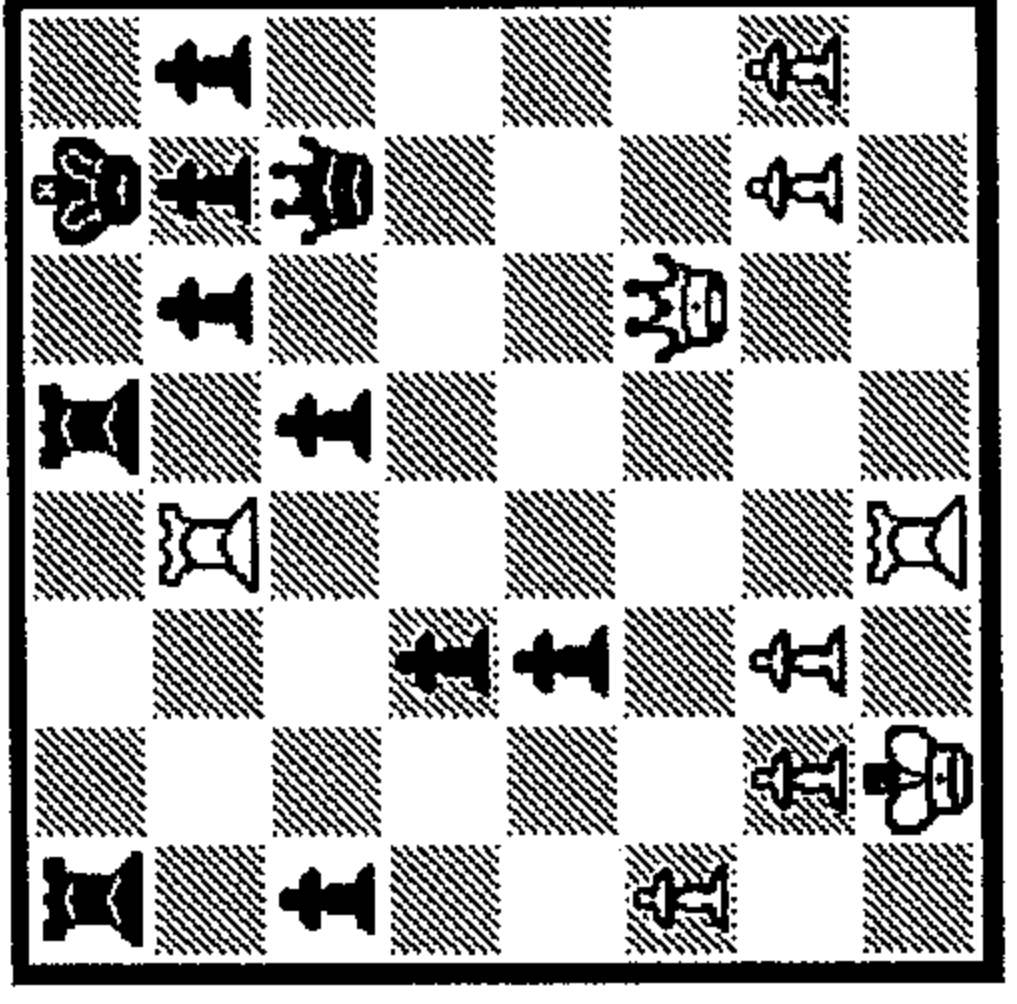


423 1.?

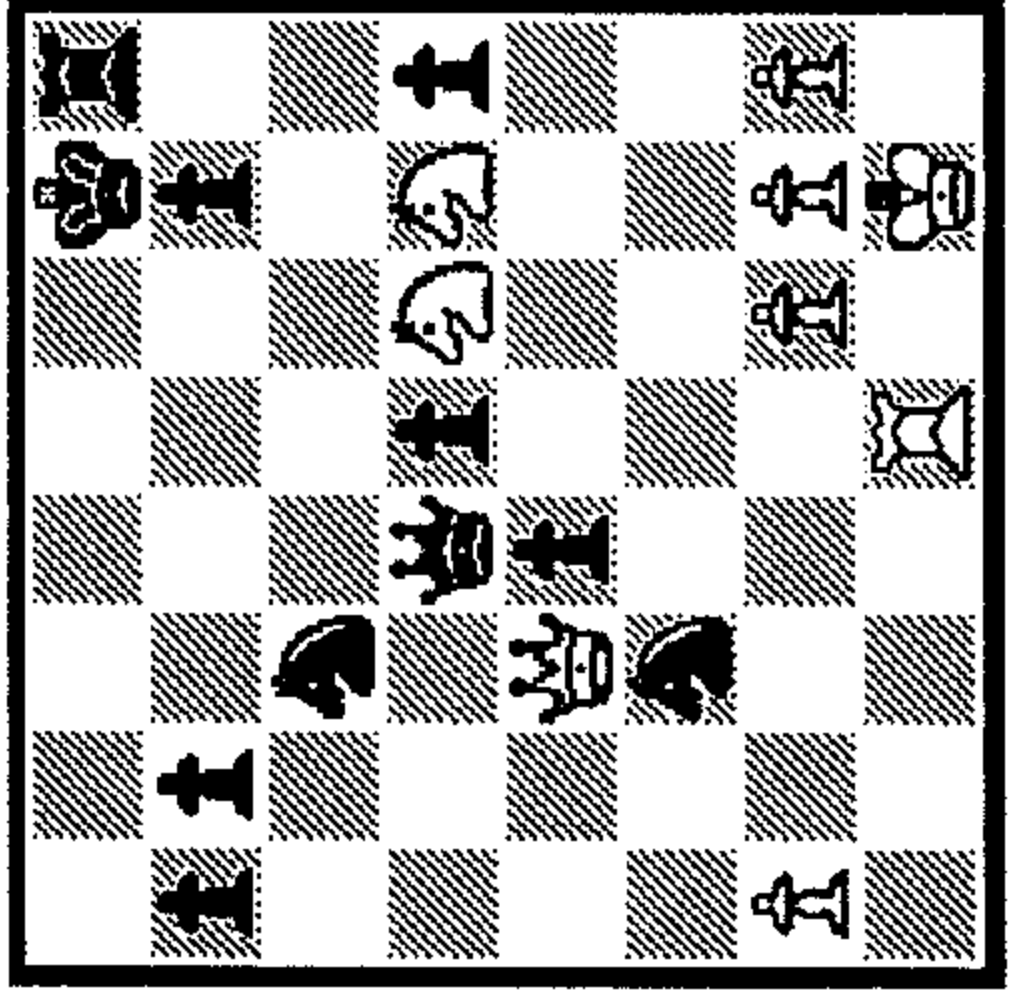
1\_   
 2\_   
 3\_



418 1...?

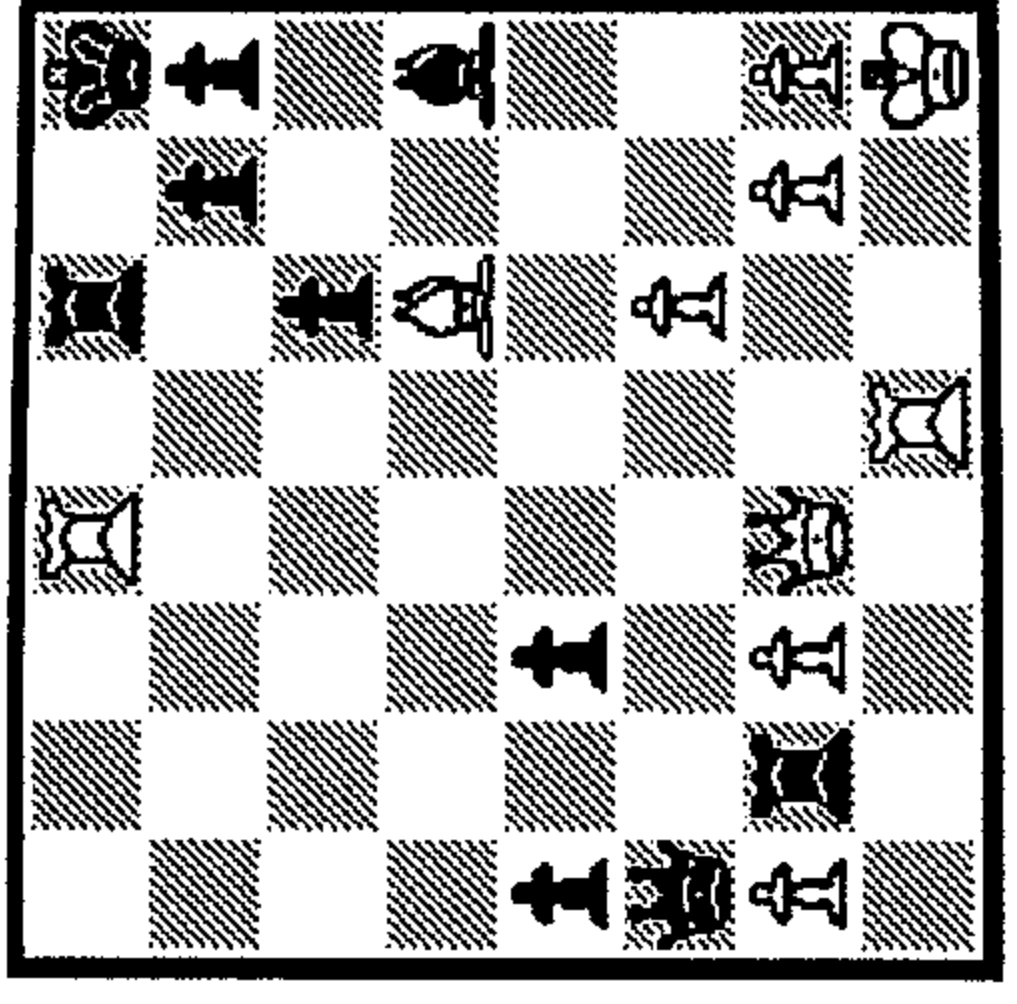


419 1.?



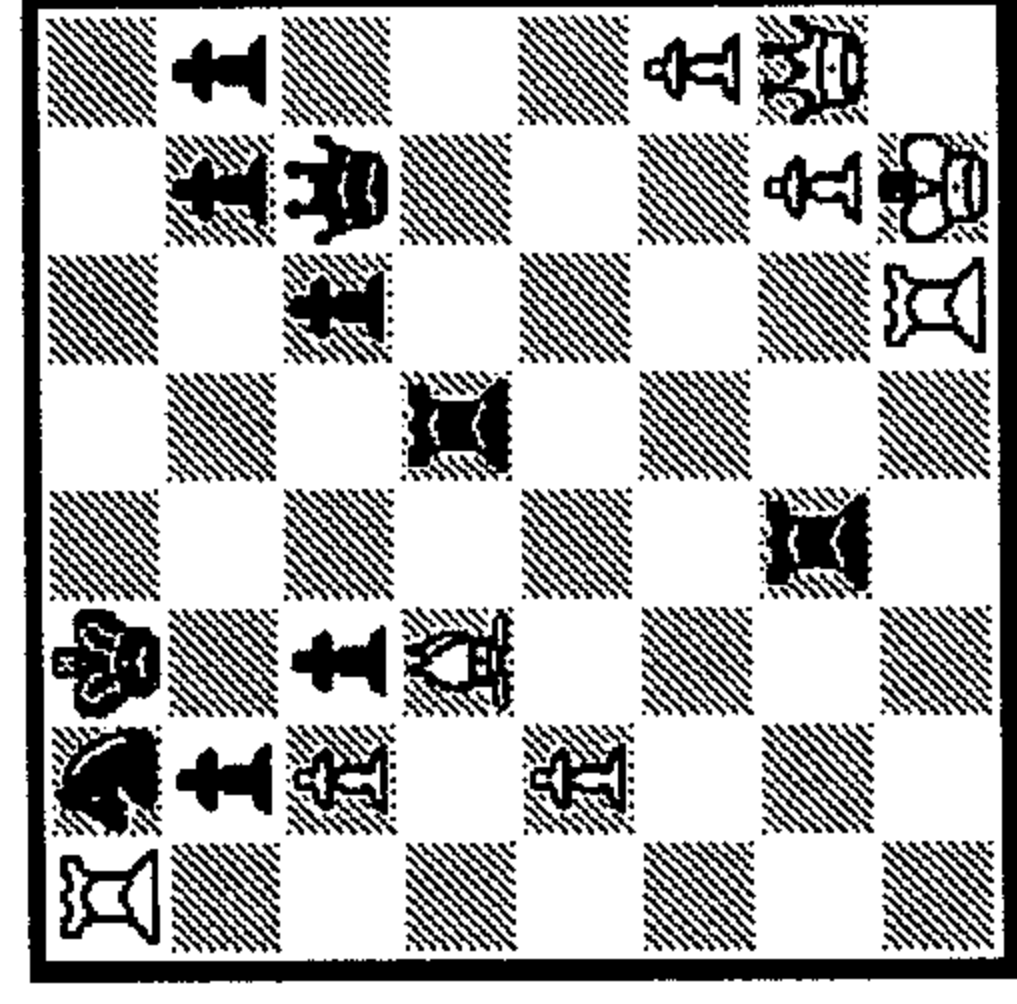
424 1.?

1\_   
 2\_   
 3\_

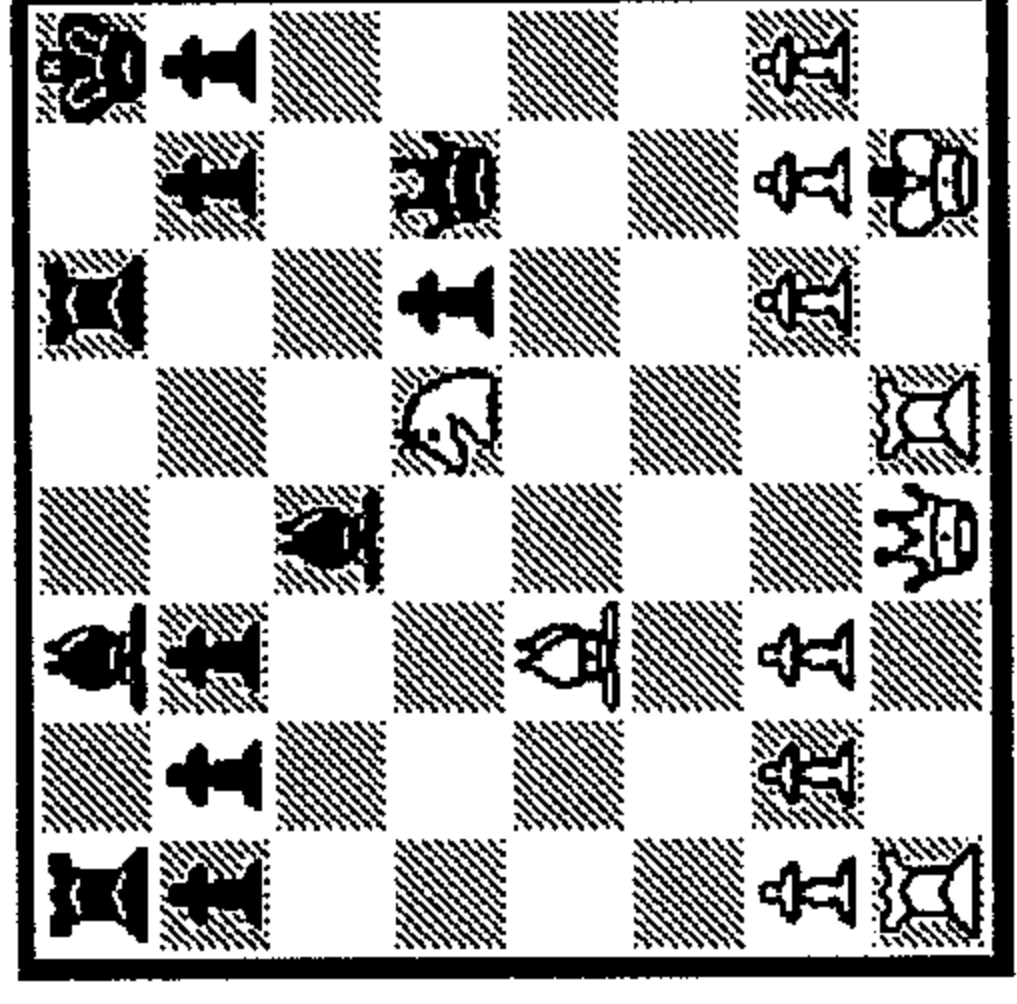


425 1.?

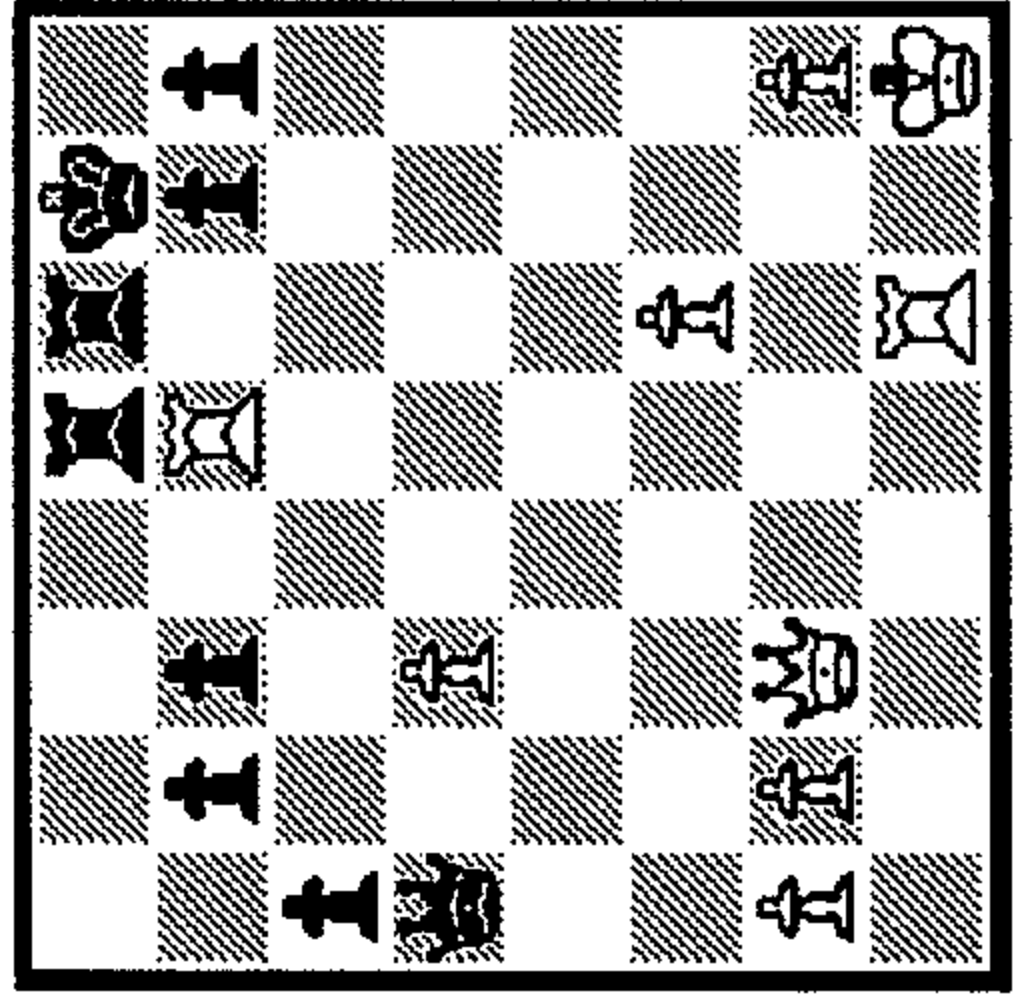
1\_   
 2\_   
 3\_



420 1.?

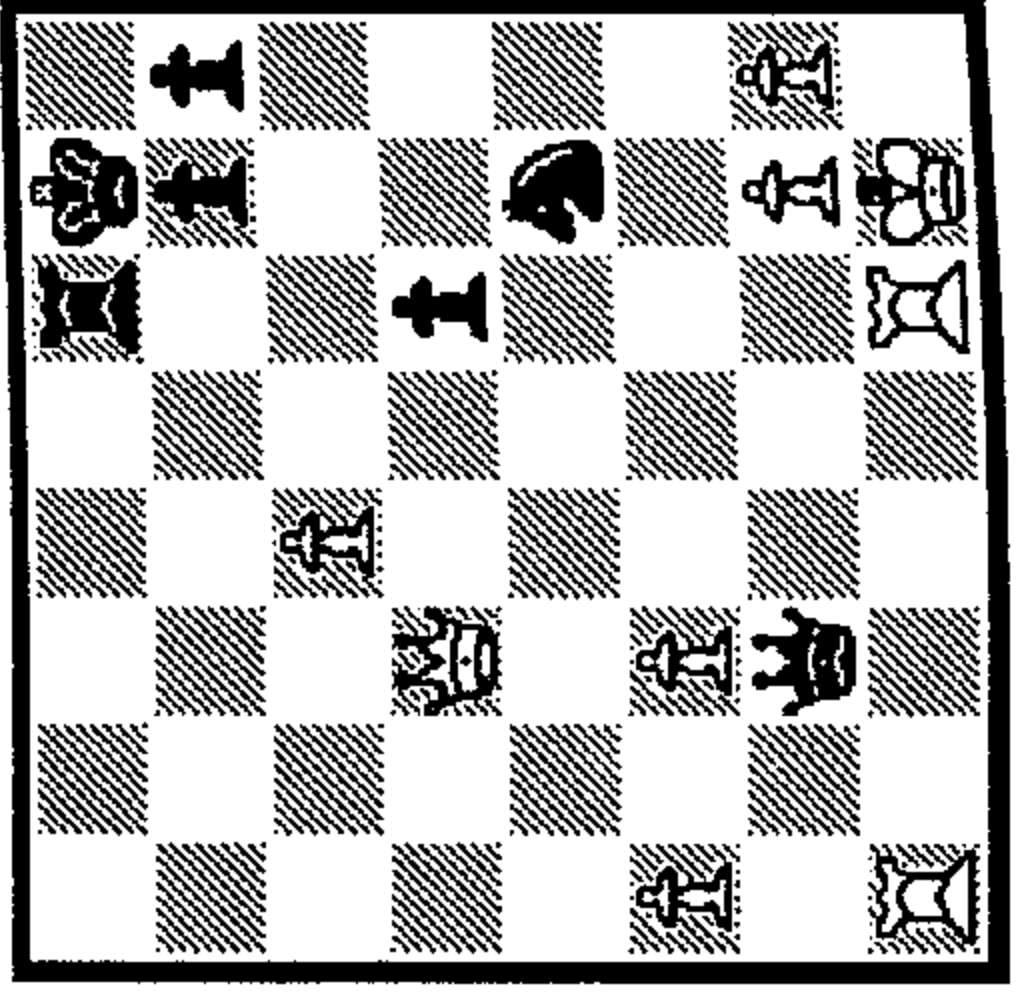


421 1.?



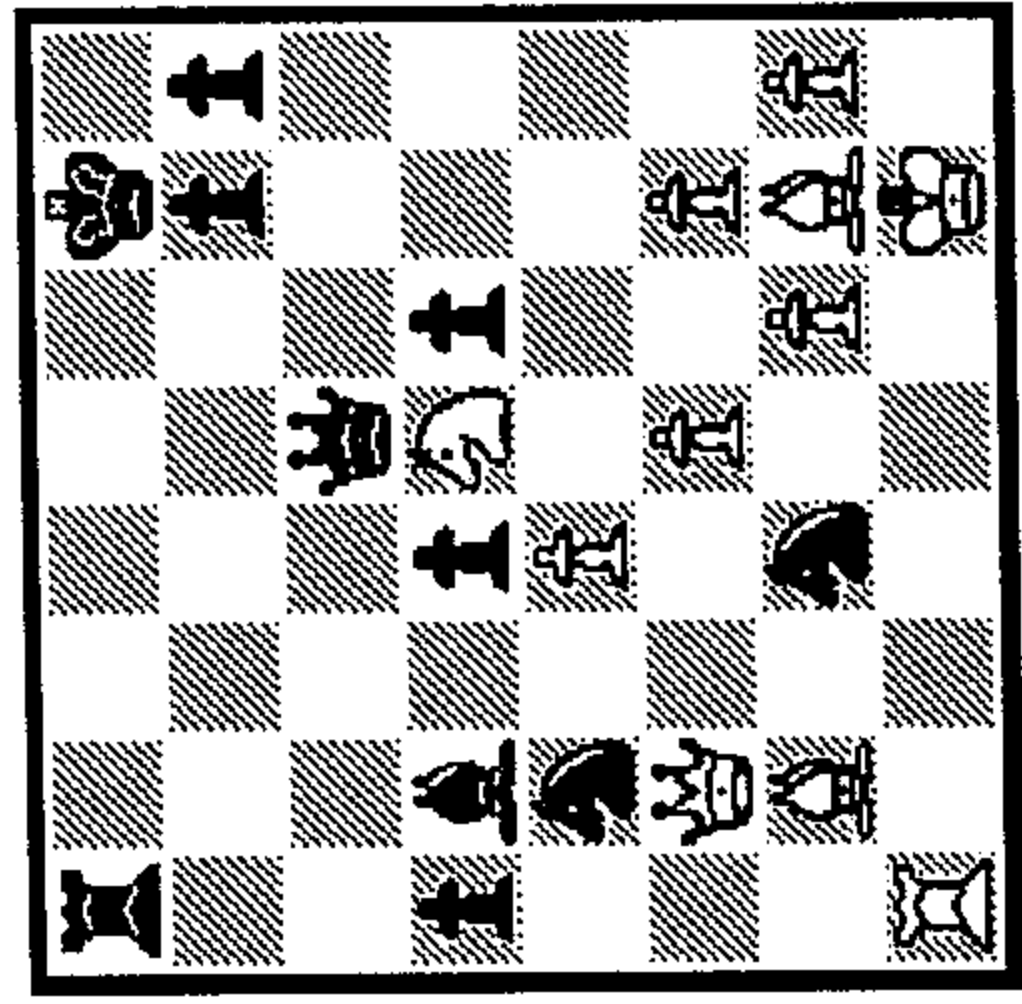
426 1.?

1\_   
 2\_   
 3\_

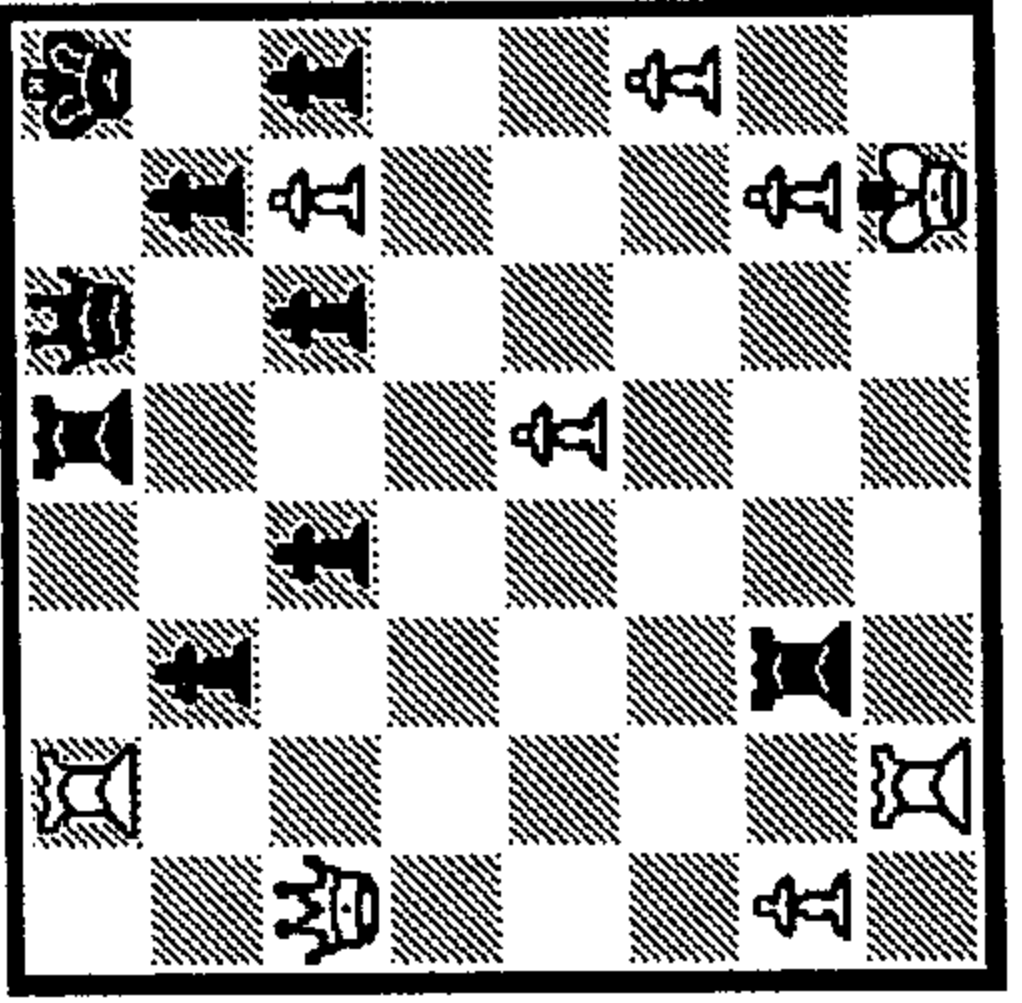


427 1.?

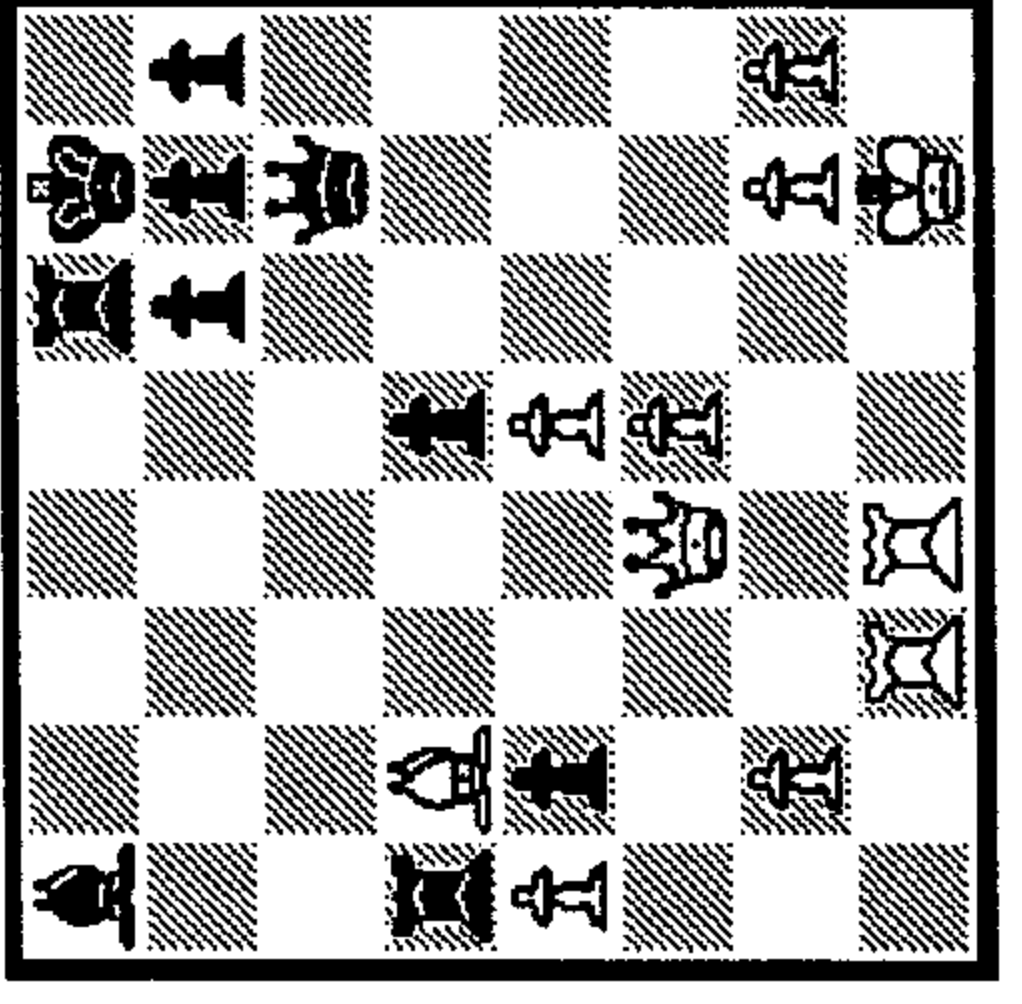
1\_   
 2\_   
 3\_



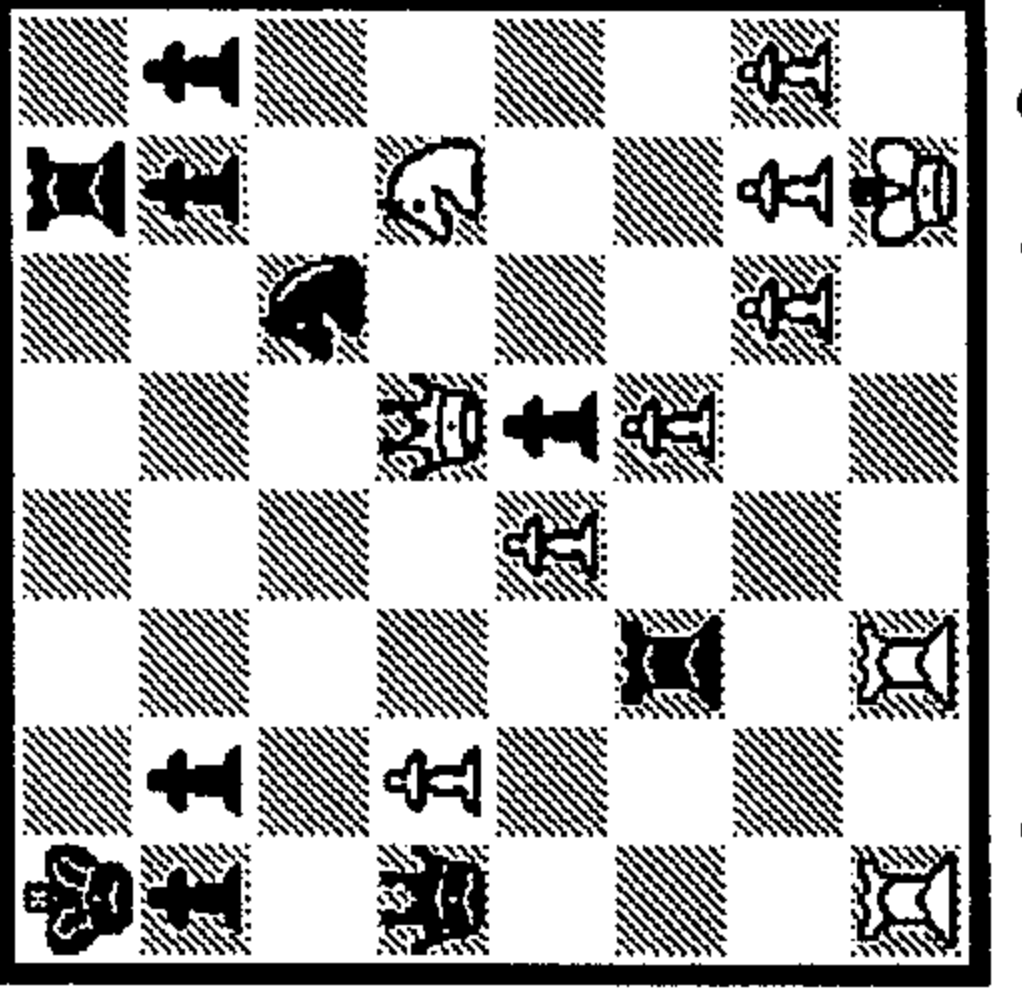
428 1.?



429 1.?

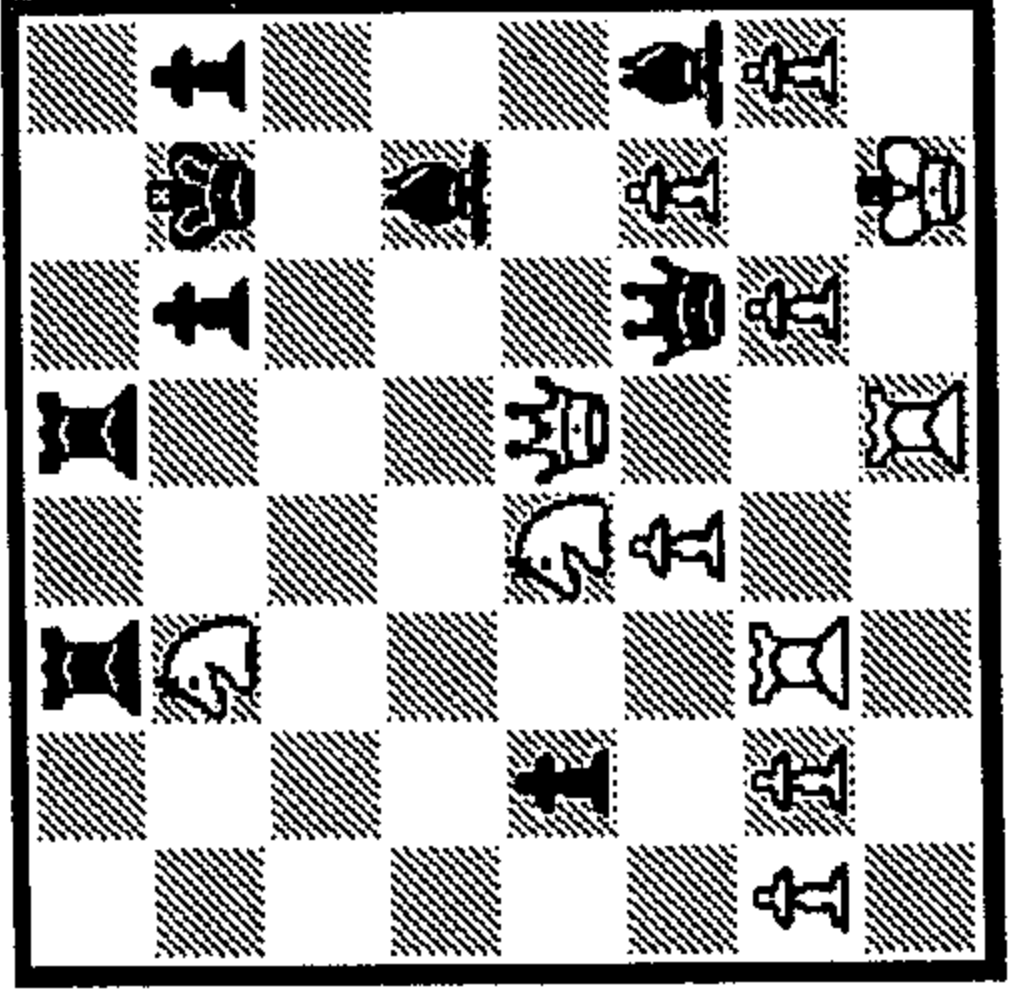


434 1.?

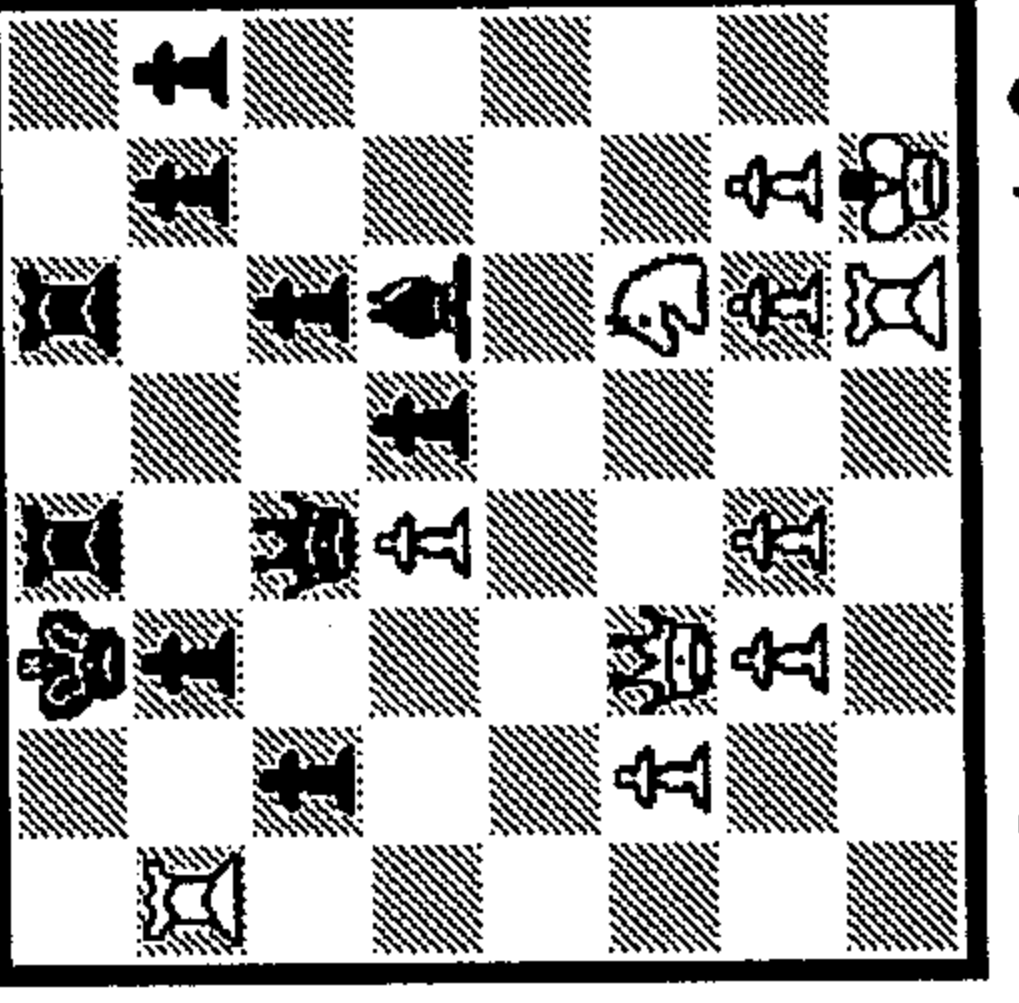


435 1...?

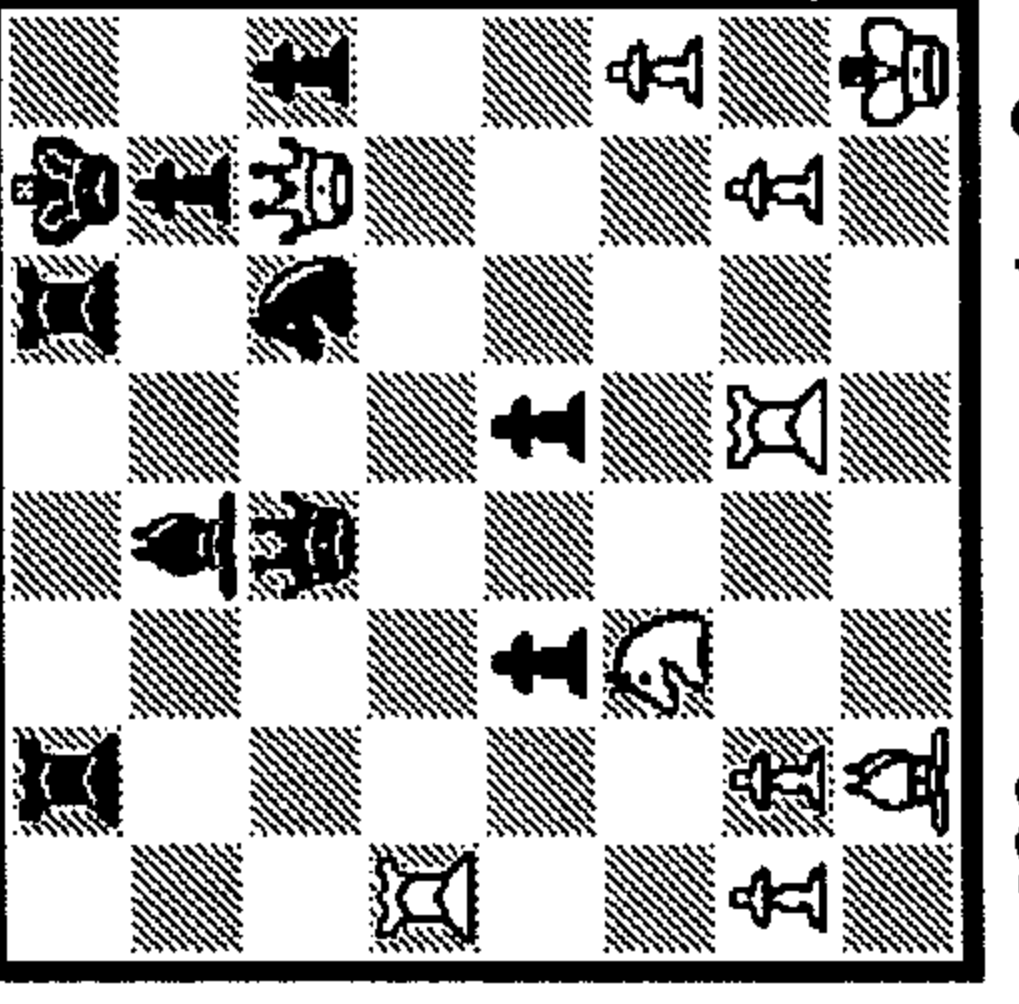
- 1. \_ \_
- 2. \_ \_
- 3. \_ \_



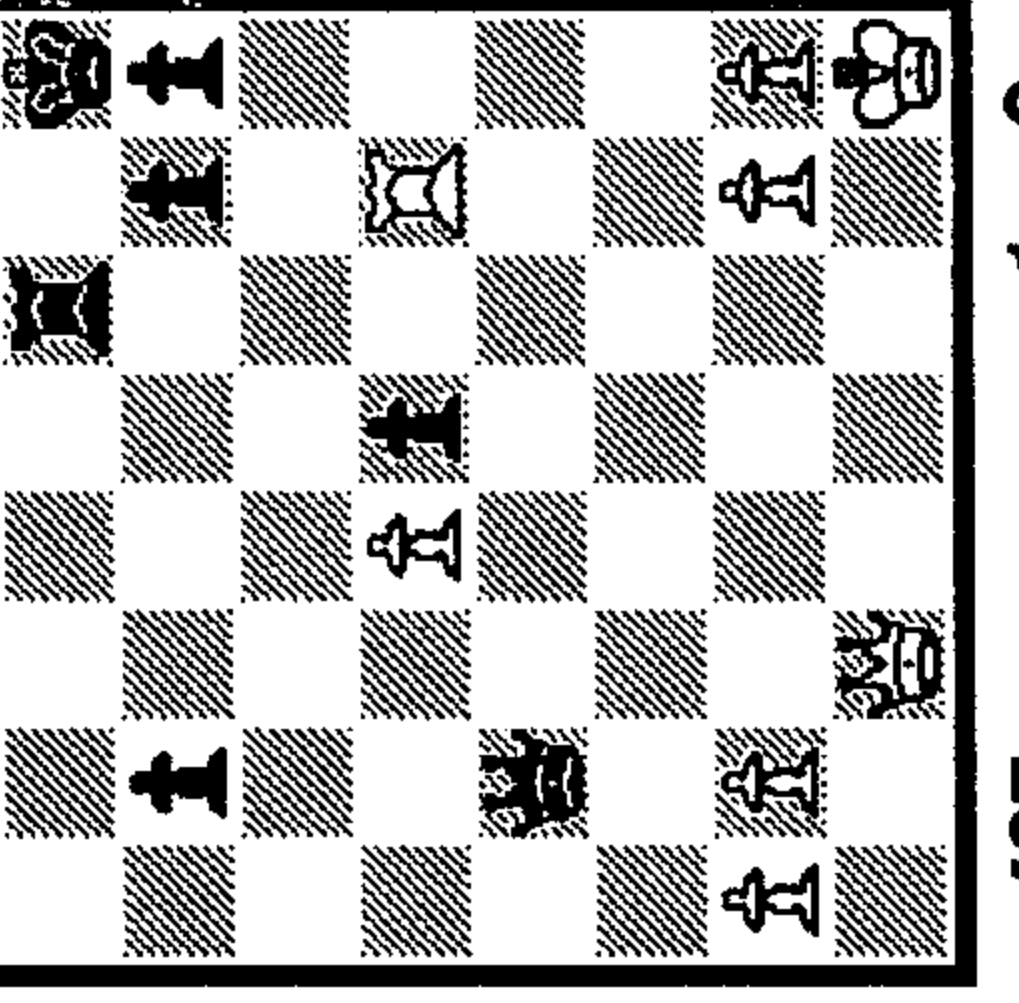
430 1...?



431 1.?

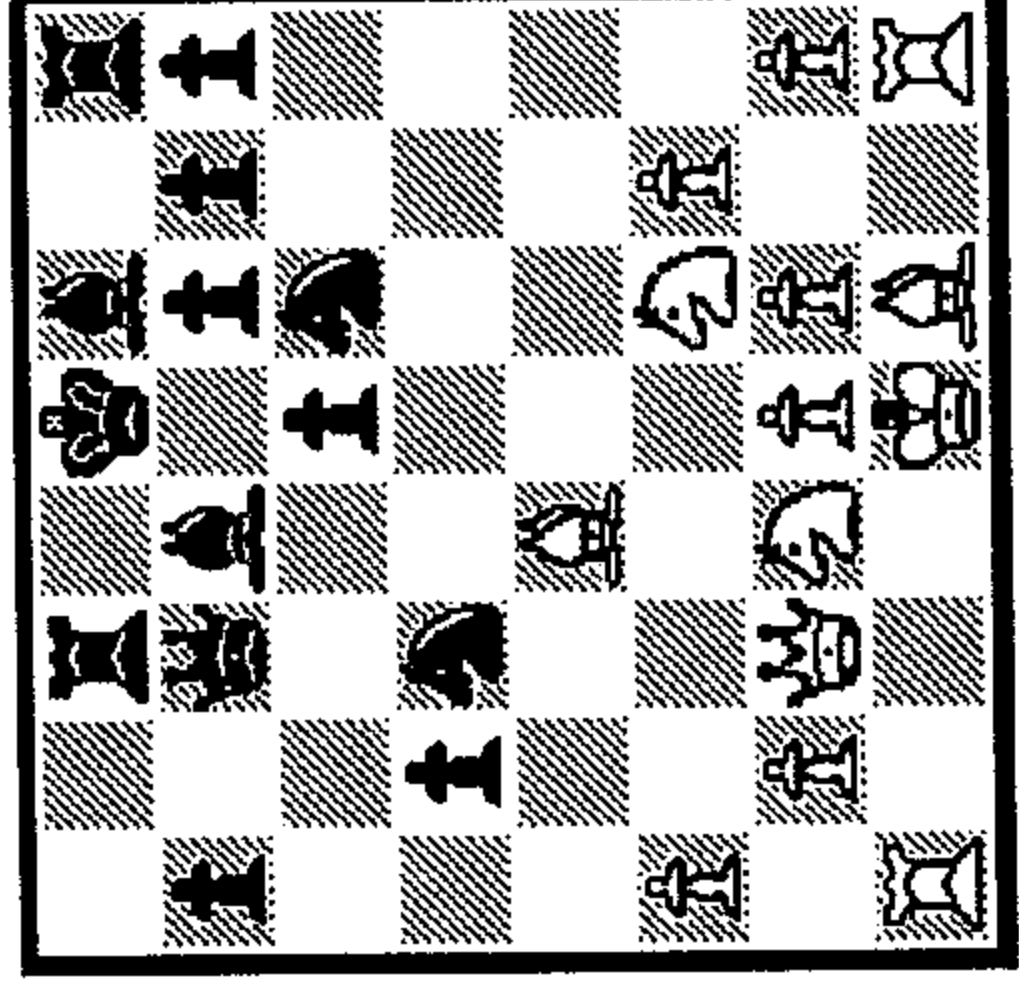


436 1...?

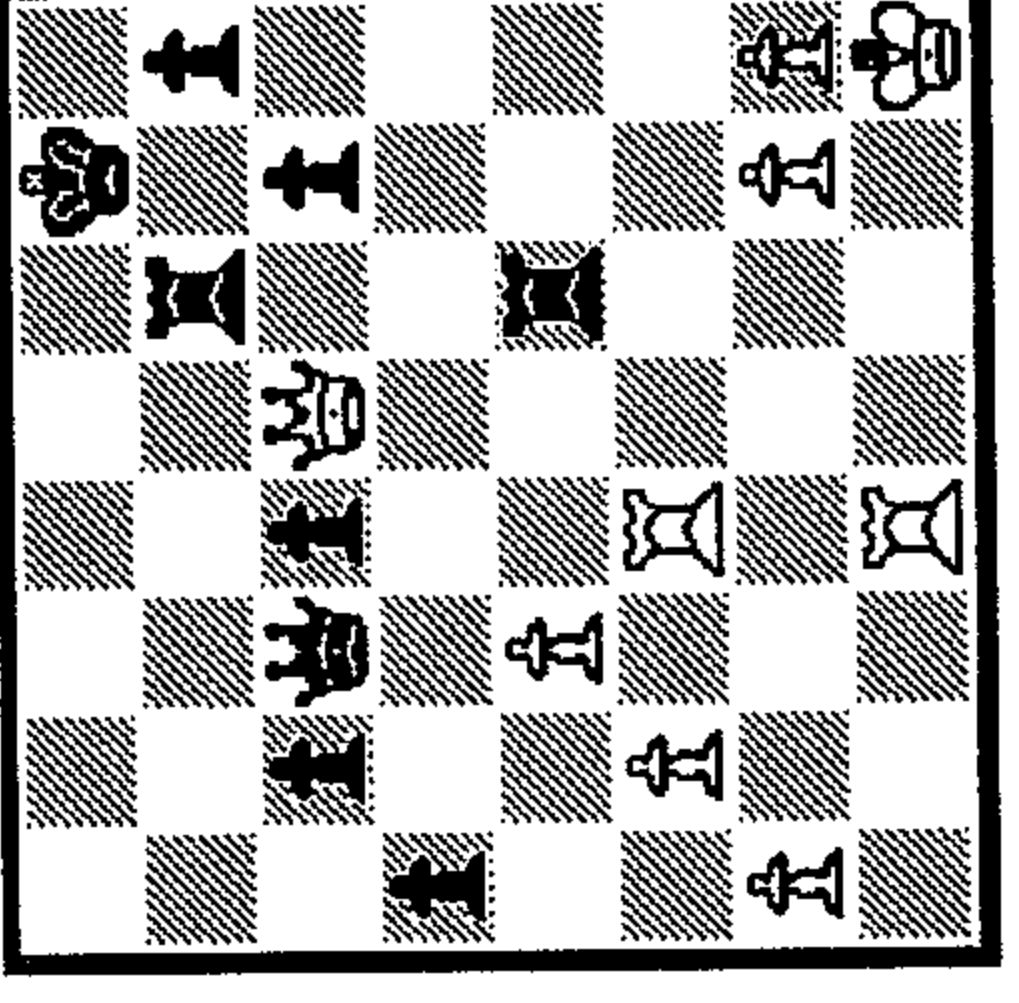


437 1...?

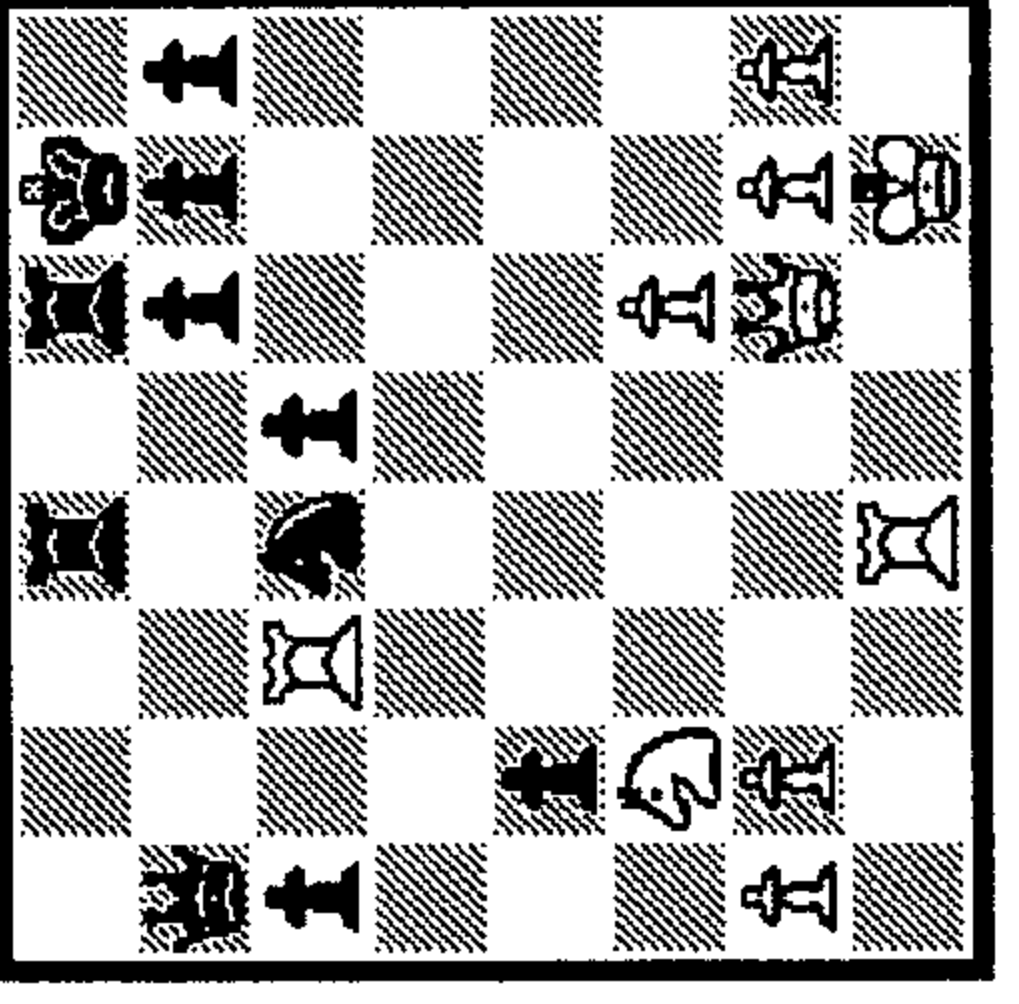
- 1. \_ \_
- 2. \_ \_
- 3. \_ \_



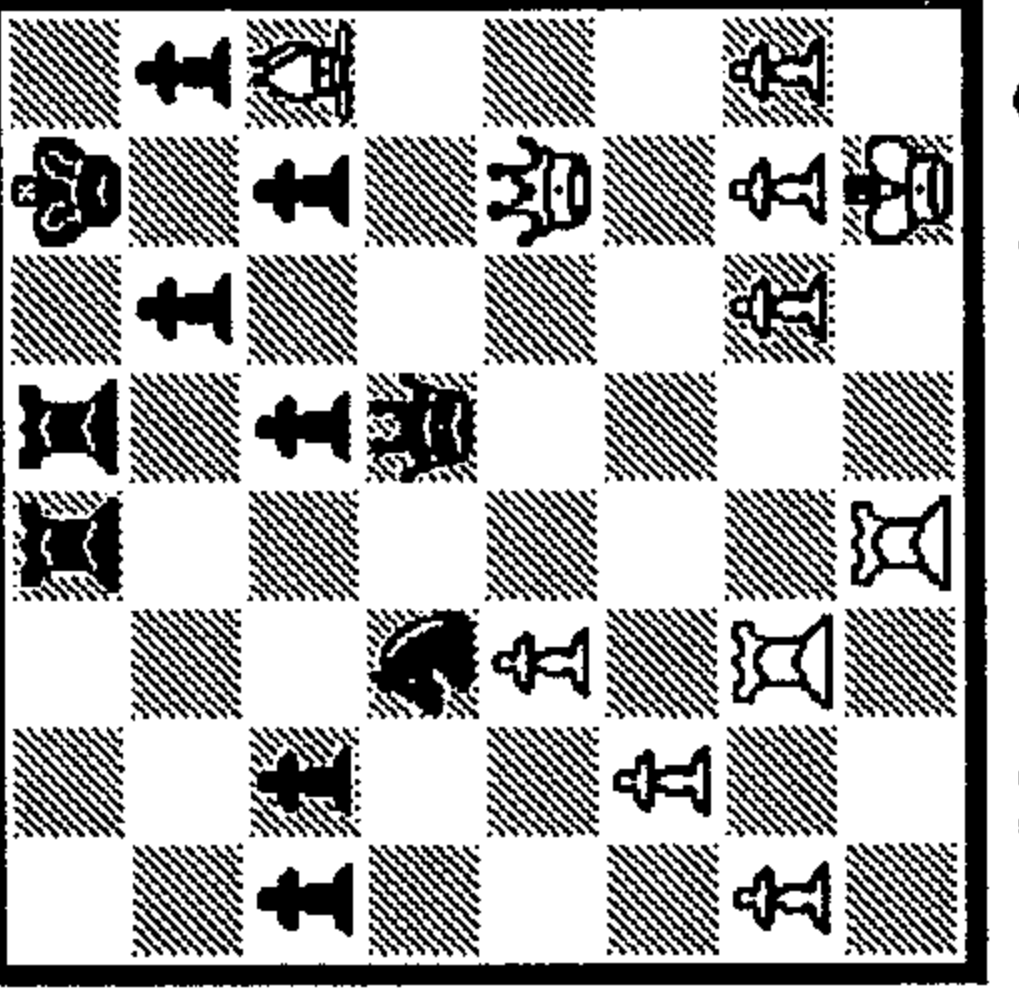
432 1...?



433 1...?



438 1...?



439 1...?

- 1. \_ \_
- 2. \_ \_
- 3. \_ \_