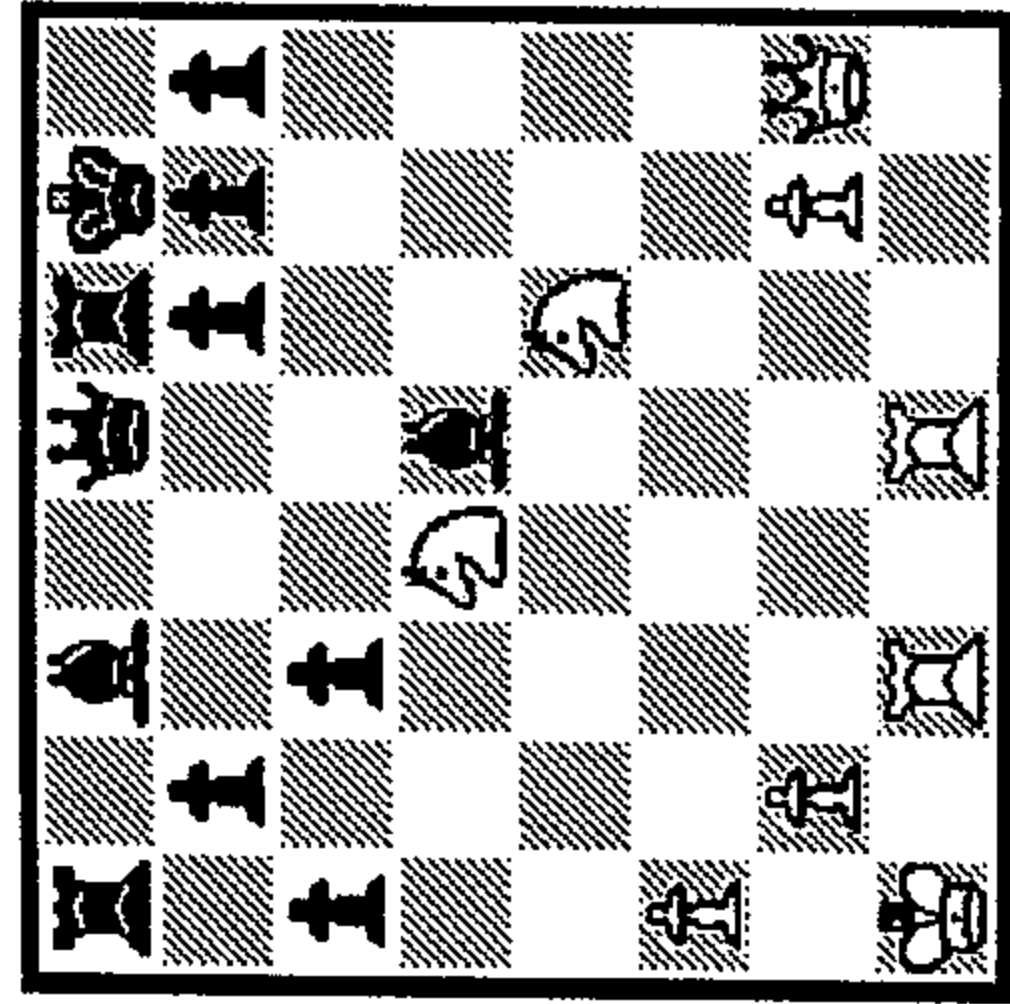


# QUEEN SACRIFICE

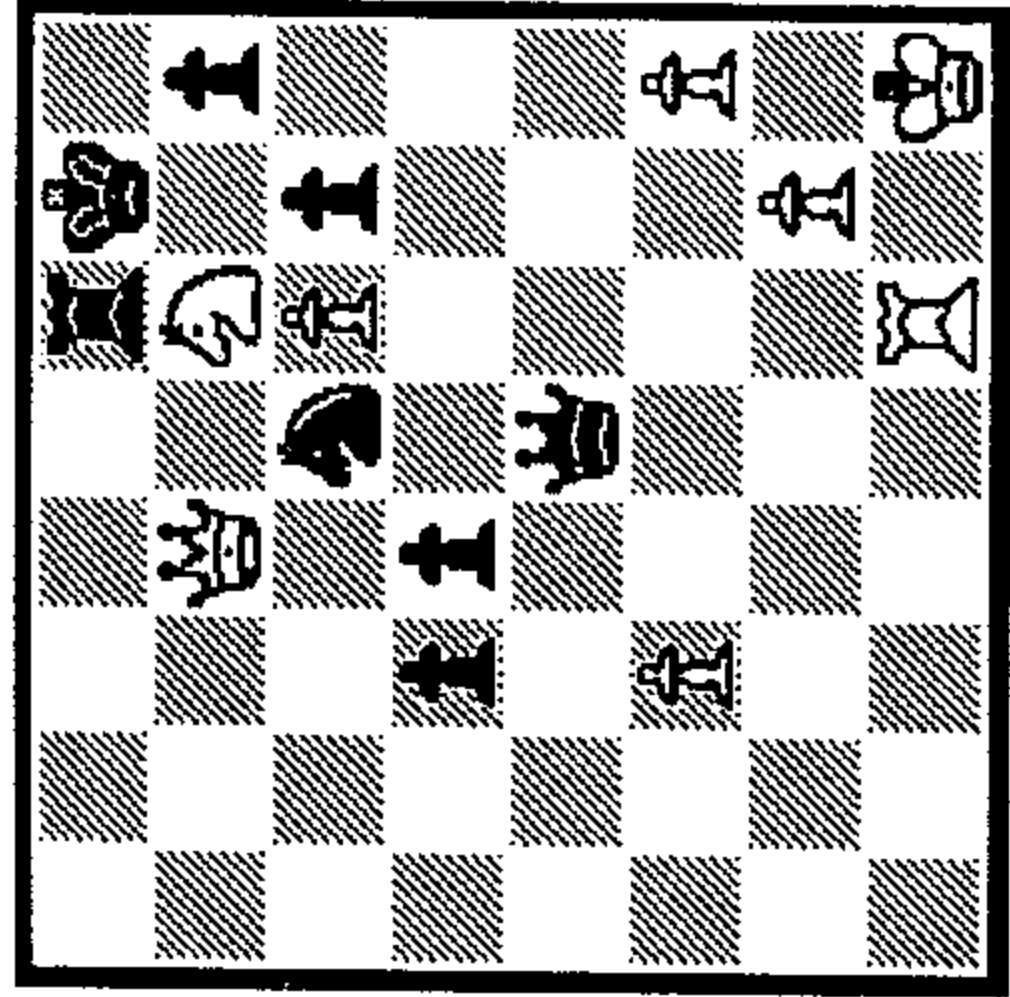
Surely every chessplayer has dreamed of that classic moment in chess - the Queen sacrifice. Giving up the strongest piece on the board in a sweeping and often totally unexpected fashion is associated with some of the most impressive victories ever recorded. Usually the Queen sacrifice occurs as the crowning effort of a well conducted Kingside attack. There are also, however, examples of Queen sacrifices which allow a pawn to promote or which are a prelude to a win of enemy pieces in excess of the value of the Queen. In this last case it may be argued that it isn't really a sacrifice if more material is gained in return. Nonetheless, parting with the most powerful attacking piece in an unexpected manner is an esthetically pleasing conception.



62

1.?

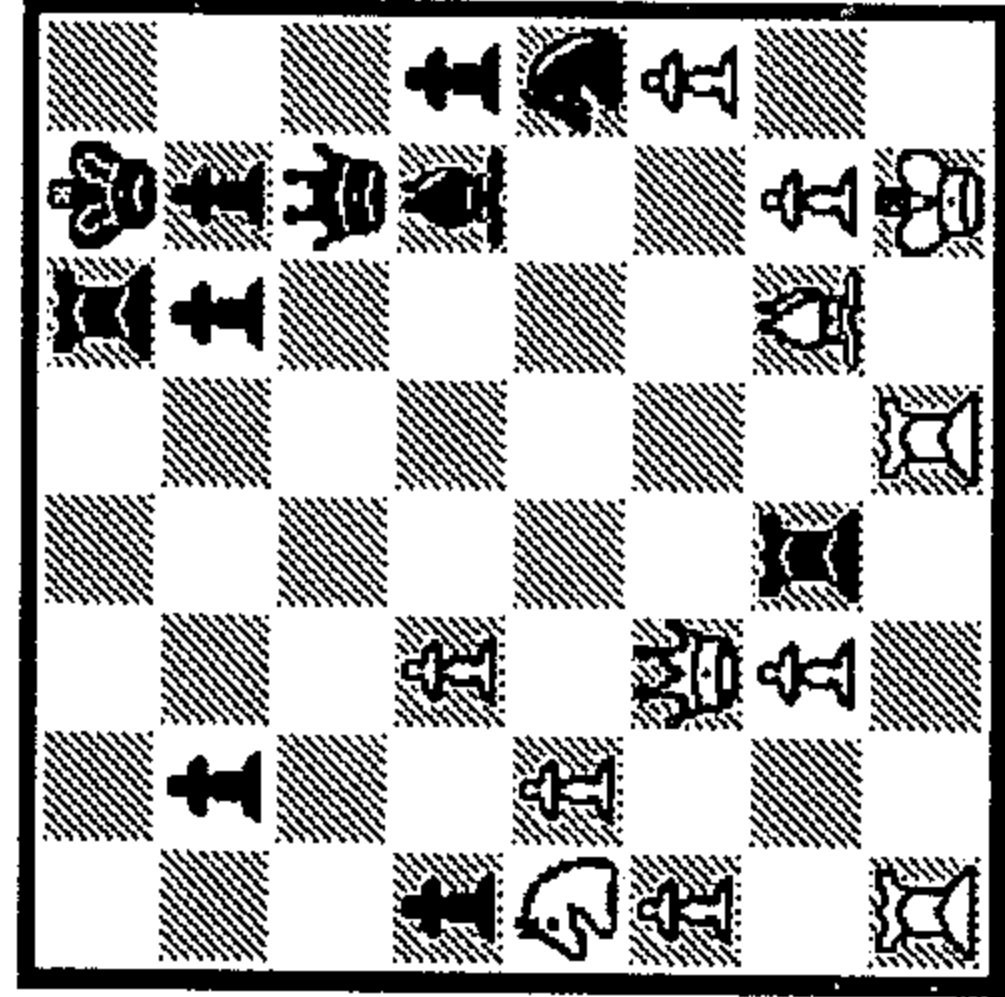
- 1. \_
- 2. \_
- 3. \_



61

1.?

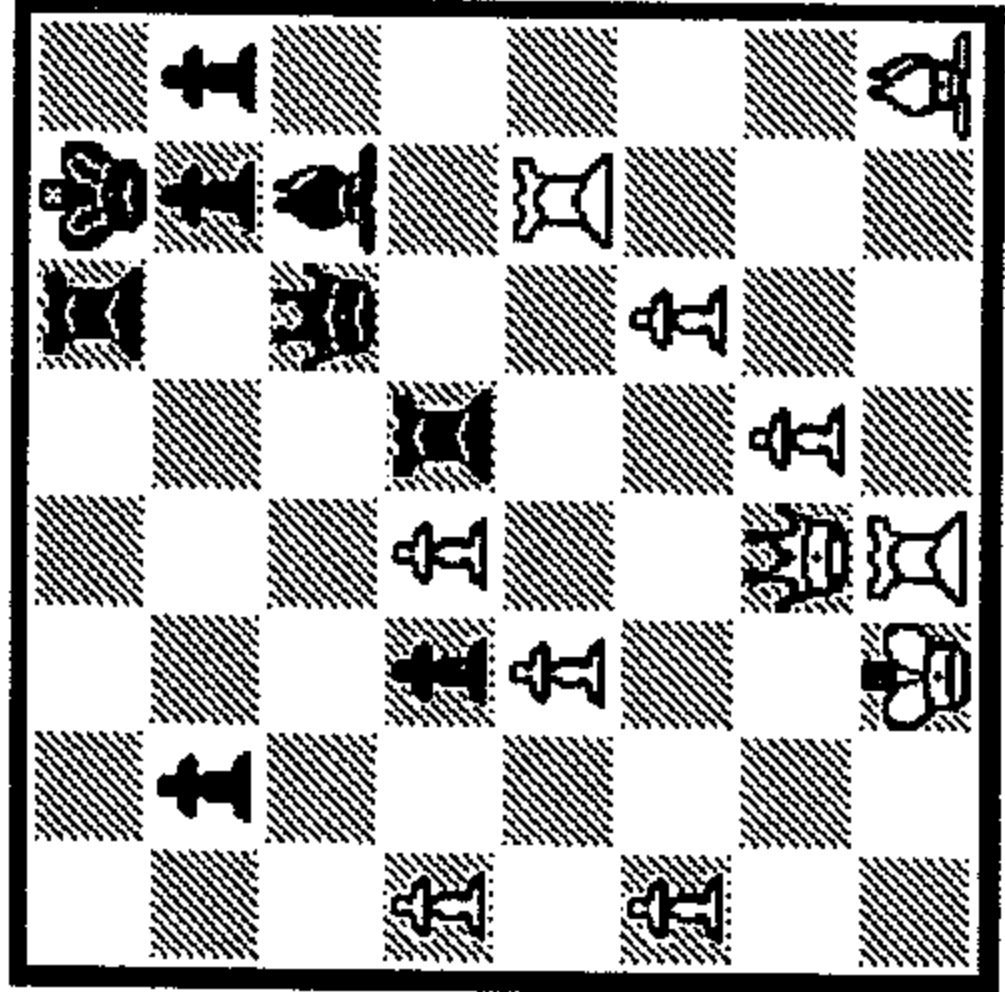
- 1. \_
- 2. \_
- 3. \_



64

1...?

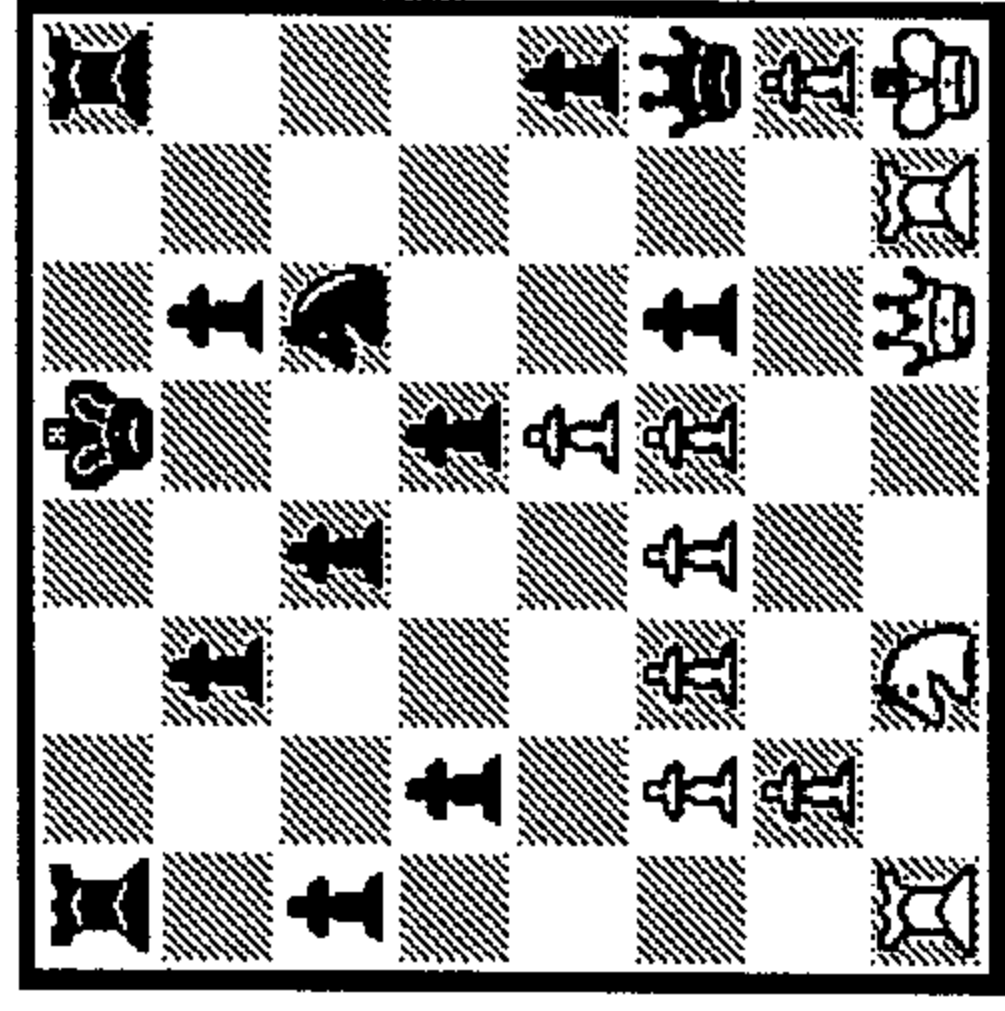
- 1. \_
- 2. \_
- 3. \_



63

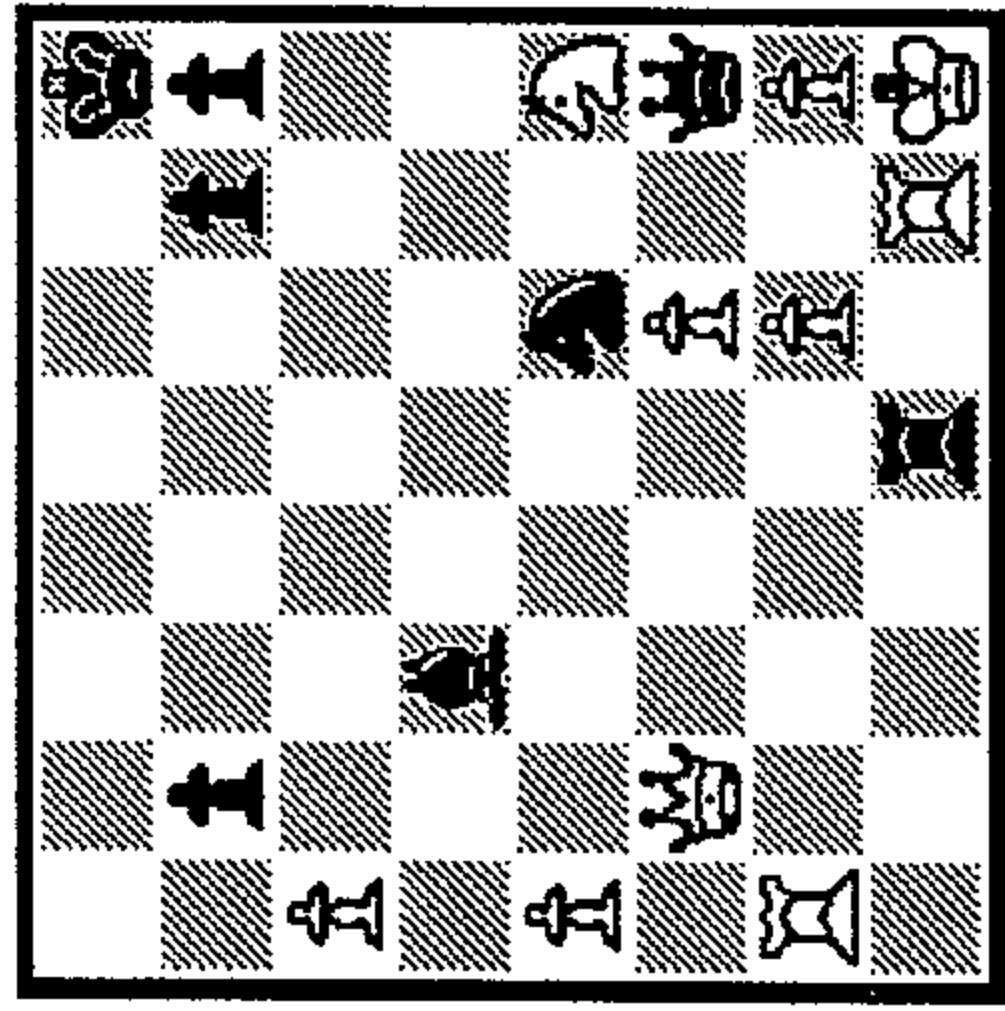
1...?

- 1. \_
- 2. \_
- 3. \_



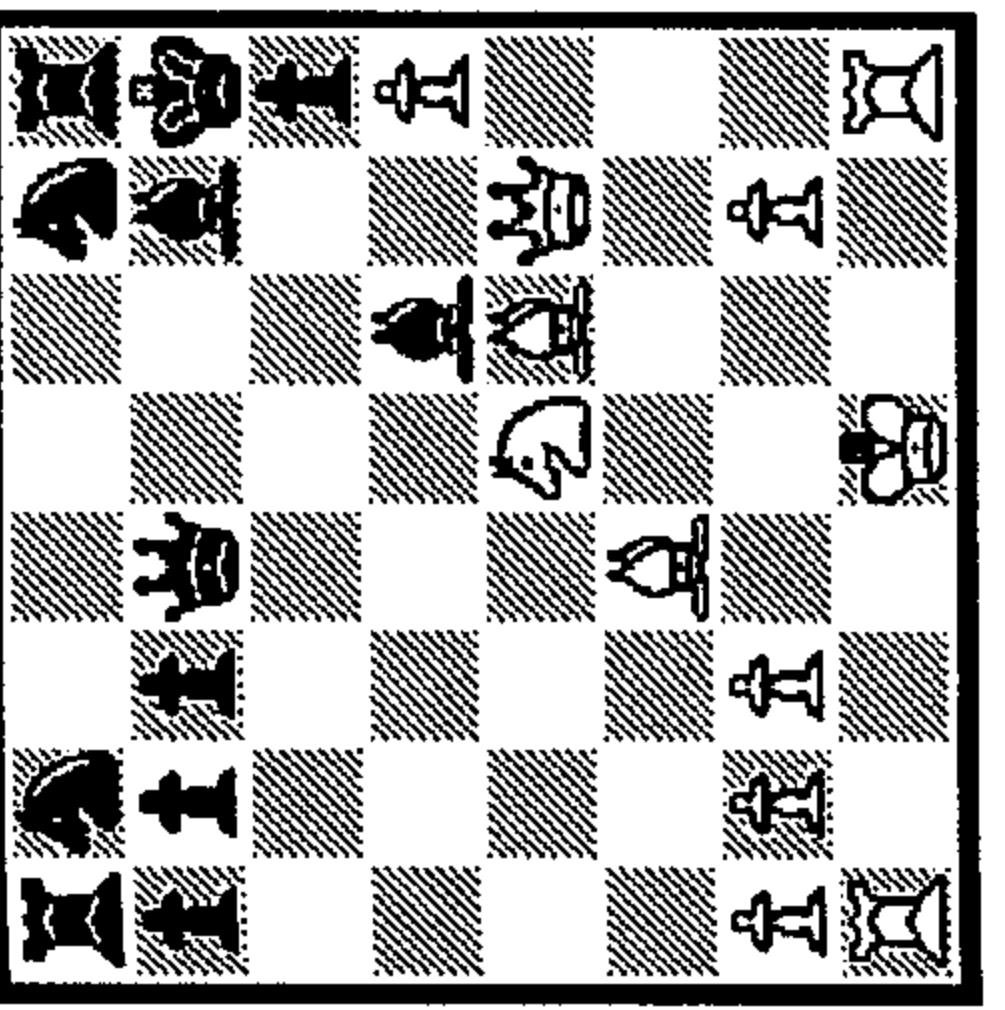
65 1...?

- 1\_
- 2\_
- 3\_



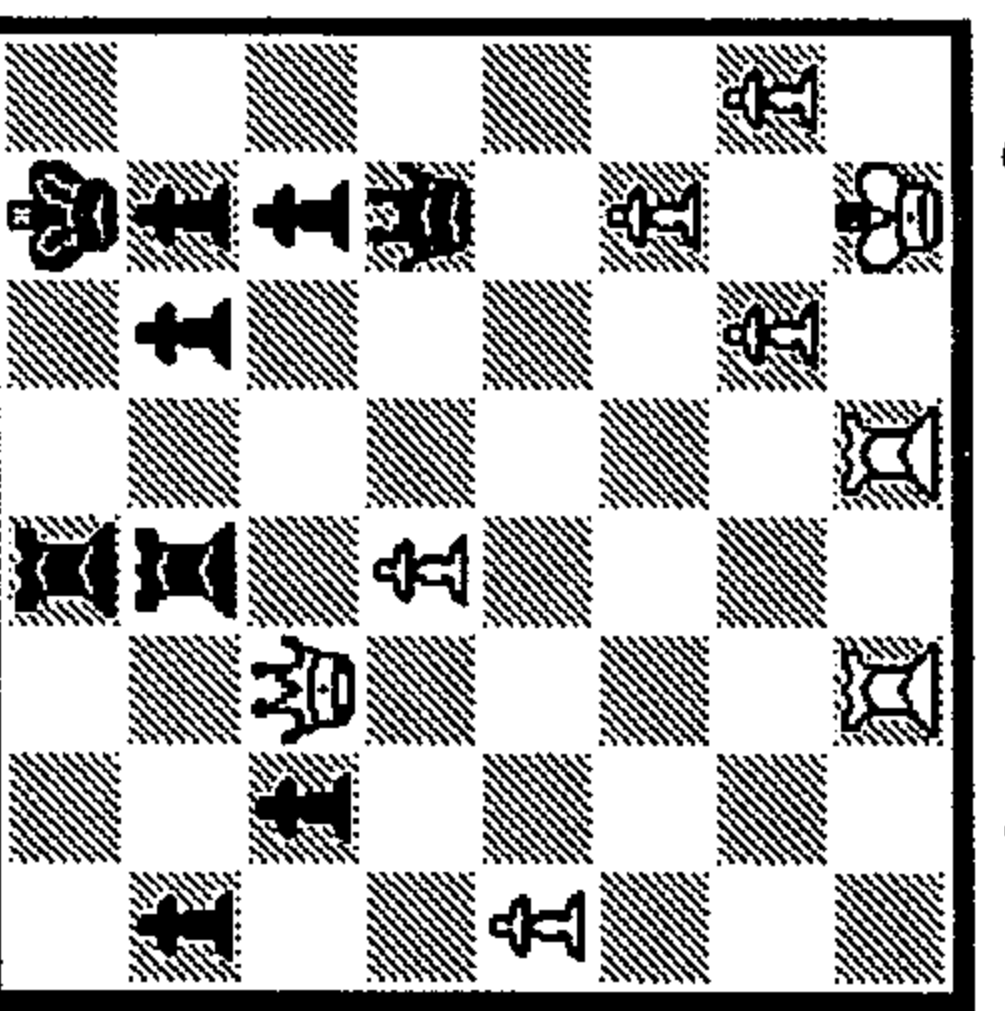
66 1...?

- 1\_
- 2\_
- 3\_



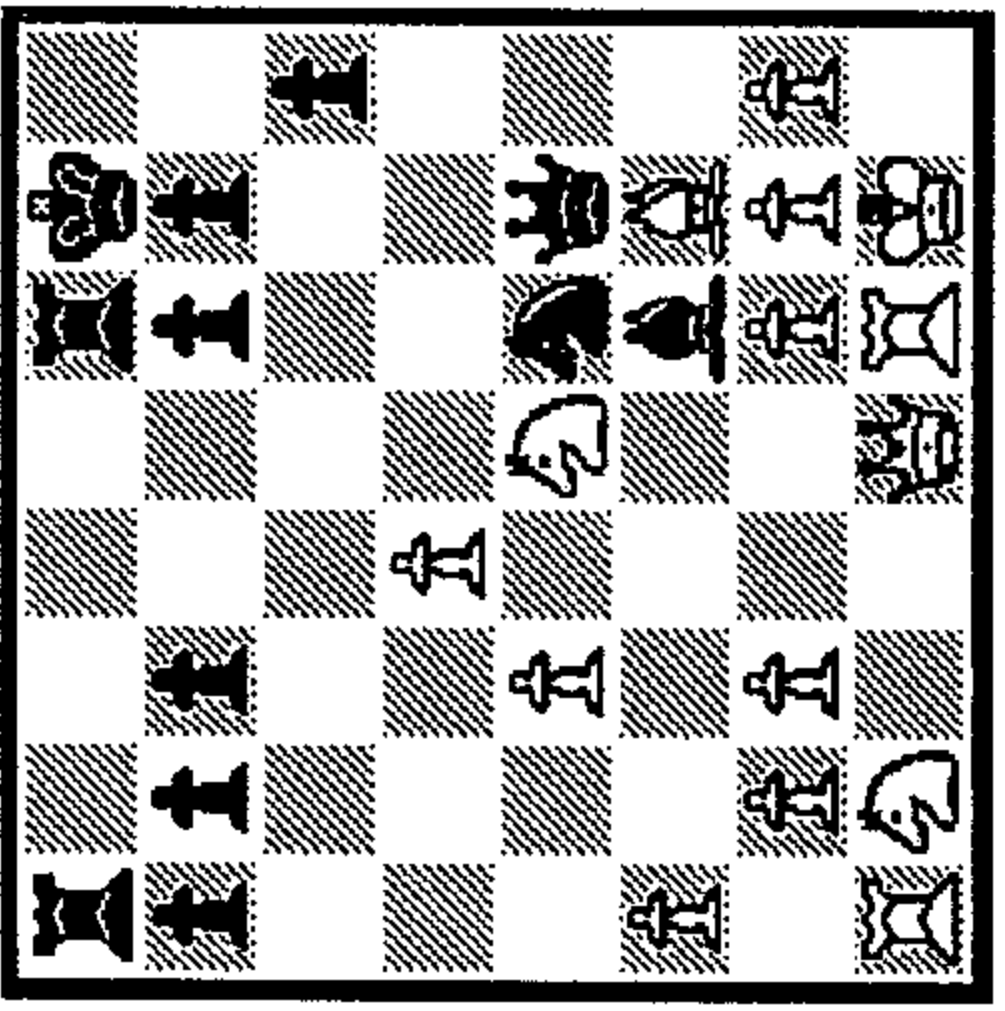
71 1.?

- 1\_
- 2\_
- 3\_



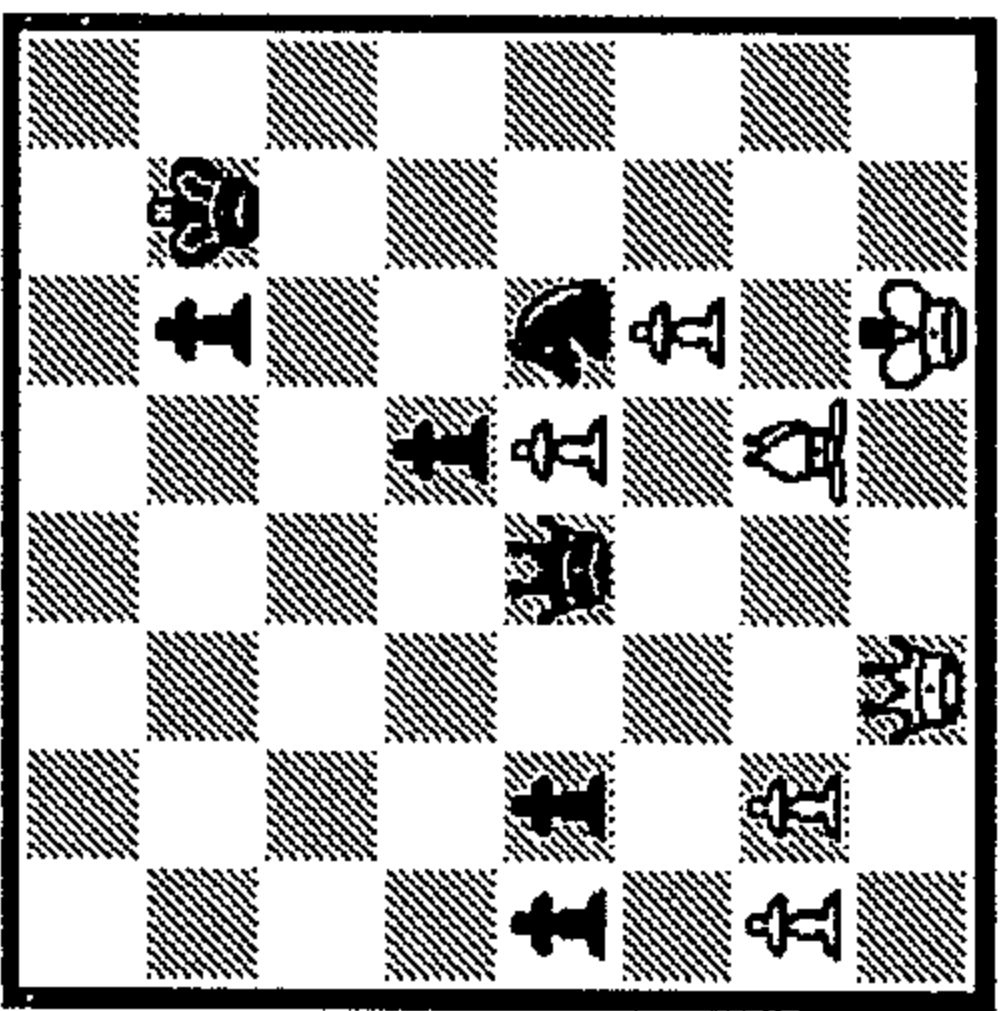
72 1.?

- 1\_
- 2\_
- 3\_



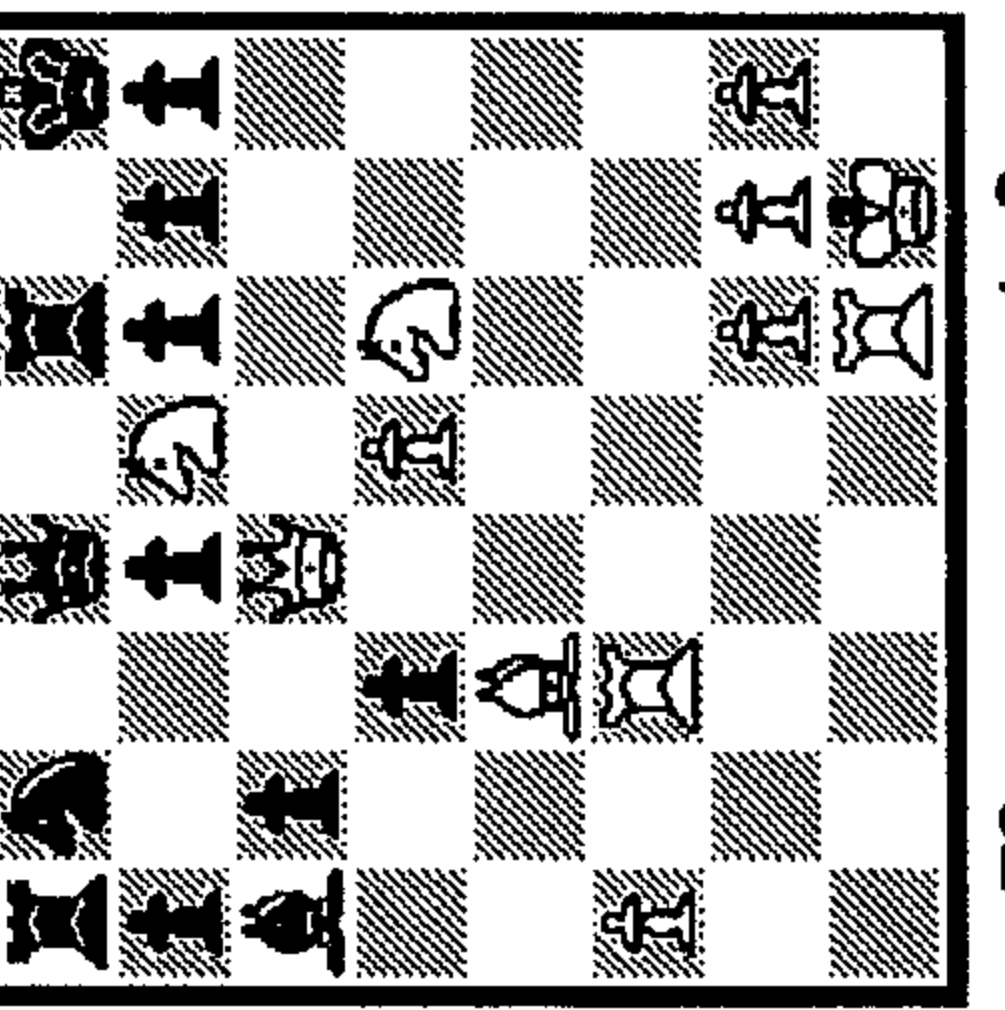
67 1...?

- 1\_
- 2\_
- 3\_



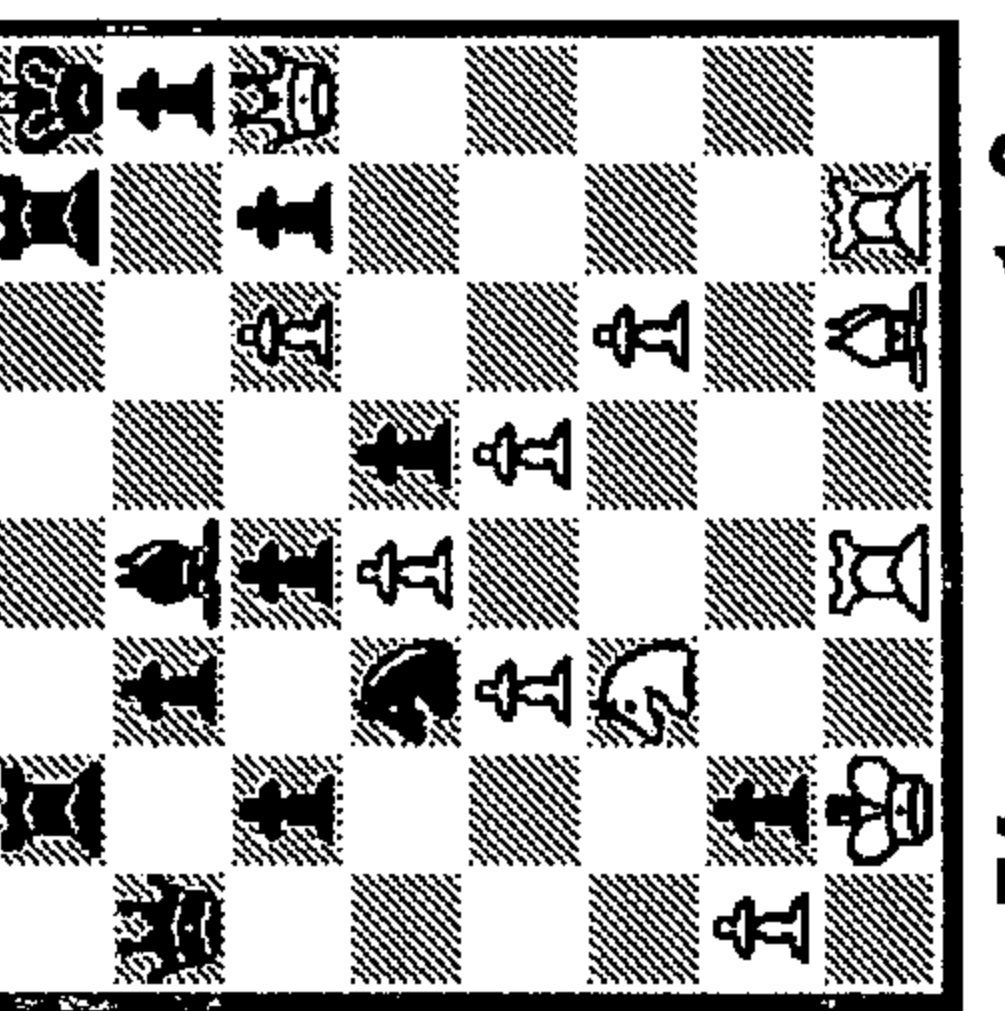
68 1...?

- 1\_
- 2\_
- 3\_



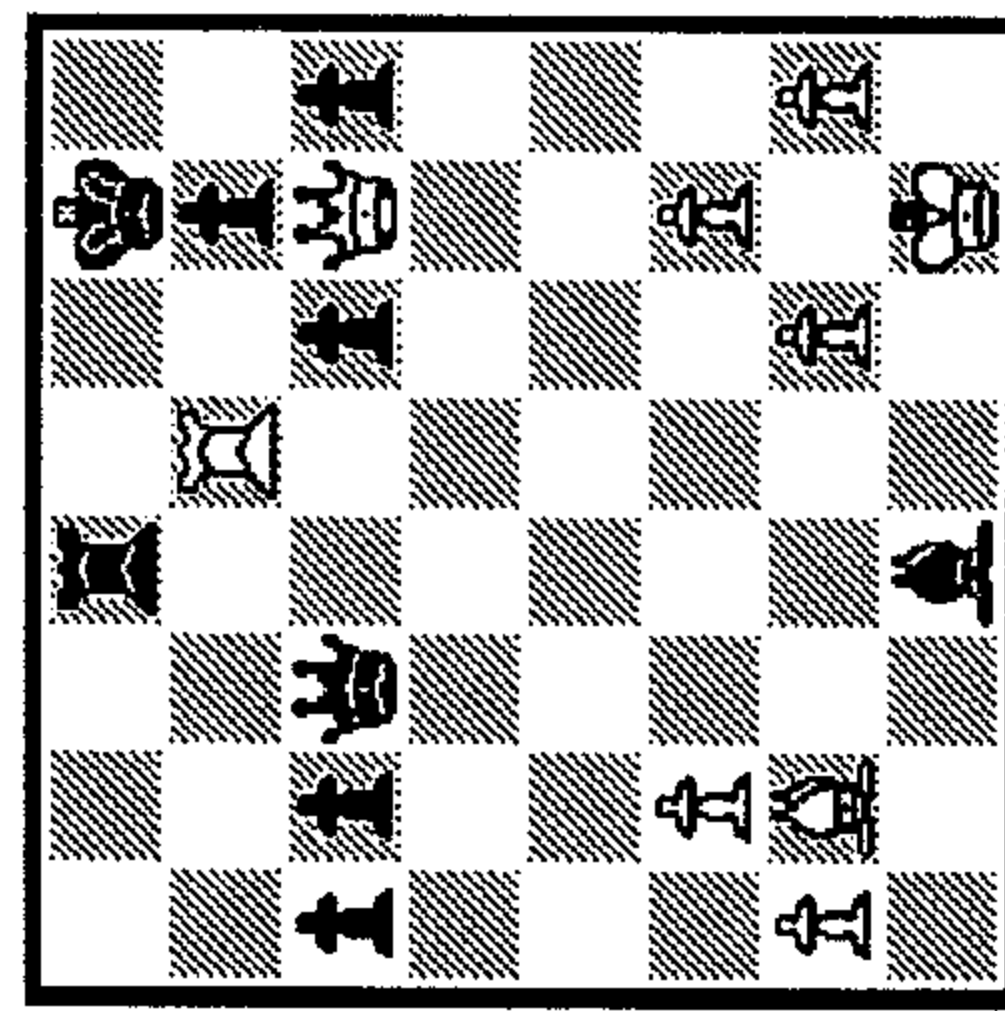
73 1.?

- 1\_
- 2\_
- 3\_



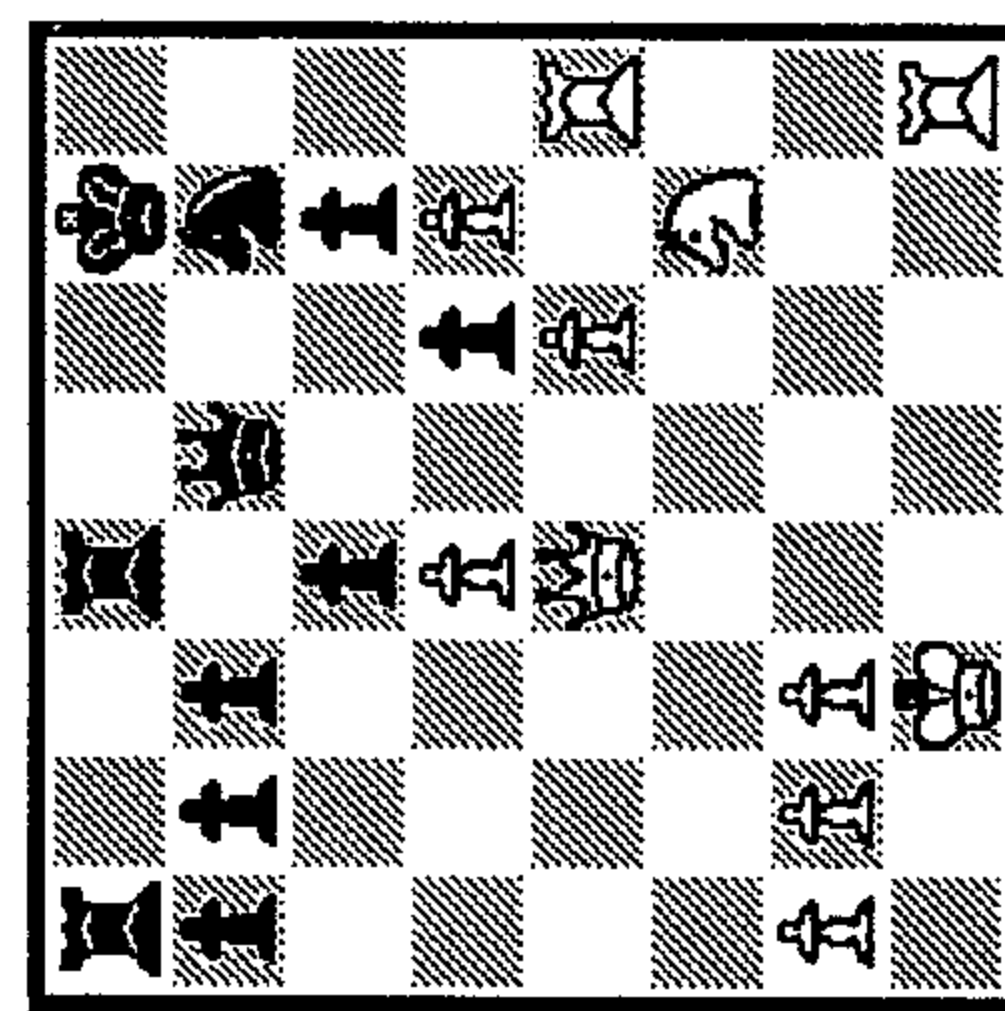
74 1.?

- 1\_
- 2\_
- 3\_



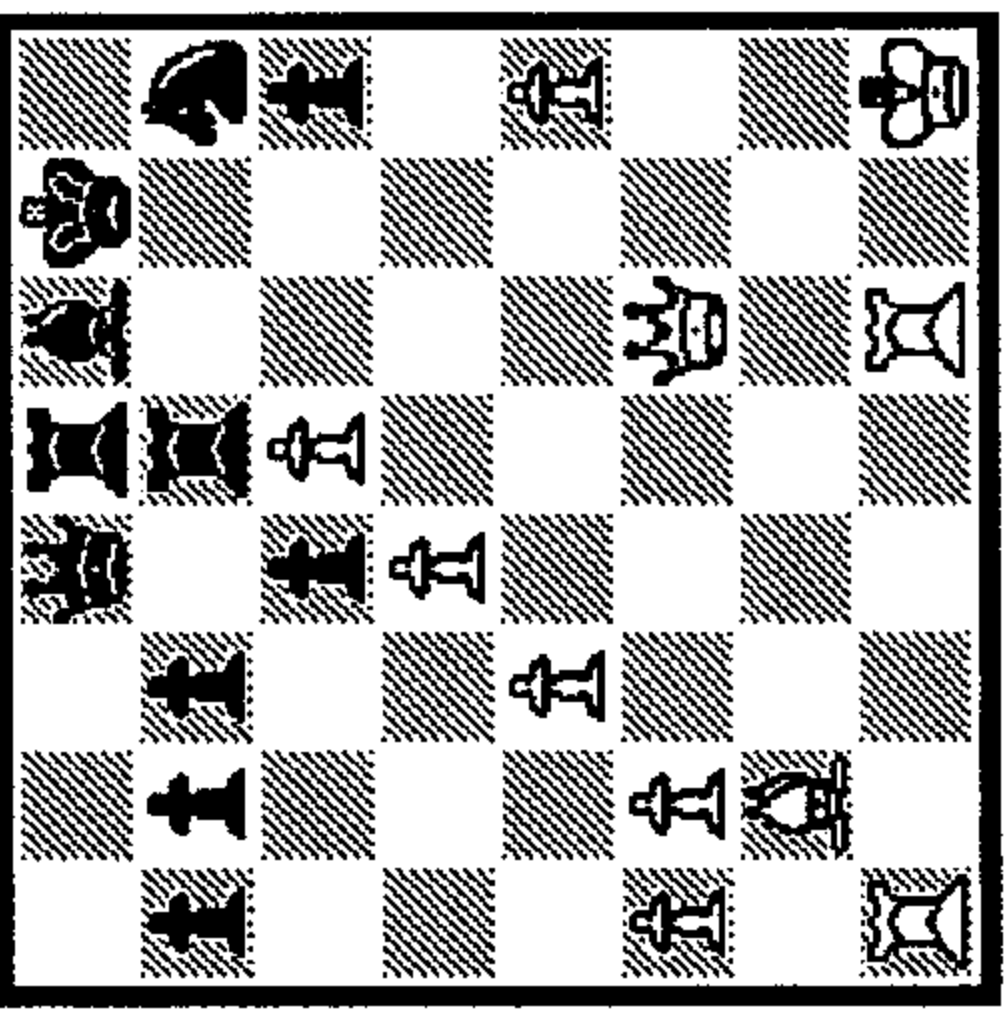
69 1...?

- 1\_
- 2\_
- 3\_



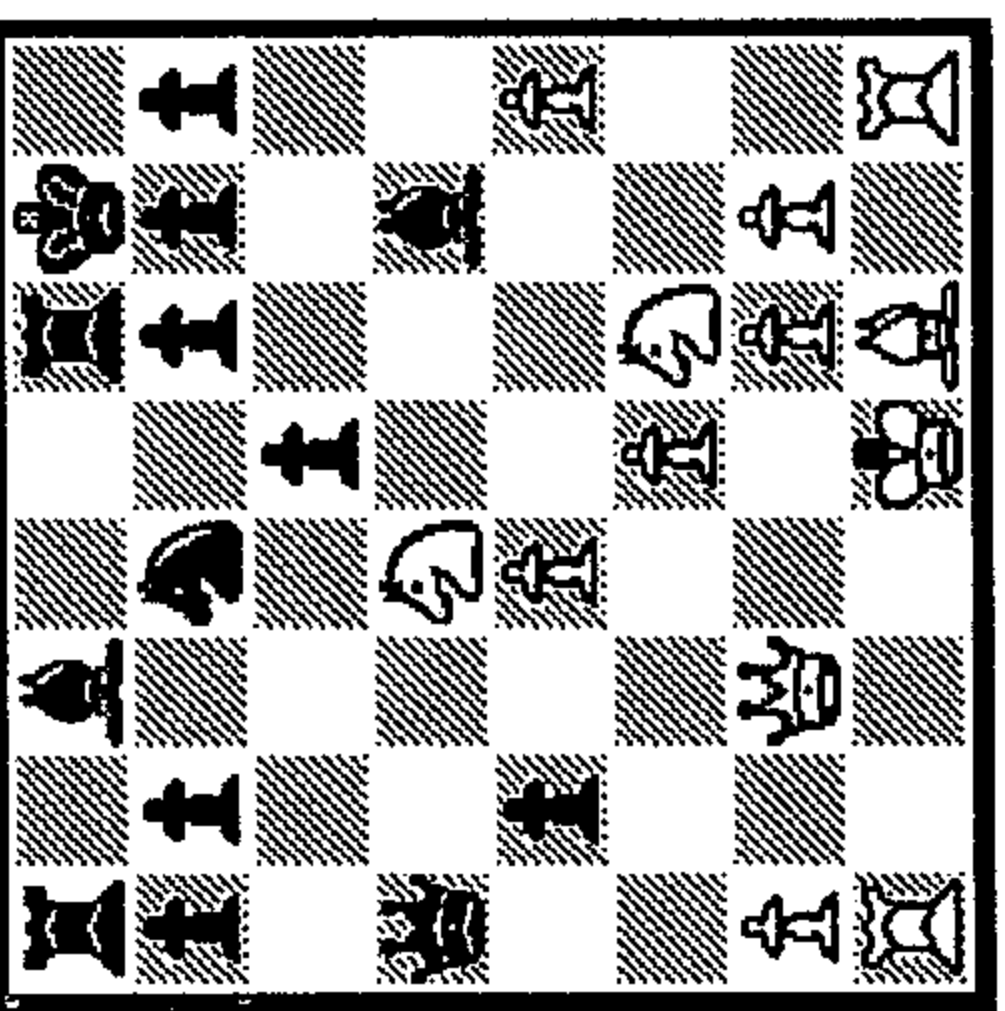
70 1.?

- 1\_
- 2\_
- 3\_



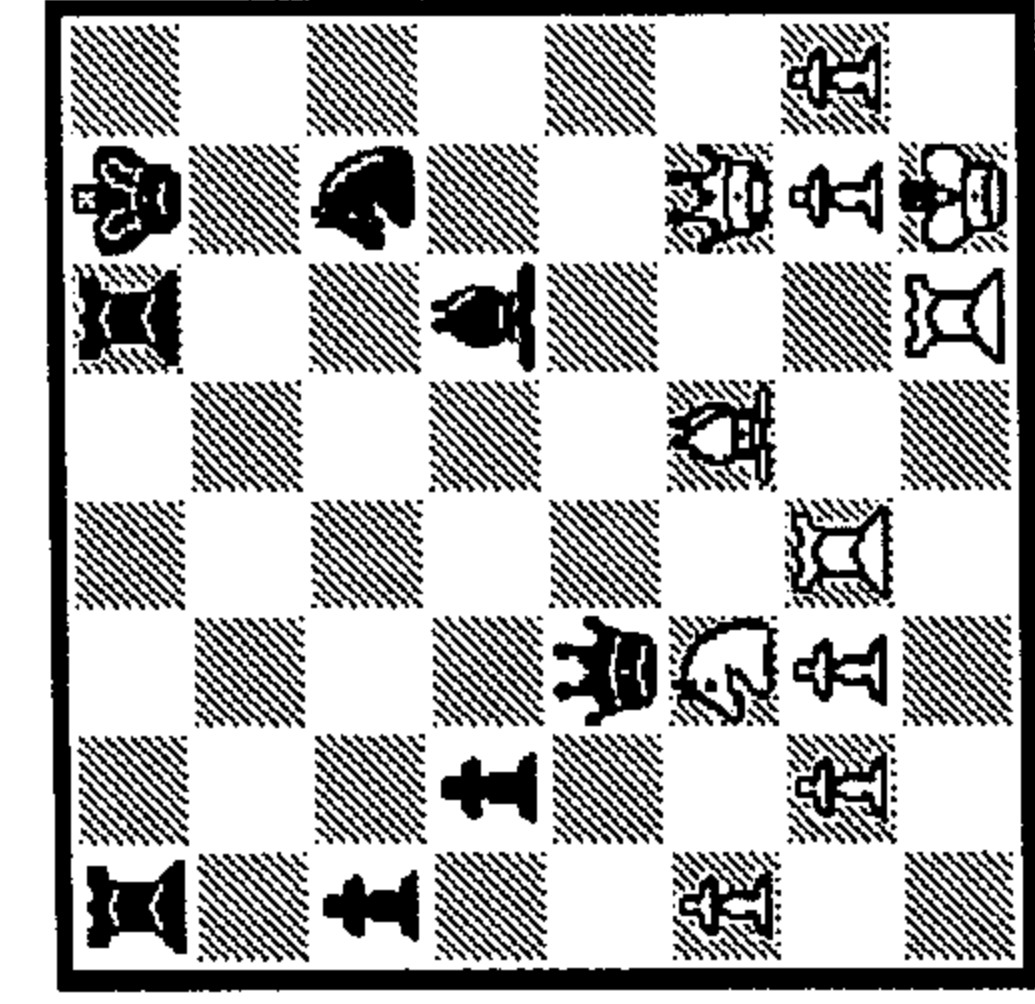
75 1.?

- 1\_
- 2\_
- 3\_



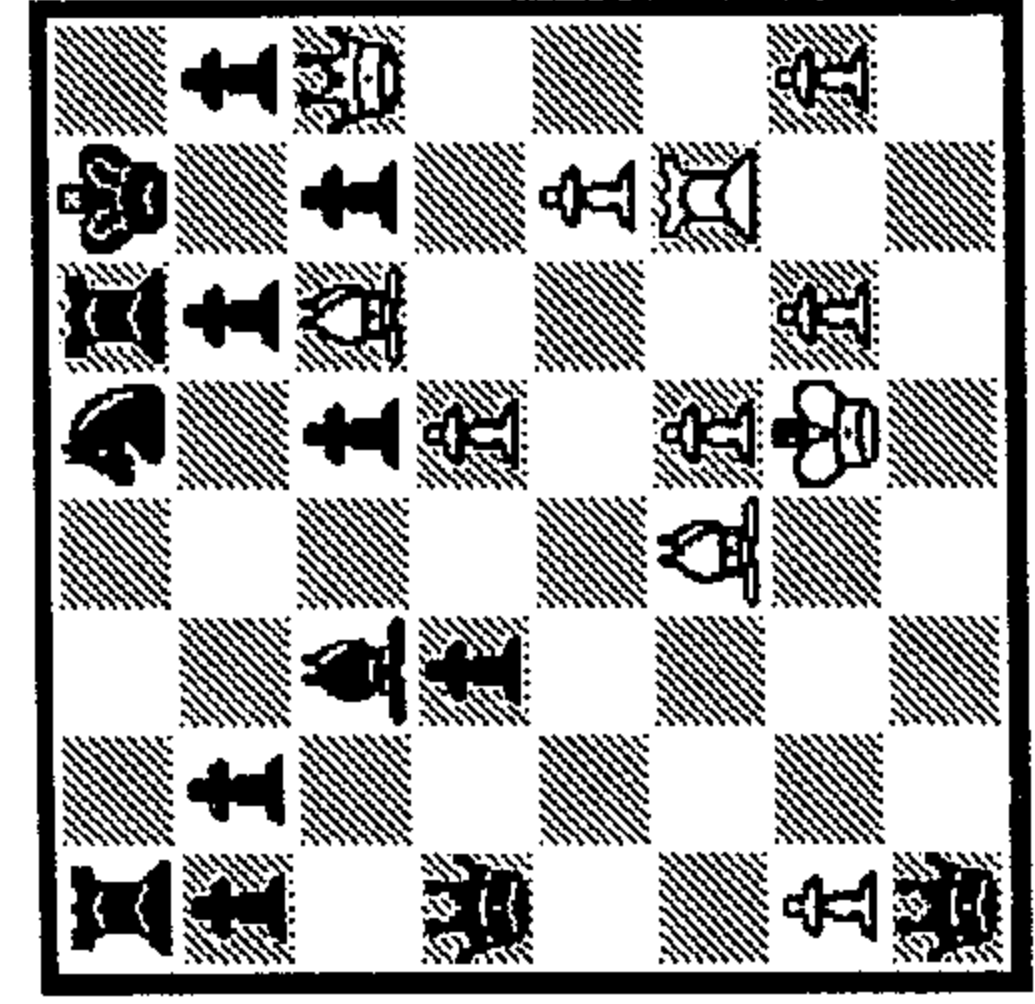
76 1.?

- 1\_
- 2\_
- 3\_



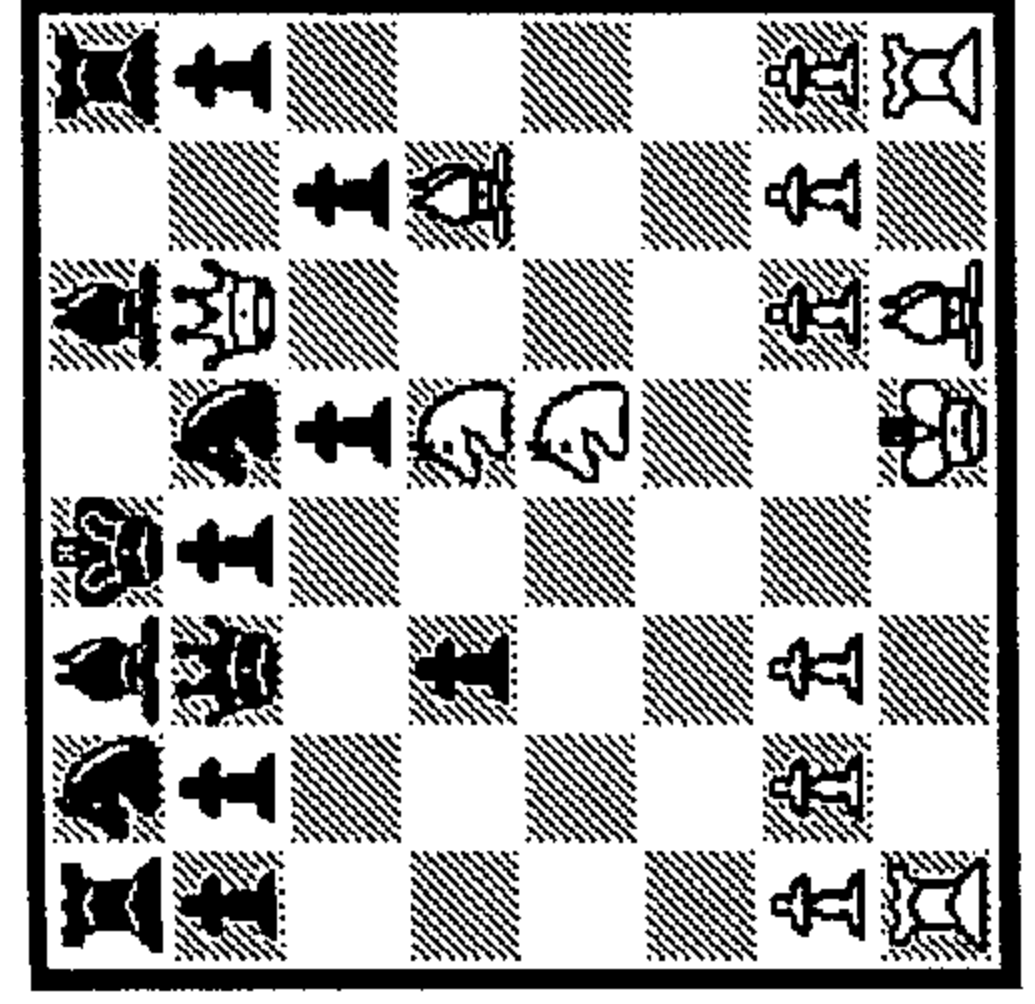
77 1...?

- 1\_
- 2\_
- 3\_



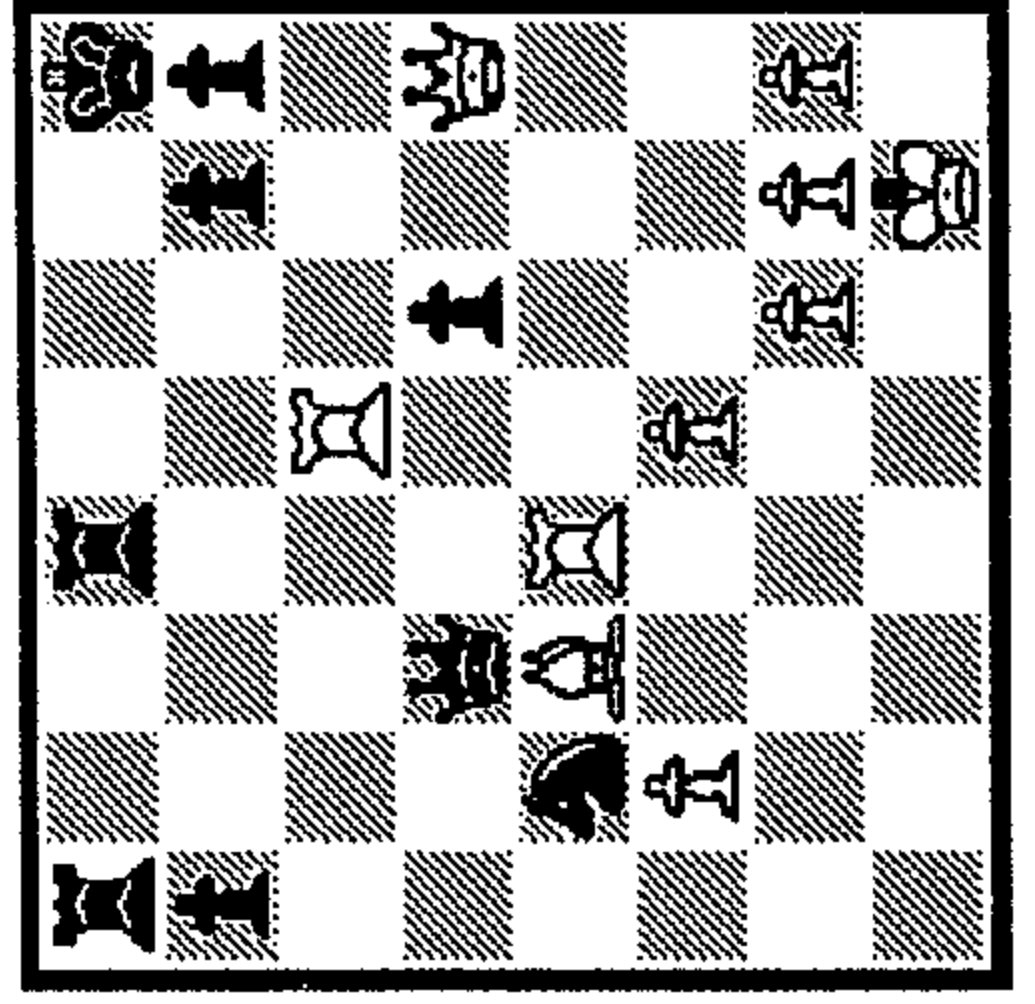
78 1.?

- 1\_
- 2\_
- 3\_



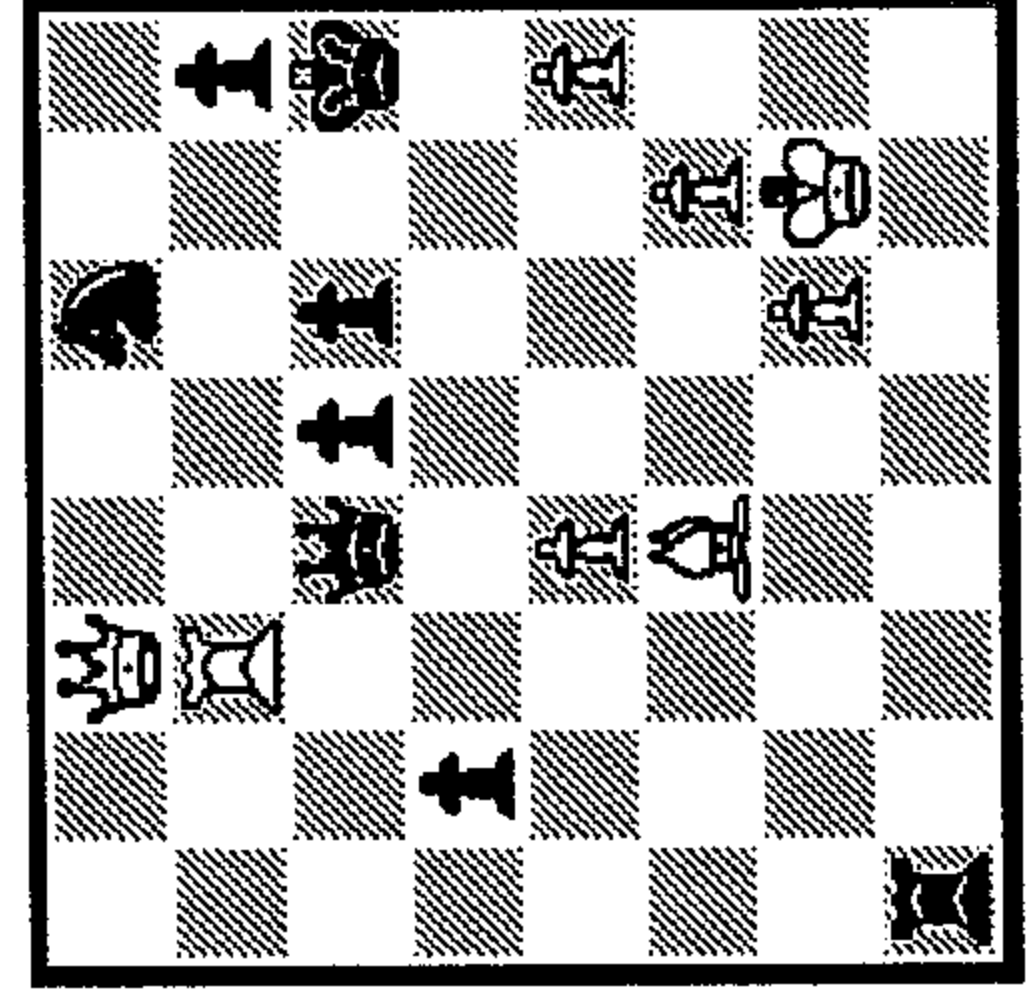
83 1.?

- 1\_
- 2\_
- 3\_



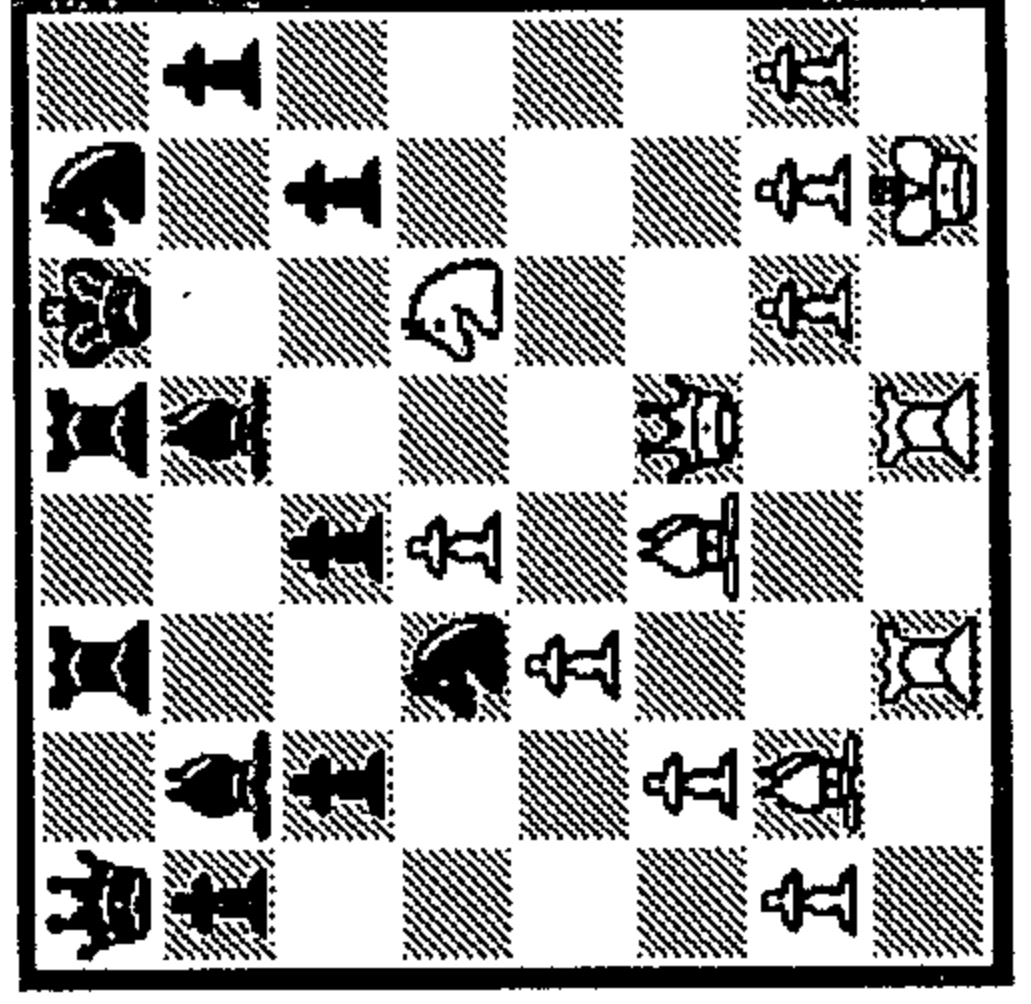
84 1.?

- 1\_
- 2\_
- 3\_



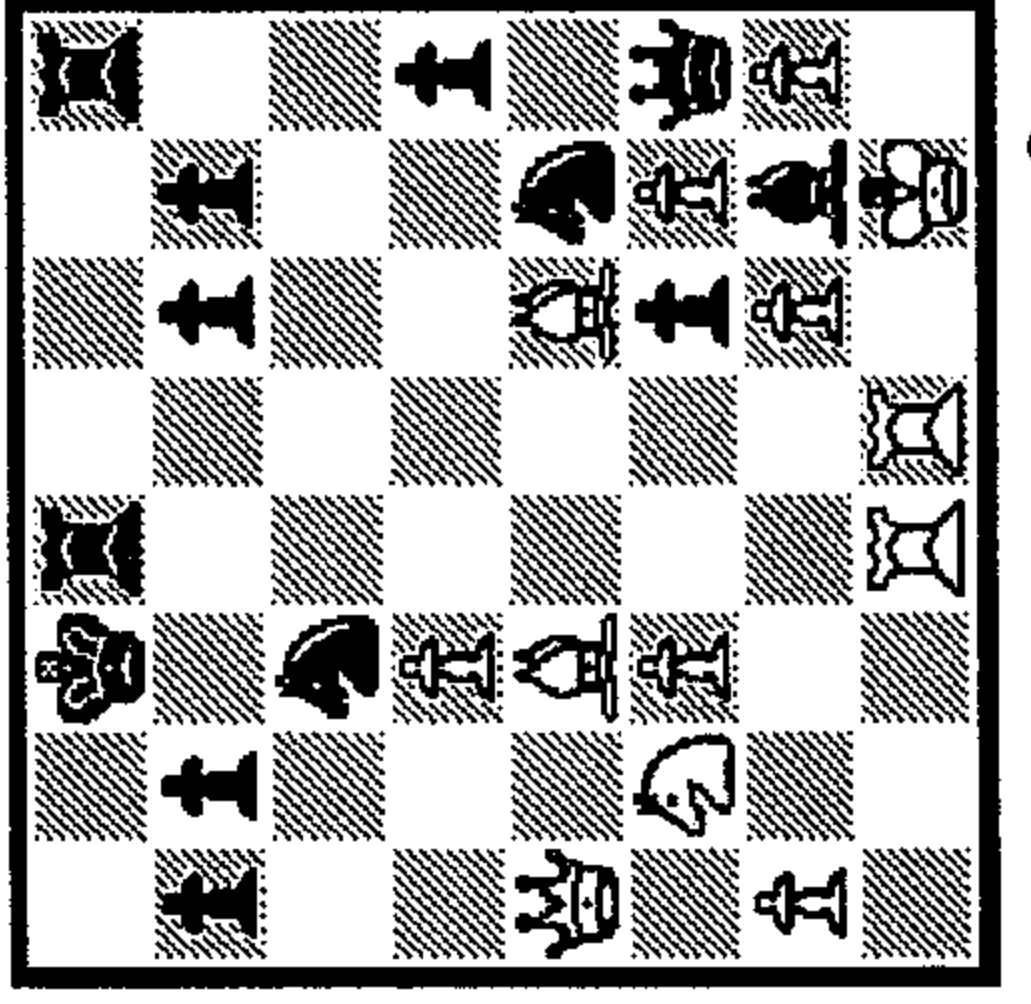
79 1.?

- 1\_
- 2\_
- 3\_



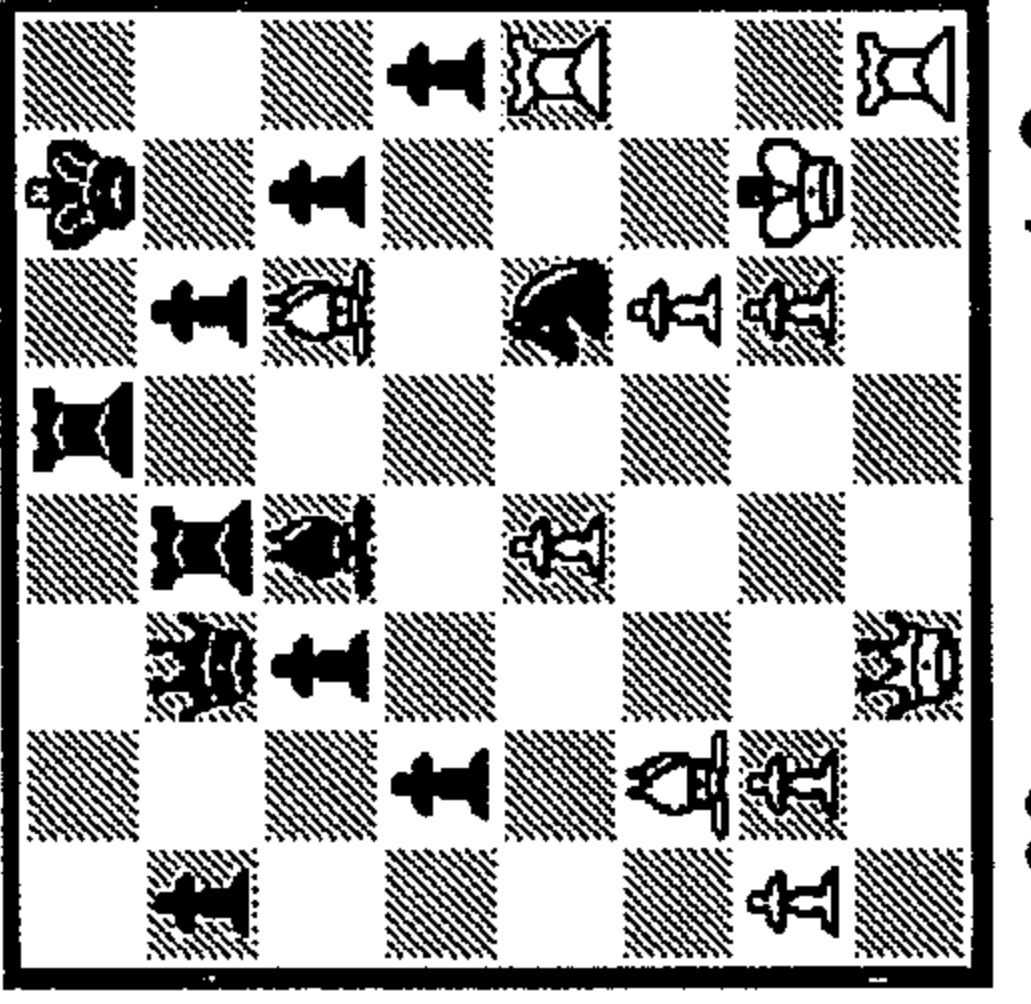
80 1.?

- 1\_
- 2\_
- 3\_



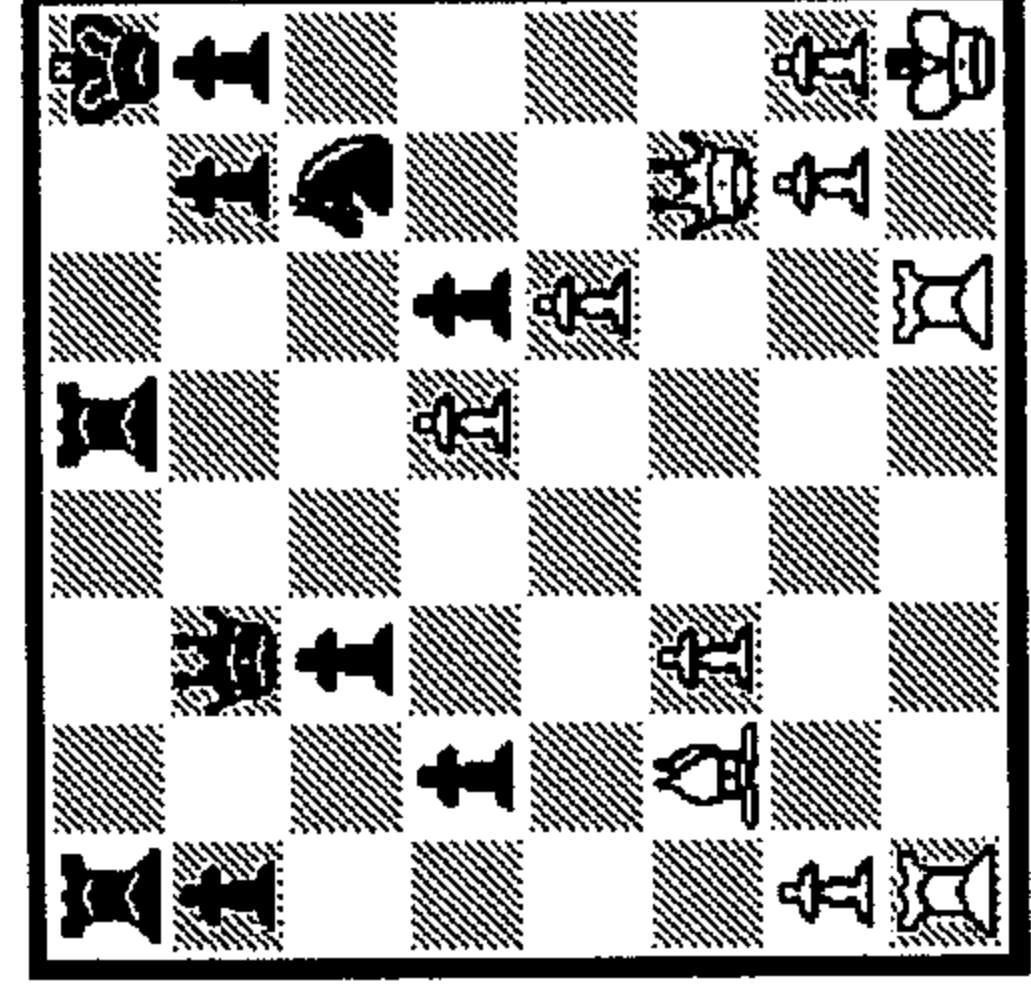
85 1.?

- 1\_
- 2\_
- 3\_



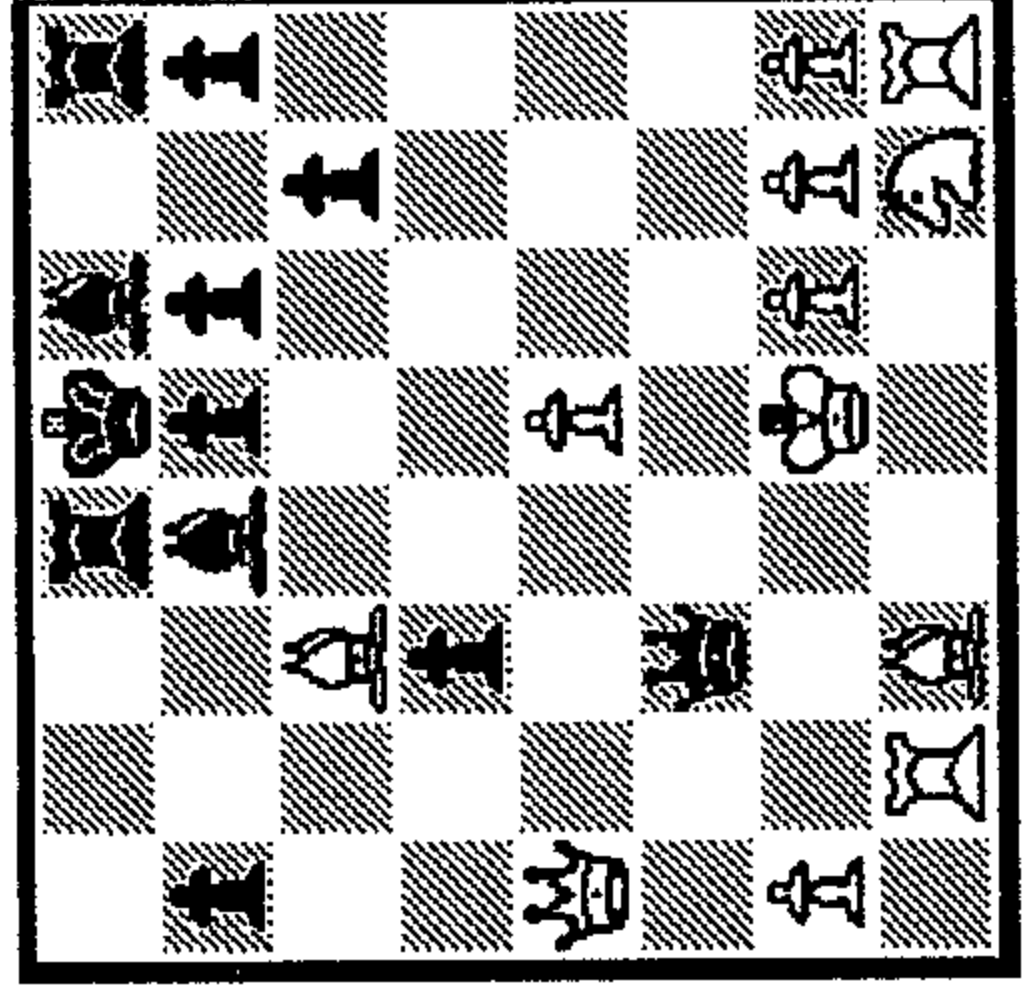
86 1.?

- 1\_
- 2\_
- 3\_



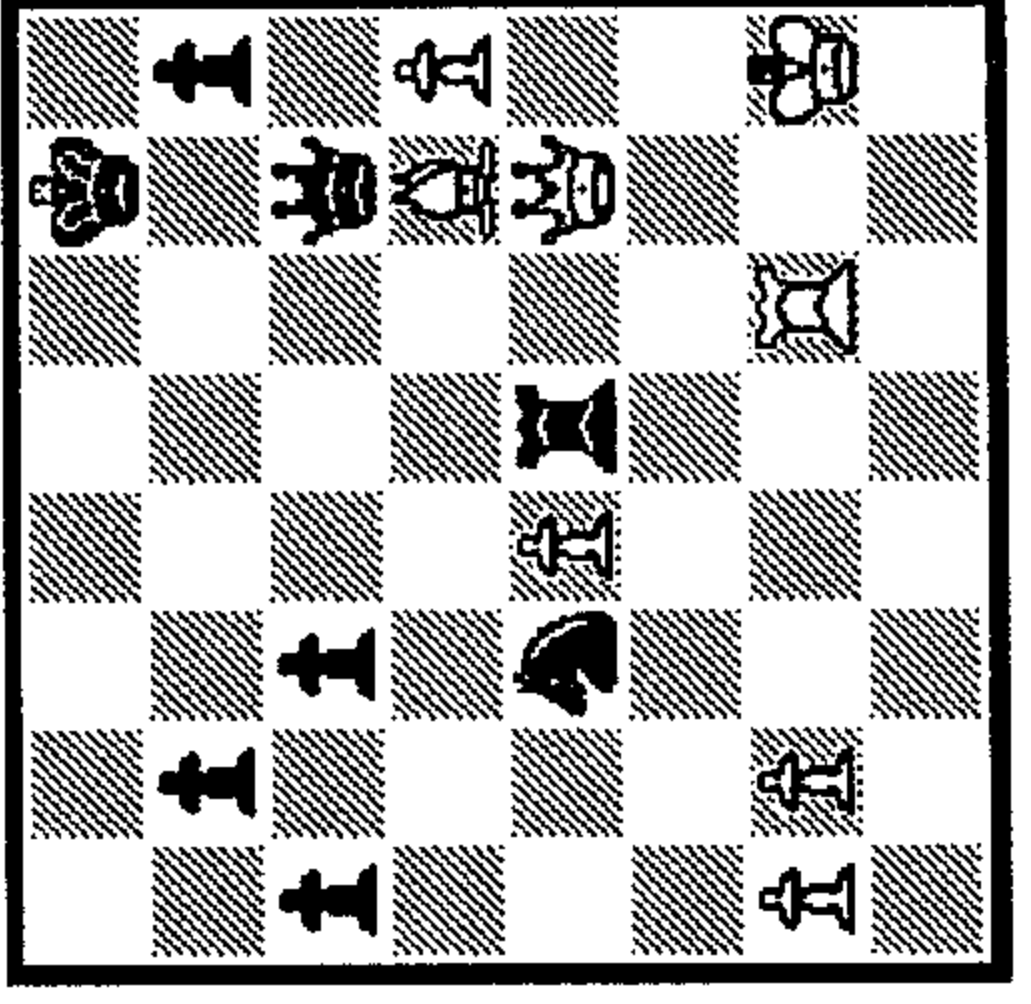
81 1.?

- 1\_
- 2\_
- 3\_



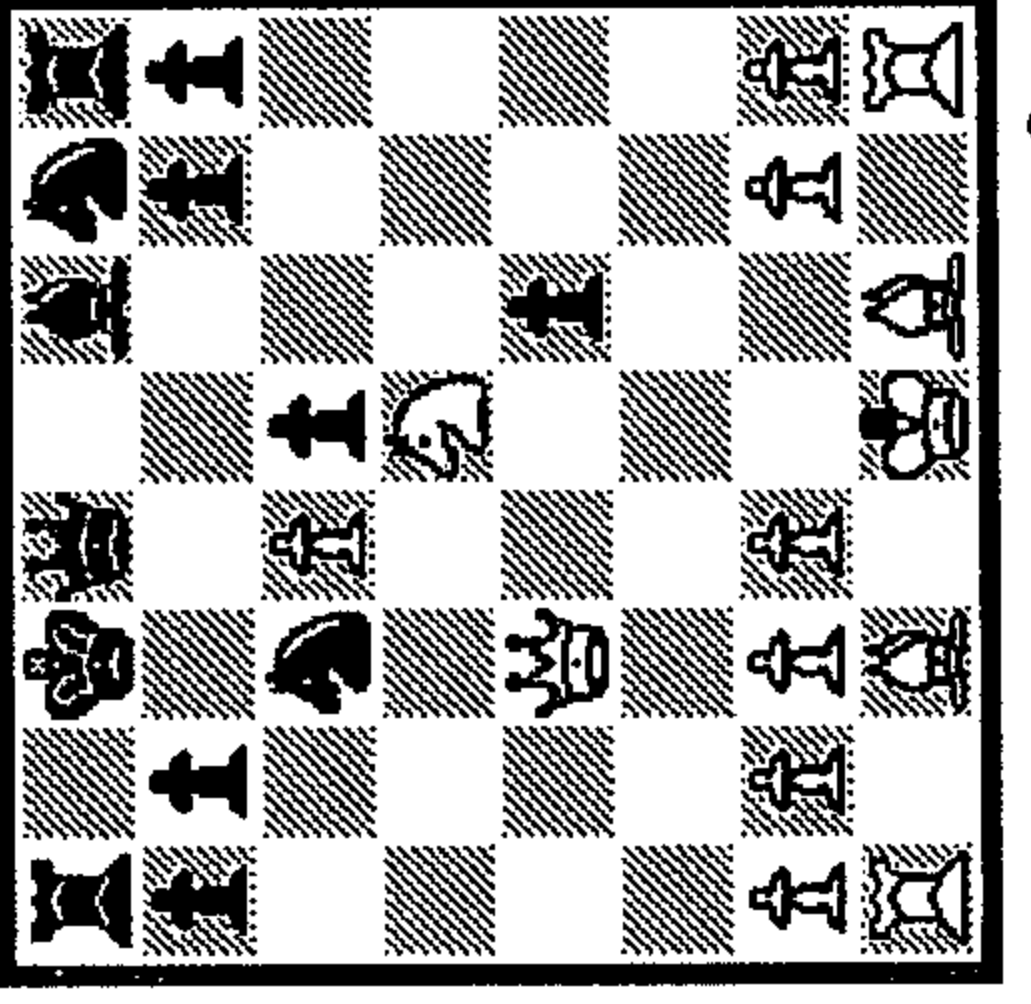
82 1...?

- 1\_
- 2\_
- 3\_



87 1.?

- 1\_
- 2\_
- 3\_



88 1.?

- 1\_
- 2\_
- 3\_