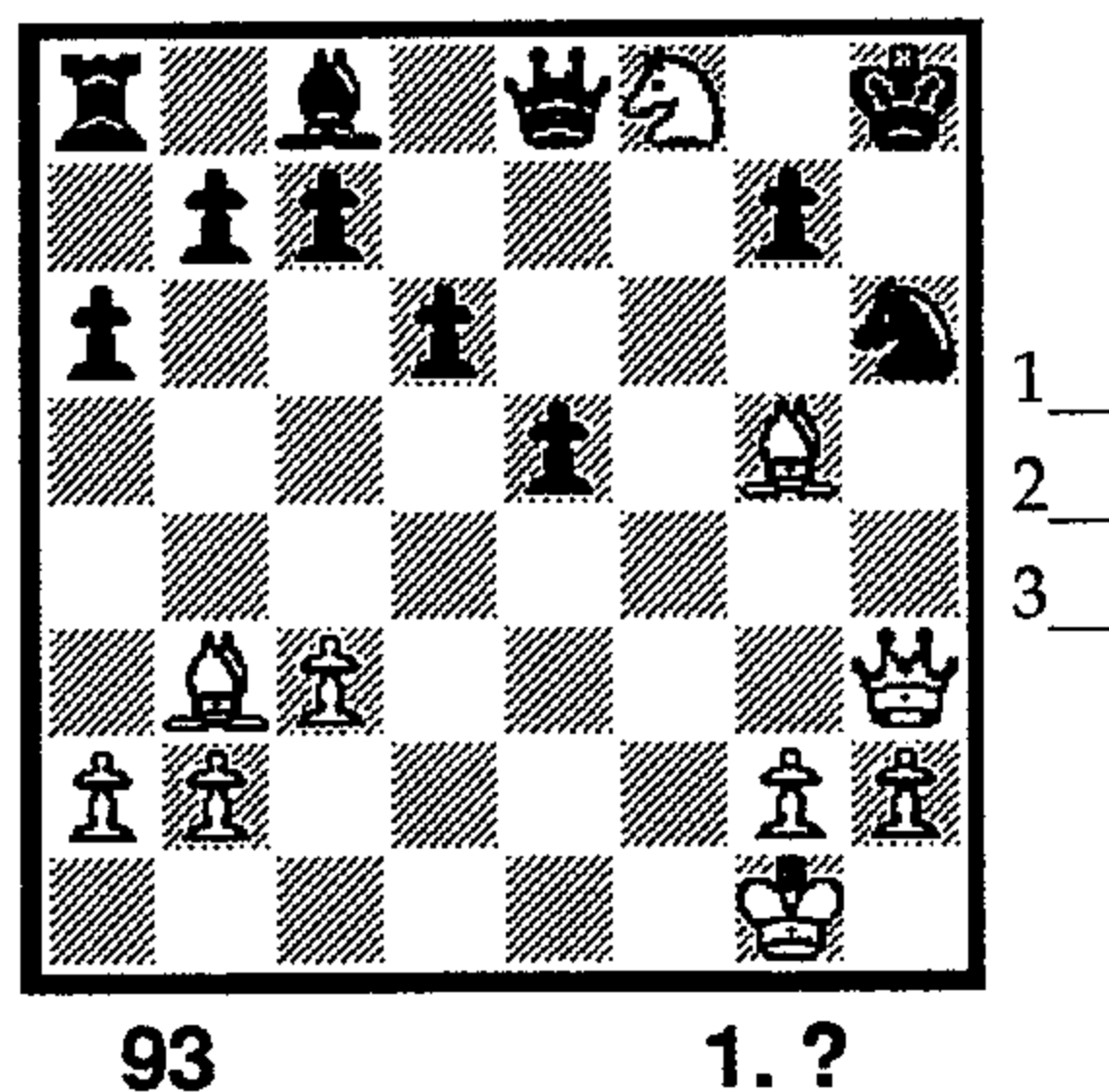
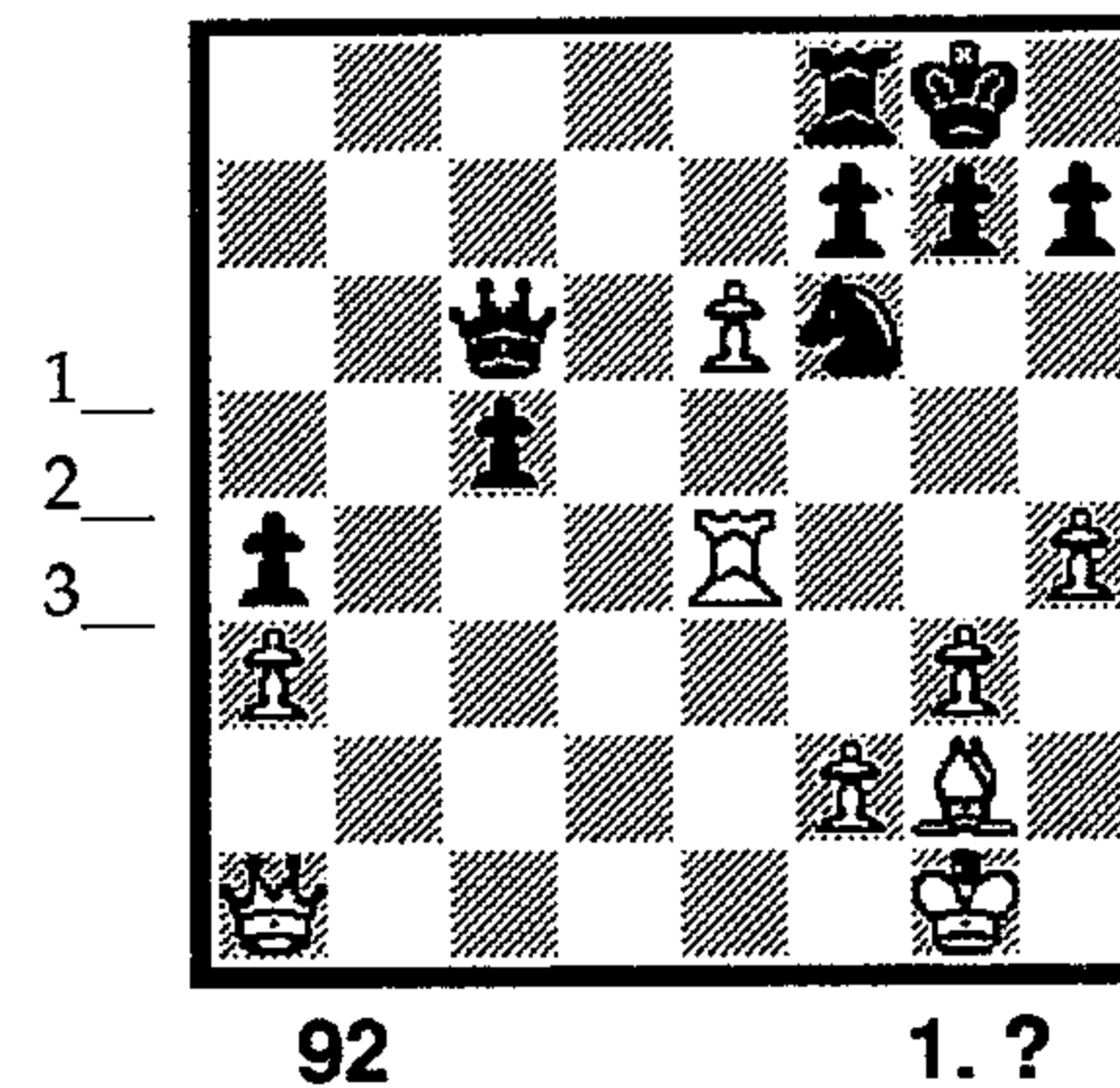
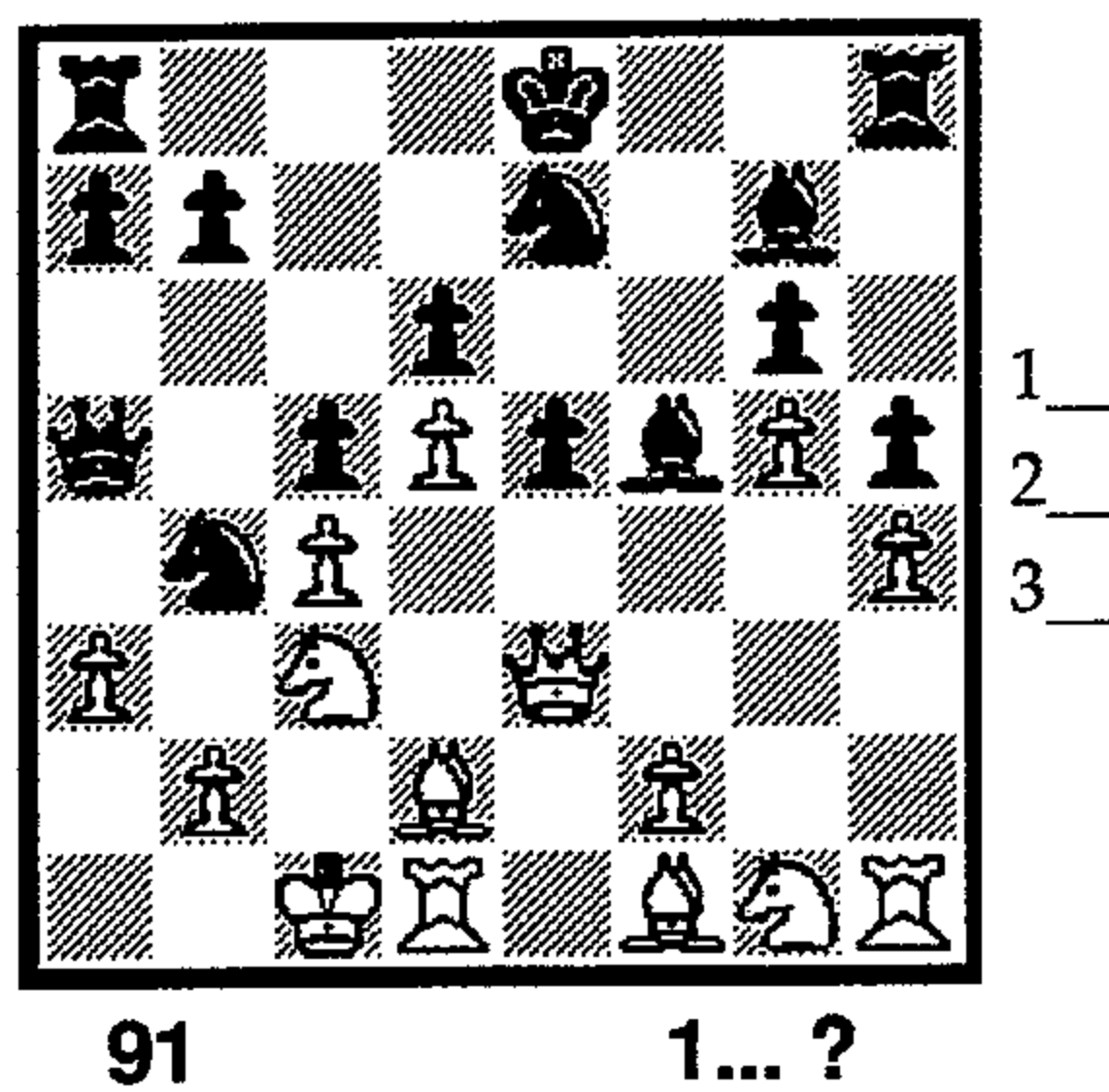
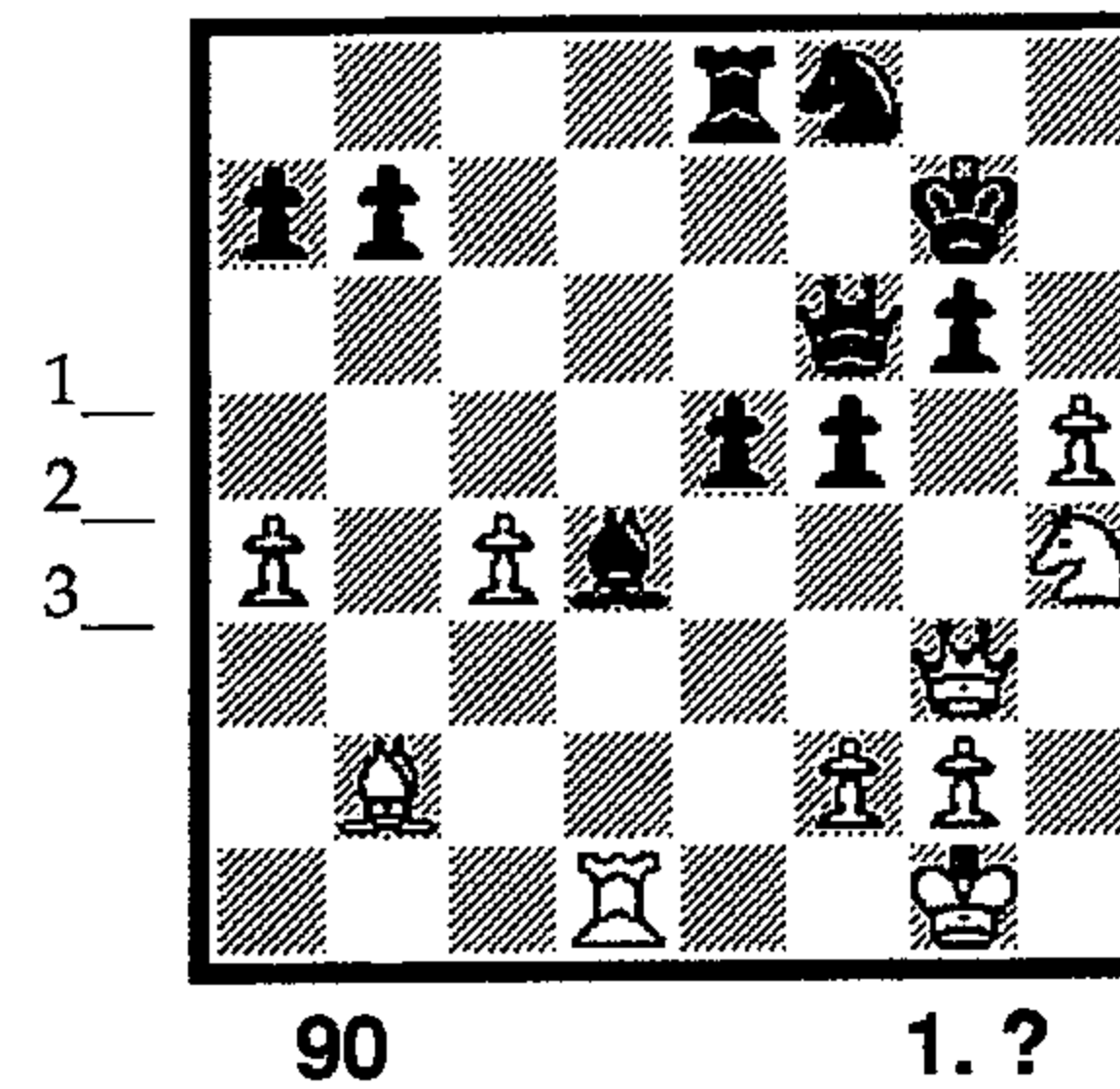
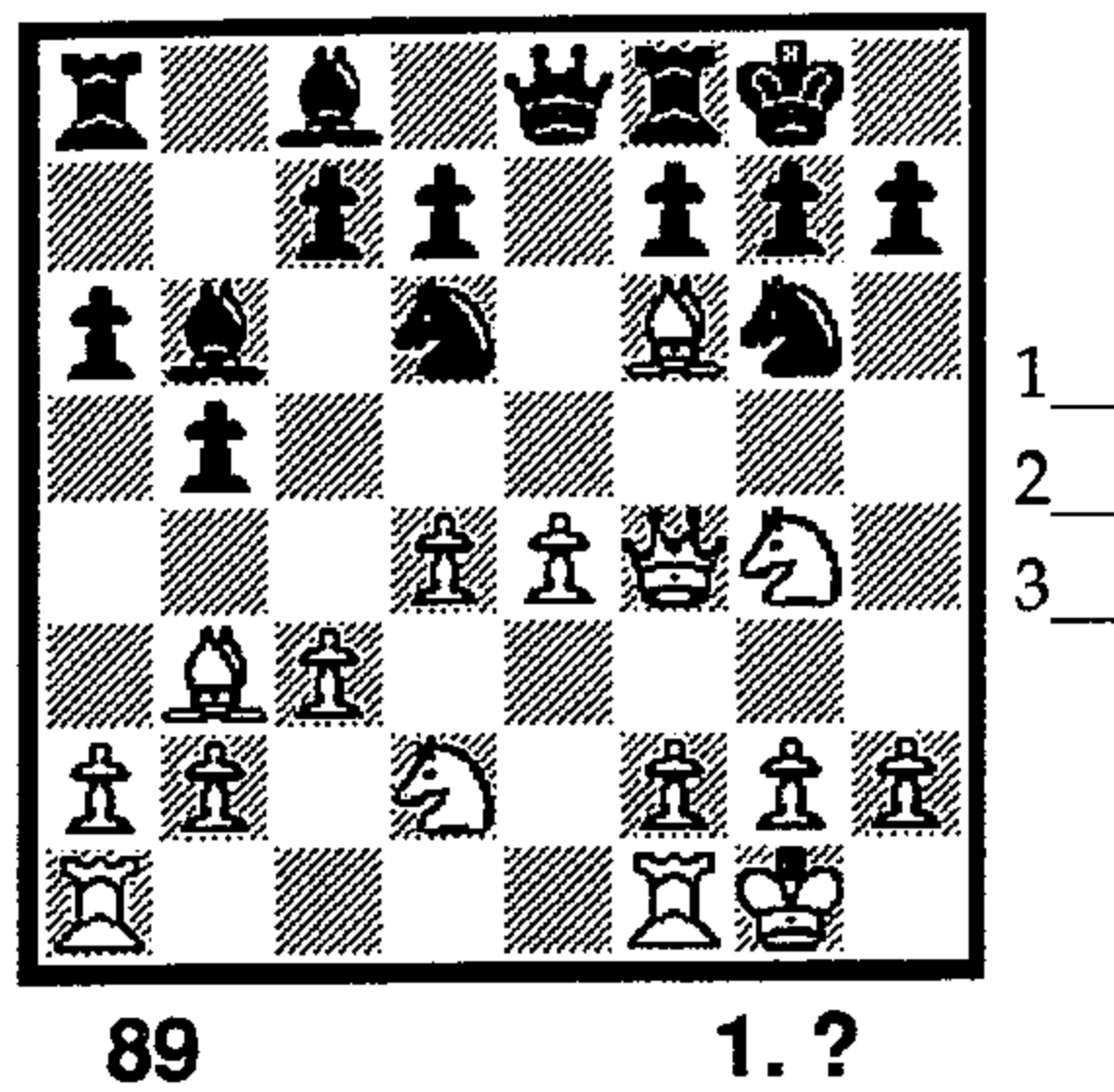
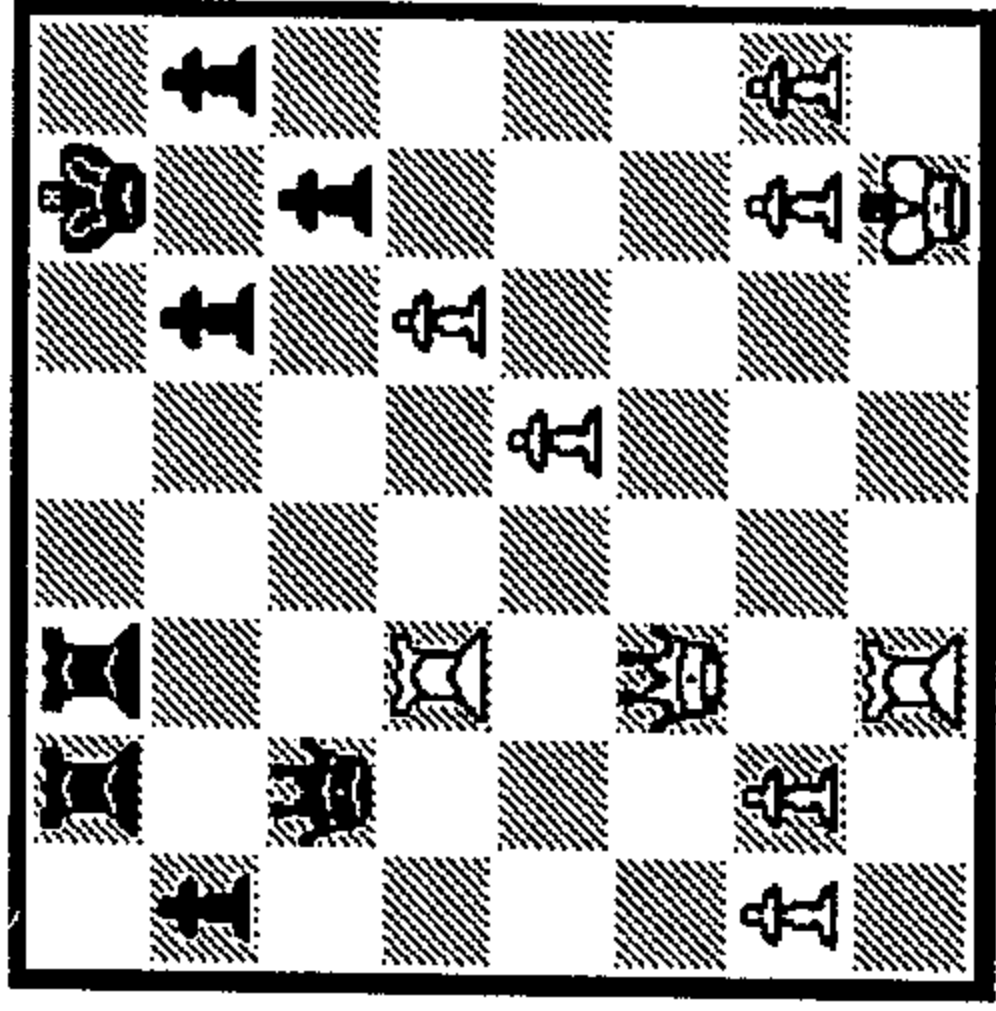


# THE PIN

Pinning is one of the most frequently occurring tactical motifs. The pin involves an attack on an enemy piece which is situated on a straight line (i.e. a file, a rank, or a diagonal) and in front of a more valuable piece. Since the first attacked piece is less valuable, it dare not move because the more valuable piece behind it would be exposed to immediate attack. Hence the first piece "in line" is pinned down and, reluctantly, subject to capture.

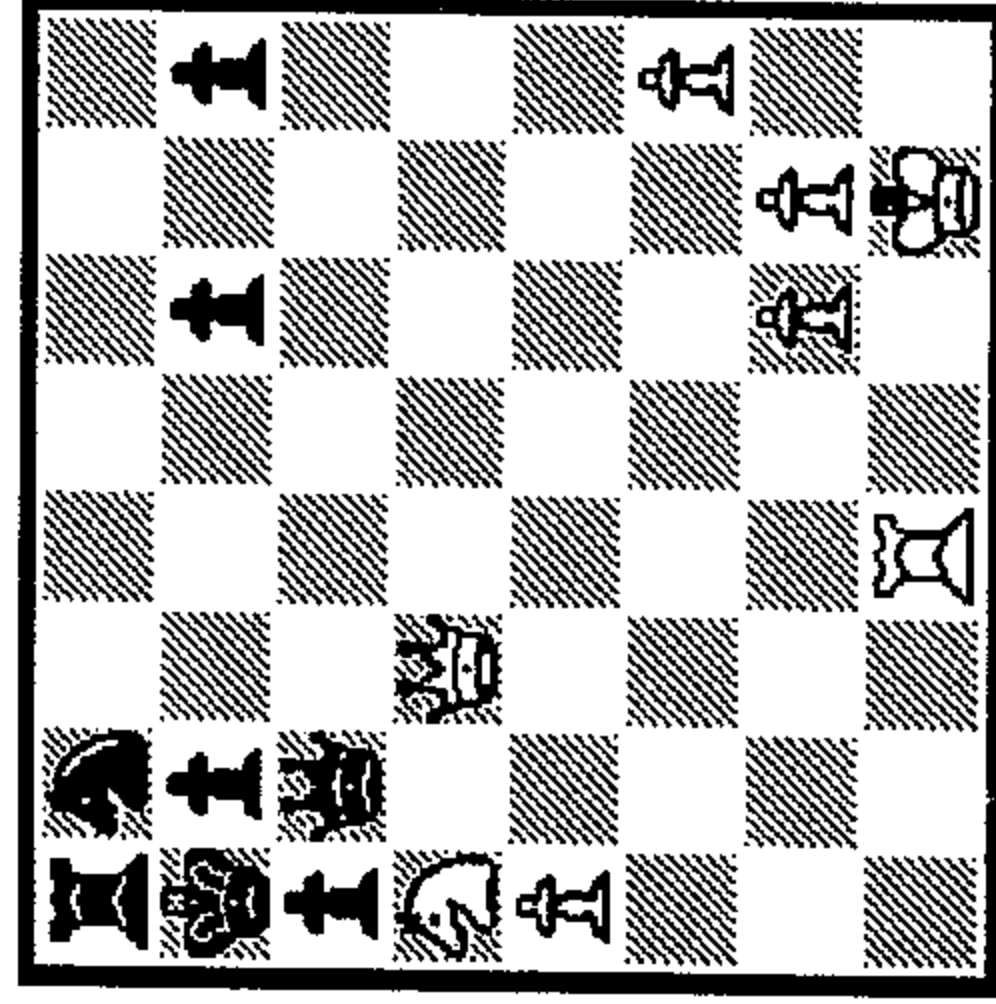
There are two kinds of pins, the absolute and the relative pin. An absolute pin involves a piece in front of its King, which cannot legally move away to protect itself since this would leave the King in check. For this reason the absolute pin is normally very damaging. The relative pin is one without the King's involvement. In some of these cases the pinned piece may be able to move away if it can in turn produce a stronger threat of its own. For this reason relative pins must be examined with some degree of caution.





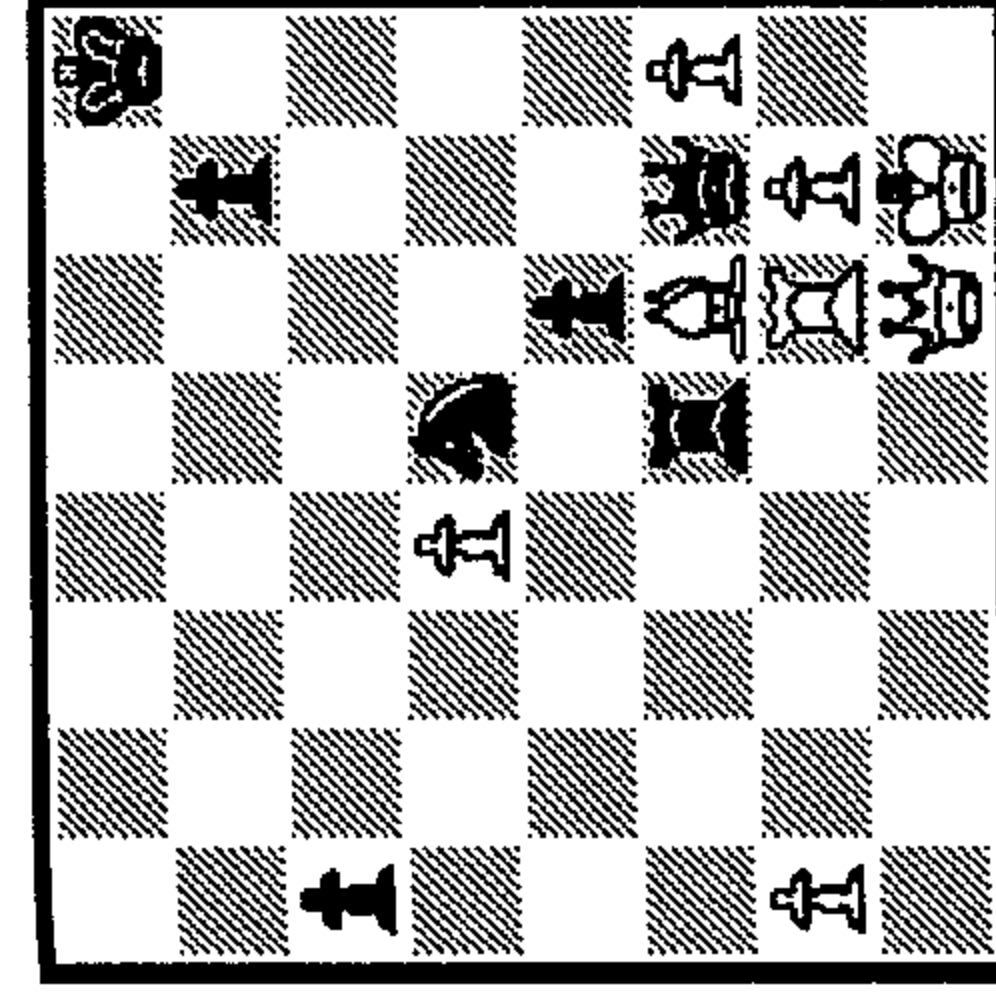
94 1...?

1\_ \_  
2\_ \_  
3\_ \_



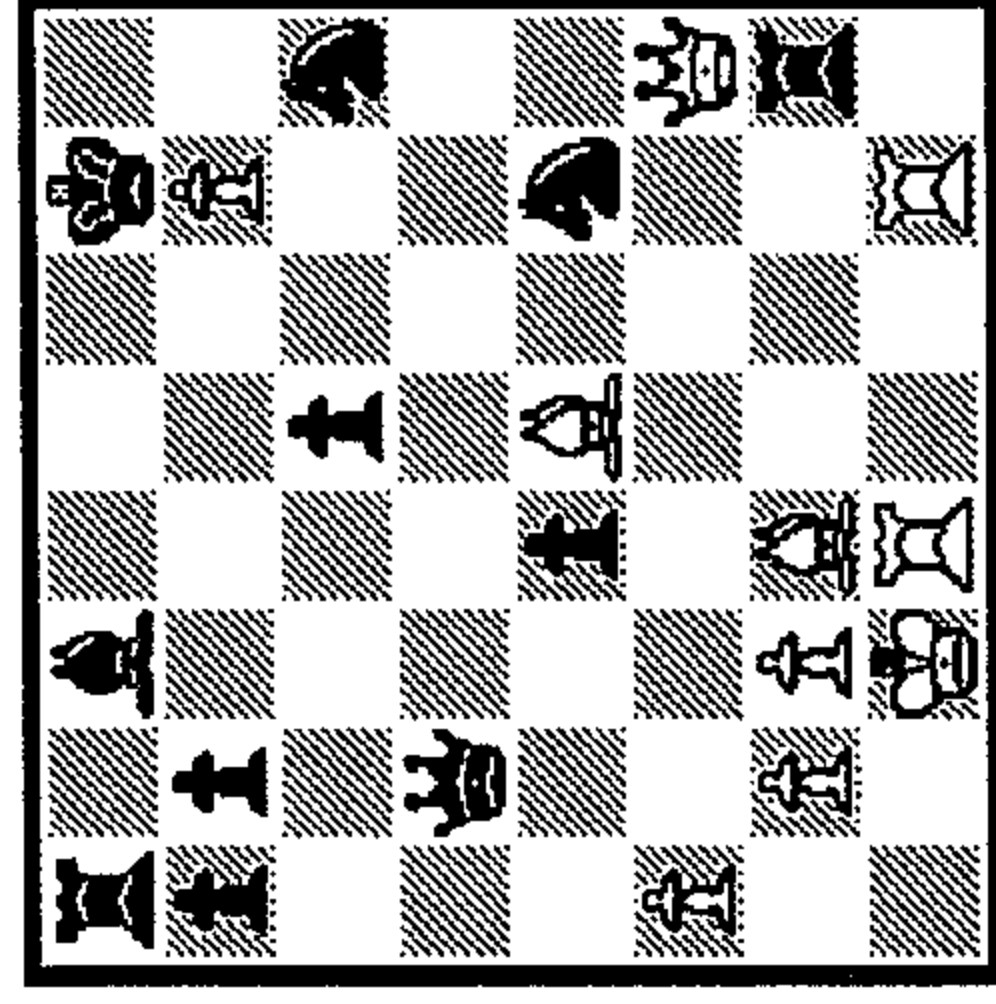
95 1.?

1\_ \_  
2\_ \_  
3\_ \_



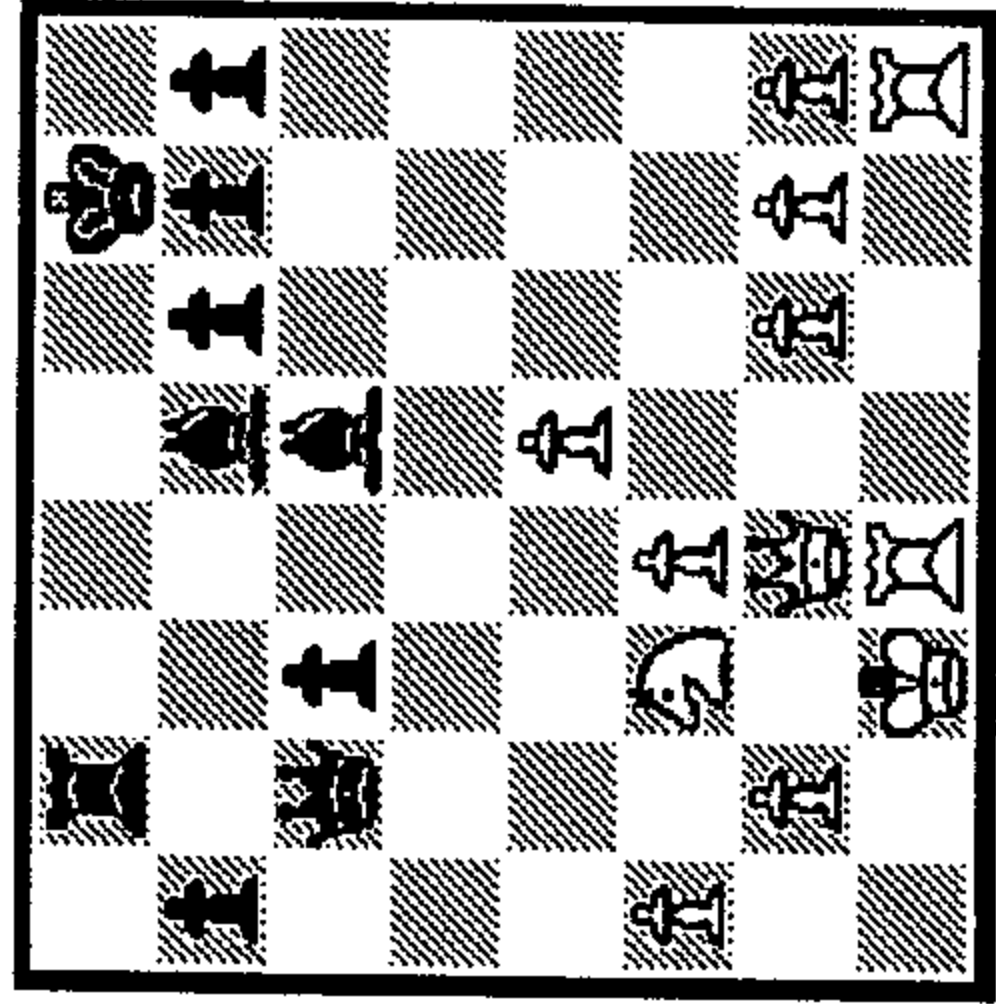
100 1...?

1\_ \_  
2\_ \_  
3\_ \_



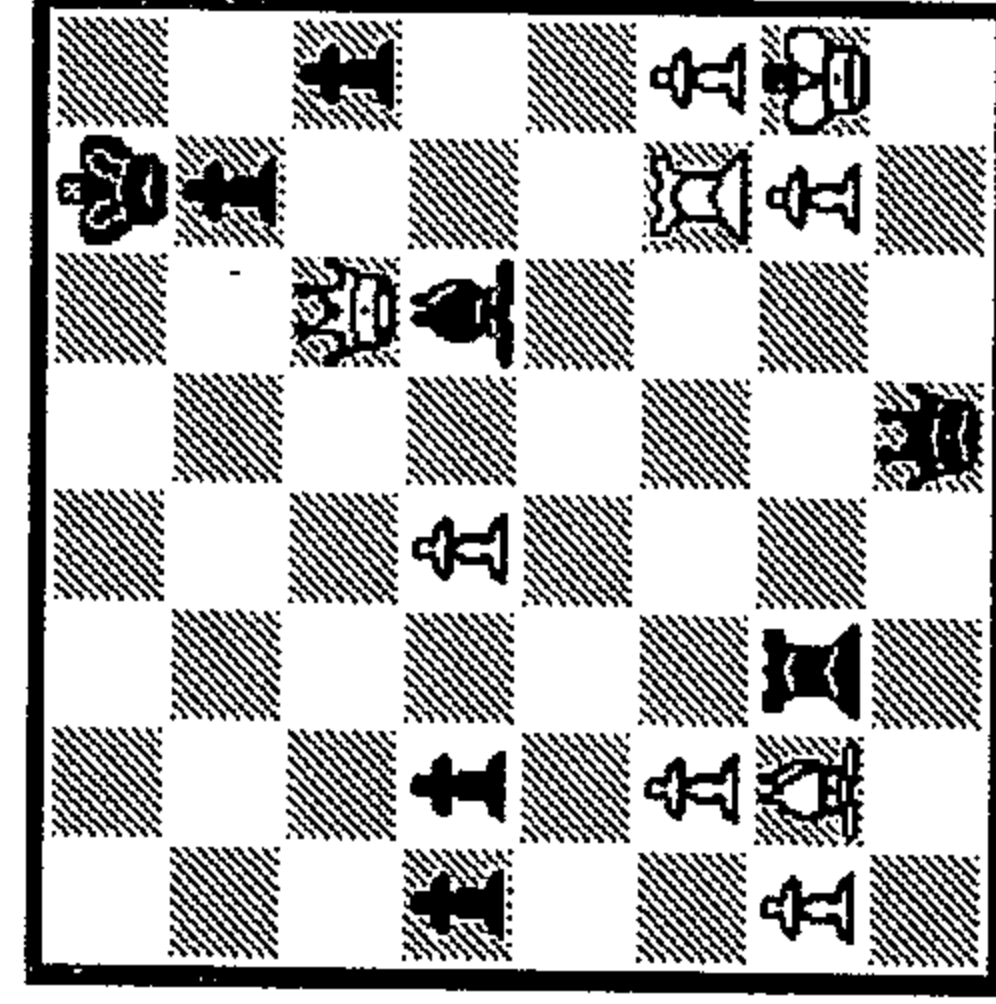
101 1.?

1\_ \_  
2\_ \_  
3\_ \_



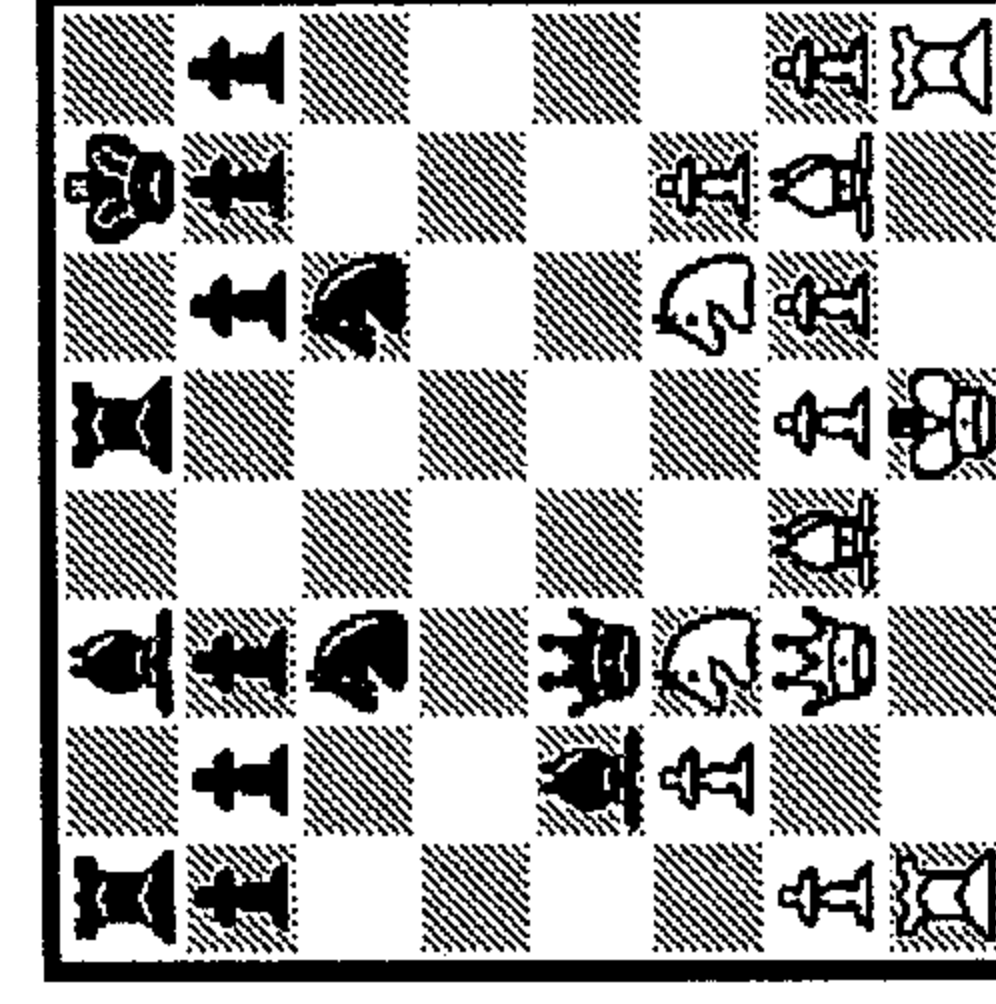
96 1...?

1\_ \_  
2\_ \_  
3\_ \_



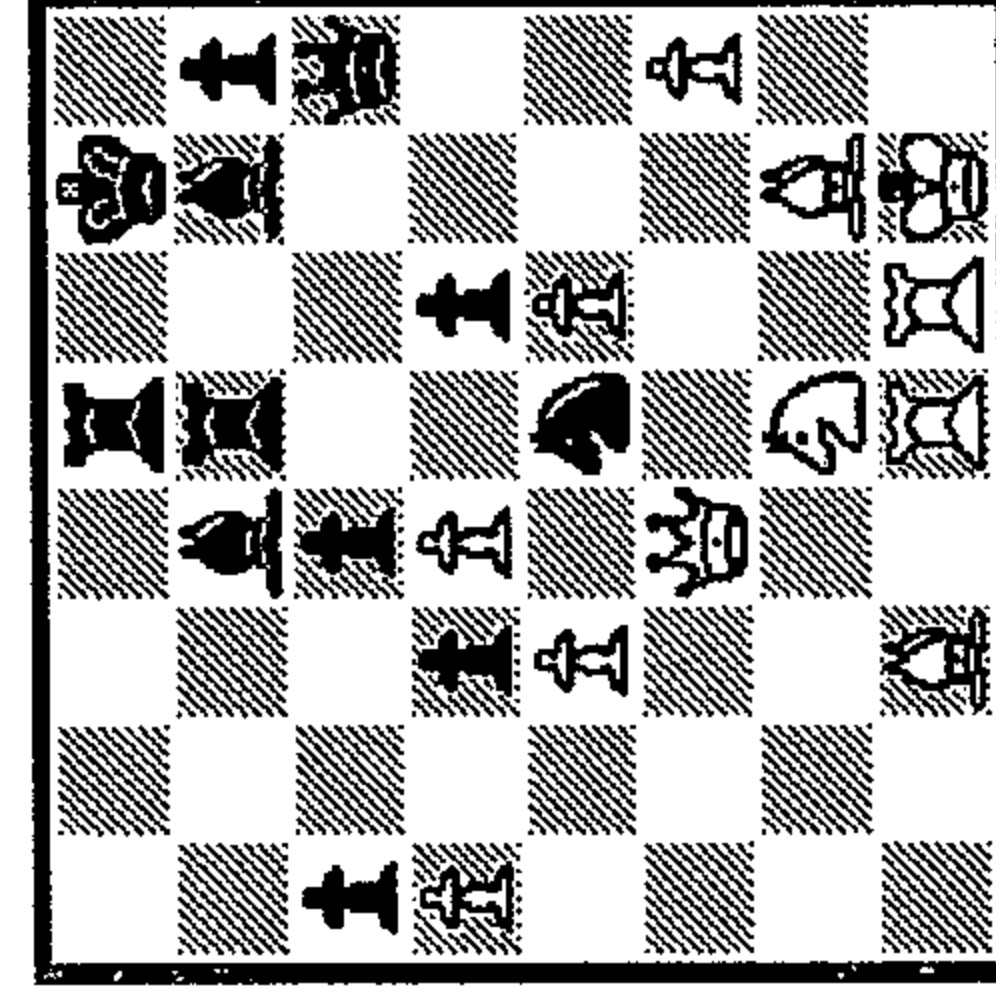
97 1...?

1\_ \_  
2\_ \_  
3\_ \_



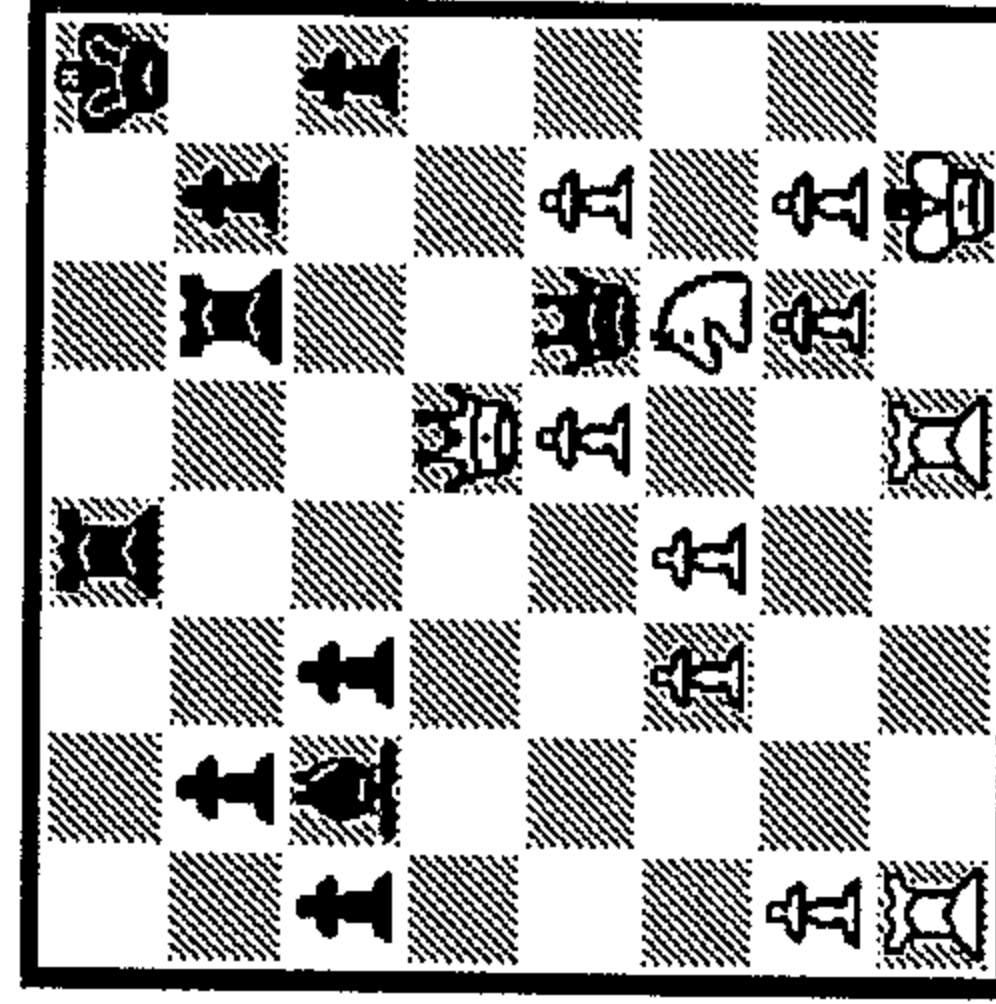
102 1...?

1\_ \_  
2\_ \_  
3\_ \_



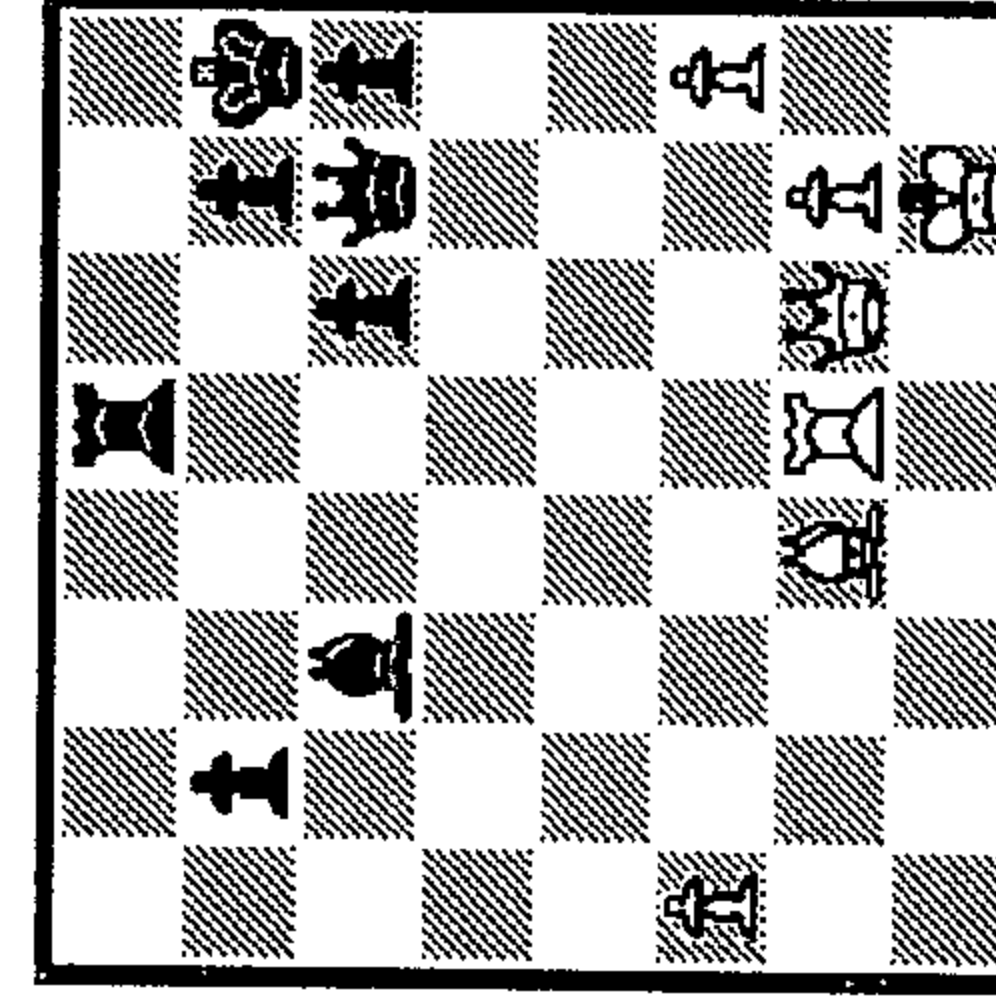
103 1...?

1\_ \_  
2\_ \_  
3\_ \_



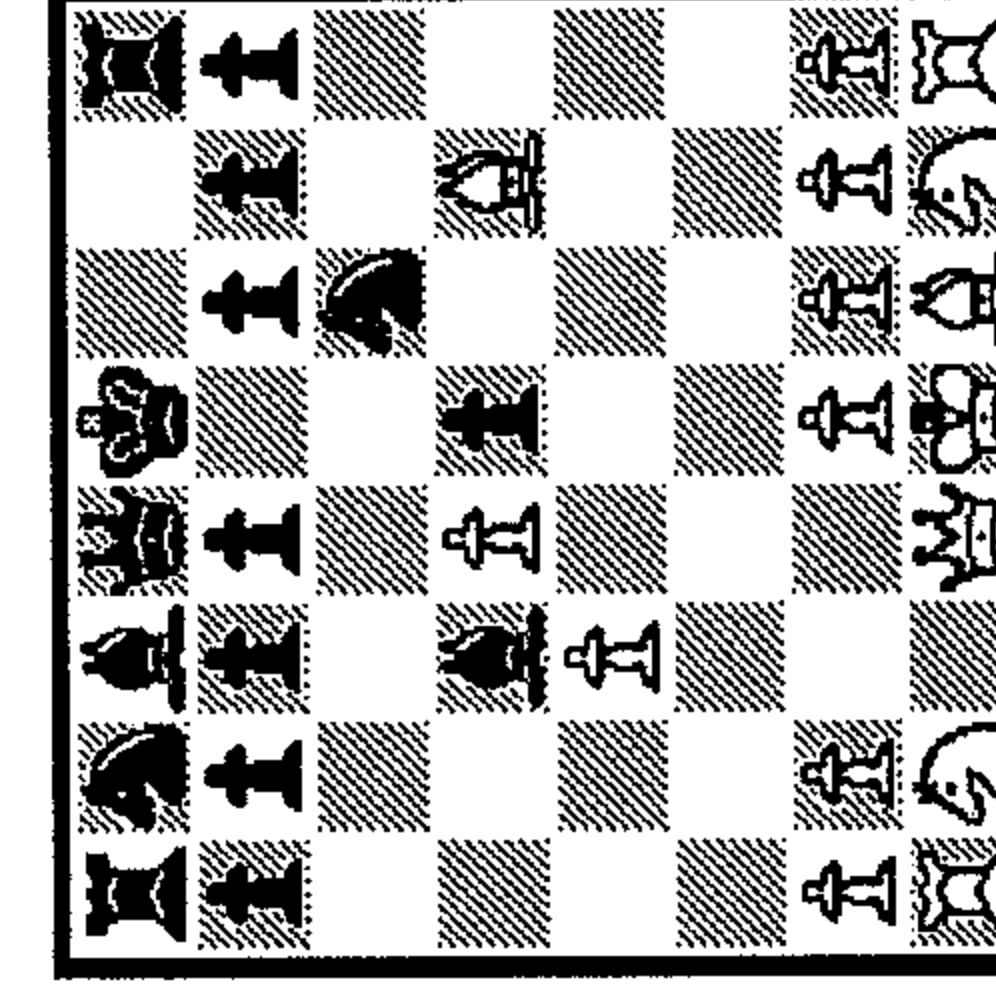
98 1...?

1\_ \_  
2\_ \_  
3\_ \_



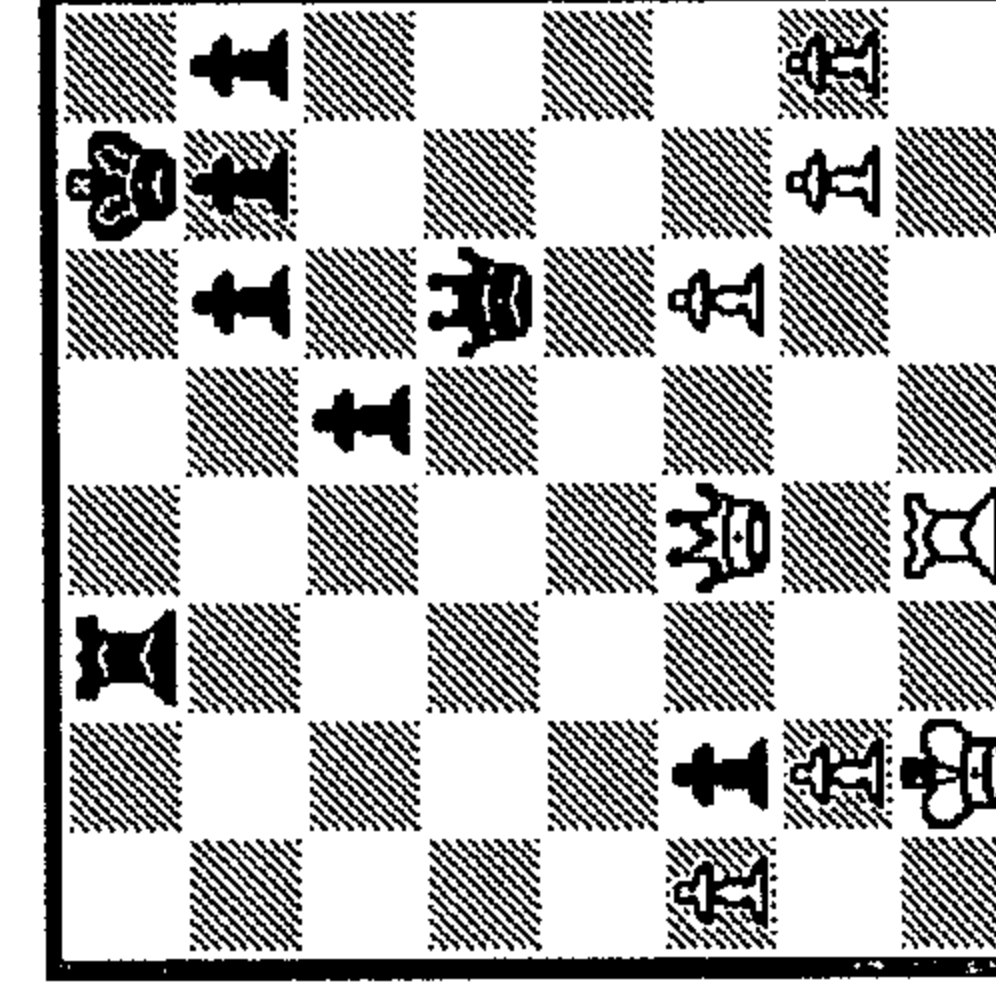
99 1...?

1\_ \_  
2\_ \_  
3\_ \_



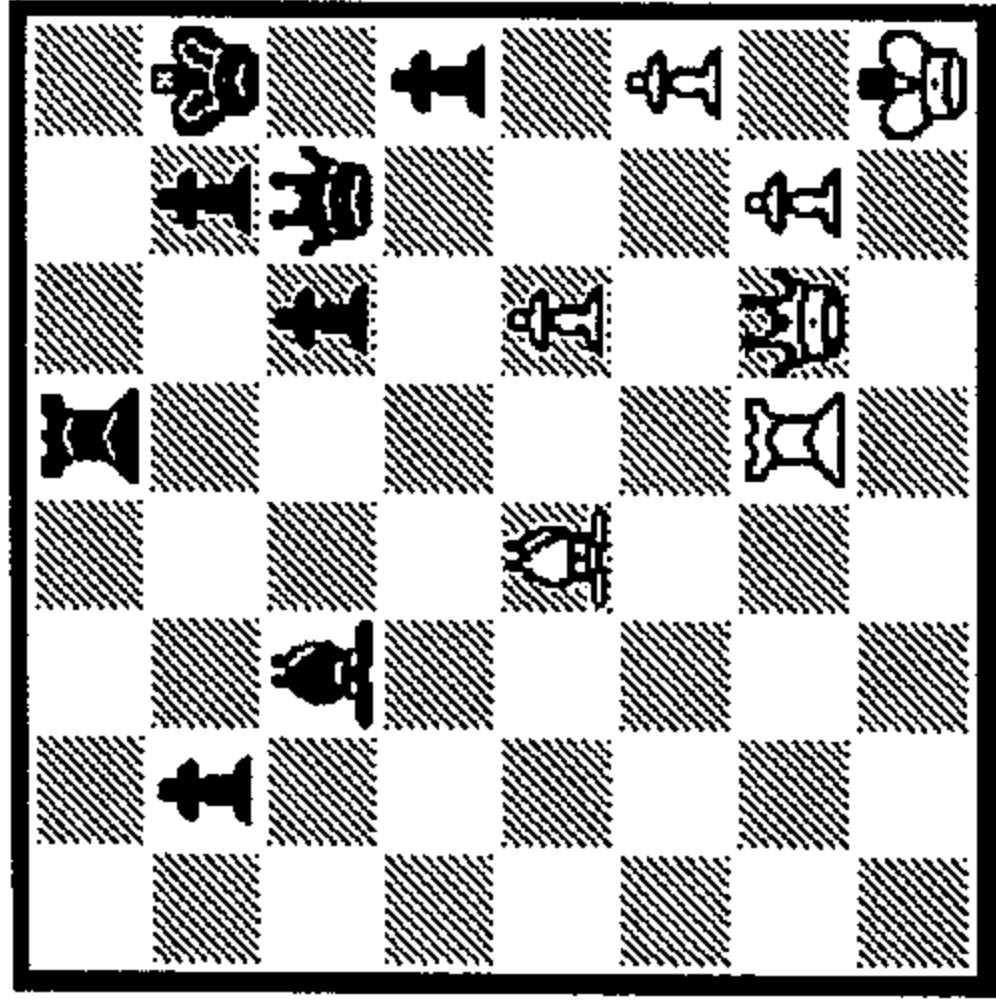
104 1...?

1\_ \_  
2\_ \_  
3\_ \_



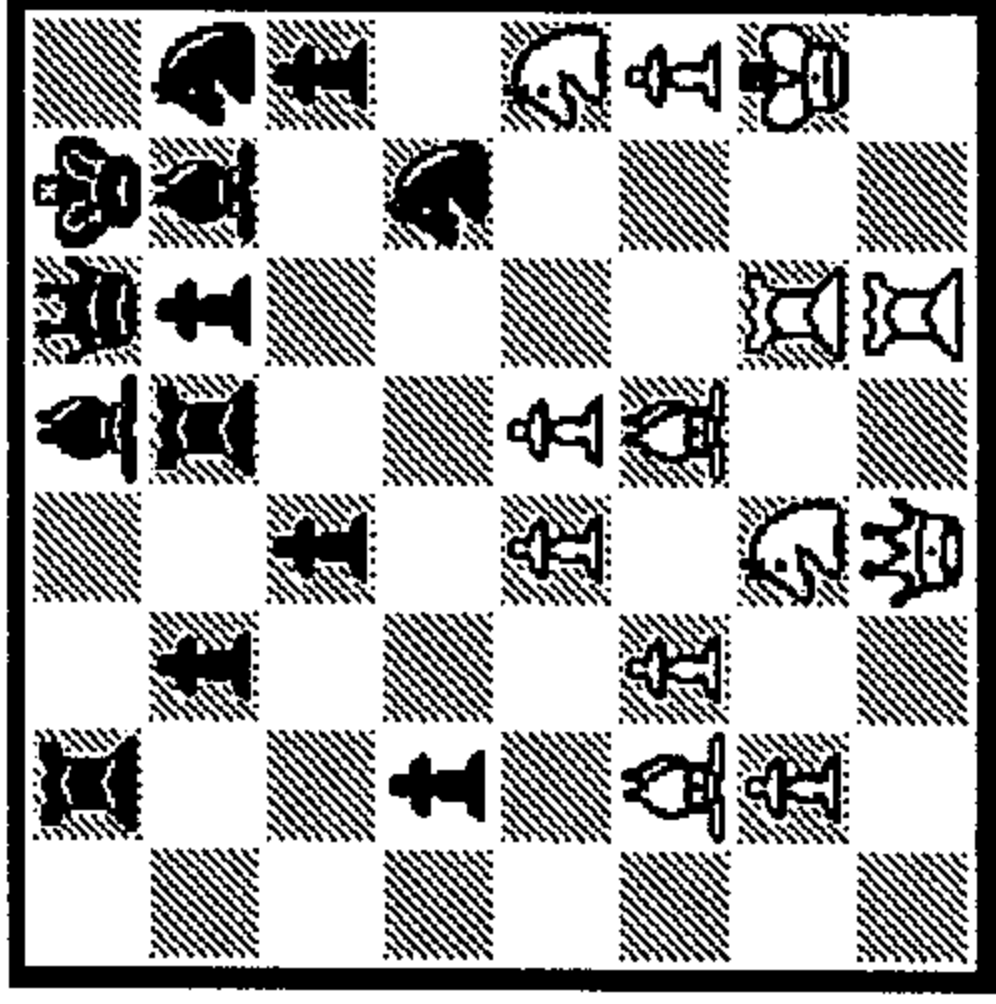
105 1...?

1\_ \_  
2\_ \_  
3\_ \_



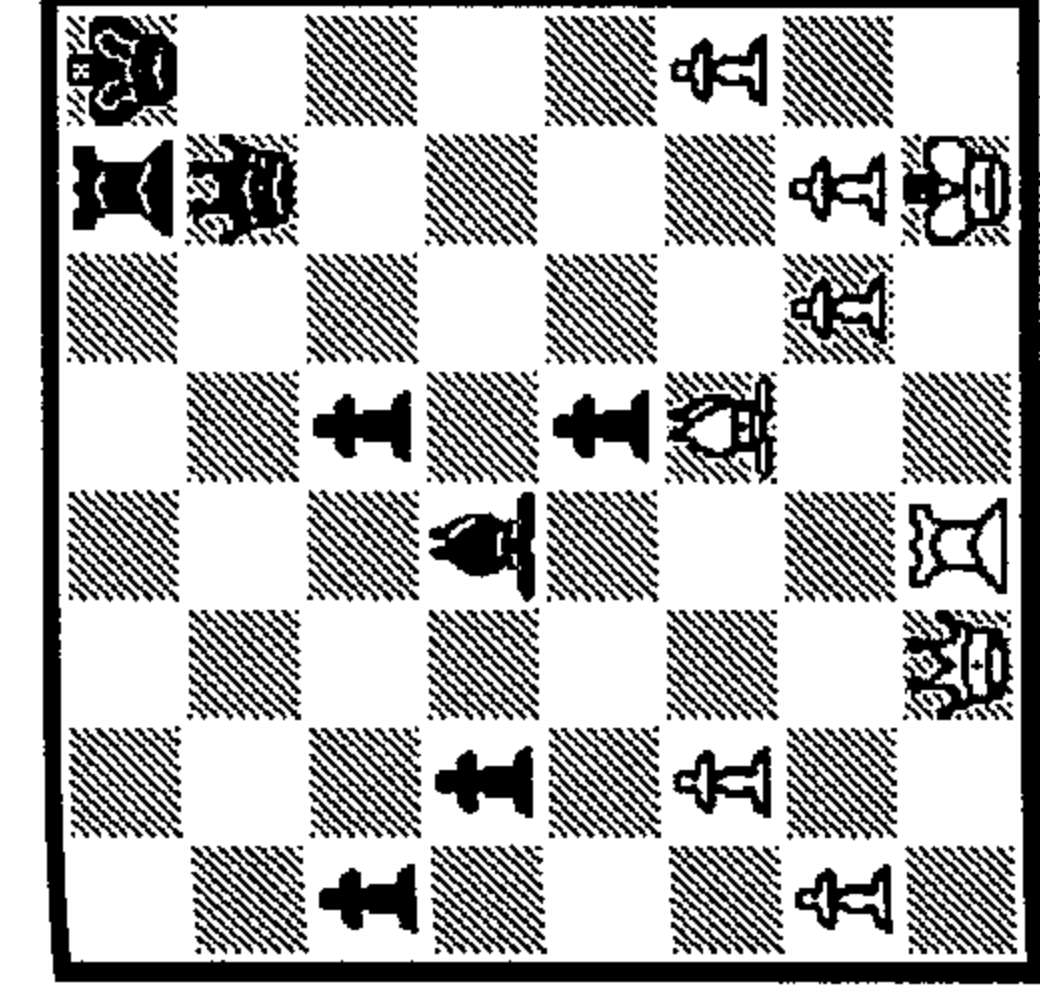
106 1...?

1\_ 2\_ 3\_



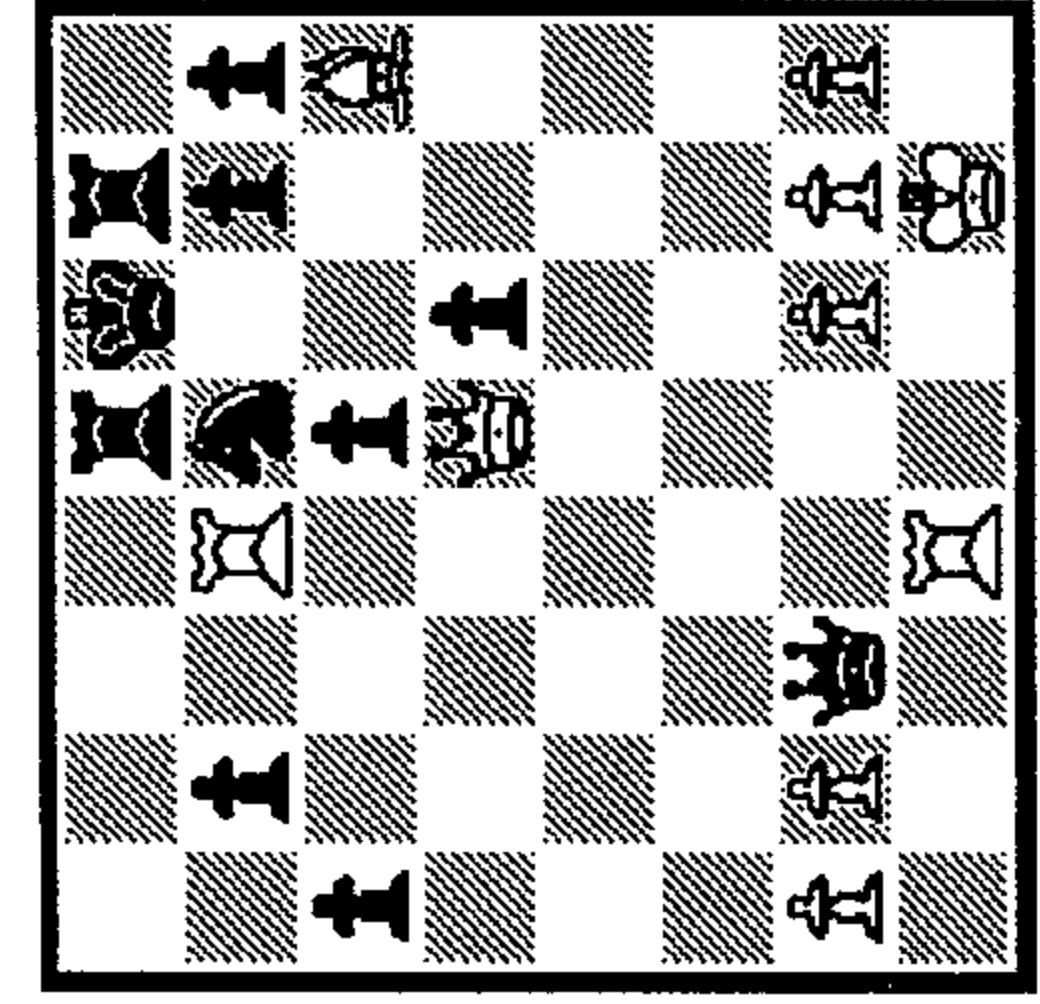
107 1.?

1\_ 2\_ 3\_



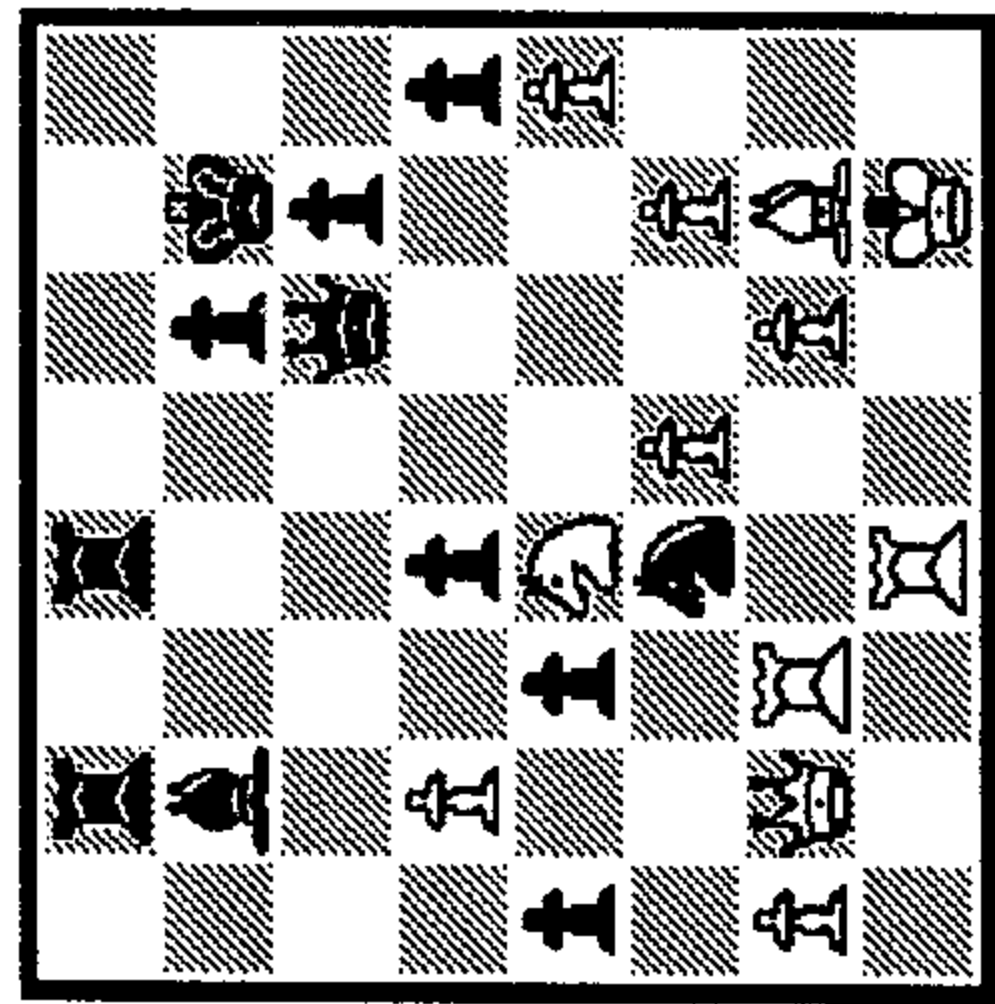
112 1.?

1\_ 2\_ 3\_



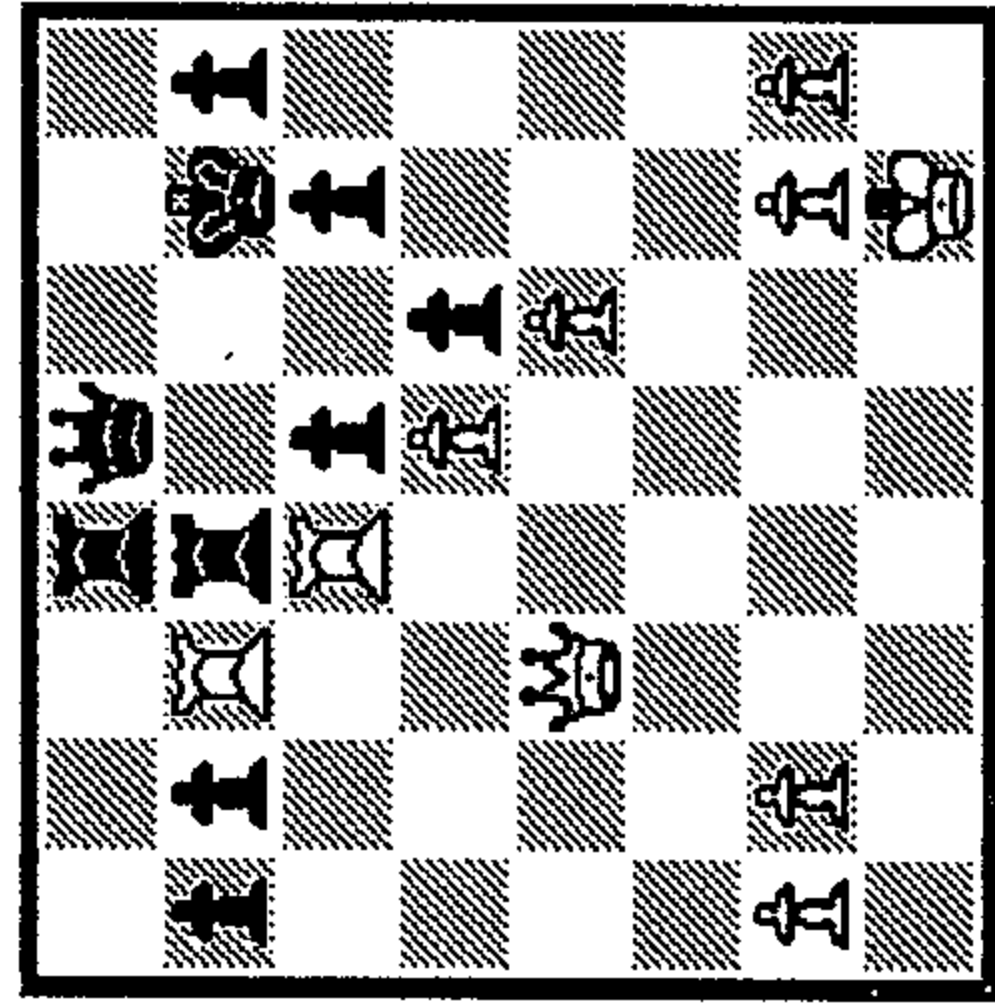
113 1.?

1\_ 2\_ 3\_



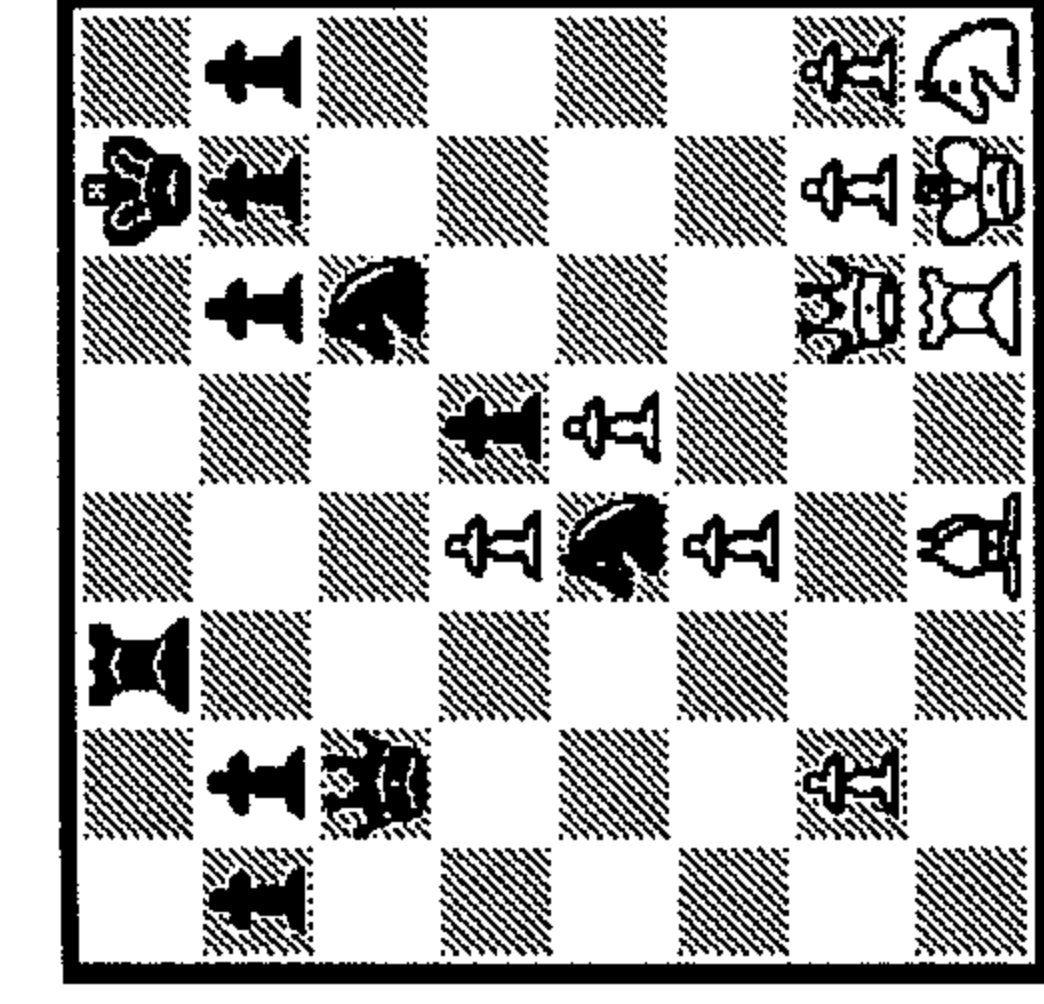
108 1.?

1\_ 2\_ 3\_



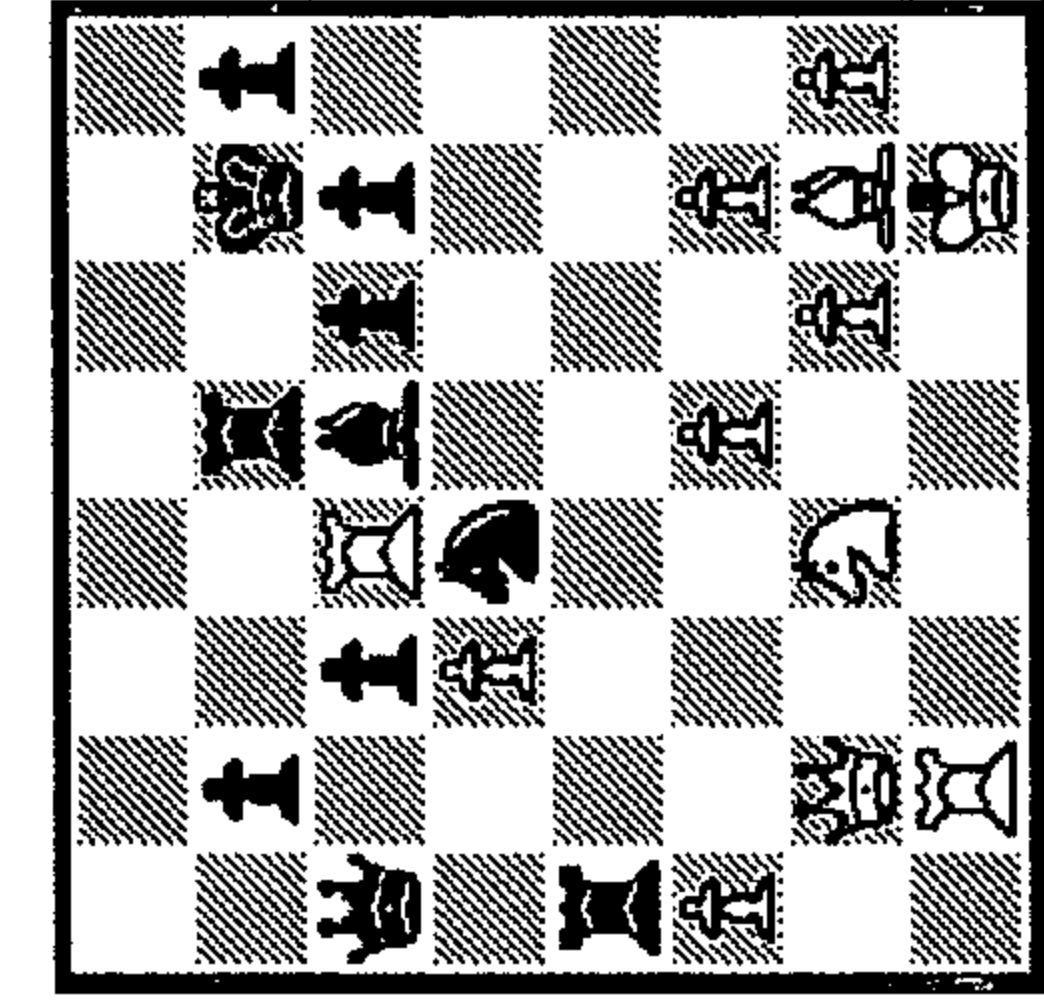
109 1.?

1\_ 2\_ 3\_



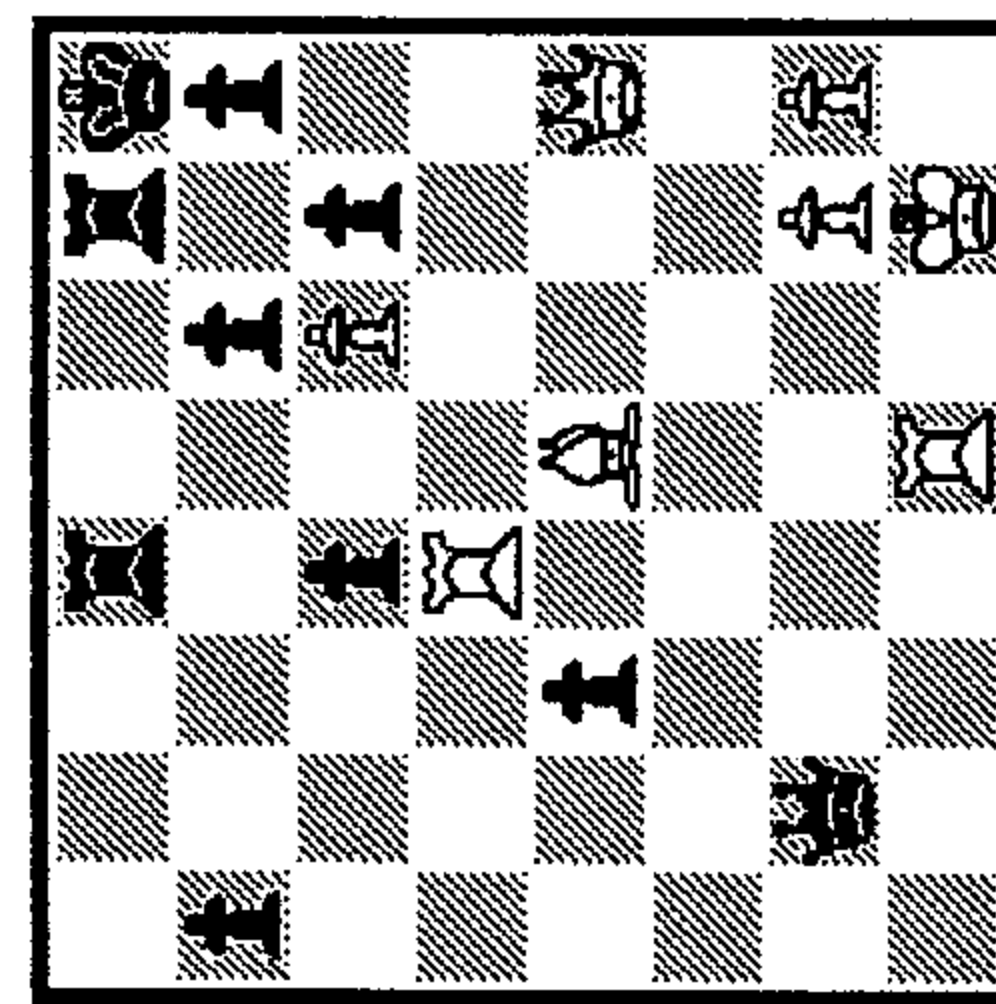
114 1...?

1\_ 2\_ 3\_



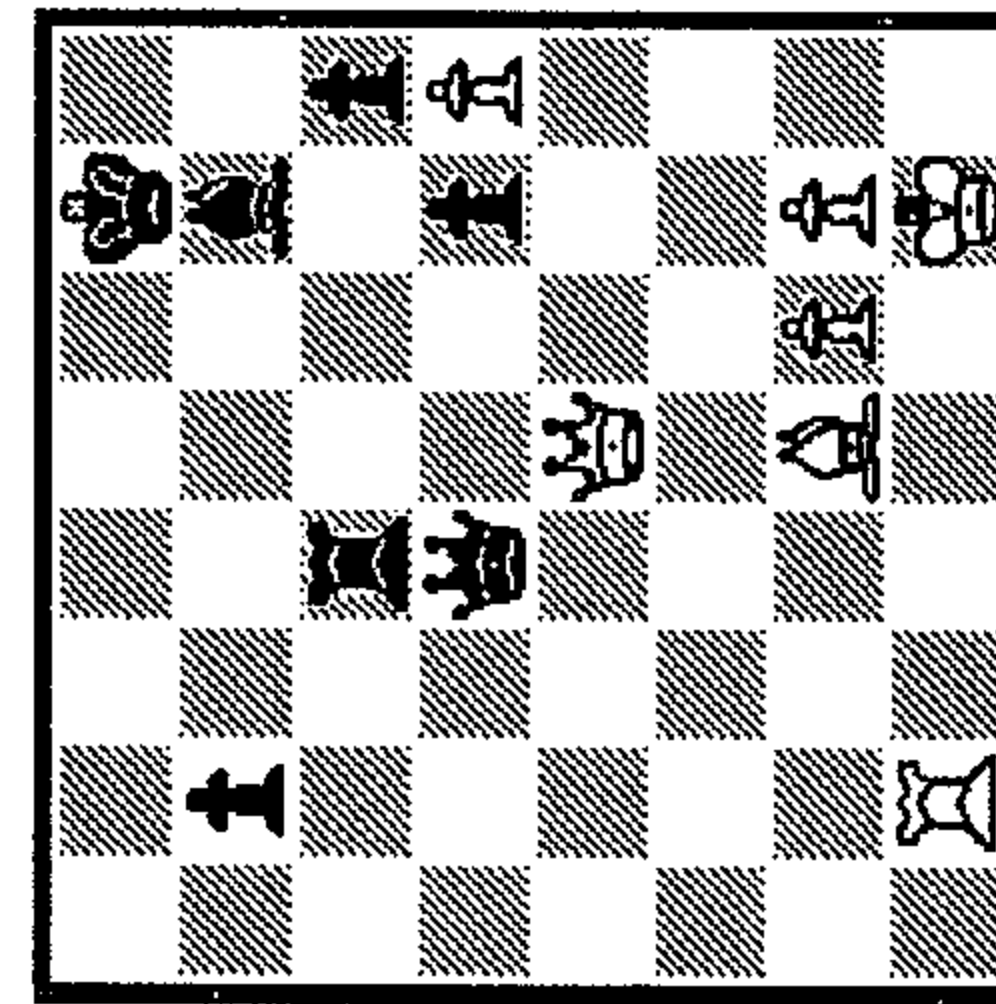
115 1.?

1\_ 2\_ 3\_



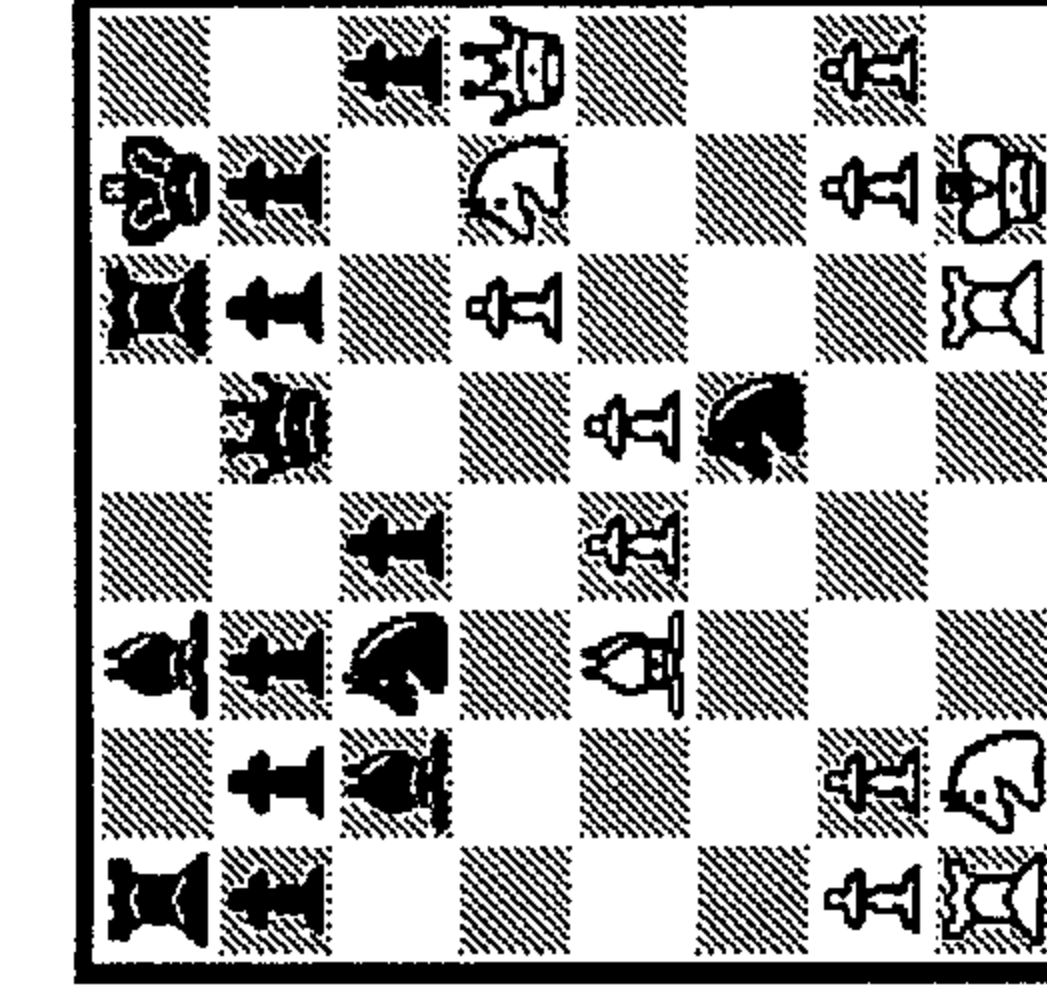
110 1.?

1\_ 2\_ 3\_



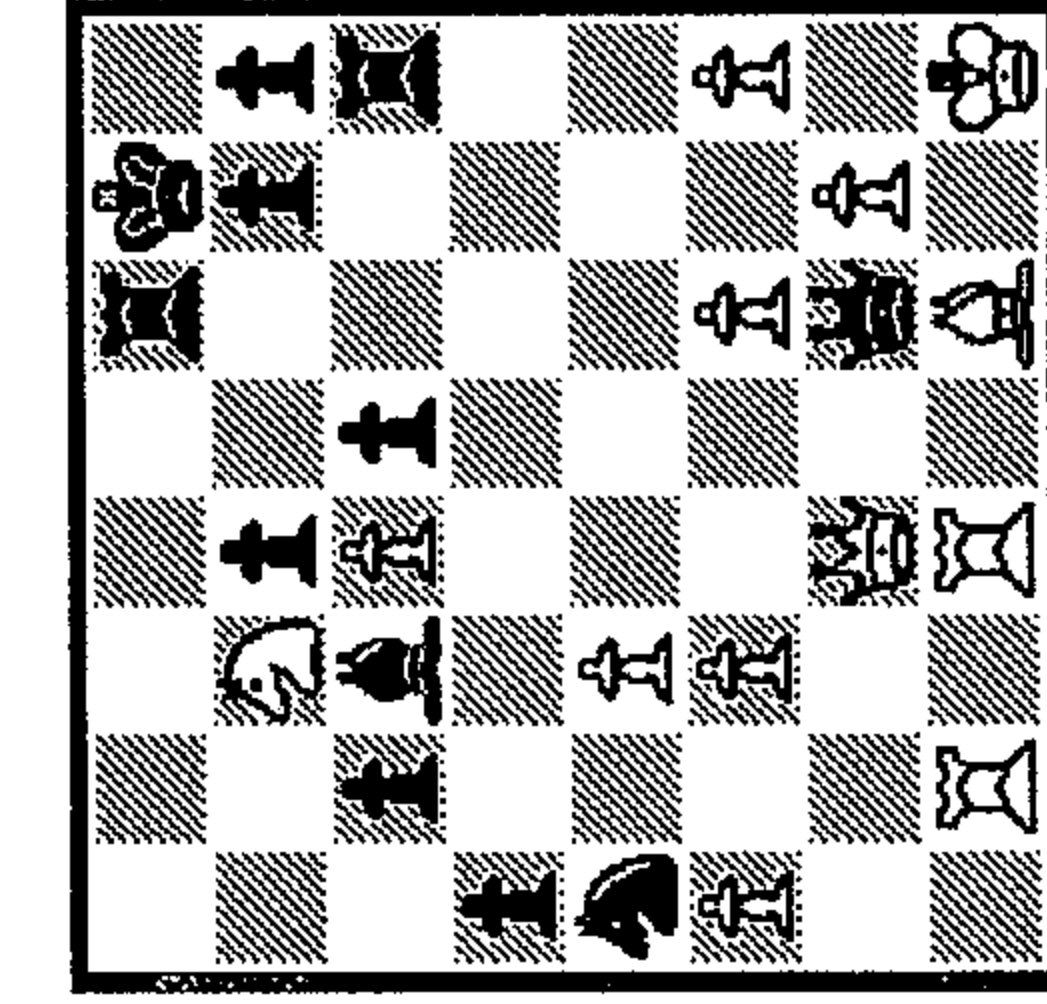
111 1.?

1\_ 2\_ 3\_



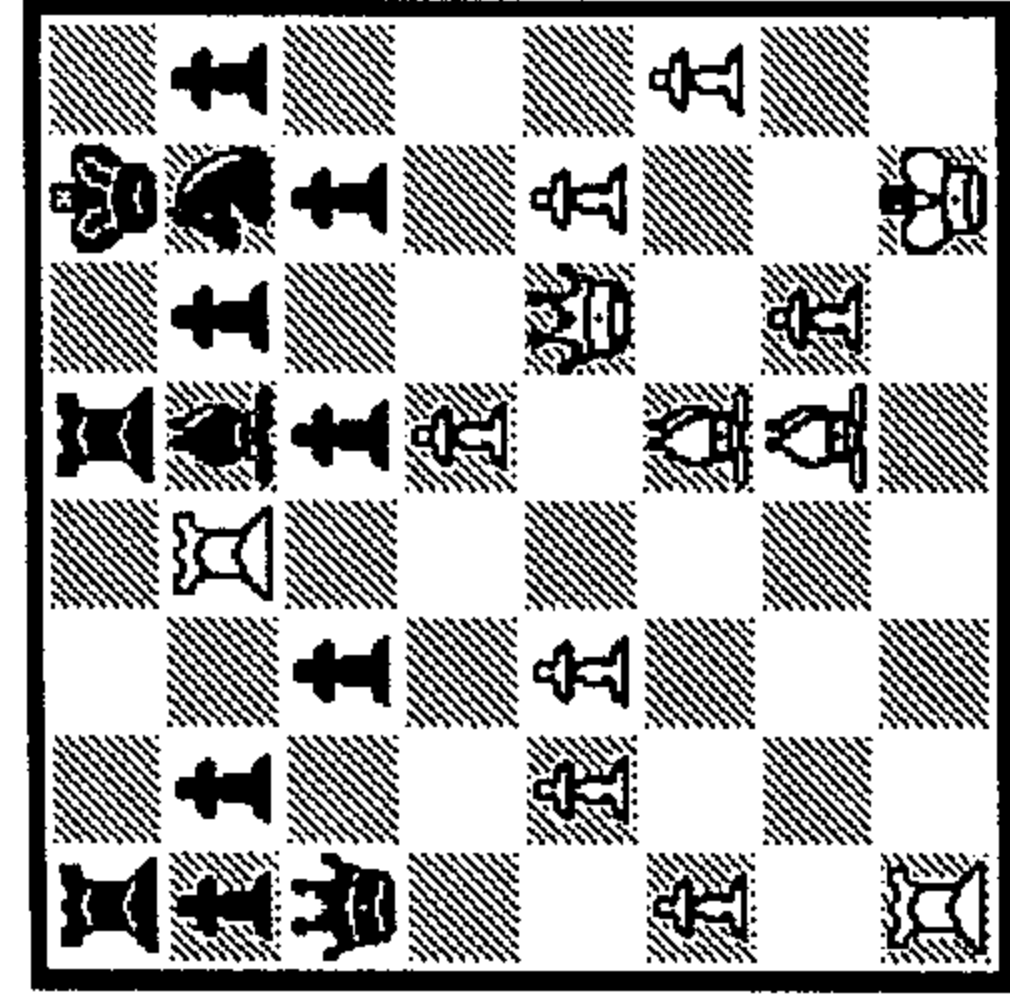
116 1.?

1\_ 2\_ 3\_



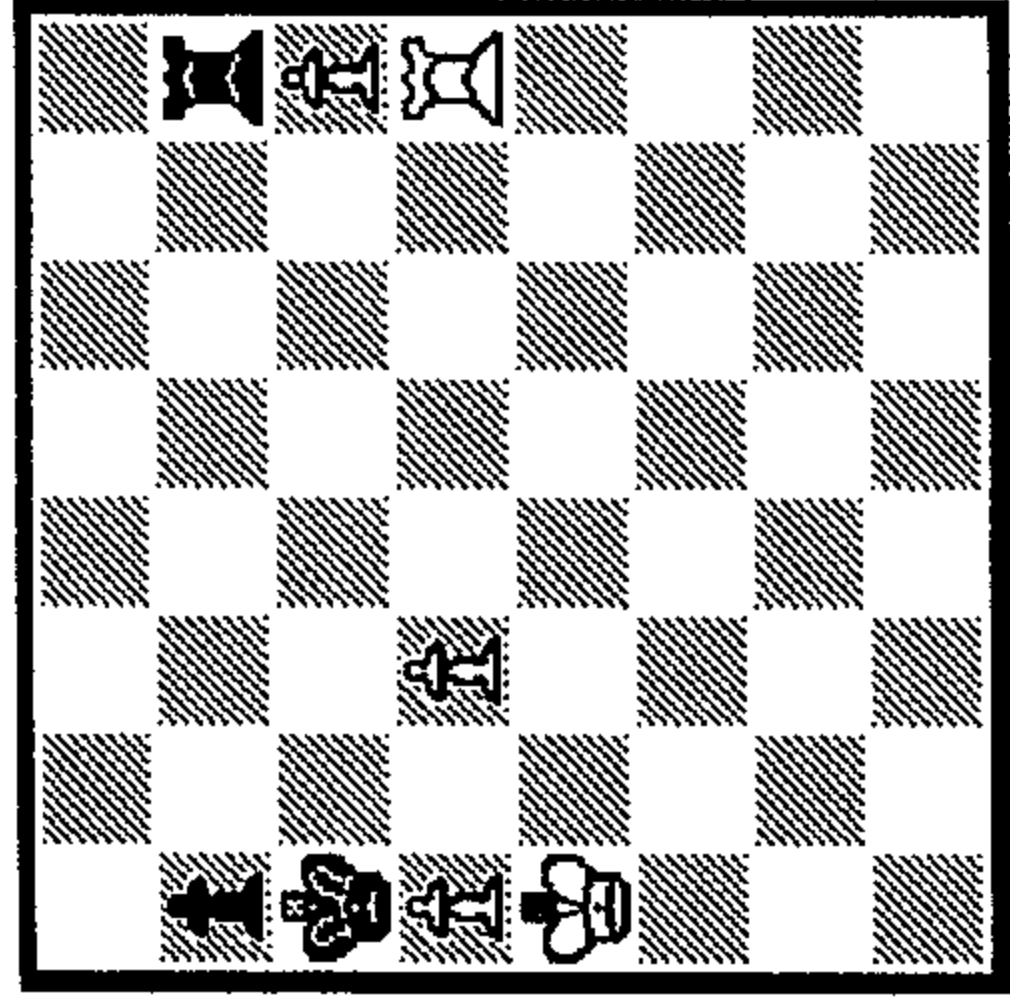
117 1...?

1\_ 2\_ 3\_



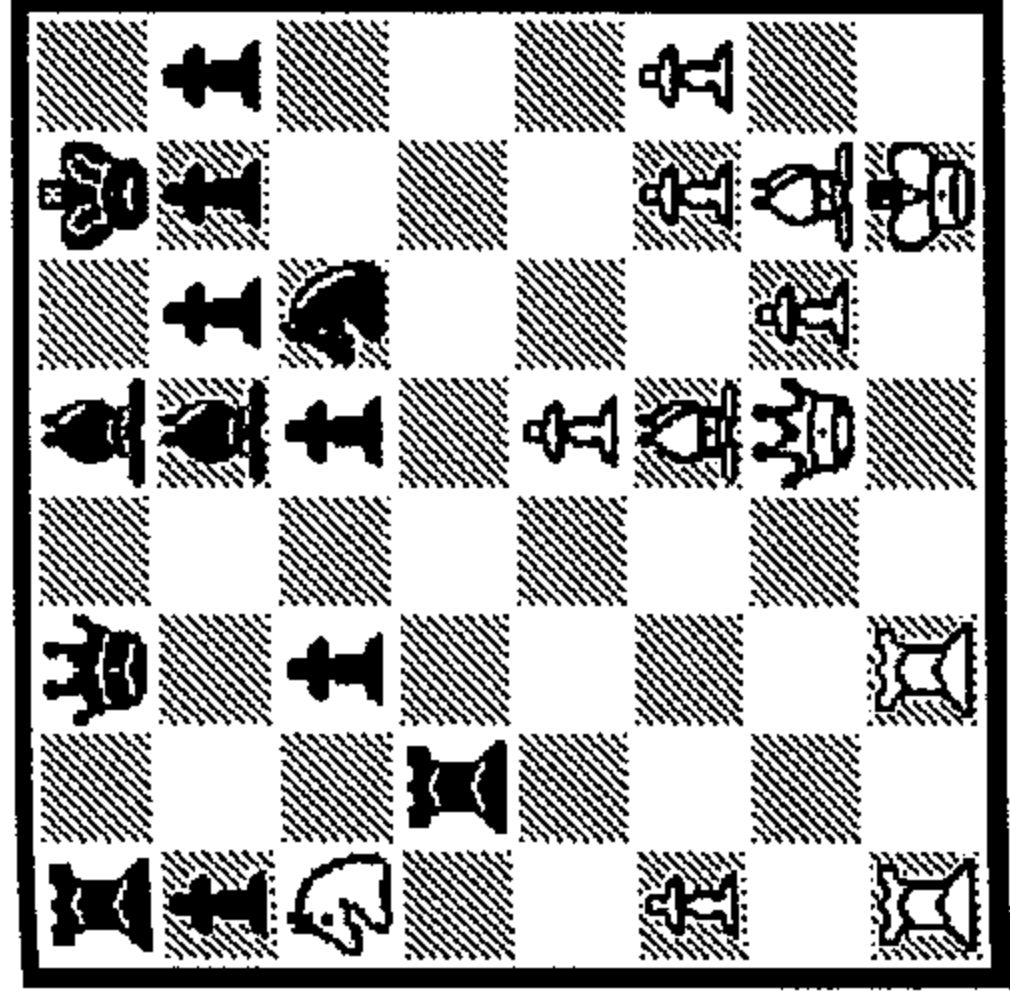
118 1.?

1\_ 2\_ 3\_



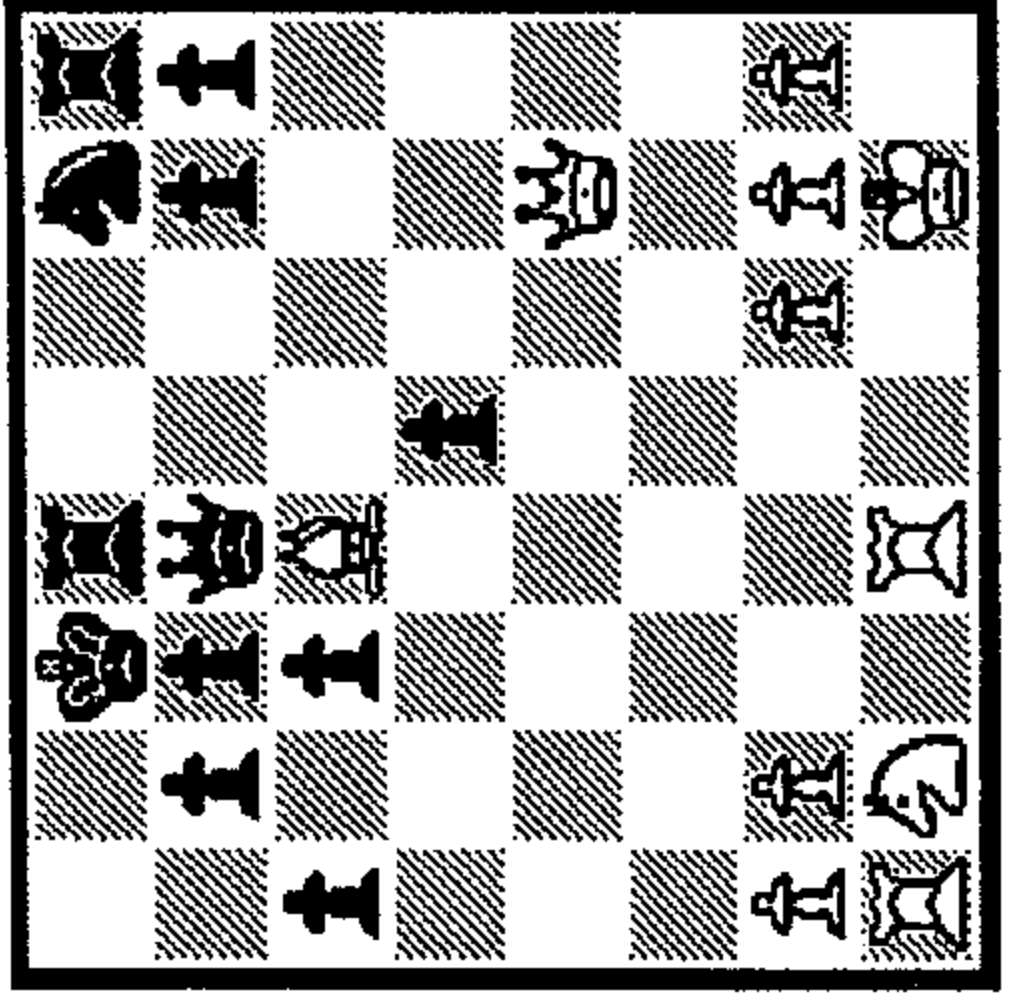
119 1.?

1\_ 2\_ 3\_



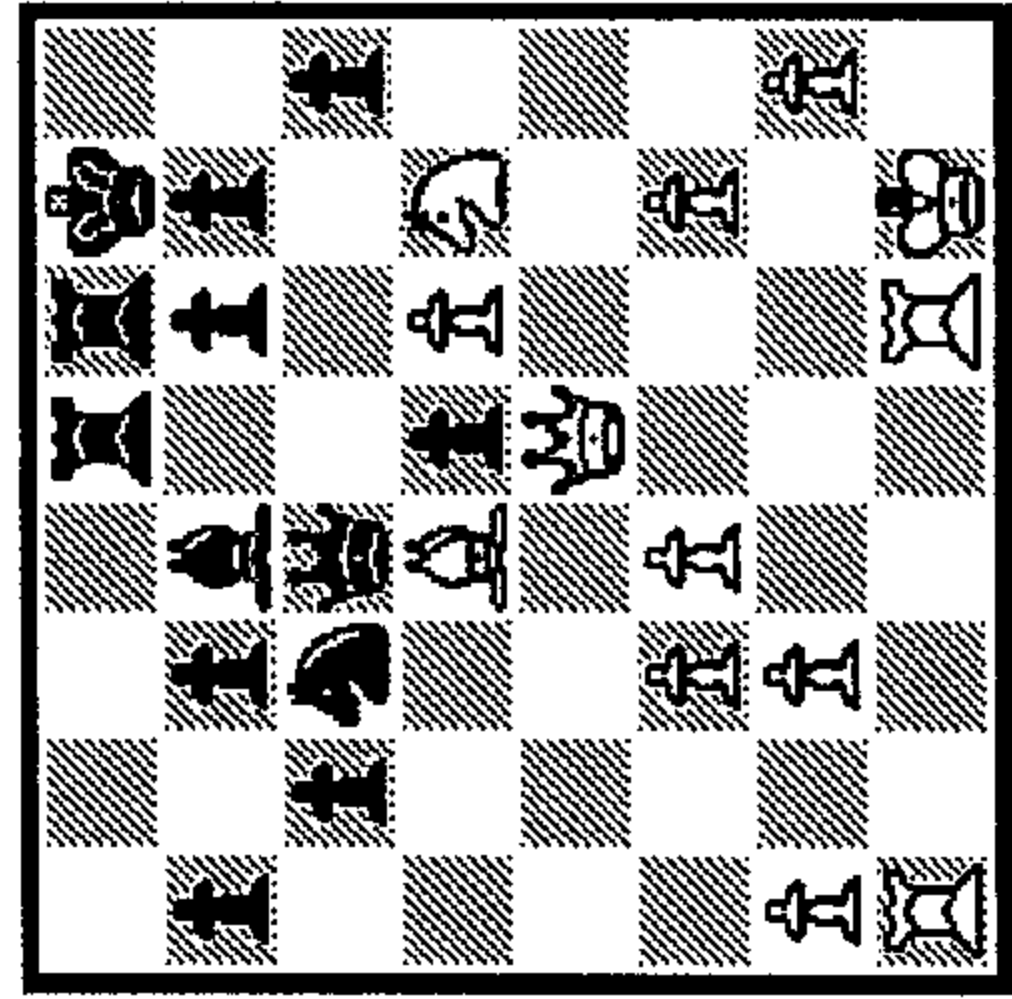
124 1.?

1\_ 2\_ 3\_



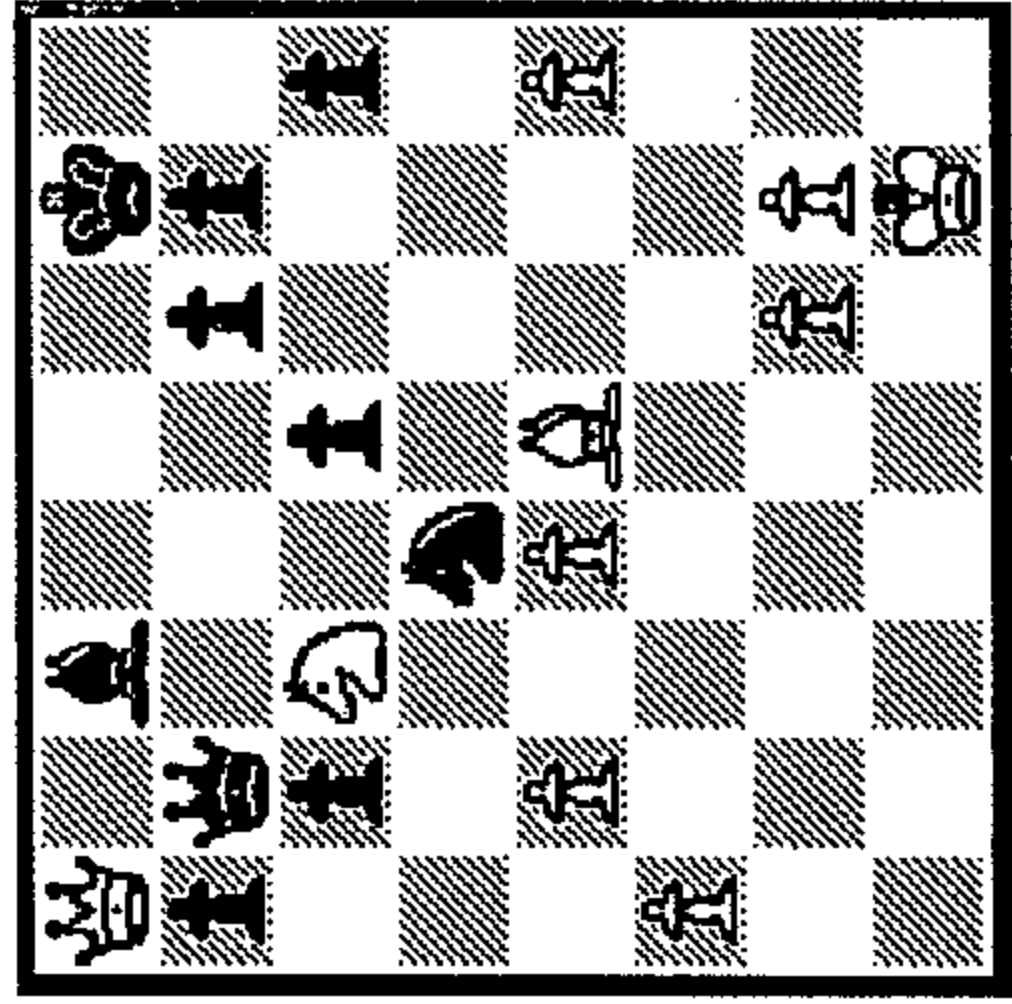
125 1.?

1\_ 2\_ 3\_



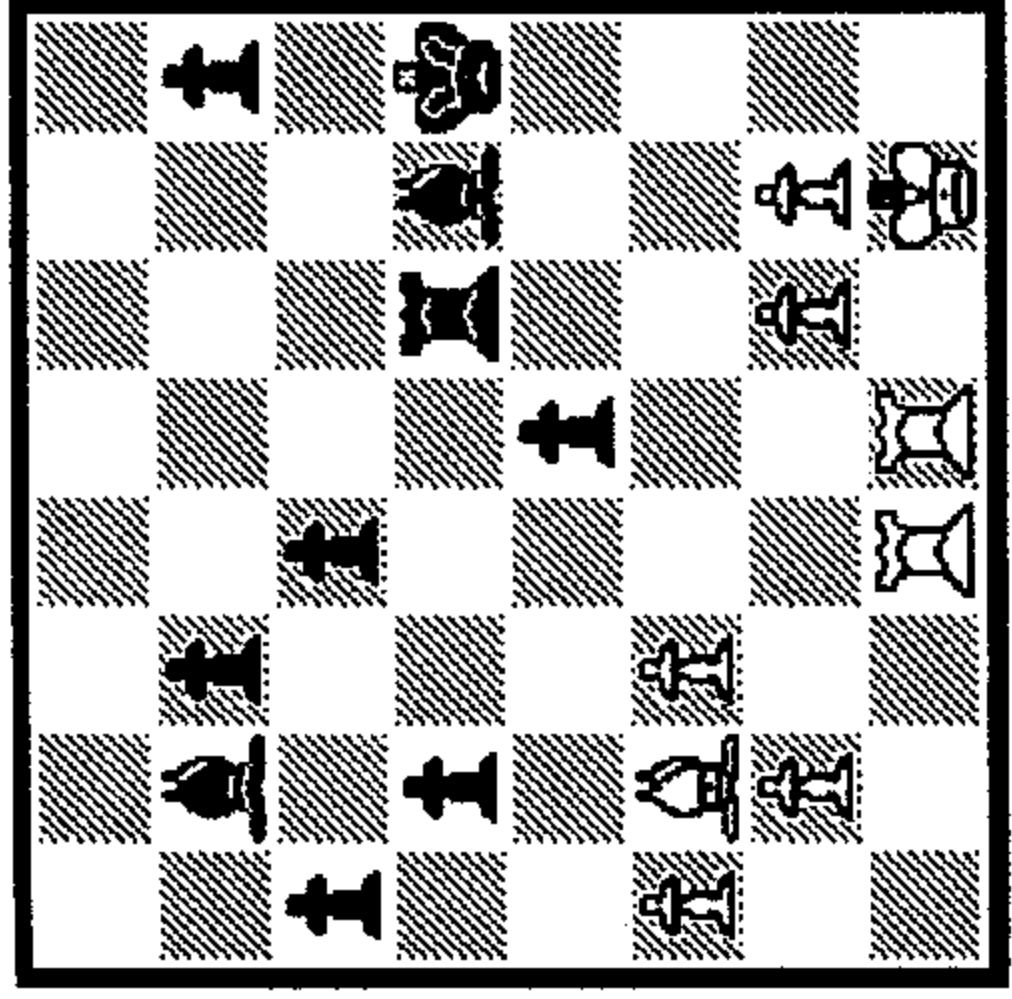
120 1.?

1\_ 2\_ 3\_



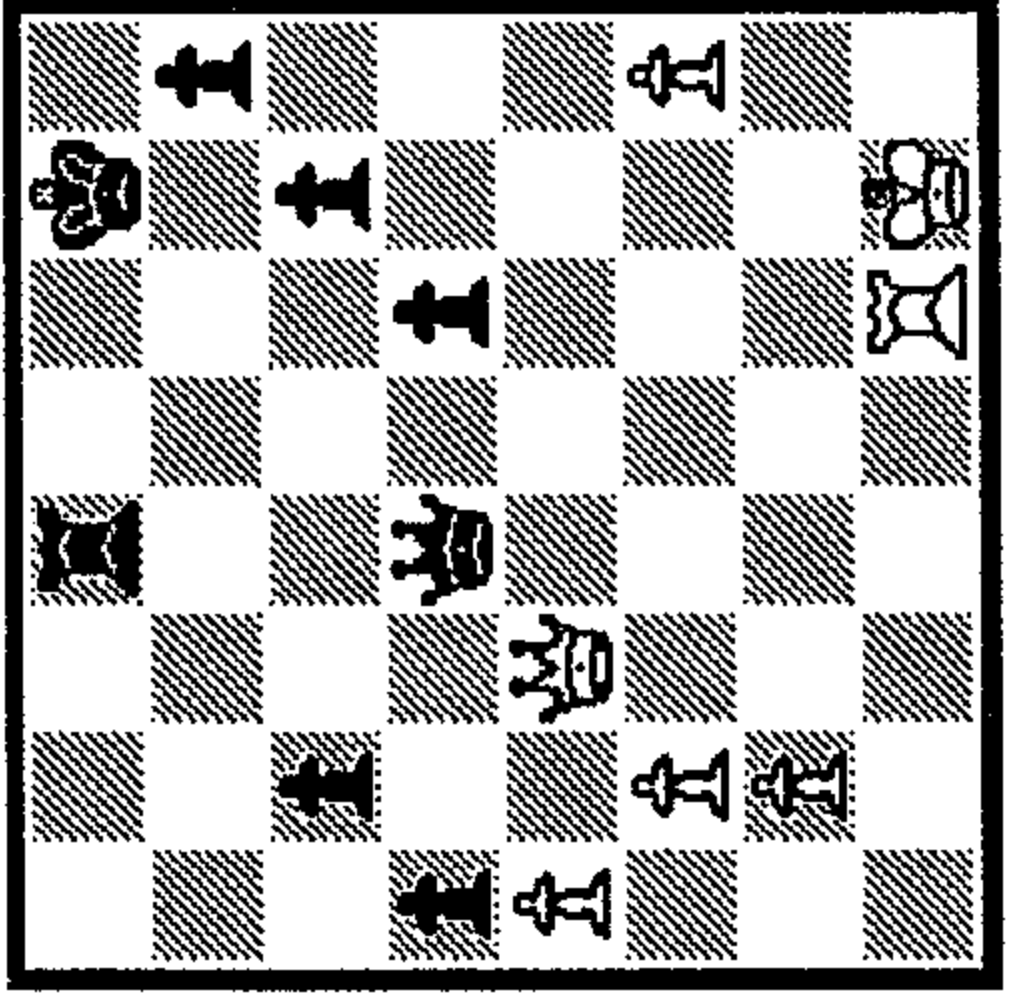
121 1.?

1\_ 2\_ 3\_



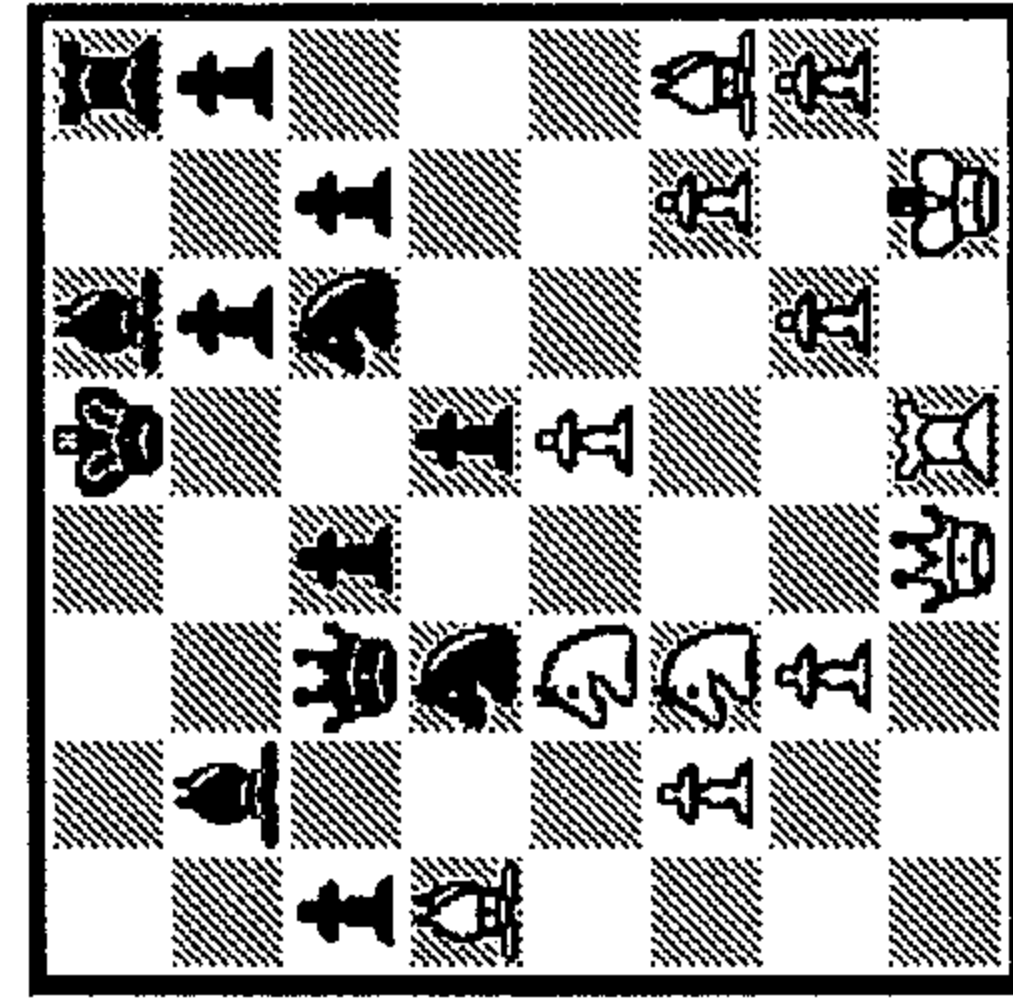
126 1.?

1\_ 2\_ 3\_



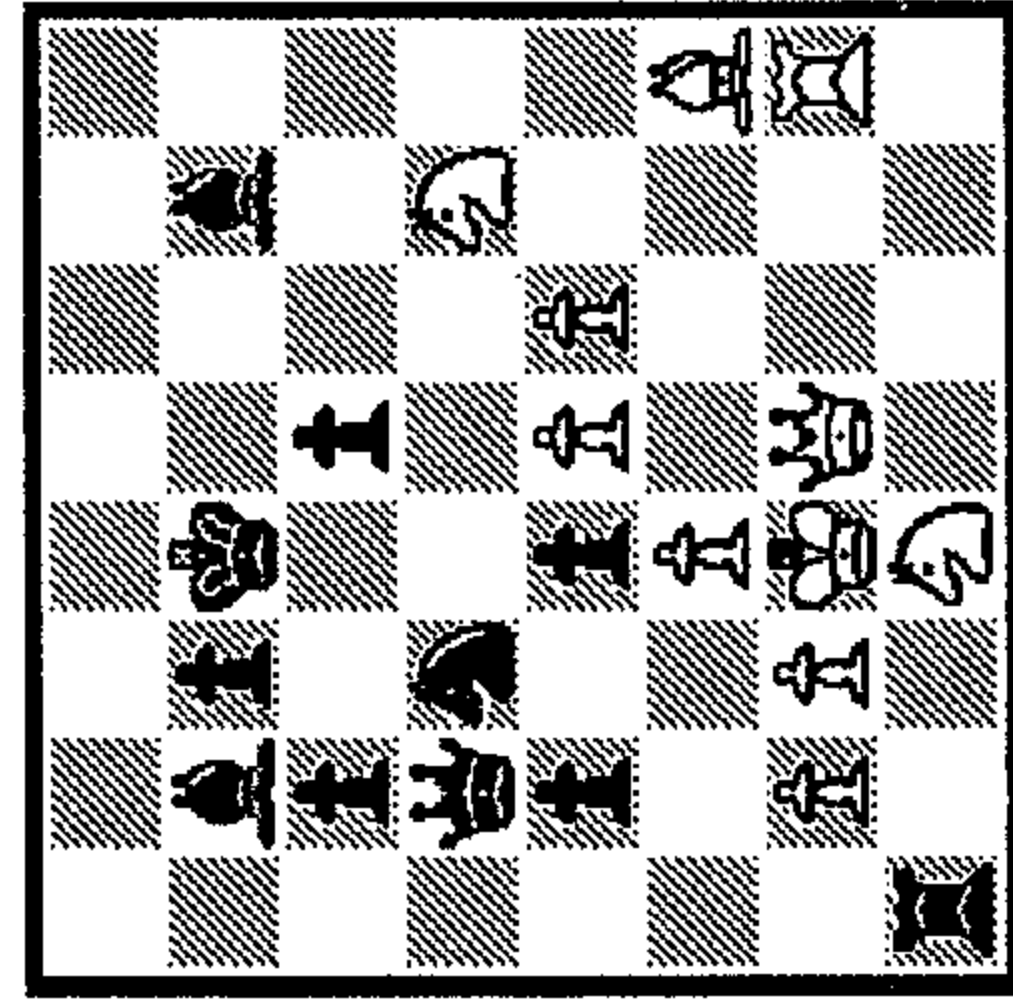
127 1.?

1\_ 2\_ 3\_



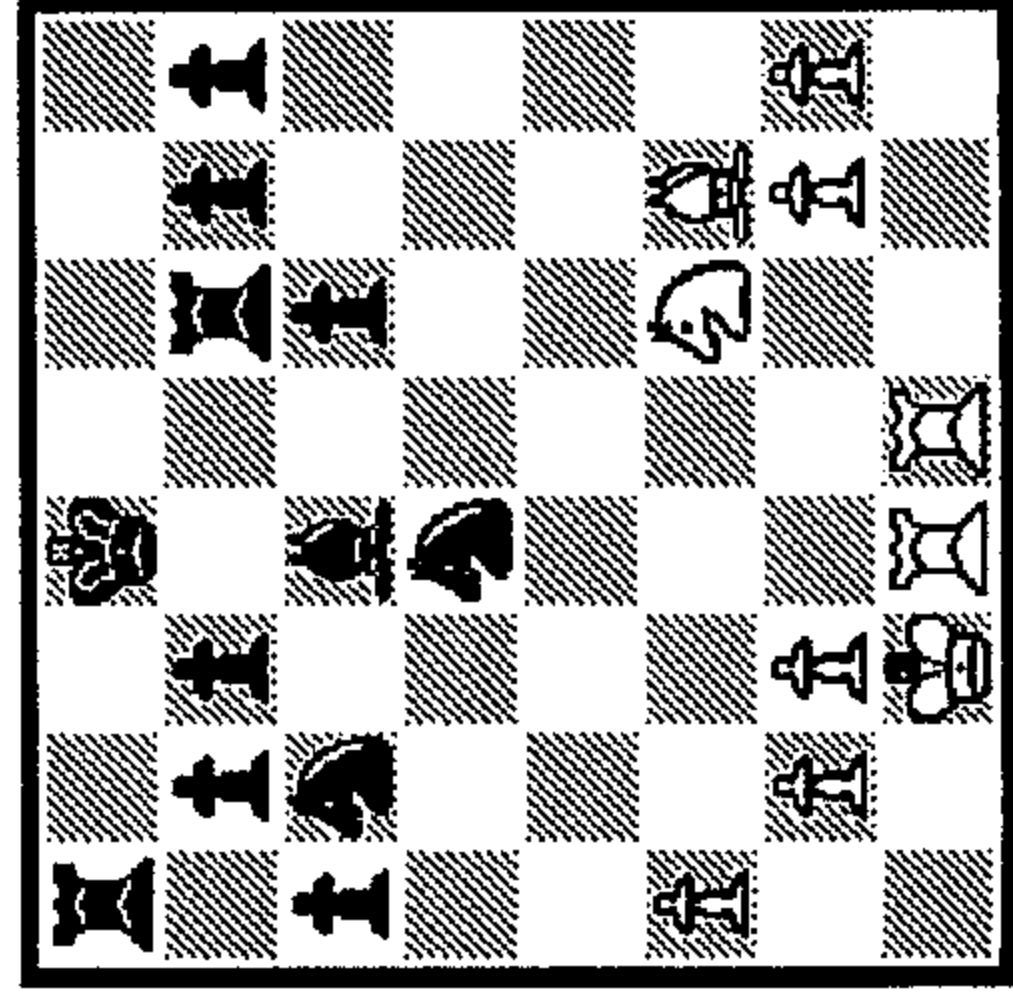
122 1.?

1\_ 2\_ 3\_



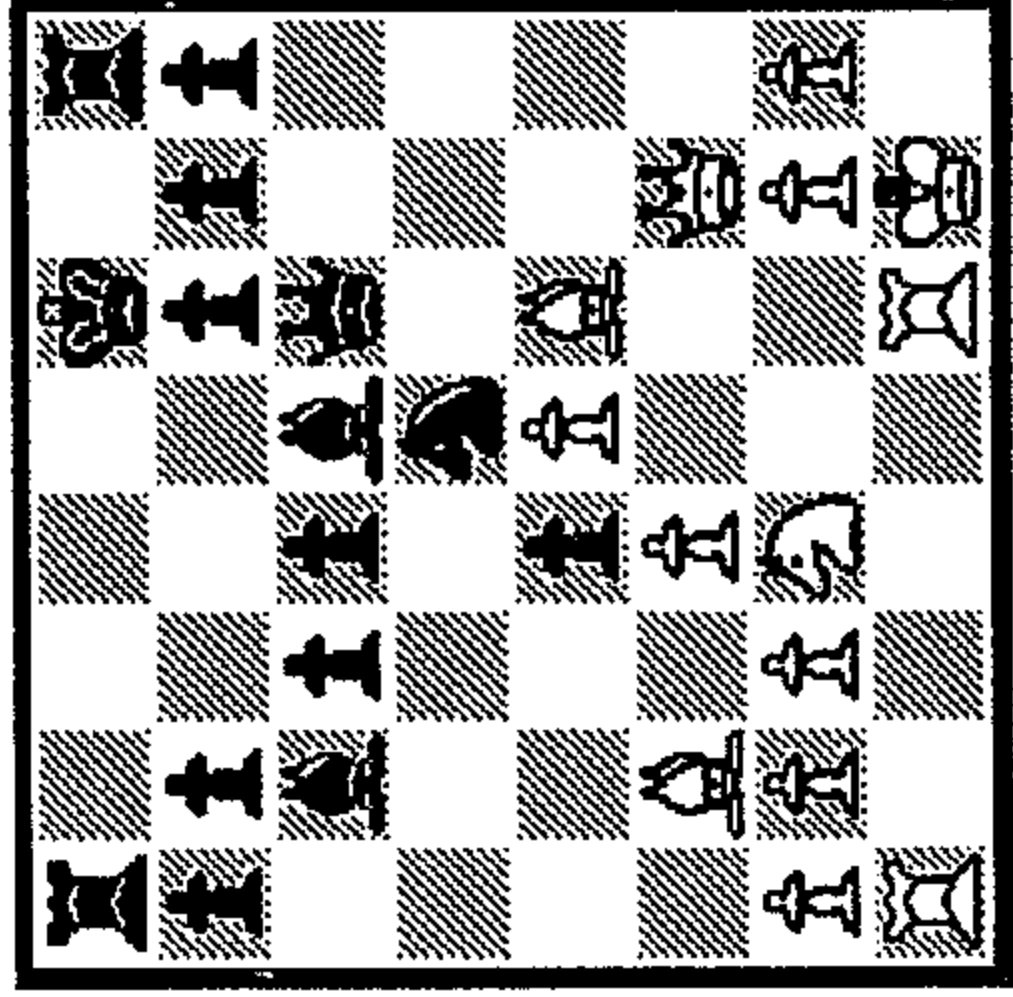
123 1.?

1\_ 2\_ 3\_



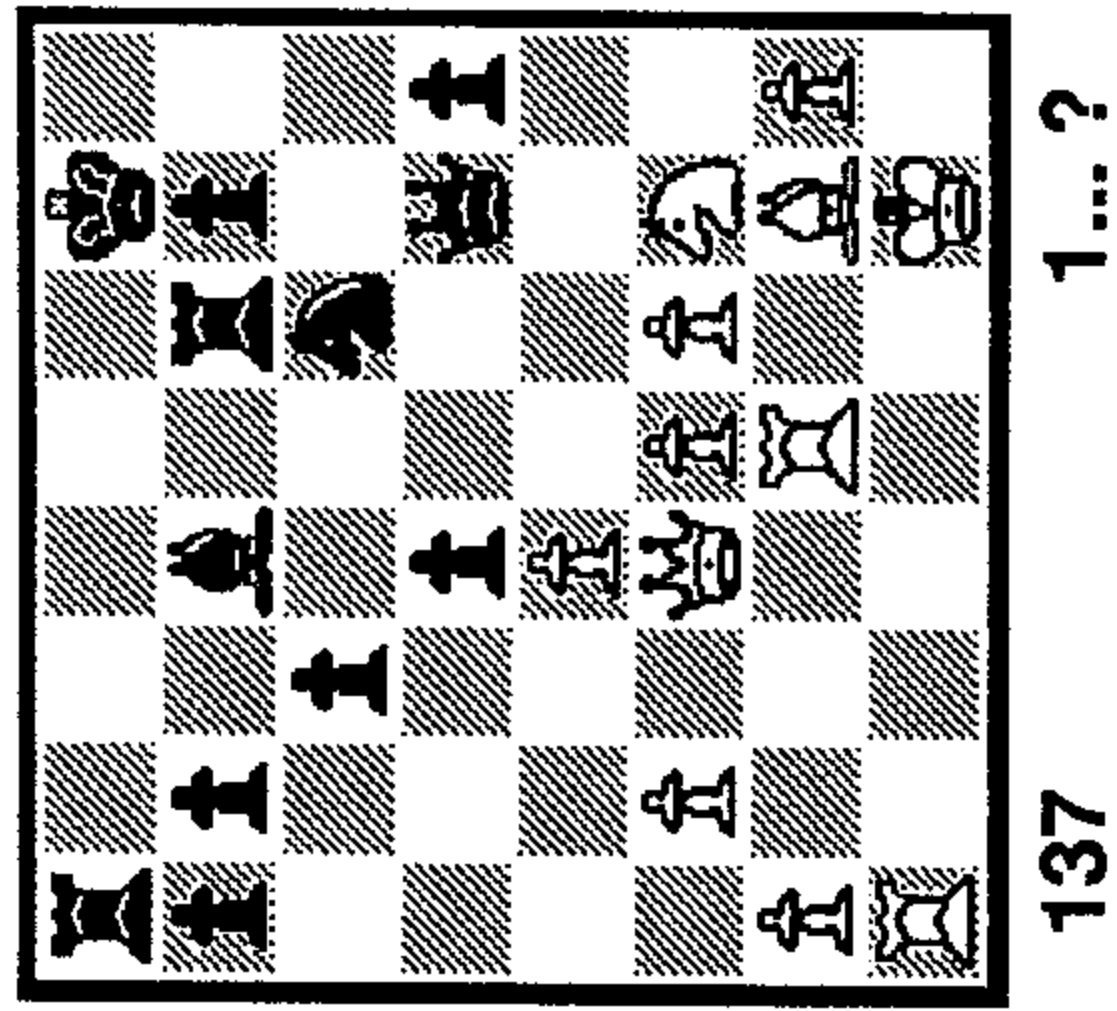
128 1.?

1\_ 2\_ 3\_



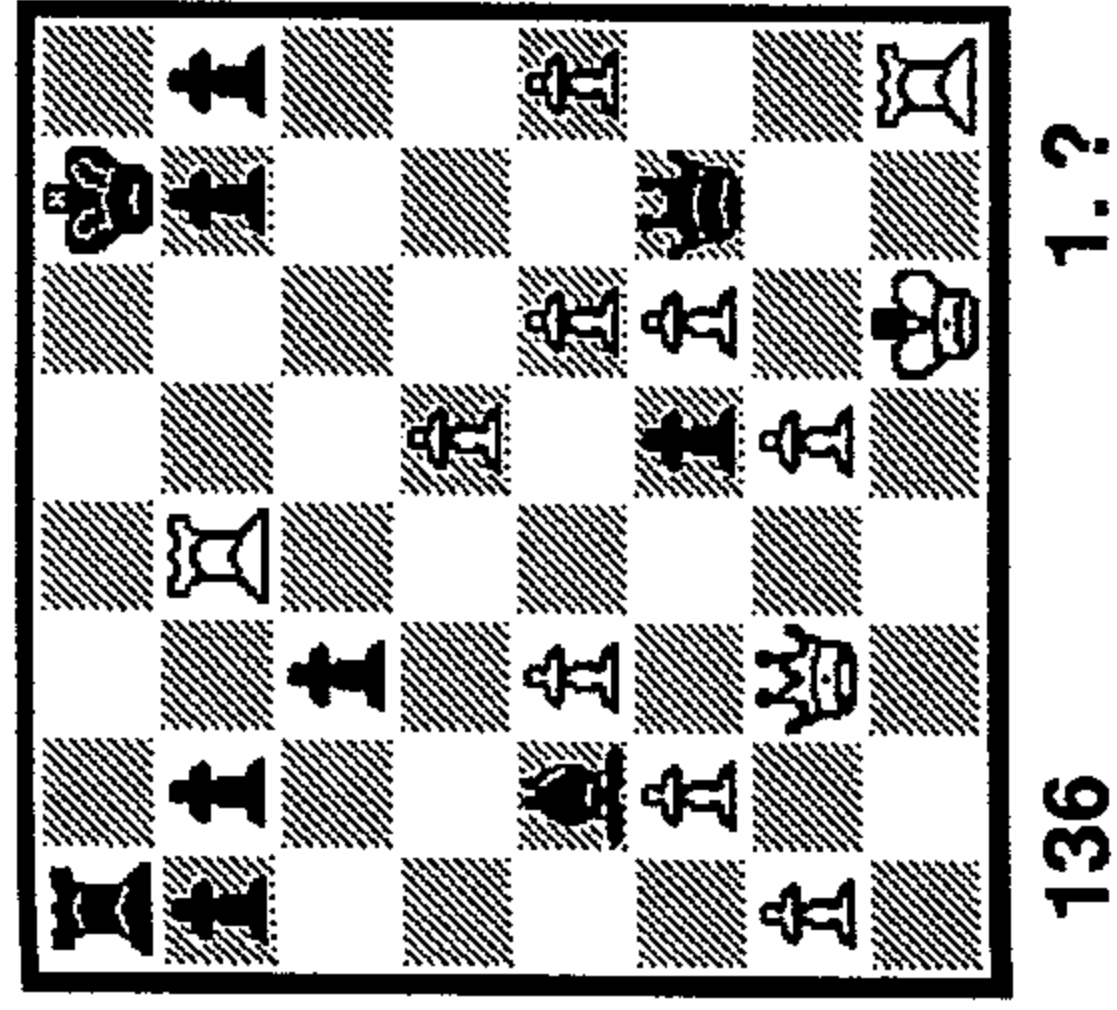
129 1.?

1\_ 2\_ 3\_



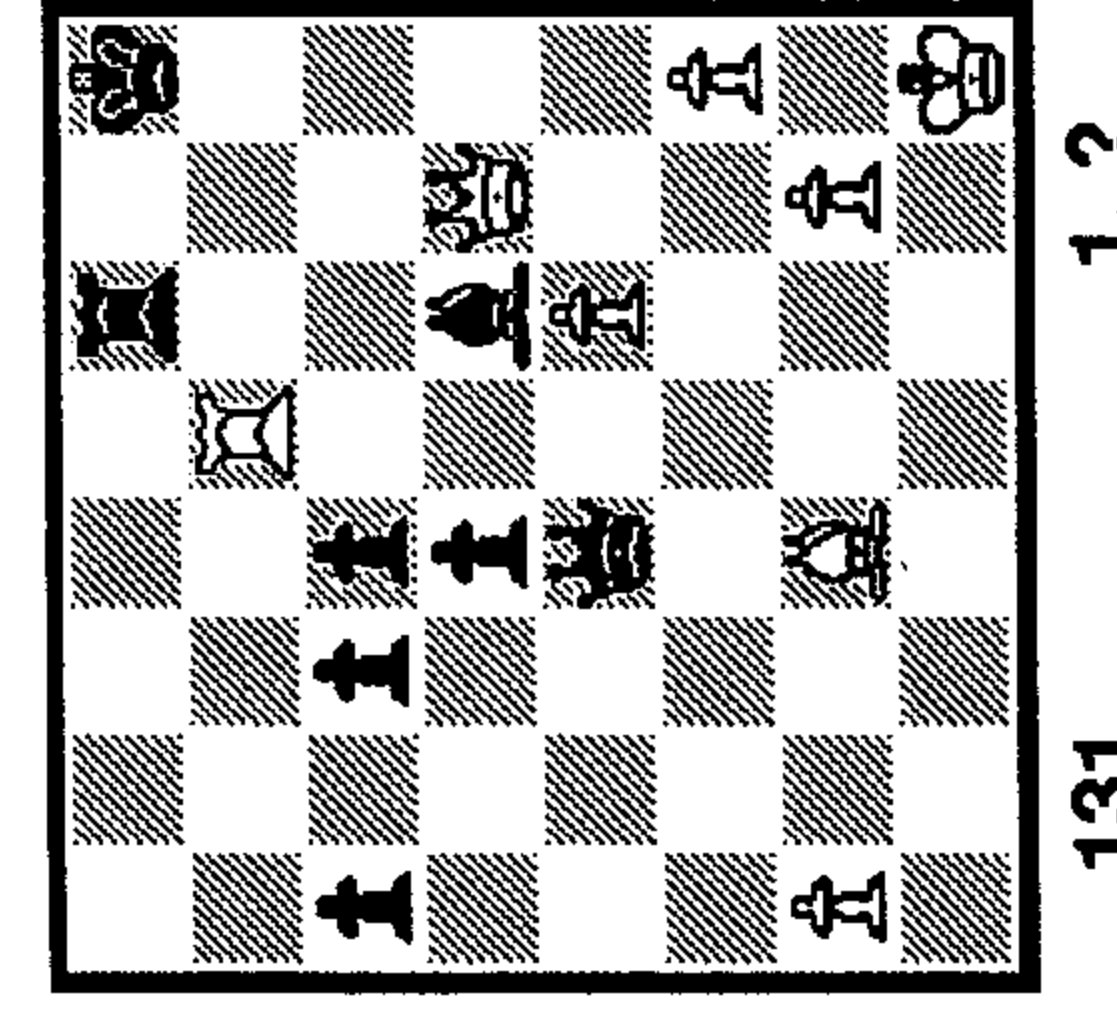
1\_   
 2\_   
 3\_

137 1...?



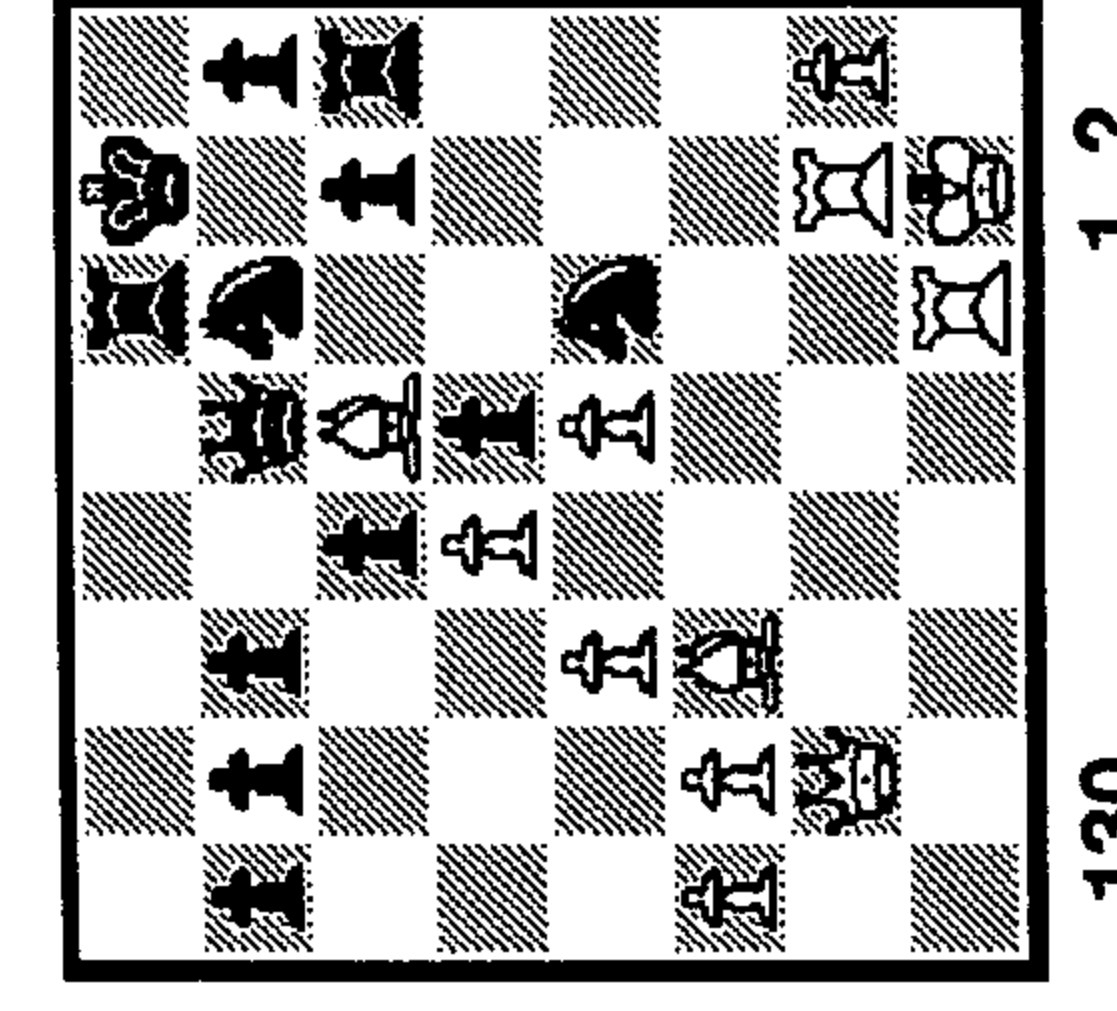
1\_   
 2\_   
 3\_

136 1.?



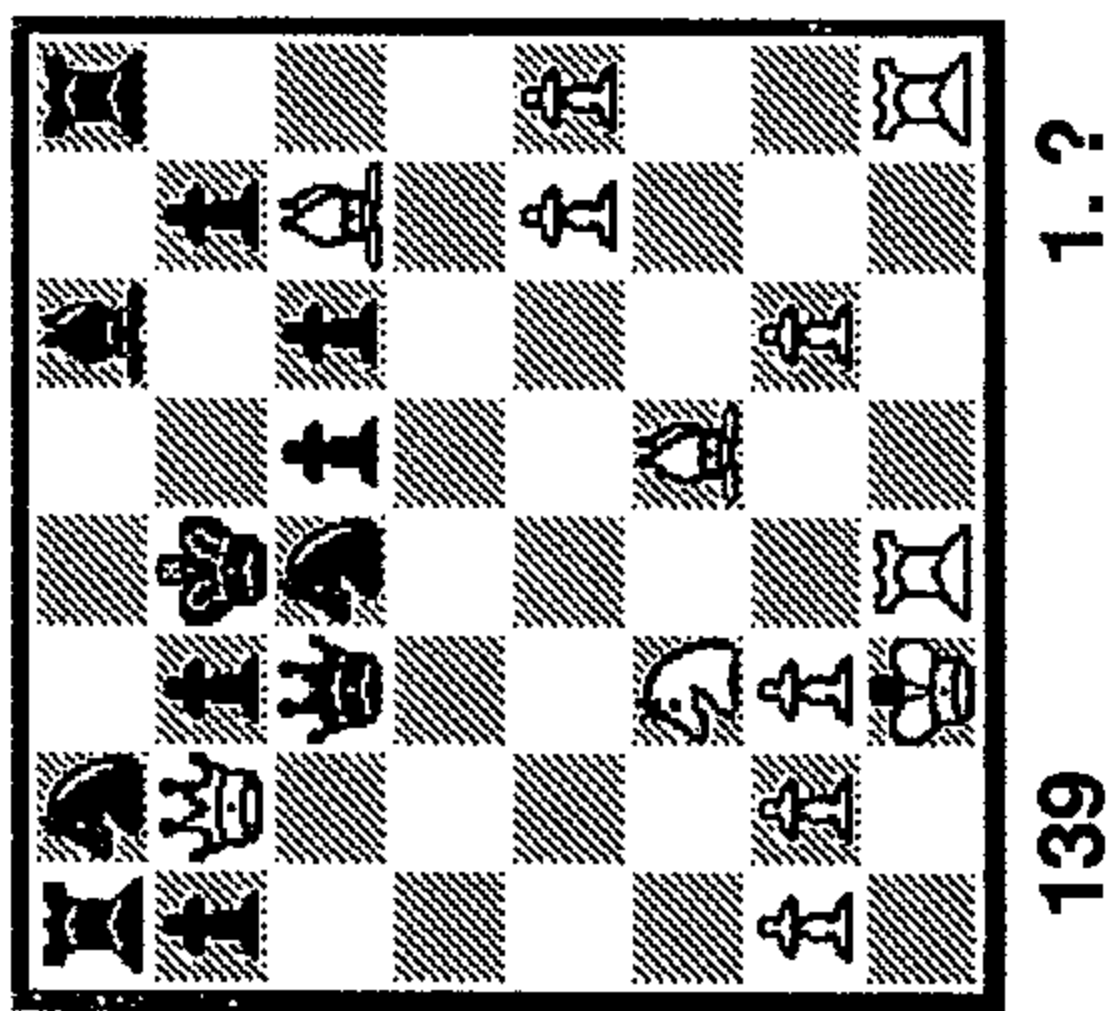
1\_   
 2\_   
 3\_

131 1.?



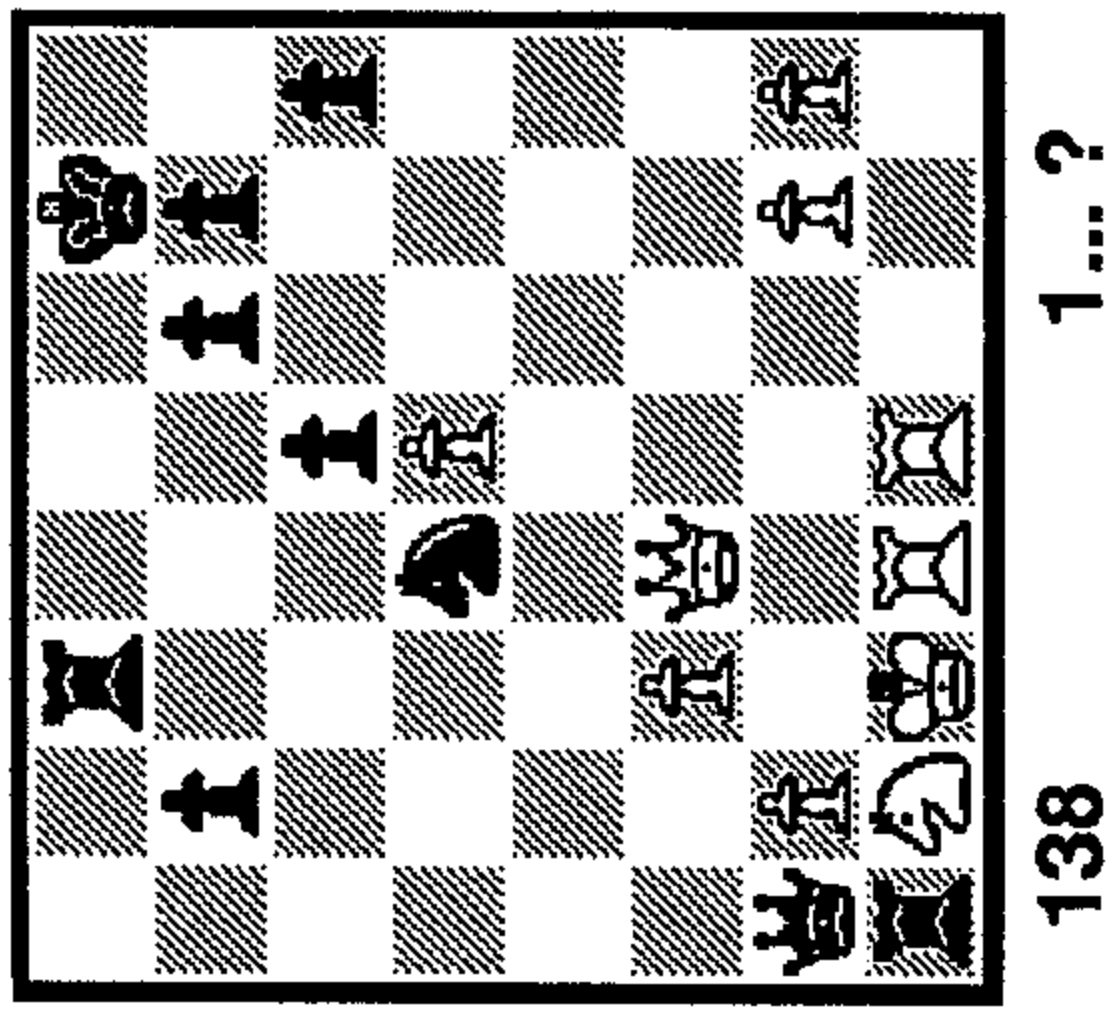
1\_   
 2\_   
 3\_

130 1.?



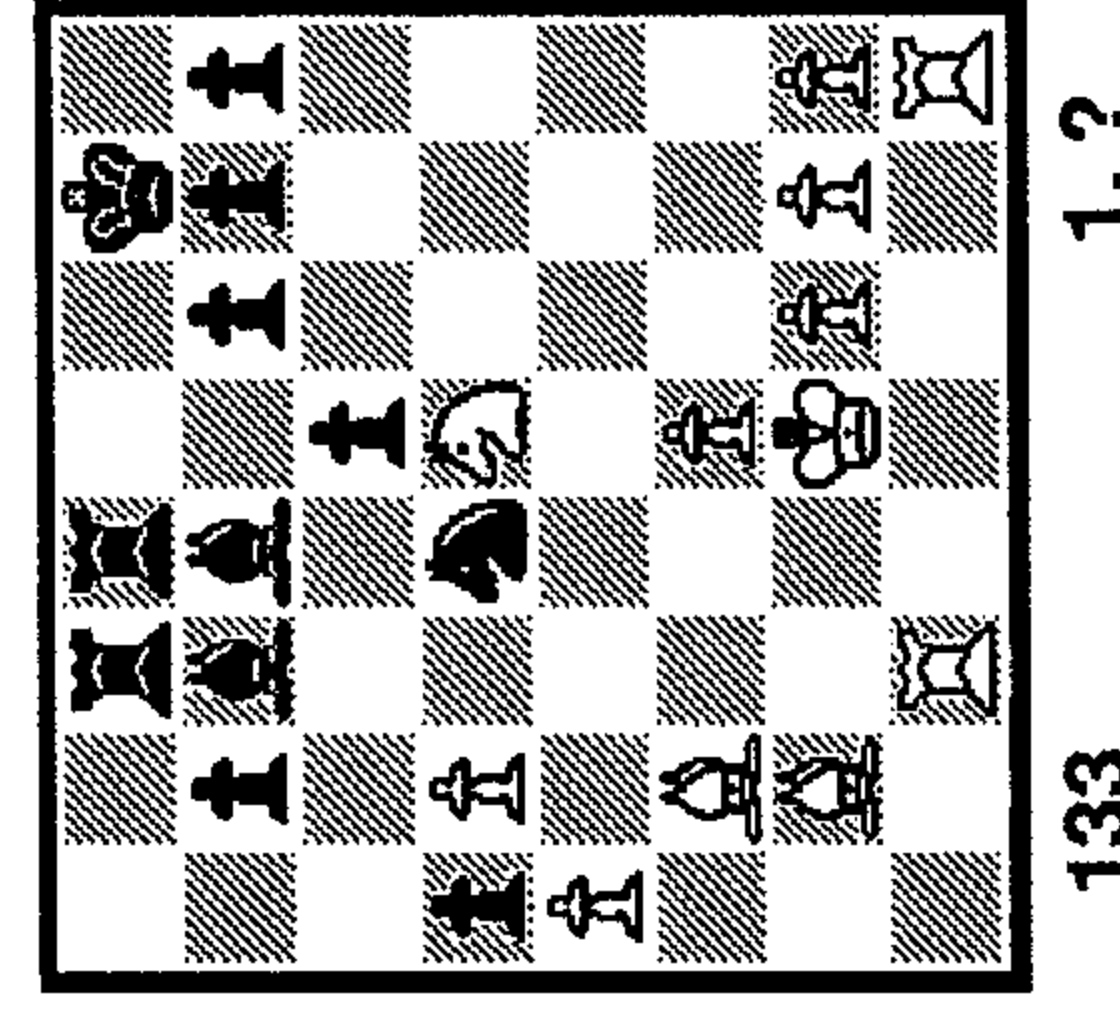
1\_   
 2\_   
 3\_

139 1.?



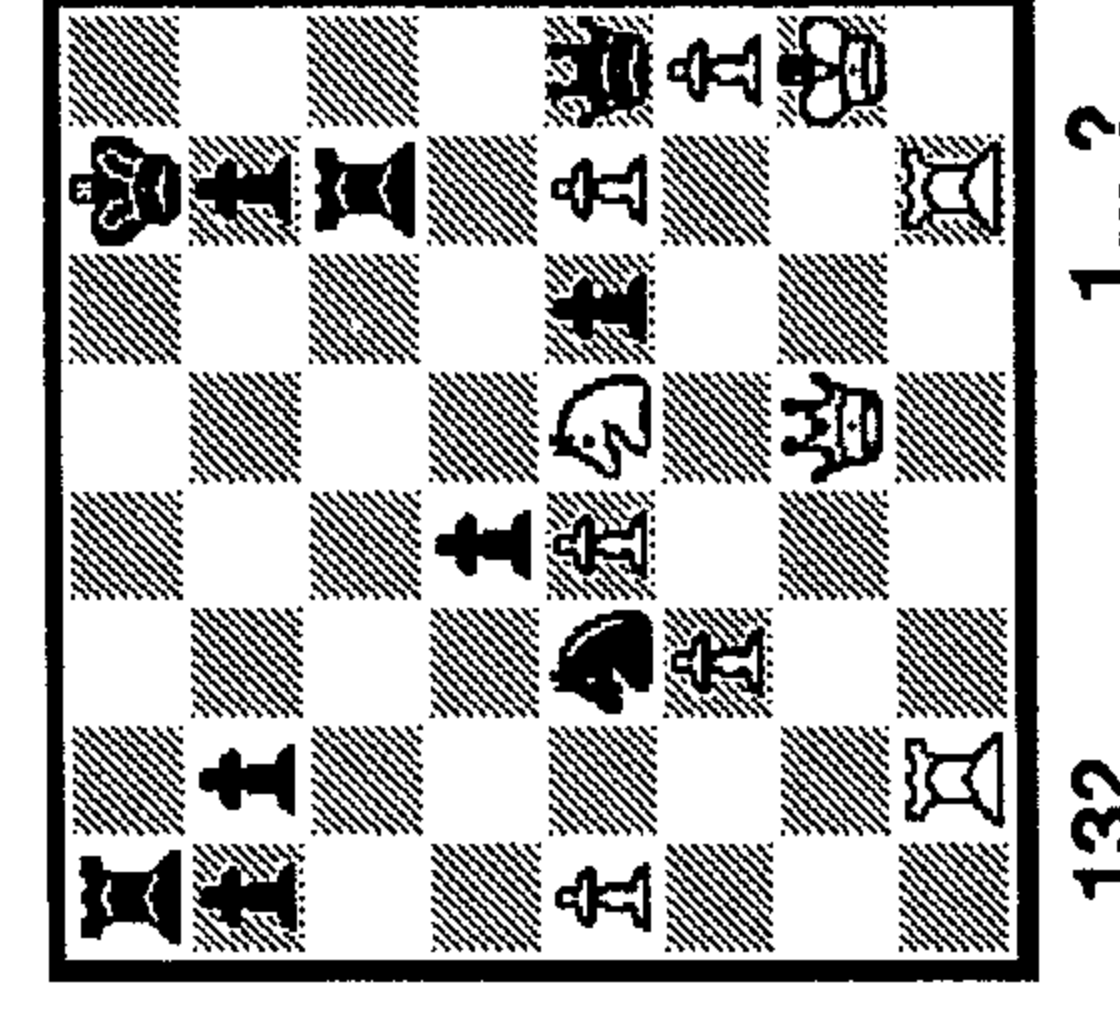
1\_   
 2\_   
 3\_

138 1...?



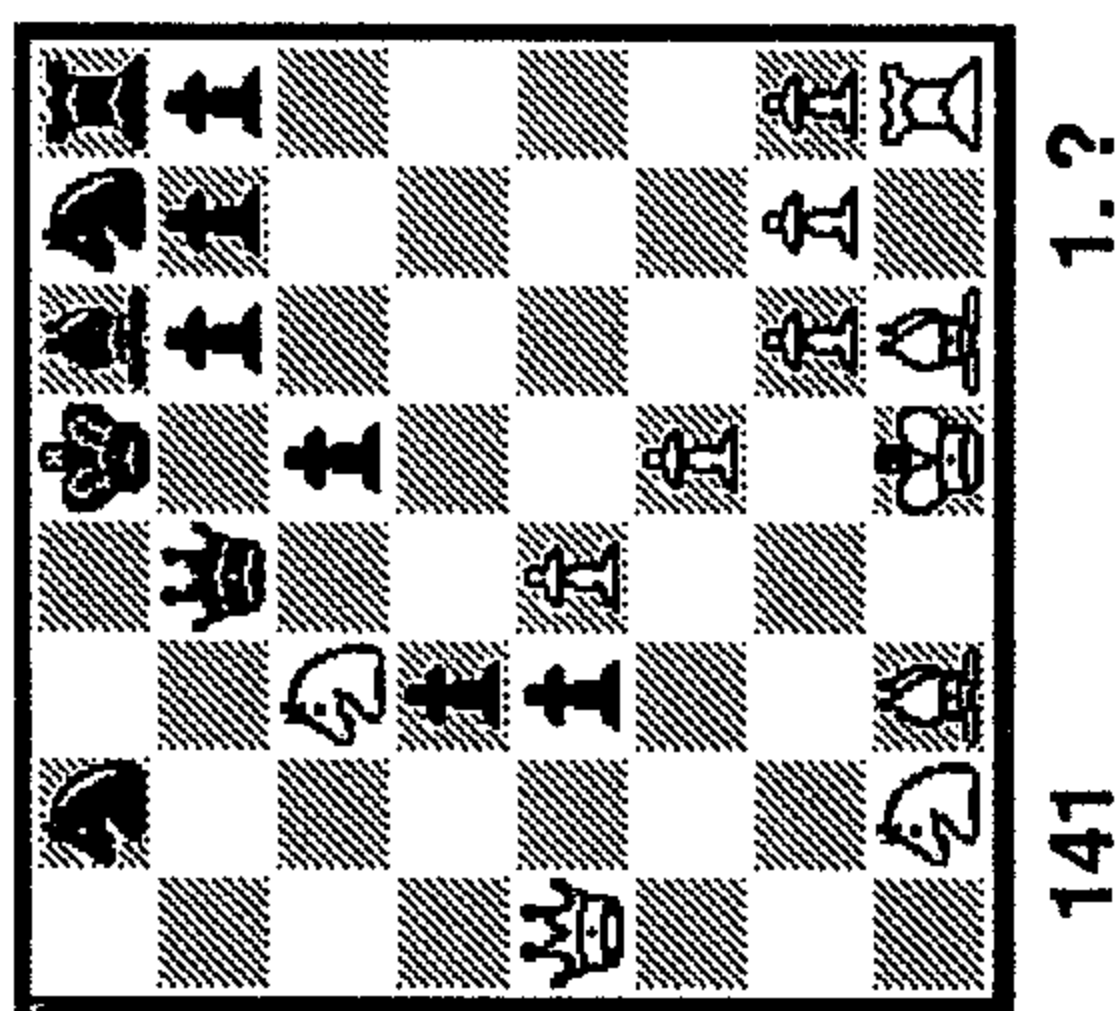
1\_   
 2\_   
 3\_

133 1.?



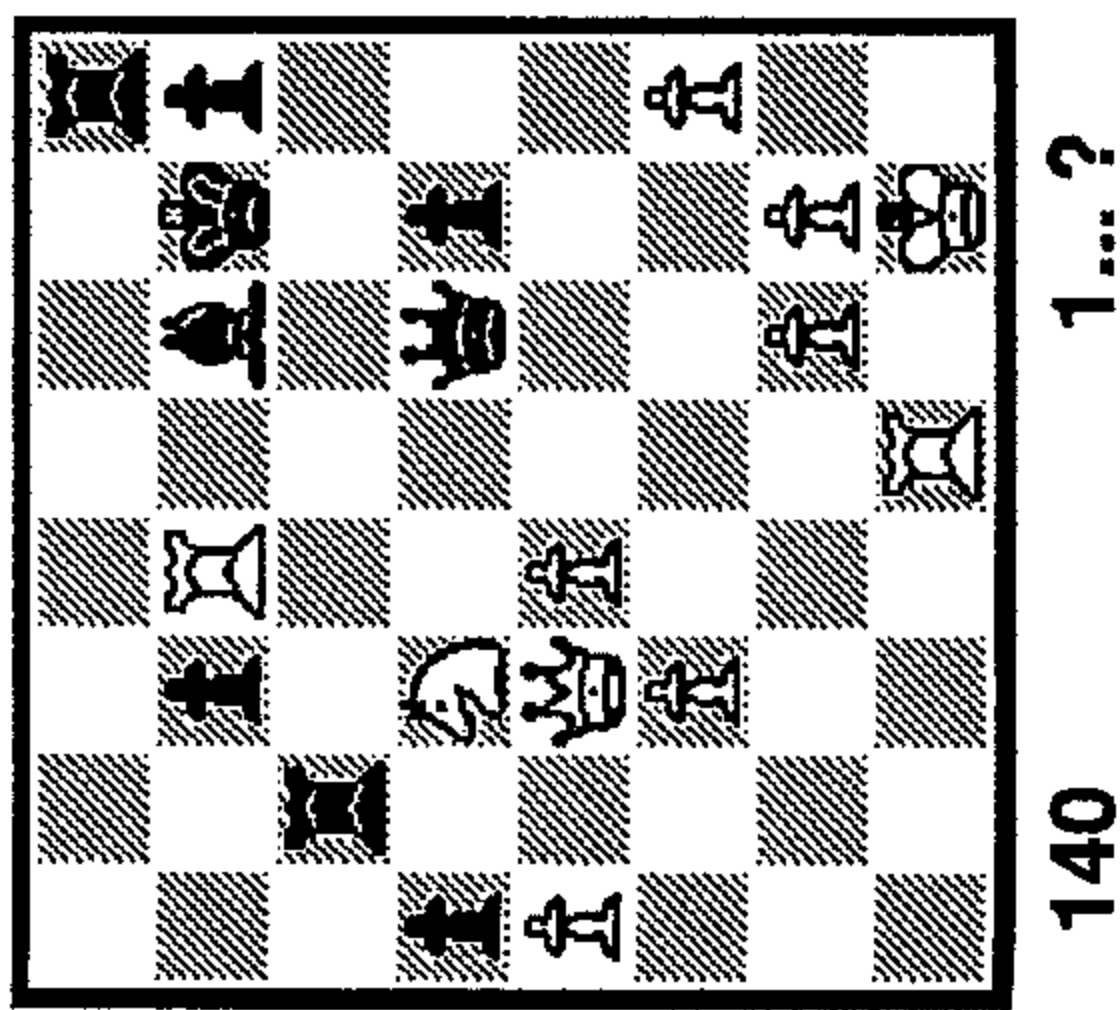
1\_   
 2\_   
 3\_

132 1...?



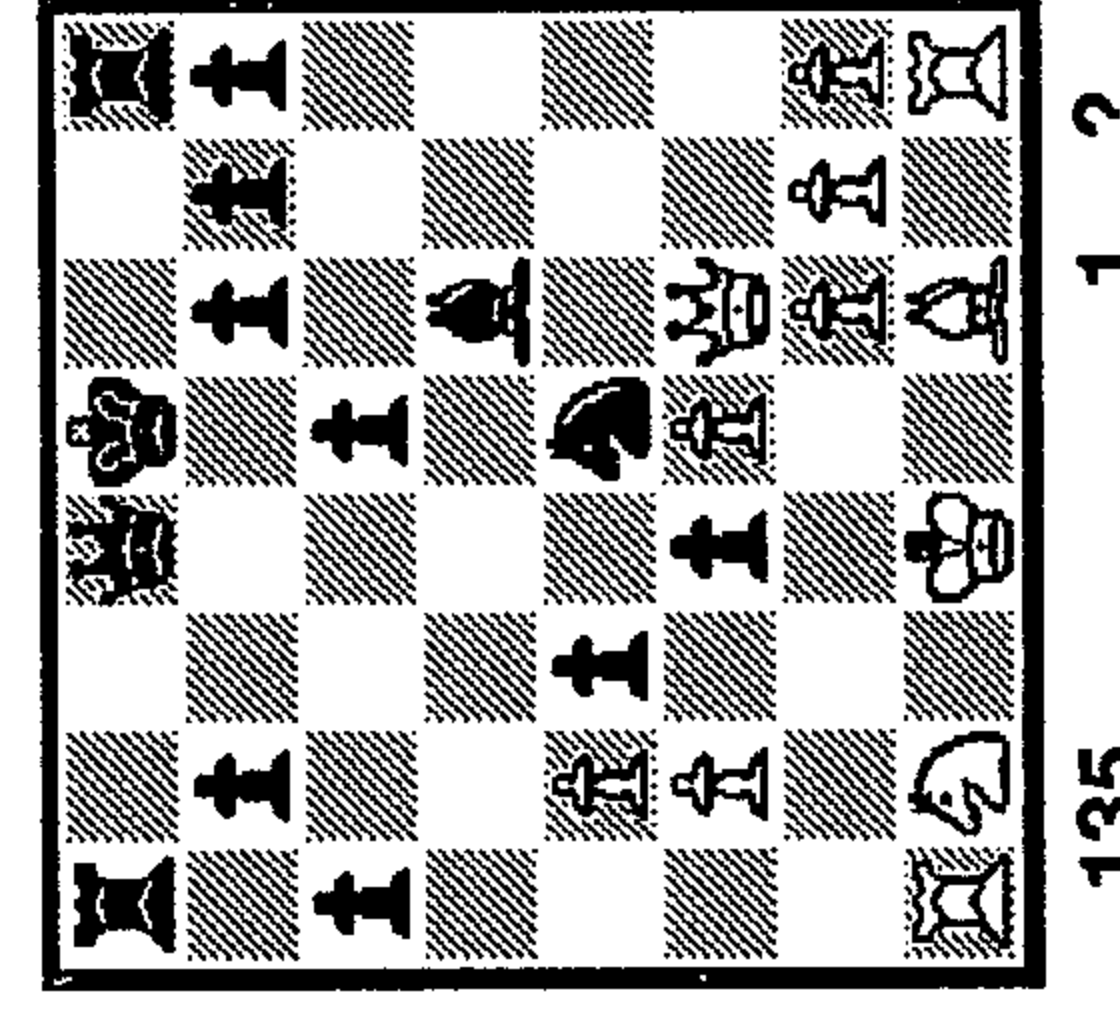
1\_   
 2\_   
 3\_

141 1.?



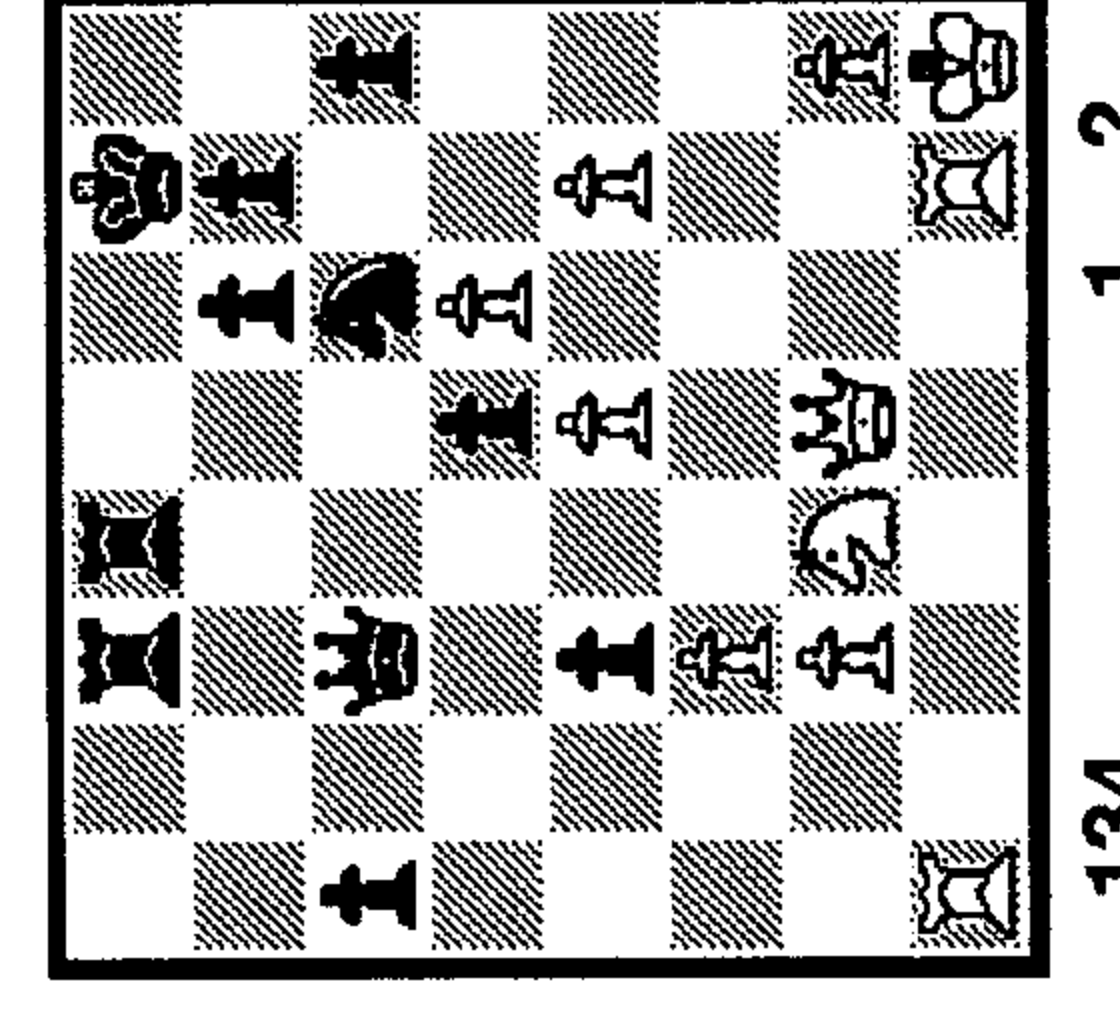
1\_   
 2\_   
 3\_

140 1...?



1\_   
 2\_   
 3\_

135 1...?



1\_   
 2\_   
 3\_

134 1...?