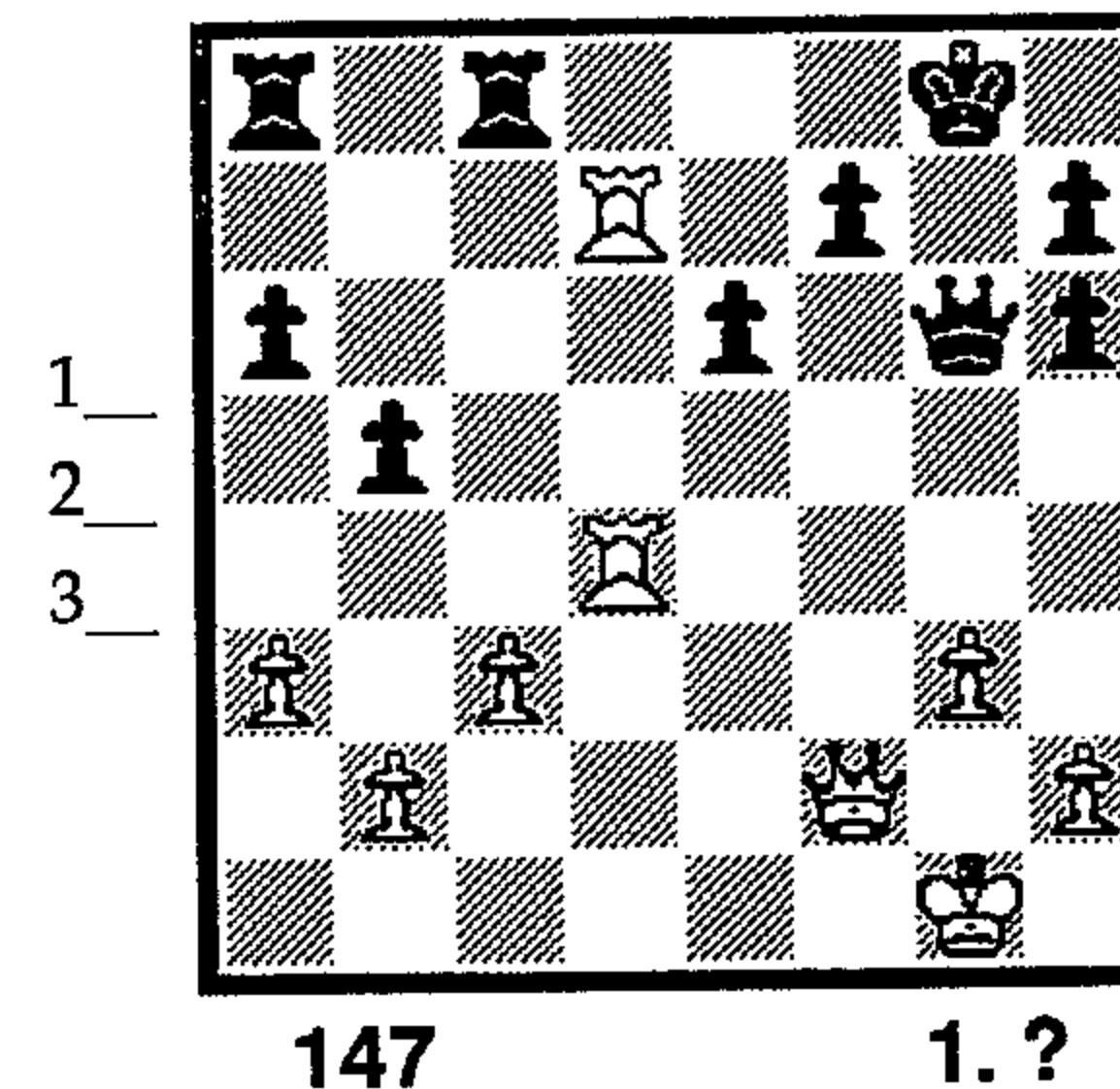
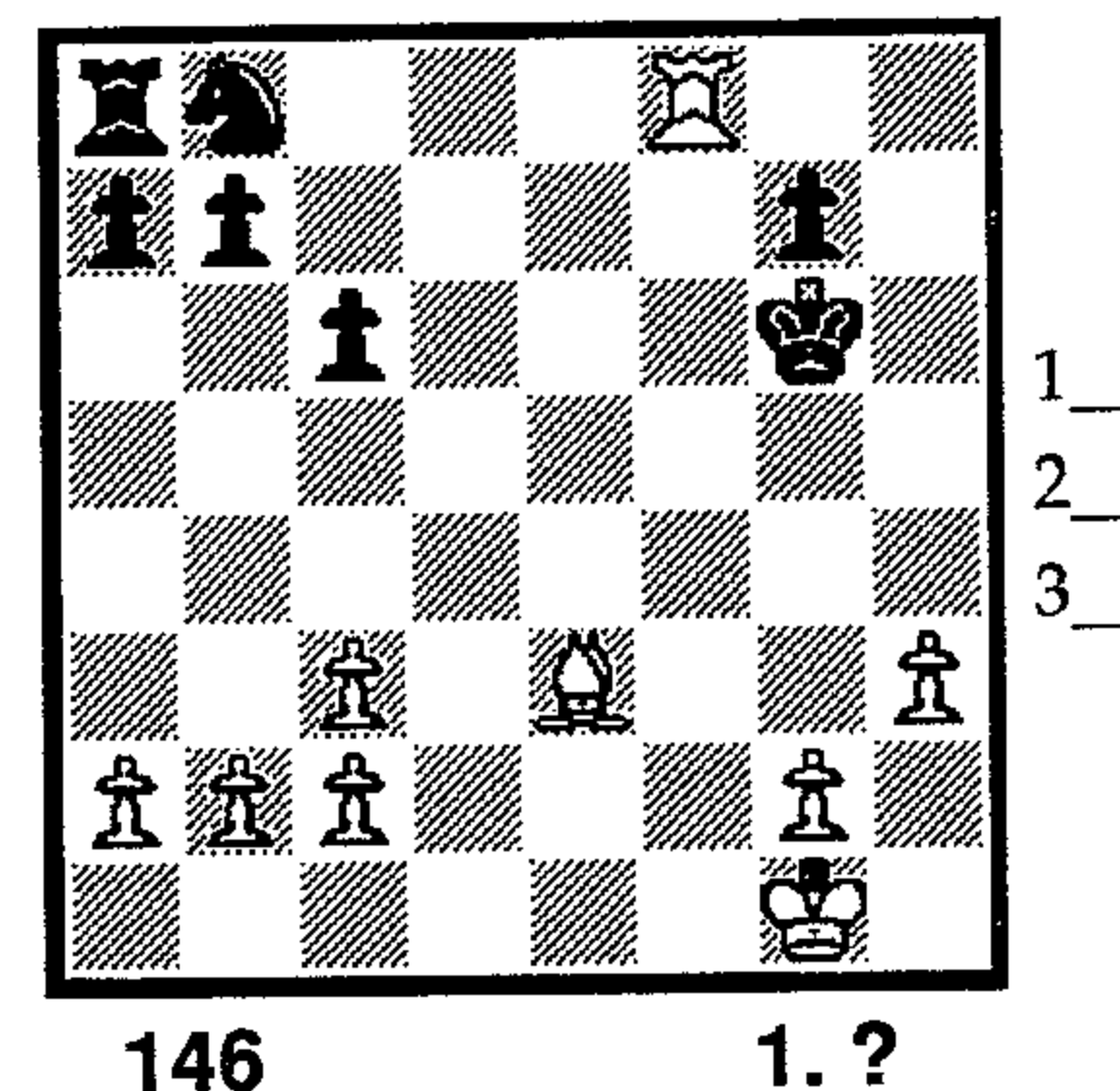
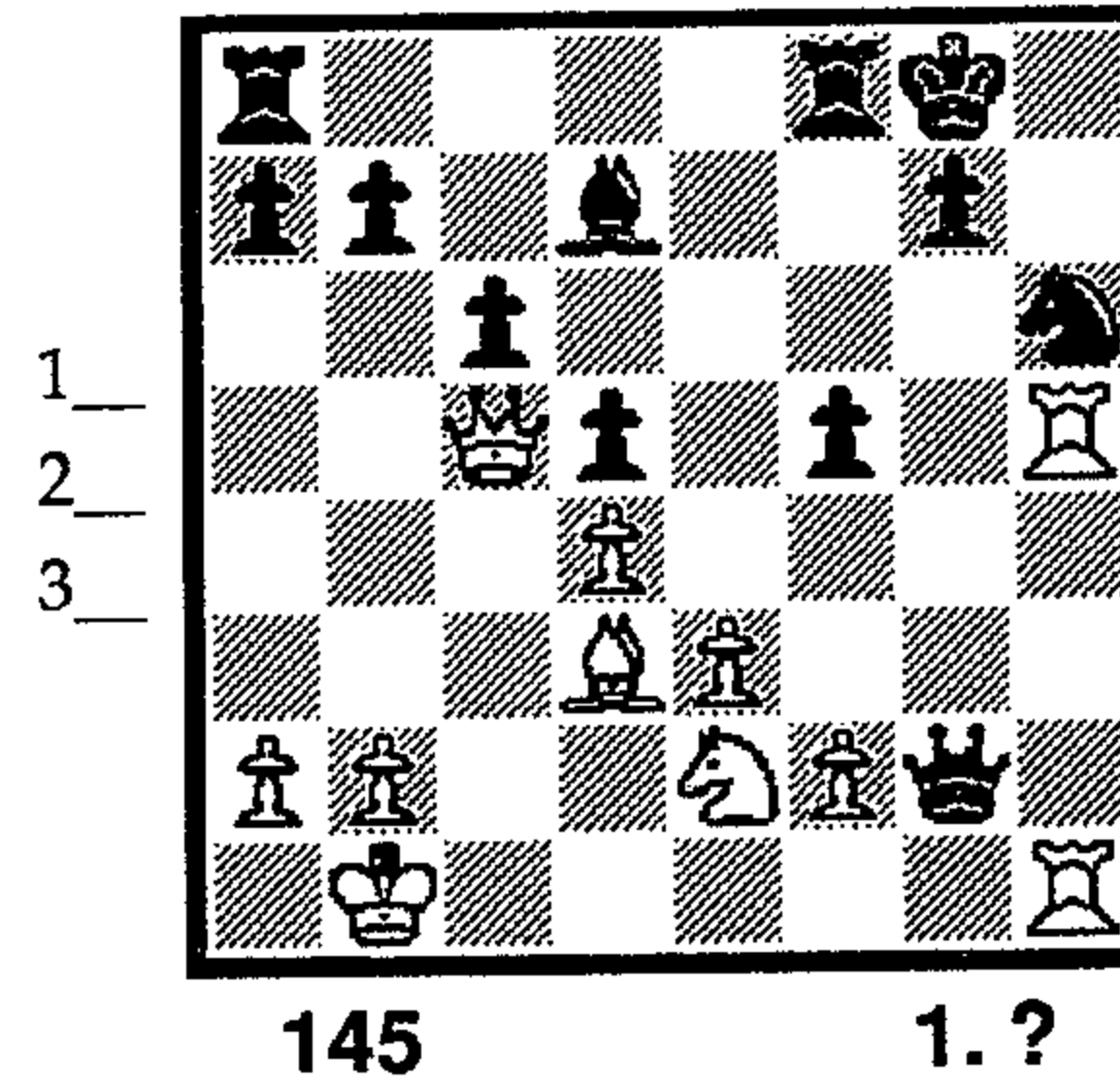
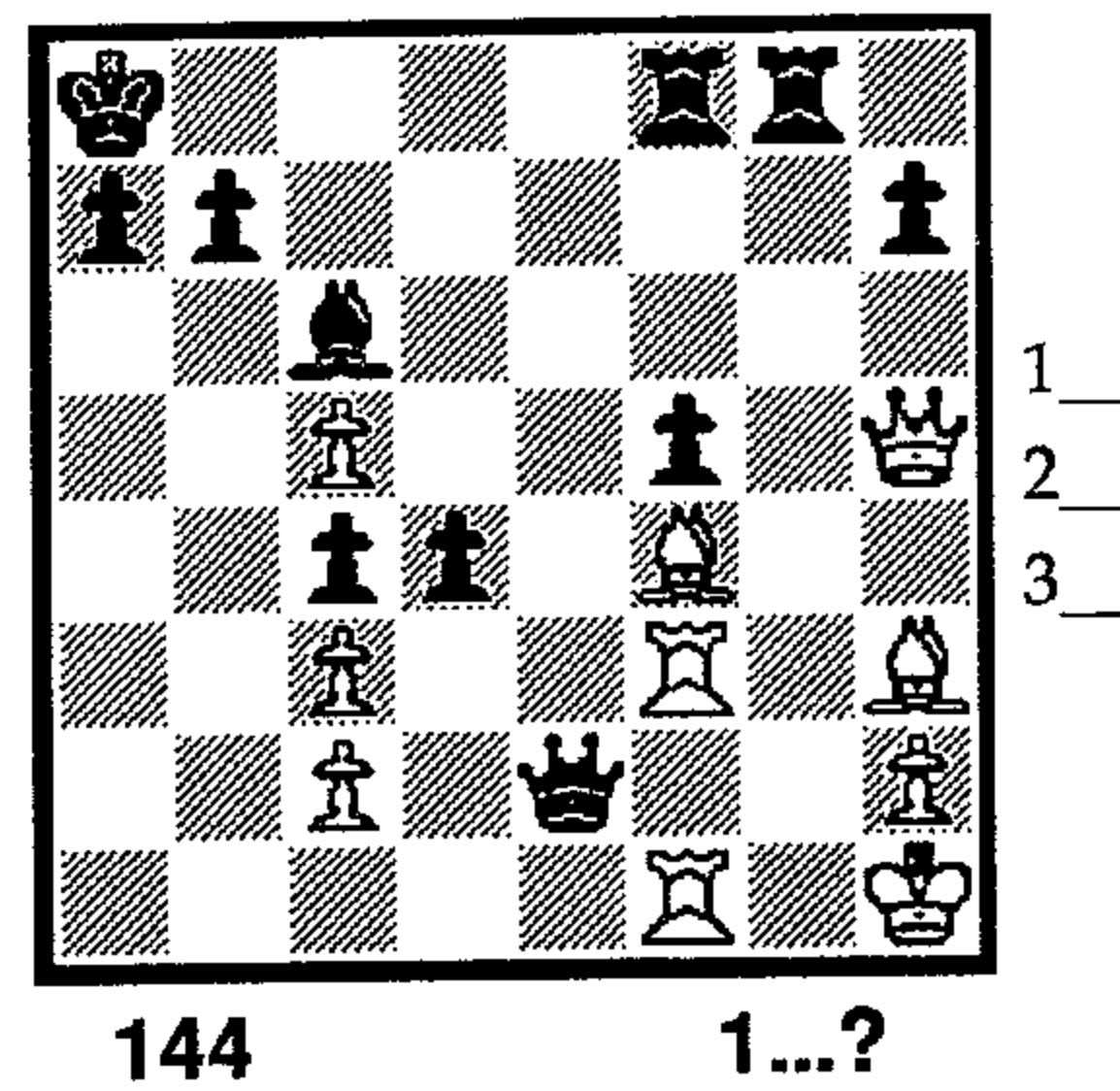
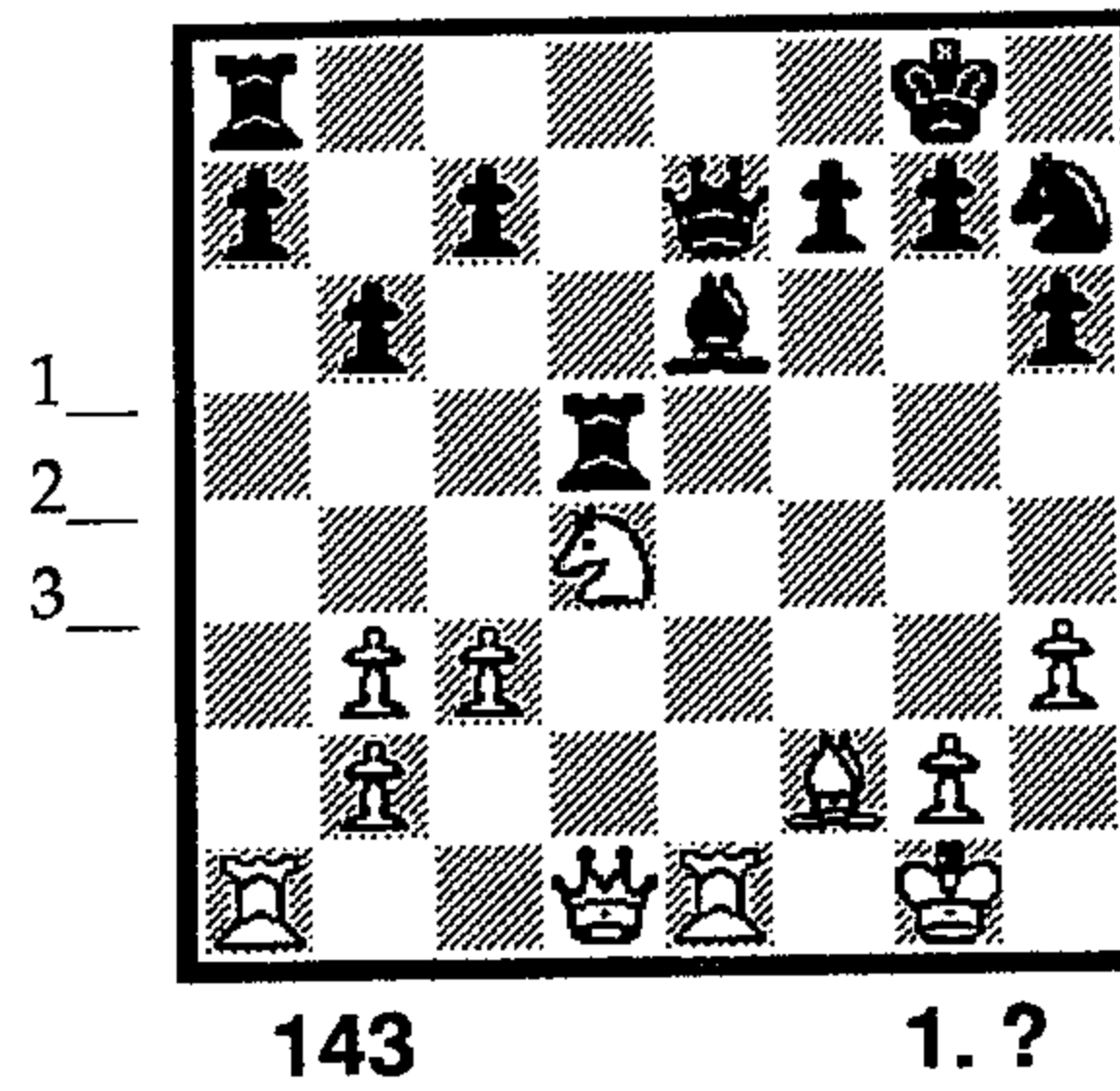
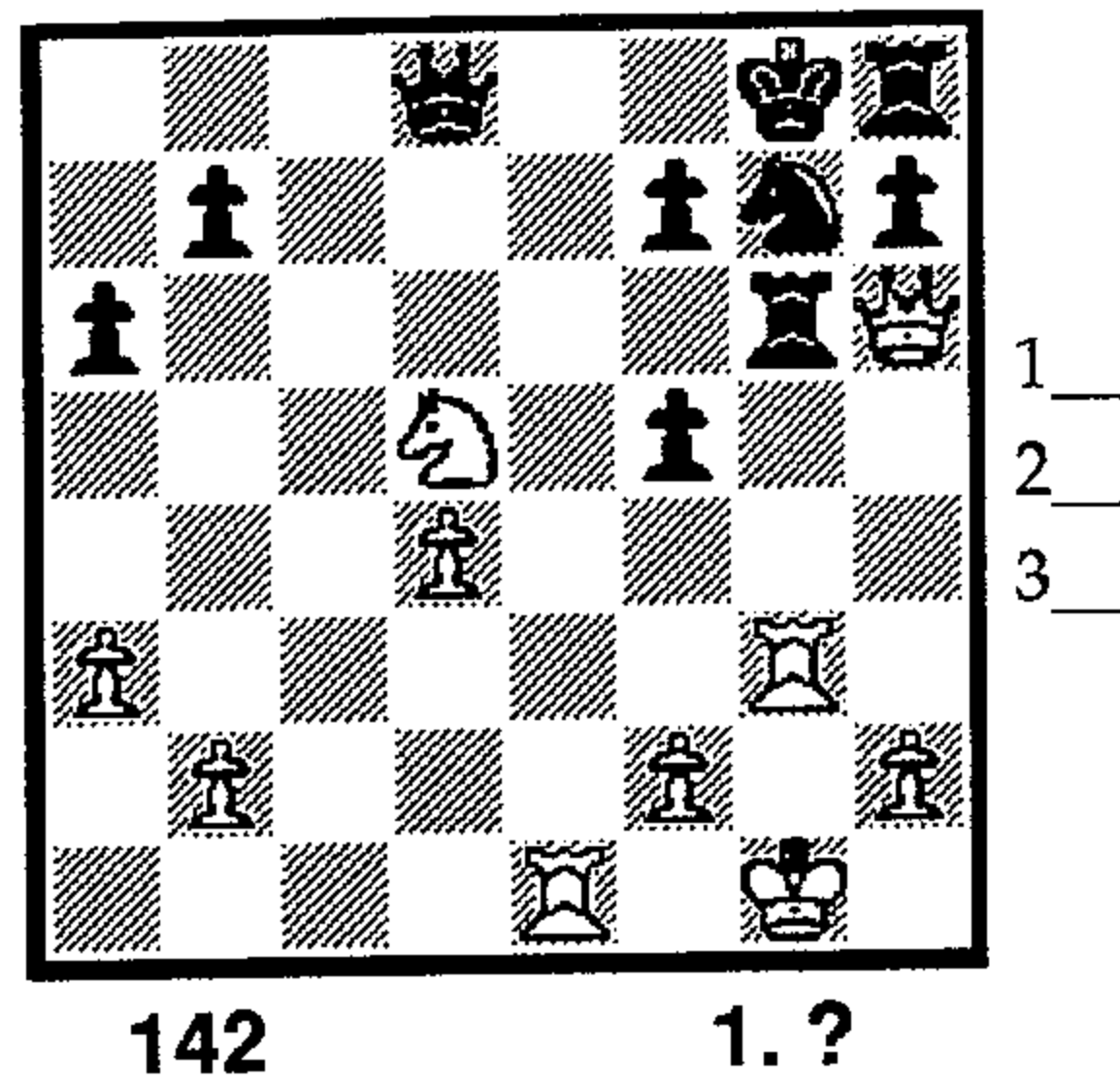
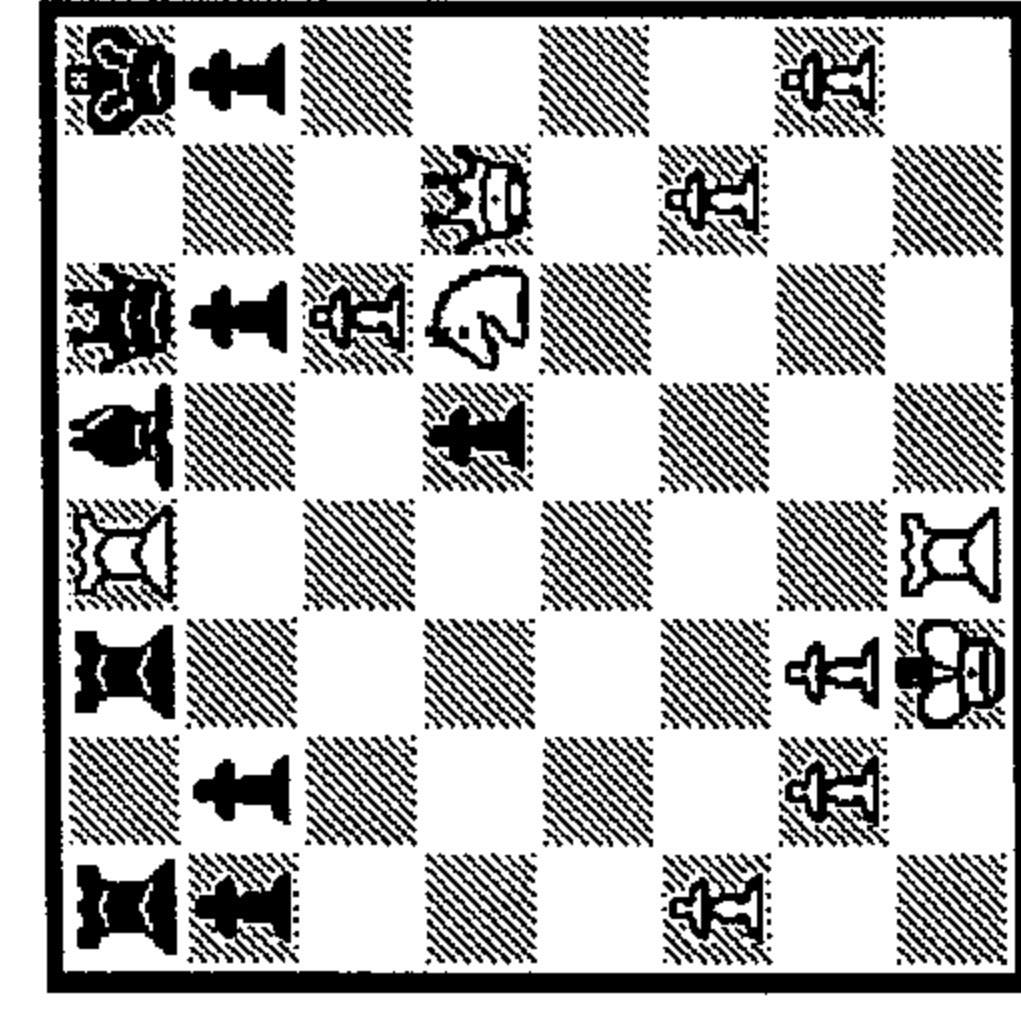


# KNIGHT FORK

The Knight is the most fascinating and mysterious of all the chess pieces. Its singular ability to hop over all obstacles, both friend and foe, set it apart. Potentially the Knight can attack up to eight pieces at once. In reality it is rare to encounter a Knight fork against more than two enemy units. The Knight fork is quite often prepared by a preliminary sacrifice or diversionary move. In any event, the Knight is very often the source of intriguing tactical play as it leaps unexpectedly into the thick of things.

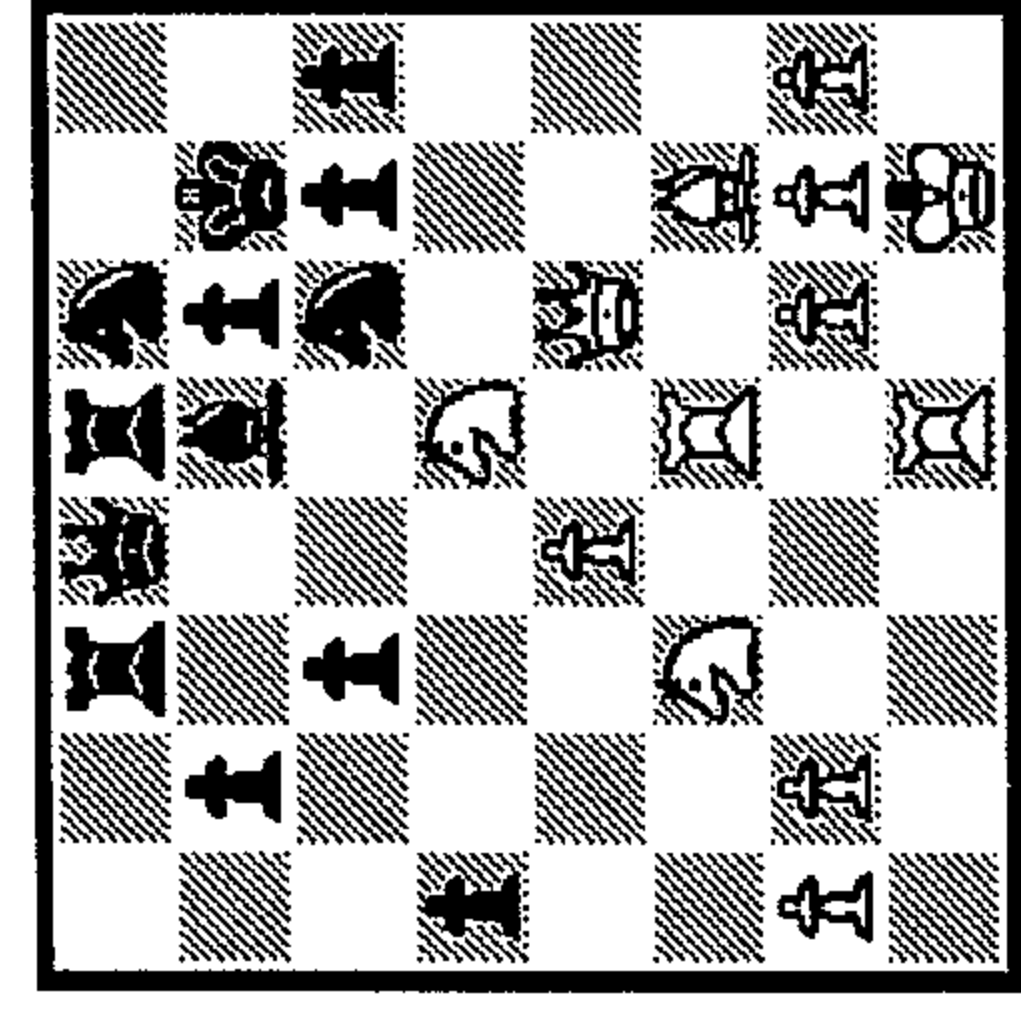




148

1.?

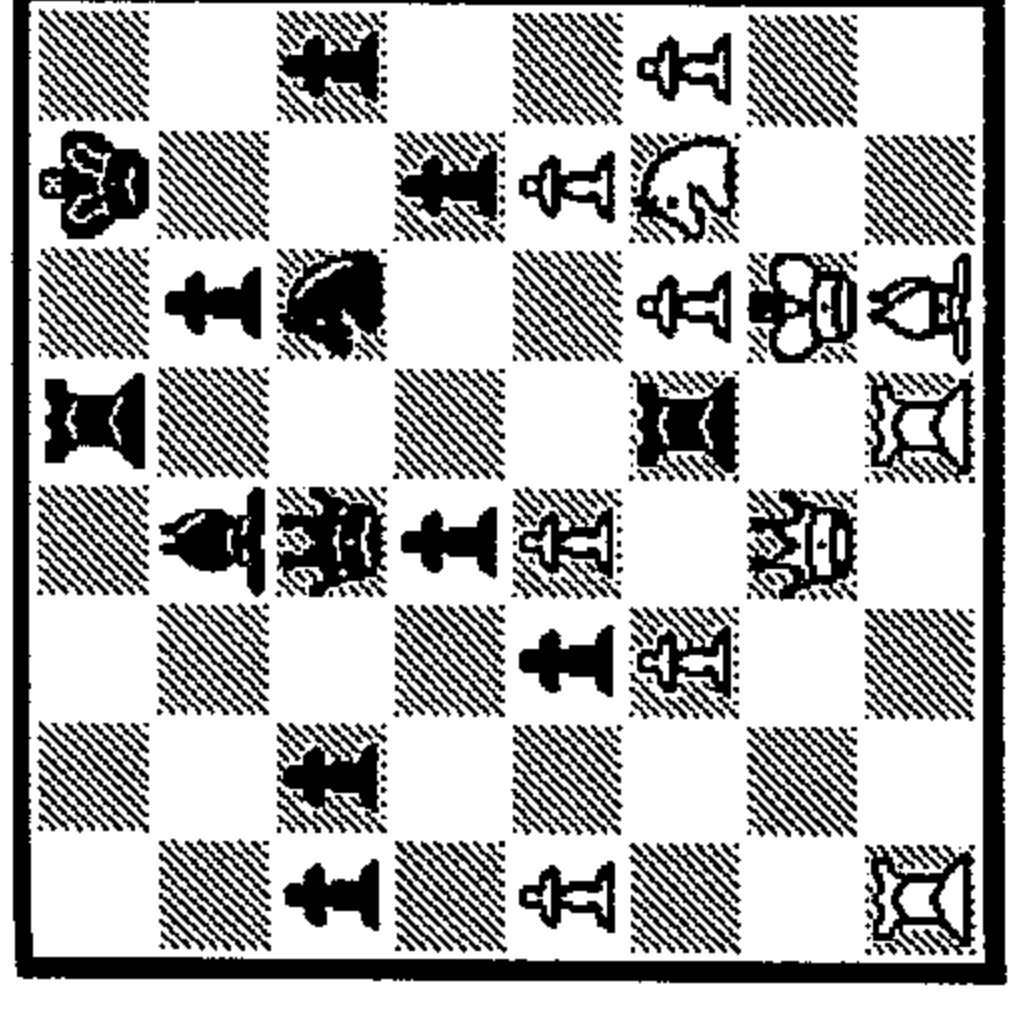
- 1. \_ \_
- 2. \_ \_
- 3. \_ \_



149

1.?

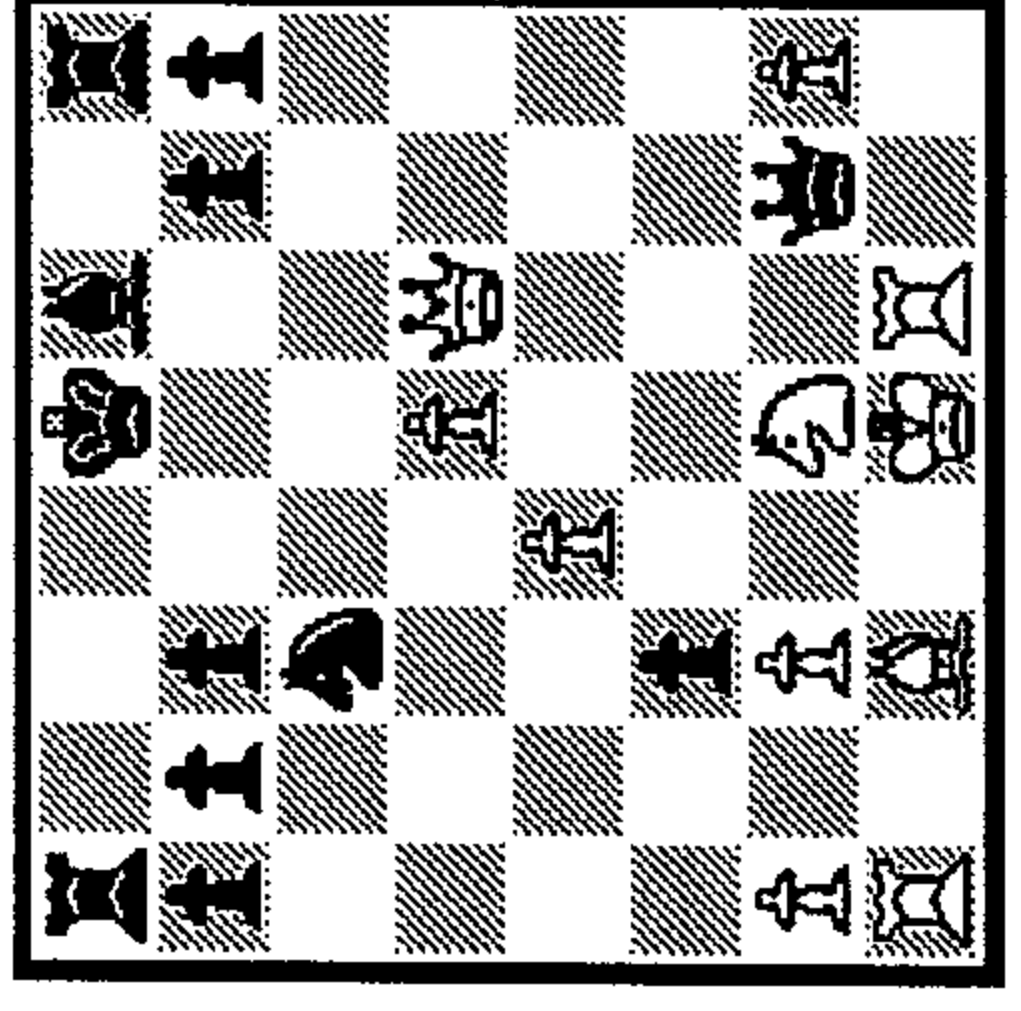
- 1. \_ \_
- 2. \_ \_
- 3. \_ \_



154

1...?

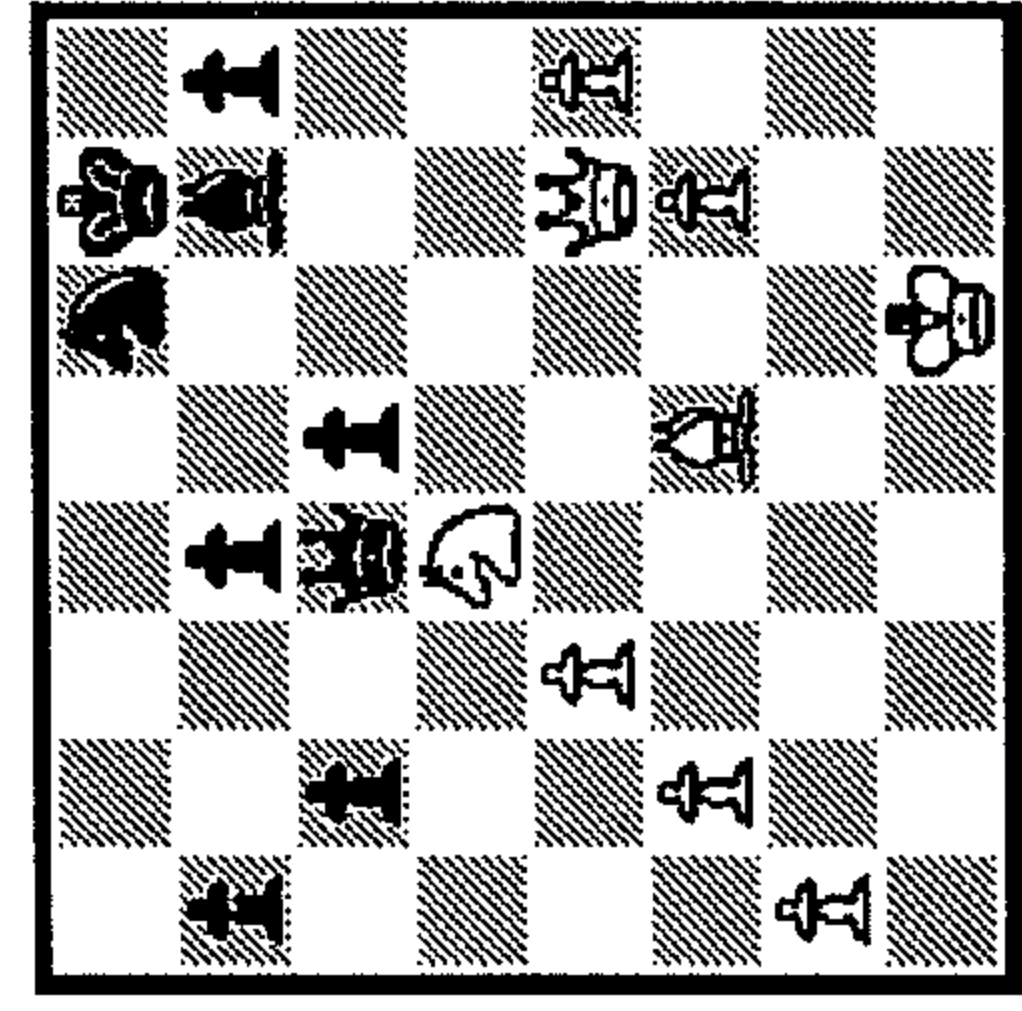
- 1. \_ \_
- 2. \_ \_
- 3. \_ \_



155

1...?

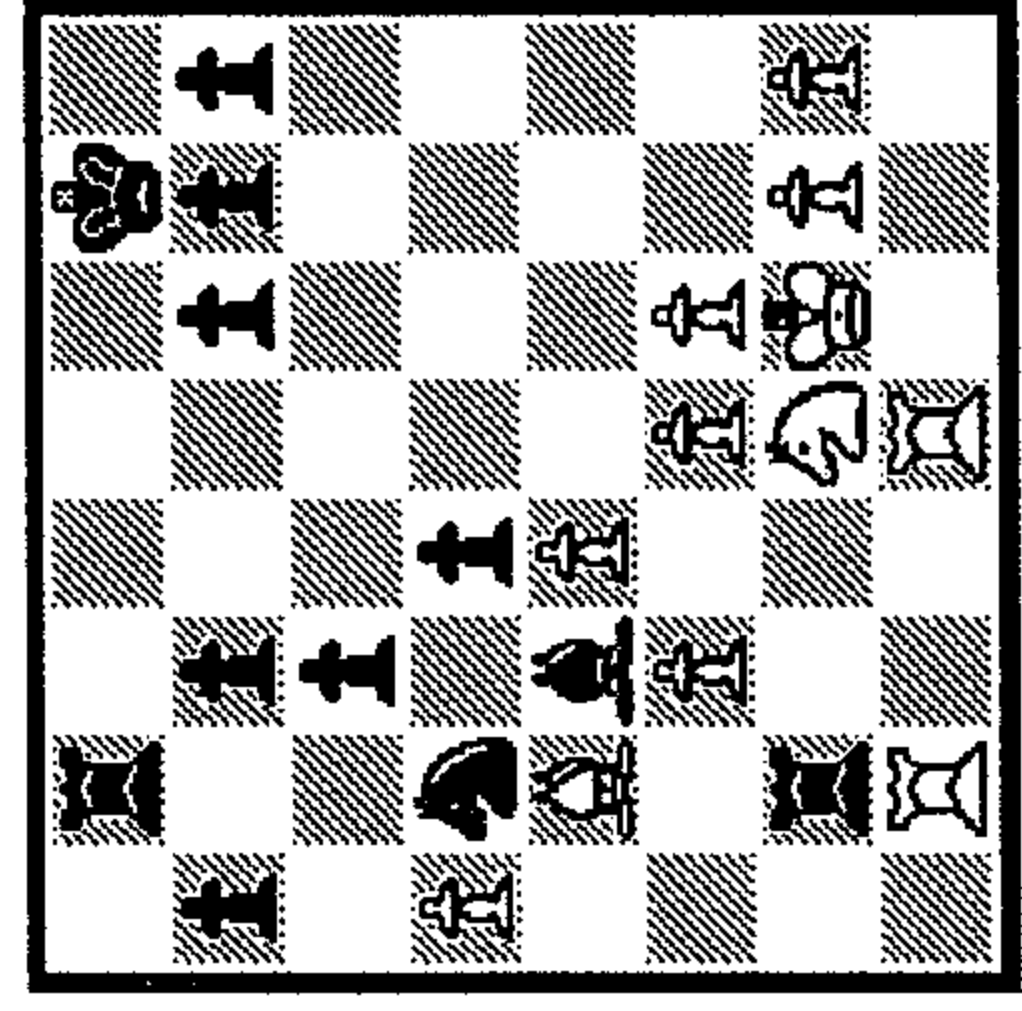
- 1. \_ \_
- 2. \_ \_
- 3. \_ \_



150

1.?

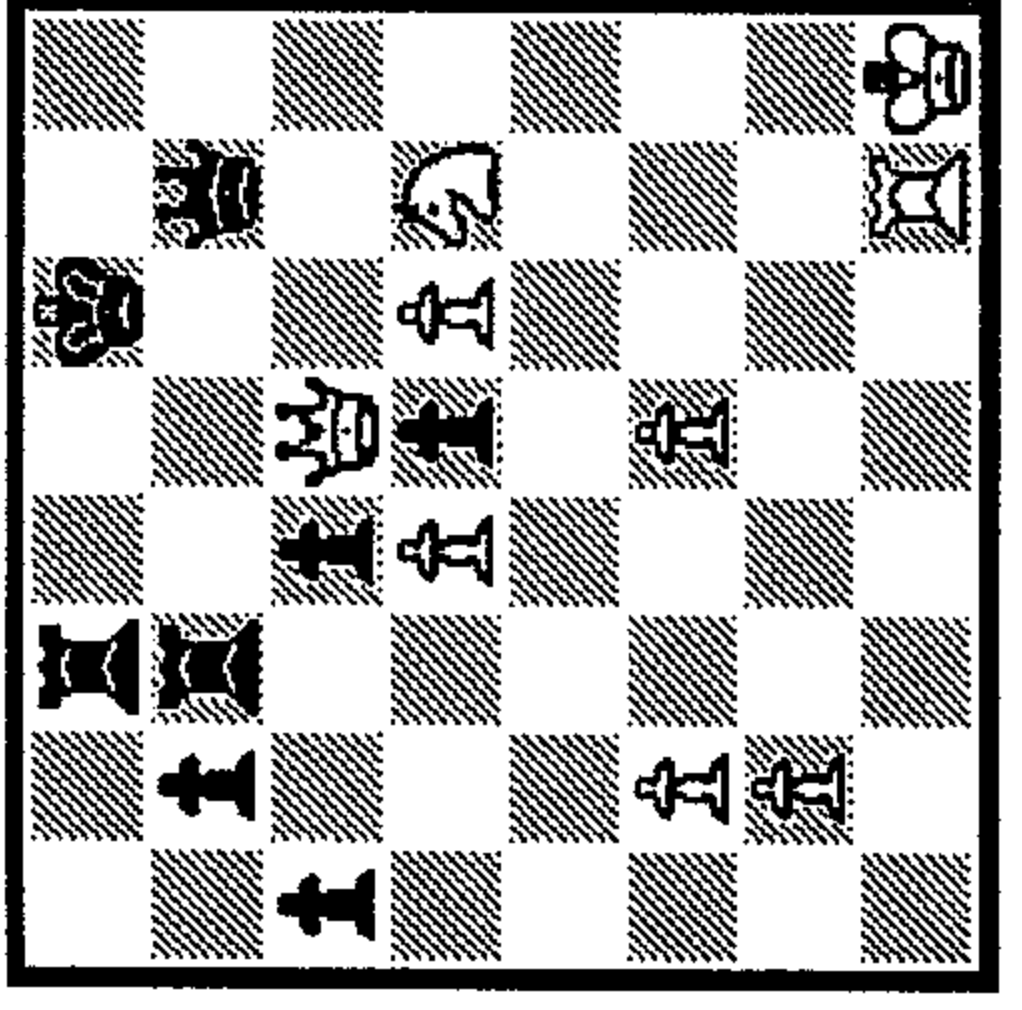
- 1. \_ \_
- 2. \_ \_
- 3. \_ \_



151

1...?

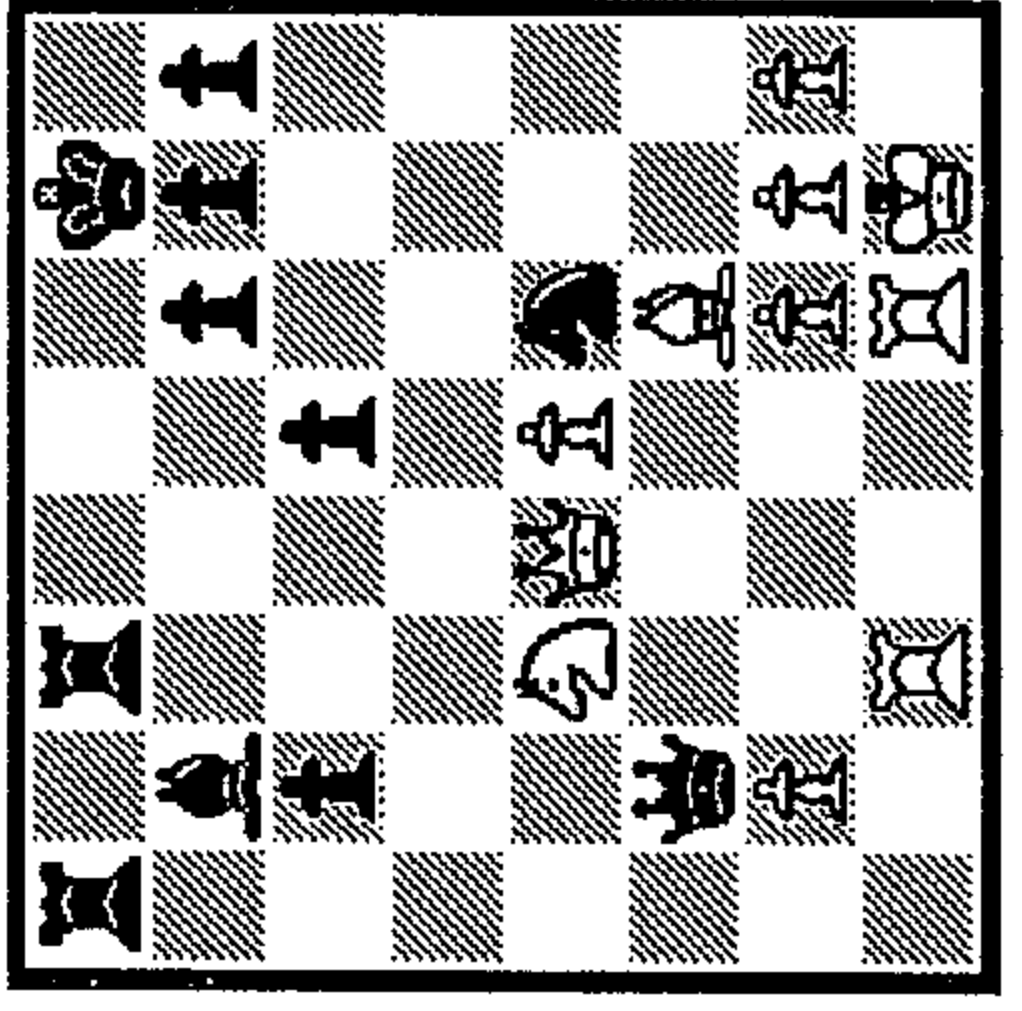
- 1. \_ \_
- 2. \_ \_
- 3. \_ \_



156

1.?

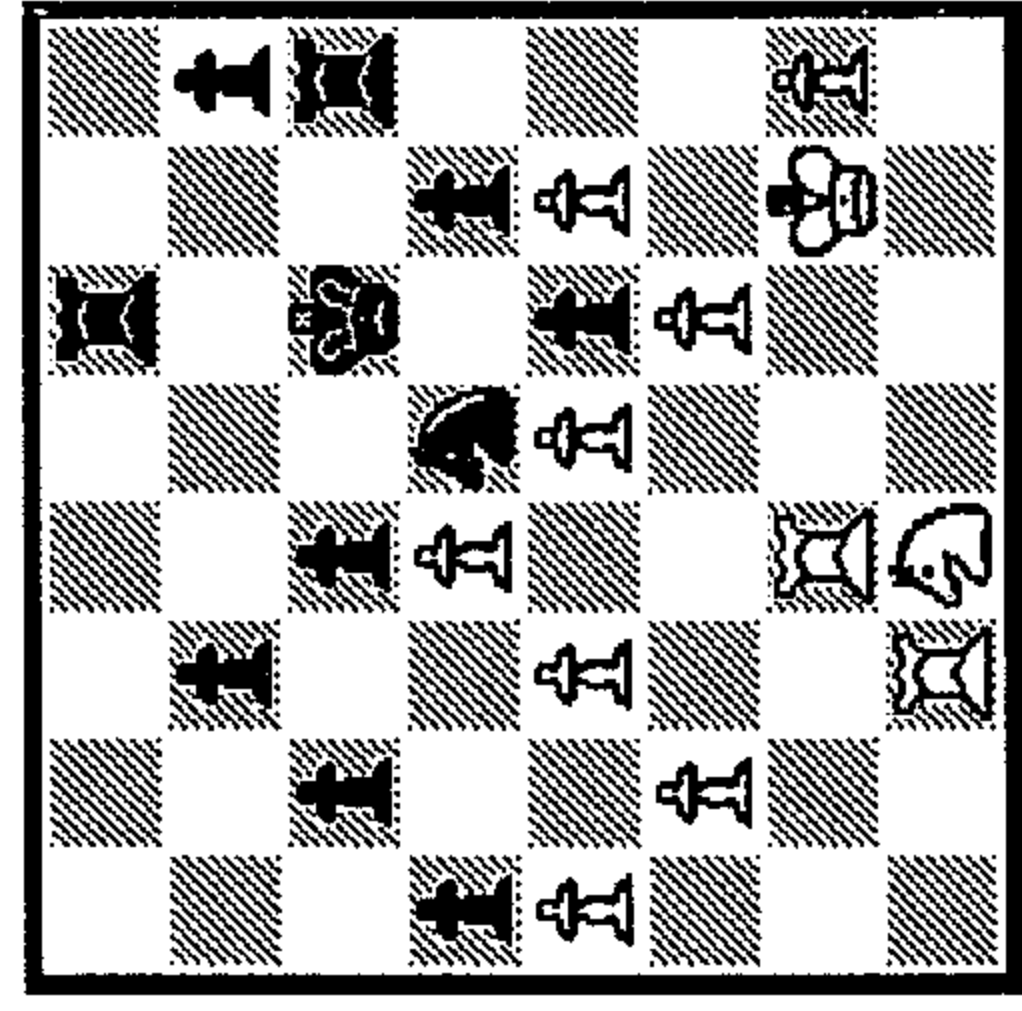
- 1. \_ \_
- 2. \_ \_
- 3. \_ \_



157

1...?

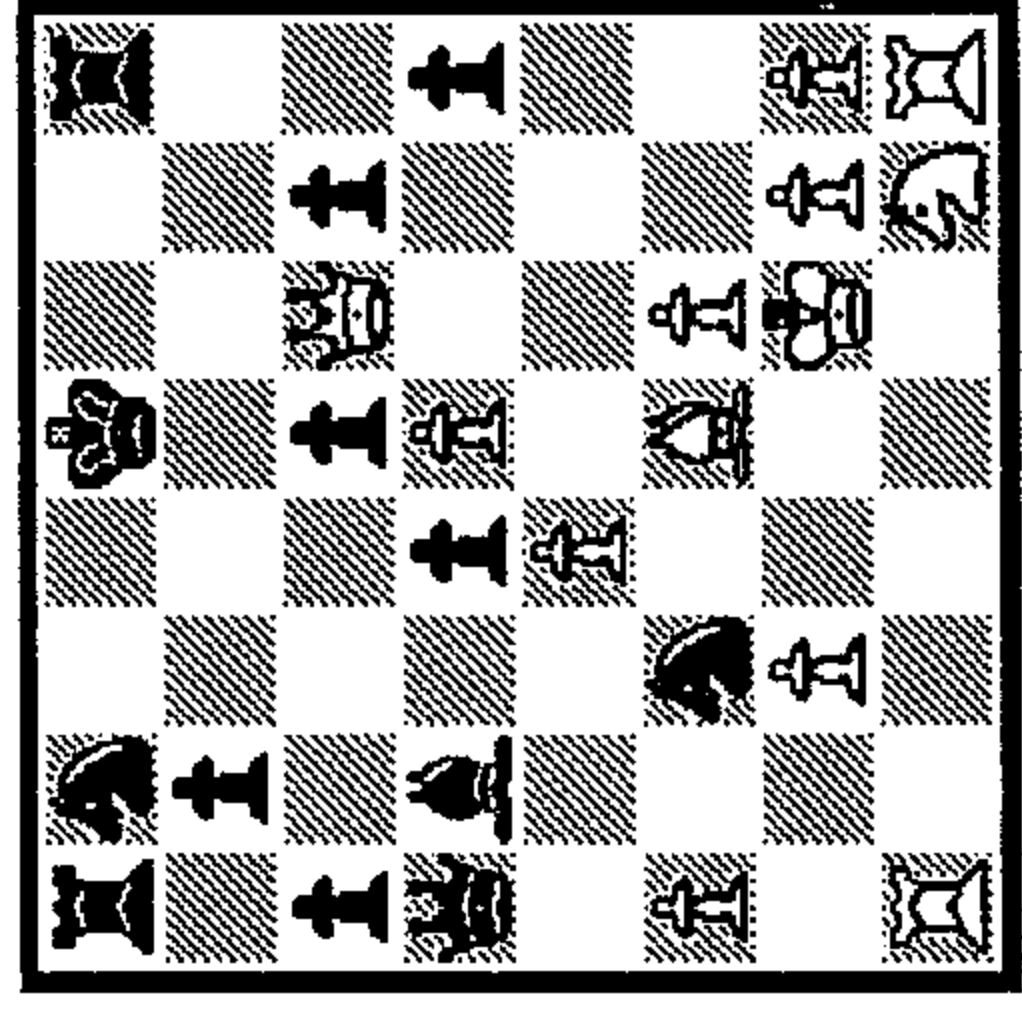
- 1. \_ \_
- 2. \_ \_
- 3. \_ \_



152

1...?

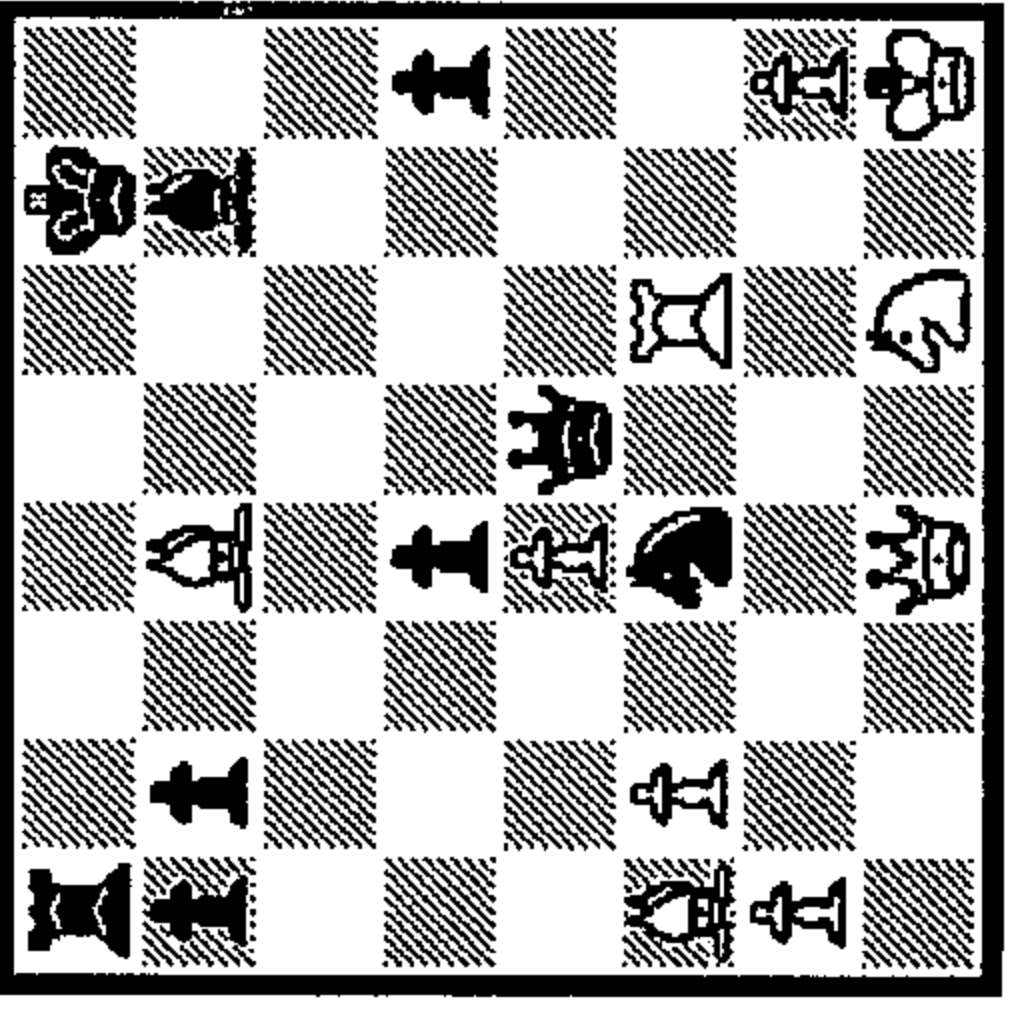
- 1. \_ \_
- 2. \_ \_
- 3. \_ \_



153

1...?

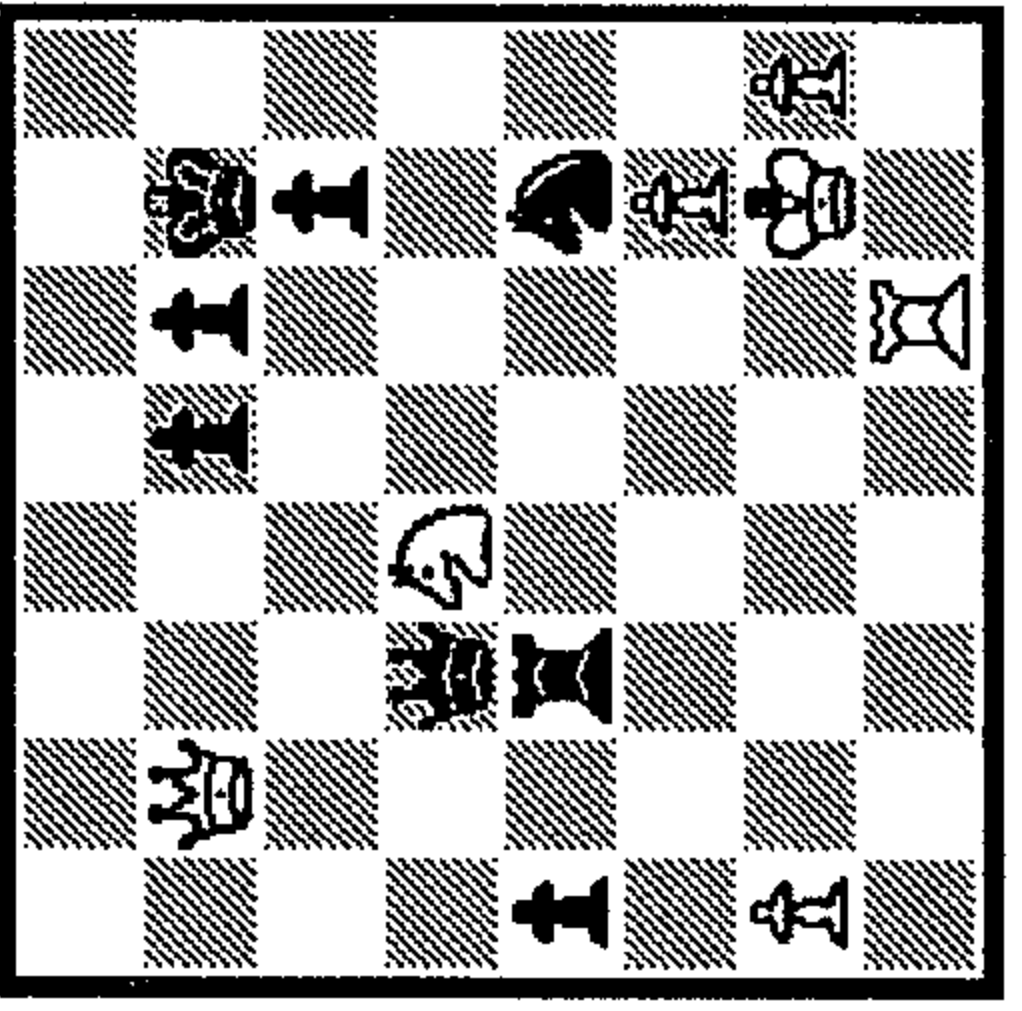
- 1. \_ \_
- 2. \_ \_
- 3. \_ \_



158

1...?

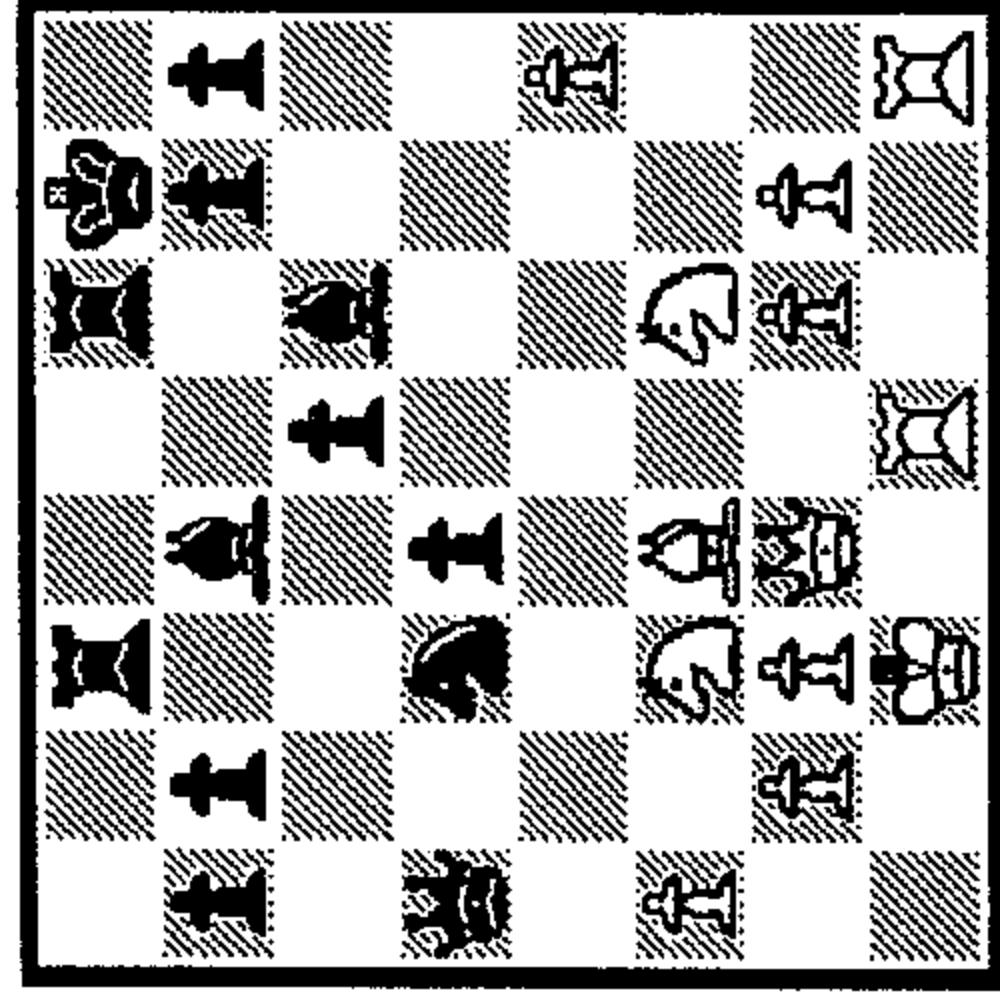
- 1. \_ \_
- 2. \_ \_
- 3. \_ \_



159

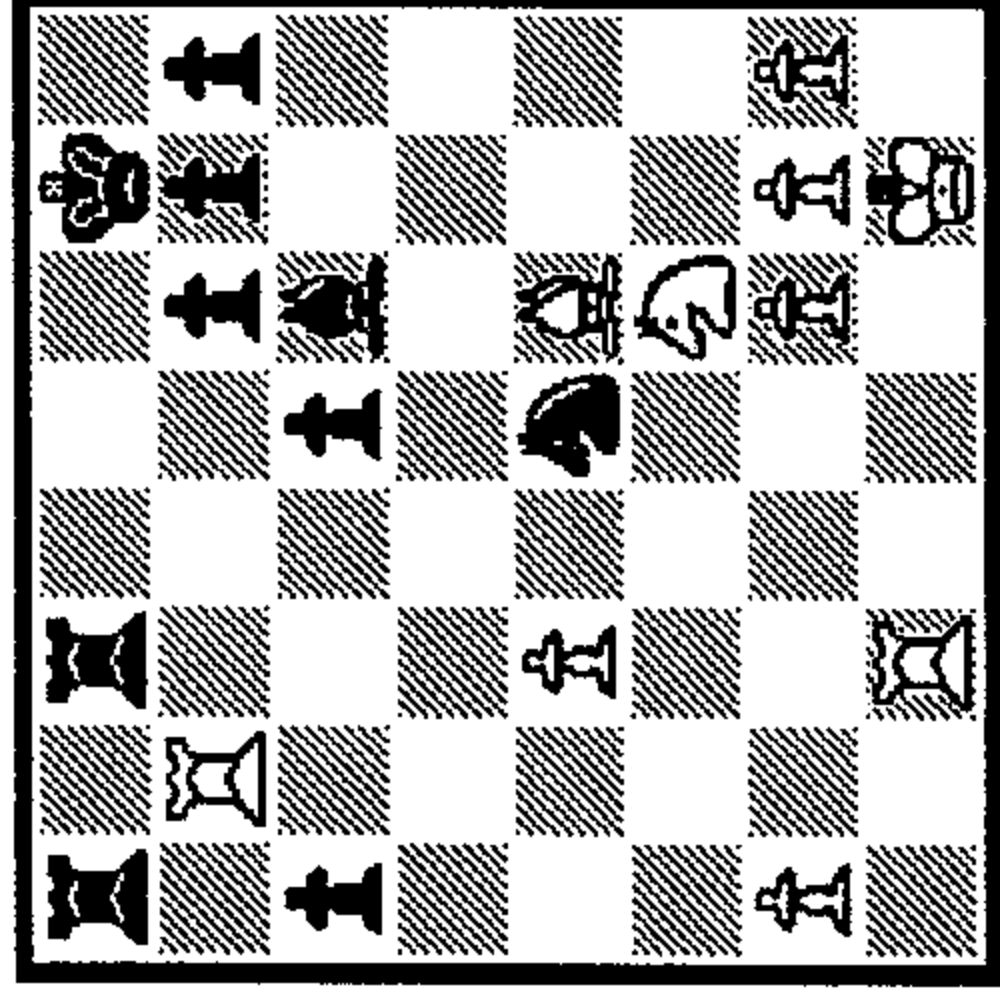
1...?

- 1. \_ \_
- 2. \_ \_
- 3. \_ \_



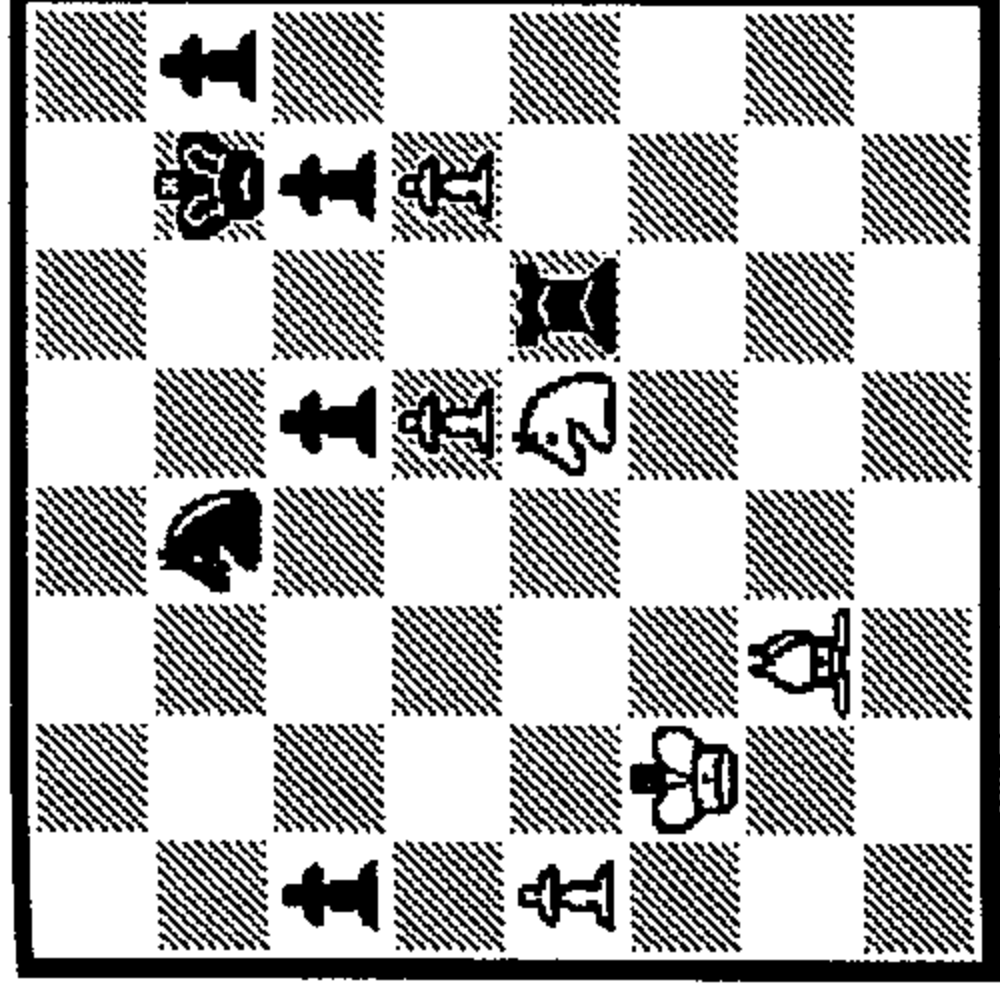
160 1...?

- 1\_
- 2\_
- 3\_



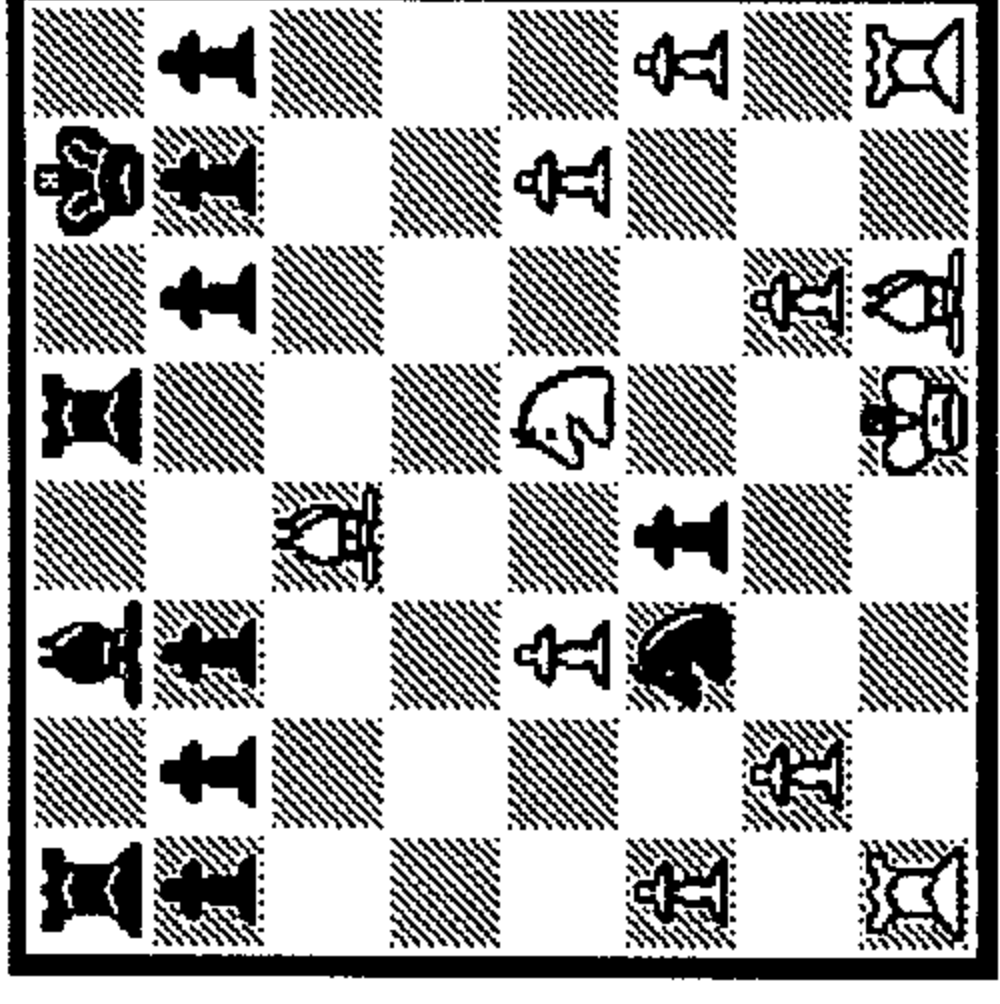
161 1...?

- 1\_
- 2\_
- 3\_



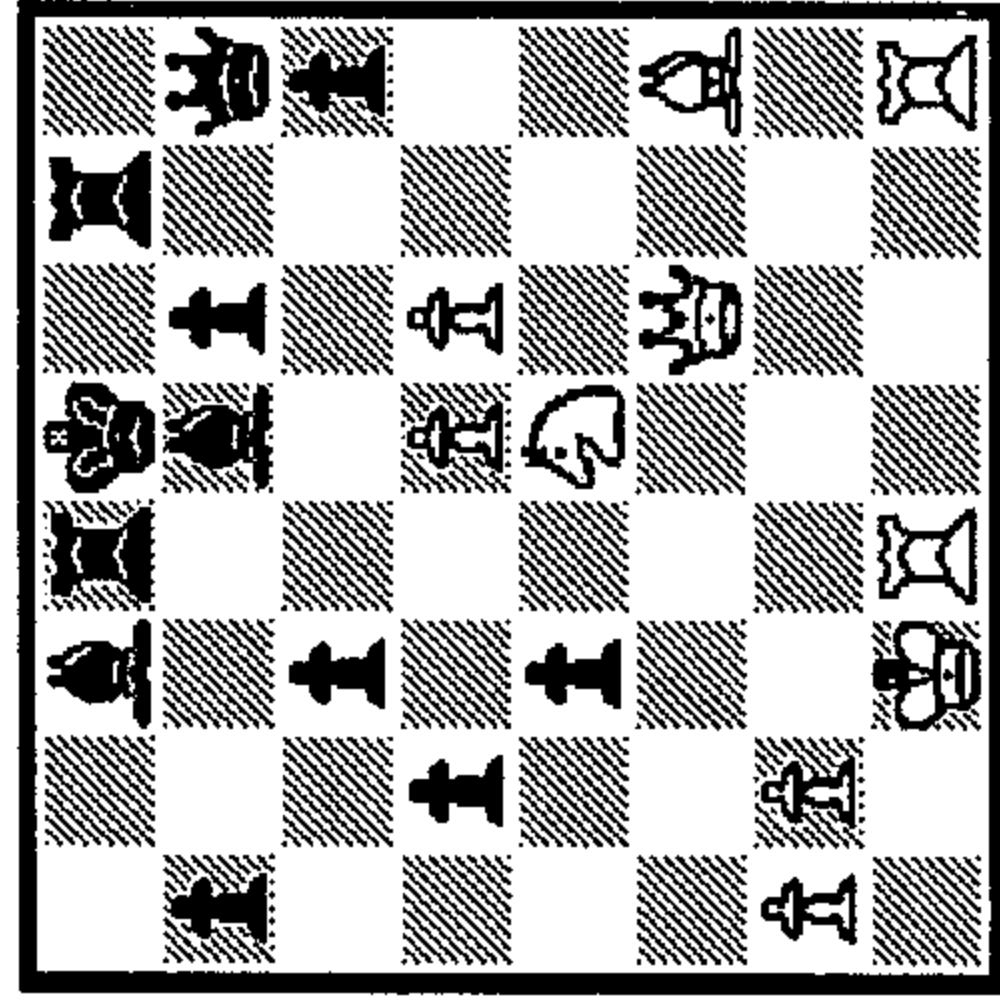
166 1...?

- 1\_
- 2\_
- 3\_



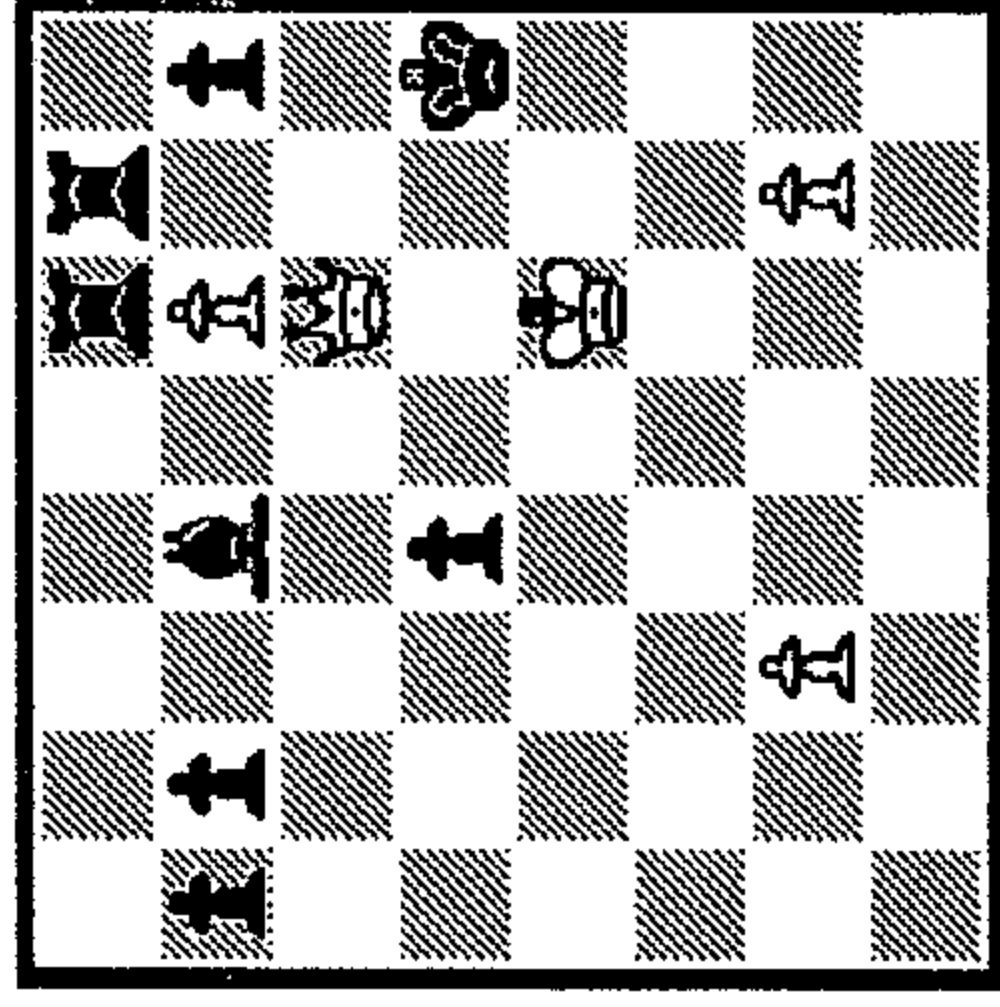
167 1...?

- 1\_
- 2\_
- 3\_



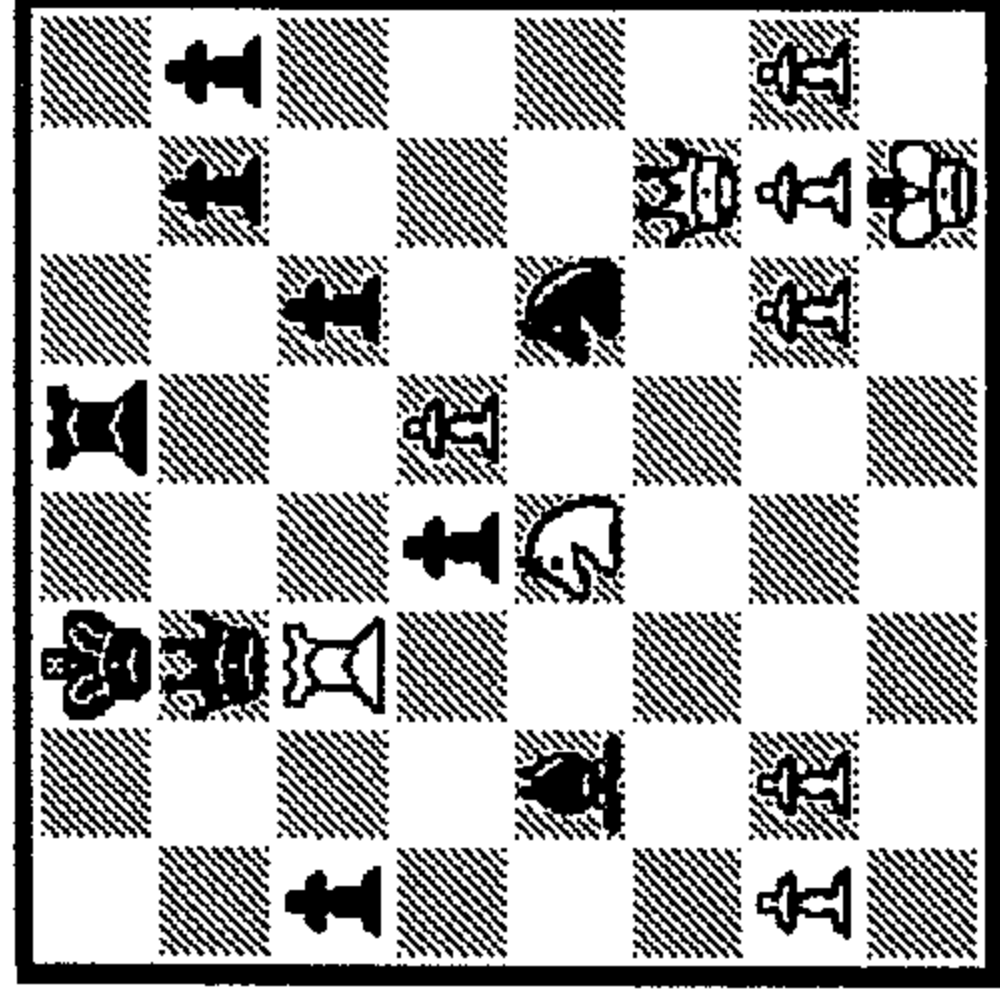
162 1.?

- 1\_
- 2\_
- 3\_



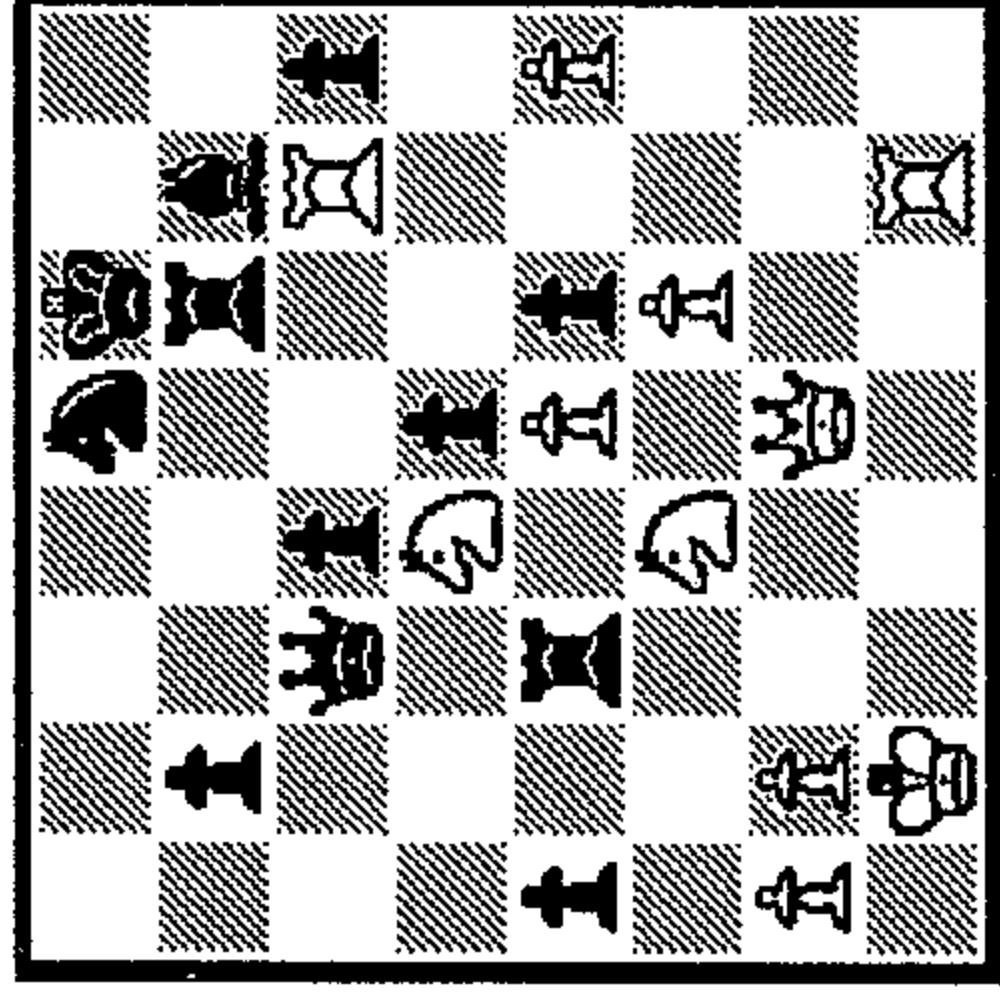
163 1.?

- 1\_
- 2\_
- 3\_



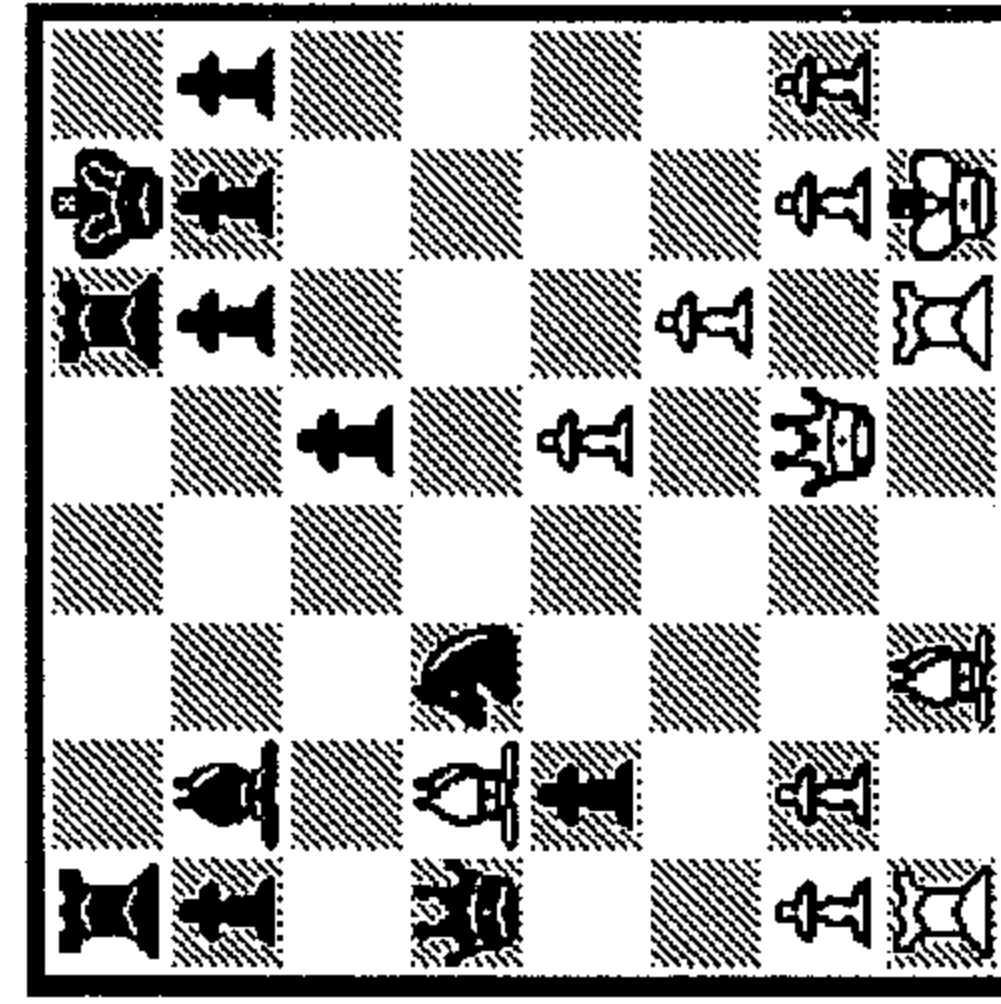
168 1...?

- 1\_
- 2\_
- 3\_



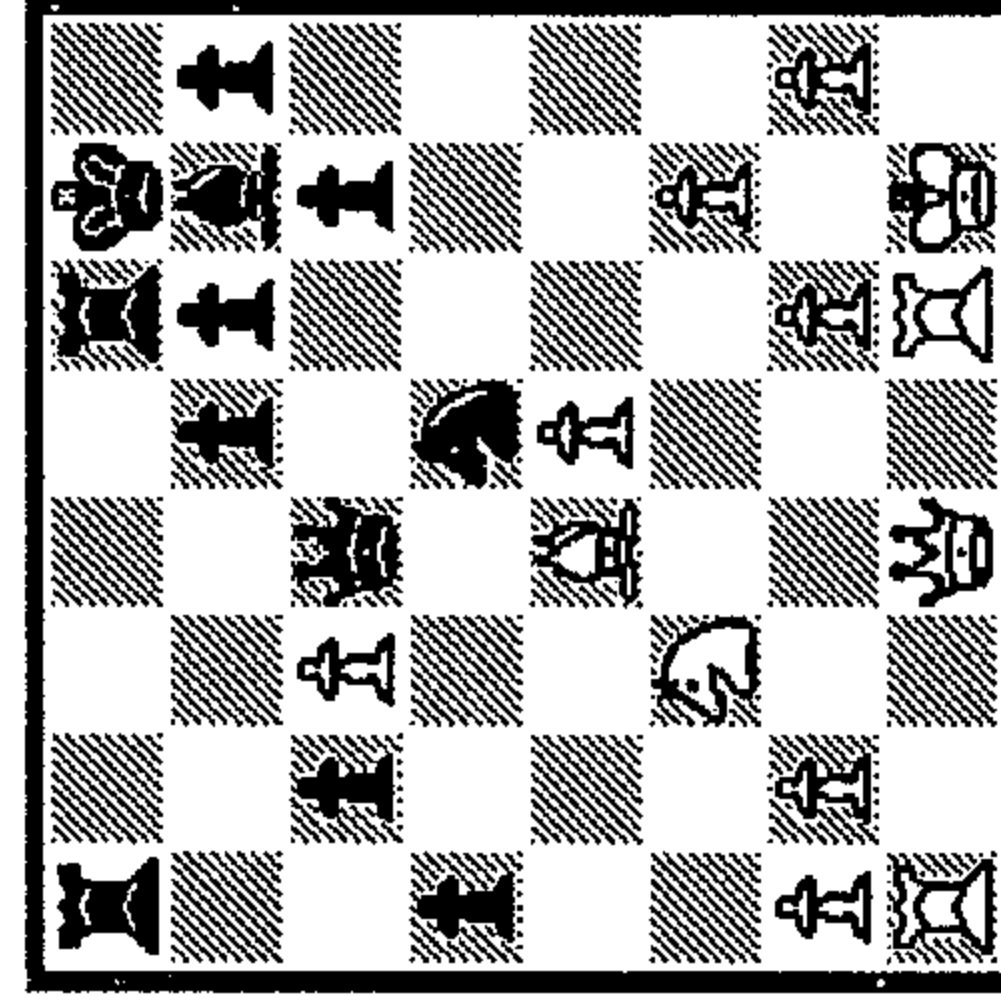
169 1.?

- 1\_
- 2\_
- 3\_



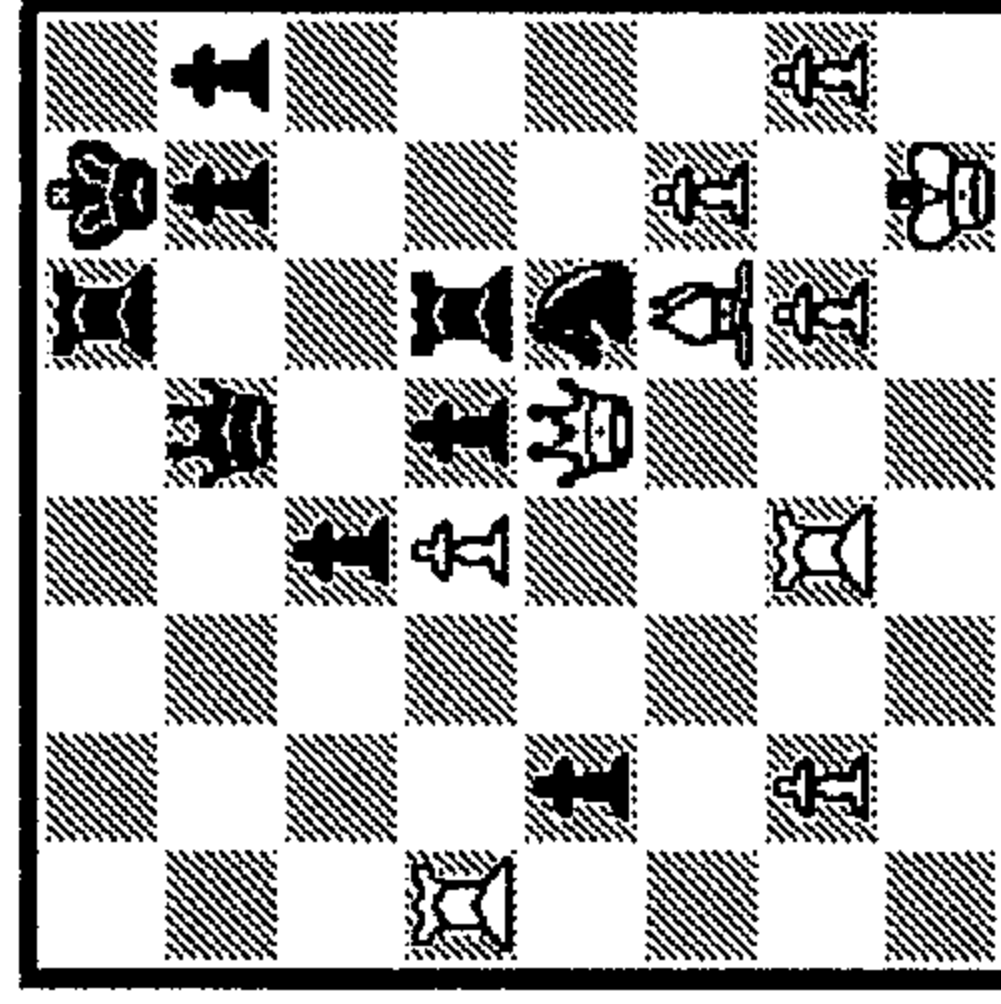
164 1...?

- 1\_
- 2\_
- 3\_



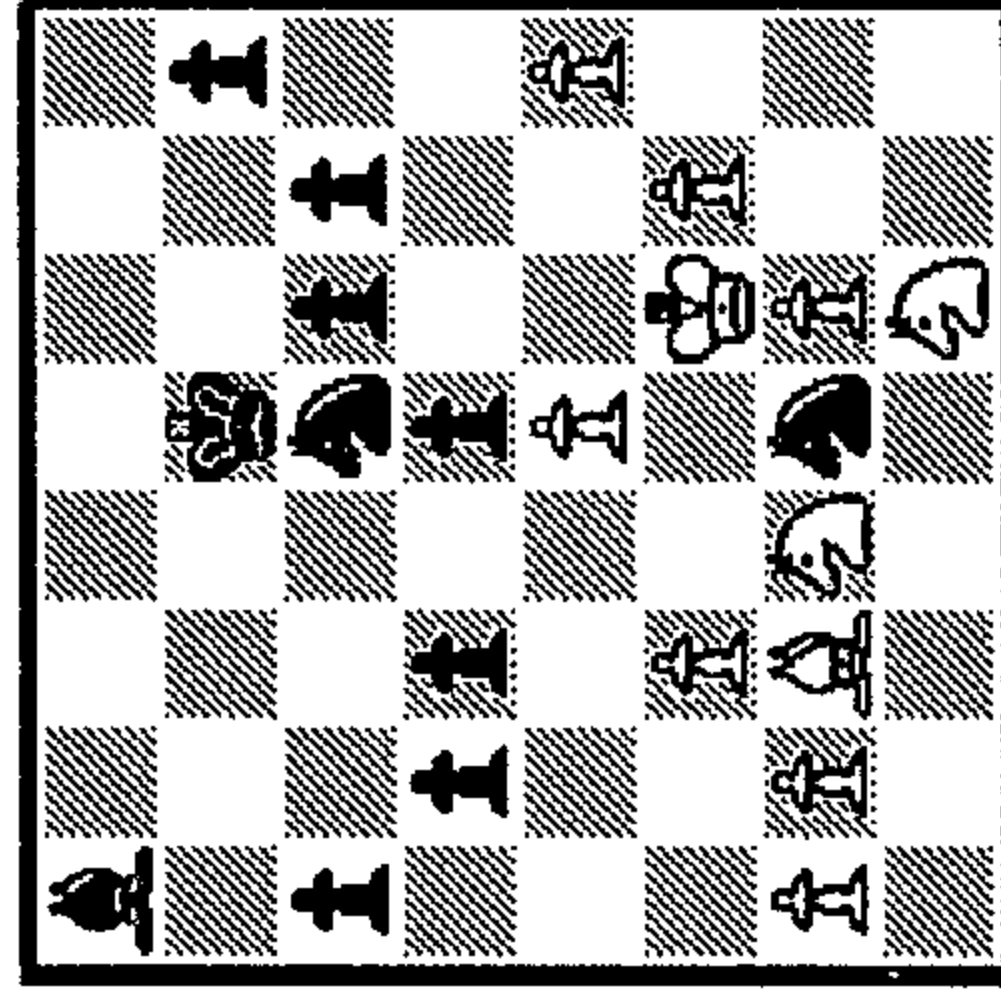
165 1...?

- 1\_
- 2\_
- 3\_



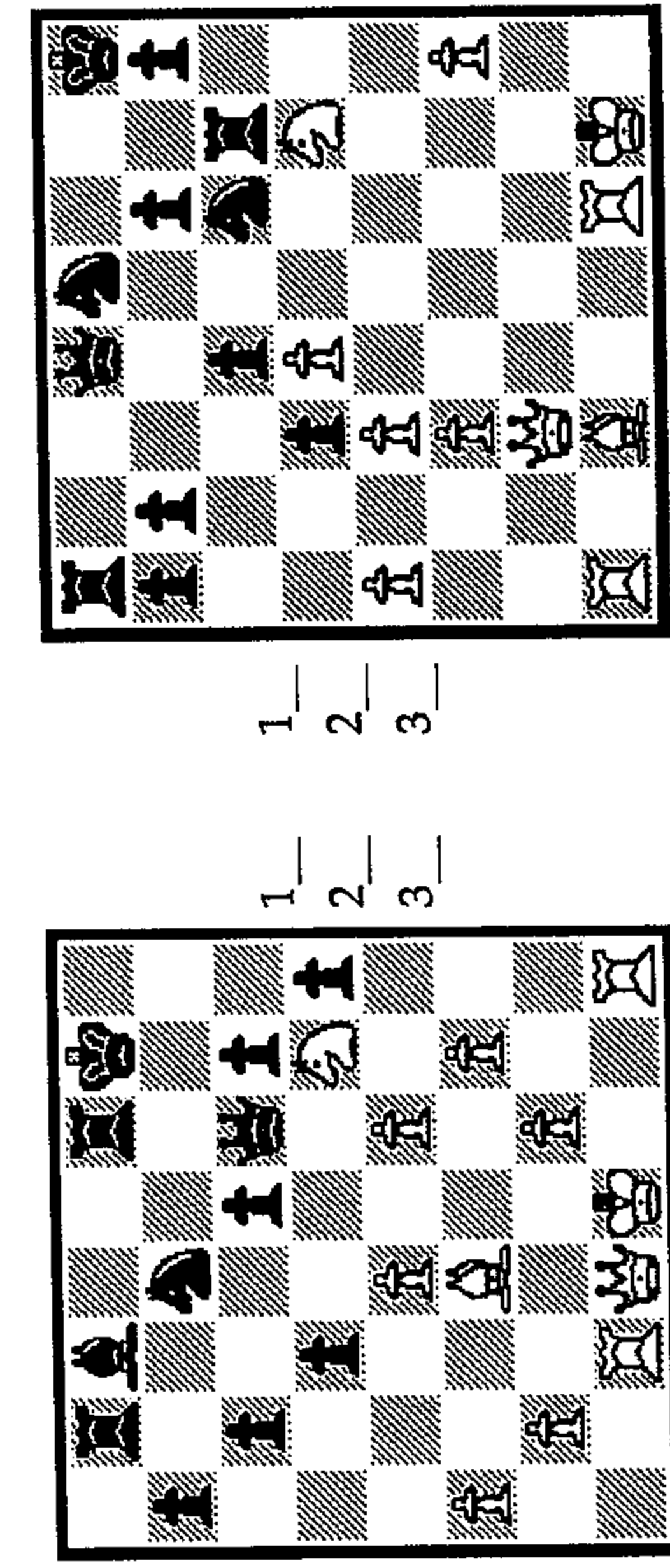
170 1...?

- 1\_
- 2\_
- 3\_



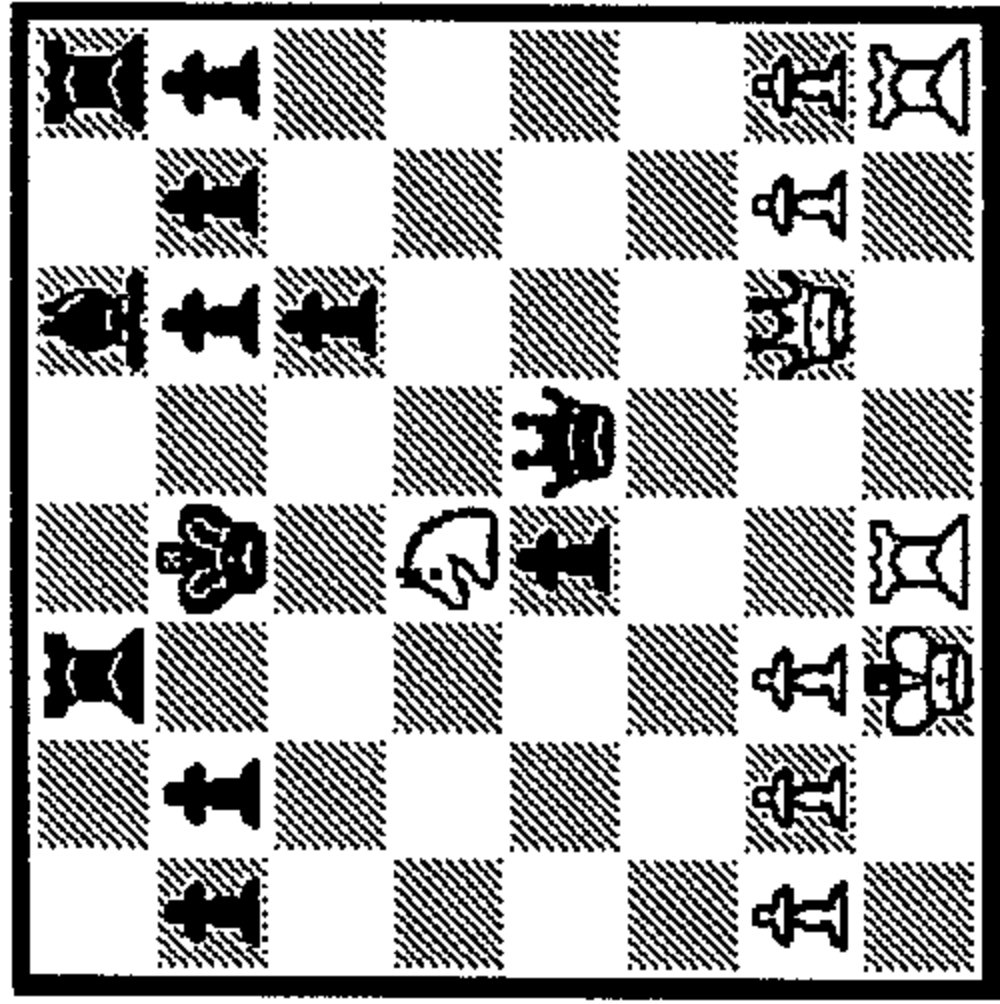
171 1...?

- 1\_
- 2\_
- 3\_



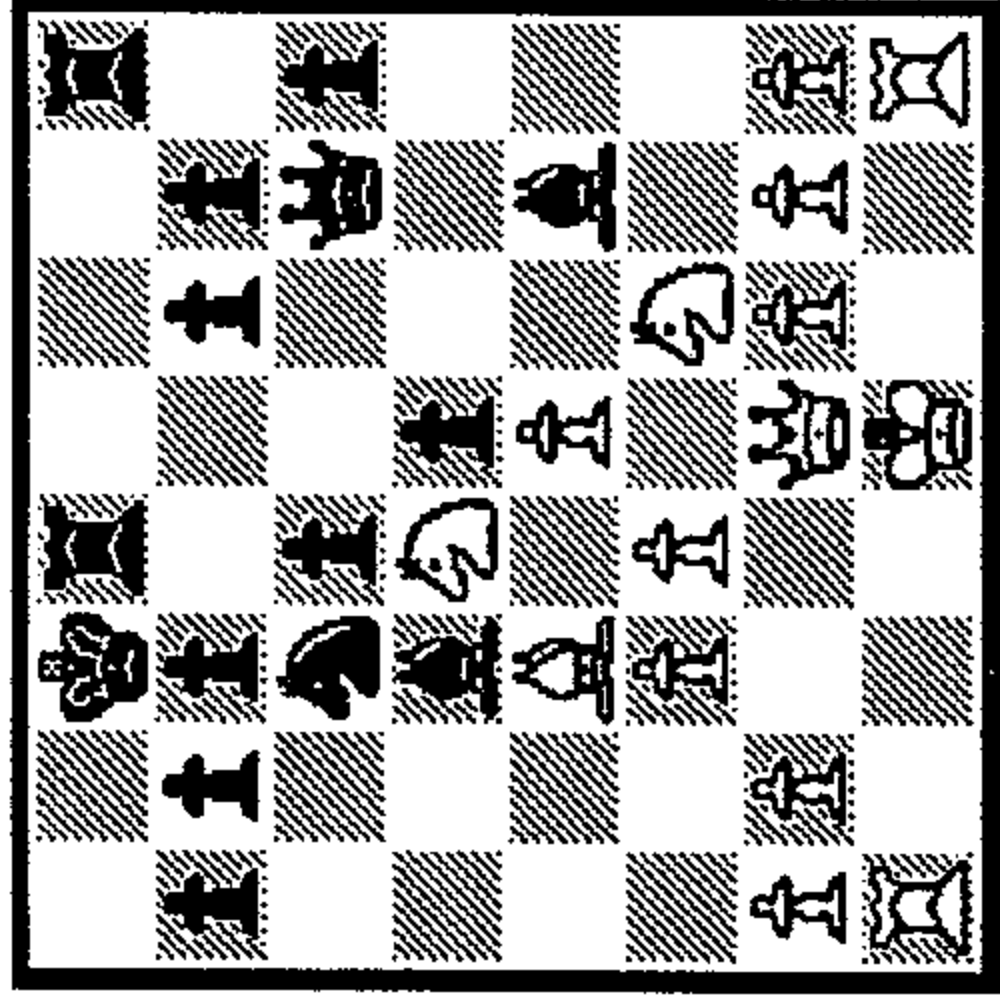
1-  
2-  
3-

172 1.?



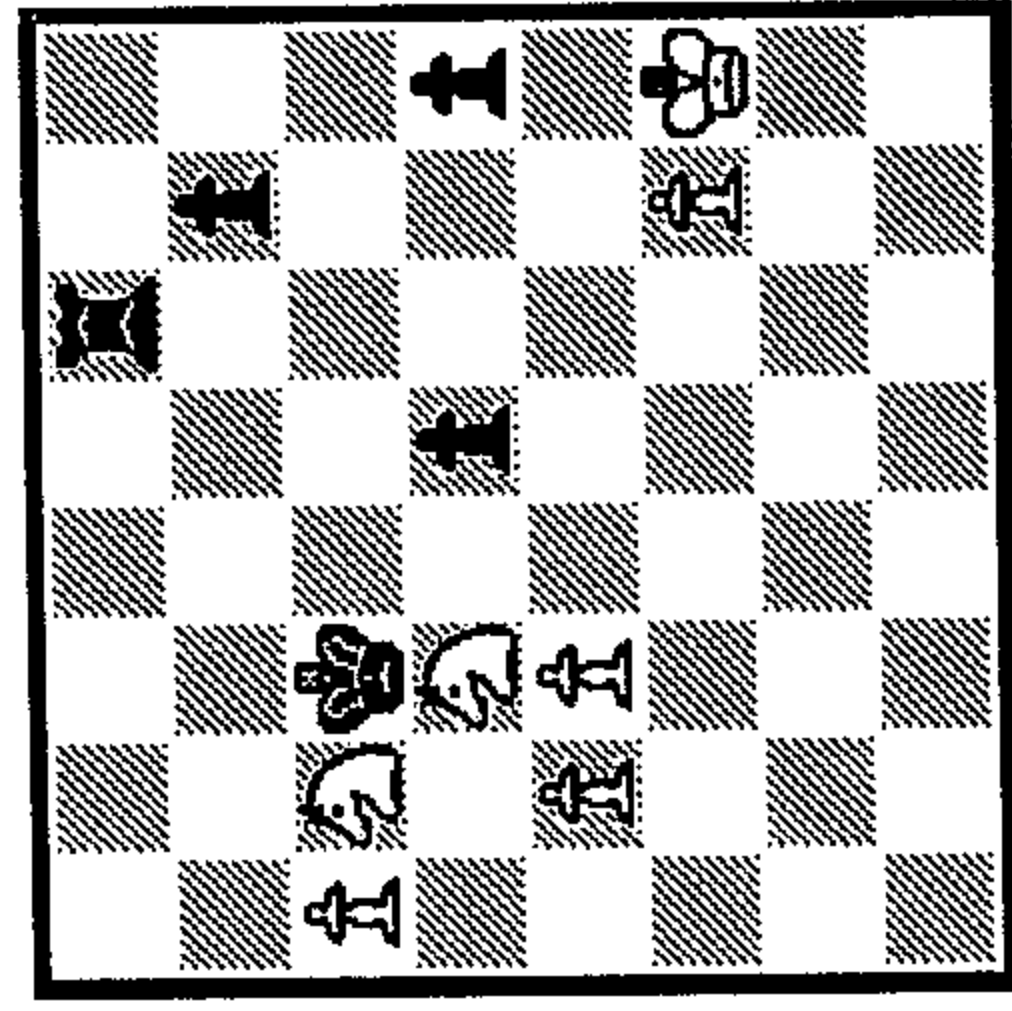
1-  
2-  
3-

178 1.?



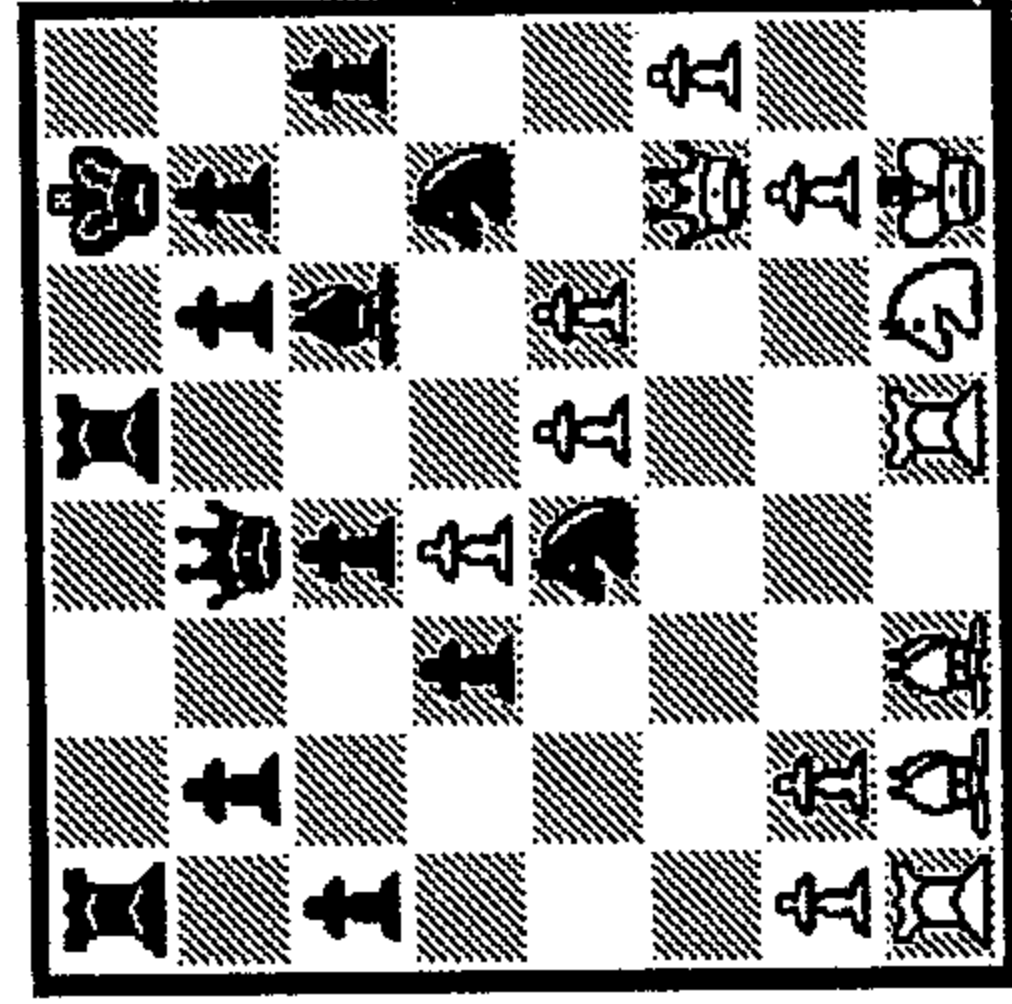
1-  
2-  
3-

179 1.?



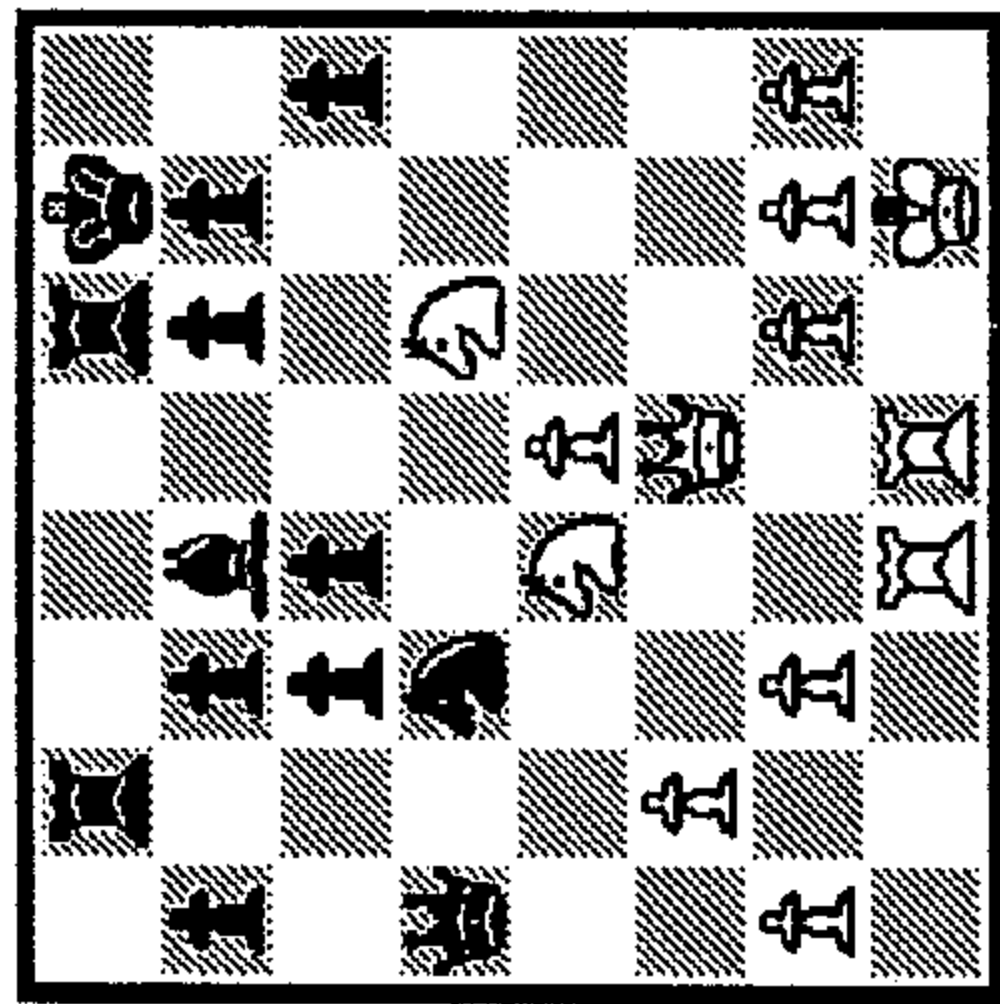
1-  
2-  
3-

174 1.?



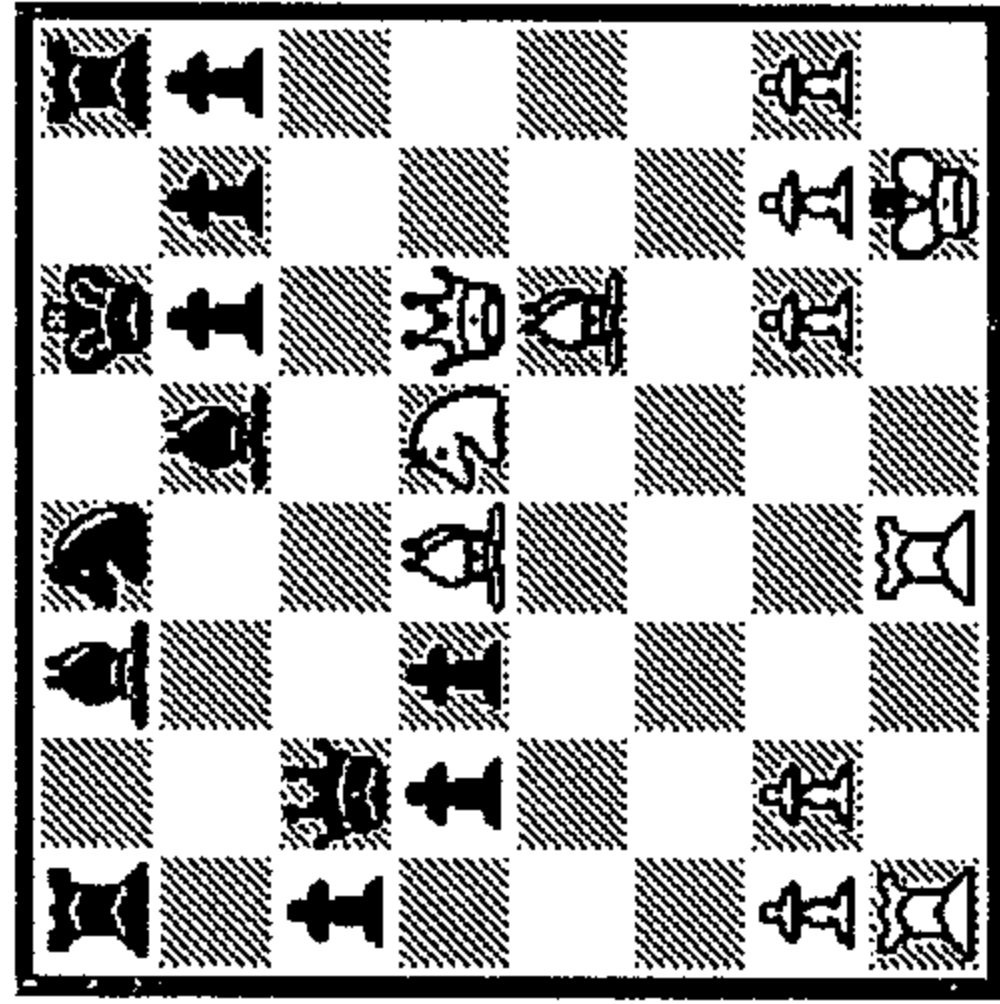
1-  
2-  
3-

175 1...?



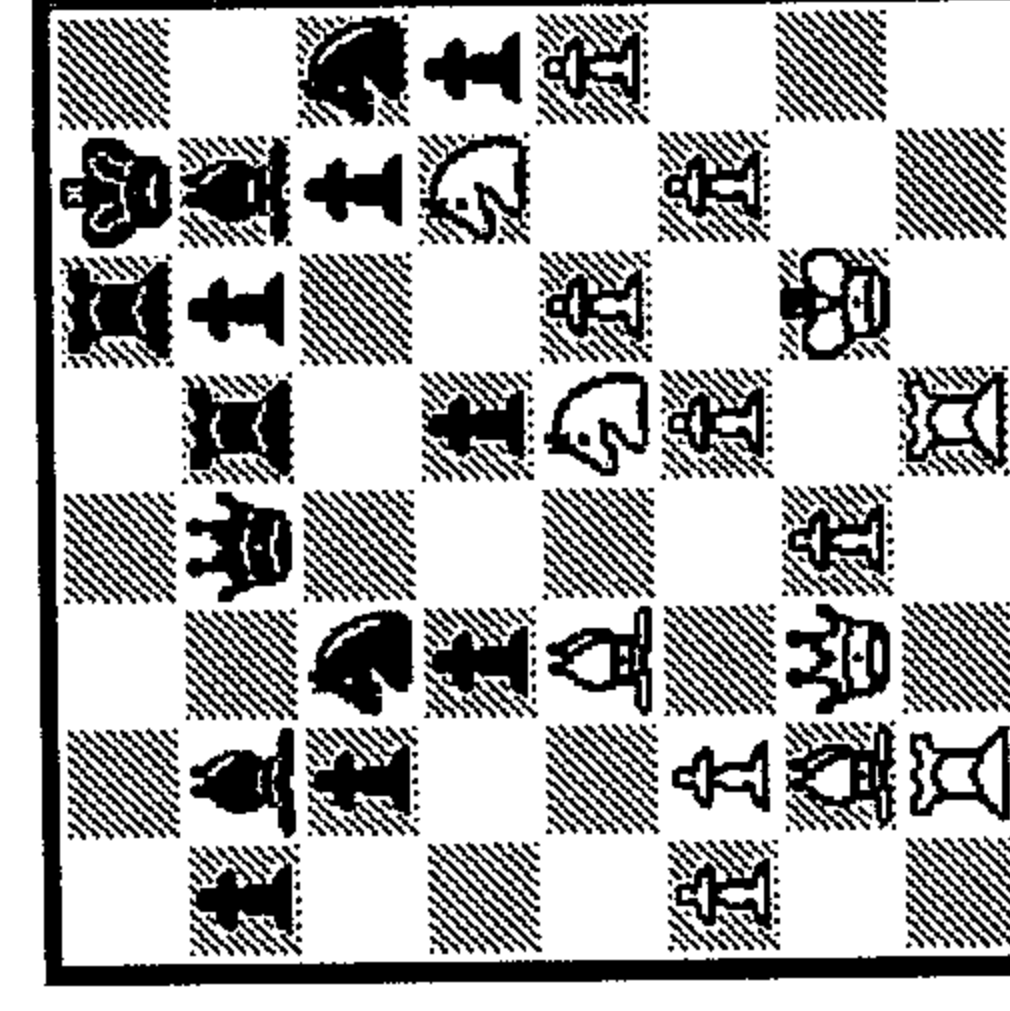
1-  
2-  
3-

180 1.?



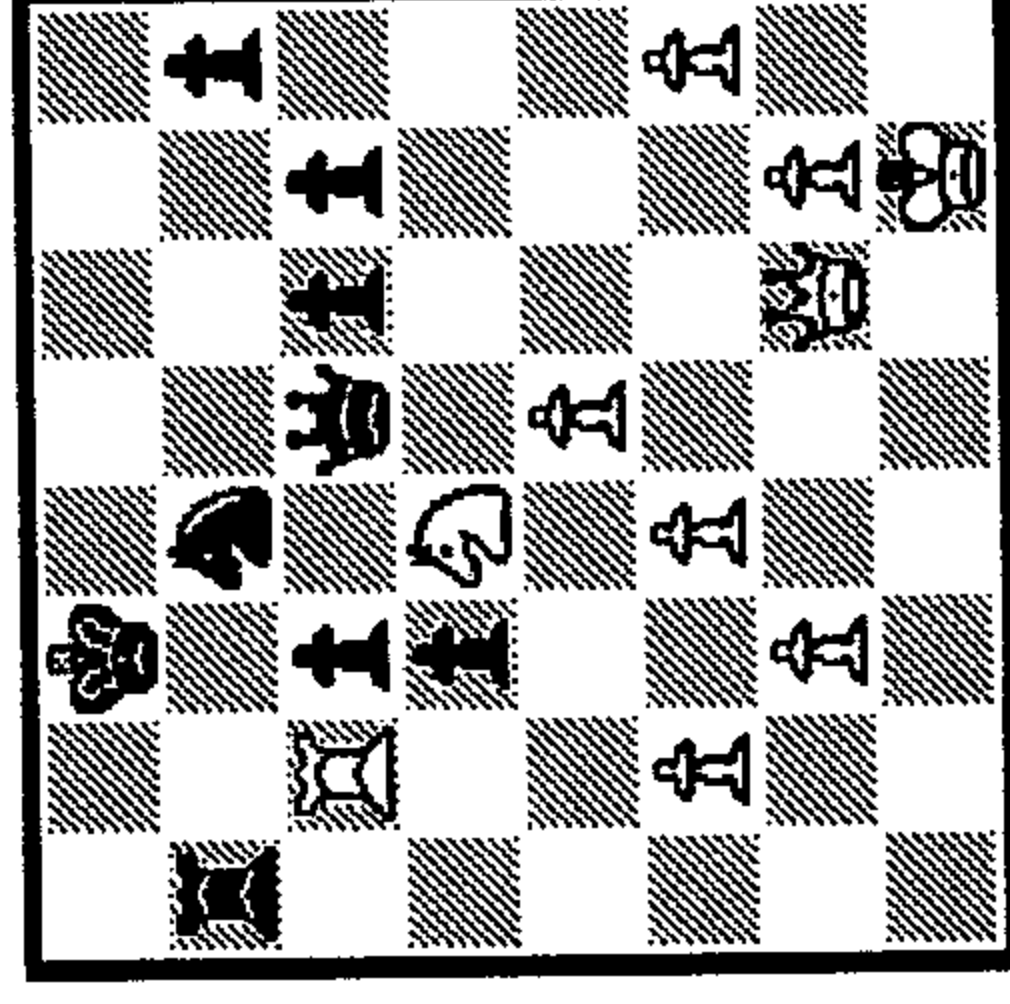
1-  
2-  
3-

181 1.?



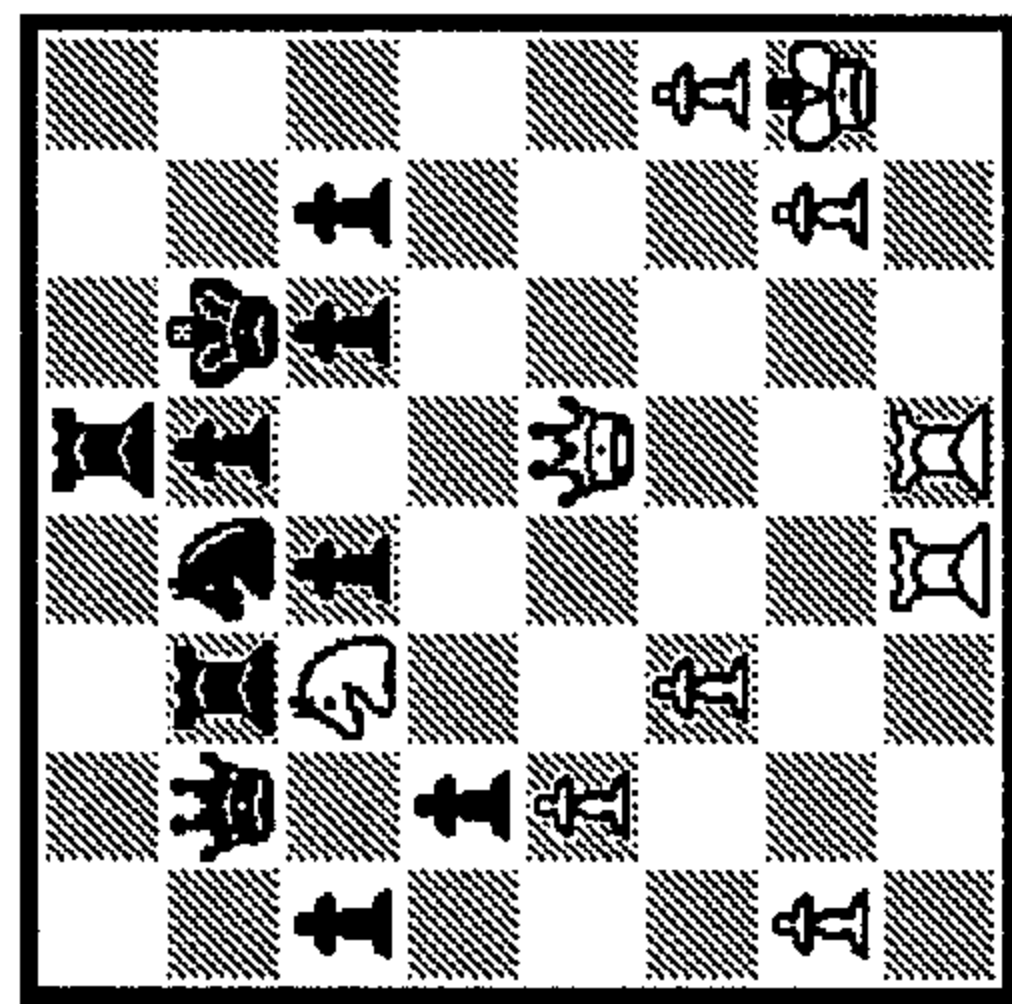
1-  
2-  
3-

176 1.?



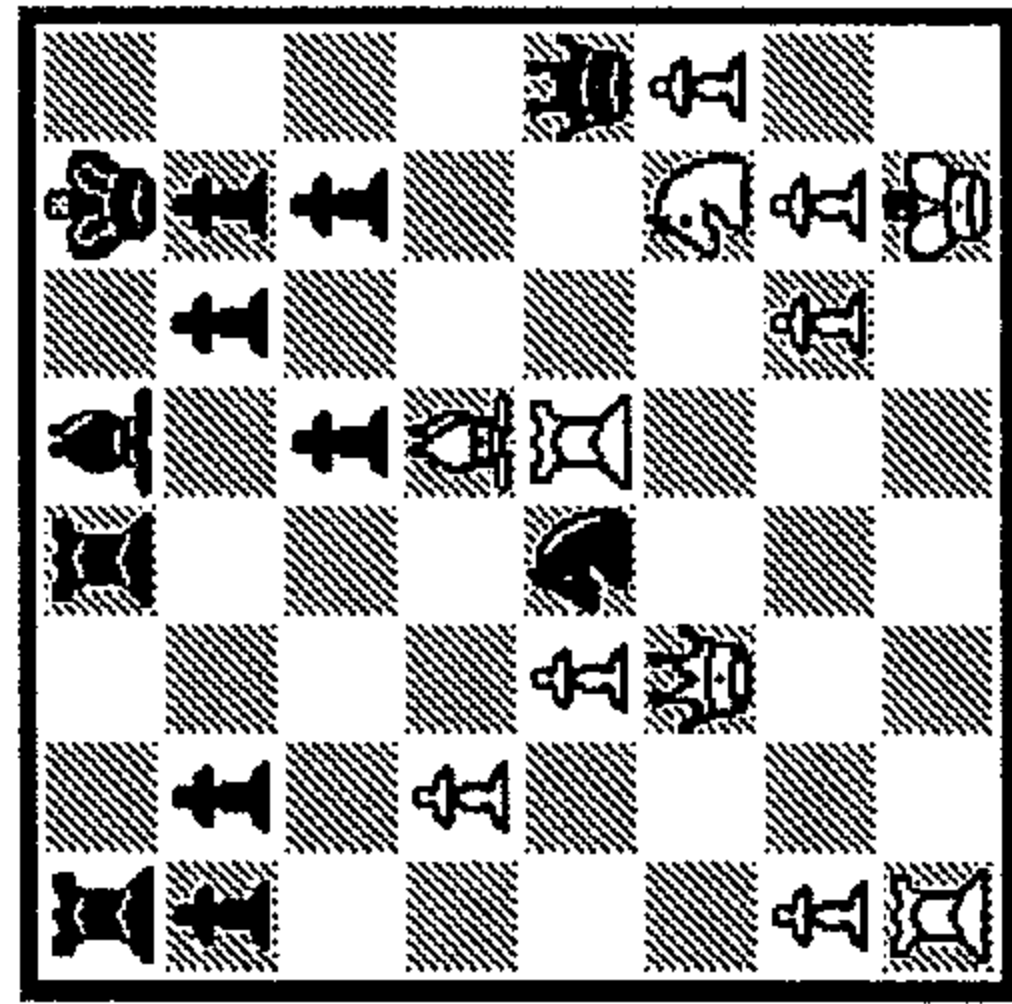
1-  
2-  
3-

177 1.?



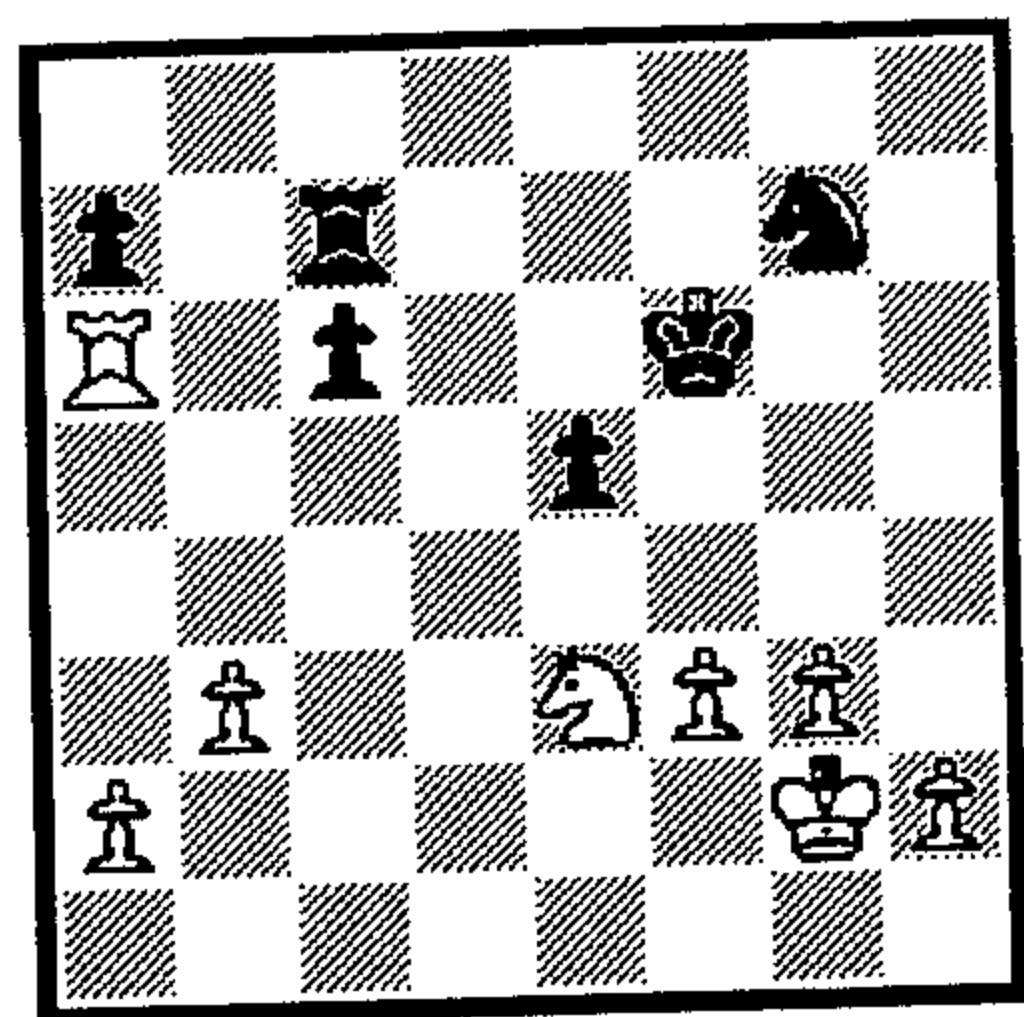
1-  
2-  
3-

182 1.?



1-  
2-  
3-

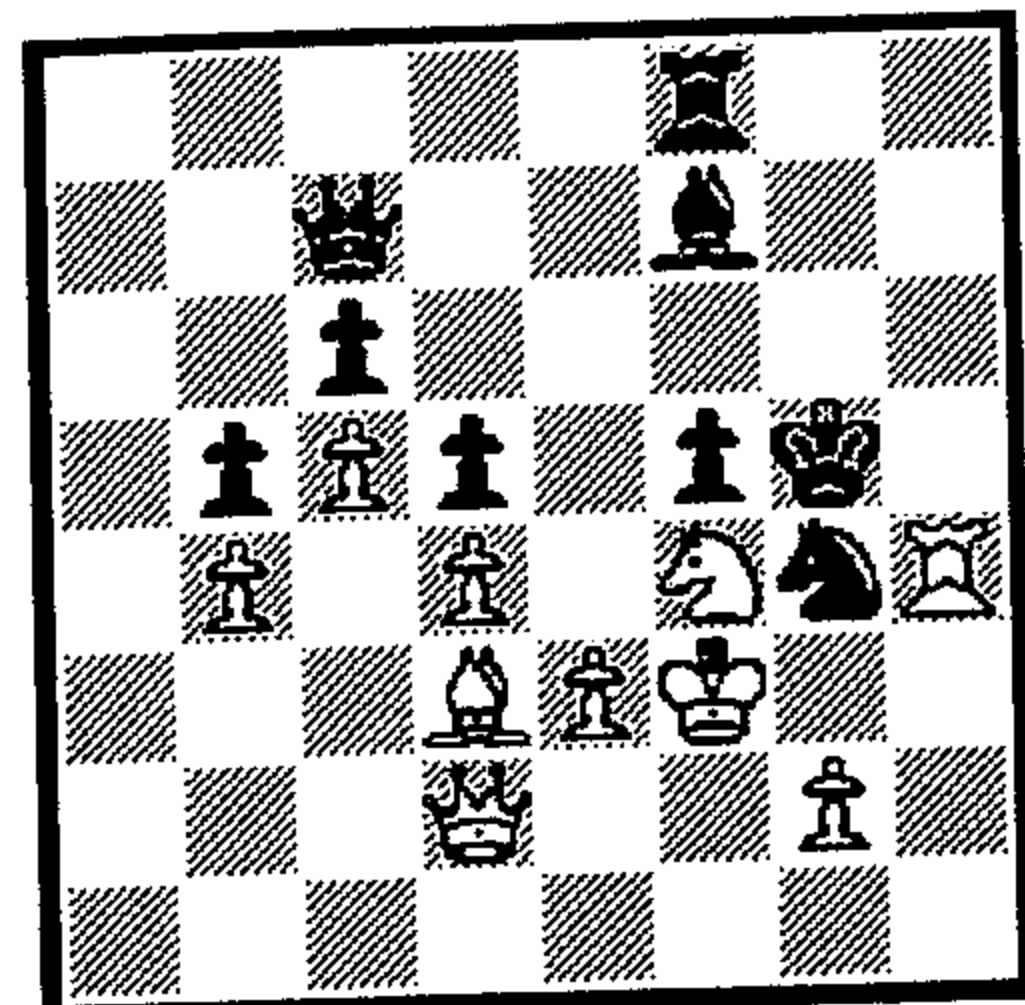
183 1...?



184

1. ?

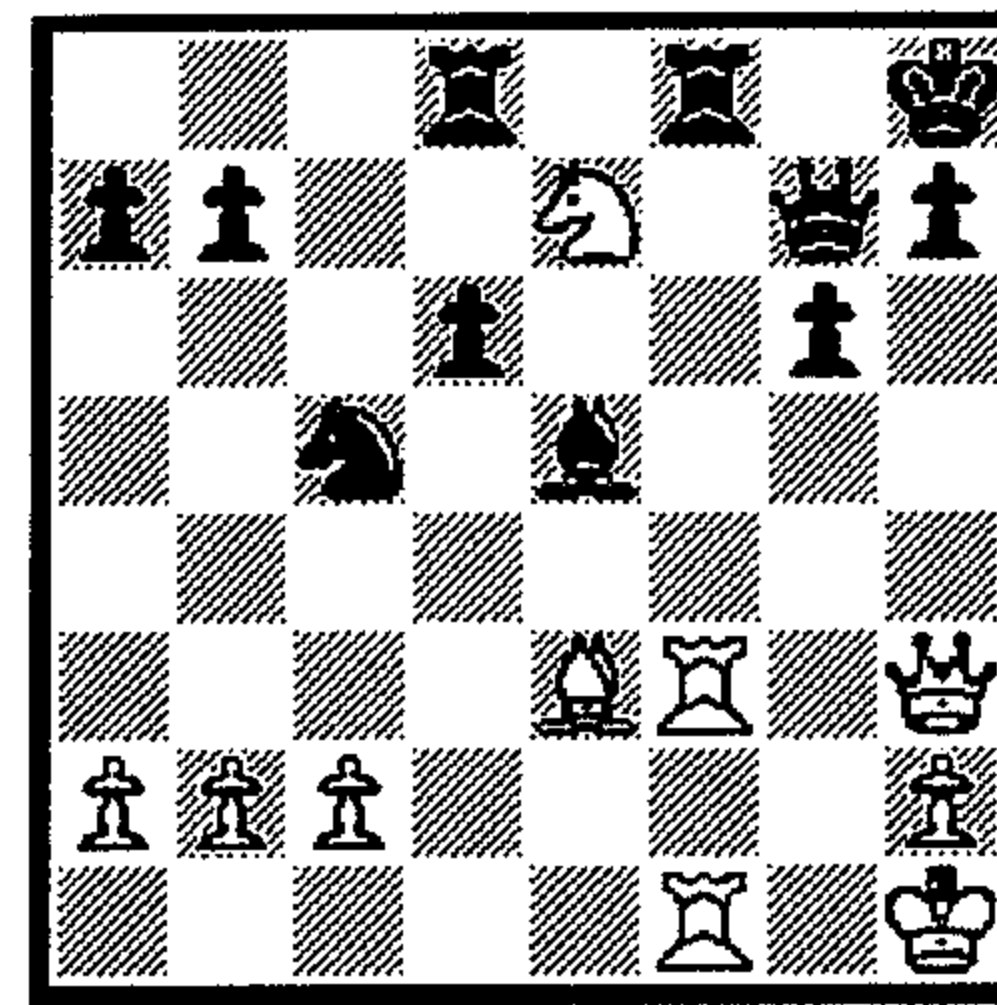
1  
2  
3



185

1. ?

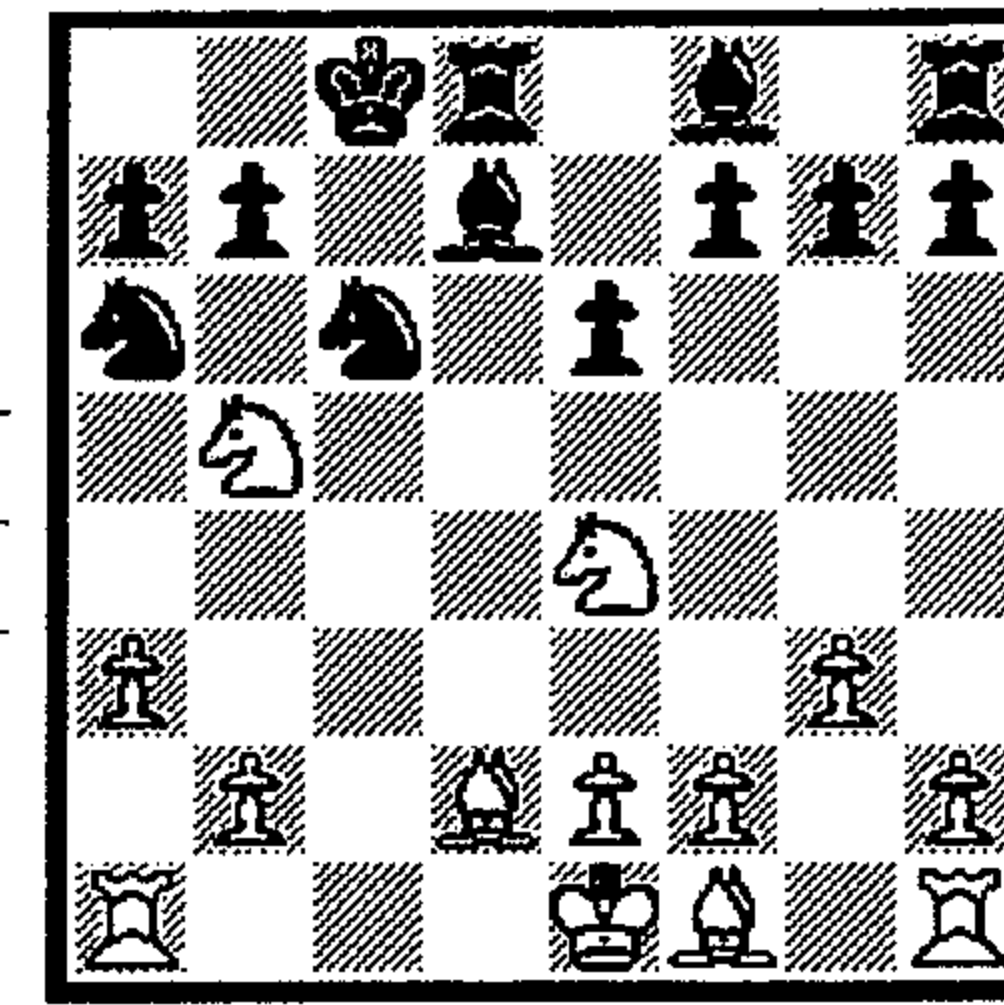
1  
2  
3



190

1. ?

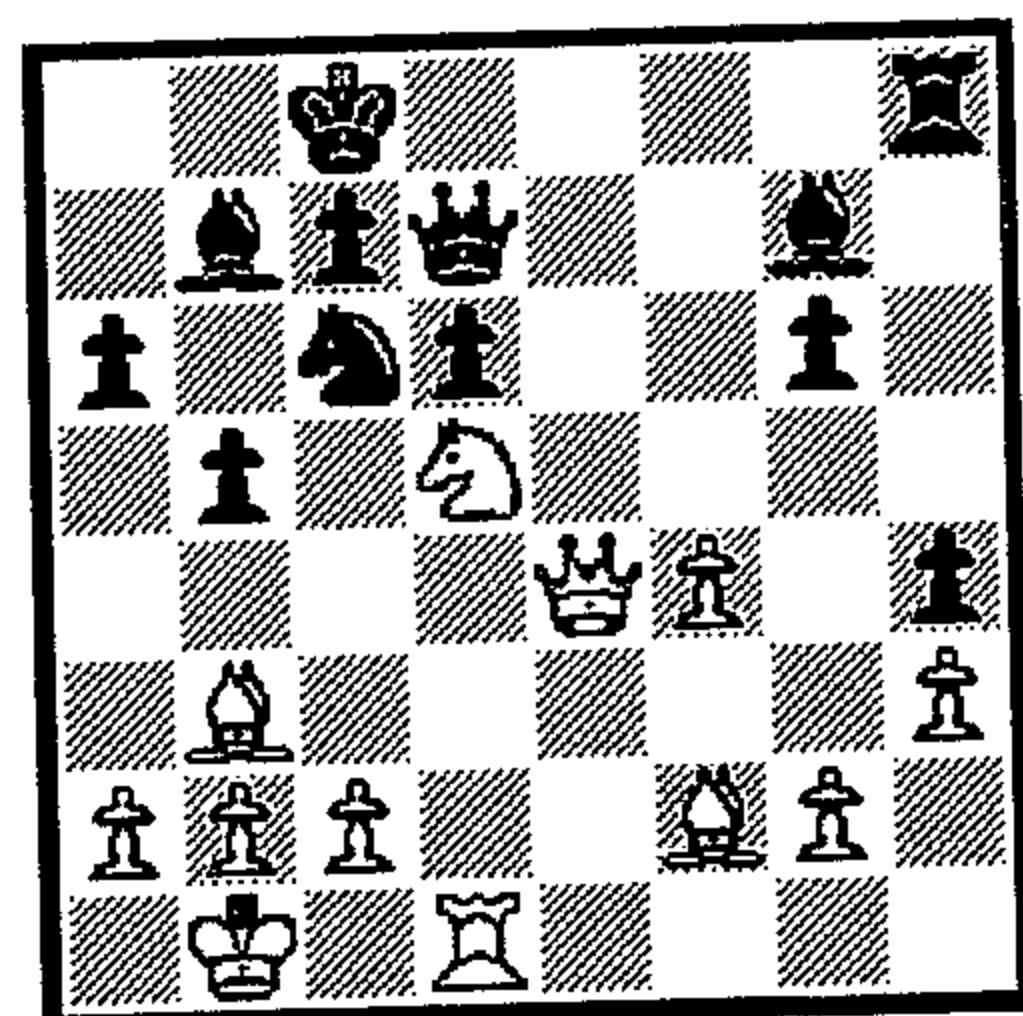
1  
2  
3



191

1. ?

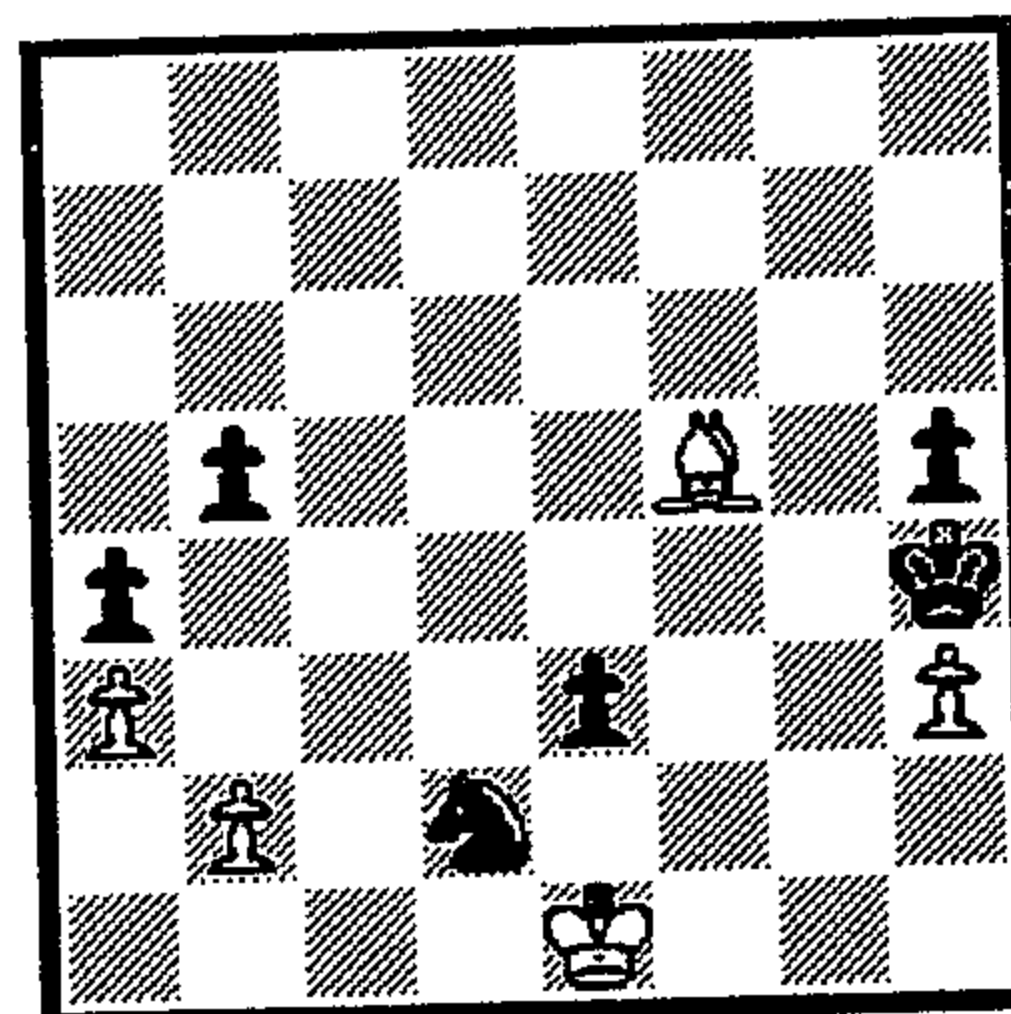
1  
2  
3



186

1. ?

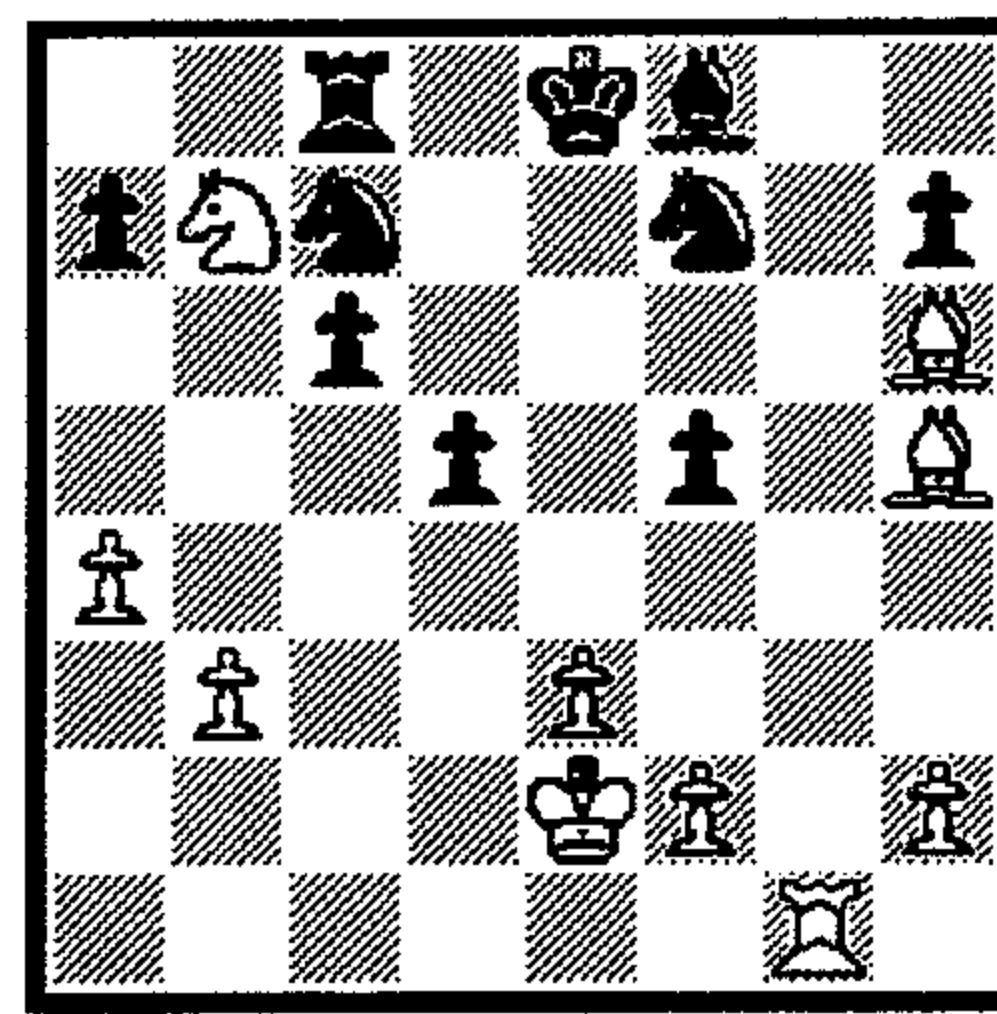
1  
2  
3



187

1... ?

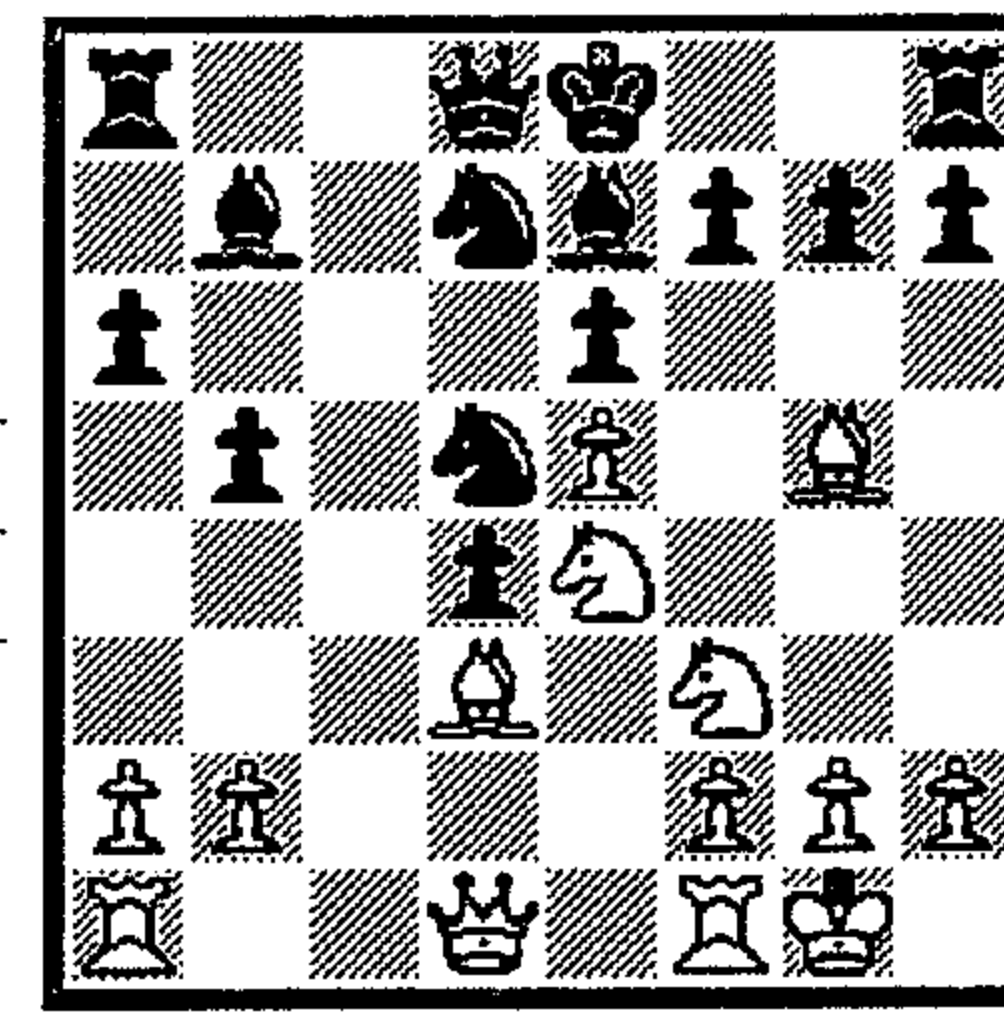
1  
2  
3



192

1. ?

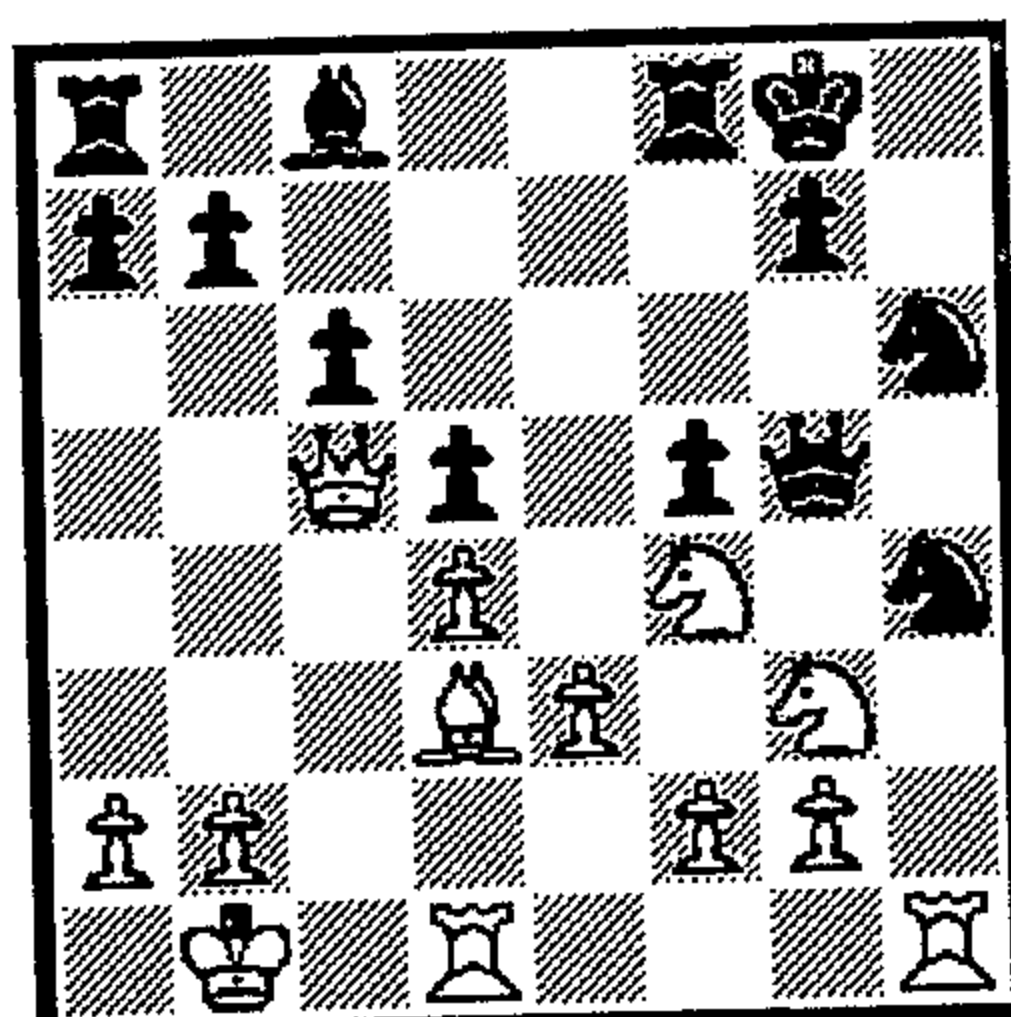
1  
2  
3



193

1. ?

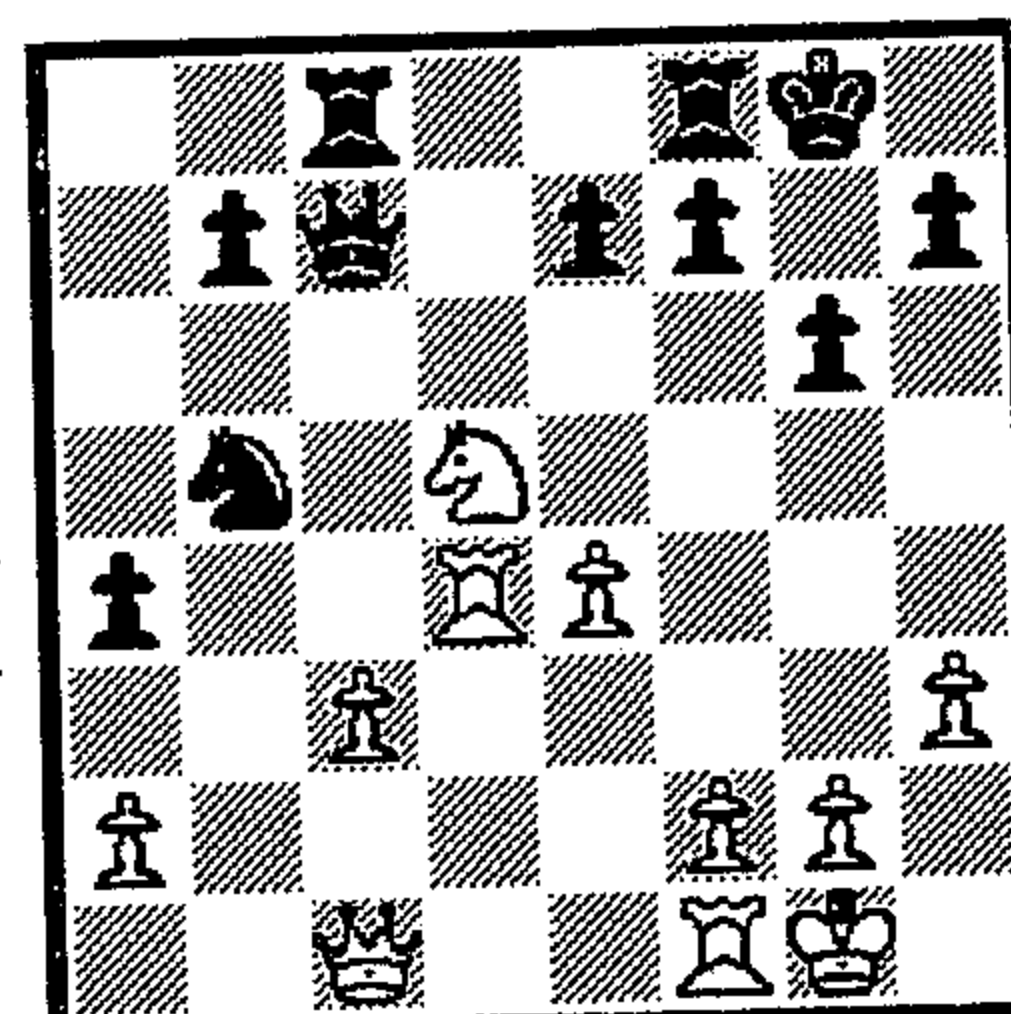
1  
2  
3



188

1. ?

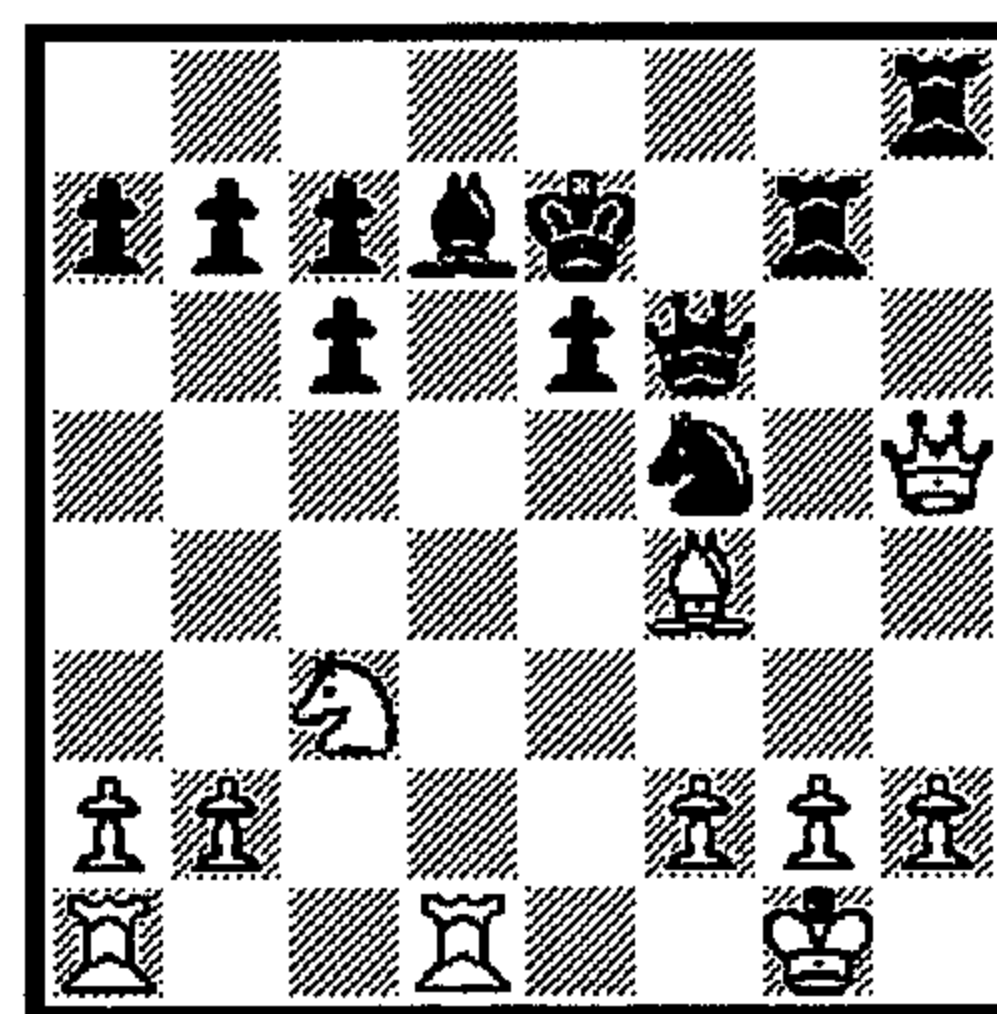
1  
2  
3



189

1... ?

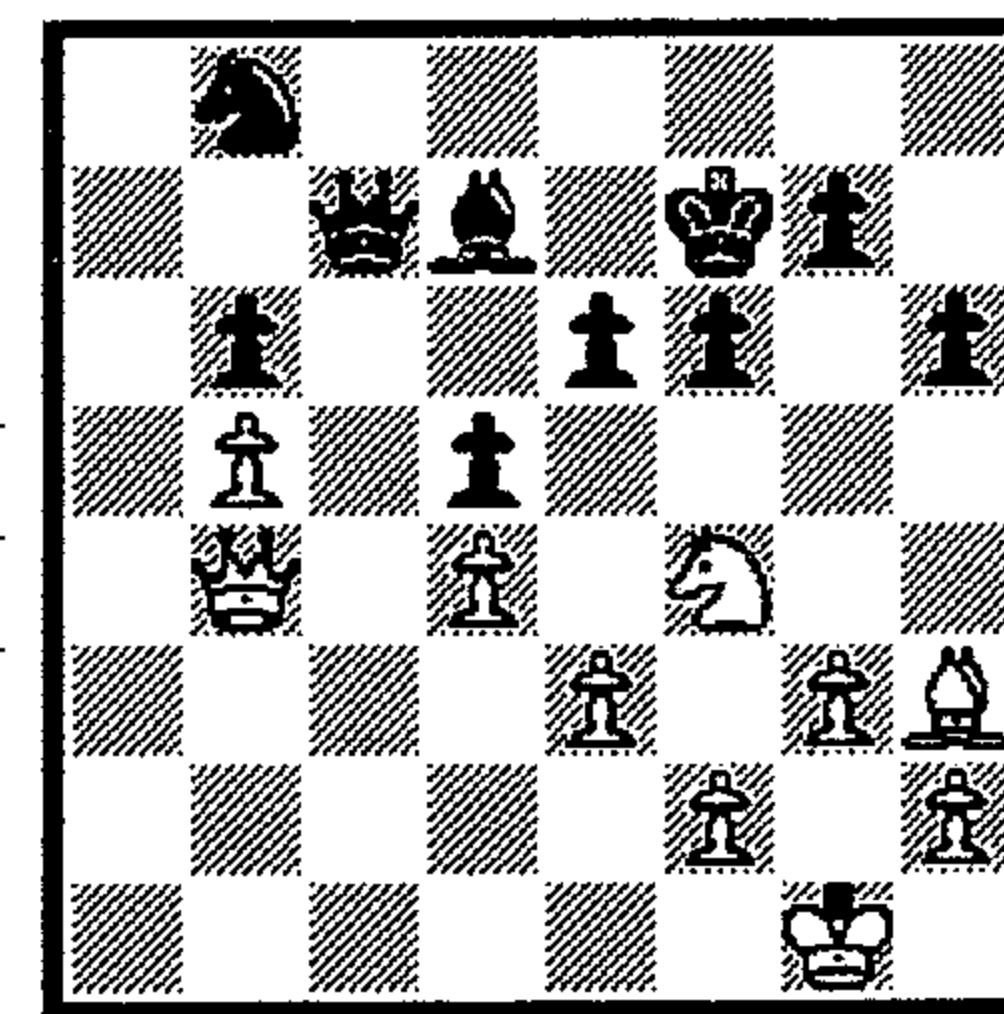
1  
2  
3



194

1. ?

1  
2  
3



195

1. ?

1  
2  
3