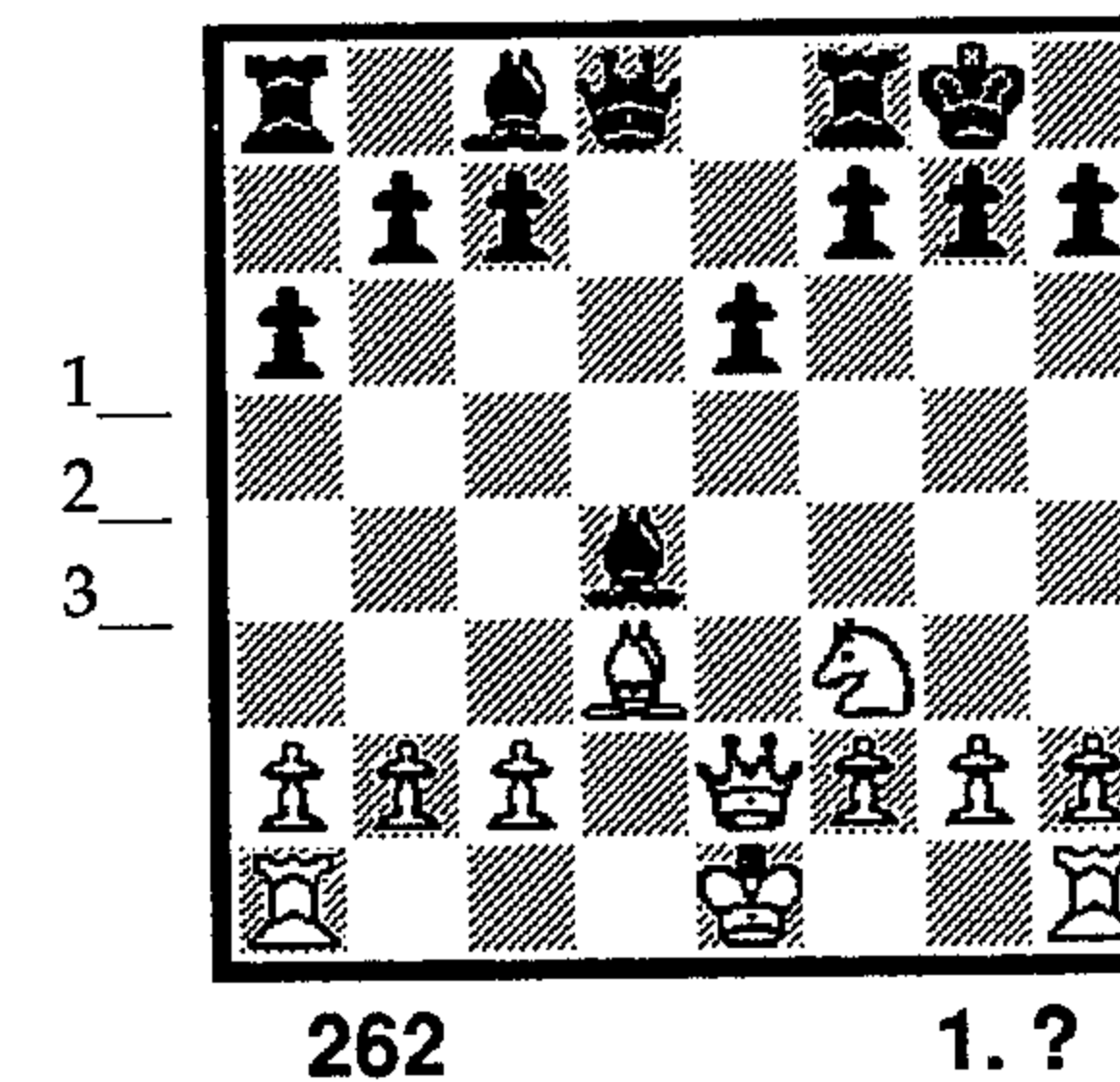
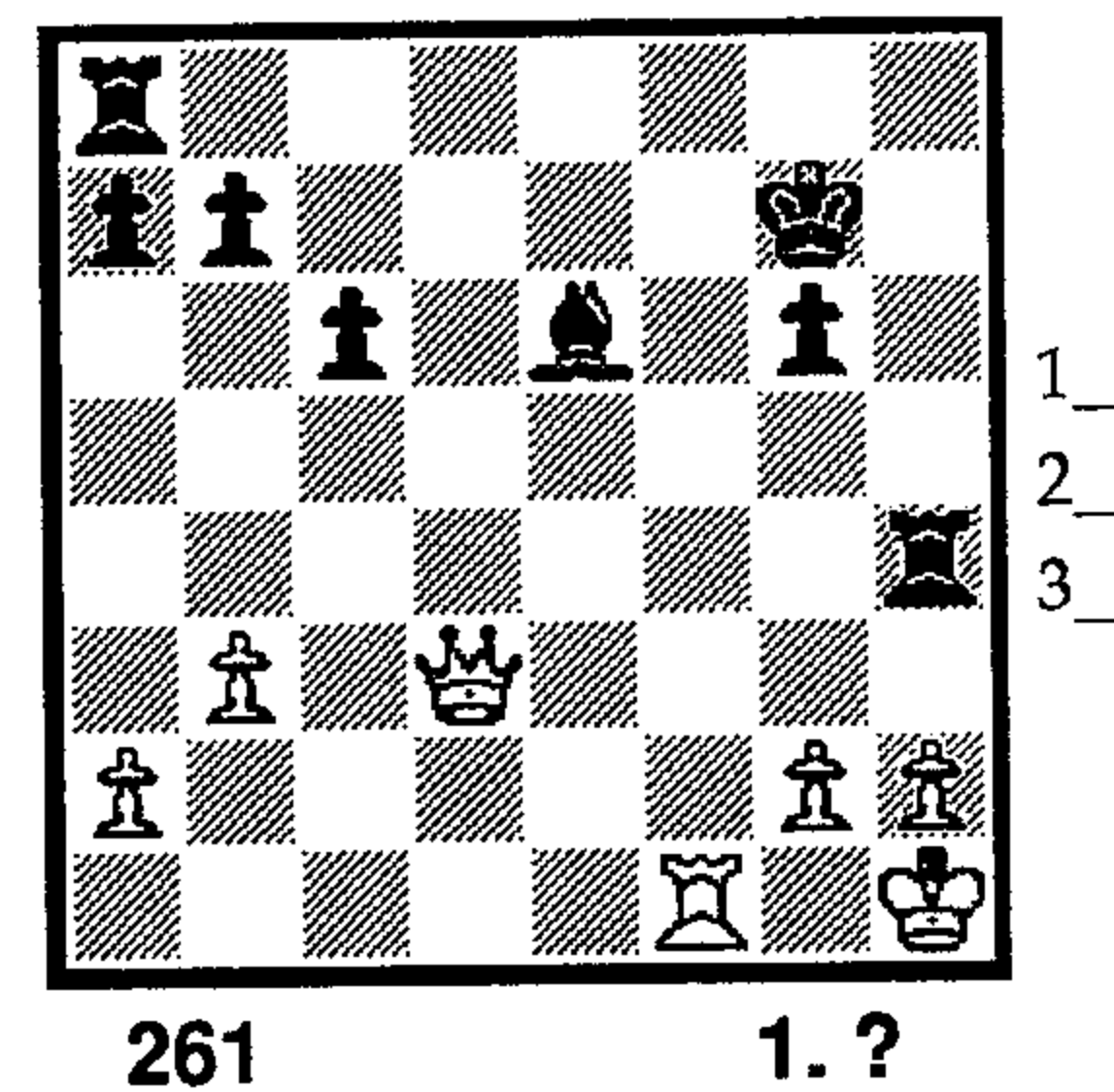
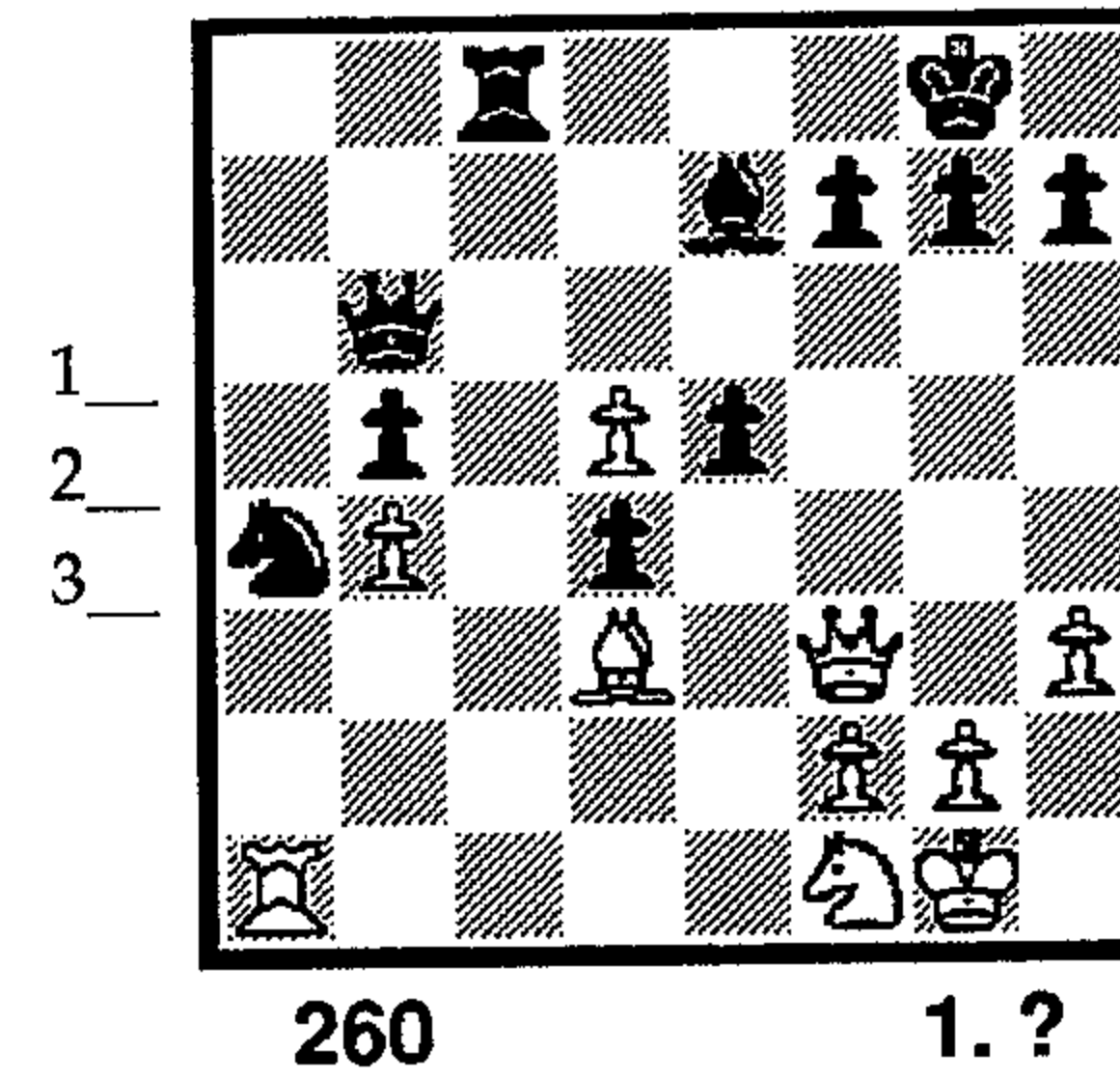
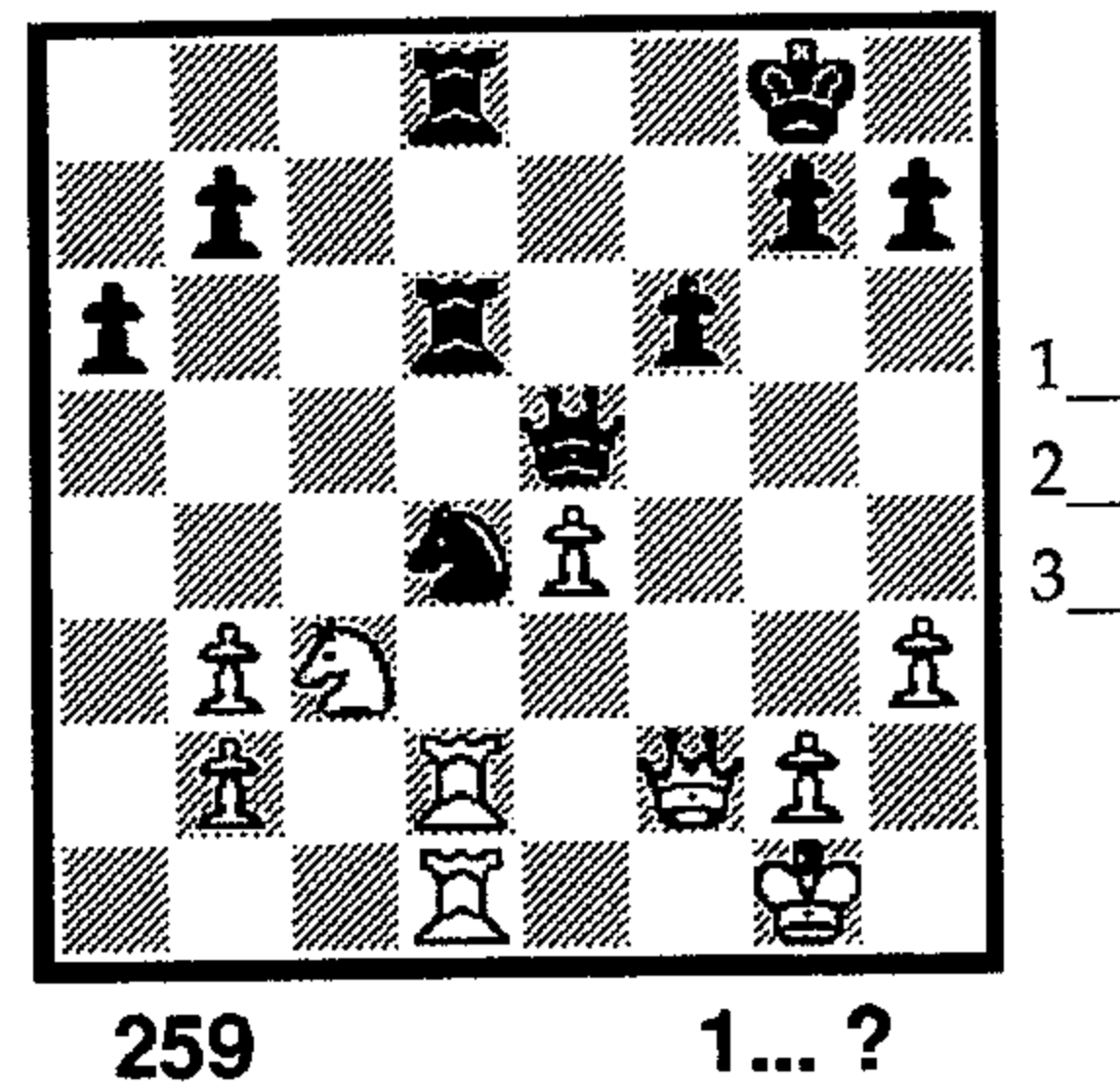
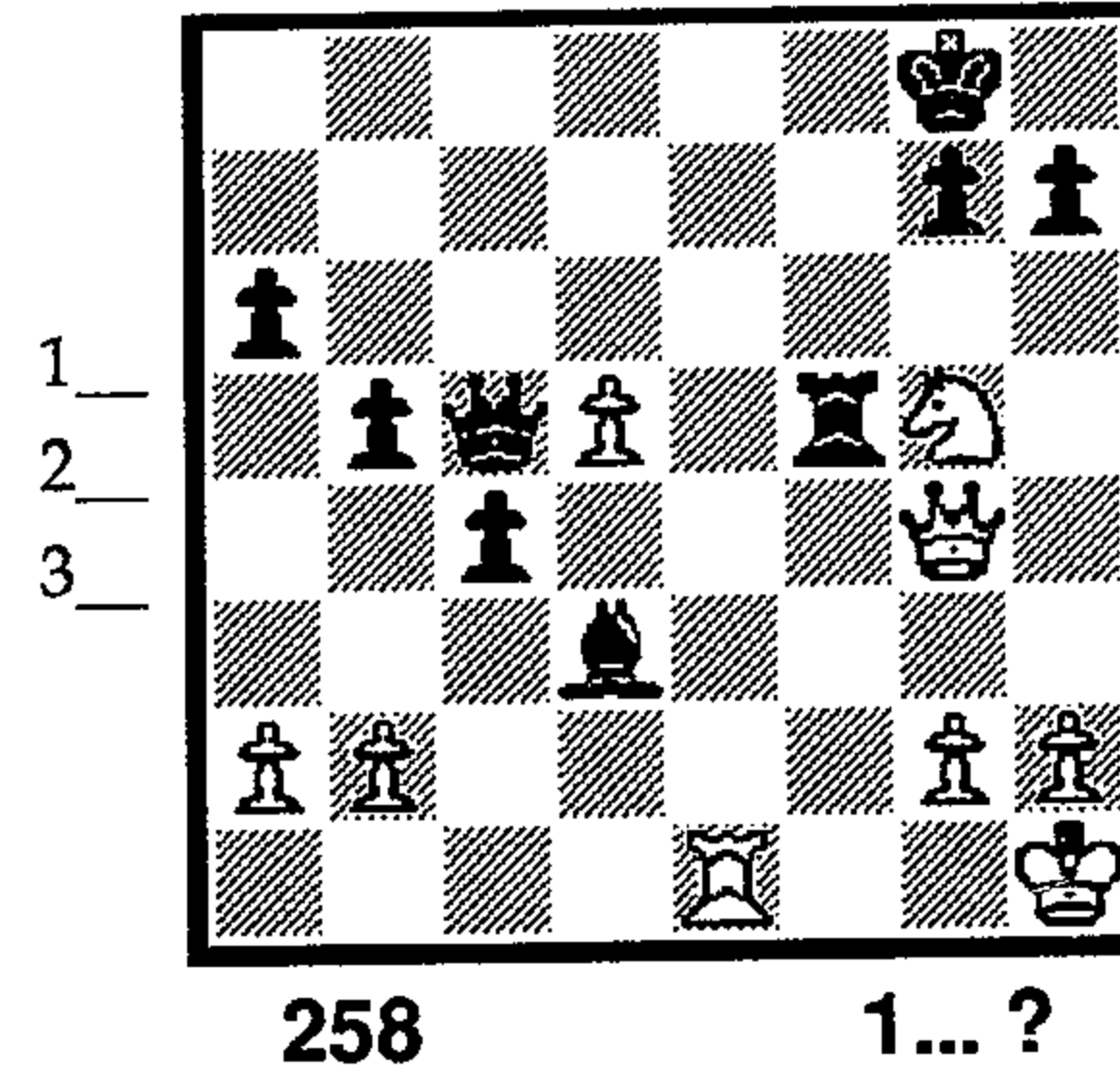
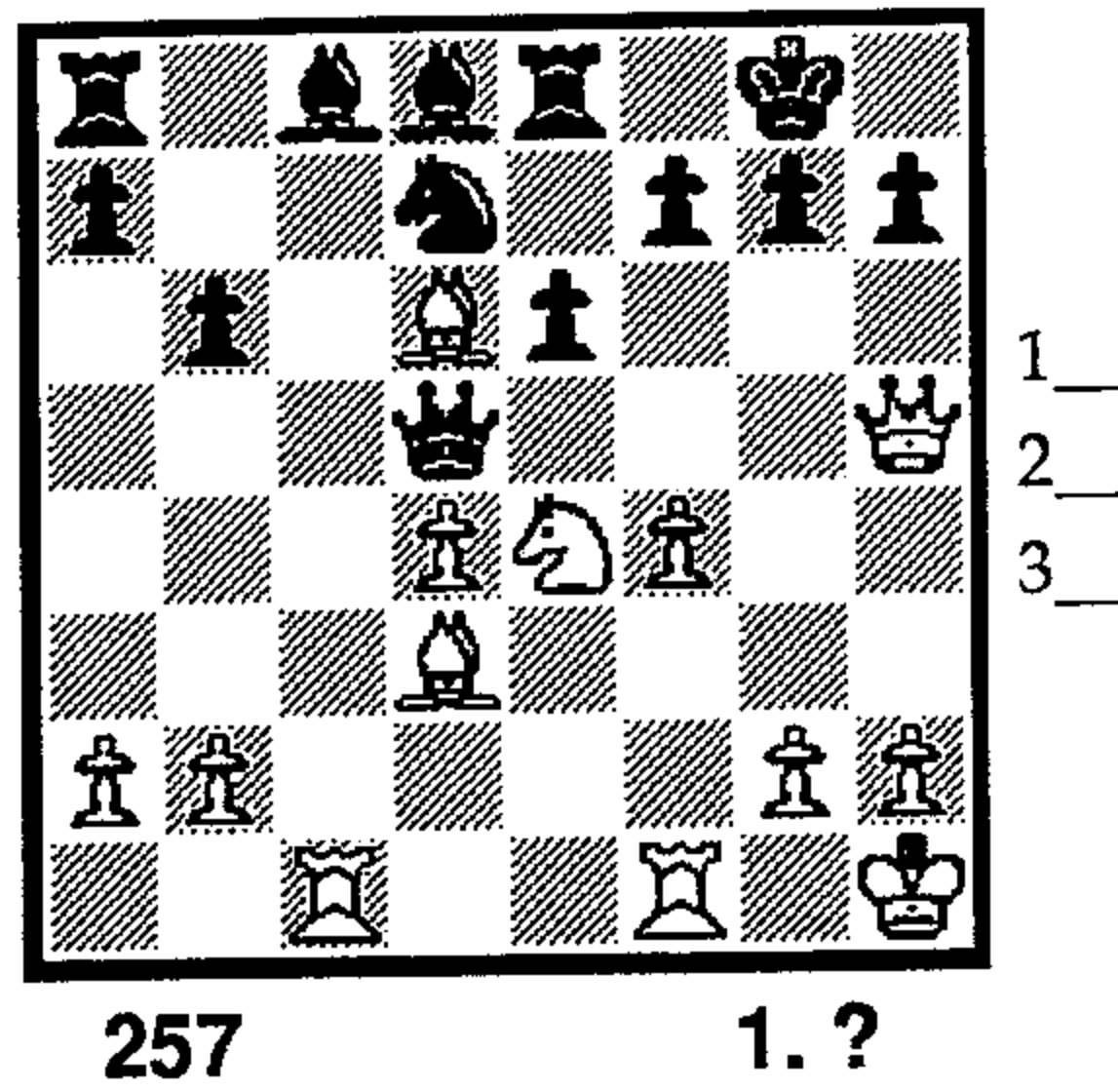
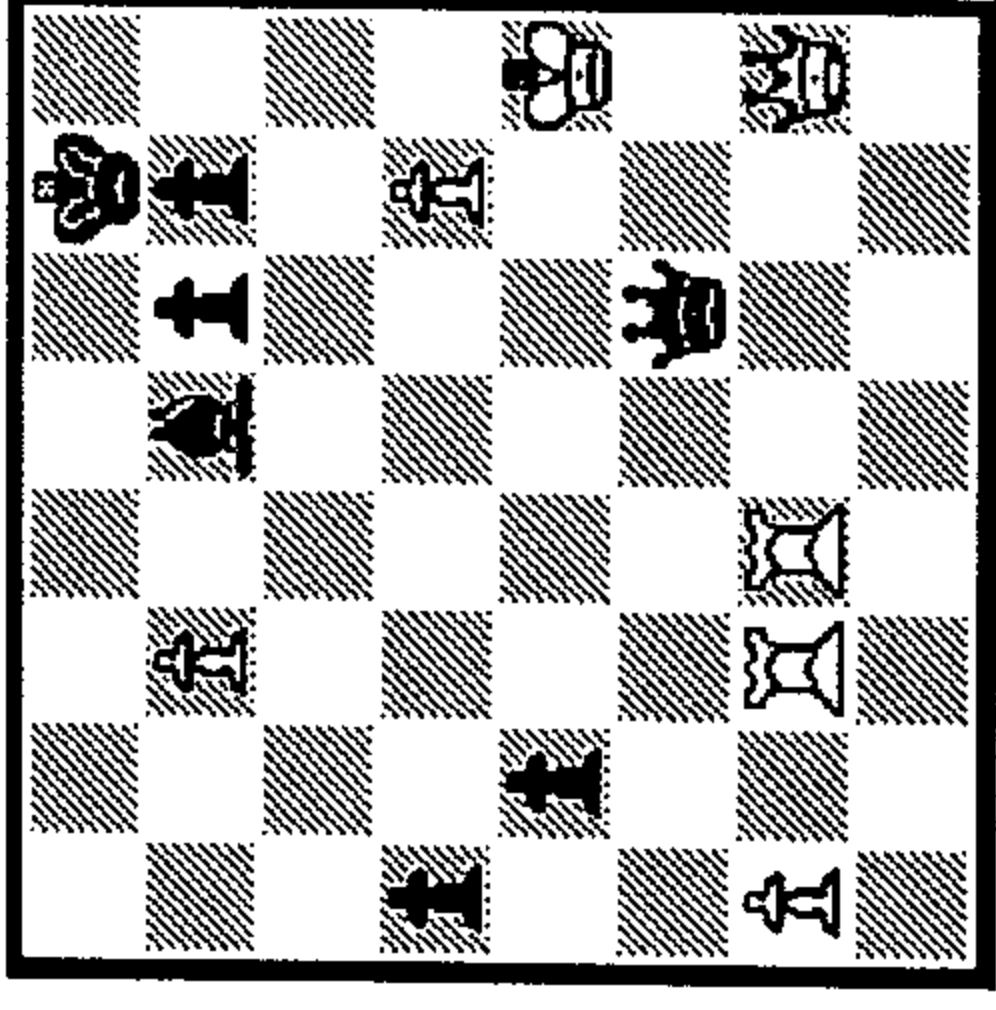


ATTRACTION

This device is usually employed to attract an enemy piece onto an unfavorable square. Sometimes this implies that the piece being so attracted is placed under attack. The actual attraction is usually accomplished by a forcing sacrifice. Often a sacrifice will attract the King, exposing it to attack. One of the most famous types of attraction occurs with the so called "Greek Gift" sacrifice of a Bishop at h7 (Bxh7+, or with Black, ...Bxh2+). The attraction motif occurs quite frequently and careful analysis is suggested.

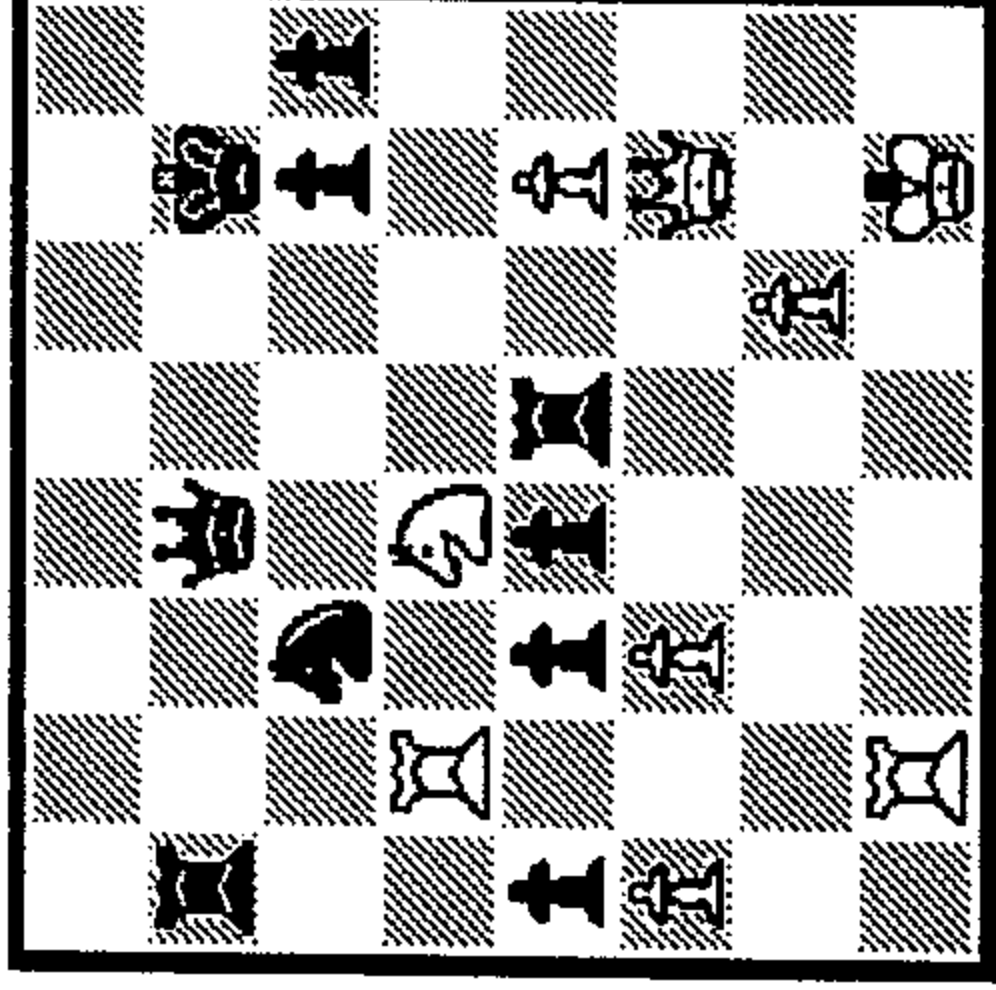




263

1...?

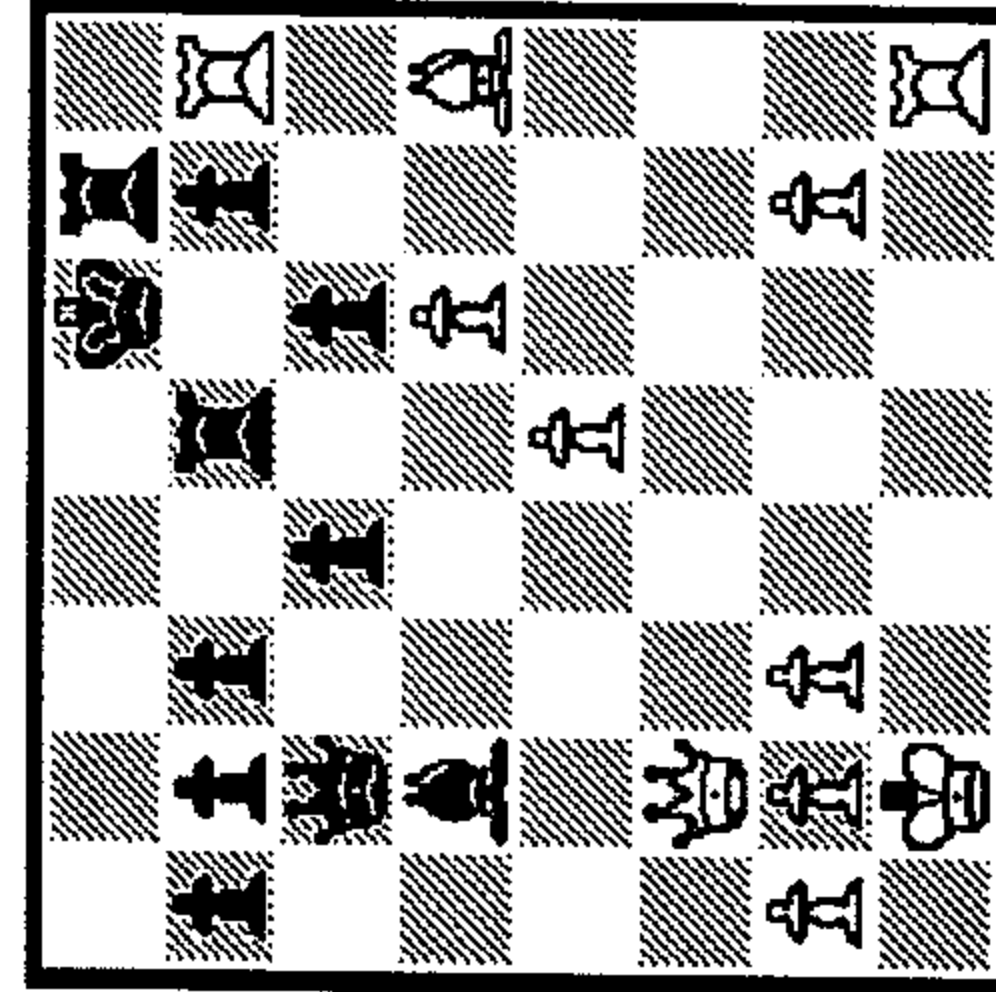
- 1_
- 2_
- 3_



264

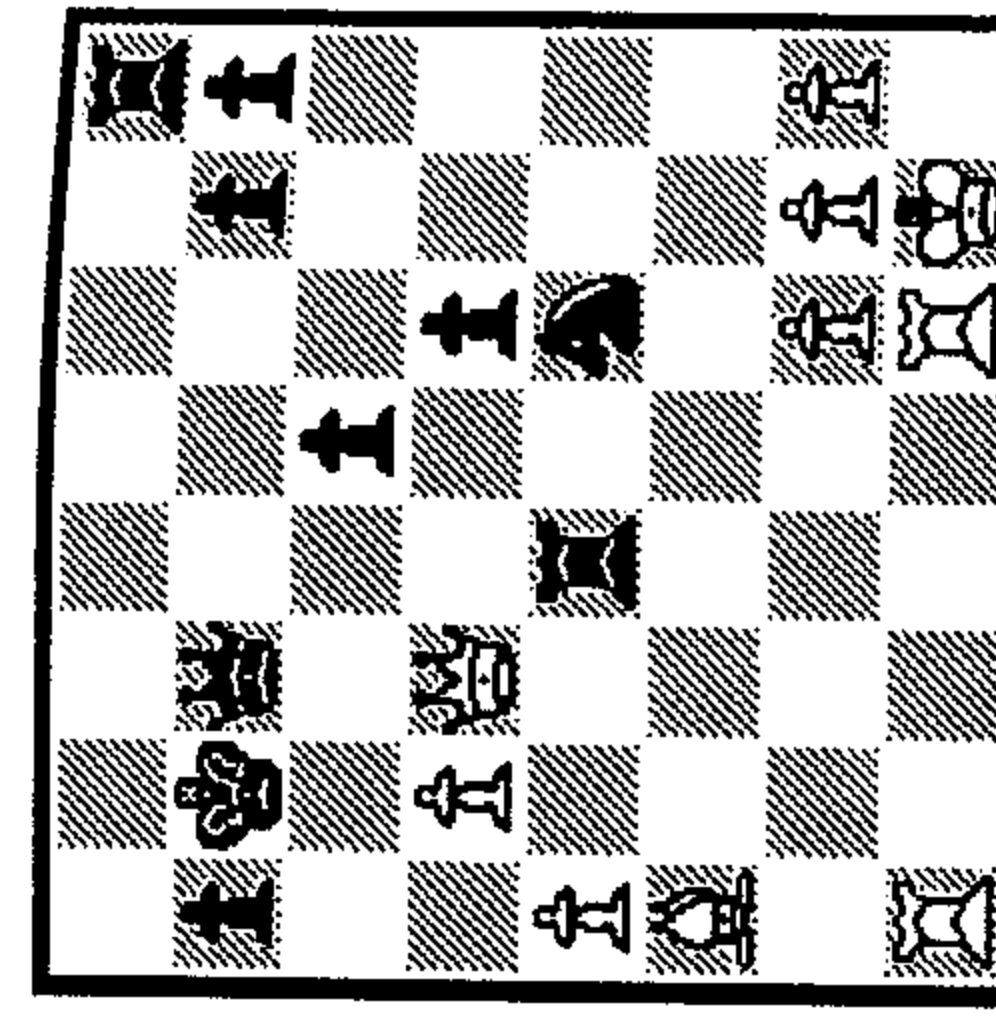
1.?

- 1_
- 2_
- 3_



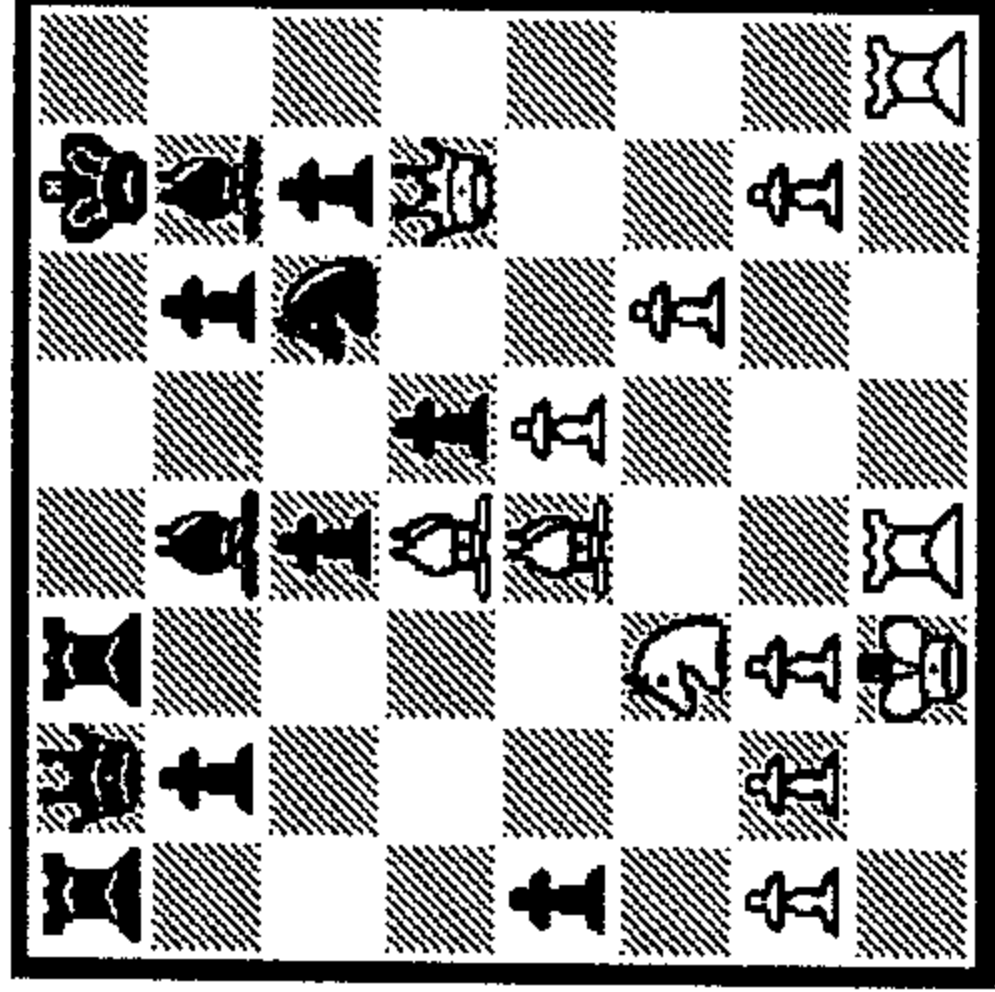
269

1.?



270

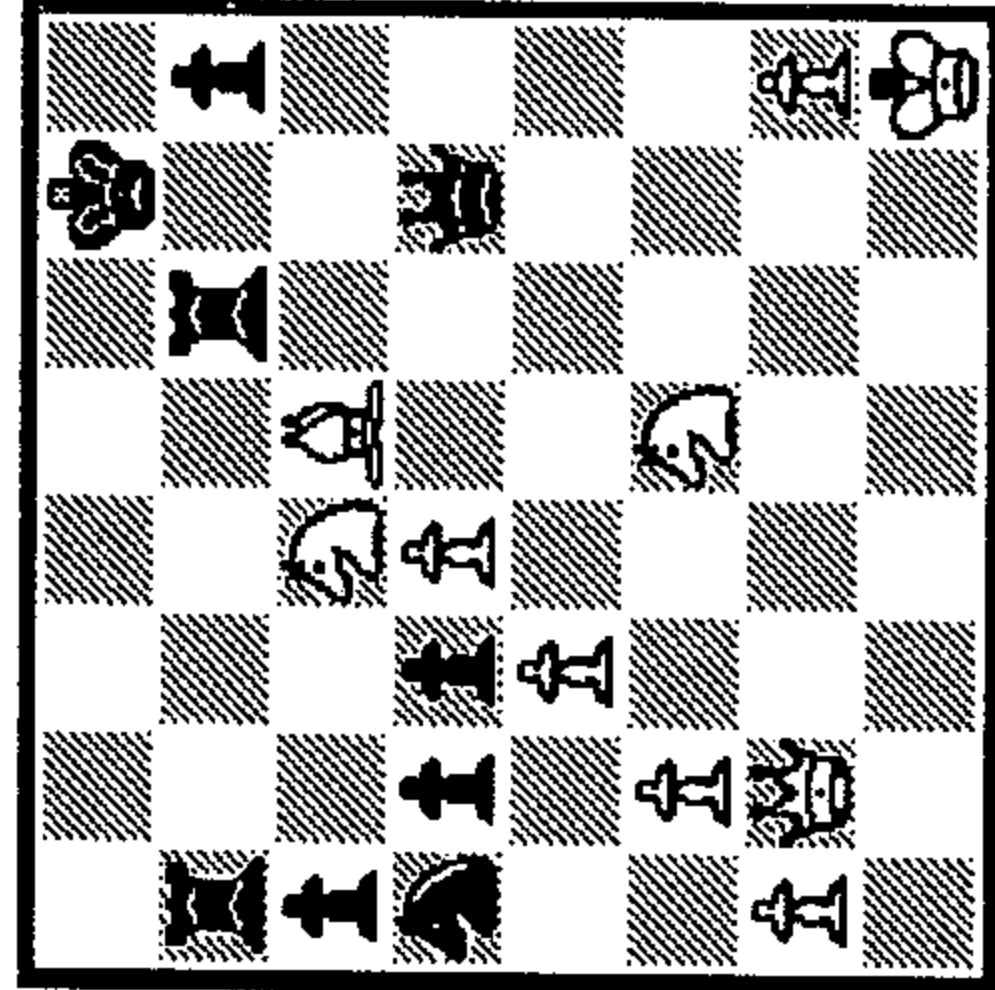
1...?



265

1.?

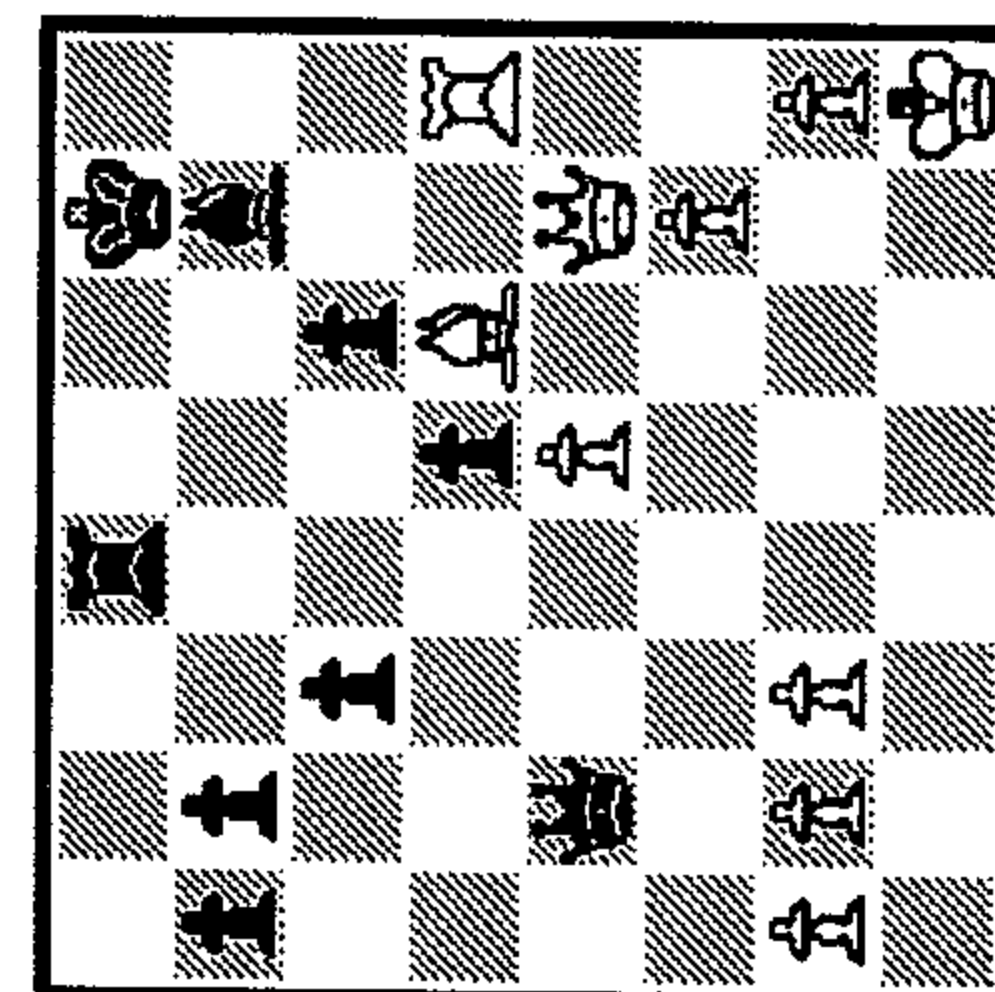
- 1_
- 2_
- 3_



266

1.?

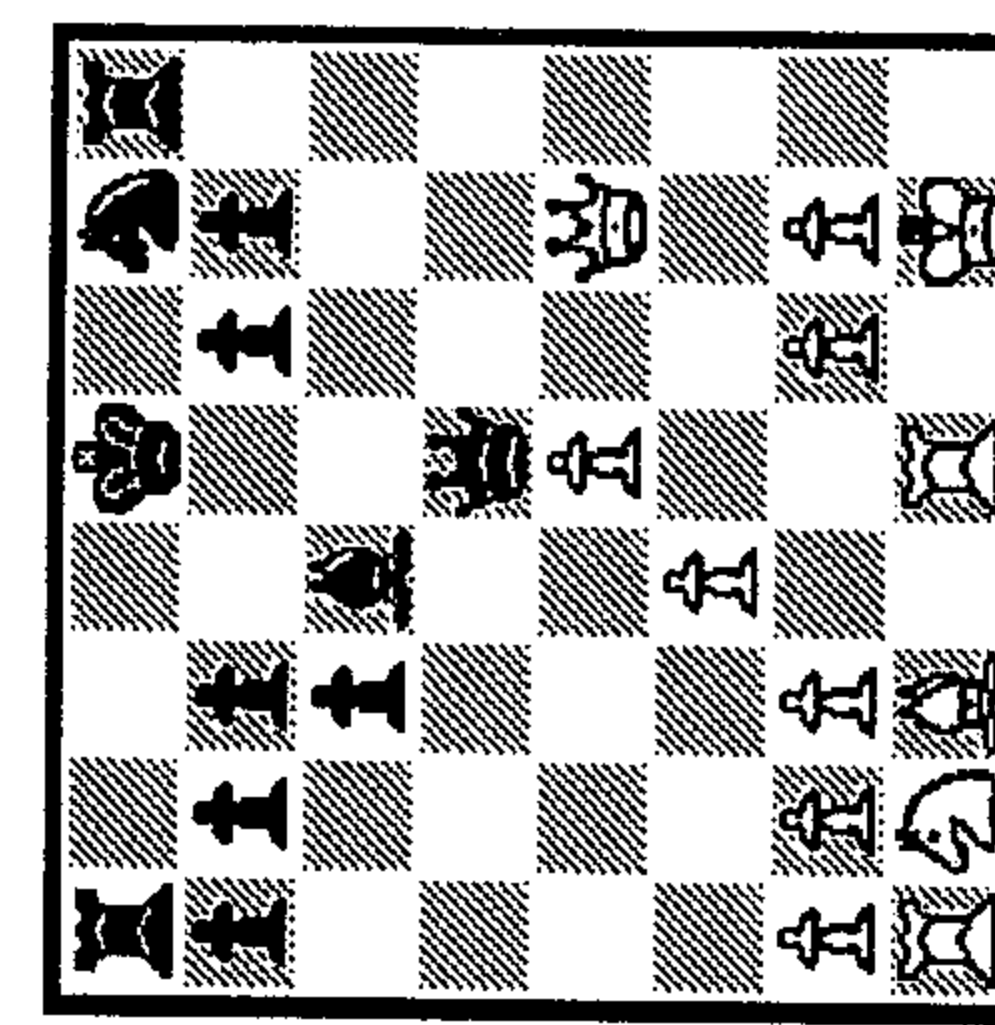
- 1_
- 2_
- 3_



271

1.?

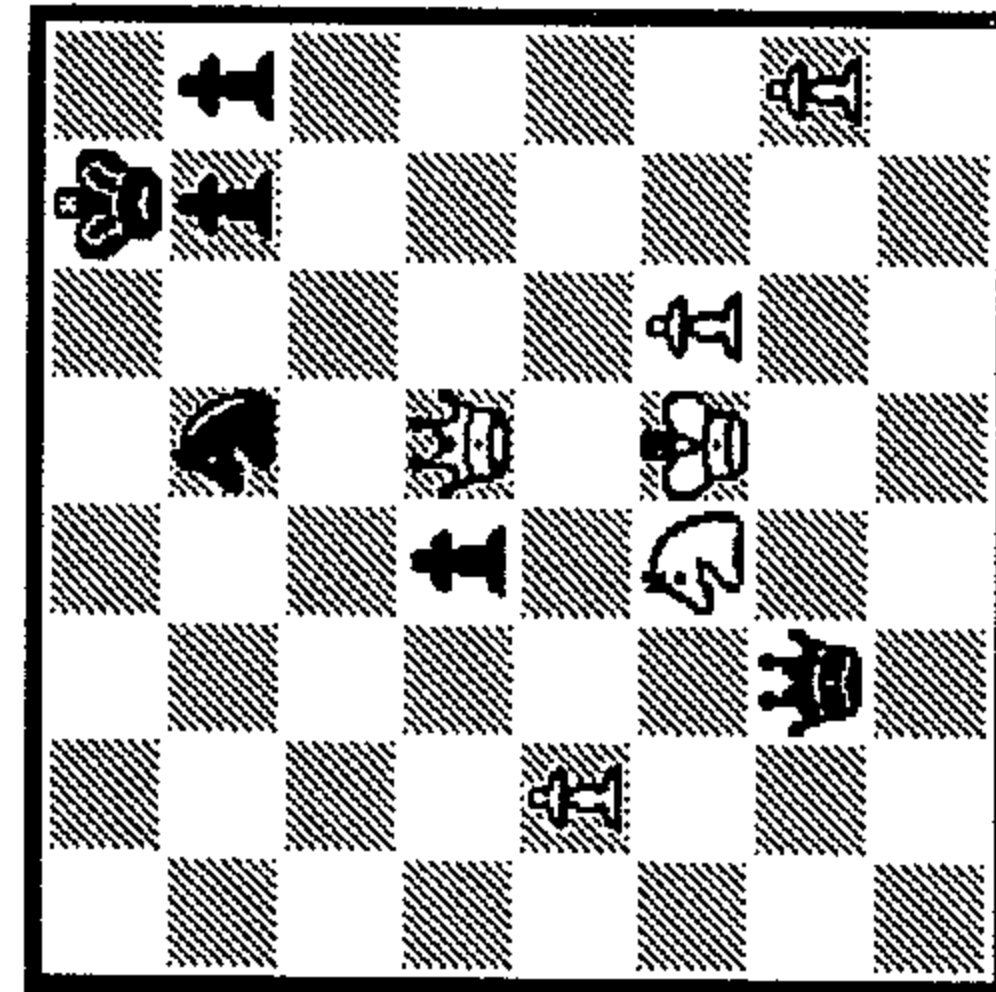
- 1_
- 2_
- 3_



272

1...?

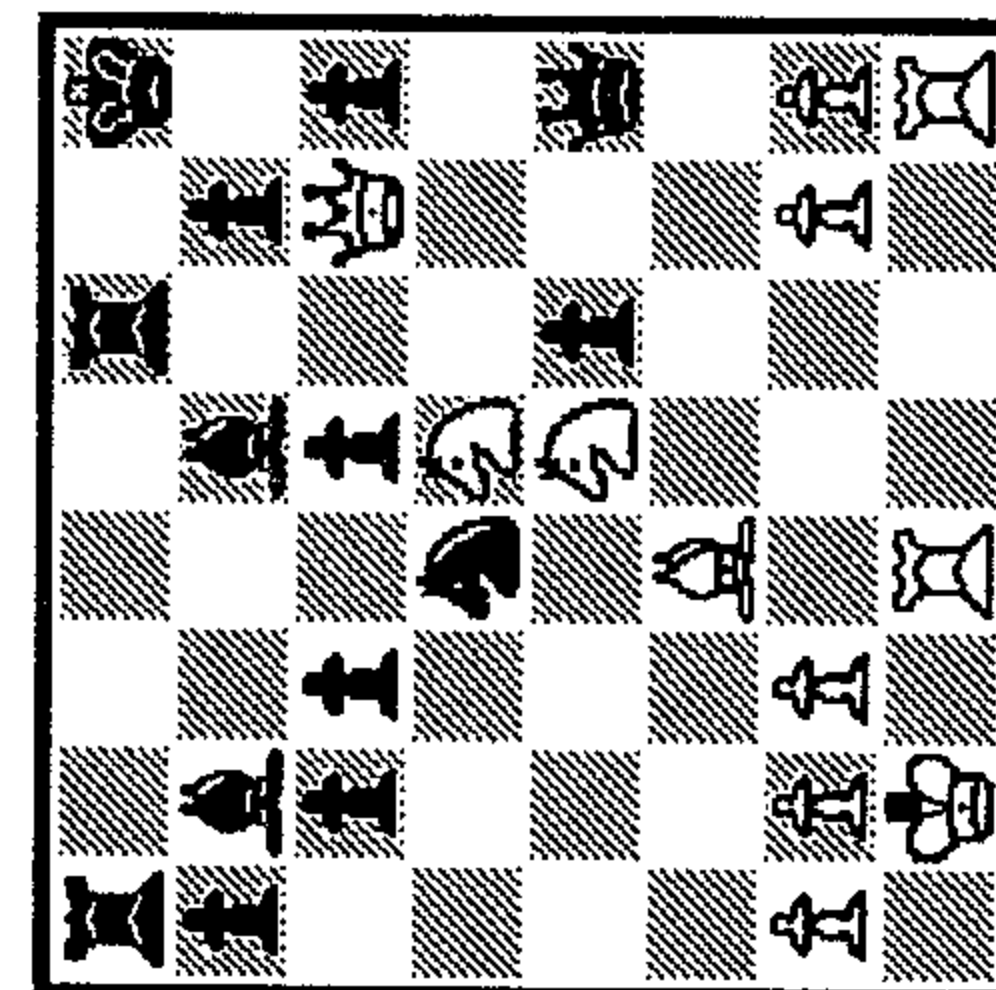
- 1_
- 2_
- 3_



267

1...?

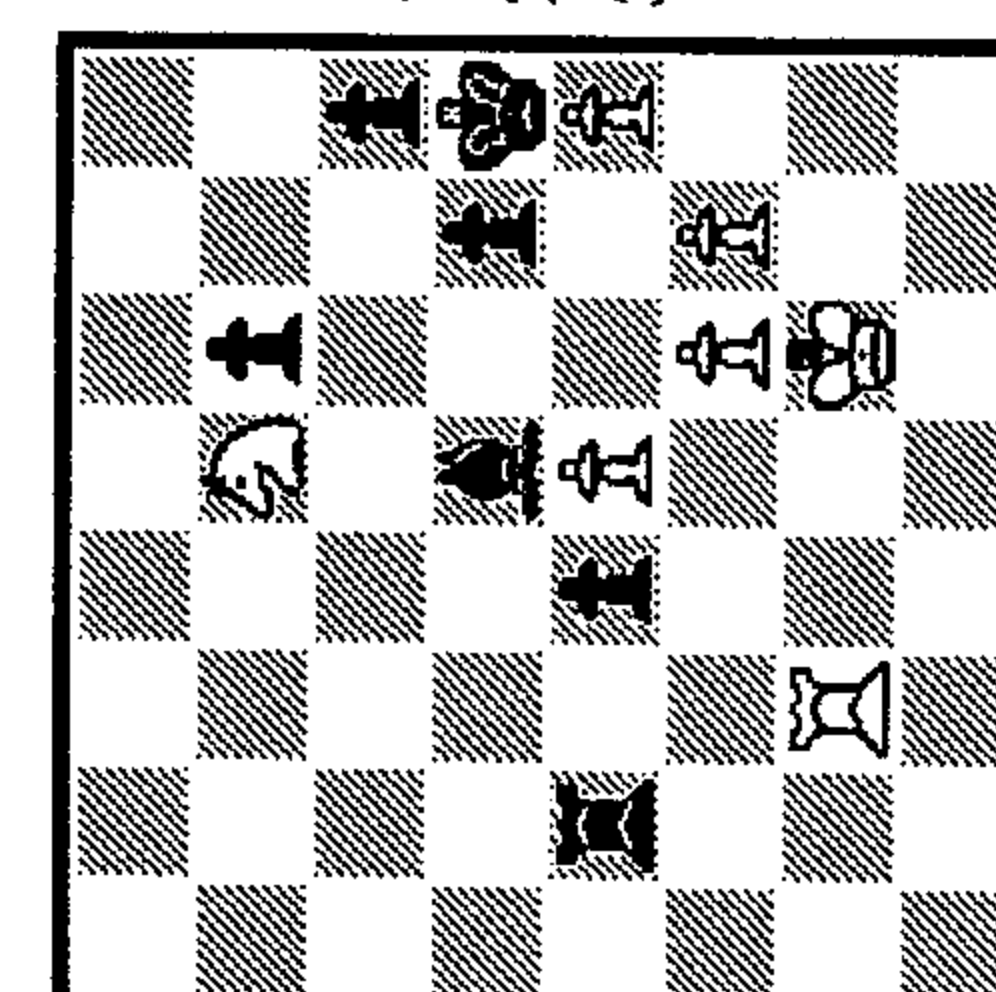
- 1_
- 2_
- 3_



268

1.?

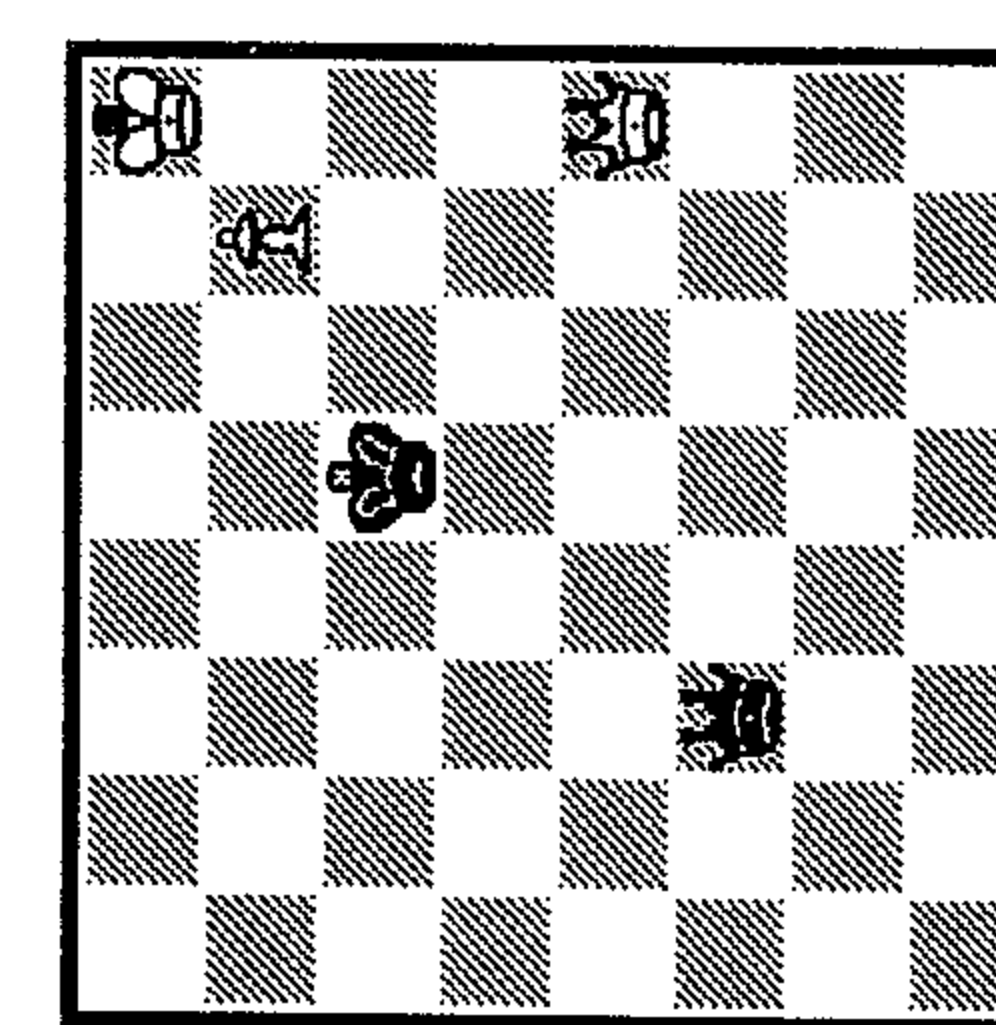
- 1_
- 2_
- 3_



273

1.?

- 1_
- 2_
- 3_



274

1.?

- 1_
- 2_
- 3_